

LOGGERS WORLD

VOLUME 50 NUMBER 1

To Advertise Call: (800) 462-8283

JANUARY 2014

Combo Loggers!



ESTACADA, OR

SEE PAGE 4

**ASSOCIATED CALIFORNIA LOGGERS
40TH ANNUAL MEETING**

PEPPERMILL RESORT • RENO, NEVADA

JANUARY 14-16, 2014



**ASSOCIATED OREGON LOGGERS
44TH ANNUAL MEETING**

VALLEY RIVER INN • EUGENE, OREGON

JANUARY 16-18, 2014



PRST STD
U.S. POSTAGE
PAID
PERMIT NO. 178
SALEM, OR

LOGGERS WORLD PUBLICATIONS
4206 JACKSON HWY.
CHEHALIS, WA 98532-8425

Finley's Rigging Shack "Classic"



(This column originally appeared in the April 1968 edition of *Loggers World*.)

We have changed Loggers World a little bit. For several issues we are intending to write about logging systems or parts of the logging job rather than report on Logging Outfits. This is the first issue that came out the new way. The issue after this will be on Falling and Bucking, the one after that will be on Logging Sports, Logging shows and the Logging Athletes that compete in these shows. The one after that will be on Log Hauling. Hope it meets with your favor!

February

I can't remember a February with more good weather in it than the one just past. However, when it did rain, there was no fooling around about it-she poured like the cow and the flat rock.

Age!

Lots of people think I'm older than I am and sometimes I think so too. When I get out in the brush and see some of these good fast men rambling around it brings home the fact that I'll never be able to do that again. It is a sobering thought when you know you have reached the age that you've lost some of the coordination and the muscles don't react like they should and the balance is shot and the legs won't mind. It's a thing that takes some getting used to, but eventually a man does. The good part is when you get sense enough to quit trying to do at 50 what you could do at 20. Wish I'd never started talking about these things. I'll be 50 next fall.

Apology

We get around to lots of outfits and take some pictures that never show up in Loggers World. The thing here is that some of the loggers

are disappointed because they don't get the publicity they deserve. The sad fact is that we are able to use only about one half of the B.S and pictures we get and take. Maybe we don't even use the best part.

Next Summer

The papers, radio and TV are putting out a lot of guesswork

about next summer's civil riots. I don't think they'll be as bad as last year because more people are prepared for them and I think they'll keep the lid on better.

One Radio Commentator said that when we went into Vietnam, we resolved to make that country over like the United States. He said that we succeeded in doing that because now Saigon looks just like Detroit did last summer.

Mistakes

I've got a calendar that says: "Machines are getting almost human. They now blame their mistakes on each other."

It also says: "Join the Government's Fiscal Fitness program. Get in shape to carry the tax load."

Office

I've got the messiest office in existence. I've got about a one quarter chance to find any given piece of paper at any time. Don't know how it happens because I try to be neat. Think part of the reason is that I'd much rather be out of the office than in it. Therefore, I'm only here when driven to it. It'll be neater after our next fire.

Story

Tip Grandorff (Logging Foreman at Simpson) was telling the rig up crew that it didn't pay to grease cork shoes. To prove this he was telling about a logger who got a new pair of cork shoes. This logger faithfully greased one shoe of the pair every day. The other shoe he didn't pay any attention to at all. The shoe he greased only lasted one hour and twenty-five minutes longer than the shoe he didn't grease.

Tip was saying this same logger sent to Alaska for some seal oil. When he got it he mixed up some shoe grease to his own secret formula. It worked so well that when he waded across the crick the water parted 18 inches ahead of the shoes.

You can make up your own mind but I don't believe it.

Success

Another thing that walks hand in hand with advancing age, bulging belly and shortness of breath is a curtailment of ambition. Along about that time of life many men have shrunk their dreams down to the size that fits the time they might have left and the ambition there to use.

I'd guess that everyone wants success as it is measured in money, cars and a large unmortgaged home. I'm no exception to that but there are some worthwhile things that come with slacking off the pursuit after riches. One thing is that you can be more independent because money is less important in your particular scheme of things. You can select the things to do that you like to do rather than those it pays the most to do.

All this horse manure leads up to me bragging that I am doing what I want to do and that in itself is worth quite a lot. Isn't it?

Alaska

Quite a few loggers have been stopping in at the office here in Chehalis to have their addresses changed to Alaska because they are going back up there to log this summer. Looks like they will be able to start early this year.

It is our hope that we can sneak away and spend some time in the Alaska logging belt this year. If so we can bring you more news, pictures and stories from there.

Advice

"Never put off until tomorrow what you can do today. For tomorrow it may be against the Doctor's Orders."

The cause of accidents involving bad weather conditions is the failure of the driver to adjust his driving to meet such conditions or to keep his vehicle in proper condition. And such accidents are preventable.



In This Issue...



COVER PAGE PICTURE: DAVID MARTIN pulls a turn into the Greenup Enterprises second yoder side with a Caterpillar 330B LL shovel/yoder conversion with an Acme 10 motorized carriage and Fortronics electronic choker bells holding the turn. To his left is Shane Griffin operating the Timbco 425 Hydro-Buncher processing logs with a LogMax 7000 dangle head processor. The Greenup yoders were on the same site, close enough that Griffin was processing from both sides. Greenup had three additional logging sides, and a road side working.

See "Combo Logger!" starting on Page 4.

2 THE FUTURE LOOKS CLEAR, SORT OF

STARTS ON PAGE 2 OF LOG TRUCKER - by Mike Crouse

2 RIGGING SHACK "CLASSIC" - by Finley Hays

4 COMBO LOGGERS!

GREENUP ENTERPRISES • ESTACADA, OREGON

21 ROUNDUP

18 MODERN DAY LUDDITES

- by William Perry Pendley

22 IRONMART

24 AS WE SEE IT...

25 SHOW & SELL

27 INDEX/COMING EVENTS



LOGGERS WORLD

Published by LOGGERS WORLD PUBLICATIONS

Founded in 1964 by Finley Hays

Phone (360) 262-3376



Member and Supporter of the
American Loggers Council Since 1994

EDITOR/PUBLISHER.....Michael P. Crouse

EDITOR EMERITUS.....Finley Hays

ADVERTISING MANAGER.....Kevin Core

OFFICE.....Holly Larson

POSTMASTER: Send address
changes to:

LOGGERS WORLD PUBLICATIONS,
4206 Jackson Highway, Chehalis, WA 98532-8425

E-Mail: logworld@aol.com

SUBSCRIPTION RATE (In U.S.A.): \$12.00 per year;
Two years for \$20.00

LOGGERS WORLD PUBLICATIONS cannot and does not assume responsibility for the contents of any advertising in Loggers World. The representations made by advertising is the responsibility of the advertiser and not Loggers World. Loggers World does not knowingly accept advertising that is false or misleading. The limit of Loggers World liability in case of a mistake made in advertising copy by Loggers World will be the charge of the actual space containing the error or less for that particular advertisement

"What we find with these new Cat bunchers is that they're very reliable. They run very steady. We spend our time cutting trees and not working on the machines."

Proud Supporter of



Robert D'Agostini Jr.
J&R Logging, Inc.

With minimal downtime and the best-in-class blend of lift, swing and travel power, Robert says his Cat® 522B Track Feller Buncher is very productive. The tracks and all of the undercarriage rolling components have been upgraded to 330 excavator type to extend track life and cut repair costs. Plus the 522B has the only three-cylinder leveling system with simultaneous forward and side-to-side tilting throughout the full range of motion. This design significantly reduces stress on the lower structure and provides the most comfort for the operator. The 522B is built for a long life of steady performance for J&R Logging.

Logging isn't just cutting 'em down. Look to your Cat dealer for financing and all the machines, attachments and parts you need for road building to reforestation. Total support from one source.

www.cat.com/forestry

BUILT FOR IT.™



Robert D'Agostini Jr., President, and Saul Jimenez, Partner and Operations Manager



www.cashmanequipment.com
Nevada and Eastern Sierra
800-937-2326



www.holtca.com
Central Northern California
800-452-5888



www.ncmachinery.com
Western and Central Washington
800-562-4735 and
Alaska 800-478-7000



www.petersoncat.com
Northern California, Western Oregon
and Southwestern Washington
800-452-7676



westernstatescat.com
Idaho, Western Montana, Eastern
Washington, Eastern Oregon and
Northwest Wyoming
800-852-2287

© 2013 Caterpillar. All Rights Reserved. CAT, CATERPILLAR, BUILT FOR IT, their respective logos, "Caterpillar Yellow," the "Power Edge" trade dress as well as corporate and product identity used herein, are trademarks of Caterpillar and may not be used without permission. www.cat.com www.caterpillar.com

Combo Loggers!



by Mike Crouse

Originally from Montana, Clarence Greenup moved to Eastern Oregon sometime in the late 30s settling in Heppner, where he later met and married his bride, and where many in the family still reside. Around '49 Clarence Greenup moved to the Portland area working and raising his family including Mark Greenup who was born in 1954.

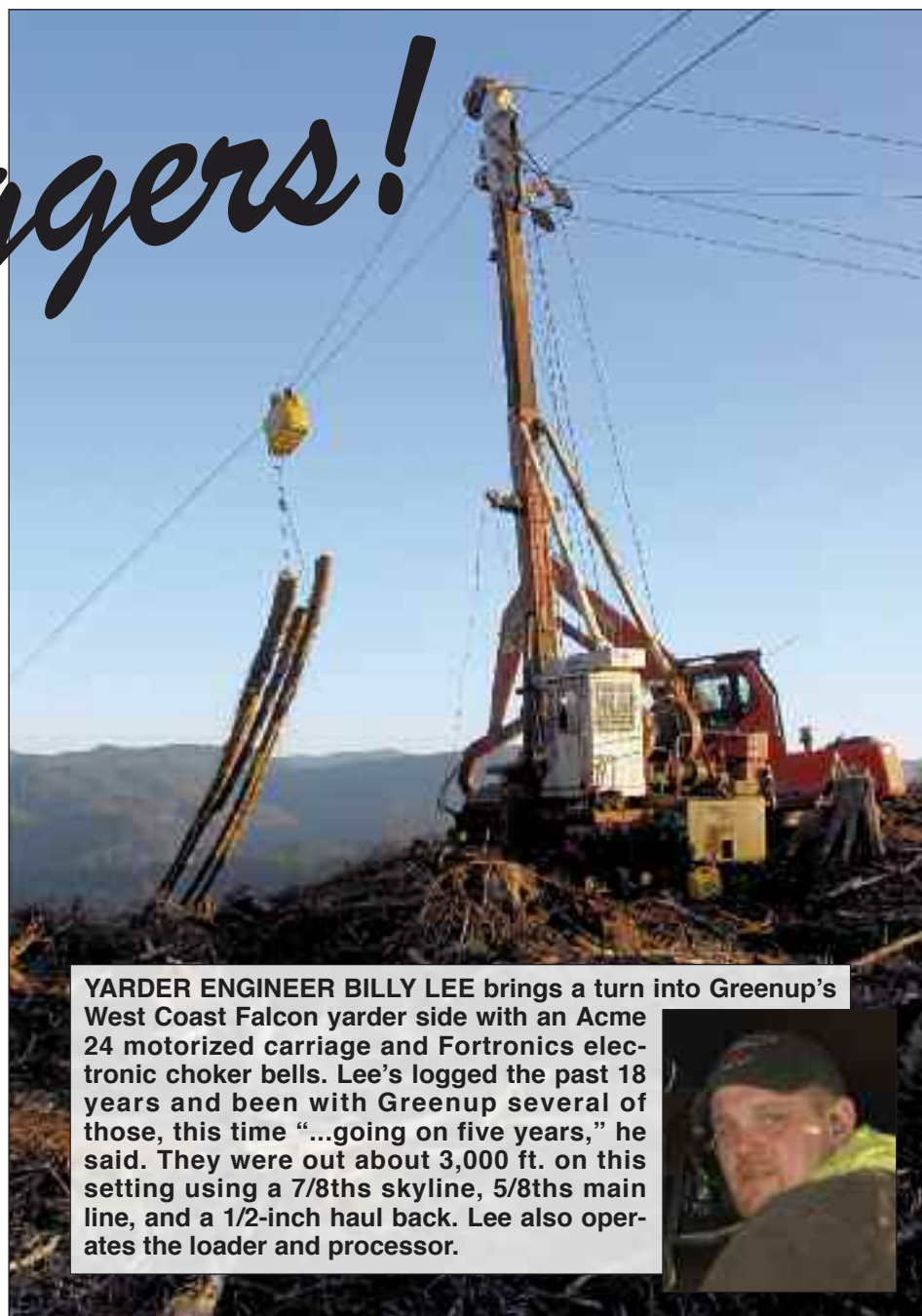
Upon graduation from David Douglas High School in Portland, Mark Greenup found a job, which brought him back to logging in Heppner. "Initially he'd run Cat for Gary Patterson out of Heppner, Oregon," explained his son, Jon Greenup. "A lot of our family is still there," and thus he began his logging career in addition to spending his time at making more than "just a living." He met and married Terry (Kahl) around '76 while still in Heppner, and as the family grew so did his incentive to earn more, "...constantly looking for other ways to help support the growing brood." With Eastern Oregon logging becoming more of a challenge, and considering all the options available, Greenup found opportunity on the west side, which uprooted the young family moving to Estacada, Oregon..

"Around '81 or '82 when we moved here," explained Jon Greenup, "he (his dad Mark) bought the little Springwater Store here." His enterprising nature was evi-

dent, "...he was a timber faller, worked on a ranch, and was doing a bit of everything to keep things afloat. He'd not intended to be a logging contractor, however that was a business that could generate an income along with others in their new home. "He cut timber during the day, work at the store at night, (he and mom ran that store" and he'd also get hay from Eastern Oregon, and deliver it over here.

Greenup was a consummate entrepreneur starting several businesses along the way in addition to the Springwater store, which eventually included a Christmas tree farm, a trucking company, and nursery to name a few. "He was a go getter," son Jon Greenup explained with a smile. "If he had an extra dollar he spent it, worked seven days a week to take care of our family." Then continued noting it was, "...something he passed on to all of us."

(Continued on Page 15)
See "Greenup"



YARDER ENGINEER BILLY LEE brings a turn into Greenup's West Coast Falcon yarder side with an Acme 24 motorized carriage and Fortronics electronic choker bells. Lee's logged the past 18 years and been with Greenup several of those, this time "...going on five years," he said. They were out about 3,000 ft. on this setting using a 7/8ths skyline, 5/8ths main line, and a 1/2-inch haul back. Lee also operates the loader and processor.



Introducing the **NEW** Hyundai 3220-9CTL



- Powered by Cummins QSC 278-HP Tier 3 Diesel with Hydraulic Proportional Fan
- Kawasaki Hydraulic Pumps (2 x 88.7 GPM Flow)
- High/Wide Undercarriage (28" ground clearance / 11'9" wide)
- Heavy Duty Rails
- 28" 2-Bar Grasper Pads
- Bolt-On Rack Guards
- Roomy Operator's Cab with Excellent Visibility, includes the following:
 - Color Display Monitor
 - Three (3) Power Modes
 - Heated Suspension Seat
 - Climate Control Air Conditioner / Heater
 - AM/FM/CD
 - CB Radio
- Waycon Logger Guarding Package
 - 48" Tilting Cab Riser
 - Heavy Duty Cab Guard
 - Heavy Duty Side Doors
 - Under Belly Guarding
 - Cat Walks
 - Log Deflector
 - Room Lighting Package
 - Computer Cover
- 41" Logger Room with Live Hoel and Arm Cylinder Guard
- Approx. machine weight 96,000#

HYUNDAI
CONSTRUCTION EQUIPMENT AMERICA, INC.

Cascade TRADER inc.
EQUIPMENT SALES - LOGGING & CONSTRUCTION

1380 NW State Ave Chehalis, WA 98532
(360) 748-1182

PACIFIC FIBRE PRODUCTS
WANTED
Alder, Maple, Douglas Fir, Cedar
Hemlock, Cottonwood
PULP LOGS
Land & Timber or Timber Only
Ray Lemmons • 360-430-7040
Paul Hadaller • 360-431-9661
P.O. Box 278, 20 Fibre Way, Longview, WA.
Office: 360-577-7112



ALAN KING clearing the chute on Greenup's West Coast yarder side with their Daewoo Solar 220LL loader with Daewoo boom and Pierce grapple. He's a veteran of 41 seasons logging, and joined this crew two years ago, typically operating their LogMax 7000 dangle head processor. He lives in Rainier, Oregon but stays in a trailer during the week on this job.



Authorized Dealer

Sales, Parts & Service
Your #1 Established Forestry Equipment Dealer

**Ask About Our Special
Financing: Up to 60 months**

All offers subject to credit approval



**Cascade Trader has a Complete Line of new Doosan Log Loaders,
Excavators & Wheel Loaders for your Logging & Construction Needs!**

LOG LOADERS

NEW DOOSAN Excav. & Loaders.....P.O.R.
DX300LL Log Loader, clean.....\$159,500
DOOSAN S 800 LL Log Loaders..\$80-90,000
CAT 320 C LL, '04,\$109,500
CAT 322 L Log Loader.....P.O.R.
CAT 330 LL Log Loader, eng. bad, as is..\$25,000
CAT 330C Log Loader, '05, for. cab.....P.O.R.
JD 690E Log Ldr, H/W, Excellent.....P.O.R.
KOBELCO SK 250 Log Loader, for. cab..\$69,500
KOBELCO 270 Log Loader.....P.O.R.
KOBELCO SK350 Log Loader.....\$149,500
LB 290LX Logger.....P.O.R.
LB 4300Q Log Loader, rotec bad, good U/C P.O.R.
PRENTICE 410, truck mounted.....\$12,500
PRENTICE 600B, on Pierce SP carrier..\$19,500
T-BIRD 1242 LL Log Loader, clean.....\$60,000

FELLER BUNCHERS, PROCESSORS & FORWARDERS

Complete Parts & Service for your
Waratah Needs

DOOSAN S300LL, W/Keto, nice unit..\$119,500
CAT 325C FM Logger/HTH622B.....\$125,000
DANZCO PT20 Pull-Thru Delimber...\$10,500
HITACHI 300EX, W/Keto 800 TS.....\$49,500
JD 790E/KETO 525TS, Super Clean..\$65,000
JD 1270D '05 Harvester 762C.....\$165,000
KOBELCO SK200/Keto 525TS.....P.O.R.
KOBELCO SK250/Denhco DM4400 Stroker..\$57,500
KOBELCO 290 for. cab/Waratah 624, '07..\$165,000
KOMATSU PC 200 Log Ldr/HTH 622B..\$138,000
KOMATSU PC200 W/Waratah 622B..\$139,500
MORBARK 1300 NCL Tub Grinder.....P.O.R.
MORBARK 30 RXL Chiparvester.....P.O.R.

MORBARK Model 27 Chiparvester.....P.O.R.
TIMBCO T-425C/Quadco 22".....\$45,000
TIMBCO T425B/Koehring Hotsaw.....\$45,000
T-BIRD 1240LL/Keto 10,000, clean.....\$89,500
TIMBERJACK 933C Clambunk Forwarder..\$44,500
TIMBERJACK 2618 FB, disc saw.....\$45,000
VALMET 500T/LogMax 4000.....\$49,500
VALMET 900 Harvester, 965 head.....\$67,500

TOWERS & YARDERS

KOLLER 300, trailer mount.....\$16,500
MADILL 071.....P.O.R.
SIDEWINDER Swing Yarder, as is.....\$42,000
SKAGIT 737, self prop., T-100, high lead \$75,000
SKAGIT BU-80, self prop., T-90.....P.O.R.
URUS Thinning Yarder, truck mounted \$30,000

TRUCKS & TRAILERS

AM-LAFRANCE 90' Bkt Trk, '90, tree svc \$10,500
GENERAL 60 Ton, 9' ctr rail, low bed, 2nd deck,
w/axle boost, 3 axle Jeep.....\$59,500
HAYRACK Trailer, 3 axle, 42', el. scales..\$14,500
KW T800, '07, lowboy tractor, sleeper.....P.O.R.
KW T800 Logger, '95 Cummins.....\$34,900
KW T900, '85, mule train, w/3rd axle.....P.O.R.
KW w/Hyster folding lowboy PKG.....\$22,500
KW '73 Dump Truck.....\$8,950
KW '76 Log Truck.....\$12,000
PETE '97 Log Tr, 5th wh, QC.....\$36,500
TRAILKING TK 110 HDG, lowboy, 2013P.O.R.

EXCAVATORS, DOZERS, LOADERS, SKIDDERS, GRADERS, ETC.

DOOSAN DL250 Whl Ldr, GP, low hours..\$85,000
DOOSAN DL300 Wheel Loader.....\$95,000
DOOSAN DL500 Whl Ldr, log forks..\$210,000
DOOSAN 175 Exca., w/hyd thumb.....\$45,000

DOOSAN 35Z Mini Excav., 400 hrs.....\$25,000
CAT 518 Grapple Skidder.....\$14,500
CAT 527 Track Skidder, swing, EROPS..\$85,000
CAT 14E Grader.....\$15,000
CAT D5H TSK Track Skidder, fxd grpl, cab P.O.R.
CAT D4H Grapple Skidder, as is.....\$15,000
CAT D4H Track Skidder, OROPS, fxd grpl..\$42,500
Clearing Blade w/push beams, D6C.....\$3,500
DIAMOND Z 1260 Tub Grinder, exc. cond..\$110,000
FIAT ALLIS 8, winch/arch, SU.....\$16,000
FIAT ALLIS FD9,\$22,500
(2) FMC 220CA Track Skidders.....\$39,500
GARRETT 25A Skidder.....\$8,500
HITACHI 200EX.....\$40,000
INT'L TD15B.....\$8,500
JD 50D, thumb, bkts, mulcher, low hrs..\$49,500
JD 850B Dozer, excl, "U".....\$19,500
KOBELCO 270 Excav.....P.O.R.
KOEHRING/BANTAM 366 Exca.....\$22,500
KOMATSU CK30, track skid steer, low hrs..\$28,500
KOMATSU PC 200 Exca., thumb.....\$22,500
KOMATSU 200 Exca., bucket.....\$27,500
LB 4300 CII Rd. Bldr, bkt & thumb.....\$29,500
SAMSUNG 210 LC-2, '92.....\$36,950
TD20G Crawler/Tractor, brush rake, winch \$38,000
TD15E SU, fixed Esco grapple, clean..\$24,950
TEREX 8220 Dozer, bad engine.....\$9,500
TIMBERJACK 660, '98 skidder.....\$39,500
TIMBERJACK 230 Grapple Skidder.....\$9,750
TIMBERJACK 404 Skidder, 18.4, clean..\$7,500
VOLVO EC140BLC Exca., thumb, low hrs \$56,000

KETO • WARATAH • EAGLE CARRIAGE

Rich Lennox (360) 508-0192 Jim Wark (360) 623-5219
John Welch (360) 520-2082 Cooper Brunoff (360) 880-7534
Shannon Pesicka (360) 507-0542 John Griffin (425) 210-9702
Mike Duch (360) 880-6955

Bill Pantier • Doosan Parts: (360) 508-6294 Cell
Traci Brunoff • Sales Coordinator: (360) 880-7531

www.cascadetrader.net

(360) 748-1182

fax (360) 748-1198 • Located at Exit 79 off I-5
1380 NW State Ave., Chehalis, WA 98532



RICK JONES was chasing on Greenup's tower side, bumping knots and making logs with a Stihl MS460 chain saw. Typically Jones, a second generation logger and veteran of 40 years in the business, runs the Daewoo Solar 220LL loader with Daewoo boom and Pierce grapple.

Oliver-Hammer Clothes Shop

**Clothing the
Working Man for
93 Years**

Wesco Caulk Boots, Redwing,
Carolina, Carhartt, North Star
Gloves, Hickory Shirts,
Logger "Riggin" Jeans and a
Whole Lot More

(360) 855-0395

821 Metcalf,
Sedro Woolley, WA 98284



TOWER SIDE brush crew includes (top) veteran of 18 seasons, the past three as hook tender, Justin Childress. They were using an intermediate support tree with an Acme jack for more lift on this site. Newest brush man is Cole Stockner (left), just out of Estacade High School and "...I just thought it was interesting and wanted to get into it." Joe Sadoff has been in the brush the past nine years as a rigging slinger, and is a fourth generation logger, and joined Greenup four months prior.



LARRY MERRITT sorting and decking with Greenup's Caterpillar 324D FM shovel with Cat boom and grapple. He started logging out of high school in '77 and has run machinery the past 20 years. "I like doing just what I'm doing, loading logs," he said. "I'd run processor for 10 years and that was enough." He joined the crew some 18 months ago.



CURT SANDQUIST is a fourth generation logger and timber faller who works for Maurer Cutting, who does the contract cutting for Greenup. He's logged since high school and has cut the past three years, "...off and on," and was using a Stihl MS660 with Oregon bar and chain.



TODD ROGERS drive's Greenup Logging's No. 3 log truck: a '97 Western Star with a 525 Cummins and dragging a Pierce trailer with Whit-Log bunks. He's a 3rd generation logger with 30 years under his belt, "...trucking the entire time."



CHAD WHEELER is Greenup's forester and joined the team almost five years ago. He's an OSU graduate who Jon Greenup describes as, "...the right hand of the operation." He takes care of the government paperwork, in addition to his other duties.



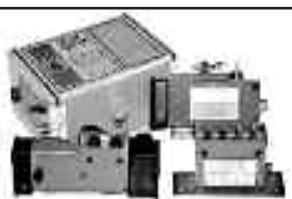
KEITH MORRIS operates Greenup's new Tigercast 830 leveling feller/buncher with Quadco intermittent hot saw. "The 830 rules the roost," Morris said. "They're very stable and get around very well," then added, "I prefer to have a hold of the tree to cut it off, and the (Quadco) intermittent allows that too."



ROTHENBUHLER ENGINEERING

HOME OF THE *Talkie Tooter*

MARK III WHISTLE CONTROL
now in the 75 MHz band, get away from
congested frequencies with a proven design



CARRIAGE CONTROLS
rugged radios that can control any
manufacturer's carriage from the ground or
the yarder

**Rugged, Durable,
Industrial Radio
Equipment since 1946!**

P.O. Box 708, 524 Rhodes Rd
Sedro-Woolley, WA 98284-0708
Telephone 360-856-0836
www.talkietooter.com



11 Spokane Street - Suite 306

Wenatchee, WA 98801

Toll Free 888.223.2600

www.fullcirclellc.us

DOUG POWELL

Who Says Money Doesn't Grow on Trees?

We Finance Loaders, Trucks, Skidders, Trailers, etc.

- Simple application only options
- Flexible financing
- Choose a loan or a lease
- New or used
- Buy from a dealer or private party

Isn't it time you made an investment in your machinery?

Call Doug Today!

888-223-2600 • dee@fullcirclellc.us
After hours cell: 509-393-5111



CC HEAVY EQUIPMENT INC.



2004 Volvo A30D Articulated Truck with new Serco 230B, heavy lift self loader, Volvo has approx. 7,100 hours since new. In Excellent operating condition, custom built Alpine log bunks & log trailer (not pictured) **\$249,000**



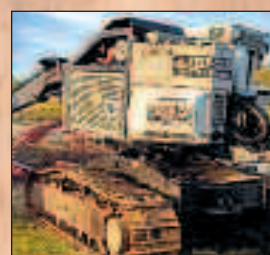
2010 JD 160D LC, Waratah 616 all updates, topping saw, 2,800 hrs, auxiliary cooler, Like New **\$265,000**



2008 Madill 2850C Log Loader, Recent engine, excellent condition, low hours. **\$237,500**



2007 Kobelco 160 LC, Jewel guarding package, 0 tail swing, Log Max 6000, 9,000 hrs, NEW U/C, extra parts and uptime kit, all records available **\$129,000**



1999 Timbco 445D, NEW Eng, NEW U/C, has 2002 Waratah 620 processor, READY TO GO..... **\$125,000**



2008 Kobelco 210 Loader, 8,100 hrs, Recent UC, Pierce Boom & Grapple, New Cummins eng., Forestry Cab & Winch.....**\$159,000**

**Did You Know
There are Over
100 Items on Our Website?
Check It Out
It's Real User Friendly!**

www.ccheavyequipment.com



1995 CAT D5H TSK Series II, 7,800 hrs, NEW UC, Good oil samples, 100" ESCO, fixed boom grapple, winch.. **\$75,000**



2003 Komatsu PC220 LC-6LE, 19,000 hrs, 5.9 Cummins, U/C 75%, Tight Boom, Double Bar Grousers, 2003 Waratah 622B 12,000 hrs, Well Maintained Near Perfect Head.....**P.O.R.**



2003 Kobelco SK250, 19,000 hrs, Mitsubishi Eng, Jewel Log package, 1yr on New Rotec, 2yrs on pump, 50%+ UC, 52" Pierce grapple **\$59,000**



2006 Valmet EX 10, Leveller, Harvester, 6,712 hours, 32' Boom, 370.2 Head, 360° Swivel, Excellent UC, Fire Suppression.....**\$140,000**



2001 Madill 1236 DL, Pierce 3345 Stroker, Excellent Condition.... **\$69,000**



2000 Komatsu 270, 19,000 hrs, 4400 Denharco Monoboom, New winch drive **\$75,000**

Picture Coming

1997 CAT 527 OROPS, approx 8,000 hrs, fixed boom grapple with winch, recent trans, eng and steering clutches, records available, single rail UC 50%+ **\$149,000**

Christy Yarder ready to go **\$59,000**



1991 KOLLER 501 on a 1989 Freightliner Truck, comes with all the rigging NEW PRICE **\$60,500**



2003 CAT 322C, 14,300 hrs, New Engine ... **\$139,000**



Timbco 435 Leveller, Waratah HTH 230 Processor **\$55,000**



1996 Valmet 892 Forwarder, New JD Engine, Trans, Torque, Hyd Pump are Rebuilt, really good set of ECO TRACKS & good tires, new paint. ... **\$55,000**



1993 CAT D5H EROPS, Tillotson Arch, CAT winch, quad tracks UC is 70%, 3,600 hrs..... **\$69,000**

FINANCING AVAILABLE • TRADES POSSIBLE CONSIGNMENTS WANTED

1989 Volvo A25, for parts or to rebuild.....	\$18,000
1993 Hitachi EX120, Clamshell.....	\$32,000
2006 4710B Peterson Track Grinder.....	\$275,000
Kobelco 400 Mark IV RB, Clamshell	\$45,000
1990 JD 493 Timbco, Barsaw	\$29,000
2000 Pierce PTH20, COMPLETE.....	\$35,000
1998 CAT 325 LL, 17,000 hrs, Waratah 622B, 9,600 hrs	\$105,000
Shop Built Brush Rake, 8'4" wide.....	\$2,000

**MORE EQUIPMENT ON OUR WEBSITE:
www.ccheavyequipment.com**

CC HEAVY EQUIPMENT INC.
Carl Cornthwaite • 503-507-7230
carl@ccheavyequipment.com • Dallas/Salem, OR



MARK GREENUP (from a '98 photo), Jon's father, started logging in '75, and established Greenup Enterprises in 1988, as a single side ground skidding based show. "He was an entrepreneur," said his son, "and a go-getter." He also was involved in trucking, Christmas trees, a nursery, and convenience store to name a few.



Southwest Forest Products is searching for a FORESTER for Harvesting Division

The successful candidate will be responsible for:

- Supervision of 15 full time employees.
- Field planning of harvesting treatment areas.
- Liaison with Forest Service representatives.
- Facilitate the maintenance & repair of 10 harvesting machine units.
- Ensuring adherence to company policies and timber sale contract regulations.
- Maintain company safety and log quality standards.
- Producing 40 loads of logs per shift.

DIESEL MECHANIC

Exceptional person is for our Northern, AZ logging operation. Must have 10 years' experience:

- Heavy Equip. Diesel Engines,
- Hydraulic systems & Electrical Systems
- Welding Experience a must!

Fax Resume: 602-278-0398
email: luiss@southwestforest-products.com
Or call: 602-730-8187



MITCH BIGSBY hauls a turn to the Greenup landing with a Caterpillar D5H with fixed arch boom he operates, and joined the crew three years ago this coming March. He started logging while a senior in high school, "...going to school every other day and logging on those off days, so I graduated and had a job the day after. He lives in Boxton, Oregon.



RICK SOULE operates Greenup's Caterpillar 525 wheel skidder with fixed grapple on their private logging side, and joined the crew three years ago. "I operate other machines too, but mostly just this skidder," he explained. He lives in Estacada.

Free Ball Cap

While supply lasts, get a 100' of OREGON® 3/8" square-ground chisel saw chain for only:

\$259



Plus, mention this ad and we'll throw in a FREE collector's ball cap with your roll of chain.

Get yours today!

MADSEN'S
SHOP & SUPPLY INC.
Centralia, Washington

☎ 360-736-1336
Information Calls
☎ 800-822-2808
Direct Order Line
www.madsens1.com

WE BUY CLARK PLANETARY AXLES



Call For Details

- Clark Planetaries & Schuler Axle Parts in Stock
- All Parts Magna-Fluxed Prior to Assembly
- Over 40 Fullers in Stock and Ready to Go
- Yarder, Shovel, and Unique Off-Road Call Us!



HEAVY DUTY TRANSAXLE

www.hdtransaxle.com

888-383-3301

360-793-3661
360-793-3881 Fax
35409 SR2, Startup, WA

It's available with
360° rotation
EASILY HANDLES 35" WOOD
90% STEM COVERAGE
 DURING DELIMBING
3/4" TOPSAW OPTION
 High performance
 drive power and speed
LARGE
 3/4" auto tension
 main saw 43" MAIN SAW
 BAR AVAILABLE
 Two standard
 bottom
 delimb arms

All the best ideas in one new head.

Learn more about the new 625C harvester head at the Oregon Logging Conference in February.

Ed McDaid
 ed.mcdaid@us.waratah.net
 +1 (360) 636-2950

Doug Landers
 doug.landern@us.waratah.net
 +1 (770) 692-0380

www.waratah.net



TEAMWORK... THE HAND-OFF



SCHAD BANYARD (above) processing logs on Greenup's Link-Belt 330LX with Waratah 624 dangle head processor, which they've had the past three years. He's logged with Greenup the past 16 years and, "...runs pretty much everything."



BOB LUSTER is a independent contract hauler the past 25 years, and drives this '74 Kenworth, pulling a General trailer, he's owned the past seven years, and lives in Castle Rock, WA. The truck boss for Greenup in Washington is Todd McElhane, out of St. Helens.



JERRY BOYCE explained, "I started 30 years ago (because his neighbor said) there was big money in trucking, so I went down and bought myself a truck at auction for \$13,500." Today's truck is a 2001 Kenworth 900L, with a Cat C15, and big Eaton rear ends, with Assembled trailer and Hassel bunks. He lives in La Center.



JOHN HAMMOND (above), operating Greenup's Caterpillar 235D FM shovel with Cat grapple and boom, picks up a processed log from Schad Banyard. Hammond is a second generation logger from McMinville, and been in machinery 20 of his 24 years logging. He had a half dozen sorts going, both domestic and China sort.



ACME
Manufacturing Inc.

90099 Prairie Road
Eugene, OR 97402
Phone 541-741-2200
Fax: 541-741-2212
After Hours: 541-554-9414
(Wayne)
www.acmecarriages.com



FORTRONICSTM LTD
FORESTRY ELECTRONIC CHOKER SYSTEMS





ERIC MAURER on Greenup's brand new Caterpillar 568LL shovel logger with Cat boom and grapple, has been operating equipment nearly all of his 20 year career logging, the past 15 on shovels. "This is as good as it gets," he said about the 568. "I don't think there's anything better. Lots of power!" they have 1,400 hours on it and he said, "We haven't had any troubles." He's been with Greenup the past six years, "...off and on."

SINGLE GROUSERS were specified by Greenup on the Cat 568. "We're logging steeper and steeper ground," Greenup said, "and we figured the less we have to push yourself and stick on the ground (the better). Your tracks

won't fill up with mud as fast and it doesn't tear the ground up that much. The edges are cut off on the sides at angles, and when you turn it doesn't cut & tear the ground up as much."



2011 CAT 545C GRAPPLE SKIDDER, dual function boom, full rotation, winch, very good 35.5 tires, 3,400 hours, very good condition.....\$159,500



1997 CAT 527, cab, Esco swing boom, Prolenc snubber, good UC, meter shows 9,000+ hours, runs & shifts well, clean.....CALL



2008 CAT 525C GRAPPLE SKIDDER, single-function boom, grapple, winch, enclosed cab, good 30.5x32 tires, 9273 hrs, just arrived...\$70,000

2006 CAT 525C GRAPPLE SKIDDER, dual-function boom, grapple, no winch, good 30.5x32 tires, 8,300 hours, just arrived.....\$70,000

HULTDINS SE360LP GRAPPLE, 73" full rotation, removed from Terex TXC175LC-1.....\$7,500

JEWELL HEEL RACK, stamped for Hitachi 200/290??? Very good condition, approx 53" W x 8.7" L.....\$3,000

MEDFORD LOG FORKS, for Komatsu WA450, good condition.....\$3,000
LOG FORKS for 966D/E/F.....\$4,500



527

Certified Rebuild Power Train Plus



Rebuild in Process

CAT 527

TRACK SKIDDER
SWING GRAPPLE
CAB W/AIR

REBUILD PERFORMED BY:



COMPLETION DATE:
JANUARY 15, 2014

The CAT Certified Rebuild Power Train Plus Includes:

- New, Out-of-Crate CAT Engine
- Recondition Radiator, Including All Hoses, Clamps and Seals
- Rebuild Transmission to New CAT Specs
- Rebuild Torque Converter to New CAT Specs
- Rebuild/Recondition Steering Clutches, Brake Modules and Final Drives
- Recondition Equalizer Bar and Pin Bores; Install New Pins, Bearings and Sea
- Replace Pivot/Stub Shafts with New CAT Shafts
- Recondition Track Roller Frames
- Repair Track Guiding Guards at Swing Frames
- Replace Undercarriage with All New CAT Components, Including Track Groups, Rollers and Idlers
- New Rock Guards
- Reseal and Replace Power Train Hoses
- Replace U-Joints and Hardware
- Install New Air Conditioning Pump, Alternator and Wiring Harness
- Recondition Front C Frame
- Complete All CAT Engineering Updates as Needed

Additional Work Performed:

- New Paint
- New Front and Rear Windows
- New Prolenc Snubber and Pins
- Repair Boom and Grapple as Needed

\$330,000

MPi

INCORPORATED

Call Chuck 24/7
530-221-6760
8537 Commerical Way
Redding, CA 96002

SEE ALL OF OUR
AVAILABLE EQUIPMENT
AND ATTACHMENTS AT:
www.mpiequipment.com



2010 CASE 621E XR, Tier III, 162 hp, Case engine, large smooth-edge bucket, good 20.5x25 tires, AC, heat, 27,600 lbs., 3,830 hours, just off lease, Tink roll-out bucket available for additional cost.....\$95,000



2006 JD 544J, very good 20.5x25 radials, 3-yard smooth-edge bucket, cab, AC, joystick, 4,616 hours.....\$79,500

1984 CAT 966D w/Medford log forks, 26.5x25 tires, cab w/ROPS, 3rd valve, runs & works well.....\$57,500

2,000 GALLON ENVIROVAULT FUEL TANK, clean, approximately 13,000 lbs.....\$6,250



Le TOURNEAU LOG STACKER, 60-ton cab, 4x4, 12.7 liter Detroit Series 60, excellent. tires, very clean, good history, from major pipeline job.....CALL



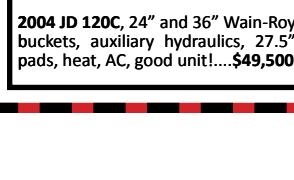
1992 MORBARK 1200 TUB GRINDER, cab, loader, CAT 3412, very little use in last 6 years, meter shows 5,696 hrs, 12 new tires, good unit.....\$79,500



2004 DOOSAN DX300LC, Tier III, 48" bucket HPF link-style thumb, aux. hyd. 197 hp, 65,000 lbs., 4,267 hours, very clean.....\$92,500



2005 TEREX TXC175LC-1, 36" bucket, HPF link-style thumb, cab guard, hard doors, cat walks, 2.124 original hrs, super clean.....\$49,500



2004 JD 120C, 24" and 36" Wain-Roy buckets, auxiliary hydraulics, 27.5" pads, heat, AC, good unit!....\$49,500



GARY PAUL runs Greenup's Caterpillar 330B LL with Waratah 624 Super processor on their shovel logging side, which he said, "...must be 10 years old," but noted, "it does real well." He's a fourth generation logging and his father was a contractor, owning Paul Logging out of Woodland. He's run processors the past 14 years.



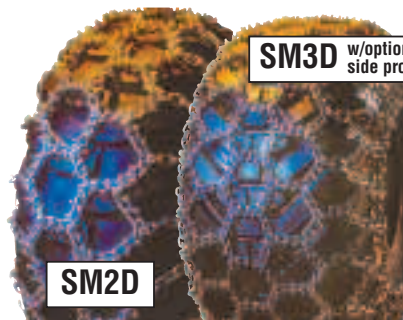
STUART MOONEN shovel logging with this Link-Belt 290LX, is a 35 year journeyman logger, who joined the crew four months ago. He's run equipment 25 years shovel logging most of that time learning as he logged. As with most, he started his career in the brush.

800-439-9073 **White Mountain Chain** 208-267-6215
Bonners Ferry, Idaho • www.whitemountainchain.com

TRYGG

SM2D & SM3D

A heavy duty traction chain for forestry construction and snow clearing. Ultimate traction, smooth riding and trouble-free operation. The chain with an unsurpassed number of studs gives better grip and better wear. Double or triple pattern depending on chain dimension and tire size. Optional sidewall protection as pictured. The SM2D is made to 11, 13, 16 and 19 mm. Chain tightener is recommended for heavy chains.



SM3D w/optional side protection

SM2D



The unique interlocking between the links will prevent the studs from lying down. The studs will stand upright at all times.

TRYGG RING CHAIN



"BEAR PAW"

The workhorse for any forestry operation. Powerful lugs and oversized retainers, etc. ensure long working life and full value for the money. "Bear Paw" are now heat treated in our new sophisticated hardening furnaces. **THROUGH HARD AND CASE HARD!** Chains don't get any tougher!

DOUBLE RING

NEW!

Cleats are added to the connection rings for better



TRYGG

NETLINK



A chain designed strictly for forestry use. This chain is suitable for skidders, forwarders, loaders, etc. Case-hardened net links with a quality second to none.

TRYGG

SMT FLEXI



Tailor the chain to a perfect fit without the use of any tools! - No matter what tire brand or condition. Flexibility and strength of the regular SMT. The Flexi side chain link enables adjustment without tools.

TRYGG

SAFETY GRIP 6X7mm



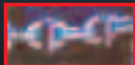
A strong product made of light chain. The ultimate choice for temporary chain usage. The chain will perform well under all working conditions. Tailor your chain to a snug fit on all tires. Plug in tightening rail available on request. For continuous work with snow removal we recommend using the TRYGG SMT



Double studs on top of the vertical links provide extreme traction.



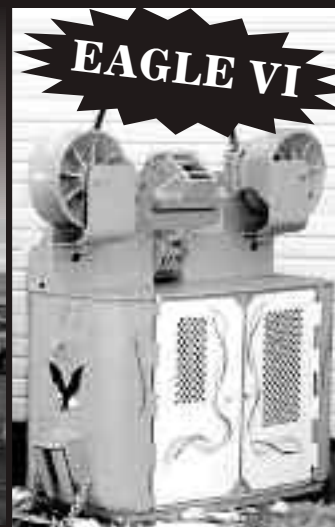
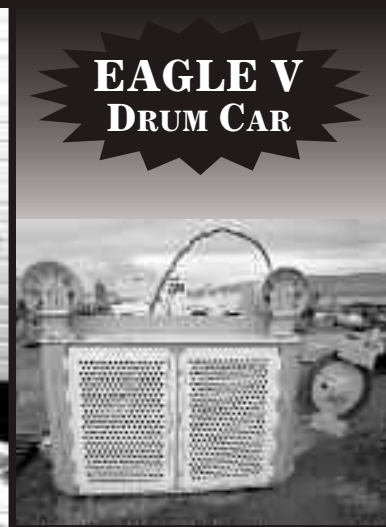
Plug in tightening rail available on request.



Squarelink with wear bars for longer life and better grip!



SUPER EAGLET EAGLE V & EAGLE VI



The Super Eaglet and Eagle VI feature our hydrostatic, reversible slack puller drive making it possible to: 1. Power the tail up as you clear the landing 2. Power up the chainsaws, lunch pails and rigging 3. Drop the line down on the way out 4. Drop the turn down on the way in. (Patent #7213714)

EAGLE CARRIAGE & MACHINE

**Call Today
for a Demo!**

(541) 963-4646

Fax: (541) 963-3415

62500 Commerce Rd, La Grande, OR 97850

www.eaglecarriage.com

After Hours - Sam Baker

(541) 805-9504 cell



ISAAC SMITH drives Greenup Logging's 2000 Kenworth 900B, with Whit-Log gear, Cat 550 power, and pulling a Whit-Log trailer. He's been driving the past three years. This load of logs goes to Teevin's yard in Rainier, Oregon.



A.J. CONANT drives the NO. 5 Greenup Logging truck a '97 Kenworth T800 with 425 Cat power plant and dragging a Reliance mule train, with Hassel bunks. The truck has SI scales. He's been trucking 45 years and just joined the crew four weeks prior.

WRECKING LOGGING EQUIPMENT

EXCAVATORS • CRAWLER TRACTORS • ROCK TRUCKS • LOADERS • GRADERS



Parting Out

2004 Hitachi ZX450LC



Parting Out

1995 Case 9040B



Parting Out

2004 Cat 988G



Parting Out

2002 Link-Belt 4300Q



Parting Out

2004 Deere 2554



Parting Out

1998 Daewoo 220LL



Parting Out

2000 Komatsu WA500-3L



Parting Out

1996 Deere 653E



Parting Out

2002 Timbco 475D



Parting Out

2008 Kobelco ED150

FRALEY TRACTOR, Inc. WRECKING DIV.

(509) 884-7117 • FAX (509) 884-3959 • fti2@nwi.net • 1850 GRANT RD., E. WENATCHEE, WA 98802

CAT EXCAVATORS

E110B; E120B; 314C; 315BL;
320LL; 320BL; 320C; 322CL; 325L;
330BL; 345BL; 350L

CAT TRUCKS

D25D; D25C; D300E; D400D

CAT SKIDDERS

D5H; D4H; 515; 525; 525C

CAT SCRAPERS

615, 621E

CASE

821; 9030B; 9040B; 9050; 9050B;
9060B

GROVE

RT745

LINK-BELT

210LX; 240LX; 3400 CII-Q; 4300 CII;
4300 CII-Q; 5800 CII-Q; 6000Q

KOBELCO

ED150; SK290LC6; SK200LC IV;
SK400LC IV; SK330

JOHN DEERE

120C; 160LC; 590D; 200DLC;
230LC; 2554; 310SE; 330CLC;
450LC; 550H; 544CD; 544G; 624G;
644H; 644G; 648GII; 690E; 710D;
750B-C; 744H; 753GL; 772BH;
850-850BLT; 992D-ELC

SAMSUNG

SE 350LC2

TIMBCO

T425B-C-D; T445B-C-D; T445EXL;
475D; 475EXL

TIMBERKING

TK722; TK1162

KOMATSU

PC120-6; PC130-6; PC138US-2;
PC150-5; PC160LC-7; PC200LC-6;
PC220LC-5; PC220-6E; PC300LC-5;
PC300HD-5; D155AX5; D355A;
D65E-6; WA 200-1; WA180-1; WA400-
1; WA320-1; WA180-3; WA250-3;
WA500-1

TIMBERJACK

608; 628; 1210B; 2628; 2618

HITACHI

ZX27U; ZX120; EX150; EX160;
ZX200LL; EX200-5; EX60;
EX200LC3; EX220-3; EX270-1;
EX300LC1; EX330LC5; EX400LC3;
ZX450LC; EX550LC5; EX700;
EX750-5

VALMET

500T; 860; 892

VOLVO

A25C 6x6 Rock Truck; L330C;
L120E; L180C

WE BUY HEAVY EQUIPMENT FOR PARTS AND RESALE...CALL US!

Visit us on the web at: www.FraleyTractor.com



HERB CAMBERG brings a turn to the landing with "Big Pappa" the nickname given to this '96 Caterpillar 330B LL shovel, with a Pierce grapple, converted to a yoder. They're running an Acme 10 motorized carriage, which Greenup says, "is a really tough little carriage." Camberg's logged for 30 years, the past few years with Greenup. "I started in the rigging," Camberg said. They have 18 Fortronics electronic bells, running a set in each of the yoders, and a set with the big yarder.



**For owners of logging companies
Washington L & I can cost well
above \$30,000 per year!
There is an alternative**

THE ALTERNATIVE

As an example, let's look at a 35 year-old man that does not use tobacco... here's what he'd get for about 2/3 of the cost of L & I.

- Medical Insurance that covers him on-and-off the job, 24/7/365.
- Disability Income Insurance of \$3,000 per month for 10 years!
- Life Insurance of \$500,000 to start, increasing for inflation.
- Supplemental Retirement Income beginning at age 70 of over \$60,000 per year, Tax Free! (Self-completing if disabled!)

Obviously, all this is subject to underwriting and current tax laws, *but I have not met very many sick or uninsurable loggers!*

Call us today! 866-514-3356 toll-free!

360-274-6991 • 25 A Street SW, Castle Rock, Washington
Wayne Lunday, LUTCF, CLU, ChFC
Gail Mowrey, ACSR



■ Circle 182 On Inquiry Card – Pg. 27

ADVANCED HYDRAULIC & INDUSTRIAL SUPPLY



HYDRAULIC SOLUTIONS FOR CHALLENGING ENVIRONMENTS™

WATCH US @ <http://www.youtube.com/user/TaimiHydraulics>

The Swiwell Hydraulic Swivelling Couplings Designed to eliminate torsion on hydraulic hoses. The Swiwell™ in-line swivelling couplings do not use ball bearings, are more robust and will endure extreme operating conditions, providing a life expectancy of up to 10x that of an ordinary swivel.



The Swiroll Spherical Hydraulic Joint

The Swiroll enables hoses to **INDIVIDUALLY** swivel on both sides of the joint, allowing freedom of movement with no torsion. Will fit most harvesting heads



Advanced Hydraulic Supply
4444 N.E. 148TH Avenue, Portland OR, 97230
(503) 289-0354 1-877-887-1730
www.adv-hyd.com

THE HOSE SHOP
856 South Alder, Burlington WA. 98233
(360) 757-3776

■ Circle 181 On Inquiry Card – Pg. 27

Greenup Enterprises

(Continued from Page 4)

Contract logging

In the mid-80s, around '86 Mark Greenup and a cutting partner, John Keller, partnered up buying a logging side from another contractor and formed G&K Logging. "It was a single side, doing salvage and thinning jobs," Jon Greenup explained. Although his grandfather wasn't involved in logging per se, "...he would come out and help dad build roads and stuff," to help the operation out in those early years."

A few years later in 1988 each of the partners went their own way, forming two separate companies, and Greenup Logging emerged.

"It was all ground skidding," Greenup explained, a small operation from the start. "They had a loader, skidder and a crawler, with three operators: skidder operator, a chaser, and dad running the shovel."

Jon Greenup was the only son (along with three daughters), and his dad's companion when he'd be in the woods working on weekends, riding in the cab with his dad and keeping him compa-

ny, then doing a bit more as he grew. "I learned everything sitting behind that Cat loader," with his dad when he was younger.

"I started working in the summers, around 11 or 12," Greenup explained adding, "I'd set chokers behind the right-of-way," road building sides. "I'd do presets, learning as we did it. Dad also let me drive the skidder around when I was smaller, getting fuel and such. When I was 11 I loaded my first truck with that old loader out there (which is in their bone yard to this day). That was on a Saturday, and dad was setting chokers behind the Cat to get a chunk done, when three trucks showed up and I loaded two of them!" He'd have loaded the third as well, "... but the third guy wouldn't let me load it. They were nice logs, 12-13 log loads!" Recalling those times Greenup mirrored a lot of loggers thinking explaining, "When you're that young you want to get into a machine and try it out. It was wonderful! Now not many kids have that opportunity." Then added from his own experience that many such experiences in learning "... trades aren't passed down in this

(Continued on Page 16)

See "Greenup Enterprises"

BRUSH CREW on Camberg's tower side, on the left is 19 year veteran brush man John O'Brien, who joined the crew 1 1/2 years ago, and started logging in Port Orford. Cody Ford logged the past 18 months, with Greenup for five months. "I like it here," he said smiling. He's a fourth generation logger.



ZENDER EQUIPMENT COMPANY

Contact: Kevin Zender (360) 319-7973

Rod Hansen (360) 520-6849

or email: kevin@zenderequipment.com

rod@zenderequipment.com

www.zenderequipment.com • Everson, WA

LOG LOADERS

2005 Hitachi 350, 16,000 hrs, recent repairs	\$97,500
2008 Komatsu PC 200, Pierce grapple, 4,000 hrs	\$199,000
2004 Komatsu PC 300, 11,200 hrs	\$114,500
2008 JD 2554, Jewell grapple, 10,500 hrs. new u/c	POR
2007 Madill 2850C, recent motor, rblt hyd. group, new paint, new u/c, rebushed	\$240,000
2007 Madill 1800, Jewell grapple, 13,100 hrs, good u/c	\$105,000
2007 Madill 2850C, new motor, rblt hyd. group & cys., new paint, new u/c, rebushed	\$260,000
2006 Madill 3800C, hyd group rblt, recent u/c, good cond	\$275,000
2000 Prentice 625 CRX, w/Jewell 3 axle carrier, rblt Cummins/upper, 13,000 hrs, xlent cond	\$135,000
2004 Cat 330C, recent hyd, pump, rblt top end of motor, new u/c, 17,000 hrs	\$150,000
2003 Link-Belt 210LX, Pierce grapple, 12,300 hrs	\$79,500
1997 Link-Belt 2800Q, w/Pierce grapples	\$55,000
1998 T-Bird 1238LL, w/T-Bird grapple, good u/c, recent pump	\$49,500
2007 Kobelco SK 260, Jewell grapple, 11,400 hrs	\$124,500
2004 Kobelco SK 290, Jewell grapple, 13,100 hrs, good u/c	\$89,500
2005 Kobelco SK 210, 14,000 hrs, recent hyd pump, good u/c	\$97,500
2003 Kobelco SK 210, Jewell grapple, 11,600 hrs	\$59,500
1997 Kobelco SK 220, 15,000 hrs, recent rotex, rblt motor & finals	\$49,500
1997 Kobelco SK 200, new Cummins power, 40% u/c	\$35,000

DELIMBERS

2002 JD 330LC, w/03 Waratah 624, recent drive motors, forestry cab	\$120,000
2009 JD 2954, w/06 Waratah 624, 9000 hrs, new pump & drive motor, rebushed	\$249,500
1999 JD 330LC, w/06 Waratah 624, recent motor, color screen	\$125,000
2005 JD 230LC, w/2011 622B, hoe front, 1,000 hrs on head	\$190,000
2009 Cat 320 DFM, w/09 Waratah 622B, 5,700 hrs, xlent cond	\$279,500
2001 Cat 330B, w/08 Waratah 624C, 7,000 hrs, Cat rblt carrier, 4,000 hrs	POR
2007 Kobelco SK 350, w/07 Waratah 624C	\$170,000
1998 Kobelco SK 220, w/03 Log Max 9000, 14,900 hrs on carrier	\$80,000
2004 Link-Belt 240, w/04 7000 Log Max, 16,000 hrs	\$115,000
2004 Link-Belt 210, w/04 Waratah 622B, RB front, new pump	\$90,000
1998 TJ 608B, w/TJ 758 head, 9,000 hrs, good cond., Lots of parts	\$85,000
2005 Waratah 622B head only, 500 hrs head	\$75,000
2004 Waratah 624, w/color screen, recent drive motor, rebushed, good cond	\$67,500
Waratah 624, w/color screen, good cond., w/controls	\$39,500
2004 Link-Belt 240LX, w/Pierce 3348, new chain, 12,300 hrs, new paint, xlent cond	\$135,000
2004 Hitachi ZX250, w/Pierce 3348, new chain, 12,600 hrs, forestry cab	\$125,000
2004 JD 2554, w/Pierce 3348, new motor, rblt delimeter, xlent cond	\$149,500
2004 Madill 1236B, w/DM 4400, new boom, 10,000 hrs, recent motor & pump	\$87,500
2005 Madill 1236, w/DM 4400, excellent cond, new paint	\$105,000
2000 T-BIRD 1236, w/ DM 4400	\$55,000
2002 Kobelco SK 330, w/02 Waratah 624, rblt motor, rb front	\$92,500
2005 Logmax 12000, head only	\$30,000
Hahn Harvester 300, rubber mount, self prop	\$30,000
Danzco PT20M, low mount pull through for skidders or loaders	\$10,000

BUNCHERS

2008 Madill 2250C, 24-7-365 hot saw, recent motor, low hr. on u/c, 9200 hrs. carrier	\$245,000
1997 Madill 3200B, Roto saw, 14,000 hrs	\$47,500
2004 Tigercat 870L, w/ 23" hot saw, 12,500 hrs, rblt motor	\$155,000
2006 JD 953G, 24" hot saw, 10,600 hrs	\$130,000

1996 Timbco 445B, 33" bar saw, 70% u/c, Cummins power	\$37,000
1999 Timbco 445D, 2000 hrs. on pump, motor and u/c, bar saw	\$95,000

EXCAVATORS

2007 Kobelco SK 210 LC, w/clam bucket & brush rake, 9,000 hrs	\$75,000
2000 Link-Belt 2800Q, w/HPF bucket & thumb, 9000 hrs	\$40,000
2004 Link-Belt 240LX, w/2 digging buckets & thumb, pin grabber, new u/c, 13,000 hrs	\$49,500
1999 Cat 322, w/bucket & thumb, 13,200 hrs, rblt motor, c/w heel & 52" grapple	\$49,500
1997 JD 690, c/w bucket & thumb, quick change	\$35,000
2000 Kobelco 135, 5650 hrs	\$35,000

SKIDDERS & DOZERS & GRADERS

2003 Cat 525B, single funct., bunching grapple, 80% 30.5X32 rubber	\$60,000
2004 Cat 525B, dual funct., bunching grapple, w/winch	\$70,000
2010 JD 648H, dual funct., bunching grapple, w/chains, 70% rubber, xlent cond	\$185,000
1995 JD 748E, dual funct. bunching grapple, w/winch, 8,900 hrs., 30.5X32 rubber	\$55,000
1996 JD 548G, dual funct. bunching grapple, w/winch, 11,000 hrs	\$34,000
2010 Cat 527, 3,300 hrs, like new	\$330,000
1998 Cat 527, w/sorting grapple, winch, rblt trans, torque, 14,000 hrs, good u/c	\$150,000
1998 Cat 517, w/swing boom, new paint, 8 roller, rblt finals, pump, new u/c	\$149,500
1992 Cat D5 TSK, w/fixed boom, 60% u/c	\$65,000
Clark Ranger 667, w/winch, 28X26.5, good rubber	\$14,000

FORWARDERS & HARVESTERS

2006 Timber Pro TF 830, w/Log Max 7000, w/quick chng to grple, 5000 hrs, xlent cond	\$330,000
2001 Timber Pro TF 820E, 3,300 hrs, w/ grapple, w/ brush hauling dump bed	\$180,000

YARDERS & SWING YARDERS

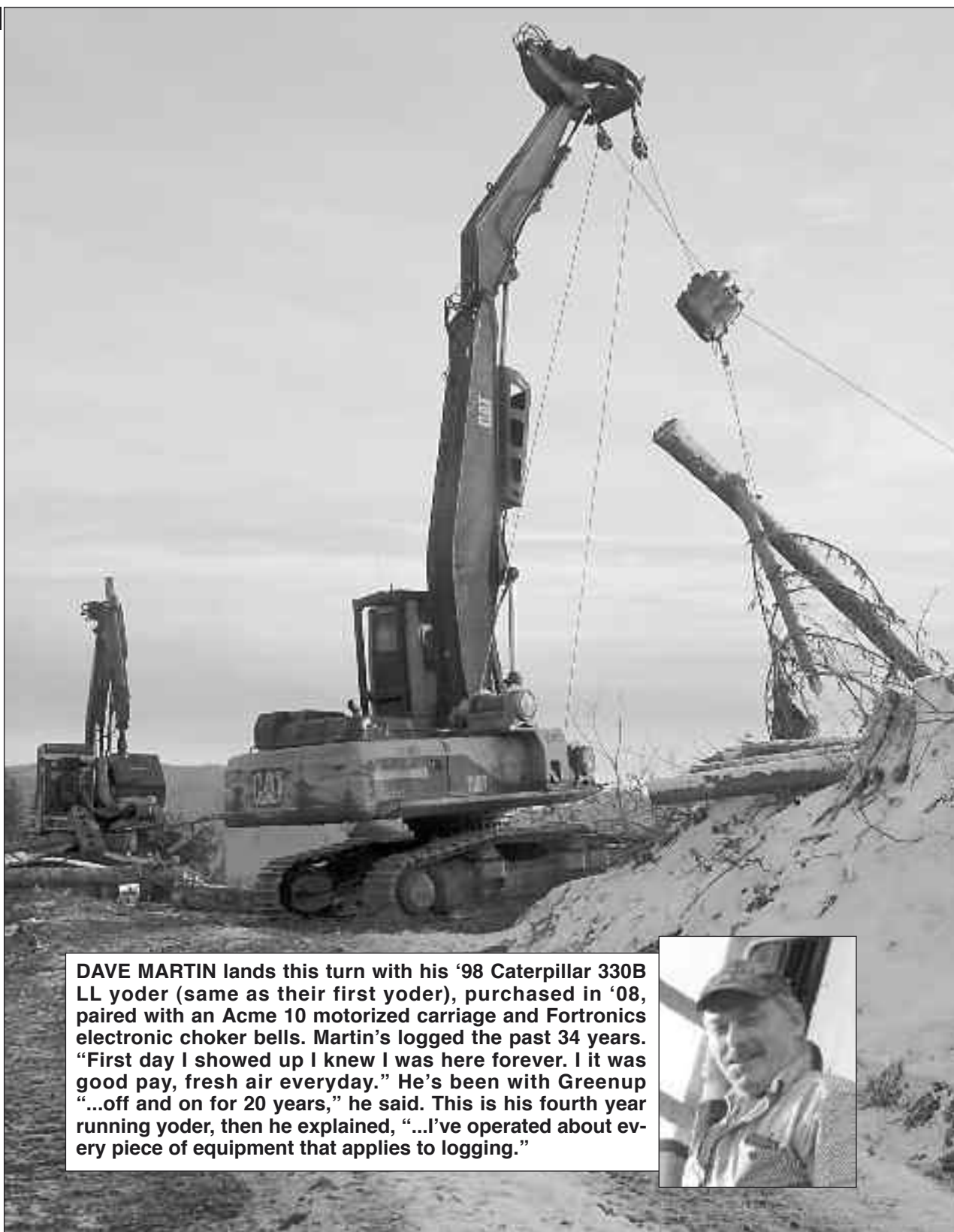
T-Bird PSY 200, Cat power, Allison, Eaton brakes, 3 guyline, tilt cab, long reach drums	\$220,000
T-Bird TMY 57, new lines, 8V92T, c/w 2 Bomans and T-Bird cars, 10,000 hrs on yarder	POR
T-Bird TSY 6140, Cummins power, w/ Super Eaglet	POR
Diamond D210, new Cummins, rebuilt drum set & boom, 1 season on trans, xlent cond	\$280,000
Diamond D210, nice yarder, ready to log	\$280,000
1994 Hitachi 200, w/2 Pullmaster, guyline winch, new paint, work orders	\$130,000
Madill 071, Detroit 8V92T, tall gears, 80% u/c, 171 cab, xlent cond	\$95,000
Madill 071, w/Acme car, 3 guyline, good lines, 8V71	\$85,000
Madill 071, recent 6V92T, rblt torque, good lines, Eagle 2	\$90,000
Skagit 739, T100, self prop, 7 guylines, Cummins KT1150 power	\$210,000
Skagit 737, T90, trl, 4 jack, recent Cummins 855 & Allison rebearing, drums new paint	\$135,000
Edco Wildcat, 6 guyline, new KTA Cummins power, rblt lower unit, offers wanted	POR
T-Bird TMY 45, Cummins 903 power, recent paint, good u/c, w/rigging, Acme 100 car	\$157,500
Skagit BU80C, Cummins 400, Twin Disc., 5 speed, Skagit T90, slf. prop	\$59,500

MOTORIZED CARRIAGES

Boman IV	\$39,500
Boman 9100, w/tree jacks, 500 hrs	\$55,000
Boman 9100, good cond	\$25,000
Eagle V, low hrs., like new	\$75,000
Acme 20, shackle passer	\$25,000

FIRE TRAILERS, TRUCKS & TRAILERS

2007 Chev 4500, 4X4 Dura Max 6.6, Allison trans., service box, 60k	\$49,500
2011 Western Chip trl., 48', 3 axle, rear axle lift, HD for woods app., aluminum body, 4 avl.	\$39,500
2009 Aspen Lowboy, 60 ton, 8'6" flush deck, 2 axle jeep, single axle booster, low miles, Honda	\$155,000



DAVE MARTIN lands this turn with his '98 Caterpillar 330B LL yoder (same as their first yoder), purchased in '08, paired with an Acme 10 motorized carriage and Fortronics electronic choker bells. Martin's logged the past 34 years. "First day I showed up I knew I was here forever. I it was good pay, fresh air everyday." He's been with Greenup "...off and on for 20 years," he said. This is his fourth year running yoder, then he explained, "...I've operated about every piece of equipment that applies to logging."



Greenup Enterprises

(Continued from Page 15)

era," which is a loss to future generations and business.

Next generation

Upon graduation from Estacada High School in June of '86, he had only a vague idea of his future. "I didn't have a clue what I would do," Greenup explained with a smile, and being just 17 at the time his options were somewhat limited as well, then smiled at his college ambitions, "I thought I'd become a forester," though he admitted his motivation was to, "...have my dad come work for me," and thus be able to tell dad what to do. But in spite of his father's interests in his son going to college, "...college wasn't for me." He's enrolled then dropped out two different times.

But fate intervened when one of the key guys

(Continued on Page 17)

See "Greenup Enterprises"



BRUSH CREW on Greenup's second yoder side is 10 year veteran logger Dave Jones (left) from Estacada who's been, "...in the brush the entire time," learning how to set chokers from a mid-40 year old brush man. Justin O'Daniel is from Prineville, Oregon and had been on an Alaskan fishing boat before joining the ranks of loggers with this crew seven months ago. "It's going good, I like it," he said.



KOLLER

North America

24745 Alsea Hwy
Philomath, OR 97370
Phone: 541-929-9582

**2011
Koller
K602 H**
Remote
control, full
downhill
capability
P.O.R.



1995 Koller K501
Four drums, cab, w/lines & carriage ..**P.O.R.**

**2009
Koller
K301 T**
Tractor
Mount
\$65,000



Please call for information
Office: **541-929-9582**

www.KollerNA.com
Brenton@kollerna.com

*Koller North America is a full
parts, sales and service center*

SHANE GRIFFIN clearing the chute and processing logs between the two yoders working on the same job site with Greenups Timbco 425 Hydro-Buncher with LogMax 7000 dangle head processor. He started logging in the brush in '01 starting in Eastern Oregon then moved to the west side and started working with Greenup two years ago. "I really like the LogMax," he said. "They're quick, easy to maintain, and when it breaks down its usually just small stuff." He lives in Mollala and stays near the job site in a Motel 6 during the week.



crew gave it, and it stuck!. It had BU80 drums, the 35-ft. A-Frame, direct drive and a 335 Cummins." While it wasn't pretty it worked well enough for the yarding they had come their way off and on. When yarding they had a three-man brush crew, yarder engineer, chaser, and loader operator. Metusala met its demise when replacing a component exceeded its value, and it was replaced by a truck mount yarder with BU30 drums.

In 2000 they had some big yarder logging jobs that justified their buying West Coast Yarder to handle the work. It worked, it's been their "big" yarder ever since. While it's rarely used, their approach to logging has been consistent: minimal yarder work, mostly shovel or skidder logging, and yarding as needed to complete the job..

The company started doing more small, private logging (farmer patch) jobs then as well, "...and I'd work on that side if the yarder wasn't running," Greenup explained although, "when the yarder was running I was on the yarder side."



Your Trusted Source for Used Forestry & Recycling Equipment



2002 Peterson 2400B
580HP, remote, 7400 hrs - \$159,500



2005 Morbark 2355
Chipper - \$170,000

Skidders

(11) 07-11 Cat 525C	\$55-165,000
09-11 Cat 545C	\$150-165,000
(2) 01/05 Cat 525B	\$39,500-75,000
03 Cat 535B	\$65,000
09/10 Deere 748H	\$144-160,000
08 Deere 648H	\$81,250

Feller Bunchers

06 Cat 521	\$210,000
06 HX 470	\$60,000
07 Prentice 2470	\$35,000
10 Timbco 445	\$266,666
98 Timberjack 608S	\$85,000

Mowers/Mulchers & Others

93 Deere 544	\$30,000
Esco 100" grapple	CALL
Misc Shears & Saws	CALL
08 Fecon FTX 148L	\$185,000
09 Salsco 40' shaving mill	\$70,000
01 Tigercat 20HS shear	\$8,000

Knuckleboom Loaders

11 Deere 437	\$50,000
06 Deere 535	\$30,000

94 Husky XL335

06 Komatsu 220	\$180,000
08/11 Prentice 2410	\$35-145,000
07 Prentice 2384	\$70,000
06 Prentice 384TMS	\$50,000
05 Prentice 410E	\$79,000
95 Prentice 410D	\$36,000
09 Tigercat 234	\$110,000
98 Timberjack 735	\$89,000

Recycling

07/09 DO 3060K/3080K	\$350-590,000
07/09 Doppstadt SM720&K	\$182-265,000
07 Doppstadt AK230	\$225,000
08 Metso ST620 & LT105	\$300,000 ea.
05 Morbark 2355	\$250,000
99 Morbark 3600	\$125,000
11 Peterson 4300	\$350,000
08/09 Peterson 5900	\$250-295,000
06 Peterson 4710B	\$299,000
04 Peterson 4700B	\$235,000
02 Peterson 2400B	\$159,500
01 Peterson 5000G	\$169,500
99/09 Peterson 4800	\$67,500-175,000
06 Woodsman 334	\$118,000

Greenup Enterprises

(Continued from Page 16)

on his father's crew lost his life in a traffic accident. "I knew dad needed help and I didn't want to go to college. My intent was to come to work for a while 'til things leveled out," but a while quickly turned into a life-long love of the business. While many of his classmates were still pursuing their college dreams, "...I was 18 or 19 at the time and making \$18-19/hour, young, in shape, and making a man's wages," all good things. "Five years later I was still making better money than my friends," and loving his work as well.

At that point Greenup Logging was "...primarily a shovel/skidder side," Greenup explained, but the opportunity presented itself for some small tower logging as well, which led them to buying a "home-made A-frame yarder we called 'Metusala,' a nickname one guy on the

A new enterprise

After working and learning more about the business side of logging, Greenup explained, "...dad thought it'd be a good idea to start my own business, to learn what it was like to own it, see where money comes from, time involved, the costs and other realities." In 2001, that led to his purchasing "Lucile" a 1989 Peterbilt 378, 425 Cat power plant and a '99 Wildcat trailer with push up stakes, he purchased from Frank Payne. "The guy I bought it from carried the contract," Greenup explained, "and drove it for the first six months for me too. We used his permits, insurance, everything to help me get started. He really helped me." The new company, Jon Greenup Logging was established,

(Continued on Page 18)

See "Greenup"

COWLITZ RIVER RIGGING

1540 Industrial Way
Longview, WA 98632
(360) 425-6720

www.LoggingSupply.com

Toll Free 1-800-488-3127

LOGGING • CONSTRUCTION • MARINE

888.561.1115

We also BUY Used Forestry & Recycling Equipment

View our equipment online at **IronMart.com**

18 Greenup Enterprises

(Continued from Page 17)

with Jon hiring a full time driver (Chuck Jernigan) while he continued logging for his father's company.

"It was a good lesson in business, gave me the right mindset," he said and was quick to explain, "but I was paid by my dad, so I'd be in early and finish late so my truck would do extra loads, stayed to be sure it was done, so we made a good team."

Jon Greenup purchased his second truck later on, a quick-change lowboy truck that could move equipment or be used as a logger. Today he has six trucks total, "Petes, mostly Kenworths, one Western Star and two dump trucks."

Transitioning to yoders

In the early 2000s Jon Greenup became a partner when he bought half the company shares from his mother when his parents divorced, "...so dad and I were the two shareholders," he explained.

At that same time, looking for additional work they found it with Hancock Forest Management out of Cathlamet, Washington. "They needed wood moved and we did it," Greenup said with a smile.

The nature of one of those jobs led to Greenup's buying their first yoder in 2005 "...cause I needed it on that job and I didn't want to start the old yarder," he explained. With the success of that, "Hancock started lining up a lot of combo jobs, shovel and tower, so we were able to stay busy." It was a winning approach that's worked well ever since.



WILDFRED JONES decking wood on Greenup's first yoder side, in addition to loading trucks, using this Link-Belt 290LX. He's logged the past 30 years, "...starting out cutting logs as a kid in Eastern Oregon.

He lives in Ukiah, Oregon and stays at the Motel 6 near the job site during the week. He's been with Greenup the past six years, and is a second generation logger.

With his father encountering some major health issues at the time, he chose to back away from the logging operations, "...kind of handed over the reins (to me) at that point," then started the nursery business he'd hoped would provide income with his no longer logging.

Not long after that Mark Greenup then purchased his father's airplane, a '62 Cessna 206 in 2005. "He went completely through it, re-

built it so it was in top condition," Greenup explained, "learned how to fly, and flew a lot. He'd fly here to Heppner, or fly up to log hours just to improve. Dad was a decent pilot, took it seriously."

Returning from an Eastern Oregon trip on October 28th, 2008, the

(Continued on Page 19)
See "Greenup"

HYDRAULIC FIREWOOD PROCESSORS



From Dyna Products, maker of the Dyna-Tech Bandmill

Dispose of cull material profitably!



See Our **LIVE** **OUTDOOR DEMO** At:
The Sierra-Cascade Expo,
The Oregon Logging Conf.
& The Redwood Region
Logging Conf.

Call for More Information!

DUNLAP ENTERPRISES
(209) 532-4974

jdunent@aol.com • Soulsbyville, CA



2004 Timbco 425 EXL,
8.9 Cummins, 4 way
levelling, 33" bar
saw, 5,600 hours,
IQAN display mod.,
1 owner 1 operator
\$125,000



Parting Cat 325 BL with
Denharco 3500, nice U/C 70% Cat



Parting Cat 518
S/N 50S, with brush rake



Parting Cat 330L

Cat 12F Road Grader, 500 hrs on
Cat rebuild, good tires.....**\$14,500**

96 Kobelco 220 Mark 4 Log
Loader, new u/c and swing bearing.
.....**\$38,500**



Parting Link-Belt 4300C
& 4300CII



DUKES
PARTS & EQUIPMENT
509-952-9223

204 Butterfield Rd., Yakima, Wa 98901 Shop: 509-469-9420



THE GREENUP FAMILY (L-R) bookkeeper, and mother Jill, Matthew (3 1/2), Brett (14 months), daddy Jon, and Robby (6). Greenup Enterprises, established by Mark Greenup, is the logging company, in addition to Christmas trees, and the nursery; Greenup Logging is their trucking company established by Jon Greenup. Jon and Jill own the company.



DON STONE runs Greenup's road side, and has been with the company the past three years.



ANDY STANLEY is their mechanic, and a veteran logger of 15 years. "He keeps things running for us in the field," Greenup said.

Greenup Enterprises

(Continued from Page 18)

plane lost power as he was approaching the landing in Estacada, the wing hit a tree, "...and that was that," Greenup said. "We went into the worst times for anyone in 2009 with all that turmoil... and we didn't do anything for five months, then Hancock gave us a job, and the China Market arrived."

Since 2009 it's been a steady, gradual improvement for Greenup Enterprises, including their starting work with Cedar Mountain, a private forest management company, who contracts the logging on those

"farmer patches" through Greenup as well.

Today's company

There are two components to the company: Greenup Logging (the trucking side of the business) and Greenup Enterprises, Inc. (the logging, road building sides, and other enterprises), which employs 33 people total including Jon, along with Jill his bride (married in 2004), business partner, bookkeeper and mother of their three rambunctious boys.

(Continued on Page 20)

See "Greenup"

LOGGERS WORLD JANUARY 2014



STEVEN LAZOTT subcontracts processing on the small private jobs logged by Greenup Logging. He owns Lazott Logging, seen here running his Timberking TK732 feller buncher with LogMax 7000 XT dangle head processor. He's a 5th generation logger and lives in Dallas.

Great Buys

2008 Link-Belt 290LXTL Log Loader, with OSHA 2.0 forestry cab, 48 in. riser, 40' LBX log front, standard HD guarding package & Pierce TC58 grapple, Prineville, OR, #019099.....**\$194,500**

2007 Link-Belt 240LXTL with OSHA forestry cab, 48 inch riser, 38' LBX log front, standard HD guarding package, boom hoist cylinder guard and Waratah 622B, Portland, OR, #019106.....**\$252,000**

2005 Link-Belt 210LX, w/LogMax 7000, 7200 hours, Spokane, WA, #018155.....**\$236,000**

2005 Kobelco SK 250LC, 13,600 hours, #019246.....**Call for Price**

2003 Timbco T475E, w/20,400 hrs, runs, as-is, Tacoma, WA, #019056.....**\$85,000**

2002 Waratah HTH622 with steel thumbnail wheels and rubber wheels with chains, newer monochrome monitor and Danfoss handles, Portland, OR, #019061.....**\$46,850**

Sales ▴ Rentals ▴ Service ▴ Parts

Portland | Eugene | Prineville | Seattle | Spokane

800.221.8512 800.342.6780 888.662.2940 800.622.8876 800.945.9168

Link-Belt

Tigercat

Kawasaki

TRIAD
MACHINERY
CONSTRUCTION
AND FORESTRY

www.triadmachinery.com

■ Circle 190 On Inquiry Card – Pg. 27

USED PARTS FOR

CONSTRUCTION & LOGGING MACHINERY

**Crawlers, Loaders, Trenchers, Excavators,
Backhoes, Skidders, Skid-Steers,
Engines and Transmissions**

"Rely on our Experience - Est. 1967"



1-800-626-6046

**Schaefer
Enterprises**

4535 St. Rt. 3 N. • P. O. Box 136, Wolf Lake, IL

www.sewlparts.com - parts@sewlparts.com

Most Major Credit Cards Accepted

■ Circle 189 On Inquiry Card – Pg. 27

20 Greenup Enterprises

(Continued from Page 19)

LOGGERS WORLD JANUARY 2014

Side one has two shovel logging operations sharing a processor on the same site; side two has both their yoders working close by, which share a dangle-head processor; third side is their West Coast Falcon tower and processor; and side four a tractor side using a skidder, crawler, loader, and dangle head processor. Tower and yoder sides were using 18 Fortronics electronic choker bells, which includes spares, fast, convenient, and safe.

In addition Greenup had a road building and maintenance side as well.

Greenups have their own Tiger-cat 830 feller buncher with Quadco intermittent, operated by veteran logger Keith Morris, used on the appropriate feller buncher ground.

They contract their hand cutting with Doug Maurer, owner of Maurer Cutting, out of Molalla.



JON GREENUP at 14-15 learning the business running a Case 580 crawler with a winch they'd used in thinnings. Hi Brad!



GREENUP LOGGING'S FIRST TRUCK dubbed "Lucille" is this '89 Peterbilt 378, with a 425 Cat engine and a '99 Wildcat trailer along with his first employee, Chuck Jernigan, who is still with the company today. The picture was taken around 2003.

Greenup explained. "Our truck boss in Washington is Todd McElhaney, he's out of St. Helens (Oregon). In Oregon Jon does his own scheduling, adding, "I call Todd when I need extra trucks."

In addition to their mentioned businesses, there's also the nursery, the firewood, and lastly the Christmas tree businesses which also run under the Greenup Enterprises banner, those businesses are located near the company shop and the Greenup's home. "I've done the firewood off and on from when I was a kid," Greenup explained. "We always did firewood: 20-30 cords a year, but we also deliver truck loads

full for others to cut."

On average the shovel sides work 55+ hours a week depending on demand, yarder crews work 45-50 hours a week, again dependent on demand.

They also have a simple IRA plan and health insurance coverage for employees with the option for family to buy in.

Three years ago Greenup hired, "...Chad Wheeler as our forester," he said. "He's my number two guy, helps me bid, takes care of the Fed, State, BLM sales. He keeps me organized."

Through the few days we spent, it was clear much of the company's success came from the skills of a very capable crew, combined with Greenup's understanding and building those crews to run well, cooperatively, and professionally, maintaining good humor and camaraderie. "Honestly, the reason we're doing so well is because we have awesome

guys! My guys are very dedicated, very loyal," he said smiling. "That's why we have all the work: Quality! My guys are quality guys, and work their butts off! I can't give enough credit to my guys: 95% of them are irreplaceable. It's all about chemistry: the right guys in the right spot," Greenup added. And in the day of building strong relationships with crew and customers, "...we've surrounded ourselves with good people, and they respect other people."

At 35, Jon Greenup and wife Jill have a good positioning in what appears to be a very good series of years ahead of them. Given another 25 years, his own sons, Robby (six), Matt (three and a half), and Brett (fourteen months) could be in position for a successful transition into a third generation of Greenup Enterprises. Certainly the attitude is being instilled now as they grow with a growing company.



PROTECT, PRESERVE, WATERPROOF BOOTS AND CLOTHING



HEAVY DUTY LP

Extremely wet or chemical conditions require Heavy Duty protection. Originally developed for wildland firefighters



LEATHER OIL

Dry weather ruins leather. It dries out. Prevent scuffs, cracks and dry rot with natural oils



WATER SHIELD

Waterproofs virtually everything. Coats, bibs, hats, gloves. Safe, Odorless, non-aerosol pump 8 or 16 oz

OBENAUF'S
Leather Preservatives

Peck, ID **208-486-6640**

I BUY LOG SKIDDERS



- **Dozers**
- **Loaders**
- **Excavators**

1-503-545-0007



EPA says taking over private property will benefit the economy

Can the EPA run your property better than you? The Environmental Protection Agency says that its proposal to extend its regulatory powers over wetlands and waterways would produce economic benefits.

Republican lawmakers warn that the agency is trying to extend its power to regulate private property.

The EPA's rule would redefine the term "waters of the United States" to include all "tributaries, regardless of size and flow, and all lakes, ponds and wetlands within a floodplain" reports E&E News. Other bodies of water, "such as geographically isolated wetlands, would have to be shown on a case-by-case basis to have a significant chemical, physical or biological effect on larger waterways downstream - a major point of concern for environmental groups" E&E added.

According to a document obtained by E&E News purporting to be from the EPA, the Clean Water Act rule would cost the U.S. between \$133.7 million and \$231 million per year and yield yearly benefits from \$300.7 million to \$397.6 million - meaning the rule could produce up to \$263.9 million in economic benefits a year.

Republicans are displeased.

"The EPA's draft water rule is a massive power grab of private property across the U.S. This could be the largest expansion of EPA regulatory authority ever," said Texas Republican Rep. Lamar Smith. "If the draft

rule is approved, it would allow the EPA to regulate virtually every body of water in the United States, including private and public lakes, ponds and streams."

The EPA says that claims of private property takeovers are false. The agency told Fox News that the draft water rule would "not expand EPA's or the (Army Corps of Engineers') jurisdiction or protect any new waters that have not historically been covered under the Clean Water Act."

Environmentalists have applauded the EPA's rule as much needed clarification under the Clean Water Act, arguing that previous court decisions had caused confusion over what waterways the agency had authority over.

"The benefits of protecting our rivers, lakes and streams are clear," said Ally Fields, a clean water advocate at Environment America. "With the drinking water for 117 million Americans at risk, it's time for the EPA to fix the Clean Water Act and protect all our waterways."

The EPA is basing its rule on a draft environmental report looking into the connectivity of waterways. The report has yet to be reviewed by the EPA's science advisory panel and Republican lawmakers have urged the White House to put a hold on the rule until it has been reviewed.

"If EPA moves forward with this draft rule, as they have already committed to, the property rights of millions of Americans would be at stake," said Louisiana Republican Sen. David Vitter, who joined with two House Re-

publicans in asking the White House to stall the rule last month until it has been fully reviewed.

"The agency's own science advisors have not had the opportunity to review the science underpinning this rule," said Rep. Smith. "Any rule that could give EPA the authority to tell us what to do in our own backyards needs to be supported by sound science."

- <http://dailycaller.com>

NC landowner wins Log-A-Load 25th Anniversary Deere Gator

Wyatt Fountain a Winterville, NC landowner has won the Log A Load for Kids 25th Anniversary John Deere Gator RSX850i. The winning Sweepstakes entry was drawn at the South Carolina Annual Meeting in October by Allison McFadden the daughter of the SC Forestry Association Chair Amy McFadden.

In accepting the Gator Wyatt Fountain noted, "My family is very pleased and excited to be the recipient of this special Log A Load 25th Anniversary Deere Gator. We look forward to doing our part to help the NC Log A Load for Kids Program and CMN Children's Hospitals in the future."

National Outstanding Loggers T.W. Byrd's Sons, Flint Equipment, and John Deere Construction and Forestry donated the John Deere RSX850i Gator Utility Vehicle to

commemorate the 25th Anniversary of the Log A Load For Kids(r) program.

"As a result of the generosity of loggers and others, Log A Load For Kids(r) raises over \$1.6 million each year to help injured and sick children at Children's Miracle Network (CMN) Children's Hospitals," stated National Log A Load For Kids(r) Chair Rich Palermo. "The generous donation of a RSX850i John Deere Gator helped raise an additional \$46,000 for CMN Children's Hospitals in 2013. All of the donations raised through this Gator Sweepstakes remained in the state where they were contributed."

The Forest Resources Association Inc. (FRA) is the National Sponsor of the Log A Load For Kids(r) program. FRA is a nonprofit trade association concerned with the safe, efficient, and sustainable harvest of forest products and their transport from woods to mill. FRA represents wood consumers, independent logging contractors, and wood dealers, as well as businesses providing products and services to the forest resource-based industries.

ACA will cost manufacturers \$22.2 billion 2014-2016

It's going to be a while before we can accurately measure the entire

(Continued on Page 26)
See "Roundup"

Meet Mr. Timberjack



JOHN DEERE



Mike Thomas



YOU HAVE TIMBERJACK QUESTIONS, WE HAVE TIMBERJACK ANSWERS!

Call Mike Thomas at (406) 549-4171 here in Missoula. Mike has the experience and knowledge to help with your needs. He is also knowledgeable with "Clark" powertrains and Cummins B & C engine inquiries. He's great with obsolete parts and loves helping customers with their difficult parts and component needs.

**** Now parting out 1997 TJ 2618 Harvester ****

■ Circle 194 On Inquiry Card - Pg. 27



SEPTEMBER 25, 26, 27, 2014

**PORT BLAKELY TREE FARM
MOLALLA, OREGON**

**Host Hotel: Oregon Garden Resort
Silverton, Oregon**

**www.pacificloggingcongress.com
425-413-2808**

■ Circle 194 On Inquiry Card - Pg. 27



Summary Judgment....

Modern-Day Luddites in Mora, County, New Mexico

by William Perry Pendley

President Reagan would not have been surprised by the 2-1 vote of the Mora County, New Mexico Commission in April 2013 pro-

hibiting oil and gas activities, not just those using hydraulic fracturing, and waging war on corporate entities. Reagan would have called

them "modern-day Luddites." "For those who don't know," Reagan explained, "the Luddites were people who wanted to stop the industrial revolution back in the last century. They took to the streets and tried to smash factory machinery then."

"Modern-day Luddites," however, need not take to the streets; instead, they can rush to a courthouse. Declared one, "We're crazy to sit in trees when there's this incredible law[, the Endangered Species Act (ESA),] where we can make people do whatever we want." Therefore, as Stephen Moore wrote in the Wall Street Journal, environmental groups, using the ESA, sue federal

officials who in turn quickly settle the lawsuits, pay off the groups and close lands to oil and gas activity.

Meanwhile, encouraged by the lawlessness in Washington, D.C. where federal officials imperially channel Humpty Dumpty ("When I use a word, it means just what I choose it to mean-neither more nor less."), local officials who want to stop energy development adopt a "sue us if you dare" strategy. Using a perfect storm of environmental extremism, leftwing political demagoguery, and runaway NIMBY-ism

(Continued on Page 23)

See "Pendley"

IRONMART

TOLL FREE: 1-800-462-8283

RATES: Space available at \$25.00 per column inch. Each ad is separately boxed for prominent display of your machinery or message.

DEADLINES: by mail, 5th of month prior to publication. We will accept faxed copy

(fax #: 360-262-3337) also until 7th of month. Phone your order toll free 8:30-5:00 p.m. Monday-Friday Pacific Time.

Use your VISA or MasterCard



EQUIPMENT FINANCING

- ☐ Low Rates
- ☐ Fast Approvals
- ☐ Easy Credit Application

YOU FIND THE EQUIPMENT
WE PAY FOR IT!

AMERICAN LEASING &
FINANCIAL CO

800-644-1182

HUNT & FISH & WORK in

WESTERN MONTANA
Triple W Equipment is looking to hire high level John Deere Technicians, both Construction/Forestry and Agricultural.

Interested?

Call 406-549-4171

Ask for Ken Williams M

Cat 910 Loader, s/n 80U...

.....\$17,500

Cat D8, winch/blade/brush rake.....\$8,500

Used D2 & TD9, both w/blades\$2,000ea

1-877-842-9408 I

LOTS OF CLARK SKIDDER PARTS,

V6 378 Cummins
541-390-8185 X

CASE 9050 Log Loader Parts/Components For

Sale, just in.

253-536-0600 K

TIMBCO USED PARTS

445 Finals & Motors, Cat 330
& Lohmann GFT80
Boom-Stick-Tool Cyl.

Rexroth Track Pump, Valve
Sections

All Items Inspected

Call Kevin 877-563-8899 or
250-565-5222

khodgins@prolenc.com X

The Lusty Life of Loon Lake Lloyd

Illustrations, Photographs 400 Page Book

WWII Marine, Gyppo
Logger & Resort Owner

\$20

(541) 271-0504 (includes S&H)
100 River Bend Rd., Spc. 53, Reedsport, OR 97467 X

Want to Buy: KT and KTA
Cummins Engines, any
condition, running or not, and
parts. We pick up and pay
cash Call 501-834-3425 or
fax 501-835-6505 X

TURNTABLE BEARINGS INSTALLED

at our shop. Reasonable rates,
FREE ESTIMATES
541-747-5517 X

Approx, 1,000ft of Poly
Core 5/8" cable from crane,
very good cond., 60 cents
per foot 541-549-6579 X

We do all types of
equipment painting at our
shop. Free Estimates. The
Ballenger Co., Springfield,
OR 800-774-5517 X

*** 40 YEARS ***

And JACK HARRIMAN is
still Selling HEAVY DUTY
MECHANICS TRUCKS
CELL 1-605-421-049 X

THE BRIX LOGGING STORY

In The Woods of

Washington and Oregon
A limited edition hardbound
book written by Bryan
Penttila and Peter Brix is now
available from the Appelo
Archives Center in Naselle,
Wa. Full of historic logging
photos and detailed maps.

WHEN LOGGING WAS LOGGING,

100 Years of Big Timber in
SW Washington

Buy online

www.appeloarchives.org

or call (360) 484-7103

for more info. Q

NOW HIRING for 2014 Season In Alaska

Rural Camp Loggers,
Truckers &
Mechanics DOE

907-680-2304

egtlogging@gmail.com L

40' to 89' (No 70' available)
flat car and box car
bottoms available for
bridges, best prices. 360-426-
8386 fehorse@basicisp.net X

100% FINANCING

New & Used Equipment

Great Rates

Seasonal Payments Available

Start-Ups Welcome

Threshold Financial

www.thresholdfinancial.net

888-280-9900 V

**WANTED: Large Bull Block,
High Lead Block, 24"**
sheave or larger any cond for
display, Also giant logging
tongs, tree shoe, tree jack &
old logging tool catalogs
needed. Bob 360-687-1883
or 360-608-2583 T13

WANTED:
TRACK LOG LOADER or
EXCAVATOR, over 120k#,
repairs ok, under \$30,000.
503-397-4226 L

BEAR PAW SKIDDER CHAINS

for 24.5 x 32 tires,
little used, 4 for
\$2,400, also tires.

360-942-7168 nc

Connally Finishes

Heavy Equipment
Abrasive Blast & Paint
Company

Portable or Our Shop
in Yelm

Tracy Connally

360.458.5234 K

Pendley

(Continued from Page 22)

(not-in-my-back-yard-ism), these officials blatantly ignore constitutional guarantees and federal and State

laws.

Thus it was that Mora County, New Mexico, population 4,881, which sits astride I-25, assisted by a radical "environmental" group from Pennsylvania, adopted a "local bill of rights" that bars use of hydraulic fracturing, forbids all oil and gas development, and strips corporate entities of their constitutional and legal rights across the county's 1,993 square miles. The Community Environmental Legal Defense Fund, which drafted the ordinance and 150 others like it around the country, says it is part of a "growing people's movement for community and nature's rights."

Although some ordinance supporters are dismayed that Mora County is being used by an outside advocacy group as a "soapbox," especially given its potential cost-\$100,000, even with free lawyers-others are eager to slug it out in court. "We're ready for this fight," said one commissioner in response to a lawsuit filed in November by three landowners and a trade organization-the Independent Petroleum Association of New Mexico-asserting a host of constitutional violations

and breaches of federal and State law.

Much is at stake. New Mexico has been a major producer of oil and natural gas since their discovery in the State in the 1920s; they are a lynchpin of the State's economy and are essential for its continued fiscal health. In 2012, 27 percent of New Mexico's general fund revenues came from taxes and royalties on oil, natural gas, and carbon dioxide production. Over the years, oil and gas activity has contributed over 90 percent of the principal in the Severance Tax and Land Grant Permanent Funds, the earnings on which are used to fund schools, special charities and institutions, and other state governmental operations. Other petroleum tax receipts go directly into the State's general budget. More than 88,000 New Mexican citizens are employed directly by the oil and gas industry.

Since 1978, that industry has been regulated by the New Mexico Oil and Gas Act, which created the Oil Conservation Commission and

(Continued on Page 26)
See "Pendley"

LOGGERS WORLD JANUARY 2014

SCHMUNK'S TIRE CENTER

2650 MAIN
SPRINGFIELD, OR 97477
**"One of the Northwest's
Largest Chain Distributors"**



TOLL FREE 1-800-242-8473

541-746-1604 • Ask for Dan
HOURS: 8 A.M. to 5:30 P.M.
Email: dan@schmunks.com

SKIDDER AND LOADER CHAINS

RING STYLE • 23.1 x 26 (9/16")

(1495.⁹⁵) PR.

CAM LOCK TRUCK CHAINS

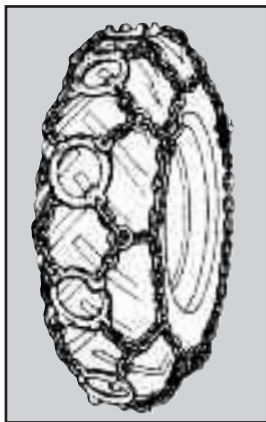
SINGLES **(54.⁹⁵)** • DUALS **(109.⁹⁵)**

"Huge Inventory"

RING STYLE

of Truck & Skidder Chain in other sizes available at Similar Savings

Ask about our Large Stock of Used Off-Road Tires



■ Circle 197 On Inquiry Card – Pg. 27

CROWLEY EQUIPMENT, INC.

2005 Timbco T-445EXL
W/Quadco 360 Hotsaw
Call For More Info.



2007 Hitachi ZX200
10,500 hours
\$135,000



1997 Diamond D-210
Call for More Info.



2009 Cat 330D,
8,900 hrs.
\$240,000

LOG LOADERS

2012 Cat 320D
2011 John Deere 2454D
2010 John Deere 3754D
2009 Cat 330D
2008 Kobelco SK295
2007 John Deere 3554
2007 Hitachi ZX200
2007 Kobelco SK210
2007 Madill 3800C
2006 John Deere 2054
2005 Cat 330C
2005 Doosan DX300 LL
2005 Komatsu PC220
2005 Komatsu PC300
2004 Cat 330C
(2) 2004 Linkbelt 240LX
2004 Linkbelt 350 w/2 Pullmaster Drums
2003 Linkbelt 290LX
2002 John Deere 200LC
2002 Linkbelt 210LX W/Tong Thrower
2000 Linkbelt 3400Q W/Winch
1998 Thunderbird 1240

YARDERS

2000 Cat 320B W/Timbermaster
1998 John Deere 892
W/Timbermaster
Christy
Edco
Koller K501
Madill 071
Thunderbird TSY255
Thunderbird TTY45

PROCESSORS & DELIMBERS

2012 Cat 320DLL W/Waratah 622B
2012 Linkbelt 240X2 W/Pierce 3348
2009 Kobelco SK260LL W/Logmax 7000XT
2008 John Deere 2554 W/Pierce 3348

PROCESSORS & DELIMBERS

Cont.

2008 Linkbelt 240LX W/Pierce 3348
2008 Valmet 941.1 W/370.22008
2006 Hitachi 250 w/Pierce 3348
2006 Komatsu PC200RB W/622B Waratah
2006 Linkbelt 210LX W/Logmax 7000
2006 Valmet EX10 W/370.2 Harvester
2005 John Deere 2554 W/Waratah 622B
2005 Valmet EX10 W/370.2 Harvester
2004 Cat 325CLL W/Waratah 622B
2004 Linkbelt 240LX W/Pierce
2004 Madill 1800 W/Waratah 624
2003 Daewoo 300 W/Pierce 3348
2002 Komatsu PC220LL W/05 622B Waratah
2000 Linkbelt 3400Q W/Pierce 3345

1998 Timberjack 608B
W/Koehring 762C Harvester
FORWARDERS

2007 Cat 564

2006 John Deere 1710D
1996 Timberjack 1210
1994 Valmet 860

FELLER BUNCHERS

2012 John Deere 959K
2008 Tigercat LX830C
2007 Timbco T-445EXL
2005 Tigercat L870
2005 Timbco T-445EXL W/360 Degree Quadco's
2004 Timbco T-445EXL W/Barsaw
2003 Timbco 445E w/hotsaw
2002 Madill T2200B
2002 Timbco 475
1995 Timbco T445C W/Barsaw

EXCAVATORS

2005 Cat 308C
2005 John Deere 135
1998 Komatsu PC200
SKIDDERS/DOZERS
2012 John Deere 959K
2008 Cat D6T XW
2003 Cat D5HXL
2003 John Deere 548G3
2001 Cat 517 W/Esco Swing Boom
1998 Cat 527 W/Grapple, Winch
1998 Cat 527
1998 Cat TD15 W/Grapple
1990 Cat D4H w/Winch
1990 Cat D5H W/Grapple
1989 Cat D5H W/Grapple, Winch
1989 Cat D6H W/Grapple
Cat D8K

Cat D7E W/Arch, Winch
Cat D7F W/Esco Swing Boom
Cat D7G Arch/Winch
Cat D7H W/Ripper
Cat D6D W/Arch, Winch
Cat D6C
Cat D6RXL
Deere 350B

CHIPPERS/GRINDERS

Morbark 6036
Morbark 30RXL

Super Beaver Screen
MISCELLANEOUS

2008 Logmax 12000
2007 Cat 564 Forwarder
2001 Taylor TLS900 Log Stacker
Atlas Copco 185CFM Air Compressor
(2) Pull Master HL25-4 Winches
Timbco Barsaw
Quadco 5600
Medford Log Forks (Cat 966)
Satco 630 Grapple Saw
Jewell MH12BHD Dirt Clam
PARTING OUT
Komatsu WA600



2008 Tigercat LX830C
8,500 hrs., Quadco 360°
intermittent saw
\$250,000



**1994
Thunderbird
TSY255**
**Call for
More Info.**



2012 Cat 320D Log Loader
W/Waratah 622B, 1,200 Hrs.
P.O.R.



**2001
Taylor
TLS900
Log
Stacker,**
11,000 Hours
\$110,000

Main Office/Mike: (541) 688-5924 • Mike Cell: (541) 954-7643 • Eric Cell: (541) 206-2252 • Fax: (541) 688-0704

www.CrowleyEquipment.com • email: mike@CrowleyEquipment.com • eric@CrowleyEquipment.com



As We See It....

WHAT ARE THEY DOING FOR YOU?

I'm sure most everyone has heard this phrase in some form or another during their lifetime and many have quite possibly even used it themselves. It is one of those phrases that is used all too often today in a multitude of situations but for the sake of this article it will be in reference to State, Regional, and National logging trade associations.

What are they doing for you?

In very simple terms, they are your "voice" and they represent you and other like minded individuals on a variety of topics. Our associations represent us and our interests by attending meetings, monitoring legislation and testifying before committees on our

behalf - just to name a few. The saying "there is strength in numbers" is especially true when it comes to trade associations. Take any issue your association is working on and try to get the same impact on an individual basis as your association gets from one person representing its entire membership.

I once read that when times are tough one of the first budget items cut for many businesses is advertising. Actually, this is when they need advertising the most.

That same line of thinking holds true for membership dues to trade associations. When times are good - membership increases allowing asso-

ciations to do more, but when membership drops due to economic downturn, the associations will not be able to offer the same level of service previously offered - and that is when it will be needed more than ever.

At a recent meeting the discussion turned to how to increase membership of our association and more specifically how to recruit that segment of the industry that doesn't join because "they are getting the benefits anyways." A friend summed it up by referring to those individuals as "welfare loggers" - enjoying the fruits of other's labor. Although a bit harsh, he does make a very valid point. While there will always be those who ride the shirt-tails of others, I believe with the support of those individuals, the associations could accomplish even more than they would without their support.

The American Loggers Council (ALC) tries to support those who support it. While that works well in regards to our sponsors I realize that is not always the case when talking

about potential members. A potential member will benefit from what ALC does just as a current member, but that is where strength in numbers comes into play. Currently ALC represents 30 states. Our goal is to represent every state that has a commercial timber harvesting industry.

The ALC has been the voice of professional loggers in this country for nearly twenty years and has accomplished many things in that time. It was formed in 1994 after the adoption of the Sustainable Forestry Initiative by the AFPA. A group of loggers decided that they needed a voice on the national level to challenge issues that impacted them. Nearly twenty years later we are still trying to enhance the logging profession by creating a more level playing field for all loggers in this country, most recently by submitting comments to the Sustainable Forestry Board on programs for logger training and education, as well



BRIAN NELSON
ALC President
Cornell, Michigan

(Continued on Page 26)
See "As We See It"



Call (800) 422-0074 or join
online at www.loggers.com

Membership Highlights...

- Master Logger Program (exceeds SFI logger training requirements)
- Monthly Springboard Magazine
- First aid/cpr and pilot car training
- Log A Load For Kids® - giving campaign for Children's Hospitals
- WCLA Insurance Agency - top coverage for the timber industry
- Employee benefits programs through WCLA's benefits partner: Kibble & Prentice
- WCLA Claims Management Program - providing the benefit of savings on L & I premium costs, improved safety standards and reduced claims costs

■ Circle 198 On Inquiry Card - Pg. 27



Hahn Tree Length Harvester on Tracks, 7,550 original hours, this is a low hour machine that can make quality logs economically.....**\$55,000**



Link-Belt 3400 Quantum w/Denis DT3000 Delimber, Clean machine, repairs in progress **Call For Pictures & More Information**



225D Caterpillar Log Loader on 30 ton Pierce SPP carrier, turbo 3208 Cat in upper, 6v92T Detroit w/Allison in carrier, factory mounted Pierce boom & grapple (not adapter), machine is working daily, runs excellent & travels down the road well.....**\$45,000**

Link-Belt 3400 CII W/Pierce Boom & Grapple, 0 hours on Isuzu engine overhaul, excellent condition for its age, in process.....**\$35,000**

425C Timbco with bar saw, 8.3 Cummins and plumbed for hot saw, repairs in process.....**\$45,000**

Northwest Forest Products Inc.
509-949-3772

■ Circle 197 On Inquiry Card - Pg. 27

WANTED

Shop Manager Needed

Aggregates West, Inc. is seeking well-qualified applicants for the position of Shop Manager at our Whatcom County shop facility.

To be considered, applicants must demonstrate knowledge of maintenance and repairs of a broad-range of heavy equipment and on/off-road gravel trucks. This position is responsible for monitoring operating conditions of equipment at several geographic locations, overseeing and training of maintenance staff, preparing work orders, pricing parts and labor, and making recommendations to company management on repairs and replacement decisions.

This is a full-time position, with a very competitive pay and benefit package.

Interested applicants can send their work history/resume to **Annette Anderson** at aanderson@aggwest.com or **360-966-3641**, or visit our website at aggwest.com

AGGREGATES WEST, INC.

■ Circle 199 On Inquiry Card - Pg. 27

SHOW AND SELL

Send your Black and White or Color photo and a description of what you are selling (try to keep it within 20 words - 1 item per ad) and we'll publish it in the Show & Sell for just \$85.00. Mail (or email to logworld@aol.com) your information to Loggers World, 4206 Jackson Hwy., Chehalis, WA 98532. Deadline is 5th of the month preceeding publication.

25

LOGGERS WORLD JANUARY 2014



1995 Koller 501, 3-Drums, Good Lines, Ready To Log! \$58,000 541-515-8098

L



**D8H-46A, S/N 12527, Semi U Dozer Excellent Condition-work ready \$18,950 OBO
Call John 360-478-0905**

L



2013 Ford F750, 300hp, Feterl body & crane, concealed door hinges. 855-498-0610

L



Linkbelt 2800 Quantum log loader, good cond., \$36,500OBO 530-258-1667

L



John Deere 753 GL feller buncher, in good working order, working daily, good u/c, \$87,500. 406-793-2210

L



Ramey 8,000lb log loader Ford truck, good cond., \$6,500OBO 530-258-1667

L



2001 Tiger Cat 620 Log Skidder, 5.9L Cummins, 360 grapple, hydrostatic drive, winch & grapple, \$39,500. 503-545-0007

L



1999 Bomag Model 142PDB-2 Compactor, 1,400hrs, good shape ready for work, Asking \$19,500. Located in Northern CA. 209-256-0364

L



Case Log Loader, 57,000 lbs, runs good, Pierce boom/Young 360 degree grapple, good U/C. \$15,900. 503-784-1128

L



2001 Kenworth T800, Cat C15, 550hp, 18spd, 46k rears, dbl lockers, New Way air susp, steerable lift, 245iwb, air-slide 5th wheel, 3/8 steel frame, dual cleaners, dual stacks, heavy bumper w/heavy hitch, V.I.P. interior, day light doors, easy reach dash, 24.5 all alum, fully accessorized heavy haul lowboy truck. 509-220-5025

L



Cat D6D, one owner, 80% undercarriage, angle blade w/twin hyd. tilts, w/high lead winch, P.O.R. 509-220-5025, 208-755-0685 or 888-272-8733

L



1987 Kenworth log truck & trailer, very good cond., \$24,500OBO Call for info 530-258-1667

L

(Continued from Page 21)

impact the Affordable Care Act has or is having on American businesses. However, I recently calculated some of the easily isolated costs of implementing the ACA for manufacturers over the next three years. By estimating the impact on manufacturers as an industry, I hoped to provide some perspective on what the law is asking of our economy as a whole and it's not good.

Over the next three years, it will cost manufacturers in the United States at least \$22.2 billion to cover just the new fees, taxes, surcharges and administrative compliance requirements contained in the ACA. This estimate only includes the \$63.00 per participant reinsurance fee, the \$2.00 per participant Patient Centered Outcomes Research Institute (PCORI) fee, additional paperwork and reporting requirements to the Internal Revenue Service and other agencies, the medical device manufacturer tax, and the pharmaceutical manufacturer tax. Again, these are just the new fees, taxes and administrative burdens manufacturers will have to pay over the next three years.

Employees and their families will not get one more doctor visit, one more prescription filled or any healthcare services at all. It's simply added cost to manufacturers and likely lower wages for employees. According to the Kaiser Family Foundation, about 76 percent of manufacturers offer health insurance to their employees and roughly 83 percent of them enroll in their employer's coverage, which is among the highest across industries. Manufacturers have consistently demonstrated a commitment to their workforce, but it is being undermined at nearly every turn by the ACA.

At no time in history has increased the cost of everything associated

with a product, service or good decreased the cost of that product.

The ACA is not a bill, it is not theoretical, it is the law. Manufacturers have no choice, but to follow it. The notion of doing away with the law is appealing in many regards, but also unrealistic. As the organization representing 12,000 manufacturers and 12 million people who make things here in America, we're asking Members of Congress to look at all federal laws ? including provisions of the ACA ? that make it more expensive to provide coverage to employees and fix them so we can be competitive.

- <http://www.shopfloor.org/>



As We See It

(Continued from Page 24)

as creating a "hard number" for the maximum percentage of wood fiber that can be sourced from untrained loggers by SFI program participating mills - also known as the deminimus volume.

If you are a member of a logging trade association, whether it be national, regional, or state, I thank you for your support. If not, I encourage you to do so as they are your voice for issues that impact your business. By "supporting those that support you" we will make a difference.

Wishing everyone a Blessed Holiday Season.

Brian Nelson is the current President of the American Loggers Council and he and his brother David and father Marvin own and operate Marvin Nelson Forest Products, Inc. based out of Cornell, Michigan.



The American Loggers Council is a non-profit 501(c) (6) corporation representing professional timber harvesters in 30 states across the US. For more information, visit their website at www.americanloggers.org or contact their office at 409-625-0206.

2014 OREGON LOGGING CONFERENCE REGISTRATION APPLICATION

P.O. Box 10669 · Eugene, OR 97440 · Tel 541-686-9191 · Fax 855-866-0572

FEBRUARY 20, 21, and 22, 2014 – LANE EVENTS CENTER, EUGENE, OREGON

COMPANY _____

ADDRESS _____

TELEPHONE _____ FAX _____ CELL _____

CITY _____ STATE _____ ZIP _____ COUNTRY _____

PLEASE SEND INFORMATION TO MY EMAIL _____ ☐ I WOULD LIKE TO RECEIVE NEWSLETTER

Please List Names Of Individuals Attending Conference: (attach sheet for additional names)

Please indicate the industry that best describes your company. Logging () Trucking () Forest Prod. Mfg. () Equipment Dealer () Education () Press () Equipment Mfg. () ForestProd.Sales () Association () Finance () Road Contractor () Government () Forester () Other _____

PLEASE COMPLETE INFORMATION BELOW	*Full Price		Total
Registration - Fee includes Thurs. & Fri. breakfast tickets	\$95x		= \$
Spouse Registration - Fee includes Thurs. & Fri. breakfast tickets (Spouse must pay registration to qualify for Professional Logger Credits)	\$45x		= \$
Voluntary Contribution to Forestry Education Scholarship Program (Donations to the OLC will go directly to the OLC Foundation or you may donate directly to the OLC Foundation a 501(c)(3) tax deductible).			= \$
WEDNESDAY, FEBRUARY 19, 2014 TICKET EVENTS			
OWIT Auction And Dinner, Eugene Hilton, Playwrights Hall. - Call Diann Washburn 503-831-1593 - Wednesday, Feb. 20 th , Talk About Trees Auction & Dinner Playwrights' Hall, Eugene Hilton ~Oregon Women In Timber			
FRIDAY, FEBRUARY 20, 2014 TICKET EVENTS			
LADIES' EVENT ~ 11 th DESSERTS FOR DREAMS ~ EUGENE HILTON	\$30x		= \$
All proceeds from ticket sales will benefit Sunshine Industries Unlimited.. Enjoy A Light Lunch of Assorted Salads, Decadent Desserts and Champagne. Doors Open at 12:30p.m. Main Level of the Eugene Hilton			
NEW! - FRIDAY, EVENING CELEBRATION PARTY TICKETS	\$40x		= \$
Join the Fun at the Party as we celebrate the OLC's 76 th on Friday, February 20 th at the Hors d'oeuvre - Cocktail Party. Hosted Beer & Wine tasting, Heavy Hors d'oeuvres and Dancing to Bump In The Road. Doors Open at 7pm until Midnight in the Playwrights Hall at the Eugene Hilton			
ADDITIONAL BREAKFAST TICKETS – WHEELER PAVILION			
Thursday February 20, 2014 Breakfast Ticket – 7:30am-8:30am	\$20x		= \$
Friday, February 21, 2014 Breakfast Ticket – 7:00am – 8:00am	\$20x		= \$

NO REFUND AFTER DECEMBER 31, 2013	TOTAL DUE US FUNDS	\$
-----------------------------------	-----------------------	----

I authorize the Oregon Logging Conference to charge the total amount due to my credit card.

Credit Card Number _____ V-code _____ Exp Date _____ Visa () MasterCard ()

Complete Mailing address and Name of Card Holder _____

City _____ St/Prov _____ Postal Code _____ Signature _____

Pendley

(Continued from Page 23)

Oil Conservation Division; they have complete "jurisdiction, authority and control" over the development of oil or gas. The Division regulates these activities to protect fresh water, public health, safety and the environment and issues rules for "safety procedures for drilling and production of oil and gas wells."

The battle in Mora County is not about protecting people, land, or water; that is obvious from the ordinance's narrow, oil patch, focus. Instead it is over the primacy of the Constitution and the rule of law or whether America devolves into Chicken-Little Mob Rule.



Mr. Pendley, a Wyoming attorney, is President and Chief Legal Officer of Mountain States Legal Foundation and a regular columnist in Loggers World.

COMING EVENTS

JANUARY

14-16


ANNUAL MEETING ASSOCIATED CALIFORNIA LOGGERS

 PEPPERMILL RESORT
RENO, NEVADA

FOR INFORMATION CALL: (916) 441-7940

16-18


ANNUAL MEETING ASSOCIATED OREGON LOGGERS

 VALLEY RIVER INN
EUGENE, OREGON

FOR INFORMATION CALL: (503) 364-1330

FEBRUARY

1


WASHINGTON LOGGING SAFETY CONFERENCE

 GREAT WOLF LODGE
GRAND MOUND, WASHINGTON
FOR INFORMATION CALL: (800) 422-0074

6-8


2014 SIERRA CASCADE FOREST PRODUCTS & CONSTRUCTION EQUIPMENT EXPO

 SHASTA DISTRICT FAIRGROUNDS
ANDERSON, CALIFORNIA
FOR INFORMATION : (530) 222-1290

20-22


2014 OREGON LOGGING CONFERENCE

 LANE COUNTY CONVENTION CENTER
AND FAIRGROUNDS
EUGENE, OREGON

FOR INFORMATION CALL: (800) 595-9191

SEND EVENT NOTICES TO: Publisher, Loggers World Magazine, 4206 Jackson Hwy., Chehalis, WA 98532-8425. Please include your event's symbol. Items used at discretion of the publisher. **Deadline** for February 2014 issue: JANUARY 15th.

Advertiser's Index

ACME MANUFACTURING10	NORTHWEST FOREST PRODUCTS INC24
ADVANCED HYDRAULIC AND IND. SUPPLY14	OBENAUF'S.....20
AGGREGATES WEST.....21	OLIVER HAMMER CLOTHES SHOP5
CASCADE TRADER.....4, 5	OREGON LOGGING CONFERENCE26
CATERPILLAR3	OREGON TRACTOR TRADER....20
CC HEAVY EQUIPMENT INC. ...7	PACIFIC FIBRE PRODUCTS, INC.4
COWLITZ RIVER RIGGING.17	ROTHENBUHLER ENGINEERING6
CROWLEY EQUIPMENT INC. ...23	SCHAEFER ENTERPRISES19
DUKE'S EQUIPMENT18	SCHMUNK'S TIRE CENTER, INC.23
DUNLAP ENTERPRISES.....18	SHOW & SELL25
EAGLE CARRIAGE & MACHINE INC.12	SOUTHWEST FOREST PRODUCTS, INC.7
FRALEY TRACTOR, INC13	TRIAD MACHINERY, INC19
FULL CIRCLE FINANCE.....6	TRIPLE W EQUIPMENT21
HEAVY DUTY TRANSAXLE INC .8	WARATAH FORESTRY ATTACHMENTS9
HIGH CASCADES AGENCY.....14	WHITE MOUNTAIN CHAIN12
IRONMART17	ZENDER EQUIPMENT15
KOLLER NORTH AMERICA.....16	
LOGGERS WORLD IRONMART 22	
MADSEN'S SHOP & SUPPLY, INC.8	
MPI EQUIPMENT11	

**FOR
ADDITIONAL
ADVERTISER
INFORMATION**

**Use this
Reader's
Inquiry
Card**



LOGGERS WORLD • JANUARY 2014 ISSUE
INQUIRIES MUST BE MAILED NO LATER THAN: FEBRUARY 28, 2014

READERSHIP INQUIRY CARD

This Readership Inquiry Card is provided for easy access to more data on the products and services January 2014 issue of **LOGGERS WORLD**. Circle matching numbers on card, complete all blanks, put in an envelope, stamp and mail. **NOTE:** Incomplete and illegible inquiries will not be processed. Data will come directly from manufacturer.

10	20	30	40	50	60	70	80	90	100	110	120	130	140	150	160	170	180	190
11	21	31	41	51	61	71	81	91	101	111	121	131	141	151	161	171	181	191
12	22	32	42	52	62	72	82	92	102	112	122	132	142	152	162	172	182	192
13	23	33	43	53	63	73	83	93	103	113	123	133	143	153	163	173	183	193
14	24	34	44	54	64	74	84	94	104	114	124	134	144	154	164	174	184	194
15	25	35	45	55	65	75	85	95	105	115	125	135	145	155	165	175	185	195
16	26	36	46	56	66	76	86	96	106	116	126	136	146	156	166	176	186	196
17	27	37	47	57	67	77	87	97	107	117	127	137	147	157	167	177	187	197
18	28	38	48	58	68	78	88	98	108	118	128	138	148	158	168	178	188	198
19	29	39	49	59	69	79	89	99	109	119	129	139	149	159	169	179	189	199

Name (Please leave one space between each word. Please print or type)

Name of Firm or Company

Address

City/State

Zip

Phone (Include area code)

**Check the category best
describing your company's
business:**

- Logging Operator
- Timber Cutting Contractor
- Mill Owner
- Log Trucker: 4a. Operator/Owner
4b. I own _____ Trucks
- Road Builder
- Other (Specify):

**What best describes your
primary job?**

- Owner/Operator
- Foreman
- Supervisor
- Jobber
- Other (please specify):

**My purchasing budget this
year is:**

- \$0-\$50,000
- \$50,000-\$100,000
- \$100,000-\$200,000
- Over \$200,000

**How many people will read
your magazine?**

- 1-2 People
- 3-4 People
- 5-6 People
- More than 6
People

**How many people does your
company presently employ:**

- 0-2 People
- 2-5 People
- 5-20 People
- More than 20

Mail To: LOGGERS WORLD, 4206 Jackson Hwy., Chehalis, WA 98532-8425