

LOG TRUCKER

VOLUME 42 NUMBER 3

To Advertise Call (800) 462-8283

MARCH 2015

P&D LOGGING
and Tree Service



**REDWOOD REGION LOGGING
CONFERENCE**

REDWOOD ACRES FAIRGROUNDS
EUREKA, CALIFORNIA

March 19-21

FEATURED IN THIS MONTH'S ISSUE

P'n'D LOGGING AND TREE SERVICE

Based out of **Maple Valley, Wash.** Chris Powell Sr. and his son Chris Powell Jr. operate a large operation with **over 50 pieces of equipment**, two sites for firewood, log storage and roughly **15 employees**. They do small logging jobs and have **two cranes** they use for tree removal in residential areas. Their cranes allow them to work faster and cleaner.

P'n'D Logging and Tree Service

MAPLE VALLEY WASHINGTON

Maple Valley, Wash. is a town of roughly **25,000 people** in King County, Wash. just outside of Seattle. The area was settled in 1879 and has a long history of **coal, lumber milling and railroads**. Coal was brought in from Black Diamond, Wash. and nearby **Cedar Mountain** and mining occurred as late as 1947. **The city was incorporated in 1997** and hosts the annual **Maple Valley Days Parade** in June of each year. It's been named one of the **top ten family cities in the USA**. It's population grew from 1,211 in 1990 to 14,209 in 2000.



CLIMBING UP, P'n'D's Ryan Navaree takes off limbs on a tree to be felled on an Issaquah Wash. property.

See "Anything You Need" starting on Page 5

Like what you see in Log Trucker Magazine?

4 RIGGING SHACK PAGE 4 IN LOGGERS WORLD
— by *Finley Hays*

4 ANYTHING YOU NEED
P'n'D LOGGING AND TREE SERVICE. • MAPLE VALLEY, WASH.
— by *Brandon Hansen*

18 TRUCKER NEWS

19 ADVERTISERS INDEX

Buy a Subscription so you don't miss a single issue:
www.loggersworld.com

LOG TRUCKER

Founded in 1975 by *Finley Hays*
Published by
LOGGERS WORLD LLC
Phone **(360) 262-3376**

PUBLISHERSKevin & Nancy Core
EDITOR EMERITUSFinley Hays
EDITOR/WRITERBrandon Hansen
ADVERTISINGKevin Core
OFFICE MANAGERNancy Core

POSTMASTER: Send address changes to:
LOGGERS WORLD LLC,
P. O. Box 1631, Chehalis, WA 98532-8425
E-Mail: **logworld@aol.com**

SUBSCRIPTION RATE (In U.S.A.): \$25.00 per year;
Two years for \$50.00

LOGGERS WORLD LLC cannot and does not assume responsibility for the contents of any advertising in Loggers World. The representations made by advertising is the responsibility of the advertiser and not Loggers World. Loggers World does not knowingly accept advertising that is false or misleading. The limit of Loggers World liability in case of a mistake made in advertising copy by Loggers World will be the charge of the actual space containing the error or less for that particular advertisement

Helping You for What's Next



General Trailer Parts MARCH PARTS SPECIALS



2000 2" Rad. Clearance LED Red	\$4.65 Ea
2000 2" Rad. Clearance LED Amber	\$4.65 Ea
2000 2" LED Beehive Red	\$4.75 Ea
2000 2" LED Beehive Amber	\$4.75 Ea
4000 4" Rad Red LED S/T/T	\$11.85 Ea
4000 4" Rad Amber LED S/T/T	\$12.45 Ea
4000 LED Super 44 S/T/T 6 Diode	\$15.40 Ea
4000 5" Multi Purpose Lamp	\$8.05 Ea

APITONG

1-125-7-12 1-1/8"X7"X12" Board Apitong	\$39.50 Ea
1-125-7-12 1-1/8"X7"X13" Board Apitong	\$42.75 Ea
1-125-7-12 1-1/8"X7"X15" Board Apitong	\$51.50 Ea
1-125-7-12 1-1/8"X7"X16" Board Apitong	\$54.95 Ea
1-125-7-12 1-1/8"X7"X17" Board Apitong	\$58.50 Ea
1-125-7-12 1-1/8"X7"X18" Board Apitong	\$65.50 Ea



SPRAY GUARD

5014007-1 8' Flexible 14" Filament Under-Mount	\$45.75 Ea
5014007-2 6' Flexible 7" Filament Side-Mount	\$25.50 Ea
5014007-3 6' Flexible 7" Filament Under-Mount	\$25.50 Ea
5014007-4 6' Flexible 11" Filament Side-Mount	\$29.75 Ea
5014007-5 6' Flexible 11" Filament Under-Mount	\$29.75 Ea
5000-0048-1 Under Mount 4' Alum. Bkt.	\$6.25 Ea
5000-0048-3 Side Mount 4' Alum. Bkt.	\$6.29 Ea
5011-1049-2 4' Runner 11" Filament	\$18.25 Ea



5014007-1 Amber Foxfire W/magnets	\$42.95 Ea
5014007-2 Red Foxfire W/magnets	\$42.95 Ea
5014007-3 18"x84" Long Load Sign	\$24.95 Ea
5014007-4 Vinyl Oversize 18 X 84"	\$19.95 Ea
5014007-5 18x84 Oversize Reflective	\$89.75 Ea
5014007-6 Magnetic Rag Holder	\$7.99 Ea



0101 Hitch Equalizer Poly Bushing	\$30.50 Ea
0001 Premier(348A) Bushings	\$23.50 Ea
0001 Columbia Air Ride Bushings	\$80.50 Ea
0002 Trans-pro Equalizer Bushings	\$36.50 Ea
36 515 Peerless Trailing Arm Poly Bushing	\$56.50 Ea
36 521 Peerless Pivot Poly Bushing	\$32.25 Ea
36 510 Peerless Trunnion Bushing	\$49.95 Ea

NOTE: NOT ALL ITEMS ARE IN STOCK AT ALL LOCATIONS. HOWEVER, WE WILL BE HAPPY TO TRANSFER INVENTORY TO THE BRANCH NEAREST YOU.

Visit generaltrailerparts.com

New 2015
Peerless
Chip Vans,
Live Floor and
Drop Frame
In Stock

New Peerless 48-ft
3-Axle Live Floor



New Peerless 53-ft
4-Axle Possum Belly



Call for
a Quote
Today!

Call Jerry Blair in Oregon City
1-800-452-9683

Used Peerless 57-ton
Lowboy \$34,000



3-Axle Air Ride Suspension,
Long Gooseneck,
Non-Ground Bearing
Clean Trailer - Ready for Work!

You never know what's next in business, but you can count on the GENERAL to be there with rugged equipment to meet your needs, like this used Peerless 57-ton Lowboy. Give us a call at 1-800-452-9532 to make it a part of your workforce.

★ GENERAL TRAILER ★

Building the Best...Repairing the Rest.

In Stock - Ranco 16- and
15-ft Anvil Rock Bodies



Call for a Quote.

We're dedicated to making sure we're there for what's next in your business, which is why we stock equipment like these new Ranco 16- and 15-ft Anvil Rock Bodies. Call today.

New Peerless 52-ft
Live Floor Trailer



Spread Axles
on Air Ride, Roll-Over Tarp,
60" King Pin Setting, California Legal
Call Jerry Blair in Oregon City
for a Quote.

Being prepared for whatever your customers demand is the mark of a great company and why you should consider the 52 feet of hauling power you'll get with this new California legal, Peerless Live Floor Trailer. Call Jerry Blair at 1-800-452-9683 today.

New Ranco 34-ft End Dump



Ready to work, Call for a Quote.

When clients are counting on you to deliver as many loads as possible, you need to be ready for what's next with equipment like this new Ranco 34-ft End Dump.

New GENERAL
Air Bag Boosters IN STOCK



22,000 lb Rated
Call for a Quote.

To succeed in business, you always need to be ready for what's next and with durable equipment, like these new GENERAL Air Bag Boosters you can count on being prepared. You'll find this and more at the GENERAL.

GENERAL Hydraulic Boosters



Available in single, tandem or three
axle trailers, call for a quote.

Uncertainty about equipment isn't a worry when you have the best equipment on the road, like these GENERAL Hydraulic Boosters. You can count on the GENERAL having whatever you'll need next in your business.

General Trailer in Oregon City
now installs "Wet Kits" and
builds hydraulic hoses.

Call the General's Headquarters.

1-800-452-9532

SPRINGFIELD

1420 South B Street
Springfield, OR 97477
Phone: (541) 746-8218
1 (800) 452-9532
Fax: (541) 726-4707

MILTON

7200 Pacific Highway East
Milton, WA 98354
Phone: (253) 926-8903
1 (800) 562-8380
Fax: (253) 926-8908

OREGON CITY

21195 S. Highway 99 E.
Oregon City, OR 97045
Phone: (503) 263-2702
1 (800) 452-9683
Fax: (503) 266-9498

REDDING

5875 Eastside Road
Redding, CA 96001
Phone: (530) 246-3813
1 (800) 475-1057
Fax: (530) 246-3823



LOADING on a customer's property in Issaquah, Wash. Greg Whitlock uses the Serco self-loader on the company's 2006 Kenworth T-800 with Alpine trailer.

ANYTHING YOU NEED

Started by Cutter Chris Powell Sr. in 1977, P'n'D is Now Making Inroads Into The Seattle Market With Their Crane Tree Service

By Brandon Hansen

When it comes to taking down trees weighing tens of thousands of pounds by your house, you're probably going to

want the guy with the chainsaw to know what he's doing.

And when it comes to P'n'D Logging and Tree Service, you're not going to find more experience — and more equipment — than the Maple Valley, Wash. business. Started by cutter Chris Powell in 1977, he's now in business with his son Chris Jr. and the two bring their

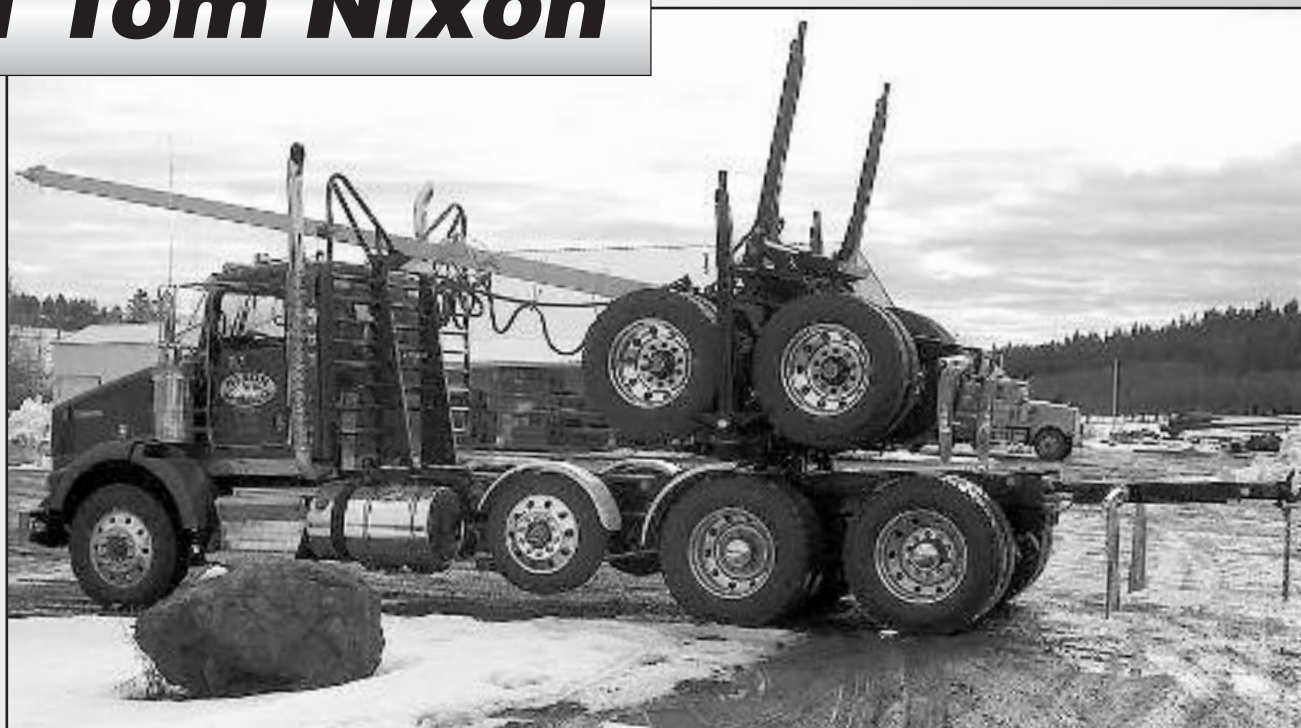
(Continued on Page 8)
See "PND"

Thank you Tom Nixon

of Nixon Enterprises
for the purchase of a

**2015
ALPINE
Log Trailer**

with all the rigging



ALPINE
INDUSTRIAL, LLC
LOG TRAILERS



Happy St. Patrick's Day!
From your friends at Alpine!



CALL (208) 877-1714

2810 Big Bear Ridge Road • P.O. Box 341, Deary, ID 83823
Fax: 208-877-1198 • EMAIL: alpineindustrial@moscow.com



TAKING HIS SAW to the large tree trunk, Chris Powell Jr. gets down to business on the lawn of a Puget Sound-area customer. Powell has 17 years of cutter experience he learned from his dad, Chris Powell, Sr.



Left Coast Truck and Equipment Parts, Inc.

541-573-1799

LeftCoastTruckParts@gmail.com



**2000 KW 900
PARTING**



**Parting Kenworth
T600s, Curved and
Flat Glass**



**PACIFIC Hydraulic
Press Brake, 75
Ton, 12 Ft. \$8,500.**



**CATERPILLAR
D353 Gen-Set,
250kw,
\$8,995 OBO**



**Parting 1980
Western Star,
Silver 92,
2 Speed Rears**



**Parting
Freightliner COE,
N14, Super 10**



**Quality Take Off
Hoods**



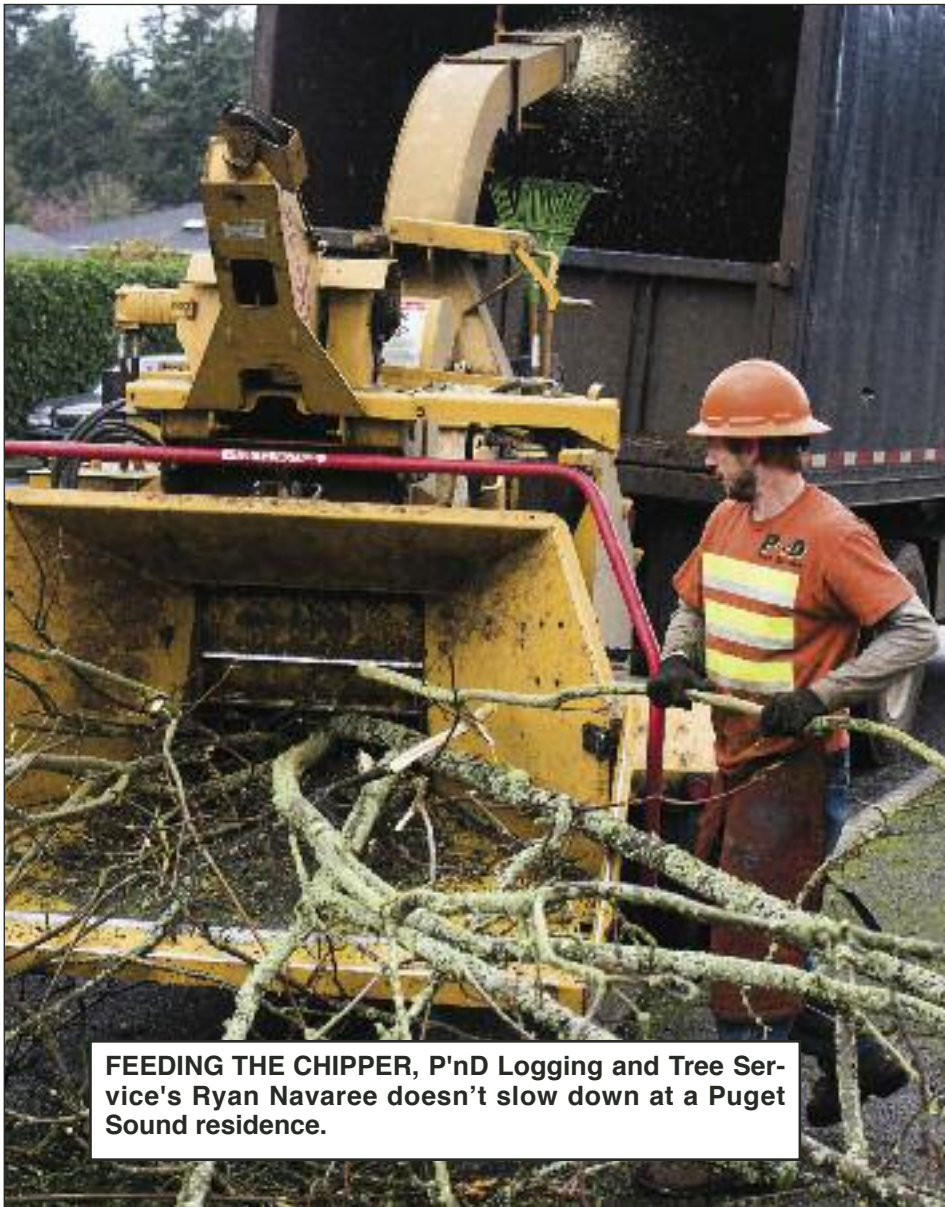
**Parting Self
Loader, Selection
of KW-A Model
Parts Trucks**



**1993 F600,
Cummins, Allison
Auto, 208K Miles
\$8,995 OBO**



**Parting Multiple
Kenworth T600 &
T800 Trucks**



FEEDING THE CHIPPER, P'nD Logging and Tree Service's Ryan Navaree doesn't slow down at a Puget Sound residence.



P'n'D Logging and Tree Service's 30-ton Manitex crane with a 100-foot boom gets to work taking apart an old tree in front of a Puget Sound-area home.

THE ONE THAT WORKS!



Check out our new third axle kit that is lightweight and easy to change over.

Haul More Logs with every trip. This third axle adds only an estimated 1,700 lbs to your existing weight. Different configurations available.

CALL FOR MORE INFORMATION



A-1 Truck Repair LLC

550 COLUMBIA STREET • WOODLAND, WA.

(360) 225-6327

More Information available at www.a-1truckrepairllc.com

 <p>SCHOTT PARTS & ACCESSORIES</p> <p>503-463-0500 <i>Formerly ESLEY</i></p> <p>CALL FOR OUR CATALOG!</p>	<p>I-5 Exit 263 8983 TRUCKMAN WAY SALEM, OR 97303</p> <p>SHOWROOM HOURS Monday-Friday: 9:00-5:30</p> <p>WWW.TRUCKCHROME.COM</p>
<p>HOWES LUBRICATOR PRODUCTS <small>Quality Products To The Trade - Since 1929</small></p> <p>• Anti-Gel • Adds Lubricity • Increase MPG</p> <p>Meaner Power Kleaner</p> <p>GUARANTEED TO INCREASE MILEAGE 5% - CALL FOR MORE INFORMATION -</p>	<p>DYNAPLEX PRODUCTS <small>Diesel Exhaust Technologies</small></p> <p>Monster Stacks Chrome Mufflers, Elbows and MORE!</p>
<p>\$36.00 each</p> <p>6 Diode 1350 Lumen L.E.D. Work Light</p>	<p>NOW STOCKING... Howe's Fuel Enhancer</p> <p>CHROME BUMPERS We Have <i>Square & Tapered</i> Bumpers, 12", 16", 18", 20" & 22" SPECIAL CUT OUTS - No Problem!</p> <p>16" Tapered</p>
<p><i>Your Home for Chrome!</i> • BUMPERS • STACKS • LED LIGHTS • CHROME • FLAPS • FENDERS</p>	

CHRIS POWELL JR. uses P'n'D's bucket truck to limb trees while they still stand and make it easier to get to larger limbs when the crane is brought up.



THE PACE IS NEVER SLOW FOR P'N'D as Dylan Sergi cuts up firewood. The crew can be done with a multiple-tree job in just a few hours and have the area cleaned up for the home owner.



SERCO

TRUCK MOUNT TRAILER MOUNT
LOG AND PULP LOADERS

2009 KENWORTH W900L -- SERCO 160 LOADER



ONE OWNER TRUCK IN SUPERB CONDITION

- ISX Cummins
- 550 HP
- Jake
- 18 Speed
- 46,000# Rears
- Full Lockers
- LOADED!

- SERCO INSTALLED NEW ON TRUCK IN 2009
- 25' Boom
- 46" Continuous Rotating Grapple
- 1999 Alpine Trailer
- Hop On Hinge & Triple Reach
- Extends to 65'



L&M Truck Sales - Spokane, WA 99202 - 800-509-4175 - www.lmtrucks.com

PLEASE CALL FOR MORE INFORMATION AND PRICING



THE SERCO SELF-LOADER drags logs closer to be hauled away on the 2006 Kenworth T-800 the loader is mounted on.

PND

(Continued from Page 4)

woods experience to the busy streets of the Seattle and Puget Sound area.

Chris Sr. started out in the woods when he was a teenager and got a chainsaw for his high school graduation.

"Not many people get corked boots and a saw for graduation but I was the happiest kid in the world," he said. "That's all I've ever known is chopping trees."

Chris. Sr. cut for 25 years and and in 1977 became an independent cutter with his dad. He then passed his knowledge and his trade down to his own son, Chris. Jr.

Chris was just a teenager when he hit the steep hills around Randle and Packwood, Wash. in the shadow of Mt. Rainier.

"My dad and I have been real close," Chris Jr. said. "I remem-

(Continued on Page 12)
See "PND"

FOR SALE



FOR SALE 4 Log Trucks,
(3) 2005, (1) 2006, T-800 KW, C15
CATS, matching Whit-Log gear.....
\$71,000-73,000

503-791-2273

ST. JOHNS

THE POWERTRAIN PEOPLE



TRUCK & EQUIPMENT



REBUILT TRANSMISSIONS/ REAR ENDS

(ALL SOLD EXCHANGE)



FREE FREIGHT!

For a Limited Time St. Johns will pay the Freight to you on any REBUILT TRANSMISSION or REAR END sold in Washington, Oregon, or Idaho

DIFFERENTIALS - ROCKWELL

PRICES VARY BY RATIO, ALL PRICES STARTING AS LOW AS...

RD20-145	\$2,075.00
RR20-145	1,200.00
RDL20-145	2,550.00
RRL20-145	1,725.00
RD23-160	3,100.00
RR23-160	1,825.00
RDL23-160	3,650.00
RRL23-160	2,400.00
SQHD	1,950.00
SQHR	1,425.00
QD100	1,670.00
QR100	1,150.00
SSHD	2,225.00
SSHR	1,400.00

EATON:

DT461P	\$4,625.00
RT461	3,050.00
DD461P	4,875.00
RD461	2,825.00
DS461P	3,375.00
RS461	1,825.00
DS402	1,750.00
RS402	1,150.00
DS404	1,650.00
RS404	1,125.00
DT402	2,825.00
RT402	1,950.00
DD404	2,825.00
RD404	2,025.00
DSH40	2,250.00
RSH40	1,550.00
DDH40	3,550.00
RDH40	2,170.00

Many Other Transmissions And Differentials Available... Call Us First!
Custom Repair For Your Unit
CALL US FIRST!

CUMMINS® MANIFOLDS

3801322 855 LARGE PORT	\$325.00
3801915 855 SMALL PORT	295.00

FLYWHEEL HOUSINGS

CUMMINS® FW HOUSINGS	CAT® FW HOUSINGS
3680063 ISX	\$795.00
3036005 855/N14	399.00
	1694153 C15
	1795.00

REPLACEMENT FLYWHEELS



CUMMINS FLYWHEELS	
3071535 855/N14	\$435.00
3016495 855	375.00
CAT FLYWHEELS	
9L6392 3208	\$425.00
9Y9313 3208	399.00
4P4797 3406	465.00
DETROIT FLYWHEELS	
23509709 SERIES60	\$450.00

"Our Fuller Transmissions are rebuilt using Genuine OEM Fuller parts!"

FULLER

RT/RTO6613	\$3050.00
RT8609A	3125.00
RTO12513	2175.00
RTO12515	2275.00
RTX12609B	2300.00
RTX14609B	2375.00
RTO14613	2600.00
RTLO14613BP	3300.00
RTX14708LL	2575.00
RTX14710B/C	2675.00
RTX14710B/CP	2875.00
RT14715	3175.00
RTO15613P	2975.00
RTX15710B/CP	2875.00
RTO/RTX15715P	3275.00
RTX16710B/CP	2875.00
RTAO16710B/C	3975.00
FRO16210B/C	3370.00
RTLO16610BP	2875.00
RTLO16618A	3300.00
RTLO14713A	3300.00
RTLO16713A	3550.00
RTLO16718B	3900.00
RTLO16913A	3500.00
RTLO16918B	4100.00
RTLO18718B	4100.00
RTLO18913A	3900.00
RTLO18918B	4350.00
RTLO20913A	4625.00
RTLO20918B	4825.00
RTLO22918B	6725.00

ROCKWELL

RMX10-145A	\$3250.00
RMX10-165A/C	3250.00
MO16G10C	3895.00

POWERSTEERING PUMPS / GEARS

PUMPS

- Eaton
- Parker
- Vicker
- Saginaw
- ZF
- TRW

GEARS

- Ross/TRW
- Saginaw
- Bendix
- Gemmer
- Sheppard



Same Day Shipping!

Check out ALL our TRUCKS at...
WWW.STJOHNSTRUCK.COM



CUT OFFS:

RD20145 & DS404 various ratios
\$2500

Take out Differentials;

Limited supply, various ratios,
Sold exchange

DS404	\$850.00
RS404	550.00
RD20 145	875.00
RR20 145	575.00

Fuller 18 speeds



Built with

100% NEW OEM gearing

RTLO18918B ...\$6895.00 exchange
RTLO20918B7295.00 exchange
RTLO22918B7695.00 exchange

Call for outright pricing
and exchange details

**FULL SERVICE TRUCK
& TRAILER REPAIR
Call St. Johns First!**

8435 N. CRAWFORD STREET • PORTLAND, OREGON 97203

NATIONWIDE TOLL FREE:
(800) 222-8435

PORTLAND:
(503) 286-8336

FAX:
(503) 283-3423

HEAVIER than most pieces of firewood, P'n'D cranes off a large part of a branch base that was connected to the main trunk of a Puget Sound residential area tree.



SWP
Southwest Products

WE BUILD CUSTOM SERVICE VEHICLES
FUEL/LINE / VAC / MECHANIC / CRANE TRUCKS

Quality Trucks That Work As Hard As You Do

Our premium line of heavy duty mechanic truck bodies are designed to withstand the demands of your most severe job sites.

Need A Truck Now?

With the largest rolling inventory and fastest turnaround on stock orders, SWP can get you a truck NOW.



360.558.3939

SEE OUR INVENTORY ONLINE // WWW.SOUTHWESTPRODUCTS.COM





PICKING UP A LOAD in the Issaquah area, P'n'D's 2006 Kenworth T-800 with Serco self-loader and Alpine log trailer is operated by Greg Whitlock. The Maple Valley business has three self-loaders and a mule train. They will still take on small logging jobs in the area, but the bread and butter of P'n'D has turned into the tree service. "We've just slowly been getting more and more equipment," Chris Powell Jr. said. "The tree service business has its ups and downs but we have so many different avenues to do things that this has been our best year yet."

IT'S ABOUT PEOPLE

In every business it comes down to **you** –

What you need now will affect how your business grows

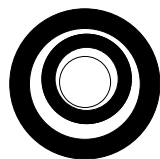
And that often means getting financial assistance.

With over 30 years of lending to the forest products industry, Mike Lobb can offer solutions for all of your equipment needs. His experience makes the process simple and time saving.

- ✓ New / Used/ RPO
- ✓ Seasonal & Annual Payments
- ✓ Dealer or Private Party
- ✓ Start ups

RECENT FUNDINGS

2004 Timbco T-445 Feller Buncher in California
1973 West Coast Yarder in Oregon
2014 Peterbilt Log truck with trailer in Idaho



Business Equipment Loans

MIKE LOBB

503-784-3935 (Cell)

email: mlobb@bizequiploans.com

971-204-0038 (Office)

PMB #407, 3 Monroe Parkway, Lake Oswego, OR 97035

RADIATOR

SUPPLY HOUSE, INC.

1-877-615-3002

www.RadiatorSupplyHouse.com

John Deere Charge
Air Coolers



**Caterpillar Folded/
Modular Core
Conversion**



**Samsung 210
Oil Cooler**



Big Bud PTO Ag Core

**Tier 4 Custom
Cooling
Packages
Radiator/Charge
Air Cooler/Oil
Cooler**



**Kobelco 250
Oil Cooler**



**All Metal
Replacements**

**OVER
10,000
Units In
Stock**

- Gen - Sets
- Windmills
- Stationary Pumps
- Trucks
- Tractors
- Heavy Equipment

- Specialty Harvest Equipment

**WHAT
CAN WE
BUILD
FOR YOU?**



NATIONWIDE SHIPPING!! • WHOLESALE PRICING!!

CAT - MADILL - DEERE - JCB - CASE - PETE - KW



SAW DUST ISN'T A SHORTAGE HERE, as P'n'D's Brian Kilmer cuts a large branch off a Puget Sound area resident's tree while using the bucket truck.

United Gear

"Your Quality Gear Shop"

2480 Kotobuki Way
Vancouver, WA 98660

360-518-6440

ALL
TRANSMISSIONS
are tested on our
In-House Dyno



- ✓ NO LEAKS
- ✓ NO NOISES
- ✓ TESTED SHIFTABLEITY

- United Gear will guarantee on a time and material basis your costs will not exceed your exchange price.
- In most cases you receive a completely rebuilt, fully warranted, one year unlimited miles unit for less than the exchange price.
- With over 600 trucks and 10 shops of our own, we know your needs
- Our master gear tech, Dean Clark, makes sure every gear box is done right and every customer is treated fairly

Only OEM parts are used
All cases are machined to
factory specs
Exchanges, custom rebuilds,
repairs
R&R available

Exchange Prices - Transmissions

RTLO 16713A	\$3200
RTLO 16718B	\$3700
RTLO 18718	\$3750
RTLO 16913	\$3500
RTLO 18913	\$3600
RTLO 18918	\$4100
FRO 16210C	\$3100
FRO 16210IC	\$3150

Exchange Prices - Rearends

RD 20145	\$2100
RR 20145	\$1100
DS404	\$1500
RS404	\$1100
DSH40	\$2100
RSH40	\$1400
RDL20145	\$2300
RRL20145	\$1600

360-518-6440



KENWORTH NORTHWEST, INC.



**Special Thanks to Justin
(Justin Pitts Trucking Inc.)
for the purchase of his
2015 Kenworth W900B Long
Logger/Lowboy Quick Change**



**2015 Kenworth T880, ISX 550 HP, RTLO
18918B Trans, 46K Rears, Hendrickson
Haulmaxx 46K Suspension, 14.6K front
axle, 13.2K Lift Axle, Whit-Log Gear
P.O.R.**



First T880 Tractors in the Northwest,
Paccar MX500/1850, Fuller 18spd, X
Lockers, Chalmers, 13.5K Lift Axle,
Bridgestone M844F 385/65R22.5
18PR, Bridgestone M711 11R24.5
14PR Drives, BR R250ED
255/70R22.5 16PR LA, (1) 120 tank
with 11 gallon DEF, Vit Interior. ... **P.O.R.**

More Trucks on the Way!



**2015 T800 Loggers, some Paccar MX-13
500HP & some ISX Cummins powered,
Fuller 18spd transmission, 14.6K FA, 46K
RA, 3.91 gears, Hendrickson, Chalmers,
& Neway Suspensions, 2 fuel tanks (75 &
50 gal.) P.O.R.**

**(1) T800
Geared up &
On The Ground!
14 Dump Trucks Boxed
and Ready!
(5) Bare T800's On the Way!
(1) W900
On the Way!**



**2015 Model T880 with a SL505
Swaploader Hooklift, 264" WB, Paccar
MX13 500 Engine, 18-spd., Chalmers
Suspension P.O.R.**

**Aberdeen, WA 800-228-9332 • Full Parts, Service and Mobile Service
Bellingham, WA 888-733-9403 • Full Parts, Service and Mobile Service
Lakewood, WA 855-436-8800 • Full Parts, Service and Mobile Service
Marysville, WA 800-561-7753 • Full Parts, Service and Mobile Service
Sea-Tac, WA 800-562-0060 • Full Parts, Body Shop, Service & Mobile Service
Yakima, WA 800-831-4629 • Full Parts, Service and Mobile Service
www.kenworthnorthwest.com**

(Continued from Page 8)

ber waking up at 2:30 in the morning and going on with a crew. I got to be around that, I got to learn that. It seems like people were better timber cutters back then and being around that really helped me a lot."

After doing just strictly cutting for many years, the company added their tree service around 2000. Friends of Chris Sr. began to convince him that moving into residential tree work around the quickly growing Seattle area was the way to go.

"It felt like the logging business was getting worse and worse and my buddy just told me, what are you going to do for

your retirement?," he said.

At first, Chris Jr. said he was resistant to the idea, saying that he was a cutter and they belonged out in the woods. After the business took off and he got

"I couldn't fathom doing our jobs without the crane now. We could do it but I just wouldn't want to do it."

CHRIS POWELL JR.

used to it, Chris now enjoys it.

The company began using their own cranes since 2007. While other companies may hire a crane for specific jobs, P'n'D prides itself in its ability to bring their crane to any site they deem necessary. They don't have to wait around for someone's crane or self-loader, they can get the job done when they need it done. The result has been increased efficiency and more business.

A busy job site for P'n'D can produce up to 4 or 5 log loads a day, and all the mess can be chipped up and hauled away.

"The crane makes it faster for us," Chris Jr. said. "It's a lot less work too and we can utilize the lumber value. We like to take logs. It also makes it a lot nicer on the customer's ground. There is a lot less debris when you can crane things."

The company has two 30-ton Manitex cranes — one serving as the backup — and 15 employees. The company also has a fleet of support trucks and over 50 pieces of equipment total.

"I couldn't fathom doing our jobs without the crane now," Chris Jr. said. "We could do it but I just wouldn't want to do it."

Along with their cranes, the company has two 75-foot bucket trucks, five chippers, four chipper trucks, four stump grinders, 3 self-loading log trucks, a

(Continued on Page 14)

COAST TRUCK CENTERS NEW AND USED TRUCKS & TRAILERS

A HERITAGE OF
POWER, STRENGTH
AND INCREDIBLE
VALUE



2015 WESTERN STAR 4900SB
NEW IN STOCK



NEW IN STOCK! Brand new 2015 Western Star 4900SB Chassis. Features 18 Speed, Detroit DD16 Engine, Dual Lockers, Hendrickson HMX460 Suspension and more ... **Contact us for details!**

Check out our complete inventory of New & Used Trucks & Trailers:
CoastTruckCenters.com

Or call us toll-free: 800-750-2777

Klamath Falls
541-882-7159

Medford
541-210-5035

Portland Metro
503-737-0110

West Sacramento
916-374-9550

Salinas
831-772-7100

ADVANCED HYDRAULIC & INDUSTRIAL SUPPLY



HYDRAULIC SOLUTIONS FOR CHALLENGING ENVIRONMENTS™

WATCH US @ <http://www.youtube.com/user/TaimiHydraulics>

The Swiwell Hydraulic Swivelling Couplings Designed to eliminate torsion on hydraulic hoses. The Swiwell TM in-line swivelling couplings do not use ball bearings, are more robust and will endure extreme operating conditions, providing a life expectancy of up to 10x that of an ordinary swivel.



**The Perfect Fix
for your
Self Loader or
Processing Head**

**SHOW
SPECIAL
5% OFF
ANY PURCHASE
WITH THIS AD,
Valid Thru
3-31-15**

Advanced Hydraulic Supply

4444 N.E. 148TH Avenue, Portland OR, 97230

1-877-887-1730

(503) 289-0354

FOR SALE

2003 KW Long Hood,
Cat C-15 6NZ 550, 18- speed, Eaton
DSP 40 P.S. 3.70S, AG 400
\$55,000
Part Trade for A. Model
1980 to 1982 steel frame
208-347-2341



**WEIGHING
ROUGHLY
10,000 pounds,**
a tree trunk is
lifted by P'nD's
crane onto a
Puget Sound
area home's
lawn to be cut
up into fire-
wood.



LINCOLN INDUSTRIAL CORPORATION, INC.

4130 TUMWATER TRUCK ROUTE • PORT ANGELES, WA.

1-800-492-6122

Installation Centers in:

- Tacoma, WA
- Longview, WA
- Sagle, ID
- Molalla, OR
- Shelton, WA
- Aberdeen, WA
- Woodland, WA

WE DO IT ALL! FOR A CURRENT QUOTE, CALL WAYNE • CELL # 360-461-3795 OR 1-888-212-0514



**3AX LL
7,400 lbs.**



**3 AX Short
Logger Pkg**



**2 AX Short Logger
Package**



**2 AX Short Log Trailer
& Cab Guard**



**2 AX LL Trailer
5,400 lbs.
& Truck Bunk**



LINCOLN
Truck Bodies & Trailers

Ampliroll
HOOKLIFTS

Rugby
HOISTS & BODIES

OUR 69TH YEAR. . . KEEP THINK-N-LINCOLN . . . 1946 - 2015

LIMBS THAT COULD HAVE CAUSED DAMAGE if blown down in a windstorm are cut into firewood — a valuable commodity in the western part of Washington — for the owner of a Puget Sound residence. P'n'D can take the firewood themselves as they sell cords upon cords of wood at their Maple Valley and Ravensdale locations.



PND's WEBSITE

Download a QR reader app on your smartphone and scan this to see P'n'D's website, or type www.panddtreeserve.com into your browser.



PND

(Continued from Page 12)

knuckle-boom loader, a dump truck, excavators and dozers. Basically if you have something that needs heavy equipment, P'n'D can probably do it.

P'n'D has carved a spot for themselves in the competitive Seattle market, able to come in, remove several trees and provide cleanup in just a few hours with

crews as small as three. They pride themselves on being fast, and many homeowners are sometimes shocked to see a job they figure would be done in a few days, done in a few hours.

"We get a lot more recommendations because of our efficiency and how clean it is for the homeowner," Chris Jr. said.

Needing to haul their logs off

(Continued on Page 15)

MILLER TRUCK SALVAGE L.L.C.

DIESEL TRUCKS & PARTS

15015 N. W. MILL RD. • PORTLAND, OR 97231

"Specializing in '70's thru 90's"

(503) 283-1797



1991 Autocar, 3406B 425, 18-spd., Rockwell rears **Parting Out**



1984 359 Pete, BC2 400, 13-spd., 44K rears **Parting Out**

2003 387 Pete, ISX Cummins, 13 spd, Eaton rears **Parting Out**



2000 379 Pete, C15 Cat, 18 spd Fuller, Eaton rears



1988 W Star, BC Cummins, 13 spd Fuller, Eaton on Neway **Parting Out**



2004 T800, ISX Cummins, Fuller trans, Eaton dbl lkr on AG 400 **Parting Out**



ENGINES / TRANSMISSIONS

Check With Us Before You Buy!

TRANSMISSIONS

• RT 6613	\$1,250
• RT 6610	\$1,250
• RTO 15613	\$2,000
• RTO 14715	\$1,500
• RTO 14613	\$1,500
• RTLO 16713A	\$2,600
• RTLO 18718B	\$2,750

ENGINES

• 3406B 425 h.p. Inspected.....	\$5,000
(Uninspected)	
• 8.3 Cummins, mech. \$3500 exchange	
• 5.9 Cummins, runs good	\$2,750
• Cummins BC 1-4 series	3000-4500 exchange
• E-7 300 W/Jakes, good runner	\$4000
• 675 285 hp., low miles	\$3500
• 3406E 5EK- 2WS .4000-6000 exchange	
• DDEC4 450hp., runs good	\$5000

EXCHANGE REQUIRED ON SOME EQUIPMENT - CALL FOR SPECIFIC UNITS

We Are The Best Darn Diesel Shop In Oregon!

COME IN AND SEE WHY!

And We Absolutely, Positively Have The Best Remanufactured Engines Available Anywhere!
Huge Inventory • Expert Technical Assistance

Up to 100,000 mile warranty
when we install
depending on application

ALL ENGINES & CYLINDER HEADS EXCHANGE MUST BE RE-BUILDABLE CORE

REBUILT DIESEL CYLINDER HEADS

GM	
6.2-6.5	\$395 ea.
6.6 Duramax	\$775 ea.
FORD - IH - NAVISTAR	
6.0 Power Stroke	\$775 ea.
7.3 Power Stroke	\$425 ea.
6.9 - 7.3	\$395 ea.
CUMMINS	
4BT - 3.9	\$695 ea.
6BT - 5.9, 12V	\$895 ea.
6BT - 5.9, 24V	\$1095 ea.
6BT - 5.9, 24V C/R	\$1095 ea.
6CT - 8.3, 12V	\$1050 ea.
ISUZU	
4BD1 or BD2	\$995 ea.

DIESEL ENGINES

CAT		FORD	
3204	\$5350	6.0 P/S	\$4795
3208	\$5850	6.4 P/S	\$5550
3304	\$5650	6.9/7.3	\$3695
3306	\$5995	7.3 P/S	\$3695
NAVISTAR		GM	
DT 466	\$4985	6.2-6.5T	\$3395
CUMMINS		ISUZU	
3.9-4BT	\$2995	4BD2T	\$5695
5.9 12V	\$3395		
5.9 24V	\$3695		
5.9 24V, CR, 03 & Up	\$4950		
6.7 CR	\$6195		
8.3 C	\$5695		

**OVER 100
GAS ENGINES
AVAILABLE**

PROFESSIONAL REMOVAL & INSTALLATION AVAILABLE

**BEST PRICES ON
INFRAME OVERHAULS**

CALL FOR APPLICATIONS NOT SHOWN FOR PRICE & AVAILABILITY!
ASE CERTIFIED AND IN BUSINESS SINCE 1975
OVER 250 ENGINES & 450 CYLINDER HEADS IN STOCK!

R & G MACHINING AND ENGINE PARTS

ALL MAKES AND MODELS - FOREIGN AND DOMESTIC
AGRICULTURAL, INDUSTRIAL, MARINE AND MOTOR HOMES

GRUMPY'S DIESELS AND TRUCK REPAIR

WE WORK ON TRUCKS, TRACTORS AND LOADERS



MULINO, OREGON **503-829-6038**



(Continued from Page 14)

various job sites, they also have three self-loaders and one mule train logging truck. They will still take on small logging jobs in the area, but the bread and butter of P'n'D has turned into the tree service.

"We've just slowly been getting more and more equipment," Chris Jr. said. "The tree service business has its ups and downs

but we have so many different avenues to do things that this has been our best year yet."

Storms — which can cause plenty of blown down trees — are a boom in business for the company. Sometimes a really bad storm can keep the company working at maximum capacity for up the two weeks afterwards. P'n'D keeps a 24-hour emergency line open for customers.

The company also has two mechanics, with Greg Whitlock

as the maintenance supervisor at their Maple Valley location.

"The place has evolved to a point where it's not going to slow down anytime soon," Whitlock said. "We have excelled and grown so quickly in a short time period. We're in really good shape and we pretty much steamroll through."

Along with their Maple Valley location that has a firewood processor and cords of firewood as far as the eye can see, the com-

pany also has a 40-acre site in Ravensdale, Wash. where they keep their logs and more firewood. They sell up to 1,300 cords of wood a year.

"I'm wood hoarder," Chris Sr. said with a laugh.

The up and down months in the amount of work has given way to constant work. The working conditions are certainly safer

(Continued on Page 17)

NORTHWEST TRUCK PARTS LEADER

Visit our nationwide network at www.LKQHEAVYTRUCK.COM

2012 WESTERN STAR



CALL FOR MORE INFORMATION!

- **9,000 Miles!**
- Cab & Hood
- Detroit DD-13, 450 HP
- FRO16210C
- 18,000 Front Axle

- LATE MODEL REAR ENDS -

DS461 Peterbilt Air Trac	\$6,500
SSHD Peterbilt Air Trac	4,000
DS402 Eaton Peterbilt Air	3,750
DS404 Eaton Peterbilt Air Trac	5,250
RT40-145 Rockwell Peterbilt Air Trac	5,250
DS461 Kenworth AG100 Suspension	6,500
RT46-160 Hendrickson Pad Suspension	Call!
RT46-160 Chalmers Suspension	8,000
RT46-160 Air Liner Suspension	6,500
RT40-145 Hendrickson Air Ride	2,750
RT40-145 Air Liner Suspension	2,750
DS404 Air Glide 200 & 400	3,250
DS404 Chalmers Susp., 4:33 Ratio w/Lockers	4,750
SSHD Hendrickson Pad Suspension	3,500



CUMMINS EGR ISX
485H.P.
2011 KW TRUCK
LOW MILES - **CALL**



CAT C-15 475 W-JAKE
SEVERAL TO CHOOSE FROM
\$9,500 TO \$12,500

- REBUILT TRANSMISSIONS - (All Prices Exchange)

RT-6609A	\$2,350	RTLO-16610B	\$2,750	RTO-14713	\$3,100	RTO-16915	\$2,650
RT-7608LL	2,750	FRO-16210B,C	3,150	RTO-16713	3,300	RTLO-16618	3,200
RTX-14908LL	3,250	RTO-16710C	2,950	RTO-16913	3,500	RTLO-16718	3,850
RTX-14609B	2,250	RTO-12513	2,100	RTO-18913	3,750	RTLO-18918	4,350
RTX-16709B	3,100	RTO-14613	2,400	RTO-14715	2,750	RTLO-20918	4,625

- EXCHANGE REBUILT REAR ENDS -

SQHD Front	\$1,325	RD20-145 Front	\$1,750	RS402 Rear	\$1,100
SQHD Rear	.875	RR20-145 Rear	1,050	DS404 Front	1,575
SQ100 Front	1,550	DS402 Front	1,750	RS404 Rear	1,000
SQ100 Rear	.950				



2006 SER. 60 DEDEC V
LOW MILES - **CALL!**

"SPECIAL"
DT466
3208T CAT
5.9 - 8.3
CUMMINS
CALL

"SPECIAL"
CAT 3406
425
Complete Rebuild
\$14,250
Exch.

"SPECIAL"
REBUILT
CUMMINS
BCIII 400
\$12,000

DETROIT
60 SERIES DD-5
Several to Choose From
\$7,500 to
\$10,000

"SPECIAL"
Cummins
N-14 Plus
Rebuilt
\$14,750
Exch.



SPECIAL
N-14 Cummins Select+,
460-525 h.p.-Super Condition
\$6,500-\$8,500

- MACK -	
E6-300, Good Runner	\$4,250
E7-400, Mack Brake	8,500
E7-454, Elect	7,750
E7-460, 2001 Model	8,750

- DETROIT -	
Series 60 12.7 DDEC II	5,200
Series 60 12.7 DDEC III	6,500
Series 60 12.7 DDEC IV	7,750
Series 60 12.7 D-III, In-Frame	13,000
Series 60 12.7 EGR	7,000-10,500

- CUMMINS -	
ISX EGR 535-2005	\$12,000
ISM 420, w/ Jake	8,750
Big Cam III 400, Reconditioned/ Exch.	9,500
N-14 Select+ 460-525 Exch	7,750
N-14 Select 460, w/ Jake	7,500
M-11 Select 370, w/ Jake	5,750
Big Cam III 350, w/ Jake	4,750
8.3 210 HP	4,750
5.9 6-Cyl., Super Shape	3,750

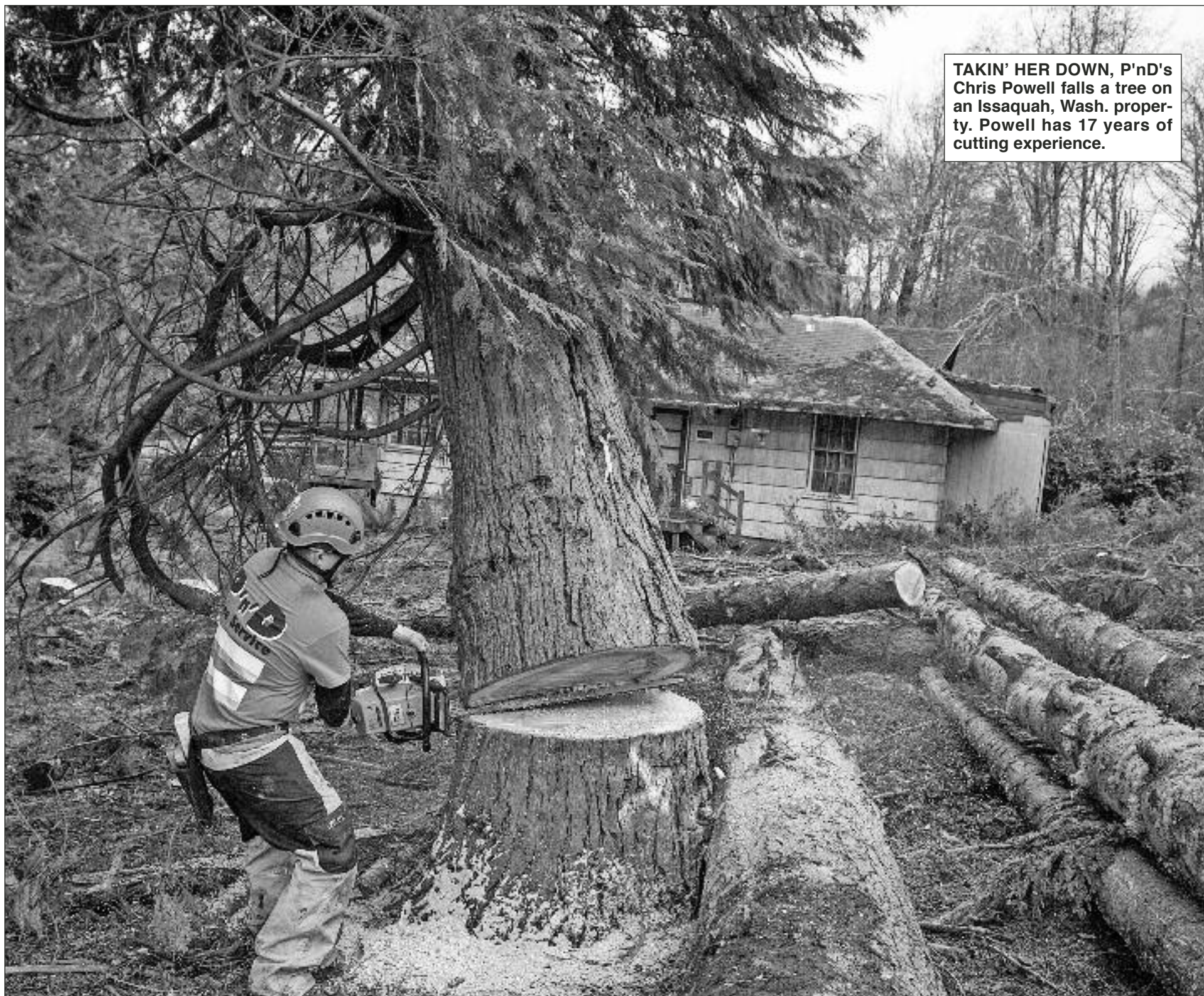
- CAT -	
3208N 210 HP	\$3,500
3406B 425, Rebuilt/Exch	14,500
3406B 425, Used	7,750
3406E 435, w/ Jake, Used	7,850
3406E 475, w/ Jake, Used	8,500
C-15 475, w/ Jake, Used Starting @	9,000
C-15 475, 2006 Model, Starting @	9,500
C-13 Accert 430, 2006, Starting @	10,000
- VOLVO -	
VD-12 465, 2006	\$7,500
VD-12 425, 1997	5,000

NORTHWEST LEADER IN 46,000 LB. REAR ENDS!



Air Liner, Hendrickson HN, Hendrickson Air, Kenworth 8-Bag, Air Trac, Neway

LKQ WHOLESALE TRUCK PARTS & EQUIPMENT
Nationwide & Canada
1-800-547-1315
6126 N.E. 60th Ave. Portland, OR 97218
HOURS: 8:00 - 5:30 Monday thru Friday
FAX# 1-503-288-6337 • DELIVERY AVAILABLE
Portland
(503) 288-6333



TAKIN' HER DOWN, P'nD's Chris Powell falls a tree on an Issaquah, Wash. property. Powell has 17 years of cutting experience.



Quality Diesel Parts

PH: 800-852-9488 Fax: 503-252-9652
www.qualitydieselparts.com

Allis Chalmers
Bendix
Buda
Case
Cat Industrial
Cat Marine
Cat Off-Highway
Cat Truck
Continental
Cummins
Davis Brown
Detroit
Deutz

NEW ARRIVALS

Cummins N-14E

Navistar 466E

Dresser/IH
Dodge Truck
Ford Industrial
Ford Tractor
Ford Truck
GMC Truck
Navistar/IH
Iveco
John Deere
Komatsu
Mack
Massey-Ferguson
Perkins
And Much More



G. W. GANNON EQUIPMENT

31914 ROLLAND DRIVE
TANGENT, OR 97389
(5 MILES SOUTH OF ALBANY)

(541) 928-5244



1990 Peerless short log trailer, aluminum wheels, electric scales with 8'6" bunks **\$10,500**



1999 Freightliner, series 60, 18 speed, long wheelbase **\$15,500**



Trail King TK 20 ramp trailer ... **\$5,500**

Several
PEERLESS
Long Log
Trailers
8'6" bunks with
elec. scales.
**Call
for
Prices**



PND

(Continued from Page 14)

than out in the woods, but the nature of the business also presents its own challenges: traffic and making sure the customer is happy with their work.

"When we started this I had more of a logging and cutting mentality," Chris Jr. said. "Now you take pride in learning how to provide good customer service."

P'n'D provides free quotes on jobs for their customers and has an office staff of three to keep things running smoothly. Chris Jr. handles the out-and-about operations of the tree service, while Chris Sr. focuses on office business and the logging truck aspect of things.

"We've got some of the best tree guys you could ever find," Whitlock said. "Guys that can climb and rappel the best I've ever been around. Chris Jr., he's been involved with cutting a long time, since he was 16, so as far as I'm concerned, we've got the best guys."

Their reputation has made its rounds around the area as they've done work on freeway-

widening projects, Boeing sites, the Naval Shipyards in Bremerton, Ft. Lewis and they've worked as far south as Olympia. In all they have around 100 contractors that they work for along with homeowners' individual projects.

"Being a timber cutting, I kind of learned what it means to be flat out working," Chris Sr. said. "I've never had an easy day's work, although now I get up a little later in the morning. We incorporate how my dad taught me how to work into the company, and we expect the guys that work for us to do the same and it shows."



LOG TRUCKER VIDEO

Download a QR reader app on your smartphone and scan this to see P'n'D in action.



BRIAN KILMER runs the stump grinder for P'n'D taking out any trace of the two trees that once stood at a Puget Sound-area residence. The company has over 50 pieces of equipment and several stump grinders.

17

MARCH 2015

LOG TRUCKER

WHIT-LOG Trailers

P.O. BOX 668 • WILBUR, OR 97494

WE ARE NOW ON FACEBOOK!
Check out all the pictures and Like Our Page!



www.facebook.com/Whitlogtrailers.com



Duane Rowe, TILLAMOOK, OR, Brand New 2015 Whit-Log NBSE100 Long Logger with Matching Truck Equipment. Custom Aluminum Cab Rack, Custom Extra Wide Frame Steps, Double Tapered Stinger, and Much More... **Thanks Duane!!**



Morrell Logging, PLEASANT HILL, OR, Brand New 2015 Whit-Log SEWC100 Long Logger with Matching Quick Change Long Long/Lowboy Truck Equipment. Custom Steel Cab Rack, Custom Aluminum Hydraulic Tank/Tool Box Combo, Custom Side Mount Boxes, and Much More... **Thanks Mitch!!!**



PER, ELMIRA, OR, Brand New 2015 Whit-Log SEWC100 Long Logger with Matching Truck Equipment. Custom Steel Cab Rack, Double Tapered Stinger, and Much More... **Thanks John, Dan, and Ryan!!**



Babich Trucking, CRESCENT CITY, CA, Brand New 2015 Whit-Log SEWC100 Long Logger with Matching Truck Equipment. Custom Aluminum Cab Rack, Side Mount Boxes, Tapered Down Back half of Frame, and Much More... **Thanks Henry!!**

OFFICE: (541) 673-1166
EVENINGS: GENE: (541) 673-0491

TOLL FREE 1-800-452-1234
www.whitlogtrailers.com

TIMBER NEWS

News from around the Industry....

Lumber Prices Falling Because of Overcapacity

After demand from China had boosted the lumber prices in the US to \$405/thousand board feet - the highest level since 2008, the short term lumber price has been on a downward trend for two years straight. This comes after the economic momentum in China slows and European importers of lumber has used the weakness to the euro against the dollar to their advantage, SpendMatter.com reports.

It seems, the website says, the US lumber industry has not reacted fast enough to the drop in demand and has caused a significant level of overcapacity in the market.

Timber harvest in the US has gone up for the fourth consecutive year, Spend Matter.com says, softwood lumber harvest was five percent high in the third quarter in 2014 than in the previous year. In October 2014, US lumber production was 2.8 billion board feet which was up seven percent from the previous month according to the Western Wood Products Association Lumber Track.

This comes at a puzzling time as the housing and construction industry has added roughly 48,000 jobs in December 2014, and 290,000 total for the whole year. That's the largest increase since 2005 and shows signs of the economy picking up.

The number of mortgage applications for house sales jumped to 23.6 percent in January the highest since Sept. 2014, while the number of people in their early 20s is the largest group in the US, and represents the biggest consumers in the economy. A whopping 1.1 million housing builds have been reported to have start-

ed, but the economy has not picked up as quickly as the housing and construction industry has perceived as consumer confidence is still fickle.

The drop in lumber prices isn't expected to stay very long as easing in mortgage restrictions and the new houses being built is expected to push the lumber prices up again in the near future.

Firewood Shortage Hitting New England

The Boston Globe is reporting a shortage of firewood in New England after last winter's cold temperatures caused residents to make a rush to stock their woodpiles this summer.

Now in February, most suppli-

ers of firewood are completely out of wood and what is left is considerably more expensive.

Since fresh-cut wood doesn't burn well because of high water content, most sellers let the wood dry or season for an entire year. Since the East Coast was hit was a frightfully cold winter last year, a fear of more cold temperatures caused most of the region's seasoned wood to be gone by the fall.

Kilns can be used to dry fresh wood and reduce to seasoning process to just a few days. The cost, however, is at least a hundred dollars more expensive, said Scott Salveson, the director of the National Firewood Association.

Charles Levesque of Innovative Natural Resources Solutions LLC - which specializes in forestry

products and is based in New Hampshire - there is a high demand from the region's paper mills and biomass electricity generators. This means they're using the potential wood that could be used for firewood.

About 14 percent of wood harvested in New England is used for firewood, while 18 percent is burned in biomass generators and 38 percent is used to make paper.

As seasoned wood stocks ran out months ago, the wholesale price of kiln-dried wood has increased in wholesale prices by 10 to 15 percent. According to census data, 1.8 percent of households in

(Continued on Page 19)

FOR SALE



Short Log Trailer, 97 General.....\$8,000

360-520-9849

FOR SALE



1997 379 Pete Cat Eng., New exhaust, new drive tires, excellent condition.....\$38,000

360-520-9849

FOR SALE



2007 KW T800 - ISX 530, 46 Rears/Lockers, 18-spd, Pre Max Susp, All Alum Wheels, Alum Headrack, Aero Extended Cab, Vulcan Scales, 390K, 66 Peerless Spring Trailer ..\$87,500

209-293-4114

AFTERMARKET • NEW OEM
USED PARTS • HOODS

I-5 & Exit 59 Toledo, WA
Monday to Friday
8-4:30pm

MARCH SPECIAL



Washington
Truck Rebuilders
www.washingtontruckrebuilders.com

TRUCK • TRAILER • COLLISION
FIBERGLASS REPAIR

1-800-373-3719

wtr@toledotel.com

MARCH SPECIAL

FOR SALE



FOR SALE 4 Log Trucks,
(3) 2005, (1) 2006, T-800 KW, C15
CATS, matching Whit-Log gear.....
\$71,000-73,000

503-791-2273

**3 Axle
Spring
Trailer
Suspension,
\$2,200**

2014 Kenworth T-800,

- 450 HP ISX Engine
- RTO 16913 Trans
- 40K Rears
- 3.70 Gear Ratio
- 13K Front Axle
- 185" Wheelbase
- New Steer Tires
- 90% on Drive Tires
- **Only 48K Miles!!!**
- **Runs, Drives & Looks As Good As New**

Peterbilt 379
Fiberglass Fenders
w/built in Liners

Special!
\$260 ea.



New Paccar Tow Pins
Fit Pete & KW
\$275 ea.

Timber News

(Continued from Page 18)

Massachusetts use wood stoves, while 6.7 percent of houses across other New England states use wood stoves. This means the rise in wood prices and the lack of it has hit particularly high this winter.

Southeast Alaska Hoping to have Timber Industry Rebound With New Bill

With conservation groups using litigation to block forest sales by the federal government, the timber industry in Southeast Alaska has seen logging dwindle to just a few hundred jobs in the area. Once an economic driver, the Juneau Empire reports, it has suffered since almost every large sale in the Tongass area in the past 20

years has been appealed or litigated.

For example the Big Thorne sale was awarded last fall to the Viking Lumber Co. but three conservation groups - the Southeast Alaska Conservation Council, the Sierra Club and the Alaska Wilderness League brought lawsuits against the U.S. Forest Service.

The Alaskan House Resources committee heard and held a bill that would give the Alaska Department of Natural Resources the ability to continue to fill the timber gap supply left by federal sales tied up in court. It's expected to be fall before a final court decision can be made.

For years, Alaska's Department of Natural Resources has been providing small timber sales to mills as a measure to provide a stopgap source of material and work. The proposed bill, HB87,

would remove some of the restrictions place on the most flexible state timber sales while allowing the state to continue supporting mills in Southeastern Alaska.

In two to three years, the state will hit its limit on selling timber in the region but the new bill

would allow the state to continue selling while federal timber sales continue to be fought over in court.

In Southeast Alaska, there is about 50,000 acres of state forest. The Tongass National Forest has 17 million acres of forest.

-Loggers World/Log Trucker

19

MARCH 2015

LOG TRUCKER

WWW.HDTRANSAXLE.COM

Looking for Journeyman

Heavy Duty Truck Mechanic

Monroe, WA location

Please Email for Job Details HDLogistics@gmail.com

5+ years experience - Rebuilding Eaton Spicer, Meritor differentials.

Rebuilding Brakes, Seals & Axle Replacement

WE BUY CLARK AND AXLETECH PLANETARY AXLES



CLARK & ROCKWELL Planetaries
& SHULER Axle Parts **IN STOCK!**

OVER 40 FULLERS

in Stock and Ready to Go!

Rebuilt AT1202 Air or Mechanical

New MERITOR Units! **IN STOCK!**

New Surplus ROCKWELL! **IN STOCK!**

- 58,000 lb Tandem DBL locker

DANA Units ! **IN STOCK !**

- 1241C - AM1000-4C

MORE UNITS THAN WE CAN LIST!

HEAVY DUTY TRANSAXLE



888-383-3301

360-794-2021

360-794-2112 Fax

16891 146th St. SE

Suite #103

Monroe, WA 98272

WE OFFER:

•General Truck
Repair

•Complete Diesel
Engine Service

Cat - Cummins - Detroit

•Hendrickson
Rebush Center

Incl. Hendrickson 380 Series
Equalizer Beams

We Rebush Log Trailers

CHALMERS & 8-BAG
KENWORTH SUSPENSION
REBUSHES

- Stop By Our Shop -



**COMPLETE
LOWER
REBUSH**

\$1075

Bar Pins Extra

Usually in 3 Hours or less
Call For Appointment



SCHELLER DIESEL SERVICE

9144 Kimmie Street - Olympia, WA. 98502 • (360) 943-9818

CABLE-LITE LOGGING WRAPPERS

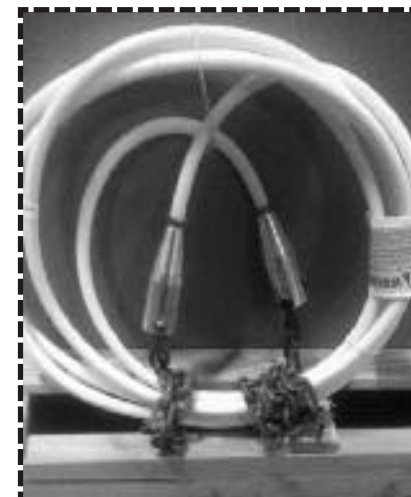
THE HIGH-TECH
REPLACEMENT FOR
WIRE ROPE WRAPPERS

**Reduce Shoulder
Injuries**

✓ 3 times lighter than equivalent
strength wire rope

**Reduce Hand
Injuries**

✓ No "jaggers" to tear up your
hands



Cable-Lite Logging Wrappers have been field tested and proven to provide a lightweight, ergonomic replacement to the standard wire rope wrappers. Cable-Lite Wrappers meet or exceed all Federal and State regulations and are labeled for easy inspection.

HARBOR Saw & Supply

3102 Simpson Ave. in Hoquiam!

800-786-6463 • (360) 532 4600

LOG TRUCKER

MARCH 2015

ADVERTISERS INDEX

A-1 Truck Repair LLC.....6	Heavy Duty Transaxle Inc19
Advanced Hydraulic and Ind. Supply12	Kenworth Northwest11
Alpine Industrial LLC4	L&M Truck Sales, Inc.13
Business Equipment Loans..10	Left Coast Truck & Equip. Parts5
Coast Truck Centers.....12	Lincoln Industrial Supply.....13
G.W. Gannon Equipment.....16	LKQ K.C. Truck Parts20
General Trailer3	LKQ Wholesale Truck Parts, Inc.....15
Harbor Saw & Supply19	

FOR SALE



50' Hayrack with lift axle..
.....**\$12,000**

360-520-9849

FILTERS

Air • Fuel • Water • Oil • Hydraulic

**Gates Hoses & Fittings
Lincoln Lubrication Equip.**

Open Saturdays 8 a.m.- 1 p.m.
Williams Oil Filter Service Co.
1247 Puyallup Ave., Tacoma, WA 98421
(253) 627-8163
Toll Free: **1-800-522-1250**

LT Advertiser deadline20	Southwest Products.....9
Miller Truck Salvage LLC14	St. Johns Truck & Equipment .8
Quality Diesel Parts16	The Gear Box Inc.20
R&G Machining & Engine Parts14	United Gear11
Radiator Supply House, Inc..10	Washington Truck Rebuilders18
Scheller Diesel Service.....19	Whit-Log, Inc.17
Schott Parts & Accessories6	



GEAR BOX Inc.

TRANSMISSION & DIFFERENTIAL REBUILD & REPAIR
1037 State Street (Exit 79 off I-5) • Chehalis, WA.

8:00 a.m. - 5:00 p.m.
Monday - Friday

(360) 748-8350

**Let us Lower Your Cost Per Mile
with our
High Quality Time & Material Rebuilds**

★ FULLER
★ EATON
TRANSMISSIONS
TRANSFER CASES
★ SPICER
★ ROCKWELL
DIFFERENTIALS
AUXILIARIES

Complete Time &
Material Rebuild
Unit Comes with a
**1 Yr. Unlimited
Mileage Warranty**



We Pride Ourselves on Genuine OEM Parts

CUSTOM BUILD or EXCHANGE

LKQ KC TRUCK PARTS

www.kctruckparts.com

**(800) 622-5170
(360) 736-3344**

183 STATE HWY. 508, NAPA VINE, WA.

**WE HAVE
WHAT YOU
NEED-
CALL US!!**



2001 KW W900, C-15 Cat 6NZ, RTLO18918B, AG400 40K, ...PARTING OUT



2011 KW T800, ISX15 Cummins, RTLO18918B, 46K/DBL Lockers/AG400PARTING OUT



2011 KW T800, ISX15 486HP, Allison 4000HS, Paccar AG400L, DSHP 40's/4.10.PARTING OUT



2012 KW W900, ISX 500 Cummins, 18-speed, Air Ride w/lockersPARTING OUT



2007 Pete 378, ISX 565 HP, RTLO18918B, 69K Tri/Drive, lockers, Air RidePARTING OUT



2000 KW T800 High Hood, N14 525 Cummins, Fuller 18-spd., DS463's 4.33 AG/400 w/lockersPARTING OUT