

LOGGERS WORLD

VOLUME 50 NUMBER 3

To Advertise Call: (800) 462-8283

MARCH 2015

PatCo LOGGING



WCLA ANNUAL MEETING
THE TULALIP RESORT CASINO
TULALIP, WASHINGTON

March 27-28



**REDWOOD REGION LOGGING
CONFERENCE**
REDWOOD ACRES FAIRGROUNDS
EUREKA, CALIFORNIA

March 19-21

PRSR STD
U.S. POSTAGE
PAID
PERMIT NO. 178
SALEM, OR

LOGGERS WORLD LLC
P. O. BOX 1631
CHEHALIS, WA 98532-8425

BEST 4X4 BY FAR

COMING THIS SPRING

NEW 622C FOUR WHEEL DRIVE MTP



- Four wheel drive with powerful 702/400 cc feed motors, increased feed speed, and perfectly weighted for a 21 ton excavator
- Waratah Shuffling feature for independent log driving during MTP
- 360 degree Continuous Rotation Rotator and simple hose routing
- High torque, high performance 3/4 saw with auto chain tensioning
- Fabricated delimb arms provide clean delimbing multi or single stem
- New C-Series high efficient hydraulic valve design provides increased hydraulic flow, greater speeds, and higher productivity
- New TimberRite® Automation features complete with new measuring and diameter design for optimal length and diameter quality in both single stem and MTP (multi tree processing)

Kelso, Washington
+1 (360) 636-2950

Atlanta, Georgia
+1 (770) 692-0380

 **waratah**
www.waratah.net



"I've been running the SATCO head really hard, even processing much larger diameter wood than the rated 22". It's definitely built strong and built to last just like the 320D FM it's mounted on. The machine has great power and is super stable even on rolling steep slopes."

Gary Anderson, operator
Hansen Logging LLC
Chewelah, WA

You need equipment that will hit the ground running. And stay running. The Cat® 320D FM with SATCO 322T processor head is fully supported by Caterpillar with Cat parts. The beefy three-roller head has the reliability and durability to match the Cat 320D FM. Hoses from the carrier to the head are routed through the linkage protecting them from damage. The main valve is rated at 6100 PSI and easily handles carrier pressures, reducing wear on the hydraulics and seals. The drive motors are equipped with a heavy-duty bearing hub that absorbs the loading from the weight of the tree, so the motors last longer. Complete, durable harvesting systems — that's what we're built to deliver.

Look to your Cat dealer for financing and all the machines you need for sustainable harvesting and land management, forestry road construction, hauling and millyard. Total support from one source.

www.cat.com/forestry

Gary Anderson



BUILT FOR IT.™

CASHMAN



www.cashmanequipment.com
Nevada and Eastern Sierra
800-937-2326

HOLT
of California



www.holtca.com
Central Northern California
800-452-5888

N C MACHINERY



www.ncmachinery.com
Western and
Central Washington
800-562-4735 and
Alaska 800-478-7000

PETERSON



www.petersoncat.com
Northern California,
Western and Central Oregon
and Southwestern Washington
800-452-7676

WESTERN
STATES



www.westernstatescat.com
Idaho, Western Montana,
Eastern Washington,
Eastern Oregon and
Northwest Wyoming
800-852-2287

Finley's Rigging Shack "Classic"



Originally Published in February of 1977

You'd think that any publisher and bull manure spreader worthy of his calling would have a message of inspiration at this time of the year wouldn't you? Not so in this case.

Nineteen hundred and seventy seven is upon us and for six months or more the experts have been predicting all kind of things for this brand new year. Some are positive and hopeful. Some of these predictions are full of negative guesses and are dismal in the extreme.

We must realize that most of these predictions are just that--a game of guess work. Their guesses are on the average for entire industries or the whole darned country. Even if their guesses were right on the money it wouldn't necessarily make any difference to us. Their guesses are based on absolute averages, of which there ain't no such thing. Our experiences and successes can run to being entirely opposite guesses that are correct on a national average.

As far as I'm concerned 1977 is going to be my best year yet. I'm going to do more work-----

I'm going to do better work and enjoy it more. Our little business is going to go and to grow.

We are committed to the idea that we must always do better. I'm looking forward to an interesting year of challenges and much enjoyment from meeting these challenges. Hope this is true of you also.

TRAVELING:

Since I do a lot of traveling I talk about it a lot. One of my problems is one of getting work done while I'm away from the office headquarters. This year am getting a slick outfit for a traveling office, a home away from home and lots of other ad-

vantages. The vehicle will be a four wheel drive pick-up. The office and living quarters is going to be a 26 foot fifth wheel trailer. The trailer is self-contained.

Now what we need to do is first



FINLEY HAYS

(Continued on Page 5)
See "Rigging Shack"

Introducing the **NEW** Hyundai 3220-9CTL



- Powered by Cummins QSC 278-HP Tier 3 Diesel with Hydraulic Proportional Fan
- Kawasaki Hydraulic Pumps (2 x 68.7 GPM Flow)
- High/Wide Undercarriage (28" ground clearance / 11'9" wide)
- Heavy Duty Rails
- 28" 2-Bar Grouser Pads
- Bolt-On Rock Guards
- Roomy Operator's Cab with Excellent Visibility, includes the following:
 - Color Display Monitor
 - Three (3) Power Modes
 - Heated Suspension Seat
 - Climate Control Air Conditioner / Heater
 - AM/FM/CD
 - CB Radio
- Woyoon Logger Guarding Package
 - 48" Tilting Cab Riser
 - Heavy Duty Cab Guard
 - Heavy Duty Side Doors
 - Under Belly Guarding
 - Cat Walks
 - Log Deflector
 - Room Lighting Package
 - Computer Cover
- 41' Logger Room with Live Heel and Arm Cylinder Guard
- Approx. machine weight 96,000#

Cascade TRADER inc.
EQUIPMENT SALES - LOGGING & CONSTRUCTION
1380 NW State Ave Chehalis, WA 98532
(360) 748-1182

In This Issue...



COVER PAGE PICTURE: Ready to roll off the jobsite, PatCo Logging's Kelly Patton puts the finishing touches on a load for Jason Greens '84 Peterbuilt. See "Committed to the Woods" starting on Page 6.

2 RIGGING SHACK "CLASSIC" - by Finley Hays

4 "COMMITTED TO THE WOODS"

PATCO LOGGING LLC • FORTUNA, CALIFORNIA.

- by Michael (Hoss) Barker

21 BLAST FROM THE PAST

23 AS WE SEE IT...

24 WHAT THE HECK ARE THESE?

24 IRONMART

26 OBAMA'S EPA LAND GRAB

- by William Perry Pendley

27 SHOW & SELL

28 INDEX/COMING EVENTS



LOGGERS WORLD

Published by LOGGERS WORLD LLC

Founded in 1964 by Finley Hays

Phone (360) 262-3376



Member and Supporter of the
American Loggers Council Since 1994

PUBLISHERSKevin & Nancy Core
EDITOR EMERITUSFinley Hays
EDITOR/WRITERBrandon Hansen
ADVERTISINGKevin Core
OFFICE MANAGERNancy Core

POSTMASTER: Send address
changes to:

LOGGERS WORLD LLC,
P. O. Box 1631, Chehalis, WA 98532-8425

E-Mail: logworld@aol.com

SUBSCRIPTION RATE (In U.S.A.): \$25.00 per year;
Two years for \$50.00

LOGGERS WORLD LLC cannot and does not assume responsibility for the contents of any advertising in Loggers World. The representations made by advertising is the responsibility of the advertiser and not Loggers World. Loggers World does not knowingly accept advertising that is false or misleading. The limit of Loggers World liability in case of a mistake made in advertising copy by Loggers World will be the charge of the actual space containing the error or less for that particular advertisement

Rigging Shack

(Continued from Page 4)

make a darkroom out of the bathroom. Then tear out one davenport-bed combination and tailor make a desk to fit in that space. Then we need a generator that will supply some needed A/C power for lights and other things.

By then we should have a compact, comfortable and efficient rig to take around from place to place. Am looking forward to much visiting loggers this coming year and I'll now have a place to boil coffee at a mo-

ments notice.

THIS ISSUE OF LOGGERS WORLD is one of our largest for some months. One big reason for this is that the Oregon Logging Conference is coming up. This I guess, is one of the better attended conferences with lots of interest and a big machinery show always connected with it. A fine place to go to listen to good speakers and get a good hard look at new machinery. A real bang-up affair that many people come to see and which is enjoyed by

most.

THE GOVERNOR AND HIS BOOK:

For the past 12 years we in Washington State have been blessed with one of the best governors ever in the history of our state and one of the best governors in the nation. I got this on good authority. From a book put out by the state at the bequest or request or authority of ex-governor Dan Evens. It was thought that this book was so important that it should be put out before Evens left office and the object was to tell us cit-

izens just how lucky we were that Gov. Dan devoted 12 years of his life to our welfare.

I guess us taxpayers paid for the book and it was sent out free to thousands of people---guessing again. At least we got one at no cost and, as far as I'm concerned, for no good reason. This is a book I could do without---but I didn't get a chance too.

LOGGERS WORLD MARCH 2015



Authorized Dealer

Sales, Parts & Service
Your #1 Established Forestry Equipment Dealer

**Ask About Our Special
Financing: Up to 60 months**

All offers subject to credit approval



**Cascade Trader has a Complete Line of new Doosan Log Loaders,
Excavators & Wheel Loaders for your Logging & Construction Needs!**

LOG LOADERS

NEW DOOSAN Excavators & Log Loaders P.O.R.	
DOOSAN DX225LL, 8,000 hrs.	\$129,500
DOOSAN S225 LL, excellent condition.	\$118,500
DOOSAN DX300 LL Log Loader	P.O.R.
DOOSAN DX300 LL, recent under	P.O.R.
DOOSAN S 300 LL Log Loader	P.O.R.
BARKO 475 Log Loader, must see	\$59,500
CASE 9040B Log Loader	\$39,500
CAT 235B Log Loader	\$17,500
CAT 320L Log Loader	\$37,500
HITACHI EX370 LL, rear entry	\$47,500
HITACHI 2250F Log Loader	\$84,500
JD 200LC Log Loader	\$27,500
JD 270LL Log Loader, recent updates	\$46,500
KOBELCO SK 290	\$55,000
KOBELCO SK350 Log Loader	\$135,000
LINK-BELT 210LX Logger, tong tosser pkg	\$137,500
LINK-BELT 240LX, new Isuzu	\$85,000
LINK-BELT 4300 CII Logger	\$39,500

FELLER BUNCHERS, PROCESSORS & FORWARDERS

Complete Parts & Service for your
Waratah Needs

DOOSAN DX225LL/Waratah HTH622B, exc	\$175,000
HITACHI Z350F Logger, HTH624	\$225,000
JD 2554LL/Waratah HTH 622B, exc.	\$139,500
JD 3554LL/Waratah HTH 624	\$139,500
KOBELCO SK120/Keto 150	\$25,000
KOBELCO 250 w/4400 Denharco	\$55,000
KOBELCO 250LL/HTH622B	\$89,500

KOBELCO SK330LL/Waratah HTH 624	\$110,000
KOMATSU PC220 LC-7, Pierce 3348 stroker	\$172,500
LINK-BELT 4300 CII Logger, Keto 750	\$55,000
MORBARK Model 27 Chiparvester	P.O.R.
TIGERCAT L870C FB, well maintained	\$225,000
TIGERCAT L830C, 5702 saw, 2010	\$299,000
TIMBCO T-425/Barsaw, recent under	\$65,000
TIMBCO T-445D/Barsaw	\$69,500
TIMBERJACK 933C Clambunk Forwarder	\$44,500
TIMBERJACK 1010 Forwarder	\$37,500
TIMBERJACK 1270 Harvester	\$35,000
TIMBERJACK 2618 FB, disc saw	\$45,000
VALMET 921 Harvester, 965 head	\$67,500
NOW IN STOCK: NEW WARATAH HTC 623C Harvester Head	P.O.R.
ALSO: Complete Parts & Service for your WARATAH/KETO Needs	P.O.R.

TOWERS & YARDERS

CAT 330B Log Loader, w/dual drums	\$157,500
HITACHI EX300, 3 drums	\$165,000
(2) MADILL 046 Yarders	P.O.R.
MADILL 071	\$85,000
MADILL 071, Parts unit	P.O.R.
PACIFIC 1188 Swing Yarder, track mt.	P.O.R.
(2) SIDEWINDERS, as is	\$42,000
SKAGIT BU-94 Drums - Parts only	P.O.R.
SKAGIT MYS-550 Slackline, trl. mt., 50'tower	P.O.R.
SKAGIT T-70, W/BU-80	\$15,000
T-BIRD TY80 Slackline/T-100 HD trl.	\$299,500
WASHINGTON 127W, Skookum trl. mt. w/rear steel	\$30,000
WASHINGTON 7840 Swing Yarder	\$45,000

TRUCKS & TRAILERS

GENERAL Lowboy, 60T, 2+2	\$55,000
KW '73 Dump Truck	\$8,950
EXCAVATORS, DOZERS, LOADERS, SKIDDERS, GRADERS, ETC.	
DOOSAN DX 225LC Exc. w/bkt & thumb wedge	\$59,500
CASE 9050B "Roadbuilder", excellent	\$42,500
CAT D3C, 1995, very clean	\$22,500
CAT D4H Track Skidder	P.O.R.
CAT 14E Grader	\$14,500
CAT 525B Grapple Skidder	\$65,000
CAT 527 Track Skidder, swing grapple	\$155,000
CAT 980C, bucket, rebuilt engine	\$42,500
CLARK 666, Cummins, good tires	\$12,500
A.W. Grader 301S 6WD Grader	\$14,500
FIAT ALLIS 8, winch/arch, SU	\$16,000
FIAT ALLIS FD9	\$22,500
FMC 220CA Track Skidder, fxd grapple, exc	\$34,500
INTERNATIONAL TD8E, winch, arch	\$12,000
JD 790E Ex., bucket, heel rack, grapple	P.O.R.
JD 850B Dozer, excl. UC	\$19,500
KMC Track Skidder, swinger, low hrs	\$89,500
KOBELCO 270 Excav	P.O.R.
KOEHRING/BANTAM 366 Exca.	\$17,500
LB 4300 CII Rd. Bldr, bkt & thumb	\$24,500
MOUNTAIN LOGGER ML150, new tires	\$18,500
TREE FARMER C5D Skidder, show cond	\$13,500
CARRIAGES	
BOMAN MARK V Motorized Carriage	\$35,000
EAGLE II, w/Bugs	\$10,000
EAGLE III Carriage	P.O.R.

KETO • WARATAH • EAGLE CARRIAGE

Rich Lennox	(360) 508-0192	Jim Wark	(360) 623-5219
John Welch	(360) 520-2082	Cooper Brunoff	(360) 880-7534
Shannon Pesicka	(360) 507-0542	John Griffin	(425) 210-9702
Mike Duch	(360) 880-6955		
Bill Pantier • Doosan Parts:	(360) 508-6294 Cell		
Traci Brunoff • Sales Coordinator:	(360) 880-7531		

www.cascadetrader.net

(360) 748-1182

fax (360) 748-1198 • Located at Exit 79 off I-5
1380 NW State Ave., Chehalis, WA 98532



PACIFIC FIBRE PRODUCTS
WANTED
Alder, Maple, Douglas Fir, Cedar
Hemlock, Cottonwood
PULP LOGS
Land & Timber or Timber Only
Ray Lemmons • 360-430-7040
Paul Hadaller • 360-431-9661
P.O. Box 278, 20 Fibre Way, Longview, WA.
Office: 360-577-7112

Oliver-Hammer Clothes Shop

**Clothing the
Working Man for
93 Years**

Wesco Caulk Boots, Redwing,
Carolina, Carhartt, North Star
Gloves, Hickory Shirts,
Logger "Riggin" Jeans and a
Whole Lot More

(360) 855-0395
821 Metcalf,
Sedro Woolley, WA 98284



HEADING FOR HIGHER GROUND on the Cat skidder with another bonus. Just a few turns and all the duff turns to a lovely mire waiting for a skidder to get stuck in it.

COMMITTED TO THE WOODS

By Michael (Hoss) Barker

I don't roll into a new town with all the bravado and 'shock and awe' that I did in my younger days. With the big 60 now in the rear view mirror, I just can't cut up like I used to and after all is said and done it's probably just as well.

You sure wouldn't know it though if you were one of the unfortunate people I was dodging when I made a turn to the north on the south bound off ramp of highway 101, my apologies to you all, don't see to well in the dark these days. I was looking for the

(Continued on Page 7)
See "PatCo"

800-439-9073 White Mountain Chain 208-267-6215
Bonners Ferry, Idaho • www.whitemountainchain.com

TRYGG

SMT Flexi
8mm - 5/16" & 9.5mm - 3/8"

Tailored for a perfect fit without the use of tools. SMT Flexi uses steel produced with boron, nickel, chrome and manganese, then fully hardened for maximum durability. Choose 8mm-5/16" or 9.5mm-3/8" to suit your requirements. Hardened 10mm hooks and 8mm side chain are standard on both sizes. Tightening rail is available as an option.

Heavy Duty
9.5mm - 3/8", 11mm - 7/16", 13mm - 1/2"

Heavy Duty. Grip for all conditions. "H" sections are easily removed for adjustment and replacement in the field. Consider SMT for superior fit and ride.

SMT & SMT Combo

A versatile traction chain for snow clearing, forestry and construction. Excellent grip, smooth ride and virtually trouble free performance.

Oversized studs increase grip and last longer!

SMT pattern holds the chain on top of the tire lugs, keeping the studs in constant contact with the terrain SMT Combo fits more than one tire size. Chain tightener is recommended for heavy chains.

13mm-1/2", 16mm-5/8", 19mm-3/4" SMT and SMT Combo.
9.5mm-3/8", 11mm-7/16" SMT



11 Spokane Street - Suite 306
Wenatchee, WA 98801

Toll Free 888.223.2600

www.fullcirclellc.us

DOUG POWELL

Who Says Money Doesn't Grow on Trees?

We Finance Loaders, Trucks, Skidders, Trailers, etc.

- Simple application only options
- Flexible financing
- Choose a loan or a lease
- New or used
- Buy from a dealer or private party

Isn't it time you made an investment in your machinery?

Call Doug Today!

888-223-2600 • dee@fullcirclellc.us

After hours cell: 509-393-5111



CC HEAVY EQUIPMENT.COM



2007 Doosan 225LC Processor Machine, Equipped With 2013 KETO 660 BTS Dangle Head Processor, With Top Saw, U/C 75%+, Triple Bar Grousers, Partial Rock Guards, Very Clean and Tight**\$145,500**



1995 Madill 3800, Rebuilt Pumps And Engine Approx. 2 Years Ago, U/C 60%+, Nice Tight Machine...**\$85,000**



2004 Link-Belt 240LX, Equipped With Log Max 7000, QC To Grapples, 58" Jewell Grapples, U/C 90%+, 18,500 hrs.**\$125,000**



2006 Link-Belt 330LX Road Builder, Waratah 624 Processor Head, New Hydraulic Pump, Excellent Condition ...**\$160,000**



2010 Link-Belt 240LX, 2010 Waratah Head, 8,600 hrs., Excellent Condition.**\$250,000**



1999 T-Bird 500E Road Builder, 1,100 hrs., Cab Riser, Cum Power, Single Bar High Walk U/C, Heel Rack and Grapple, Bucket and Thumb, Brush Rake, AC and Heat**\$125,000**



2004 Timberpro 820E, Log Max 7000, 8,200 hrs., One Directional Tilt Forward, Combo Machine, Comes With Grapples.**\$252,000**



2004 Kobelco 250, Shovel Logger Extreme, 17,000 hrs., Mitsubishi Engine, Jewell 38' Boom, 58" Grapple, Good U/C, Forestry Cab.....**\$75,000**



Madill 071, 4 Guylines, New 8V71T, Fast Chain, Deluxe Cab, Very Good Steel Tracks, Excellent Lines, Radios, Eagle II Skycar, Excellent Yarder!....**\$135,000**



2007 Valmet 425 Processor Machine, 8,000 hrs., Equipped With Log Max 7000XT, With 3,000 hrs. On The Head, Squirt Boom, U/C 80%+, Excellent Condition....**\$210,000**



2001 CAT 330BLL Log Loader, CAT 3306 Engine, Triple Bar Grousers, U/C 60%+, CAT Grapple, Tight Machine, Excellent Care, Used Under A Yarder**\$59,500**



1987 KW T800, 4 Axle, CAT 3406B, 15 SP, 12-15 yd. Dump Truck. **THIS TRUCK QC TO LOG TRUCK.** Comes With 8'6" Bunks, Push-Up Stakes, Elec-tronic Scales. Also 5th Wheel, Wet-Kit.....**\$55,000**



1985 CAT D7G, 137 ORIGINAL HRS., Weldco Beales Enclosed Cab, Semi-U Dozer With Tilt, Hyster Winch.....**\$95,000**



2012 CAT 324D, 6,100 hrs., Equipped With 2012 Logmax 7000XT..**\$350,000**



2001 CAT 517, 14,000 hrs., Swinger, New U/C and Paint, Engine & Transmission Previously Rebuilt**\$129,500**



2006 Link-Belt 240X2, With Pierce 3348 Stroker, 15,800 hrs., Forestry Cab, Excellent Condition ...**\$150,000**



2006 Doosan 225 RB, Waratah 622B, 11,500 hrs., Recent Rebuilt Engine and Pump, New Tune Up on Head**\$125,000**

WE'VE MOVED To 665 S. Pacific Hwy W

Our New Location Is Right On Hwy 99W In Rickreall Halfway Between Monmouth, Dallas & Salem.

**Watch Our Ad
For Our Grand Opening!**

www.ccheavyequipment.com

Check out the CATs on our Website:
225BLC, 320CLL, 322C, 324D,
330BLL, D5H, D5HTSK, D6C,
D6C10K, D6D, D7G, 977D, 517, 518C,
518 Swinger, 527, 12F, 12G



2014 KMC 2600 Swing Grapple, Cummins 6BTA 174 hp., Clark 28000 Series Trans., 4 Speed Powershift Integral Torque Converter, AC/Heat..**\$290,000**



Skagit BU84 T100HD, 7 Guylines, RARE Factory Slackline, 4 Jack Trailer, Reinforced Booster Ready, New Cummins Big Cam 400, Allison 6 Speed + Reverse, \$100,000 In Recent Repairs..**\$140,000**

"I spied the Best Western briefly while showing off in the Subaru and slithered my way there lest someone called the cops on me."

PatCo

(Continued from Page 6)

Best Western motel in Fortuna, CA. I haven't heard that many horns and that much yelling since old Tlingkit Pete pulled the Berger tower over out of Ketchikan back in '81. I pulled a move in the old Subaru wagon that Jeff Gordon would approve of and got out of there in a hurry...didn't think me or the old Subaru still had it in us! I spied the Best Western briefly while showing off in the Subaru and slithered my way there lest someone called the cops on me.

My mission was clear. The Boss, Kevin Core, newly minted owner of Logger's World Publications, had instructed me to go to Fortuna, CA and track down Heath Cook and Kelly Patton, partners in a new logging venture called PatCo Logging LLC, interview them and take some pictures of their operation just a few miles out of town while inflicting the least possible amount of mayhem and the like on the community. I was off to promising start.

(Continued on Page 13)
See "PatCo"

A whole new meaning to "log in"

**LOGGERS
WORLD.COM**



CC HEAVY EQUIPMENT.COM

Dallas/Salem Rickreall, OR

Carl Cornthwaite • 503-507-7230 • carl@ccheavyequipment.com



FEATURED IN THIS MONTH'S ISSUE



PatCo Logging LLC

Based out of Fortuna, California, Kelly Patton and Heath Cook run their skidder operation **PatCo Logging** and employ cutter Jeff Sanchez in the mud and rain of **Northern California**. Jason Green of West Coast Trucking hauls logs for them in his **1984 Peterbilt**.

FORTUNA CALIFORNIA

Fortuna, California is a town of of **11,926** in Humboldt County on the northeast shore of the **Eel River** roughly nine miles from the **Pacific Ocean**. The town was originally called **Slide Hill** in **1874** when founded, and changed to Springville for the town's **Springville Mill**. The town's name was changed to **Fortuna** in **1884**, which is the Spanish word for "chance." The town is surrounded by national, state and county redwood parks and is considered the gateway to the **Redwood Forests of Northern California**. The town is the northern entrance to the Avenue to the Giants - a scenic highway for **Humboldt Redwoods State Park**.



GEM CHAIN BAR

TOLL FREE 800-455-8471

(208) 983-0203
Fax: (208) 983-0213
93 Hwy 95 North
Grangeville, ID 83530

GEM'S NEW 404 HARVESTER LINE IS GETTING EXCEPTIONAL CUSTOMER REVIEWS

404 Harvester Bars

- Premium grade steel
- Replaceable external tip
- Highest visible bar in the market
- Currently available in 59cm, 64cm 75cm and 90 cm



"By far the best 404 harvester bar I have ever used."
~ Customer Quote

404 Rim Sprockets

- Currently available in 11, 12, 13, 14, 15 and 16 tooth with 25mm bore
- Trademark raised tooth design
- Tapered clean out holes
- Machined from solid billet material



GEM is a leading international manufacturer of 3/4" pitch bars and drive sprockets

**Come visit us
at the Oregon
Logging
Conference
Booth 278**

Rim Style 3/4 Drive Sprockets

- Maintenance free
- Longer wear life
- One piece
- Smoother running
- Less chain stretch
- Available in 7, 8, 9 & 10 tooth

3/4 Pitch Bars

- Bars available for most harvester and processors
- Multiple 3/4 double ended slasher/processor bars
- Custom orders are always welcomed



Visit our website at
www.gemchainbar.com

We Do Sawbar Repair • We Will Fix Your Twisted Bars

EQUIPMENT SITS AT THE READY in a rare moment of inactivity at the PatCo Logging site.



2004 HITACHI ZX350LL FORESTER w/2008 Waratah 624C Processor, 13,337 hours on ZX350ll, approx. 5,400 hours on 624C., heel rack, good undercarriage, runs & works well, located in Medford, Oregon.....\$199,500



LeTOURNEAU LOG STACKER, 60-ton, cab, 4x4, 12.7 liter Detroit Series 60, excellent tires, very clean, good history, from major pipeline job, 3 available.....CALL



1979 CAT D6D, SB w/tilt, CAT winch, good UC, recent hard bar, new radiator, shows 10,548 hrs.....\$35,000



2006 KOBELCO SK250 LOG LOADER, Jewell Shovel Logger Buildup, Jewell grapple, high & wide, 24" tracks, forestry cab, rock guards, good undercarriage, runs well, consignedm located in our yard, 12,624 hrs.....\$95,000



2004 MORGAN SX706SB, 6 WD, 3,103 original hours, very good tires, swing boom, 120" grapple open, full rotation, 8.3 Cummins @ 260 hp, hydrostatic drive, ROPS, cab, AC,\$112,500

MPi

EQUIPMENT

INCORPORATED

Call Chuck 24/7
530-221-6760

8537 Commercial Way
Redding, CA 96002

chuck@mpiequipment.com

www.mpiequipment.com

CONSIGNEE BY OWNER
Located in Philo, California



WASHINGTON 188 YARDER, Detroit 8V92T power, 4-axle carrier, standing skyline, good, clean unit.....\$200,000



2006 JD 759G FELLER BUNCHER, saw head, good undercarriage, JD engine, tilt cab, 12,000+ hrs.....\$100,000



2012 KOMATSU PC360LC-10, Tier 4, 30" dig bkt, 10'6" stick, 33 1/2" pads, lube system, cab guard, rear camera, AC, 2,182 hrs, priced to sell!!!!.....\$205,000



2007 CAT 328D LCR, smooth-edge clean up bucket, hydraulic QC, auxiliary hydraulics, 10'6" stick, very good condition, 6,148 hours.....\$140,000



2012 KOBELCO SK260-9, 48" bkt, standard stick, aux hyd, IT Tier 4 @ 176 hp, 2,201 hours, very clean.....\$140,000



YOUNG SORTING GRAPPLE, very little use, approx. 104" open.....\$3,900



NEW JD FS24 SAW-HEAD, 24" cut, 30 degree rotation, approx 8,380 lbs., fits JD 959J and others.....\$50,000



CAT

CERTIFIED REBUILD POWER TRAIN Plus

CAT 527 TRACK SKIDDER w/SWING GRAPPLE, CAB AND AC

The CAT Certified Rebuild Power Train Plus by Includes:

- New, Out of Crate CAT Engine
- Reconditioned Radiator, Including All Hoses, Clamps and Seals
- Rebuild Transmission and Torque Converter to New CAT Specs
- Rebuild/Recondition Steering Clutches, Brake Modules, Final Drives
- Recondition Equalizer Bar and Pin Bores; Install New Pins, Bearings, Seals
- Replace Pivot/Stub Shafts with New CAT Shafts
- Recondition Track Roller Frames
- Repair Track Guiding Guards at Swing Frames
- Replace Undercarriage w/All New CAT Components, Including Track Groups, Rollers, Idlers, 22" Track Shoes
- Reseal/Replace Power Train Hose
- Rebuild Hydraulic Pump
- Reseal U-Joints and Hardware
- Recondition C Frame
- Complete All CAT Engineering Updates as Needed
- CAT Power Train Warranty until January 2018 or 3,000 Hours

Additional Work Performed by Includes:

- New Air Conditioning System
- Repair Boom and Grapple, Including New King Post & Bearing, Repack Cylinders, New Pins & Bushings
- New Paint
- New Front and Rear Windows
- New Prolenc Snubber and Pins
- And Much More!

FOR MORE INFORMATION
CALL CHUCK
MPI EQUIPMENT, INC
530-221-6760

\$360,000



1998 CAT IT38G, good 20.5 radial tires, QC, third valve, good bucket, 20,856 hours.....\$56,500



2007 CAT D6N XL, OROPS, differential steer, very good System One undercarriage, CG.6 CAT Acert engine, rear screen, rear ripper, work lights, very good unit, 2,599 hours.....\$129,500



PROLENC SNUBBERS for skidders, in stock.....CALL

TOWTEM 100 CLAMSHELL BUCKET, approx 3 1/8" pin, 20 3/8" pin center-to-center, 12 5/8" stick width, 109" open tip-to-tip.....\$8,500



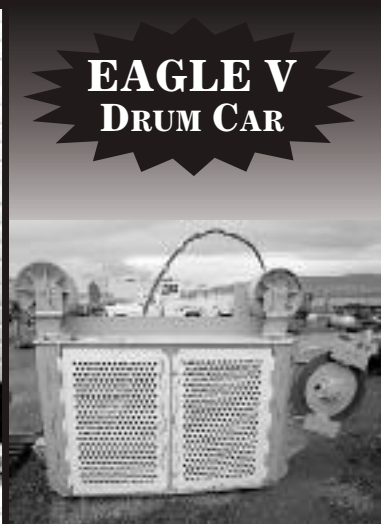
WITH RAINFALL A CONSTANT (except for the sunny day in this photo), just about every load that leaves PatCo's landing needs a little help to get going in the goo.



SUPER EAGLET EAGLE V & EAGLE VI



**SUPER
EAGLET**



**EAGLE V
DRUM CAR**



EAGLE VI

We also have Eaglets,
Eagle IV and Claws Available

EAGLE CARRIAGE & MACHINE

**Call Today
for a Demo!**

(541) 963-4646

Fax: (541) 963-3415

62500 Commerce Rd, La Grande, OR 97850

www.eaglecarriage.com

After Hours - Sam Baker

(541) 805-9504 cell

DOWN SIZING due to Power Plant Closure



2010 Peterson Pacific 5710C Grinder, aprox. 4600 hrs., Cat C27 1050 hp, *engine under full warranty until 9600 hrs.*, Cat [1] maintained since new, recent wear parts and hardfacing, excellent cond. **\$560,000**

More Equipment

1-~~2~~-Link-Belt 3400 Q2 Loaders, A/C, rehosed and new wiring harnesses, choice of 3 **\$55,000 ea.**

73 KW 4,000 gal. Water Truck, aux. pump, big cam 400, 9 & 4 trans, recent 46 rears and new steel frame rails **\$16,000**

10-42' to 45' Possum Belly Chip Vans, very serviceable **\$4,000 to \$10,000**

93 Oshkosh 6x6 Tractor, step frame, L10 cummins, 9 sp., 20k front axle, 46 rear axles, totally reconditioned 3 yrs. ago, excellent **\$45,000**

2-~~3~~-D300E Cat Articulated Dump Trucks, job ready **\$30,000 ea.**

Danzco Pull Thru Delimber, new motor and remote open and close knives, little use since total reconditioning **\$15,000**

Jewell Brush Grapples, 72 in. by 108 in., for 300 size machine **\$12,000**



1993 Osh Kosh 6x6 Truck Tractor, 120k Miles, L10 Cummins, 9spd 46k Rears, 20k Front. Truck was totally reconditioned when we stepped frame to approx. 50" to match highway trucks height. Truck has KW AG 200 Air ride suspension. Truck was used to shuttle chip trailers out of the woods and to the highway. Great Solid Truck!!



1998 Link Belt 3400Q, New Rotec, 1 season since New Hyd hoses, wiring harness, engine injectors, A/C, Dealer tune-up of engine and Hyd pressures



Morris Logging

Steve Morris 707-498-2101 • Jake Morris 707-498-8165

Office: 707-822-8537 • email: Steve@stevemorrislogging.com

GETTING READY FOR A LOAD, PatCo's Heath Cook lifts up the trailer of Jason Green's 1984 Peterbilt.



YOUR FORESTRY EQUIPMENT PARTNER



2005 Timbco 475EXL
S/N CW4C2641080405
24" 360 degree rotation head, new
bottom, 6,507 hrs., ready to harvest

\$188,900



2001 Cat 325B L
S/N 2JR03520
Hydraulic link thumb, welded
catwalks, 17,568 hrs., full length
forestry rock guards, four post
cab guard

\$62,000



2006 Cat 324D
S/N 0JLS00161
Waratah 622 processing head,
9,419 hrs., all in good working
order

\$170,000



2004 John Deere 3554
S/N 350018
18,875 hrs., good condition

\$64,000

N C MACHINERY



Call Gib Gilbert today at
253-606-2029

On approved credit. Offers expire March 31, 2015. All equipment subject to price change and/or prior sale. All units FOB current N C Washington branch location. Contact your N C Sales Representative for details.



HEATH COOK WITH ONE IN THE GRAPPLES and an eye for one to make a bonus turn before the next deluge hits and shuts them down because of mud.

KEY Work Wear



Hickory \$24⁹⁵ Shirt

- Heavy-duty cotton fabric
- Zipper or button front
- Long tails

Sale include sizes S to XL.
Big and Tall are \$3. extra

Logger's Jeans \$21⁹⁵



- Heavy-duty cotton denim
- Full cut
- Riveted suspender buttons
- Side tool pocket
- Large back pockets
- Double-stitched
- Zipper fly

Sale includes all sizes 30" to 42"
Sizes 44" & 52" are \$3. extra

MADSEN'S
SHOP & SUPPLY INC.
Centralia, Washington

☎ 360-736-1336
Information Calls
☎ 800-822-2808
Direct Order Line
www.madsens1.com

For Qualified Owners We Offer...

The Alternative

To High Worker's Comp Rates!

"In March of '04 I got hit... Hard! I spent weeks in the hospital and had months of Rehab.

*High Cascades Insurance and their **Alternative Plan** were there for me. My disability checks always arrived on time! You can count on High Cascades Insurance!"*

Paul Russell, Russell Resources, Winlock, WA

Call today for more information!
866-514-3356 Toll-Free!

360-274-6991 • 25 A Street SW, Castle Rock, Washington 98611

Wayne Lunday, LUTCF, CLU, ChFC

Aaron Lunday

Gail Mowrey, ACSR, CMSR, CRIS
Commercial Insurance Manager

HIGH CASCADDES
insurance

A full-service, True Multiline Agency
Dedicated to the Logging and related Industries
Licensed in WA, OR, CA (OD43750), ID & MT
Commercial Insurance, Personal Insurance, Life, Disability Income,
and Individual and Group Medical Plans

PatCo

(Continued from Page 7)

I had been playing phone tag with Heath Cook and his wife, Jodi for probably close to six weeks or better trying to set up a time when we would have some good weather, without a lot of rain, like that's going to happen in redwood country in November. Eventually the logging Gods smiled upon us and parted the clouds for about four days with no significant rain expected so I took off on one days notice, I would have forgot to take a change of clean clothes if I had one.

I called Heath after I finally got holed up at the Best Western and he gave me instructions as to how to get their site. Take highway 101, 3 miles to the Hydesville exit, etc... Being an old logger myself I had a trick or two up my hickory sleeve. Right after I passed the Murrish Market I

“PatCo is for Kelly PATton and Heath COok... PatCo, get it, took me while too, don't feel bad Heath Cook is a husky, bearded young feller of 34 and was born to log, he didn't find his calling, it found him and he knows it”

just followed the strips of redwood bark and the mud right to the landing and there they were, in the mud and lovin' it!

PatCo is for Kelly PATton and Heath Cook..PatCo, get it, took me while too, don't feel bad. Heath Cook is a husky, bearded young feller of 34 and was born to log, he didn't find his calling, it found him and he knows it.

He went right into the woods after high school and worked on the rigging and did some ground logging as well but preferred timber cutting to the din of machin-

partnered up with Kelly Patton to form PatCo. He did a stint for a few years as a ranch hand and a deer hunting guide but could not resist the 'call of the timber' and went back to his true calling, logging.

He lives in Fortuna with his wife Jodi, right hand lady and 3 kids Hayley, Brendan and Cooper aka Coop aka 'The Boss', he likes to go out loggin' with his dad and is a fair to middlin' shovel operator at the ripe old age of 5. If Heath had any spare time he'd just as soon be out blasting

poor little geese from the sky from his duck blind, which at this writing is submerged in water.

I'm not sure what hobbies Jodi has to occupy her spare time. She is in charge of the bookkeeping and all things 'office related' along with her original position of being a logger's wife and mother of three kids, that being said, I'd wager she doesn't have enough spare time to call her own worth crowing about, but you won't hear her complaining about it....she wouldn't have the time to complain even if she had it on her mind.

His partner Kelly Patton is a strapping, well spoken man of 43 years, residing in the Scotia area with his fiancé Shelby and his youngest daughter, Brittany. The elder of his two girls Morgan lives in Sa Diego.

(Continued on Page 16)
See “PatCo”



**ZENDER EQUIPMENT
COMPANY**

Contact: Kevin Zender (360) 319-7973

Rod Hansen (360) 520-6849

or email: kevin@zenderequipment.com

rod@zenderequipment.com

www.zenderequipment.com • Everson, WA

LOG LOADERS

2006 Cat 324 DFM, Pierce grapple, 11,000 hrs, 80% u/c, very good cond	\$135,000
2011 Cat 320DFM, Cat grapple, 3,800 hrs, like new cond.	\$199,500
2008 Cat 320DFM, Cat grapple, 7,900 hrs, new u/c, auto lube system	\$194,500
2004 Cat 320CFM, 23,000 hrs, good u/c, 2 available	\$80,000
2004 Cat 322C, w/Pierce grapple, forestry cab, rblt motor, 15,400 hrs	\$120,000
1997 Cat 320, w/Pierce grapple, 20,500 hrs	\$62,500
2013 Link-Belt 350X2, w/ 60" grapple, 980 hrs., plumbed for head	\$375,000
2006 Madill 3800C, w/60" Jewell, recent u/c & boom bushings, 12,000 hrs, xlent cond...	POR
2012 Madill 2850C, 4,600 hrs, like new cond	\$297,500
2004 Komatsu PC 300, 17,000 hrs	\$87,500
2008 JD 2554, Jewell grapple, 11,200 hrs., new u/c & rebushed & pump drive	\$185,000
2004 JD 2054, Pierce grapple, forestry cab	POR
1997 Link-Belt 3400Q, w/Pierce grapple, good u/c, 3 bar	\$55,000
1999 Kobelco SK 300, w/grapple, 15,000 hrs, recent pump	\$27,500
Jewell Rakes to fit 63" Jewell grapple, with stand	\$6,500

DELIMBERS

2006 JD 2054, w/06 Waratah 622B, rblt head, good u/c, recent pump, swing group, RB front	\$120,000
2008 JD 2054, w/08 Waratah 622B, recent rotex, pump, fuel system rads & bushed, 12,400 hrs	\$120,000
2005 JD 2054LL, w/05 Waratah 622B, only 7,000 hrs on unit, new pump and rblt head	\$140,000
2006 JD 2554, w/06 Waratah 624, 10,700 hrs, new motor & pump, good u/c, RB front	\$195,000
2005 JD 2054, w/05 Waratah 622B, 6000 hrs on pump and motor, recent drive motors on 622	\$65,000
2006 Hitachi ZX250, w/06 Waratah 624, 13,850 hrs, new pump, good u/c, nice cond., RB front...	\$120,000
2008 Link-Belt 330, w/07 Waratah 624, super good cond, RB front, 10,000 hrs ...	\$170,000
2010 Komatsu PC270, w/Pierce GP, 3000 hrs on head & 7000 on carrier, xlent cond	\$359,500
2013 Cat 325DFM, w/2013 Waratah 623, 2,900 hrs, c/w warrenty on L.L.	\$490,000
2002 Cat 325C, w/2002 Waratah 622	\$75,000
2001 Cat 330B, w/06 Waratah 624, rebuilt carrier, new pump, motor & u/c	\$205,000
2001 Cat 330B, w/08 Waratah 624C, 9,000 hrs, Cat rblt carrier, 9,000 hrs	\$179,500
2005 Kobelco SK290LL, w/05 Waratah 624, 14,500 hrs, recent pump, good u/c, nice clean log loader.	\$135,000
1998 TJ 608B, w/TJ 758 head, 9,000 hrs, good cond., Lots of parts	\$85,000
2007 Waratah 624, w/controls & comp., only 4000 hrs on head	\$77,500
2001 Waratah 622,	\$37,500
2009 JD 2554, w/DM 4550, xlent cond, 12,400 hrs	POR
2007 JD 2554, w/DM 4450, rblt motor and pump, nice limber	\$175,000
1995 Cat 325, w/DT 3000, recent drive motor & pump, good cond.	\$40,000

BUNCHERS

2005 Madill T2250B, rblt 22" Quadco 360, 12,000 hrs, new u/c & bushings, 2000 hrs on motor.	\$169,500
2011 Valmet 450FXL, Quadco 22" 360, complete new u/c, 6,000 hrs, xlent cond.	\$265,000
2003 Timbco 445, Quadco 22" low hrs on motor, pumps & u/c, 9,600 hrs	POR
2005 JD 735GL, Quadco 22" 360 hot saw, 75% u/c, 8,600 hrs, updated 360 manifold	\$130,000
2010 Quadco 22", 40 degree tilt, w/Timbco boom foot adapter	\$30,000

EXCAVATORS

1999, CAT 322B, c/w bucket, thumb & 52" grapple, heel, rblt motor, 13,000 hrs	\$47,500
---	----------

SKIDDERS & DOZERS & GRADERS

2010 JD 848H, dual frctn, 360 bunching grapple, 6,800 hrs, 500 hrs, on new motor good rubber.	\$135,000
2010 JD 748H, bunching grapple, dual frctn, rears 90%, front 30%, 1 set chains 5,200 hrs nice...	POR
2012 JD 648, dual frctn, 360 bunching grapple, 2,200 hrs, rubber like new, c/w chains.	POR
2005 Cat 525B, bunching grapple, w/ winch, new chains, 9,000 hrs, nice skidder ..	\$49,500
2001 Cat 517, w/swing boom, good u/c, recent paint, motor & trans have been rblt, 13,200 hrs	\$132,500
1999 Cat 527, swing boom, good u/c, sorting grapple, recent motor, trans, torque & u/c	\$135,000

YARDERS & SWING YARDERS

Madill 6240, w/Acme 15 car, xlent cond., good lines	\$425,000
Diamond D425, Cummins power, new lines and paint, low hrs., xlent cond	\$725,000
Washington 188, Cat power, rblt trans, good lines, tank mount, good u/c	\$190,000
1996 Kobelco 300, w/2 Pullmasters, guyline winch, ele. chokers, recent pump, 17,000 hrs	\$112,500
1999 Hitachi 300, w/tong tosser & 2 Pullmaster HL 25-4 drums, w/ Eaglet, nice yoder	\$145,000
Madill 171, w/Komatsu 400 hyd u/c recent new Cat motor & torque, rblt drums set, paint	\$700,000
T-Bird 6150, c/w 2 Eagle 4s, rigging, recent total rebuild of yarder, excellent cond.	POR
T-Bird TY90, T100HD, trl, 8 guylines 1 3/8", Cummins KTA 1150, new paint, xlent cond	\$450,000
T-Bird TY90, T100HD trl, 7 guylines 1 3/8", Cummins KTA1150, ready to log	POR
T-Bird TMY45, self prop on rubber, rblt 903 Cummins & torque, good lines, ready to log	POR
Skagit 737, T100 trl, 7 guyline 1 1/4", Cummins 855, Allison, water on all drums	\$169,500
Koller 301, w/Koller 2.5 clamping car, radios & rigging, on Ford 9000, Cummins 5.9	\$47,500
Washington 137 Slackliner, T90, self prop., Cat 3408, 8 guyline 1 3/8" yarder	\$160,000

MOTORIZED CARRIAGES

2008 Boman IV, Cummins power, w/bugs, smart box, 2,355 hrs	\$54,900
2005 Eagle 5, rebuilt new motor and other recent repairs	\$30,000

FIRETRAILERS, TRUCKS & TRAILERS

1985 Ford 9000, Cummins 400, 15 speed, 40 rears, Hendrickson springs, HD rails, 14' box, 185,000K	\$14,500
---	----------



PATCO SPEAKS highly of their old Case 9040 shovel as Heath Cook puts it through the paces clearing out the chute and decking logs.

Great Buys

2011 John Deere 2454 Delimber with Pierce 3348 upper, 4,430 hours, #019955.....\$368,000

2010 John Deere 2454D, with Pierce 3348 delimber, heavy duty forestry guarding, rock guards, travel motor covers, swivel guard, Portland, #019818.....**Call for Price**

2008 Tigercat LX870C, 24 in. single grousers, Quadco 2900 head, Portland, #018504.....\$289,500

2005 Link-Belt 210LX, w/LogMax 7000, 7200 hours, Spokane, WA, #018155.....\$185,000

2005 Link-Belt 240LXDHP, 7,704 hours, #020069.....\$179,000

2003 Timbco T475E, w/20,400 hrs, runs, as-is, Tacoma, WA, #019056.....\$85,000

2002 Timbco 445D Feller Buncher, single bar grousers, plumbed for processor and hotsaw, has Keto 600TS processing head, 12,657 hrs., Portland, OR, #020108.....\$129,500

Sales ▴ Rentals ▴ Service ▴ Parts

Portland | Eugene | Prineville | Seattle | Spokane

800.221.8512

800.342.6780

888.662.2940

800.622.8876

800.945.9168

Link-Belt
EXCAVATORS • FORESTRY
GRADERS • LOG SKIDDER

Tigercat

Kawasaki

TRIAD
MACHINERY
CONSTRUCTION
AND FORESTRY

www.triadmachinery.com

SCHMUNK'S TIRE CENTER

2650 MAIN
SPRINGFIELD, OR 97477

**"One of the Northwest's
Largest Chain Distributors"**



TOLL FREE **1-800-242-8473**

541-746-1604 • Ask for Dan

HOURS: 8 A.M. to 5:30 P.M.

Email: dan@schmunks.com

SKIDDER AND LOADER CHAINS

RING STYLE • 23.1 x 26 (9/16")

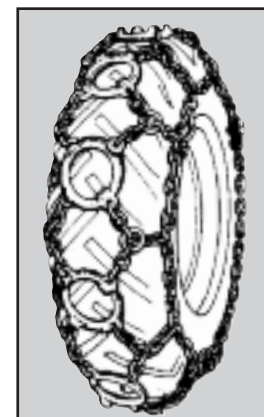
(1495^{.95}) PR.

CAM LOCK TRUCK CHAINS

SINGLES **(54^{.95})** • DUALS **(109^{.95})**

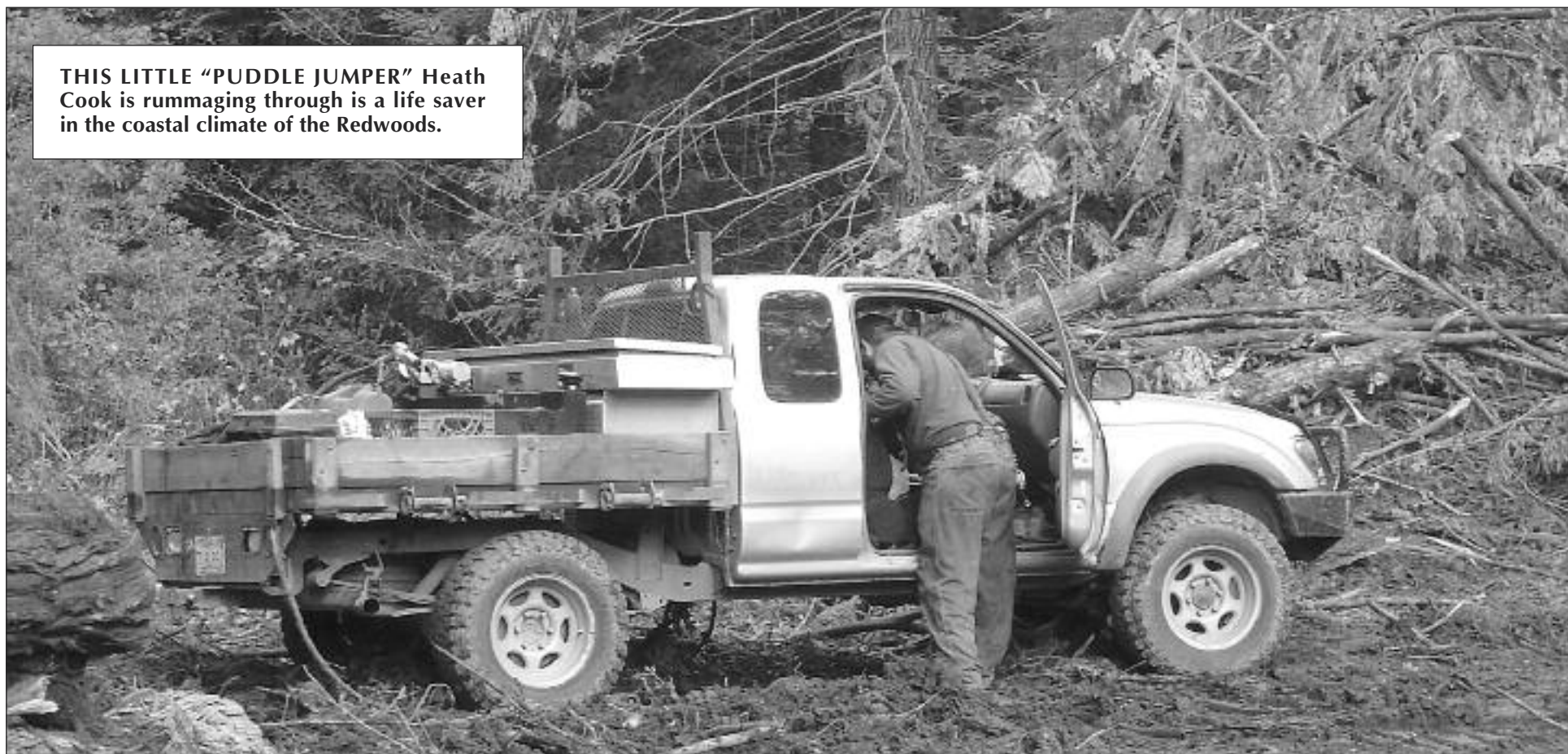
"Huge Inventory"

of Truck & Skidder Chain in other sizes available at Similar Savings
Ask about our Large Stock of Used Off-Road Tires



RING STYLE

THIS LITTLE "PUDDLE JUMPER" Heath Cook is rummaging through is a life saver in the coastal climate of the Redwoods.



WRECKING LOGGING EQUIPMENT

EXCAVATORS • CRAWLER TRACTORS • ROCK TRUCKS • LOADERS • GRADERS

Parting Out



2008 Deere 160DLC

Parting Out



1988 Cat D5H TSK

Parting Out



1998 Timbco 425C

Parting Out



2004 Deere 544J



Parting Out

1998 Cat 950G

Parting Out



2001 Cat 320CFM

Parting Out



1987 Cat 980C

Parting Out



2010 Komatsu 445FXL

Parting Out



1990 Deere 770BH

Parting Out



1997 Cat 322BL

FRALEY TRACTOR, Inc. WRECKING DIV.

(509) 884-7117 • FAX (509) 884-3959 • fti2@nwi.net • 1850 GRANT RD., E. WENATCHEE, WA 98802

CAT EXCAVATORS

E110B; E120B; 314C; 315BL;
320LL; 320BL; 320C; 322CL; 325L;
330BL; 345BL; 350L

CAT TRUCKS

D25D; D25C; D300E; D400D

CAT SKIDDERS

D5H; D4H; 515; 525; 525C

CAT SCRAPERS

615,621E

CASE

821; 9030B; 9040B; 9050; 9050B;
9060B

GROVE

RT745

LINK-BELT

210LX; 240LX; 3400 CII-Q; 4300 CII;
4300 CII-Q; 5800 CII-Q; 6000Q

KOBELCO

ED150; SK290LC6; SK200LC IV;
SK400LC IV; SK330

JOHN DEERE

120C; 160DLC; 590D; 200DLC;
230LC; 2554; 310SE; 330CLC;
450LC; 550H; 544J; 544G; 624G;
644H; 644G; 648GII; 690E; 710D;
750B-C; 744H; 753GL; 772BH;
850-850BLT; 992D-ELC

SAMSUNG

SE 350LC2

TIMBCO

T425B-C-D; T445B-C-D; T445EXL;
475D; 475EXL

TIMBERKING

TK722; TK1162

KOMATSU

PC120-6; PC130-6; PC138US-2;
PC150-5; PC160LC-7; PC200LC-6;
PC220LC-5; PC220-6E; PC300LC-5;
PC300HD-5; D155AX5; D355A;
D65E-6; WA 200-1; WA180-1; WA400-
1; WA320-1; WA180-3; WA250-3;
WA500-1

TIMBERJACK

608; 628; 1210B; 2628; 1270B

HITACHI

ZX27U; ZX120; EX150; EX160;
ZX200LL; EX200-5; EX60;
EX200LC3; EX220-3; EX270-1;
EX300LC1; EX330LC5; EX400LC3;
ZX450LC; EX550LC5; EX700;
EX750-5

VALMET

500T; 860; 892

VOLVO

A25C 6x6 Rock Truck; L330C;
L120E; L180C; L220E

WE BUY HEAVY EQUIPMENT FOR PARTS AND RESALE...CALL US!

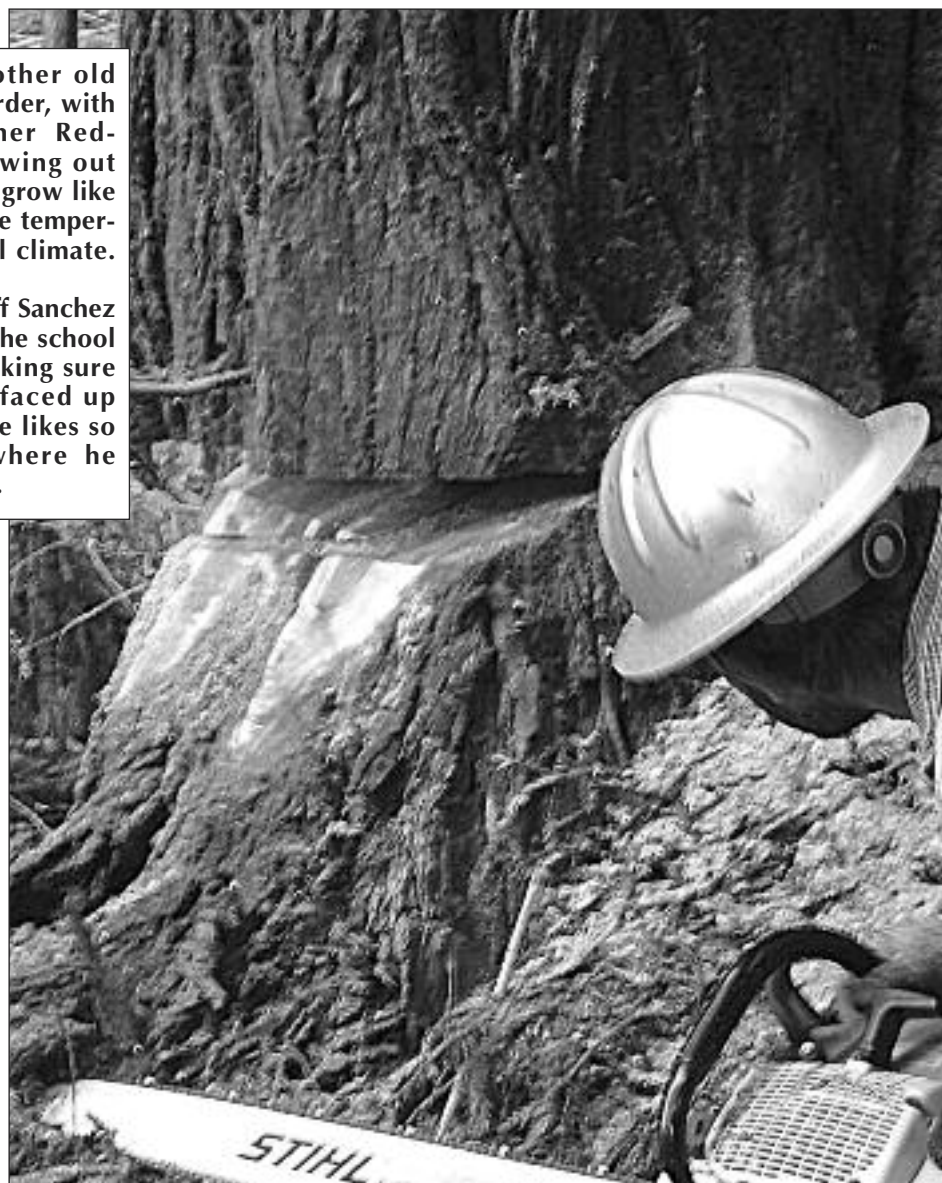
Visit us on the web at: www.FraleyTractor.com





LEFT: Another old springboarder, with yet another Redwood growing out of it, they grow like grass in the temperate coastal climate.

RIGHT: Jeff Sanchez sizing up the school marm, making sure he has it faced up the way he likes so it goes where he wants it to.



PatCo

(Continued from Page 13)

If he had any spare time he'd just as soon be out motocrossing, why, puzzles me, but he loves it. Along with being a partner in PatCo he owns and operates a 4,000 acre ranch in the area running 200 head of cattle, a firewood business and a sustainable timber harvest. I'm guessing he

probably doesn't do a whole lot of motocrossing these days.

The two men go together in the brush like peanut butter and jelly.

Rounding out their Spartan crew is their contract cutter, Jeff Sanchez age 35 and gets around like he was 25. Jeff is sort of a quiet guy unless you bring up fishing, then pull up a stump as

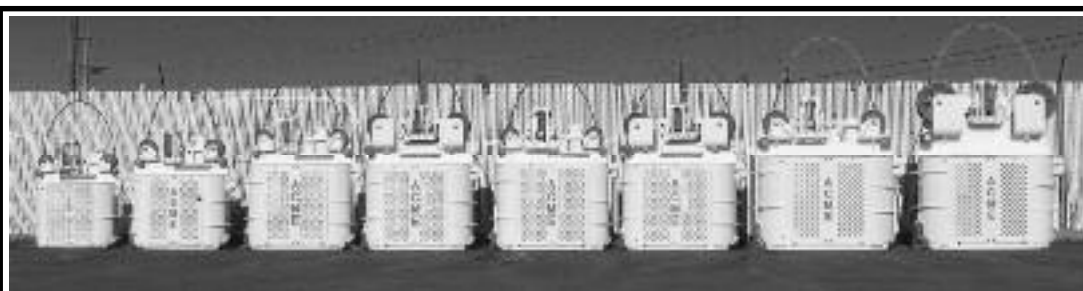
you will be at it for a spell.

They should name a river for him. The up and down, side hill terrain calls for Jeff to tip the trees where they can be accessed with the least amount of difficulty and minimal breakage, not always an easy task as you see a lot of 'school marm' and 'candelabra clusters' in redwood country and he must get the timber in

lead for the skidder. Being a thinning operation and working around standing timber doesn't make it any easier either....add a little mud and you have happy skidder operators.

It could be said that PatCo was kinda, sorta founded by accident, maybe fate or providence would

(Continued on Page 17)
See "PatCo"



90099 Prairie Road
Eugene, OR 97402
Phone 541-741-2200
Fax: 541-741-2212
After Hours: 541-554-9414
(Wayne)
www.acmecarriages.com



FORTRONICSTM LTD
FORESTRY ELECTRONIC CHOKER SYSTEMS



(Continued from Page 16)

be a more appropriate term, you decide. Kelly Patton had just procured his California timber operators license and was going to do some logging on his ranch for some supplemental income from the property and along came the Gulf War.

He felt it was his patriotic duty to serve his country and he was off on a six year stint in the Marine Corps from 1991 to 1997. Spent some time in the Corps myself in the '70's, Semper Fi.

When he returned home he bought some logging equipment and would have Heath Cook come out and do some timber cutting from time to time and he would log it himself.

Eventually in the course of things they got to talking last year and with the price of timber being better than it's been in a long time and the demand for logging contractors they decided to pool their resources, talent and contacts and formed PatCo Logging LLC and seem very happy with their decision.

They do most of their own mechanic work themselves unless it's a major malfunction they aren't equipped to deal with. Jeff does the cutting and Heath and Kelly can pitch in as called for,

(Continued on Page 19)
See "PatCo"



JEFF SANCHEZ
DISPATCHING
of more limbs,
he can almost
deck them when
he's cutting,
probably does
just that around
a new landing!



MS 661
Model Shown
(shown with
optional bar)

THE STIHL MS 661 CHAIN SAW

The MS 661 chain saw features an impressive power-to-weight ratio and STIHL M-Tronic™ engine management system, which electronically monitors ignition timing and fuel metering in any operating condition, including altitude. The MS 661 also features a wrap handle for improved maneuverability and delivers 20% greater fuel efficiency than the MS 660 with less vibration.

All prices are SNW-SRP. Available at participating dealers while supplies last. *The actual listed guide bar length can vary from the effective cutting length based on which powerhead it is installed on. © 2015 STIHL



To find a Dealer: **STIHLdealers.com**



NEW! MS 661 R C-M
CHAIN SAW
\$1299⁹⁵

28" bar*

Fuel-efficient chain saw for the demanding professional – especially suited for use with long guide bars

Features STIHL M-Tronic™ which compensates for changes in operating conditions, maintaining optimum engine performance

**DO YOU HAVE
PHOTOS YOU
WOULD
LIKE TO
SHARE?**

COMMENTS?

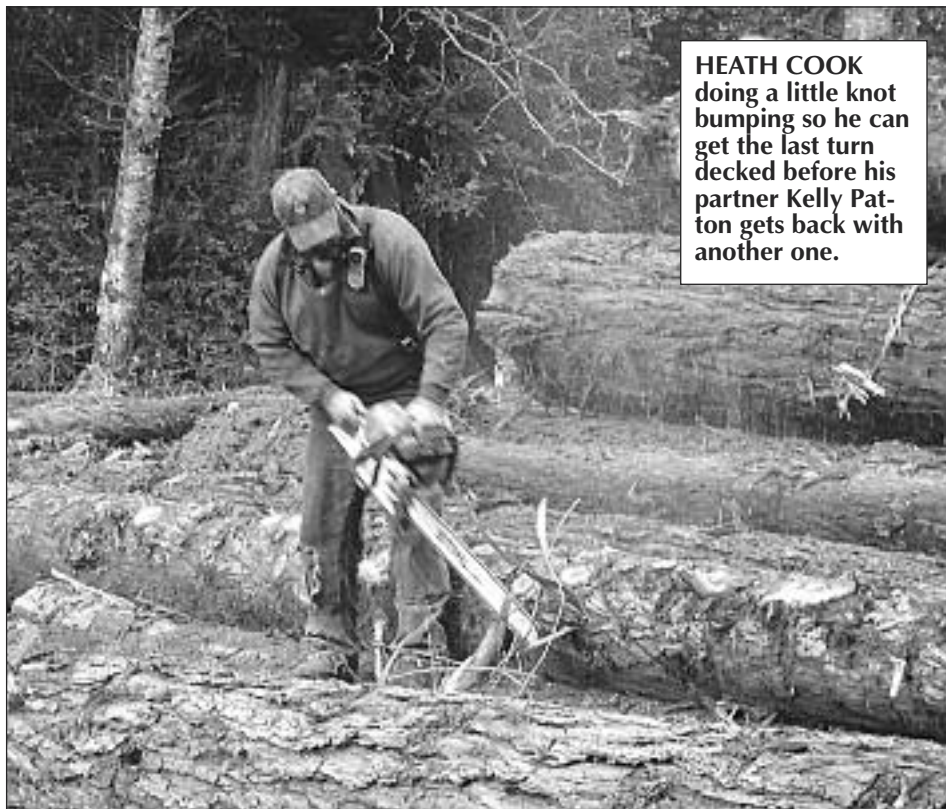
STORY IDEAS?

EMAIL US AT

brandonwaynehansen
@gmail.com



JEFF SANCHEZ is PatCo Logging LLC's cutter, and is sort of a quiet guy unless you bring up fishing, then pull up a stump as you will be at it for a spell.



HEATH COOK doing a little knot bumping so he can get the last turn decked before his partner Kelly Patton gets back with another one.



HEATH COOK IN HIS 'OFFICE' and home away from home doing some sorting on the landing.

TRENT FOGLIO

541-991-5519 • tntequipmentsales.com • Florence, Oregon

WE BUY, SELL AND REPAIR EQUIPMENT



2005 Komatsu PC220LL Shovel ...
.....\$100,000



2013 Cat 568 Shovel w/626 Waratah, 2600 hrs, single bars, like new\$600,000



Link-Belt 2800 Processor W/750 LogMax 13,000 hours\$55,000



Daewoo 290LC Delimber w/3348 Pierce Delimber\$65,000



2002 General 80-90 Ton Lowboy, 3x3x2, 9 wide, 20 ft. Well . \$150,000

**For repairs,
ITR undercarriage
quotes and
Deutz engine parts
call Tim
541-999-0832**

NORTHWEST EQUIPMENT TRANSPORT INC.



- 7 to 12 axle combinations
- Over 25 years experience

SERVING WASHINGTON, OREGON, IDAHO & MONTANA

**Don't walk your machines for miles,
Let our experience haul them from job to job.**

112 Bazinet Dr., Chehalis, Wa 98532

360-520-0201

(Continued from Page 17)

lean and mean in a rough and tumble game where the rules are never a constant and adversity served up in liberal doses on a daily basis.

For their trucking needs their go to man is Jason Green; West Coast Trucking also of Fortuna. Jason operates a 1984 Peterbilt and had 10 years behind the wheel hauling logs before buying his own truck, co-piloted by his young black Lab, Diesel, who can fetch rocks and sticks with best of 'em. He won't have any teeth left before long if he don't wise up, my Lab, Roy is dumber than rollin' pin.

They call on D. Gandy & Sons Trucking from time to time for a short logger and an extra truck when the need arises. On the day I called the driver was a young man, Aaron Lowe. I asked him if he was a son and he said no, "but the guy treats me like one".

Aaron has been with Gandy for 1 1/2 years and has 8 years herding logs down the road. Heath spoke kindly of the man Gandy as well....that's logging folks for ya, none better.

PatCo's forte and bread and butter are the small private jobs that the bigger outfits only take on if there's nothing else available.

They are a 'ground side', no yarder, they do a top notch job enlisting the service of an 1980's something Cat 518 grapple skidder, with winch, a late 1960's Cat D-5 also winched and a Case

9040 shovel handling the landing. Each of the crew can operate everything which helps break up the monotony of a long day and gives them the flexibility not every outfit enjoys.

Being a skidder side, the weather is probably the biggest burr in the saddle for PatCo, if a ground logger ever runs out of things to hate he'll always have mud, mud and limbs, they never have to look to far to find either one in the temperate climate of northern California in which the redwoods thrive, and I do mean 'thrive'.

I found it hard to believe that these trees were only around seventy years old, they grow like weeds. The terrain is the typical brushy, up and down coast logging and on a lot of the jobs Jeff, the cutter is called to work close to structures, roads, fences and power lines, but he takes it all in stride.

To quote Heath, "he's a perfectionist in everything he does". Jeff must also on occasion 'snipe' a stump or two as the redwood species, like a cedar doesn't fare to well when they hit a stump dead on and often will shatter and sometimes break right in half, sniping a stump will result in a glancing impact as opposed to a direct hit.

Back in the day when the huge ones were felled they would actually make beds for them composed of smaller trees cut where the giants were to be laid thereby reducing the impact.

(Continued on Page 20)
See "PatCo"



JASON GREEN'S 1984 PETERBILT may have a few years on her but goes down the road with the best of them. Here the truck is getting a load from the PatCo jobsite.



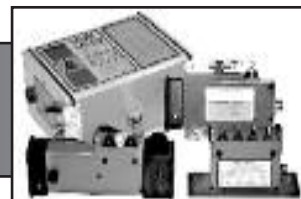
Full Service Shop
Full Service Rigging, Saw Repair & Work Clothing
www.LoggingSupply.com
Toll Free 1-800-488-3127



**ROTHENBUHLER
ENGINEERING**

HOME OF THE *Talkie Tooter*

MARK III WHISTLE CONTROL
now in the 72 MHz band, get away from
congested frequencies with a proven design



CARRIAGE CONTROLS
rugged radios that can control most
manufacturer's carriage from the ground or
the yarder

**Rugged, Durable,
Industrial Radio
Equipment since 1946!**

P.O. Box 708, 524 Rhodes Rd
Sedro-Woolley, WA 98284-0708
Telephone 360-856-0836
www.talkietooter.com

(Continued from Page 19)

This particular job they were on when I met them had a nice little 'incline' just below the landing which called for a little 'grapple winching' on the 518 while encumbered with a few of the riper logs, a few exceeding 3 feet in diameter and on the heavy side.

On a conventional skidder with a winch when you start spinning you just drop your turn and high tail it up the grade and then winch your turn up and head for the landing. When you're running grapples it becomes a bit more technical as one must drop the turn directly behind the skidder and proceed up the grade operating the grapples in such a fashion as to keep the weight of the turn on the ground and then pull it back to the machine.

The process must be repeated until you restore traction or get to the top of the grade, there is definitely a few tricks to it and is not as easy to do as it looks.

Most people who take on the challenge of running this sort of a logging operation have a little more experience in skidder and cat logging than does team PatCo and they would be the first to admit it, you would also be hard pressed to match their commitment and resolve to make a go of it and learn by doing and doing it right the first time.

It doesn't always work out that way but that's the best

teacher, experience and paying for your mistakes.

If a man runs a skidder for a living eventually the aforementioned Logging Gods will see it fit to test his mettle and conspire to slide his skidder downhill into a small tree, we used to call it, 'gettin' wrapped 'round a tree'.

The old D-5 sure was a blessing when Heath got pitched into a tree on my visit, I with held the photo's from publication out of professional courtesy and believe he'd do the same for me.

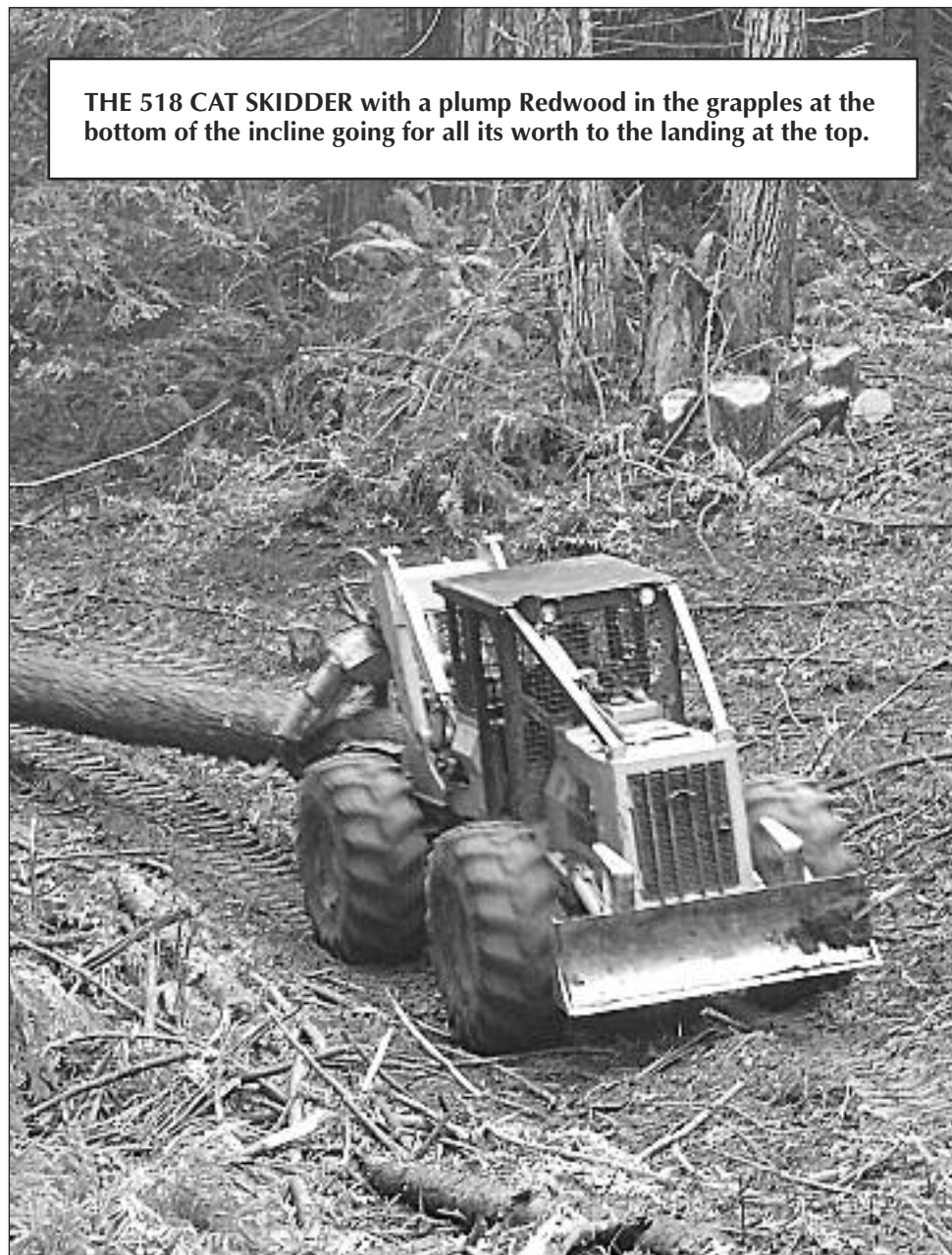
Only thing more humiliating is packing diesel out to your rig or as Heath puts it, 'the walk of shame'. Had I been there a tad earlier I would have bore witness to the ritual!

Such is logging, if you can't deal with adversity and Mr. Murphy's law you'd be better off out blasting geese or motocrossing. At present they're wintering out working on the Cat and getting ready for the 6 weeks of sunshine in Fortuna that will test them again, and they'll be ready, I've no doubt.

Here and there on the 20 acre site are relics from the past, old gray redwood stumps with the spring boards notches in them and a few new redwoods sprouting up from the decaying centers of each stump carrying on as nature does and always will, growing the new crop so little 'Coop' and his generation can go out and do some loggin' like their daddies did.



THE 518 CAT SKIDDER with a plump Redwood in the grapples at the bottom of the incline going for all its worth to the landing at the top.



End Greasing Frustration



NEW
GREASE
COUPLER

Grease goes in,
not on, the
machine!

Order Online:
locknlube.com

Lock and Lube
343 Dorchester Road
Lyme, NH 03768

(603) 795-2298

PROTECT, PRESERVE, WATERPROOF BOOTS AND CLOTHING



HEAVY DUTY LP

Extremely wet or chemical conditions require Heavy Duty protection.

Originally developed for wildland firefighters



LEATHER OIL

Dry weather ruins leather. It dries out. Prevent scuffs, cracks and dry rot with natural oils



WATER SHIELD

Waterproofs virtually everything. Coats, bibs, hats, gloves. Safe, Odorless, non-aerosol pump 8 or 16 oz

OBENAUF'S
Leather Preservatives

Peck, ID **208-486-6640**

I BUY LOG SKIDDERS



- Dozers
- Loaders
- Excavators

1-503-545-0007

BLAST FROM THE PAST

BY QUINN J. MURK FOR LOGGERS WORLD



21

LOGGERS WORLD MARCH 2015



Cat 977, good U/C, Winch & Arch
\$13,500
also have bucket & forks available



Cat 322L, with 3500 Denharco, new
Cat U/C **\$38,000**



**NEW
2012
Cat
527**

w/winch & arch, 3 available, 0 hours
\$338K each



330L Parting Out

**Link-Belt 2800 Quantum Log
Loader**, 11K hrs, new engine,
47,000



Deere 3554, Jewell grapples,
5,000 yard hrs, excellent condition
\$239,000



D6C, with angle blade **Parting Out**



Log Max 9000, 18K hrs new feed
roll motors **\$19,000**



Cat 525 - Parting Out



Prentice 600B carrier mount log
loader, runs great **\$17,500**

**EL 300
Parting Out**



DUKES
PARTS & EQUIPMENT
509-952-9223

204 Butterfield Rd., Yakima, Wa 98901 Shop: 509-469-9420

Check us out online: www.dukesheavyequipment.com

A very early model of a small single-drum donkey has pulled in a nice fir log. Brought to the foot of a loading ramp, it will be par-buckled up onto a rail car. A slack line laying on the rollway is evidence of that. This single cylinder donkey with a small boiler powers a very low geared drum. This old picture was taken with a glass plate as film as we know it had not been developed yet. I am convinced that it has been printed in reverse or backwards. I do not know of any yarders manufactured that operated from the right side. In this view, the friction lever would have to be pushed to engage it, and in doing so it would be almost impossible for the donkey puncher to use the throttle lever. If you look at this picture in a mirror, the friction lever would be pulled to engage it – which makes much more sense.

This late 1890's photo is from the Quinn J. Murk collection.



Well, if you know anything about old yarders you will note that this one has a really nice roof, and it is not a new machine. Look at the sled; it's been around a bit. Tarps rolled up over the donkey puncher and woodcutter can be dropped in foul weather to keep the brakes dry. Also, did you notice the steam head by the puncher's left knee? This is a two speed machine known as a "sledgehammer." When he opened the lever valve and popped the steam to her, the shift was instantaneous and hard – everybody around her knew things were going to happen. Going from high to low, this old girl was going to hump up and pull; if going from low to high the hard pull was over, and the logs were coming in. Whoever owned this yarder was obviously running a first class operation, and he took pride in his equipment.

This photo is from the Quinn J. Murk collection.



CORRECTION: This photo to the left was ran in a previous issue of Loggers World with the wrong caption, here is the correct caption:

Back in the days of bull teams and horses, wasn't life a cushy dream? Everybody and everything got to work hard from "can see to can't see" which meant from first thing in the morning to the last thing at dusk. Twelve hour days or more were the norm back then, and you usually got the pleasure of walking to and from the job site in the dark on top of that. If the work required a hard, steady pull, bulls provided the needed power. They also did not require the higher quality feed and were easier to care for than the horses. Bulls were slower but easier to have around. Hard working horses needed more and better feed and grains. They also needed better barns in order to keep them around. However, they were faster than the bulls, which is why they were pulling the wooden railway tram car. Being loaded either by "end hooks" or the "par buckling" method, the logs were being loaded two or three high on the wooden car.

This 1890 Washington photograph is from the Quinn J. Murk collection, Siletz, Oregon.

DYNA PRODUCTS

HYDRAULIC FIREWOOD PROCESSORS

**See us at
SCLC, OLC, RRLC,
and ILC**

DUNLAP ENTERPRISES
(209) 532-4974
jdunent@aol.com • Soulsbyville, CA

Dyna Firewood Processors
Sale, Rent, Hire
Call for More Information!

**CONTACT
QUINN VIA
EMAIL**

ktmurk@
centurylink.net

Or by Mail at:
P.O. Box 319
Siletz, OR 97380



As We See It.... EXPERIENCE MATTERS

-By Mike Albrecht

It is a distinct privilege to address all of you great loggers. I'd like to start my comments with an abbreviated version of a speech I've written for President Obama, or Forest Service Chief Tom Tidwell, or anyone in a high ranking office that can muster an audience. It goes something like this:

"America is truly a country of great achievement. Nothing underscores this more than a quick review of some facts. America leads the world in food production. Today, U.S. farmers export 45% of their wheat, 34% of their soybeans and 71% of their almonds. In 2011, U.S. farmers produced \$388 billion of goods, with approximately one third of that being exported. America truly helps feed the world.

In the 1970's, America decided it was time to shed its reliance on foreign oil. The American people said, "Enough is enough," and Washington was listening. Today America is undergoing a revolution in energy production, a revolution so dynamic that the International Energy Agency predicts that the U.S. will surpass Russia and Saudi Arabia as the world's top oil producer by the end of this year.

America's pride of achievement is showcased in so many other fields, including space exploration, medicine, and athletic prowess.

Today I'd like to issue a challenge to an industry that helped build this country, an industry that produced the railroad ties that linked our country together, and provides the raw material that builds our homes, our schools, and our offices. Today, this great industry, the timber industry, is lan-

guishing. America leads in exporting so many goods and services to the world, and yet is now the second leading importer of lumber in the world (we were number one up until 2012, when China became the leading importer). California, the Golden State, blessed with over 33 million acres of forestland imports over 75% of its wood products.

How can this be? One third of our nation is covered in forestland. We have arguably the best growing climate for timber production in the world. Our timber industry is second to none when it comes to technological know-how and work ethic.

When the American people put their heart and soul into something, they achieve it. It's time to bring homegrown timber products back to our hardware stores and lumberyards. If we all work together, America can become a leading exporter of timber-related goods and services. We should not accept anything less."

If that speech was given, could we rise to the challenge of retooling and expanding our industry? Does the United States have access to enough homegrown timber to feed our annual lumber appetite of 40 - 65 billion board feet a year? The answer is, "Yes we do - in spades."

According to data from the Western Wood Products Association and the Forest Service Inventory and Analysis Group, the standing net volume in America's forests is approaching 2.25 trillion board feet. Annual growth on this inventory is approximately 150 billion board feet. This easily meets our nation's lumber demand. The truth is, the United States has 750 million acres of forestland growing enough timber

to meet our own lumber needs, export billions of board feet to other countries, while continually adding inventory to our forests.

In addition to prodigious timber growth, two-thirds of our nation's drinking water comes from our forests. On average, once acre of trees annually consumes the amount of carbon dioxide equivalent to that produced by driving an average car for 26,000 miles. That same acre of trees also produces enough oxygen for 18 people to breathe for a year.

Economically, there is no better investment than forestry. Every \$1 million invested in forestry creates approximately 40 jobs. That is almost double the next highest investment sector of mass transit and freight rail construction where \$1 million invested creates approximately 22 jobs.

Unfortunately, these facts are not what I hear talked about at the landing, at coffee shops, or at conventions and meetings. Instead, it's usually acres burned, mills closed, government regulations, environmental lawsuits, and jobs lost. The Associated California Loggers just finished our annual meeting. At an evening banquet, my wife, Vicki, looked around the room of 250 plus folks and said, "Wow, there are a lot of young people here." There were indeed young loggers and their wives, many sitting with their moms and dads.

These young people are hungry for inspiration, and our association, the American Loggers Council, must remain the prime source of that inspiration. We need to talk more about acres harvested, mills reopened, new laws to support our industry, and environmental groups that support our goal of healthy forests.

For the older generation, our charge is to inspire this new generation of loggers to continue not only to work hard and smart, but to un-

derstand and promote the proud and positive facts about our forests and our industry. Let's face it, if we are going to rejuvenate America's timber industry, it will be on their watch. With their help, America can trade the stigma of being a leading lumber importer with her overgrown forests burning to the ground, for the pride of supplying lumber to the world.



Mike Albrecht is co-owner of Sierra Resource Management, Inc., located in Jamestown, California. Mike was selected as the American Loggers Council National Logger Activist of the Year in 2014. For more information, please contact the ALC office at 409-625-0206 or e-mail at americanlogger@aol.com.

The American Loggers Council is a non-profit 501(c) (6) corporation representing professional timber harvesters in 30 states across the US. For more information, visit their web site at www.americanloggers.org or contact their office at 409-625-0206.

**SUBSCRIBE TO
LOGGERS WORLD
& LOG TRUCKER
MAGAZINE!**

Only \$25 per year!

Subscribe online at:
www.loggersworld.com

Click the "subscribe" button at
the top of the page
or call 360-262-3376 and leave
a message

USED PARTS FOR

CONSTRUCTION & LOGGING MACHINERY

Crawlers, Loaders, Trenchers, Excavators,

Backhoes, Skidders, Skid-Steers,

Engines and Transmissions

"Rely on our Experience - Est. 1967"



1-800-626-6046

**Schaefer
Enterprises**

4535 St. Rt. 3 N. • P. O. Box 136, Wolf Lake, IL

www.sewlparts.com - parts@sewlparts.com

Most Major Credit Cards Accepted

LOGGING EQUIPMENT TECHNICIAN WANTED

- ✓ **Must have minimum five years experience from John Deere or CAT Dealership.**
- ✓ **Must have knowledgeable background on all Logging Equipment including but not limited to Timbcos, Delimbers, Dangle Head Log Processors, Skidders, & Log Loaders.**

Pay Scale \$30.00 to \$50.00 per Hour, wage will be determined upon interview. Independent Technicians with Service Truck are encouraged to apply.

Location - Burney, CA

Please Email tubitenterprises@gmail.com or call (530) 335-5085 for more information

CROWLEY EQUIPMENT, INC.

(541) 688-5924 FAX: (541) 688-0704

MIKE (541) 954-7643 • ERIC (541) 206-2252 • DAN (541) 914-9222



2002 Cat 525B
W/Esco Swing Boom,
6,350 Hrs.
\$140,000



2006 Hitachi ZX250
w/rebuilt 2006 Waratah 622B,
11,900 Hrs.
\$175,000



2000 Cat 320B
13,000 Hrs., W/Timbermaster
Package
\$125,000



2005 Link-Belt 290LX
\$65,000



2008 Link-Belt 240LX
7,780 Hrs.
P.O.R.

LOG LOADERS

- 2013 CAT 325D
- 2012 CAT 568D
- 2009 CAT 325D
- 2006 CAT 330C
- 2003 JOHN DEERE 270
- 2012 KOMATSU PC200
- 2005 KOMATSU PC300
- 2005 KOMATSU PC220
- 1998 THUNDERBIRD 1240
- 1997 HITACHI 300 W/3 WINCHES
- 2014 LINK-BELT 350X2
- 2012 LINK-BELT 350X2
- 2008 LINKBELT 240LX
- 2007 LINKBELT 290LX
- 2005 LINKBELT 290LX
- 2004 LINK-BELT 240LX
- 2003 LINKBELT 290LX
- 2000 LINK-BELT 3400Q
- 1985 LINK-BELT 3400 ON RUBBER

PROCESSORS & DELIMBERS

- 2013 CAT 320D RB W/LOG-MAX 7000XT
- 2006 CAT 325C W/2010 WARATAH 624C
- 1998 CAT 322B W/PIERCE 3345
- 1998 CASE 9040B W/PIERCE 3345
- 2011 JOHN DEERE 2454D W/PIERCE 3348
- 2009 JOHN DEERE 2954D W/2010 WARATAH 623C
- 2008 JOHN DEERE 2954D W/2010 WARATAH 624C
- 2007 JOHN DEERE 2554 W/DM4550
- 2006 JOHN DEERE 2054 W/WARATAH 622B
- 2006 HITACHI ZX250LL W/WARATAH 622B
- 2005 KOBELCO SK250 W/WARATAH 622B
- 2008 KOMATSU PC270 W/2013 PIERCE GP HEAD
- 2006 KOMATSU PC220 W/PIERCE 3348
- 2012 LINK-BELT 290X2 W/WARATAH 623C

PROCESSORS & DELIMBERS *Cont.*

- 2008 LINKBELT 330LX W/WARATAH 624
- 2000 LINK-BELT 3400Q W/PIERCE 3345
- 2004 TIMBERKING 732 W/WARATAH 622B
- 2004 MADILL 1800 W/WARATAH 624
- 2005 MADILL 2800B W/WARATAH 622B
- 2008 VALMET 941.1, W/370.2 HARVESTER
- 2006 VALMET EX10 W/370.2 HARVESTER
- 2005 VALMET EX10 W/370.2 HARVESTER

FELLER BUNCHERS

- 2012 JOHN DEERE 959K
- 2007 TIMBCO T445EXL
- 2004 TIMBCO T-445EXL, W/BARSAW
- 2003 TIMBCO T-425D W/BARSAW
- 2002 TIMBCO T-445E
- 2002 TIMBCO T475E
- 1999 TIMBCO T425D W/360° QUADCO HOTSAW
- 2007 TIGERCAT L870C
- 2007 TIGERCAT LX830C
- 2005 TIGERCAT L870
- 2001 TIMBERKING 1162

SKIDDERS / DOZERS

- 2007 CAT 525C
- 2002 CAT 525B W/ESCO SWING BOOM
- CAT D6C
- CAT D8K
- CAT D7E W/WINCH
- CAT D7F W/ESCO SWING BOOM
- CAT D7G ARCH/WINCH
- CAT D7H W/RIPPER
- CAT 977L
- 1986 FIAT ALLIS 14C W/ARCH, WINCH
- 2013 JOHN DEERE 848H
- 2010 JOHN DEERE 848H
- 2005 JOHN DEERE 748G3

EXCAVATORS

- 2005 JOHN DEERE 135C
- 2001 JOHN DEERE 230 RB
- 2000 KOBELCO ED180
- 1998 KOMATSU PC200

CHIPPERS / GRINDERS

- MORBARK 30RXL
- 2006 PETERSON PACIFIC 4710B

YARDERS

- 1998 THUNDERBIRD 6150
- THUNDERBIRD 6255
- THUNDERBIRD 6240
- 2000 CAT 320B W/TIMBER-MASTER
- MADILL 071
- SKAGIT 737
- SKAGIT 739

WASHINGTON 188

WASHINGTON 1088

MISCELLANEOUS

- 2013 PIERCE GP HEAD BOMAN MARK4
- (2) PULLMASTER HL25-4 WINCHES
- 2003 JCB 214
- MEDFORD LOG FORKS
- 1997 TIMBCO TF815B
- TIMBCO BARSAW
- 1994 VALMET 860 FORWARDER
- 2003 WARATAH 624
- 2001 WARATAH 624
- THUNDERBIRD TSY-155 PARTS
- 2006 TIMBERPRO TF840
- 2004 TIMBERPRO 820
- 1996 TIMBERJACK 1210 FORWARDER
- CAT 977L
- 1979 FIAT ALLIS FRONT END LOADER
- 2005 PETE SHOP TRUCK
- ATLAS COPCO 185CFM AIR COMPRESSOR
- YOUNG YARDER GRAPPLE PARTING OUT: DM3500
- PARTING OUT: THUNDERBIRD 1236
- PARTING OUT: 1988 KOMATSU WA600



2007 Tigercat LX830C
8,500 Hrs., Barsaw & Hotsaw
P.O.R.



2012 Cat 568
5,000 Hrs.,
P.O.R.



2013 Cat 320D RB
W/Logmax 7000XT, 1,106 Hrs.
\$350,000



2006 Cat 325C
W/2010 Waratah 624C
\$230,000

www.crowleyequipment.com



Skagit 739
Rebuilt KT1150, Trani.
Call for More Info.



2007 Link-Belt 290
w/Waratah 622B
12,000 hrs
\$180,000



2013 Pierce
Grapple Processor,
GP Head, 3,500 hours
P.O.R.

Skagit 737
T100HD
Call For
More Info.





Summary Judgment....

Minnesota Awakens a Sleeping Giant

by William Perry Pendley

The degree to which a state may interfere with commerce among its neighbors is now before the U.S. Court of Appeals for the Eighth Circuit in St. Louis, Missouri. At issue is global cooling/global warming/climate change/greenhouse gas legislation adopted by Minnesota—one of the Nation's most progressive, liberal, politically correct jurisdictions—ostensibly to save its constituents from the evils of coal and the carbon dioxide generated when creating electricity. The constitutional doctrine upon which the suit—filed by Minnesota's western neighbor North Dakota and others—turns is the “dormant Commerce Clause,” an expression that fails to convey completely the principle's origin, vitality, or constitutional significance.

As every school child once knew, because the Articles of Confederation vested power to regulate commerce in the States and not Congress, commercial warfare erupted as, in Justice Joseph Sto-

ry's words, “each state would legislate according to its own [economic and constituents'] interests” The economic Balkanization that resulted was catastrophic, “threaten[ing] the peace and safety of the Union.” Therefore, when drafting the Constitution, the Framers granted Congress the power to “regulate Commerce with foreign Nations, and among the several States, and with the Indian Tribes[.]” Implicit in that grant—but dormant only as to inaction by Congress—were limits on state power to affect interstate commerce.

The Supreme Court of the United States, however, did not slumber; thus, over the decades, while recognizing the right of states to engage in “novel social and economic experiments,” the Court interpreted the dormant Commerce Clause to bar state legislation that “discriminates against or unduly burdens interstate commerce and thereby ‘imped[es] free private

trade in the national market place....” Therefore, when “legislation nominally of

local concern is in point of fact aimed at interstate commerce, or by its necessary operation is a means of gaining a local benefit by throwing the attendant burdens on those without the state[,]” it runs afoul of the dormant Commerce Clause.

In determining whether state legislation violates the Commerce Clause, the Supreme Court asks: first, whether the law has the “practical effect of extraterritorial control of interstate commerce[;]” second, whether the law “clearly discriminates against interstate commerce in favor of in-state commerce[;]” and third, whether the law “imposes a burden on interstate commerce that outweighs any benefits received[.]”

Enter Minnesota's Next Generation Energy Act of 2007 (NGEA), which sets Draconian goals for greenhouse gas reductions; establishes one of the nation's most aggressive array of renewable-energy standards; and provides that “no person” may contribute to or increase “statewide power sector carbon dioxide emissions.” Thus, the law directly affects the electric power industry—including generation, transmission, and distribution of electricity outside Minnesota—that is regulated by the federal government and operated cooperatively to ensure hourly accuracy as to supply

and demand in such a manner that neither the supplier nor the consumer knows the destination or origins of the electricity it generates or uses.

Little wonder the Minnesota federal district court that heard the case had no difficulty, once it brushed aside assertions by Minnesota's attorneys that the law did not mean what it said, ruling that NGEA's “plain language applies to power and capacity transactions occurring wholly outside of Minnesota's borders[,]” and therefore is “a per se violation of the dormant Commerce Clause.” Both sides filed cross appeals and, days ago, the Montana Coal Council, a non-profit group whose members supply a large portion of the coal that generates 44 percent of Minnesota's in-state electric power, filed a friend of the court brief in support of North Dakota urging that the federal district court's ruling be upheld.

Given the case's significance especially in light of efforts by various states to adopt legislation similar to Minnesota's NGEA, there is a strong likelihood the Supreme Court will hear the matter. If not, however, another case draws near; Wyoming recently contested Oregon's denial of a Columbia River terminal permit to export its coal to the Far East.

Mr. Pendley, a Wyoming attorney, is President and Chief Legal Officer of Mountain States Legal Foundation and a regular columnist in Loggers World.



77th Intermountain LOGGING CONFERENCE & Equipment Show

April 8-10, 2015

Maribeu Park Hotel & Convention Center
Spokane Valley, Washington

Program Theme:

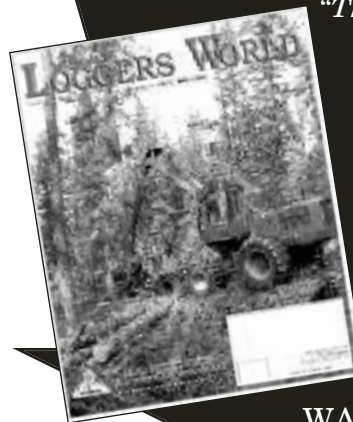
“Embracing Change”

Keynote Speaker: Bill Imbergamo

For More Information Call:
208-245-3425

www.intermountainlogging.org

SUBSCRIBE TODAY! LOGGERS WORLD



*“The Logger's Magazine,” is
concerned with what
concerns loggers*

12 Issues – 1 Year Subscription

\$25⁰⁰

WA Residents pay \$27.40 w/tax
Inside U.S.A.

**Offer expires
December 31, 2015**

LOGGERS WORLD

Send your check or Money order to:
LOGGERS WORLD LLC
P. O. Box 1631
CHEHALIS, WA 98532

☐ \$25.00 for 1-Year Subscription ☐ \$50.00 for 2-Year Subscription
WASHINGTON RESIDENTS PAY \$27.40 & \$54.80 w/SALES TAX

NAME:.....

ADDRESS:.....

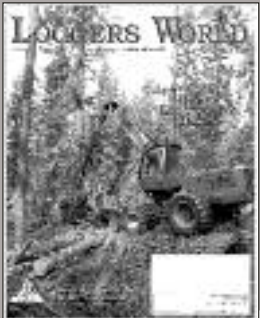
CITY:..... STATE:..... ZIP:.....

PHONE: ().....

(ALLOW 3 WEEKS FOR DELIVERY OF FIRST ISSUE)

SUBSCRIBE TODAY! LOGGERS WORLD

*"The Logger's Magazine," is
concerned with what
concerns loggers*



12 Issues – 1 Year Subscription

\$25⁰⁰

WA Residents pay \$27.40 w/tax
Inside U.S.A.

Offer expires
December 31, 2015

LOGGERS WORLD

Send your check or Money order to:
LOGGERS WORLD LLC
P. O. Box 1631
CHEHALIS, WA 98532

○ \$25.00 for 1-Year Subscription ○ \$50.00 for 2-Year Subscription
WASHINGTON RESIDENTS PAY \$27.40 & \$54.80 w/SALES TAX

NAME:.....

ADDRESS:.....

CITY:..... STATE:..... ZIP:.....

PHONE: ().....

(ALLOW 3 WEEKS FOR DELIVERY OF FIRST ISSUE)

SHOW AND SELL

Send your Black and White or Color photo and a description of what you are selling (try to keep it within 20 words - 1 item per ad) and we'll publish it in Show & Sell for just \$100.00. Mail (or email to logworld@aol.com) your information to Loggers World LLC, P.O. Box 1631, Chehalis, WA 98532. Deadline is 5th of the month preceeding publication.



Heavy Duty Mechanics Trucks, factory direct pricing, overbuilt, Inc. Our name says it all. Call Jack Harriman at 605-421-0495 Cell x



Dyna Firewood Processor, cut, split, load , a cord/hour; \$15,000
209-532-4974 jdunent@aol.com Y



2015 Ford F-550, 4x4, equipped with a Feterl 11 ft. Body, 6,000 lb. Crane, 40 CFM Air Compressor, Concealed Door Hinges, Tool Drawers and LED Lighting.
Call 855-498-0610. W

ADVERTISE

YOUR ITEMS IN THIS SPACE
ONLY....

\$100⁰⁰

CALL
1-800-462-8283



2010 Valmet 445FXL, S/N A10001, Hours: 5750, GN Roy #2252C 360° 22" Felling head, Comes with 3 sets of Quadco teeth and 12 holders, \$250,000 FOB Seattle 907-746-3144 Y



Low Hour GFT80 Final Drive Assemblies, Timbco 445, Valmet 445, Timberpro, Cat/Timber King, Prentice Reasonably Priced,
Call Kevin 877-563-8899 or
Cell 250-565-5222 Y



1999 JD 330LC Processor w/ Waratah 624 Head. New Engine, New Hyd Pumps, New Radiator, New Oil Cooler. Ready to Work. 17,074 hrs. \$80,000. Mike (970) 846-3478 Y

ADVERTISE

YOUR ITEMS IN THIS SPACE
ONLY....

\$100⁰⁰

CALL
1-800-462-8283



Timberjack 933C Clambunk Forwarder. Also comes with log bunks and dump box. Runs excellent. \$40,000 360-520-0201 Y

COMING EVENTS

MARCH

19-21


REDWOOD REGION LOGGING CONFERENCE

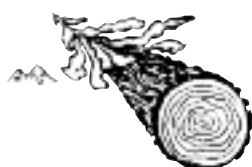
REDWOOD ACRES FAIRGROUNDS
EUREKA, CALIFORNIA
FOR INFORMATION CALL: (707) 443-4091

14-15


WCLA ANNUAL MEETING

THE TULALIP RESORT CASINO
TULALIP, WASHINGTON
FOR INFORMATION CALL: (800) 422-0074
Ext 103

APRIL

8-10


INTERMOUNTAIN LOGGING CONFERENCE & EQUIPMENT SHOW

MARIBEAU PARK HOTEL
& CONVENTION CENTER
SPOKANE VALLEY, WASHINGTON
FOR INFORMATION CALL: (208) 245-3425

29-May 1


OLYMPIC LOGGING CONFERENCE

FAIRMONT EMPRESS HOTEL
VICTORIA, BRITISH COLUMBIA
FOR INFORMATION CALL: (360) 202-7014

SEND EVENT NOTICES TO: Publisher, Loggers World LLC, P.O. Box 1631, Chehalis, WA 98532-8425. Please include your event's symbol. Items used at discretion of the publisher. **Deadline** for April 2015 issue: MARCH 9th.



Call (800) 422-0074 or join
online at www.loggers.com

Membership Highlights...

- Master Logger Program (exceeds SFI logger training requirements)
- Monthly Springboard Magazine
- First aid/cpr and pilot car training
- Log A Load For Kids® - giving campaign for Children's Hospitals
- WCLA Insurance Agency - top coverage for the timber industry
- Employee benefits programs through WCLA's benefits partner: Kibble & Prentice
- WCLA Claims Management Program - providing the benefit of savings on L & I premium costs, improved safety standards and reduced claims costs

Advertiser's Index

ACME MANUFACTURING	16	NORTHWEST EQUIPMENT TRANSPORT, INC.	18
CASCADE TRADER.....	4, 5	OBENAUF'S.....	20
CASHMAN EQUIPMENT.....	3	OLIVER HAMMER CLOTHES SHOP	5
CATERPILLAR	3	OREGON TRACTOR TRADER....	20
CC HEAVY EQUIPMENT INC. ...	7	PACIFIC FIBRE PRODUCTS, INC.	5
COWLITZ RIVER RIGGING.	19	PETERSON	3
CROWLEY EQUIPMENT INC	25	REDWOOD REGION LOGGING CONFERENCE	21
DUKE'S EQUIPMENT	21	ROTHENBUHLER ENGINEERING	19
DUNLAP ENTERPRISES.....	22	SCHAEFER ENTERPRISES	23
EAGLE CARRIAGE & MACHINE INC.	10	SCHMUNK'S TIRE CENTER, INC.	14
FOGLIO, TRENT	18	SHOW & SELL	27
FRALEY TRACTOR, INC	15	STEVE MORRIS LOGGING.....	10
FULL CIRCLE FINANCE.....	6	STIHL NORTHWEST.....	17
GEM.....	8	TRIAD MACHINERY, INC	22
HIGH CASCADES AGENCY.....	12	TUBIT ENTERPRISES, INC.	23
HOLT OF CALIFORNIA.....	3	WARATAH FORESTRY ATTACHMENTS	2
INTERMOUNTAIN LOGGING CONFERENCE	26	WASHINGTON CONTRACT LOGGERS ASSOC.....	28
LOCK & LUBE	20	WESTERN STATES	3
LOGGERS WORLD SUBSCRIPTION.....	26	WHITE MOUNTAIN CHAIN	6
LOGGERS WORLD IRONMART	24	ZENDER EQUIPMENT	13
MADSEN'S SHOP & SUPPLY, INC.	12		
MPI EQUIPMENT	9		
N. C. MACHINERY.....	3, 11		

The Limited Edition
LOGGERS WORLD
50th Anniversary
Window Sticker
Only \$8 each

Put one on your window
and let the world know
you read Loggers World!

You can also order on our website
at www.loggersworld.com
Visa or Mastercard or Paypal



LOGGERS WORLD
50th Anniversary
1964 - 2014



Please send me
Stickers at \$8 each
Add \$1 for shipping
While Quantities Last
WASHINGTON RESIDENTS: ADD 9.6% SALES TAX

Send your check or Money order to:
LOGGERS WORLD LLC
P. O. Box 1631
CHEHALIS, WA 98532

NAME:.....
ADDRESS:.....
CITY:..... STATE:..... ZIP:.....
PHONE: ().....
WASHINGTON RESIDENTS: ADD 9.6% SALES TAX
(ALLOW 3 WEEKS FOR DELIVERY)