

LOG TRUCKER

VOLUME 43 NUMBER 7

To Advertise Call (800) 462-8283

JULY 2016



REPORTING IN FROM...



Originally established in 1963, the **Deming Logging Show** aims to financially assist loggers who were injured in the woods in **Whatcom County**. The show featured 31 logging events, World Championship Speed Climbing and professional acts. **Brian Pederson** was named the 2016 Bull of the Woods at the event.

Deming Oregon

Deming is a census-designated place in **Whatcom County**, Washington and has a population of 353 people. **The town was named after the first postmaster, George Deming.** The community is also where the **Nooksack Tribe** government offices are and the area is located within the **Nooksack Indian Reservation**.

Located just outside of rapidly growing **Bellingham, Washington** - Deming still has a strong legacy of being a timber town. There's plenty of nearby outdoor recreation activities available in the Bellingham area, while summers are generally pleasant. **Tucked north of Seattle and south of Vancouver** - Deming and Bellingham are unique in setting and history.

IN THIS ISSUE



ON THE FRONT: Vintage Trucking's 2014 Peterbilt 389 long hood sits on display at the Deming Logging Show just outside of Bellingham, Wash. It has a 1977 Pederson trailer and 550 Cummins ISX. The truck is owned by Leslie Kyle, who has five log trucks out of Bow, Wash. (Photo by Brandon Hansen).

See "Deming Log Show" starting on Page 4

2. REPORTING IN FROM...

4. DEMING LOGGING SHOW

FROM DEMING, WASHINGTON by Brandon Hansen

15. RANDOM TRUCK SHOTS

18. BLAST FROM THE PAST

A LOOK AT OUR HERITAGE by Quinn J. Murk

20. ADVERTISERS INDEX

WE'VE GOT WHAT YOU WANT

LIKE WHAT YOU SEE IN LOG TRUCKER?

Buy a Subscription so you don't miss a single issue:
www.loggersworld.com

LOG TRUCKER

Founded in 1975 by Finley Hays

Published by

LOGGERS WORLD LLC

Phone **(360) 262-3376**

PUBLISHERS.....Kevin & Nancy Core
EDITORS EMERITI.....Finley Hays, Mike Crouse
EDITOR/WRITER.....Brandon Hansen
ADVERTISING.....Kevin Core
OFFICE MANAGER.....Nancy Core

POSTMASTER: Send address changes to:

LOGGERS WORLD LLC,
P. O. Box 1631, Chehalis, WA 98532-8425

E-Mail: logworld@aol.com

SUBSCRIPTION RATE (In U.S.A.):
\$25.00 per year; Two years for \$50.00

LOGGERS WORLD LLC cannot and does not assume responsibility for the contents of any advertising in Loggers World. The representations made by advertising is the responsibility of the advertiser and not Loggers World. Loggers World does not knowingly accept advertising that is false or misleading. The limit of Loggers World liability in case of a mistake made in advertising copy by Loggers World will be the charge of the actual space containing the error or less for that particular advertisement



★ GENERAL TRAILER ★

Building the Best...Repairing the Rest.

Your business is all about results and that means raising the bar when it comes to having quality equipment, like these new and used Conversion Frames you'll find at the GENERAL.

GENERAL TRAILER Raise the Bar

New and Used Conversion Frames in Stock

Converts Long Log
Truck and Trailer to a
Short Logger - New \$11,000

Used Tandem Axle Pup Trailer



Ready to Work - Only \$7950

Raising the bar helps to eliminate uncertainty, so make your dollars work hard for you by going to the GENERAL for durable, affordable equipment, like this used Tandem Axle Pup Trailer.

In Stock New Ranco End Dumps



Model ED26-34 Ready for Work
Priced at \$43,125

When you raise the bar to get the best built equipment on the road, you'll be headed to the GENERAL for the rugged quality of any of our new Ranco End Dumps.

New Ranco "Anvil" Rock Bodies



15 and 16
Foot, in
Stock
Priced from \$20,692 Includes FET

When you're busy hauling for your customers, you need to keep the bar high with the most reliable equipment, which you'll get with any of these new "Anvil" Rock Bodies from the GENERAL.

Call the General's Headquarters.
1-800-452-9532

New Felling 35-Ton Lowboy



Model XF-70-2 Only \$50,145

Count on hauling the maximum payloads every day when you roll with the best, like this new Felling 35-Ton Lowboy you'll find only at the GENERAL.

1979 Miller 12-Ton Tandem Axle Tilt Bed Trailer



Good Condition - Only \$8850

You can't get the goods to market with cut rate equipment, so raise the bar and get the best from GENERAL, like this reliable used Miller 12-Ton Tandem Axle Tilt Bed Trailer.

New 2016 Peerless 53 Ft. 4-Axle Drop Center Chip Vans in Stock



New in Stock



Peerless Live
Floor Trailers

Call
Jerry
for a
Blowout
Quote
Today!

Call Jerry Blair in Oregon City **1-800-452-9683**

General Trailer Parts JULY PARTS SPECIALS

Truck-Lite

3050-3 2" Rnd. Clearance LED Red	\$4.65 Ea
3050A-3 2" Rnd. Clearance LED Amber	\$4.65 Ea
3070-3 2" LED Beehive Red	\$4.75 Ea
3070A-3 2" LED Beehive Amber	\$4.75 Ea
4050-3 4" Rnd Red LED S/T/T	\$11.85 Ea
4050A-4 4" Rnd Amber LED S/T/T	\$12.45 Ea
44226R LED Super 44 S/T/T 6 Diode	\$15.40 Ea
60360P 5" Multi Purpose Lamp	\$8.25 Ea
6036-3 6" Oval STT LED Red Lamp	\$15.65 Ea
80374 5" Rubber Housed W/4509 Bulb	\$14.55 Ea
9085W License Light With Bracket	\$24.00 Ea



Apitong

1-125-7-12 1-1/8"X7"X12' Apitong Board	\$39.50 Ea
1-125-7-13 1-1/8"X7"X13' Apitong Board	\$42.75 Ea
1-125-7-14 1-1/8"X7"X14' Apitong Board	\$48.50 Ea
1-125-7-15 1-1/8"X7"X15' Apitong Board	\$51.50 Ea
1-125-7-17 1-1/8"X7"X17' Apitong Board	\$58.50 Ea



Safety Products

4263A PRECO Amber Strobe Light	\$105.50 Ea
2000 Straight, Mudflap Ref. Bars	\$14.95 Ea
2560A 11" Red, 7" WHT 3M REFL. Tape RL	\$97.50 Ea
1005 Reflective Triangle Kit	\$17.50 Ea
5070 3 Min. Smoke Bomb 40K Cubic Ft.	\$1.06 Ea
0726-02 20 Minute Fusee Flare	\$2.10 Ea
0726-03 30 Minute Fusee Flare	\$2.35 Ea
2564A 2"X12" White Refl. Tape Strip	\$1.06 Ea
2564S 2"X18" 11R/7W Refl. Tape Strip	\$1.06 Ea



74972 Clamp Style Strap Roller
\$45.90 Each



NOTE: NOT ALL ITEMS ARE IN STOCK AT ALL LOCATIONS. HOWEVER, WE WILL BE HAPPY TO TRANSFER INVENTORY TO THE BRANCH NEAREST YOU.

Visit generaltrailerparts.com

SPRINGFIELD

1420 South B Street
Springfield, OR 97477
Phone: (541) 746-8218
1 (800) 452-9532
Fax: (541) 726-4707

MILTON

7200 Pacific Highway East
Milton, WA 98354
Phone (253) 926-8903
1 (800) 562-8380
Fax: (253) 926-8908

OREGON CITY

21195 S. Highway 99 E.
Oregon City, OR 97045
Phone: (503) 263-2702
1 (800) 452-9683
Fax: (503) 266-9498

REDDING

5875 Eastside Road
Redding, CA 96001
Phone: (530) 246-3813
1 (800) 475-1057
Fax: (530) 246-3823

Deming Logging Show

A CHOP OFF THE BLOCK

Deming's Clint Stafford takes the final swing during the Deming Logging Show last month just outside of Bellingham. The show had 31 events in all where local and out-of-area competitors showed their skills to thousands of spectators. (BELOW) The guys running the hot saws are going to need a bigger tree with this setup.

For a few days in June, the small Washington town of Deming becomes a display of the area's timber legacy... and souped-up chainsaws

The 2016 Deming Logging Show has been going on strong since 1963 - helping benefit "busted up" loggers in Whatcom County. Along with a multitude of vendors, BBQ, log trucks, machinery and even horse rides - the show entertains everybody with 31 timbersport events over two days.

Here are the winners from the 2016 Deming Logging Show.

SPORTSMANSHIP

Bryce Blockley

ALL-AROUND LOGGER

Nick VanBrocklin

GOLD AXE

Bill Zender

SILVER AXE

Rob Graham
Moose & Maxine O'Brien

PRESIDENT WATCH

Johnna Larsen
Sean Duling

MOST ACTIVE NON-CONTESTANT

Guy Smith

BEST LOAD OF LOGS

1. Frank Harkness Trucking
Driver: Randy Hamilton
Loader: Jesse Galbraith

1. VanDyk and Sons Logging
Driver: Adam Grimes
Loader: Jesse Galbraith

1. Eastwood Trucking
Driver: Kyle Wagner
Loader: Dan Klosner

BEST LOAD OF LOGS

1. Rob Graham Trucking #32
Driver: Bud Ashe Jr.
Loader: Cody Wesson

AXE THROWING

1. Dan Jackson 29
2. Kendal Cain 25
3. Nick VanBrocklin 24

CABLE SPLICING

1. Ryan Lenssen/Erik Anderson
1:42.21



2. Jeff Fetter/Arthur Fetter
2:40.91
3. Justin Offredi/Phil Zwick
2:40.99

CHAIN SAW BUCKING (6cu. and under-modified)

1. Justin Offredi 5.33
2. Will Mathews 5.39
3. Andy Hodder 5.53

CHAIN SAW BUCKING (6cu. and under-stock)

1. Jeff Fetter 6.15
2. Will Mathews 6.25
3. Andy Hodder 6.59

CHOKER SETTING

1. Jacob White 21.16
2. Billy Clinkenbeard 21.43
3. Bryce Postlewait 21.84

DOUBLE BUCKING

1. Kris DeKreik
/Nick Van Bocklin 17.63
2. Les Tyle
/Tony Kyle 17.85
3. Mike Truong
/Jalen Johansen 19.78

(Continued on Page 14
See "Deming")



READY TO SHINE

This line of Kenworths were ready to shine at the Deming Logging show, just outside the main entrance to the arena.

WHIT-LOG Trailers

P.O. BOX 668 • WILBUR, OR 97494

WE ARE NOW ON FACEBOOK!
Check out all the pictures and
Like Our Page!



www.facebook.com/Whitlogtrailers.com



B&G Logging & Construction LLC, PHILOMATH, OR, Brand New 2016 Whit-Log TWSE300 3 Axle Long Logger with Matching Truck Equipment. Custom Steel Cab Rack, Lift Axle Fender Kit, and Much More... **Thanks Levi!!**



Miller Timber Services Inc., PHILOMATH, OR, Brand New 2016 Whit-Log Quick Change Lowboy/Long Logger Truck Equipment. Custom Aluminum Cab Rack, Wet Kit, Slider, Insert Stinger, and Much More... **Thanks Lee & John!!**



Timber Toters, PAROWAN, UT, Brand New 2016 Whit-Log SEWC100 Long Logger with Matching Quick Change Truck Equipment. Customer Aluminum Cab Rack, Insert Stinger Assembly, Custom Rides for LL to ride behind Bunk, and Much More... **Thanks Jeff!!**



Pellham Cutting Inc., ST. HELENS, OR, (2) Brand New 2016 Whit-Log SLE300 Short Logger's, Bendix Disc Brakes, with Matching Quick Change LL/SL Truck Equipment. Custom Steel Cab Rack, Telescoping Pole Stinger, and Much More... **Thanks Greg!!**

OFFICE: (541) 673-1166
EMAIL: brett@whitlogtrailers.com

TOLL FREE 1-800-452-1234
www.whitlogtrailers.com



DIFFERENT STROKES FOR DIFFERENT FOLKS
The fronts of each logging truck in this line was different. Ask any log truck driver and he'll have a different opinion on what looks the best.

Advanced Hydraulic Supply

4444 N.E. 148TH Avenue, Portland OR, 97230

1-877-887-1730 • (503) 289-0354

FOREST master

**SUPERIOR PERFORMANCE
HOSE ASSEMBLIES FOR
FORESTRY MACHINES**



- Superior Abrasion Resistance
- Improved Service Temperature to -46° C (-50° F)
- High Flexibility
- High Tensile "Textile" Braid Layer



LOG TRUCKER VIDEO

Use your smartphone to download a QR-reading app then scan this code to watch a video of the Deming Logging Show in action!

SCHOTT
PARTS & ACCESSORIES
503-463-0500
CALL FOR OUR CATALOG!

Summer
Saturday
Hours 9-1

I-5 Exit 263

8983 TRUCKMAN WAY
SALEM, OR 97303

SHOWROOM HOURS

Monday-Friday: 8:00-5:30

Saturday: 9:00-1:00

WWW.TRUCKCHROME.COM

Brooks Truck Show August 27th!

HOWES LUBRICATOR
PRODUCTS

Quality Products To The Trade - Since 1920
• Anti-Gel • Adds Lubricity • Increase MPG

Meaner Power Cleaner

**GUARANTEED
TO INCREASE MILEAGE 5%**

- CALL FOR MORE INFORMATION -



LED WORKLIGHT
Spot or Flood Versions
10-30V - 780 Lumen

SALE \$13.85 ea

CHROME BUMPERS

We Have *Square* & *Tapered* Bumpers,
12", 16", 18", 20" & 22"

SPECIAL CUT OUTS - No Problem!



16" Tapered

**Window Screens
in Stock!**



*Your Home
for Chrome!*

• BUMPERS • STACKS • LED LIGHTS
• CHROME • FLAPS • FENDERS



ALL LINED UP
To start the Deming Logging Show, the former Bulls of the Woods line up for the crowd and the opening ceremonies.

Progressive Casualty Ins. Co. All coverage subject to policy terms.

LOG-HAULING

FLO

PROTECTING THE RIG THAT RUNS YOUR BUSINESS!

HIT THE ROAD WITH:

- FLEXIBLE PAYMENT PLANS
- DOWNTIME REIMBURSEMENT
- ONLINE CERTIFICATES

COLLECT THEM ALL!

1-800-PROGRESSIVE

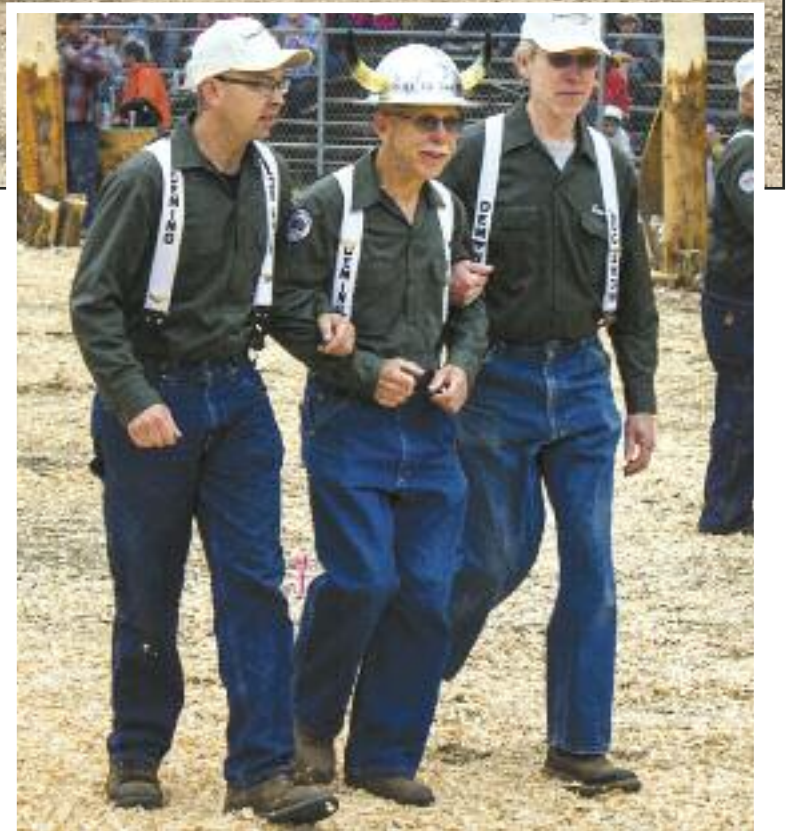
PROGRESSIVE
COMMERCIAL

PROGRESSIVE.COM



MAKING A ROUND

This Western Star self-loader - owned by Brett Engholm Trucking - takes a turn in the Deming arena. (BELOW) 2016 Bull of the Woods Brian Pederson is recognized in front of the crowd.



Stop by and ask for the
"LOGGER'S SPECIAL"
for this
**TRAEGER
JUNIOR
PRO
pellet grill**



We have Stihl & Husqvarna chainsaws,
a full wire rope & rigging shop,
work clothes, calk boots, and much more.

HARBOR
Saw & Supply inc.

3102 Simpson Ave. in Hoquiam!
800-786-6463 • (360) 532 4600

G. W. GANNON EQUIPMENT
31914 ROLLAND DRIVE
TANGENT, OR 97389
(5 MILES SOUTH OF ALBANY) **(541) 928-5244**



1992 KW T-800, N-14 Cummins, 13 spd.
with 2 spd. rear ends on pad suspension



1992 KW T-800, N-14 Cummins, 15 spd.
with 2 spd. rear ends on pad suspension

**PRICES
REDUCED**
Also Available:
Bunks & Trailers with
Electric Scales

**ON FIRE**

Rob Grahm's red-flamed No. 32 Kenworth T-800 looked particularly bold at the Deming Logging Show. Who needs a hot rod when you have a log truck?

We Specialize in REPOWER FRAME CLIPS



EPA 07 & 10, Detroit DD-15 & Cummins ISX's - **CALL!**

Need a Dump Box?



DUMP BOXES AVAILABLE, 14' - 16'
CALL FOR PRICING!



**CAT
C-15
6NZ**

Several
Single
Turbos,
Super
Condition

Low Miles, **CALL!**



We are your
NORTHWEST HEADQUARTERS
for 46,000-lb. ROCKWELL, EATON &
SPICER TANDEM REARENDS - all ratios,
all suspensions, rebuilt gearheads &
parts available - **CALL NOW!**



REBUILT TRANSMISSIONS

RTO-14713 \$3,100	RTO-16915 . . . \$2,650
RTO-16713 \$3,300	RTLO-16618 . . \$3,200
RTO-16913 \$3,500	RTLO-16718 . . \$3,850
RTO-18913 \$3,750	RTLO-18918 . . \$4,350
RTO-14715 \$2,750	RTLO-20918 . . \$4,625

DETROIT SERIES "60"



Dedec III, IV & V Engines Available,
With Jakes, Good Condition



WHOLESALE TRUCK PARTS & EQUIP.

Nationwide & Canada

1-800-547-1315

5925 N.E. Portland Highway, Portland, OR 97218

HOURS: 8:00 - 5:30 Monday thru Friday

FAX# 1-503-288-6337 • DELIVERY AVAILABLE

503-288-6333



THIS 1968 WESTERN STAR SITS ON A NEW WESTERN STAR at the Deming Log Show on a brand new 5700 SE Western Star (on the next page). Headquartered in Portland, Ore. Western Star began when White Motor Company started the Western Star division in 1967 so this older model is one of the early trucks put out by the company (hence the “White Western Star” decals). Back then, Western Star had a headquarters in Kelowna, British Columbia while White was based in Cleveland, Ohio.





Subscribe Today!
LOG TRUCKER
The magazine about the forest products transportation industry
12 Issues – 1 Year Subscription
\$25⁰⁰
WA Residents pay \$27.40 w/tax
Inside U.S.A.

Offer expires
December 31, 2016

LOG TRUCKER

☐ \$25.00 for 1-Year Subscription ☐ \$50.00 for 2-Year Subscription

WASHINGTON RESIDENTS PAY \$27.40 & \$54.80 w/SALES TAX

NAME:.....

ADDRESS:.....

CITY:..... STATE:..... ZIP:.....

PHONE: ()

(ALLOW 5 WEEKS FOR DELIVERY OF FIRST ISSUE)

Send your check or Money order to:
LOGGERS WORLD LLC
P. O. Box 1631
CHEHALIS, WA 98532

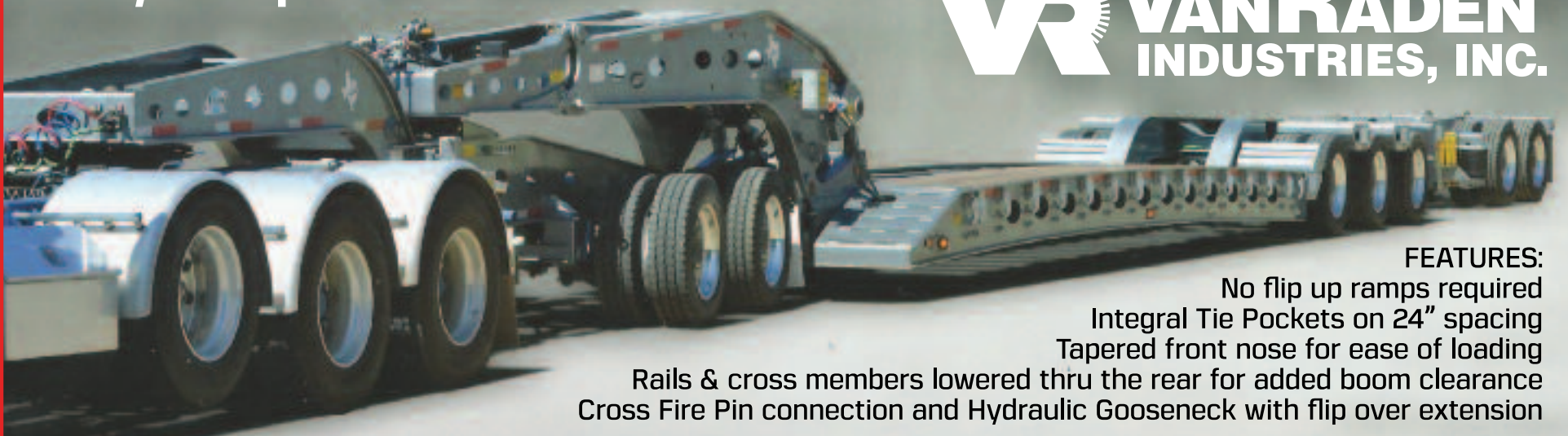


LOOKING SHARP

This Western Star 5700 SE stands at the ready with its distinct look. Western Star uses Detroit engines up to 600 horsepower and Detroit axles along with a DT12 transmission.

Heavy Haul Specialists

VR VAN RADEN INDUSTRIES, INC.



FEATURES:

- No flip up ramps required
- Integral Tie Pockets on 24" spacing
- Tapered front nose for ease of loading
- Rails & cross members lowered thru the rear for added boom clearance
- Cross Fire Pin connection and Hydraulic Gooseneck with flip over extension

55-85 TON & CUSTOM LOWBED COMBINATIONS



CALL NOW to Order
or find out what we can build for you!

800-522-0099

AUTHORIZED DEALER



GOING UP

This Skagit tower hovers above the event and the 2014 Peterbilt 389 from Vintage Trucking. Leslie Kyle owns this truck along with four others. (RIGHT) Loggers try to clear this large log during the show. While they wear their hard hats, results vary on if they stay on while running.



MILLER TRUCK SALVAGE L.L.C.

DIESEL TRUCKS & PARTS

15015 N. W. MILL RD. • PORTLAND, OR 97231

"Specializing in '70's thru 90's"

(503) 283-1797



1998 IHC 9400, N-14 plus, 18 spd, dbl locking 46-160 **Parting Out**



1994 RD Mack, **Parting Out Only**

1980 W900A, BC Cummins, 13 spd, Ross p/s. **Parting Out**



2000 T800, C15, AG400 w/lockers. **Parting Out**



National 300B Crane **\$4500**



1985 W900B, BC3 400 runs good. **Parting Out**



ENGINES / TRANSMISSIONS
Check With Us Before You Buy!

TRANSMISSIONS

• RT 6613	\$1,250
• RT 6610	\$1,250
• RTO 15613	\$2,000
• RTO 14715	\$1,500
• RTO 14613	\$1,500
• RTLO 16713A	\$2,600
• RTLO 18718B	\$2,750

ENGINES

• 3406B 425 h.p. Inspected.....	\$5,000
(Uninspected)	
• 8.3 Cummins, mech. \$3500 exchange	
• 5.9 Cummins, runs good	\$2,750
• Cummins BC 1-4 series	3000-4500 exchange
• E-7 300 W/Jakes, good runner	\$4000
• 675 285 hp., low miles	\$3500
• 3406E 5EK- 2WS. 4000-6000 exchange	
• DDEC4 450hp., runs good	\$5000

EXCHANGE REQUIRED ON SOME EQUIPMENT - CALL FOR SPECIFIC UNITS

FINANCING THE FUTURE

With over 30 years of lending to the forest products industry, Mike Lobb can offer solutions for all of your equipment needs. His experience makes the process simple and time saving.

- ✓ New / Used/ RPO
- ✓ Seasonal & Annual Payments
- ✓ Dealer or Private Party
- ✓ Start ups

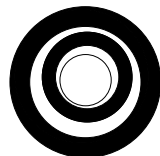
Let us show you how we can help finance your major overhaul

Sam says, "Mike treats me right, he'll treat you right!"



Mike & Sam

Call MIKE LOBB Today!



Business Equipment Loans

503-784-3935 (Cell) • 971-204-0038 (Office)

email: mlobb@bizequiploans.com • PMB #407, 3 Monroe Parkway, Lake Oswego, OR 97035

LOCKED AND LOADED

This Eastwood Kenworth T-800 brought in the third best "Load of Logs" for the Deming Log Show. Loads were displayed during the main logging show in the arena.



LINCOLN INDUSTRIAL CORPORATION, INC.

4130 TUMWATER TRUCK ROUTE • PORT ANGELES, WA.

1-800-492-6122

Installation Centers in:

- Longview, WA
- Molalla, OR
- Sagle, ID
- Aberdeen, WA
- Woodland, WA
- Tacoma, WA

WE DO IT ALL! FOR A CURRENT QUOTE, CALL WAYNE • CELL # 360-461-3795 OR 1-888-212-0514



**4 Axle
Long Log
Trailer**

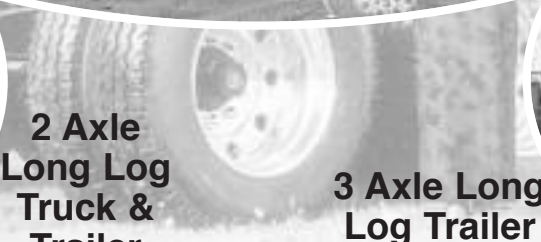
New Short Log/Long Log Truck Gear with Updated Trailers



**2 Axle Long
Logger, Truck
Bunk & Custom
Cab Guard**



**2 Axle
Long Log
Truck &
Trailer
Package**



**3 Axle Long
Log Trailer**



**Waiting
to Go
Home**

**After it Got
Home**



LINCOLN
Truck Bodies & Trailers

Ampliroll
HOOKLIFTS

Rugby
HOISTS & BODIES

OUR 70TH YEAR. . . KEEP THINK-N-LINCOLN . . . 1946 - 2016



The Eastwood truck was driven by Kyle Wagner and it was loaded by shovel operator Dan Klossner. Klossner went out in the woods right out of high school and has worked for his dad Henry Klossner, Mountain Skyliners Inc. in Leavenworth, Wash. He started working for Buckhorn Logging and Chipping in 2008 and is a logging supervisor there.

Deming Log Show

(Continued from Page 4)

HAND BUCKING

1. Trebb Rainey 23.65
2. Nick Van Brocklin 30.70
3. Tony Kyle 31.43

HOT SAWS

1. Jeff Fetter /Arthur Fetter 1.71
2. Ben Flouers /Bubba Simplot 1.84
3. Eli Bekkavar /Clint Stafford 2.67

IRON MAN

1. Nick Van Brocklin 1:20.60
2. Tony Kyle 1:35.75
3. Ed Williams 1:42.93
4. Kendal Cain 1:47.31

KIDS LOG ROLLING

1. Christopher Rathjen
2. Gunner Rathjen
3. Ryker Marseing

KID SPEED CLIMBING

30 feet

1. Vance Lawrence 25:34

KID SPEED CLIMBING

50 feet

1. Payton Segerman 38.63

Crowds made the Deming Logging Show grounds a busy place for the weekend. If you find yourself in Bellingham on the same weekend as the show, do yourself a favor and make a trip out to the show!

CHECK US OUT AT www.loggersworld.com

LOG AND PULP LOADERS

Several Used Sercos Available

1997 KENWORTH T800B, N-14 Cummins, 435 hp, Jake, Fuller 18 speed, 14,600# front, 46,000# rear, air tag, full lockers, Serco 160 Log Loader, 25' boom, 17,000 capacity, 46" rotating grapple, Fruehauf hop on trailer STK. #5274

2004 INTERNATIONAL 7600, C-11 CAT, 315 hp, 10 speed, 16,000# front, 40,000# rear, **2015 United 4000 Gallon Water Tank**, self-loading, 2 front, 2 side, 2 rear sprays, hose reel STK. #5070

2006 FREIGHTLINER M2106 6X6, C-7 CAT, 275 hp, 8LL 10 speed, 16,000# front, 40,000# rear, **4000 Gallon Valew Water Tank**, 2 front, 1 side, 2 rear sprays, hose reel STK. #5139

NEW 2016 SERCO 160 LOG LOADER, 25' boom, 17797 capacity, 46" grapple STK. #5215

2007 INTERNATIONAL 4400, DT466, 260 hp, 10 speed, 32,000 GVW, 11' service body, IMT 6025 Service Crane, 25' boom, 10,500# capacity, hyd outriggers, Miller welder, Vanier Tiger air comp STK. #5267

2004 Freightliner FL112 6X6, C-12 CAT, 380 hp, Jake, 18 spd, 22,000 frt, 46,000# rear, Chalmers, full lockers, 15' steel dump body STK. #5236

Sold & Serviced by



L&M Truck Sales, Inc.
4001 E. Boone Ave.
Spokane, WA 99202
800-796-9813

Wheeler's

COMPLETE RV & DIESEL SERVICE

**WE ARE HERE FOR ALL YOUR
 HEAVY DIESEL & MECHANICAL
 SERVICE NEEDS:**

- Complete Heavy Diesel Diagnostics
- Engine Work
- Suspension
- Electrical Repair
- Rear Ends
- A/C Work
- Transmissions
- Light Duty Fleet Truck Service - Gas & Diesel

Saturday Service Available by Appointment



**Call about our
 Oil Service Special**



Call (360) 577-7900

www.wheelersrepair.com

2406 TALLEY WAY • KELSO, WASHINGTON • KELSO INDUSTRIAL PARK

RANDOM TRUCK SHOTS

SEND YOUR SHOTS TO logworld@aol.com

JULY 2016

LOG TRUCKER



VAUGHT TRUCKING's NO. 9 1999 Kenworth W900L is loaded out on the jobsite. The truck has a Cummins signature series 600-HP motor with an 18-speed transmission and 2001 Alpine gear. (Photo by Kevin Vaught)

THANK YOU BRIAN WILSON

with Brian Wilson Trucking
from Emmett, Idaho
for the purchase of a

**2017
Alpine
3 Axle
Long Log
Trailer**

with all the rigging



CALL (208) 877-1714

2810 Big Bear Ridge Road • P.O. Box 341, Deary, ID 83823

Fax: 208-877-1198 • EMAIL: alpineindustrial@moscow.com



BEEN AROUND A WHILE

This 1949 Autocar is owned by Bill Brickley and Andy Larsen and was one of many older models of log trucks at the Deming Logging Show.



Quality Diesel Parts

PH: 800-852-9488 Fax: 503-252-9652
www.qualitydieselparts.com



Allis Chalmers
Bendix
Buda
Case
Cat Industrial
Cat Marine
Cat Off-Highway
Cat Truck
Continental
Cummins
Davis Brown
Detroit
Deutz

**NEW
ARRIVALS**
Cummins N-14E
Navistar 466E

Dresser/IH
Dodge Truck
Ford Industrial
Ford Tractor
Ford Truck
GMC Truck
Navistar/IH
Iveco
John Deere
Komatsu
Mack
Massey-Ferguson
Perkins
And Much More



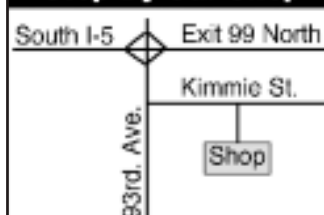
WE OFFER:

- General Truck Repair
- Complete Diesel Engine Service
Cat - Cummins - Detroit
- Hendrickson Rebush Center

Incl. Hendrickson 380 Series
Equalizer Beams

We Rebush Log Trailers
CHALMERS & 8-BAG
KENWORTH SUSPENSION
REBUSHES

- Stop By Our Shop -



**COMPLETE
LOWER
REBUSH**

\$1275
Bar Pins Extra

Usually in 3 Hours or less
Call For Appointment

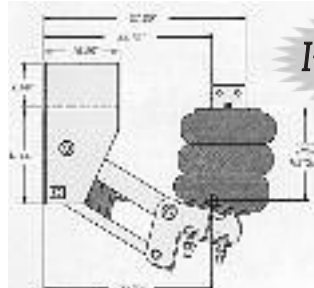


SCHELLER DIESEL SERVICE

9144 Kimmie Street - Olympia, WA. 98502 • (360) 943-9818

**KNOX****DOUGLAS, INC.**

NEW Silent Drive Ultra Flex Series UF-1013-1B

*In Stock Now!*

Pushers or Tag,
Utilizes Steer
Axle (Single
Tire only)
13,200 lbs
Capacity

**With Rebuilt Axle or your Axle.
Call for your Application**

Suspension and Air Parts in
Stock and Available Now!



Authorized PULLTARPS Dealer.
We carry parts and provide service
for all your PULLTARPS needs

Pederson

FOR LOGGING OR DUMP TRUCKS



FENDER KITS

Spindle Mounted for Self Steering
Auxiliary Axles. Available with
instructions to install it yourself
or we can do it for you.

It wasn't the warmest of days at the Deming Logging Show, so competitors did their best to stay out of the water near the log pond. It didn't really work. Plenty got soaked and the crowd got their money's worth watching loggers end up in the drink time and time again.



GEAR BOX Inc.

TRANSMISSION & DIFFERENTIAL REBUILD & REPAIR

1037 State Street (Exit 79 off I-5) • Chehalis, WA.

8:00 a.m. - 5:00 p.m.
Monday - Friday

(360) 748-8350

**Let us Lower Your Cost Per Mile
with our
High Quality Time & Material Rebuilds**

★ FULLER
★ EATON
TRANSMISSIONS
TRANSFER CASES
★ SPICER
★ ROCKWELL
DIFFERENTIALS
AUXILIARIES

Complete Time &
Material Rebuild
Unit Comes with a
**1 Yr. Unlimited
Mileage Warranty**



We Pride Ourselves on Genuine OEM Parts

CUSTOM BUILD or EXCHANGE

SILENT DRIVE INC. Suspension
Component
Group

**WE SELL and
INSTALL THEM!
CALL US!**

**P.O. Box 5701
Salem, OR 97304**

We Accept



**503-363-0892
fax 503-362-5435**

BLAST FROM THE PAST

BY QUINN J. MURK FOR LOGGERS WORLD

ROAD BUILDING

Before the hydraulic excavator of today and even pre-dating the bull dozer, the steam shovel was the first mechanical machine used to build forest road grades.

These machines moved the logs, grubbed stumps, moved dirt, and with a skilled operator even cut in drainage ditches or culverts. In later years, the bull dozer took over the majority of road building, and today we've come full circle back to the excavator doing a lot of today's road building. In this photo, the hose trailing the shovel is being used to fill the water supply for the boiler, something that had to be done several times throughout the day.

- From the
Quinn J. Murk
collection



CONTACT QUINN:

VIA EMAIL

ktnurk@centurylink.net

Or by Mail at:

P.O. Box 319

Siletz, OR 97380



What can we
BUILD
for you?

888-222-5201

AFTERMARKET • NEW OEM
USED PARTS • HOODS

I-5 & Exit 59 Toledo, WA

Monday to Friday
8-4:30pm

JULY SPECIALS

8 Tires

11-24.5, 60% Tread



\$700
For Set



**Washington
Truck Rebuilders**

www.washingtontruckrebuilders.com

TRUCK • TRAILER • COLLISION
FIBERGLASS REPAIR

1-800-373-3719

wtr@toledotel.com

JULY SPECIALS

**Freightliner
Rear End Cutoffs**



\$1200

HOOD NEED REPAIRED? CALL US FOR A QUOTE!



CHECK OUT OUR WEBSITE:

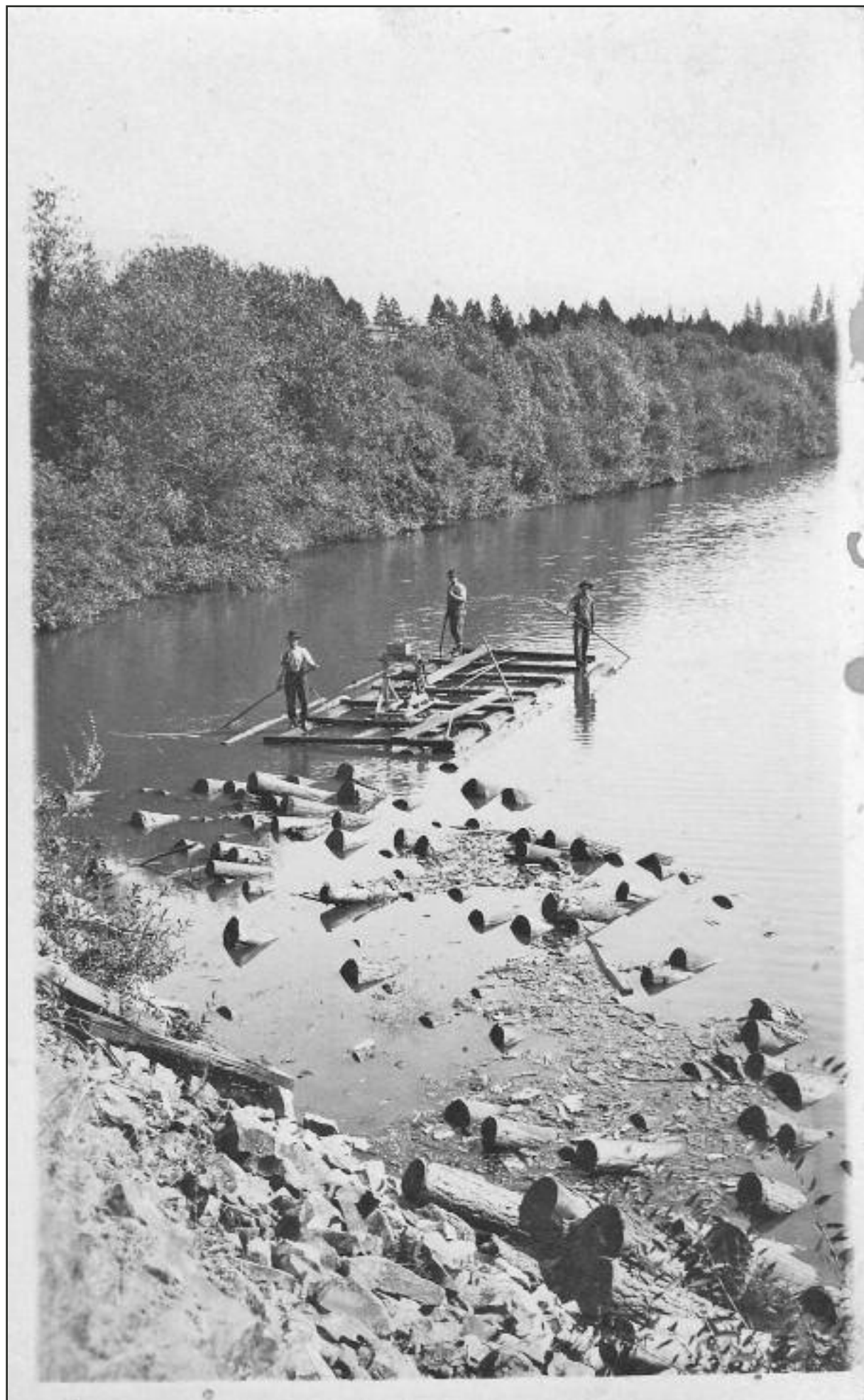
WWW.WASHINGTONTRUCKREBUILDERS.COM

BLAST FROM THE PAST

BY QUINN J. MURK FOR
LOGGERS WORLD

Back in the days of log driving in our rivers, logs left behind in the river were still valuable to those who owned them. The rush of the main body of logs banked these sinkers or "dead-heads" as they were known. Sometimes the butt end of a log will not float. Push up against the bank on a bend in the river, and the logs are easily recoverable. Three men pulling a raft with a hand winch are in the process of picking up the logs. Pulled up to the bottom of the raft, and chained in place, the logs will be taken to an area where one of two things will probably happen: (1) the logs could be tied to logs that float, and sent downstream, or (2) they could be placed up on dry land, where they would have a chance to dry out and be picked up during the next year's drive.

- This 1890's photo is from the Quinn J. Murk collection



**Do you have
a photo or
comment
you'd like to
share?**

**CONTACT QUINN:
VIA EMAIL**

ktmurk@centurylink.net

Or by Mail at:
P.O. Box 319
Siletz, OR 97380

Need a "Brake" on your Truck Insurance Rates?

T.W. MORGAN INSURANCE SERVICES
Since 1991 Insurance & Financial Services Brokerage Agency

"AN AGENT WHO UNDERSTANDS TRUCKING"

- Log Trucks • DOT Fuel Bonds
- Dump Trucks • Chip Trucks
- Tow Trucks • Sand & Gravel Trucks
- Truckers General Liability & Cargo Available
- Short & Long Haul Trucking • 50-500 miles to unlimited mile radius

**90% of Our Quotes
Save Our Callers \$\$\$
WHAT ABOUT YOU?**

Ask for Tim • 503-245-3345 or 888-821-4717 • Tigard, Oregon
Serving Oregon, Washington & California

LOG TRUCKER

JULY 2016

ADVERTISERS INDEX

Advanced Hydraulic and
Ind. Supply6
Alpine Industrial LLC ..15
Business Equipment
Loans12
G.W. Gannon
Equipment.....8
General Trailer3
Harbor Saw & Supply ...8
Knox-Douglas, Inc.17
L&M Truck Sales,
Inc.14

Lincoln Industrial
Supply13
LKQ K.C. Truck Parts .20
LKQ Wholesale Truck
Parts9
Log Trucker
Subscription10
Miller Truck Salvage
LLC12

Progressive Insurance
Co.7
Quality Diesel Parts16
Radiator Supply House,
Inc.18
Scheller Diesel
Service16
Schott Parts &
Accessories6
The Gear Box Inc.17
Tim Morgan Insurance 19
Van Raden Industries .11

Washington Truck
Rebuilders.....18
Wheeler's RV & Diesel
Service.....14
Whit-Log, Inc.5

FOR SALE

1990 T-800 KW Parts,
Perfect cab, 44 double locker rear ends,
bumper, fuel tank, tires, dump box con-
trols.....**All for \$4,900**

425-622-8294

FILTERS

Air • Fuel • Water • Oil • Hydraulic

Gates Hoses & Fittings
Lincoln Lubrication Equip.

Open Monday - Friday 7:30 am - 5:30 pm
Saturdays 8 am - 1 pm

Williams Oil Filter Service Co.
WOFSCO, INC.

1247 Puyallup Ave., Tacoma, WA 98421
(253) 627-8163

Toll Free: **1-800-522-1250**

FOR SALE



2014 Peterbilt 389 Long Hood 169,000 miles 525 HP Cummins. 18 spd Pete air trac w/ double lockers. Set up for a lift axle. 1979 Whit log trailer with new axles and springs. ...**\$120,000 OBO**

503-869-2240

FOR SALE



2008 Western Star Kit Truck with only 85,000 miles on the cab, frame and 14L 550 HP non egr engine, 46k double locker rears 4:11 ratio on Hendrickson pad, 18 spd, 260 inch WB, w/drop axle. Trailer is a 1971 Peerless in good condition repainted and no cracks**\$75,000 OBO**

503-869-2240



(800) 622-5170 • (360) 736-3344

KC TRUCK PARTS

183 STATE HWY. 508, NAPA VINE, WA.

www.LKQheavytruck.com



2009 Pete 367 Tanker Chassis, Cummins ISX, FRO16210C, DSP41's on AirTrac., lift axle**GREAT BUILDER!!!**



2006 KW W900 Daycab, C-15 Cat 475HP, RTLO18918B tranny, AG-400 rear suspension**PARTING OUT**



1991 KW Log Truck, N-14 Mechanical, 13-speed, AG100, 1986 Peerless trailer**PARTING OUT**



2013 Pete 388, Cummins ISX, RTLO18918B, Air Ride rear...**PARTING OUT**



1996 Pete 378, 3406E Cat, 15-speed, 2-speed 402's/Air Trac**COMPLETE OR PART OUT**



2012 KW T800 Day Cab, Cummins 550 ISX15, RTLO 18918B, 69K Tri-Drive**PARTING OUT**