

LOGGERS WORLD

VOLUME 52 NUMBER 4

To Advertise Call: (800) 462-8283

APRIL 2017

LOGGING WITH GEORGE BOURNE

GLENTROOL, SCOTLAND



April 5-7

**INTERMOUNTAIN LOGGING
CONFERENCE & EQUIPMENT
SHOW**

MARIBEAU PARK HOTEL & CONVENTION CENTER
SPOKANE VALLEY, WASHINGTON



April 26-28

**OLYMPIC LOGGING
CONFERENCE**

FAIRMONT EMPRESS HOTEL
VICTORIA, BRITISH COLUMBIA

PRST STD
U.S. POSTAGE
PAID
PERMIT NO. 178
SALEM, OR

LOGGERS WORLD LLC
P. O. BOX 1631
CHEHALIS, WA 98532-8425

Finley's Rigging Shack "Classic"



**Originally Printed in
October 1979**

MORE POTLATCH

Last issue of Loggers World was about Potlatch and one of Potlatch's contract loggers. This month we will have more about Potlatch and again I thank them for their kindness and hospitality.

One of our big problems in this business is that during the tough winter months it is difficult to find loggers who are working. In order to prepare for this we have gone out and got some pictures and information that will be published later on. We probably have enough for one issue or more of Loggers World. These issues will be published early in 1980.

Last month I went to California and Myron went to Montana.

Our first ever issue of Loggers World was published 15 years ago this month. October of 1964 was the date on Issue number One. Next month we shall have some information about and concerning that first issue and maybe some of the information about Loggers then and now. What happened to some of our early interviewed loggers during the last 15 years?

Between now and next issue I intend to do 2 things One: is to journey to Winn, Michigan and talk with people there about turning waste wood into energy. I want

to visit the Morbark factory and catch up on the great and good pioneering work they have in this area. This may turn out to be a personal crusade for me. "Using Waste Wood" may be a good battle cry.

Two: is to meet and write about the logger who coined that power packed phrase, "Log It Or Lose It!". That man is Carl Giles of Days Creek, Oregon. Carl Giles is a living example of a logger who practices what he preaches and he preaches good sense. 'Log it or Lose it!' there is so much good sense in that phrase and behind it. Picture this phrase, "Log it or Lose it", as the title of a book and it is your job to write the book. You can then start to see the vast sweep of this phrase, the depth and the importance of the subject, the possibilities of expanding 'Log it or Lose it' into a new knowledge for people not acquainted with the life and death of growing trees, in a growing forest. You can picture the reasons for logging and you can visualize the good reasons for Clear Cut logging just as there is good reasons for clear cut corn harvesting.

Oh Yes, Carl Giles and his family have done something great and they have developed and created a phrase that will work for all of us just as we accept it, believe it, learn about it more and more; pro-

ject enthusiasm in our business; and believe in the rightness and fitness of harvesting and planting the forests God gave to us.

There are times I pull the pickup over to the side of a high altitude logging road and look at valley after valley of timber. Beautiful! Awe inspiring! The vistas and the sweep of the scene has a tendency to make the viewer feel small and insignificant by comparison.

But this feeling leaves when one realizes that this is a crop and this crop is given to the care of us Timber Harvesters. I then feel a part of the plan or the rightness of using natural resources, using them wisely, for the good of man who has jurisdiction.

Since I have a vivid imagination and some scope of knowledge my mind rings forth scenes of activity --- the road building, timber falling, logging, log hauling and so forth that can go on in this valley. I then finish this segment of the screened play by viewing the tree planting operations and the care and growth of the new crop of trees.

I switch to another channel and see the products that are made from these trees and count the people who are gainfully employed by the manufacture of these products. For some reason or another my mind always concentrates upon houses, upon the homes that come from these trees. I not only see the homes but I see the family in these homes. I not only see the families in these homes but I see them when there was no such home for them to live in and to own and to care for.

There is a difference. Pick up this family with me and visualize



FINLEY HAYS

and imagine their lives if they could not afford a home and had to rent their home or worse yet, had to live in public housing that is owned by everybody. You know of course that a house which is owned by everyone is owned by no one. You see these crowded living conditions. Things are pass-

able but barely liveable.

That is not the worst thing. The worst thing is the crowding and the people whom you live and associate with. For the most part these are people who do not achieve, who are not proud of their jobs, of their possessions and do not view this country as the land of opportunity that is is. Negative people who fully believe it isn't what you know it is who you know that decides how far you will climb the ladder.

The living among and raising your family in this environment, in this atmosphere, is a serious set back for you and for your family.

Now let's take that same American Family and move them into their own home. They are in a neighborhood of people who are buying their homes. These homes don't belong to everybody, they belong to a family. Each home houses and is owned by one family. One family that fixes the roof when it leaks, that builds a tool shed in the back yard, that planted and kept the lawn, that painted the house and who raises two gardens, one of flowers and one of vegetables.

See the difference?

Can you catch a glimmer of the importance of the work of the people that care for God's woods?

(Continued on Page 7)
See "Rigging Shack"

IN THIS ISSUE



ON THE COVER: George Bourne operates his Deere 1470D Harvester in Scotland for J.D. McBurney.

See "From Across the Pond" starting on Page 5

2. RIGGING SHACK

"Classic" From October 1979 by Finley Hays

5. FROM ACROSS THE POND

LOGGING WITH GEORGE BOURNE. by Brandon Hansen

22. AS WE SEE IT

TEAMWORK MATTERS

23. SUMMARY JUDGEMENT

WILL THE SUPREME COURT FINALLY GET IT RIGHT ON RACE?

by William Perry Pendley

24. IRONMART

26. BLAST FROM THE PAST

26. SHOW AND SELL

29. INDEX/COMING EVENTS

LOGGERS WORLD

Published by LOGGERS WORLD LLC

Founded in 1964 by Finley Hays

Phone (360) 262-3376



Member and Supporter of the
American Loggers Council Since 1994



PUBLISHERS.....Kevin & Nancy Core
EDITORS EMERITI.....Finley Hays, Mike Crouse
EDITOR/WRITER.....Brandon Hansen
ADVERTISING.....Kevin Core
OFFICE MANAGER.....Nancy Core

POSTMASTER: Send address changes to:

LOGGERS WORLD LLC,
P. O. Box 1631, Chehalis, WA 98532-8425

E-Mail: logworld@aol.com

SUBSCRIPTION RATE (In U.S.A.):
\$25.00 per year; Two years for \$50.00

LOGGERS WORLD LLC cannot and does not assume responsibility for the contents of any advertising in Loggers World. The representations made by advertising is the responsibility of the advertiser and not Loggers World. Loggers World does not knowingly accept advertising that is false or misleading. The limit of Loggers World liability in case of a mistake made in advertising copy by Loggers World will be the charge of the actual space containing the error or less for that particular advertisement.

DOOSAN

Authorized Dealer

Sales, Parts & Service
Your #1 Established Forestry Equipment Dealer

Cascade Trader has a Complete Line of new Doosan Log Loaders, Excavators & Wheel Loaders for your Logging & Construction Needs!

Cascade TRADER inc.
EQUIPMENT SALES - LOGGING & CONSTRUCTION



Ask About Our Special Financing: Up to 60 Months

All offers subject to credit approval



THUNDERBIRD Yarder TTY-70, Track Mt, Excellent\$550,000



Doosan DX300LL-5 Log Loader, NEW IN STOCK



DOOSAN 250 Wheel LoaderPOR



Doosan DL420-5 Wheel Loader, NEW IN STOCK



DOOSAN DX85R Excavator New Inventory



Moxy MT31 Articulated Dump Truck, low hrs.....\$92,500



DX300LC-5 Excavator NEW INVENTORY

LOG LOADERS

CAT 235C Log Loader, Pierce Boom	\$17,500
CAT 320DLL Log Loader, 2010, 9700 hrs	\$149,500
CAT 320DFM Log Loader, 2012, low hours	\$185,000
CAT 325LL recent rebuilt engine	\$37,500
CAT 330 Log Loader	\$30,000
DOOSAN DX225LL Log Loader	POR
DOOSAN DX300LL Log Loader, 2012, low hrs	\$185,000
DOOSAN DX300LL-3, For Cab, 6000 hrs	\$210,000
DOOSAN S225LL Log Loader	\$65,000
DOOSAN S300L Log Loader, recent repairs	\$97,500
HITACHI Z350F Log Loader, fresh undercarriage	\$125,000
HYUNDAI 3220 Log Loader, 7500 hrs	\$169,500
HYUNDAI 3220 Log Loader, low hrs, clean	\$239,500
JOHNDEERE 200LC Log Loader, Forestry Cab	\$59,500
JOHN DEERE 2154LL, 2011, 9000 hrs	\$139,500
JOHN DEERE 2454LL, 2015, low hours	\$219,500
JOHN DEERE 2554LL, 15,000 hrs, excel cond	\$125,000
JOHN DEERE 2954LL, 2014, low hours	\$210,000
KOBELCO SK210LC Log Loader	\$64,500
KOBELCO SK210LC-8, For Cab, recent under	\$89,500
KOBELCO 295LL (2009) Log Loader	\$165,000
KOMATSU PC300HD Log Loader	POR
LINKBELT 2800Q Log Loader	\$34,500
LINKBELT 370LX Log Loader	\$149,500
THUNDERBIRD 1238 Log Loader	\$39,500

FELLER BUNCHERS, PROCESSORS

CAT 330BLL Log Loader/KETO 800	\$39,500
DOOSAN DX300LL w/low hrs/KETO 870B	\$210,000
DOOSAN DX300LL/Logmax 7000, 2000 hrs	\$369,000
DOOSAN DX300LL/Waratah HTH623C	\$159,500
HAHN Harvester, HTL300, 3-axle SP	\$19,500
HITACHI EX200LC/DenisDT3000 Stroker	\$32,500
JD 2054/Waratah 622B, 15,000 hrs	\$109,000
JD 2954LL/Waratah HTH623C, 7,200 hrs	\$265,000
JD 759J, 2008, Hot Saw w/360Tilt, 9200 hrs	\$125,000
KETO 525TS Harvesting Head, complete	\$12,500
KOBELCO SK250LC, H/W, War HTH622B, nice	\$114,500
KOMATSU PC128/LogMax sm. Wood Harvester	\$39,500
KOMATSU PC220LC/Pierce 3348 Stroker	\$119,500
KOMATSU XT445-2, Quadco 22" 360 low hrs	\$275,000
LINKBELT LX290LL/Waratah HTH623C	\$185,000
LINKBELT 330LX '07 /Waratah HTH 624C	\$115,000
MADILL 2800 / DENHARCO DM3500 Stroker	\$45,000
PRENTICE 620FB / Waratah HTH-230, Clean!	\$49,500
TIGERCAT LS855C Leveling Shovel/FL85	POR
TIGERCAT LX830C FB, 5702 Disc Saw	\$129,500
TIGERCAT LX870C FB, 5702 Disc Saw	\$165,000
TIMBCO T-445, Bar Saw w/Tilt	\$47,500
TIMBCO T-445EXL, Quadco 22" 40 degree Tilt	\$119,500
TIMBERJACK 2618, Disc Saw, excellent	\$55,000
WARATAH HTH-623C, NEW Inventory	POR

TOWERS & YARDERS

CHRISTY Yarder, Truck mount	\$49,500
KOBELCO SK300LL "Yoder"	\$129,500
KOLLER 501 Trailer Mount, excellent	\$57,500

MADILL 071, 4-Guys, 8V71, w/Rigging	\$107,500
MADILL 071, 4-Guys, 8V71T, fresh paint,nice	\$110,000
MADILL 120 Swing/Grapple Yarder, excellent	POR
PSY-200, Self-Propelled, nice yarder	\$199,500
SKAGIT BU-80C,T-90 Trailer Mount	\$32,500
SKAGIT BU-84 Slackline, T-100HD, Trlr Mt	\$149,500
SKAGIT 739 Slackline T100HD, Trailer MT	\$149,500
SKAGIT GT3 Swing Yarder,Track Mount	\$79,500
THUNDERBIRD 6140 Swing Yarder, nice	POR
THUNDERBIRD TY40 Track Mt, low hrs, Acme 10	POR
THUNDERBIRD TTY45, Track Mt, Eaglet	\$142,500
THUNDERBIRD TTY-70 Track mt., Excellent	\$550,000
WASHINGTON 78-40 Swing Yarder	\$42,500
WASHINGTON 137W Slackline, Trl. Mt., nice!	\$189,500

EXCAVATORS/DOZERS/GRADERS WHEEL LOADERS/SKIDDER

CASE CX160B, Pin Grabber, Thumb, Buckets	\$59,500
CAT D6C, Straight blade w/Tilt, winch, arch	\$25,000
CAT D8H, 46A, U-Blade, Winch	\$27,500
CAT 14E Grader	\$14,500
CAT 312 Excavator w/TowTem Grapple	\$65,000
CAT 330D Excavator, '09, Bkt, Thumb,guards	\$129,500
CAT EL240B Excavator	\$19,500
CAT 525B, Swing Grapple,nice machine	\$85,000
CAT 525B Grapple Skidder, Fixed/Dual Func	\$55,000
CAT 950 Wheel Loader	\$17,500
DOOSAN DL300, Q/C, Tink Rollout, Low Hours	\$99,500
FIAT-ALLIS 8, Winch/Arch, recent work	\$19,500
GARRETT 25 Skidder, Cummins	\$12,500
JOHN DEERE 160D Excavator, Bkt, Thumb	\$84,500
JOHN DEERE 200D Excavator	\$45,000
JOHN DEERE 548D Grpl Skidder, new tires, nice	\$27,500
KOBELCO SK150 "Blade Runner", reduced	\$65,000
KOMATSU PC220LC-7, Bucket/Thumb	\$55,000
LINKBELT 3900Q Excavator, Bucket/Thumb	\$27,500
MADILL RB500 (180 size) Excavator, guards	\$45,000
MOUNTAIN Logger ML150 Skidder, new tires	\$18,500

CARRIAGES & MISC

ACME "PEE-WEE" Slackpulling Carriage	\$22,500
BOWMAN MARK V SKYCAR, 2006	\$44,500
CTR 314-SCD Pull Thru Delimber	\$18,500
DANZCO PT20 Pull Thru Delimber, excellent	\$10,500
KOMATSU BR380JG Jaw Crusher, Track Mount	POR
MORBARK 2348 Flail Chiparvestor, Top Load	\$110,000
MORBARK 30 Chiparvestor	POR
MOXY MT31 Articulated Dump Truck, low hours	\$92,500
OLATHE 867TG 10' Tub Grinder, recent work	\$49,500
PETERSON 5900E Disc Chipper,Cat 760HP, low hr	POR
TRAILMAX Tilt Trailer, 30T, 3 axle	\$19,750
WAGNER L480 Log Stacker, price reduced	\$29,500
WASHINGTON 127W, Skookum 90" Trailer Mount	\$35,000

TRUCKS

Freightliner 1994 Serco 160 Self Loader	\$29,500
KW T800 Dump 2005,Cat C12 low mi.,drop axle	\$55,000
Mack Dump 1995, 400HP, Drop Axle	\$24,500



DOOSAN Log Loaders LOTS OF INVENTORY!



2005 KW T800 Dump, Cat C12, low miles, Drop Axle\$55,000



WASHINGTON 137W Slackline Yarder, excellent!.....\$189,500

KETO • WARATAH • SOUTHSTAR • EAGLE CARRIAGE

Rich Lennox (360) 508-0192
John Welch (360) 520-2082
Shannon Pesicka (360) 507-0542

Mike Duch (360) 880-6955
Jim Wark (360) 623-5219
Cooper Brunoff (360) 880-7534

John Griffin (425) 210-9702
Tony Foglio (360) 520-7084

Bill Pantier • Doosan Parts: (360) 508-6294 Cell
Traci Brunoff • Sales Coordinator: (360) 880-7531

www.cascadetrader.net

Find us on Facebook

(360) 748-1182

fax (360) 748-1198 •
Located at Exit 79 off I-5
1380 NW State Ave., Chehalis, WA 98532

FEATURED IN THIS MONTH'S ISSUE

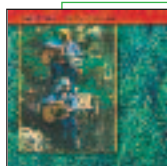
GLENTROOL

Glentrool is where George Bourne is from. It's located in **Southwest Scotland**, 20 miles from **Newton Stewart**. The area's economy is primarily based on agriculture, forestry and tourism. **The British Isles** are ideal for tree growth, and roughly **13 percent** of Britain's land surface is wooded and that number is increasing after it was severely depleted during the **First and Second World War**. In Britain, **30 percent** of wooded areas are public land and **70 percent** is private.



George Bourne is in America on an 18-month visa working for Miller Timber in Philomath, Oregon.

Logging Music recently re-released and re-mastered!

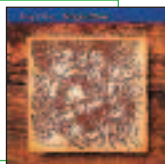


The Snag Fallers Ball
\$15.00
Plus Shipping

"The Snag Fallers Ball" - A light hearted collection of original songs about logging in Oregon and Alaska, and was first released in 1988. Craig wrote nine of the eleven songs on the album and co-authored two others with Don Beck, a long time friend, logger and musician also from the small town of Mapleton, Oregon.

"Endangered Species" - In 1989 Craig & Terry went back into the studio to record their next album. Craig wanted to share his point of view through music which addressed some of the political issues facing the logging industry at that time.

Endangered Species
\$15.00
Plus Shipping



You Hold Me Still
\$15.00
Plus Shipping

"You Hold Me Still" - In 1992 after many requests to record a gospel album they again returned to the studio and recorded eleven original songs. Two of the songs are co-written - one with Don Beck and one with Rick Barrows.

ALL 3 CD'S
Snag Fallers Ball, Endangered Species & You Hold Me Still

\$40.00
Plus Shipping



Songs from the Siuslaw
\$20.00
Plus Shipping

"Songs from the Siuslaw" (pronounced SY-u-slaw) is a heartfelt tribute to the hard working men & women in the logging industry and dedicated to the many men who have lost their lives doing one of the most dangerous and unappreciated jobs in the world. This a double CD set that was recorded live in Florence, Oregon in 1999 at the Florence Events Center. The first CD is saw-shaped and will play in top-loading and tray-loading CD players ONLY. It comes with a 20-page booklet filled with humorous lyrics and old logging photos.

Order on their website for fastest service:

www.ctmusicoregon.com

Or if you prefer not to order on-line you can call them at: 541-268-6910

SAVE \$1,000'S IN 3 EASY STEPS WHEN SELLING YOUR EQUIPMENT WITH RSI MACHINERY

- NO SALES COMMISSION
- NO CONTRACTS
- NO RISK



info@rsimachinery.com

503-339-5757

ADDITIONAL VIDEO AND PICTURES @ www.RSIachinery.com



HITACHI 200 Loader, 2006, 14,300 Hrs, Very Clean, Undercarriage 80%, Pumps and Rotec redone, Recent overhead on Isuzu engine, Jewel Grapples**\$107,500**



2015 Doosan 225 with 2013 Pierce Pacific Grapple Processor, Set up to change to grapples or other processor heads, 856 Hours, Excellent Condition.....**\$295,000**



GENERAL Lowboy 60 Ton, Very Good Condition, 22ft Deck, 8ft wide with outriggers**\$26,000**



2008 Komatsu 228, Solid Mount Rotobec Grapples, Auxiliary Hydraulics, Great for Brush Piling, Shovel Logging, etc., 3750 Hours, Very Good Machine**\$95,000**

1999 722 Timber King Feller Buncher with new 201 Cat 360 degree head. Multiple upgrades. Runs Great**\$120,000**

D4H Cat with new motor, track pads and rails**\$75,000** Good Condition

Please visit www.rsimachinery.com for pictures and video



From Across the Pond

.....
George Bourne travels from Scotland to Oregon, learning different logging methods along the way

By Brandon Hansen
For Loggers World

A lot of people will tell you logging is logging. But even in Loggers World own subscription base, loggers tend to differ on terms and methods. Now imagine being a logger from another continent.

(Continued on Page 9)
See "Bourne"

ON THE MOVE

George Bourne operating a Ponsse Harvester on steep ground. Bourne, 23, began using a chainsaw as a teenager, and attended Barony College where he studied forest machine operation, taught by Paul Fotheringham - earning his machine operators tickets for harvesters and forwarders.

GEM SPROCKETS



.404

and

3/4



**Unique Design
Longer Wear Life
Less Chain Stress & Stretch
Improved Cleaning & Cooling**

GEM Supply Solutions:

**Consistent
Availability**

**Fast Turn
Around**

**In Stock
Inventory**



**INCREASED RUN TIME
LONG TERM DURABILITY
CONSISTENT PRODUCTIVITY**



GEM
Chain Bar



800-455-8471 sales@gemchainbar.com
www.gemchainbar.com

GEM .404 & 3/4 Pitch Products:

**Harvester Bars - Rim Sprockets
Replacement Tips - Measuring Wheels
Bar Repair - Chain - Chain Loops**





Simington Sqaure-Chisel Saw Chain Grinder

Get top performance from your pro chain saw by sharpening its square-ground-chisel saw chain with a Simington grinder.

The Simington #S451-C features:

- Die-cast aluminum body
- Flex-mounted work light
- Diamond-tipped dressers
- Grind-angle adjusters
- Reversible fan-cooled motor
- Carbide-tipped tooth locators
- Tripod work stand included



\$999.

MADSEN'S
SHOP & SUPPLY INC.
Centralia, Washington

☎ 360-736-1336
Information Calls
☎ 800-822-2808
Direct Order Line
www.madsens1.com

ON THE RISE

George Bourne operates a Ponsse Bear on steep terrain in Southwest Scotland near Sanquhar in 2015. George worked for four years for Dumfries-based company J.D. McBurney Ltd., owned by David McBurney. He spent the first two years operating a John Deere 1470D harvester and the next two operating a Ponsse Bear. He won a competition on "Forest Machine Operators Blog" with this photo.



Need Financing? We Can Help!

We Finance Loaders, Trucks,
Skidders, Trailers, etc.

- Working capital available
- Start-up program for under 2 years available
- 1st payment only
- 3,4,5 year financing
- 150K application only
- Finance any equipment or attachment...no age requirement
- Personal one on one financing process
- 27 years' experience in the financing industry

Isn't it time you made an investment in your machinery?

Call Doug Powell Today!

888-223-2600 • dee@fullcircellc.us

After hours call: 509-393-5111

11 Spokane Street - Suite 306, Wenatchee, WA 98801 • www.fullcircellc.us



CC HEAVY EQUIPMENT



2015 Komatsu 240 Log Loader, Less than 2000 Hrs., Excellent Condition \$310,000



1994 Hitachi EX200 Yoder. 2 Speed Pull Master Wide Drums Plus HYD. Guyline. Totally Rebuilt Including: Rotex, Forestry Cab, Boom Line-Bored. Engine has recent work, Pumps Are Sound, Able to Hi-LeadNEW PRICE! \$145,000



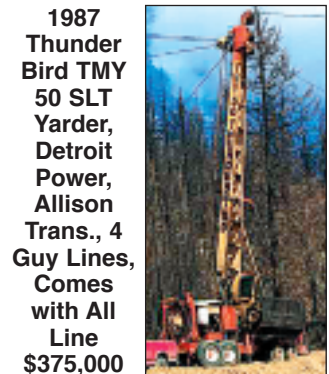
2015 Doosan 300DXLL with Log Max 7000 XT, Forestry Cab, Approx. 2200 hrs., Appears like New Condition!\$349,000



2014 Caterpillar 320 Log Loader, 4400 hours, Jewel Grapple and Rake. Very Nice Machine.....\$220,000



Prentice 210 Truck Mount Log Loader, Runs and Operates well, 5 Stick Controls, on GMC Truck Mount.....\$22,000



1987 Thunder Bird TMY 50 SLT Yarder, Detroit Power, Allison Trans., 4 Guy Lines, Comes with All Line \$375,000



1999 Madill 3800B LOG LOADER, 8200 hrs, Rebuilt 8.3Cummins, Good U/C, 63"Jewel Grapple, FRESH hydraulic pumps, Automatic greaser & Fire Suppression.....\$165,000



1995 Thunderbird TY40 Yarder, Hour meter shows 7498 hours, Comes with lines and rigging, Rebuilt shafts and bearings, Excellent maintenance, Eaglet.... \$150,000



1996 Cat D4H track skidder, Single function grapple and winch, U/C has 1000 hours, Grapple cylinders just redone, 8604 hours on 3304 Cat Engine.....New Price \$65,000



1985 John Deere 550B Crawler Dozer, 10,950 Hrs., 6 Way Dozer with Brush Rake, Winch with Arch, U/C 65%+.....\$24,900



1997 Timbco 415C, 10,332 hrs., 52" Grapple. Has a Rotex and Swivel to allow complete Swing function. Possible processor carrier or If you need a machine to shovel or bunch wood in tight places or steep ground-take a look at this low cost alternative. Tight MachineNEW PRICE \$39,000



2006 Kobelco 210 Log Loader, 17,500 hrs., Forestry Cab, Jewell Boom and Grapple, Very CleanNEW PRICE \$69,000

Looking for a Skycar? We have ACME, Boman and Eagle Carriages For Sale We have Multiple Financing Options Available. Call Today or Visit our Website!

CHECK OUR WEBSITE FOR MORE PICTURES AND DETAILS OF THESE AND OTHER MACHINES



1989 Komatsu PC 400LC-3 Excavator, 22,000 Hrs., 60%+ U/C, Excavator Bucket with Hydraulic Thumb, Very Well Maintained and Ready to Work\$35,000



2016 John Deere 909M with the last Tier III diesel motor! ONLY 165 HOURS! 36' Harvester Boom, 2016 South Star FD 750 Grapple Saw with 48" Harvester Bar. 30' work radius. Grouser Extensions, Tethering Hitch, Auto Greaser, Fire Suppression, LED Light Package, and Oversized grapple valve. This machine is truly like new and ready to go. Over \$650k invested\$569,000



2006 John Deere 2054 Roadbuilder Excavator, Good U/C at 70%. Comes with hydraulic thumb, Just been through dealership shop, Seat was recovered and minor repairs completed, Ready to build roads\$69,500



2001 Kobelco SK290LC Log Loader, Shovel Logger Extreme Package, Jewell Boom and Grapple, Good U/C at 70%+, Clean cab.....\$69,000



1991 Thunderbird 940 Shovel Logger, 9720 hours, Well maintained, NEW undercarriage.....\$55,000



2007 Hitachi ZX350 LL Log Loader, Equipped With 2009 Waratah 624C- 12,000 hrs., Reinforced Frame, 2nd Rotex Tight, Tight Boom. NEW PRICE!!!\$139,000



1997 CAT D5M LGP Crawler Dozer, 9765 Hrs., 6 Way Dozer, Rear Hitch and PTO installed. Undercarriage is 65%+ and Sprocket Segments at 90%. Nice running CAT\$46,500



2011 Kobelco 295 Log Loader, approx 9,000 hours. Rear Entry Cab, New UC\$150,000



CCHEAVYEQUIPMENT.COM

Dallas/Salem Rickreall, OR

**Carl Cornthwaite • 503-507-7230 • carl@ccheavyequipment.com
Lincoln Cornthwaite • 971-901-1333 • lincoln@ccheavyequipment.com**



Rigging Shack

(Continued from Page 2)

I was told in grade school that the three necessities of life are Food, Clothing and Shelter. From our woods come items of food, items of clothing and mainly items of shelter. A home is more than shelter, much more. No nation, no civilization has ever accomplished nearly as much as they could have and should have up to and until their families had a chance to own land and their homes.

See why I am so fiercely proud of loggers?

Back to Carl Giles and his family. For many years they have been handing out pencils, key chains and pens with the phrase on it, "LOG IT OR LOSE IT!" They have caused T-Shirts to be made with this emblem on the back of it. They have printed up little pamphlets that explain the reasoning behind "Log It Or Lose It". Carl, Fay, Mark and Steve have done a great and good job in this area and next month we will have more about them.

Ah, how lucky can one man get? I'm working on one paper and looking forward with ill concealed eagerness to getting started on the next one.

In case I confuse you by including myself under the general heading of 'Logger' let me explain why I do this. First and foremost I spent a quarter of a

(Continued on Page 28)
See "Rigging Shack"

PACIFIC FIBRE PRODUCTS
WANTED
Alder, Maple, Douglas Fir, Cedar
Hemlock, Cottonwood
PULP LOGS
Land & Timber or Timber Only
Paul Hadaller • 360-431-9661
Rob Vance • 360-355-2817
P.O. Box 278, 20 Fibre Way, Longview, WA.
Office: 360-577-7112
**WE ARE NOW PURCHASING
LOGS IN MOLALLA, OREGON!**

**Oliver-Hammer
Clothes Shop**

**Clothing the
Working Man for
96 Years**

Wesco Caulk Boots, Redwing,
Carolina, Carhartt, North Star
Gloves, Hickory Shirts,
Logger "Riggin" Jeans and a
Whole Lot More

(360) 855-0395
821 Metcalf,
Sedro Woolley, WA 98284



HEADING OUT

Another happy customer as a load heads off the jobsite in Oregon for Miller Timber.

Bourne has been operating a forwarder to get logs to trucks in some unsteady terrain.

A strong winter this year has presented west coast loggers with plenty of snow and mud to play in.

What you need now will affect how your business grows.
And that often means getting financial assistance.

BUSINESS EQUIPMENT LOANS

- New / Used/ RPO
- Dealer or Private Party
- Seasonal and Annual Payments
- Start ups
- Engine Overhauls
- Working Capital
- Refinance
- Debt Consolidation

With over 30 years of lending to the forest products industry, Mike can offer solutions for all of your equipment needs. His experience makes the process simple and time saving.

MIKE LOBB

mlobb@bizequiploans.com • www.bizequiploans.com
 CELL: 503-784-3935 • OFFICE: 971-204-0038

New! EAGLE RAPTOR



**NEW!
ELECTRONIC
CONTROLS!**

We
Also Have
Eaglets,
Super
Eaglets,
Eagle IV,
Eagle V,
Eagle VI
& Claws
Available

EAGLE CARRIAGE & MACHINE

**ECM CONTROL ON
ALL NEW MODELS!**

(541) 963-4646

Fax: (541) 963-3415

62500 Commerce Rd, La Grande, OR 97850
 www.eaglecarriage.com

After Hours - Sam Baker
 (541) 805-9504 cell

(Continued from Page 5)

George Bourne, 23, of Glen-trool in Scotland is currently serving an 18-month student visa for Miller Timber in Philomath, Oregon. He began using a chainsaw as a teenager to cut firewood and attended Barony College where he studied Forest machine operation, taught by Paul Fotheringham - earning his machine operators tickets for harvesters and forwarders.

"I like working in the forest," George said. "My favorite thing about the job is I get the look out the window of the machine and see the often amazing view of mountains and forest and say to myself 'who else gets a view like that at work?'"

George worked for four years for Dumfries-based company J.D. McBurney Ltd., owned by David McBurney. He spent the first two years operating a John Deere 1470D harvester and the next two operating a Ponsse

Bear.

"To me Ponsse has always seemed to be a very well-designed and productive machine," George said. "After operating a new 2015 Ponsse Bear in Scotland for nearly two years on some work sites that certainly put it to the test, I have no doubt the Ponsse machines definitely have what it takes to get the job done."

The biggest difference logging in Scotland compared to the Pacific Northwest is the product

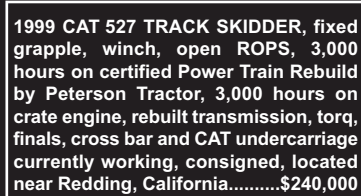
that the sawmills desire, Bourne said. In the United States, mills are looking for bigger, longer logs of high-quality Douglas fir compared to the Sitka Spruce in Scotland.

"Unlike the UK, it is desirable here to grow the trees for longer allowing them to grow much bigger," George said. "The sawmills in the UK don't really want logs bigger than 27 inches."

(Continued on Page 13)
See "Bourne"



1997 CAT 527, Esco swing grapple, bunching grapple, 6-way dozer, tri-rails, near-new V-Trac rails/sprockets, 15,075 hours on meter.....\$152,000



1999 CAT 527 TRACK SKIDDER, fixed grapple, winch, open ROPS, 3,000 hours on certified Power Train Rebuild by Peterson Tractor, 3,000 hours on crate engine, rebuilt transmission, torque, finals, cross bar and CAT undercarriage currently working, consigned, located near Redding, California.....\$240,000



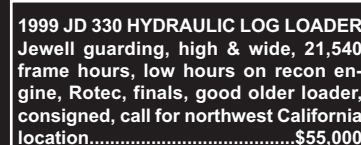
1993 CAT 518C, grapple, NO winch, good 23.1 tires, 18,000+ hours.....\$35,000



2002 PRECISION HUSKY 66-23, Husky XL-175 loader, CAT 3412, 700/750 hp, Tier I, joy sticks, twin-disc clutch, feed table w/feed chain, cab, 12 new tires, good brakes, fresh oil, new paint, recent injectors, one owner, was working daily, 11,141 hours.....\$99,500



MIGHTY MITE 4A BAND SAW, Wisconsin gas engine, trailer mounted, all controls, owner estimates it was used 6 times, like new, consigned.....\$21,500



1999 JD 330 HYDRAULIC LOG LOADER Jewell guarding, high & wide, 21,540 frame hours, low hours on recon engine, Rotec, finals, good older loader, consigned, call for northwest California location.....\$55,000



NEW HEEL RACK FOR CAT 330FM OR 568FM, unused, some pins.....\$7,500

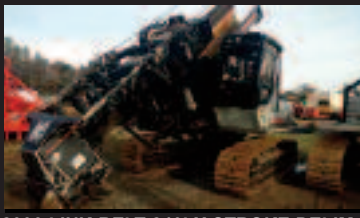
MPI
EQUIPMENT
INCORPORATED

Call Chuck 24/7
530-221-6760

8537 Commercial Way Redding, CA 96002
chuck@mpiequipment.com
www.mpiequipment.com



1996 CHRISTY 3DTK YARDER, 6 cyl. Cummins, 2,000' 3/4" sledge skyline, approx. 2,000' 5/8" mainline, haywire, guy lines, NO carriage, 75mhz radio system, 6,500+ orig hours, Freightliner w/Cummins, heavy 2-speed rear ends, biscuit suspension, good clean unit, worked until October 2015, owner downsizing, call for location.....\$75,000



2006 LINK-BELT 240LX STROKE DELIMBER, Pierce Deliminator upper, 16,000 hours, working until 12/2015, good for age and hours.....\$62,500



1999 THUNDERBIRD 1236DL, Pierce HSD 3345 upper, good working order, just off job, estimated 17,062 hours, consigned, call for location.....\$52,500



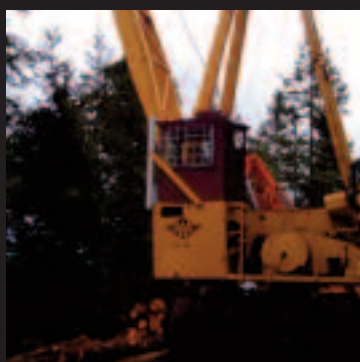
1999 CAT D6R XL, semi-U blade w/tilt, rear ripper, differential steer, 90%+ UC w/ extreme service pads, rock guards, sweeps & screens, 6,883 orig hours consigned, call for location.....\$100,000



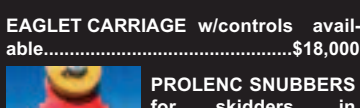
1995 COZAD BABY 9-AXLE 2+2+2 LOWBED, 9' wide x 26' deck, drop sides, power tower in jeep w/20 hp Honda, 4 pin settings. Following items are NEW: all wheel studs, all 11R22.5 tires, all drums, all brakes, all bearings, all slacks, all S-cams, all lights, all wiring, all air lines, all air valves, all apitong deck, all oil caps, all seals, all air bags, all paint + more.....\$135,000



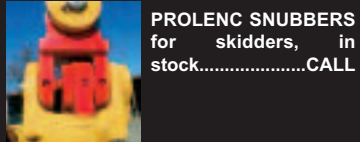
2006 COZAD, 16-wheel, 60-ton, expando w/new Hydra neck in 2010, disc brakes, good 17.5 tires, 22'6" x 8'6" deck, consigned, in our yard.....\$70,000



WASHINGTON 188 YARDER, Detroit 8V92T power, 4-axle carrier, standing skyline. This is a good, clean unit that was working as of 06/10/16. Consigned, call for location.....\$250,000



EAGLELET CARRIAGE w/controls available.....\$18,000



PROLENC SNUBBERS for skidders, in stock.....CALL



2005 ZEHR HG4000 GRINDER, early Diamond Z, 2009 CAT C27, Tier II, 1,050 hp, remote, stacking conveyor, 8 NEW tires, good brakes, twin-disc clutch, hamermill approx. 62" x 17"\$129,500



MORBARK 20 CHIPPER, new CAT C13 with 3,684 hours, 385 hp, Tier III, new tires, good brakes, lights.....\$69,500



2007 BANDIT 3590 CHIPPER, 37" drum, CAT C18@700 hp, feed chains, remote, super singles, consigned, call.....\$109,000



2013 CAT 930K, QC, bucket, 2,495 hours, prior rental machine, very nice condition, just arrived.....\$120,000



2005 CAT 972G II, Medford log forks, new 26.5R25 tires, command steering, 16,604 hours, tight & dry, very good for age and hours.....\$99,500



2004 CAT 966G II, CAT QC, good 26.5x25 tires, cab, AC, 13,112 hours, good runner.....\$77,500



2009 CAT 140M VHP, Tier III, 14' board, rear ripper, push block, 14-00x24 radials, AC, heat, 3,836 hours.....\$140,000



2012 VOLVO G990, Tier III, 265 hp, Volvo 11 speed transmission, 16' board, push block, rear ripper, joy stick controls w/steering wheel, 20.5 radials, super clean, prior demo rental unit, 967 hours, snow wing available.....\$150,000



2010 JD 872GP, 6WD, 14' board, rear ripper, push block, NEW 17.5x25 radials, cab, AC, heat, radio, 8,876 hours, NEW paint, just arrived.....\$135,000



2006 JD 772D, new 14Rx24 radials, 6-wheel drive, 14' board, rear ripper, push block, cab, AC, 9,368 hours, snow wing & front lift group available.....\$85,000



2012 KOMATSU PC200LC-8, JRB QC, link hydraulic thumb, 36" bucket, 3,432 hours, rental machine.....\$92,000



2012 VOLVO ECR58, off-set boom, blade, rubber tracks, open ROPS, aux. hyd., 744 hours, prior rental.....\$42,500

Oregon Logging Conference

More than 6000 industry professionals from 37 U.S. states, Australia, Brazil, Canada, Estonia, Finland, Japan, New Zealand, Russia, and Sweden attended the 79th Annual Oregon Logging Conference (OLC), held February 23 – 25, 2017 at the Lane County Events Center and Fairgrounds in Eugene, OR.

Approximately that same number or probably more from local schools and the general public participated in the various activities associated with OLC on Saturday when the show was open free.

"The 79th conference surpasses the successful event from 2016, with more than 250 exhibitors displaying in over 90,000 sq ft. of inside exhibit space and millions of dollars of logging, trucking, construction and heavy equipment displayed on over 14 acres of outside exhibit area," OLC Conference Manager Rikki Wellman said.

79th Annual OLC President Jeff Wimer said the success of the conference shows that the

logging and related industries are thriving. "Quality speakers spoke to packed rooms during the keynote address, panel sessions and seminars, presenting timely information on hot topics in the industry today." These topics included steep slope logging, state-of-the-art technology, and how to attract a new generation of professionals into the industry.

"Equipment exhibitors were happy with the interactions they had with those attending the conference, and the overall attitude was positive," Wimer said. "Even the weather cooperated, at least for the most part, during the conference."

Keynote speaker Merv George Jr., Forest Supervisor of the Six Rivers National Forest in northern California told a capacity crowd that collaboration is a key to moving forward. "If I have a gift, it's getting people to work together," George said.

(Continued on Page 11)
See "OLC"



What do you want a hot rod but you NEED a Log Loader? You wrap your loader in a cool vintage bomber themed wrap! It's every bit as cool as a custom striped and lettered log truck.

Cascade TRADER inc.
EQUIPMENT SALES - LOGGING & CONSTRUCTION

As seen
at the
Oregon
Logging
Conf.

FREE CUSTOM WRAP
with every **NEW DOOSAN** Loader
purchased in April 2017

Rich Lennox (360) 508-0192	John Griffin (425) 210-9702
John Welch (360) 520-2082	Tony Foglio (360) 520-7084
Shannon Pesicka (360) 507-0542	Bill Pantier • Doosan Parts: (360) 508-6294 Cell
Mike Duch (360) 880-6955	Traci Brunoff • Sales Coordinator: (360) 880-7531
Jim Wark (360) 623-5219	
Cooper Brunoff (360) 880-7534	

www.cascadetrader.net
360-748-1182

fax (360) 748-1198 •
 Located at Exit 79 off I-5
 1380 NW State Ave., Chehalis, WA 98532

**Handmade in Spokane,
carefully fit, leather
caulked boots**

There is no better
quality boot

Guaranteed fit,
even remotely

*It's about time you had a
GOOD pair of boots!*

from
\$481

www.Nicksboots.com/product/woodsman • www.nicksboots.com/sizing guide

800-824-2685

photo by Craig Tomlinson



2017 Oregon Logging Conference President, Jeff Wimer taking care of some last minute details.

Jeff started out logging but is now applying his knowledge to the younger generation at Oregon State University.

You may remember Jeff's excellent commentary on the Wayne Stone operation we featured in the September 2015 issue of Loggers World



OLC

(Continued from Page 10)

"We can do anything when people decide to come together." He urged more focus on active management on federal land, because without it he predicted more large fires. "The amount of money being spent on fire suppression is staggering," he said. And he suggested the money being used for fire suppression be put towards timber sales instead.

EDUCATION

Education Day at OLC was Thursday, February 23rd, when 800 elementary school students from nine schools had an up close and personal opportunity to learn about logging and related industries. Students from Eugene, Springfield, Coburg, Cottage Grove, and Pleasant Hill were guided by OLC board members and forestry professionals to get a first hand look at equipment and other aspects of the industry.

High School Skills Competition – 28 students from three Oregon high schools competed for top honors in this logging competition. Student from Philomath, Sweet Home, and for the first time, Tillamook High Schools competed in choker set-

ting, cable splicing, crosscut sawing, power bucking, and arbor climbing. These students are learning the skills necessary to become the next generation of the logging industry.

LOG LOADER COMPETITION

8th Annual Log Loader Competition – You might recognize the names of the winners of this year's log loader competition, as they are the same as last year, but in a slightly different order. 25 operators competed to see who could complete the challenge in the faster time. This year's winners are:

First Place – 3:14.75

Bryan Chipps, Green Diamond Resource Company, Korbel, CA

Second Place – 3:20.25

Ross Cribbs, Van Well Timber Co, Dallas, OR

Third Place – 3:23.31

Zane Bryant, Bryant Logging Co., Beaver Creek, OR

All of these activities and more will be part of the 2018 Oregon Logging Conference, February 22, 23, and 24. Mark your calendar now, as OLC will celebrate the 80th Annual gathering. New and exciting plans are also in the works!



YOUR FORESTRY EQUIPMENT PARTNER



2006 Cat 330D FM
S/N H3K00226
12,913 Hrs., ready to work

\$170,000



1996 Cat 330L LL
S/N 5YM01688
21,924 Hrs., ready to work

\$42,000



2000 Cat 140H
S/N 22K05497
13,515 Hrs., ready to work

\$83,500



2014 Cat 420F 4ETCB
S/N JWJ01766
1,241 Hrs., ready to work

\$88,400

N C MACHINERY



For More Information Call:

Gib Gilbert | 253.606.2029 | rgilbert@ncmachinery.com
or

Mike Livers | 425.508.1665 | mlivers@ncmachinery.com

Offer expires May 31, 2017. All equipment subject to price change and/or prior sale. All units FOB current N C Washington branch location. Contact your N C Sales Representative for details.



photo by Craig Tomlinson

LOG LOADER COMPETITION

25 operators competed to see who could complete the challenge in the faster time.

This year's winners are:

First Place – 3:14.75
Bryan Chipps, Green Diamond Resource Company, Korbel, CA

Second Place – 3:20.25
Ross Cribbs, Van Well Timber Co, Dallas, OR

Third Place – 3:23.31
Zane Bryant, Bryant Logging Co., Beaver Creek, OR

Ponsse's Scorpion harvester is showing off its flexibility.

L&L, Inc.'s Ponsse Scorpion was on the cover of the November 2016 issue of Loggers World



photo by Craig Tomlinson

This sweet old Diamond T Log Truck is part of the Hull collection. Look for more coverage of their collection coming up sometime this summer in Log Trucker.



A new John Deere 1270G is on its way to Stafford Reload, Inc. in Sweet Home, Oregon.



Looks like Wolfco Timber Services, LLC in Lebanon, Oregon will be getting a new Tigercat.

Bourne

(Continued from Page 9)

Bourne had not traveled before coming to Oregon but has an idea to plan to travel for work in Canada and maybe even New Zealand. He's begun his stay for Miller Timber, hoping to learn about logging in America, spending an average of 10-12 hours on a forwarder hauling logs out and loading trucks.

"At Miller Timber, I work

alongside my supervisor Mark Willhite who has so far put up with my endless questions about logging in America," George said. "Miller Timber has been very accommodating and helpful with getting the visa to make sure I have everything I need. The support is fantastic."

Bourne has been appreciative of his coworkers, including CTL manager Matt Mattioda who is happy to have the imported Scottish operator.

"It's been a huge adjustment moving to Oregon," George said. "Very few things are the same." The Scot has had to switch from using metric to imperial measurements and clear cut methods to thinning along with the various forest fire prevention methods.

"It's a very different mindset," George said. "Leaving behind the

(Continued on Page 16)
See "Bourne"



End Greasing Frustration

**Grease goes in,
not on, the machine!**



ORDER ONLINE:
LockNLube.com
Lock and Lube
343 Dorchester Road
Lyme, NH 03768
(603) 795-2298

CALL US FOR ALL YOUR DOOSAN NEEDS

**Ask about our
Finance and Lease
Specials!**

DOOSAN

Authorized Dealer

- Parts
- Service
- Sales
- Rental
- Lease



Serving the Northwest Since 1901

(503) 282-2566

Fax: (503) 282-1755

4800 N.E. Columbia Blvd., Portland, Oregon 97218

feenaughty.com

(541) 636-3660

541-357-4542

9404 Highway 99 N., Eugene, Oregon 97401

KENWORTH T800 4-AXLE CHASSIS



15 Trucks
To Choose From
YOUR CHOICE
\$55,000

Cummins ISX Engines, 18-speed trans. (RTLO18918B), Single speed Eaton rear-ends 4:10 or 4:11 gears w/locker, Hendrickson Haul-max walking beam susp.

#15 R118642 2006, D46-170HP rears, 252" WB, 475hp...**\$55,000**

#26 R087301 2005, D46-170HP rears, 253"WB, 475hp...**\$55,000**

#32 R087306 2005, D46-170HP rears, 253"WB, 475hp...**\$55,000**

#35 R087305 2005, D46-170HP rears, 251"WB, 475hp...**\$55,000**

#96 R087295 2005, D46-170HP rears, 250"WB, 475hp...**\$55,000**

#99 R054031 2004, DSP-463P rears, 250"WB, 475hp...**\$55,000**

#57 R383012 2003, DSP-463P rears, 250"WB, 475hp...**\$55,000**

#67 R391038 2003, DSP-463P rears, 250"WB, 475hp...**\$55,000**

#113 R897697 2002, DSP-463P rears, 250"WB, 475hp...**\$55,000**

#115 R897698 2002, DSP-463P rears, 251"WB, 475hp...**\$55,000**

CLEAN AND IN EXCELLENT SHAPE!
Maintenance Records - Regular Oil Samples
For More Info: www.irelandtrucking.com

Thomas H.
IRELAND
INCORPORATED

Call Charles Ireland
541-863-1501
Myrtle Creek, OR



IN A LINE

George Bourne operates a 2008 John Deere 1470D harvester near Newcastleton, Scotland in 2014 for J.D. McBurney Ltd. based out of Dumfries, Scotland. The company is owned by David McBurney and Bourne worked for the company for four years. They're cutting 10 different lengths of Sitka spruce.

For Qualified Owners We Offer...

The Alternative

To High Worker's Comp Rates!

"In March of '04 I got hit... Hard! I spent weeks in the hospital and had months of Rehab.

*High Cascades Insurance and their **Alternative Plan** were there for me. My disability checks always arrived on time! You can count on High Cascades Insurance!"*

Paul Russell, Russell Resources, Winlock, WA

Call today for more information!

866-514-3356 Toll-Free!

360-274-6991 • 25 A Street SW, Castle Rock, Washington 98611

Wayne Lunday, LUTCF, CLU, ChFC

Aaron Lunday

Gail Mowrey, ACSR, CMSR, CRIS

Commercial Insurance Manager



A full-service, True Multiline Agency
Dedicated to the Logging and related Industries
Licensed in WA, OR, CA (OD43750), ID & MT
Commercial Insurance, Personal Insurance, Life, Disability Income,
and Individual and Group Medical Plans

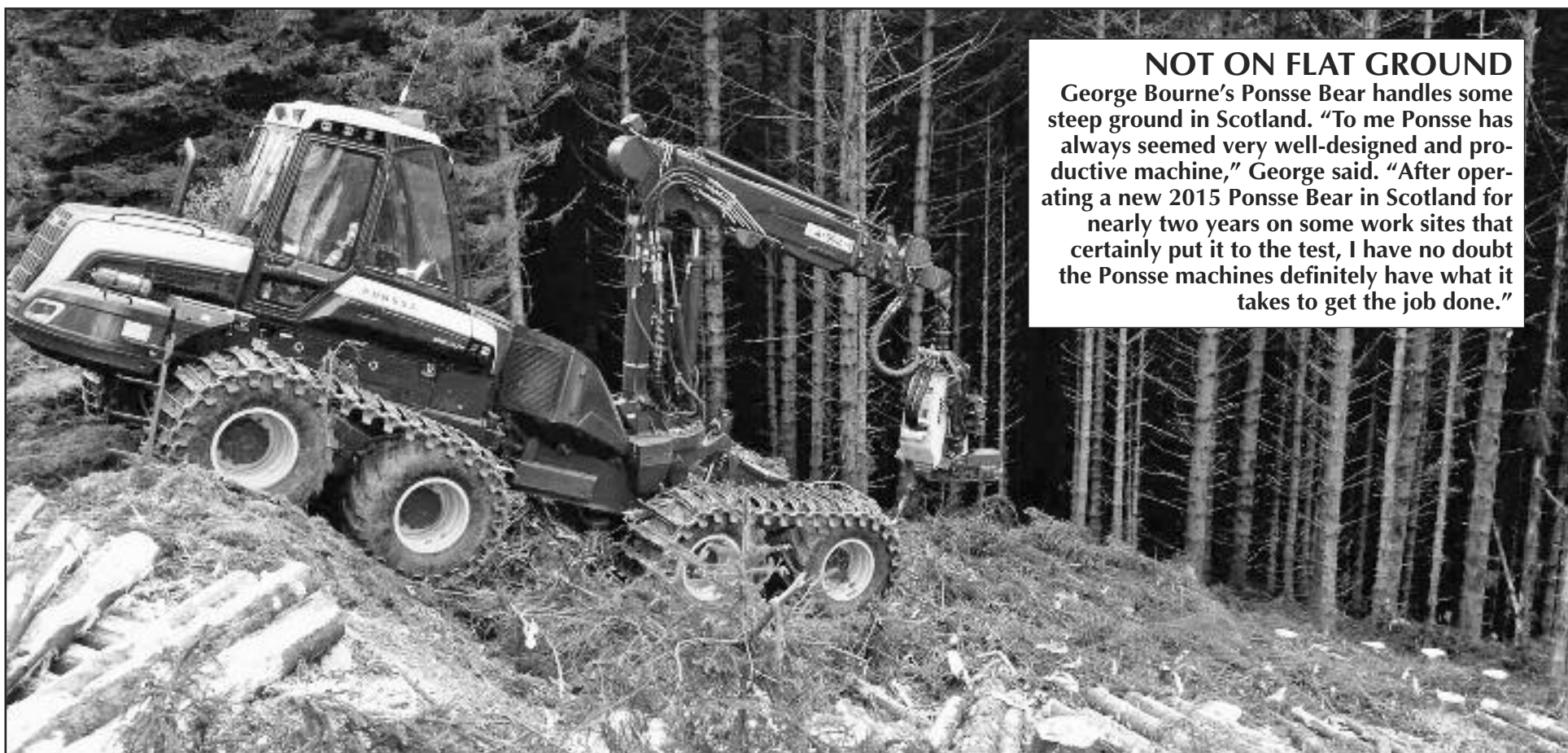


Full Service Shop

Full Service Rigging, Saw Repair & Work Clothing

www.LoggingSupply.com

Toll Free 1-800-488-3127



NOT ON FLAT GROUND

George Bourne's Ponsse Bear handles some steep ground in Scotland. "To me Ponsse has always seemed very well-designed and productive machine," George said. "After operating a new 2015 Ponsse Bear in Scotland for nearly two years on some work sites that certainly put it to the test, I have no doubt the Ponsse machines definitely have what it takes to get the job done."

WRECKING LOGGING EQUIPMENT

EXCAVATORS • CRAWLER TRACTORS • ROCK TRUCKS • LOADERS • GRADERS

Parting Out



2001 Timbco 425D

Parting Out



2012 Deere 2454D

Parting Out



2004 Deere 160CLC

Parting Out



2005 Cat 525B

Parting Out



2002 Deere 544H

Parting Out



1992 Cat 936F

Parting Out



2007 Hitachi ZX270LC3

Parting Out



2003 Link-Belt 210LX

Parting Out



2007 Hitachi ZX350LC3

Parting Out



2010 Komatsu WA500-6

FRALEY TRACTOR, Inc. WRECKING DIV.

(509) 884-7117 • FAX (509) 884-3959 • fti2@nwi.net • 1850 GRANT RD., E. WENATCHEE, WA 98802

CAT EXCAVATORS

314C; 315BL; 320LL; 320BL; 320C;
322CL; 320DL; 325L; 330BL;
345BL; 345CL; 350L

CAT TRUCKS

D25D; D250E; D300E; D400D

CAT SKIDDERS

D5H; D4H; 525; 527; 525C

CAT SCRAPERS

615,621E

CASE

821; 9030B; 9040B; 9050; 9050B;
9060B

GROVE

RT745

LINK-BELT

210LX; 240LX; 290LX;
4300 CII-Q; 5800 CII-Q; 6000Q

KOBELCO

ED150; SK290LC6; SK200LC IV;
SK400LC IV; SK330

JOHN DEERE

120C; 160DLC; 200DLC; 230LC;
2554; 310SE; 330CLC; 350DLC;
450DLC; 550H; 544J; 544G;
600CLC; 624G; 644H; 644G;
648GII; 690E; 710D; 750B-C; 744H;
753GL; 772BH; 850J; 992D-ELC

SAMSUNG

SE 350LC2

TIMBCO

T425B-C-D; T445B-C-D; T445EXL;
475D; 475EXL

TIMBERKING

TK722; TK1162

KOMATSU

PC120-6; PC130-6; PC138US-2;
PC150-5; PC160LC-7; PC200LC-6;
PC220-6E; PC228USLC-3;
D155AX5; D355A; WA 200-1;
WA180-1; WA400-1; WA320-1;
WA180-3; WA250-3; WA500-1

TIMBERJACK

608; 628; 1210B; 2628; 1270B

HITACHI

ZX27U; ZX120; EX150; EX160;
ZX200LL; EX200-5; EX60;
EX200LC3; EX220-3; ZX330
ZX350LC; EX330LC5; EX400LC3;
ZX450LC; EX550LC5; EX700;
EX750-5

VALMET

EX10; 500T; 860; 892

VOLVO

A25C 6x6 Rock Truck; L330C;
L120E; L180C; L220E

WE BUY HEAVY EQUIPMENT FOR PARTS AND RESALE...CALL US!

Visit us on the web at: www.fraleytractorinc.com



(Continued from Page 13)

best possible selection of trees that will eventually lead to a flourishing crop to clear cut."

Oregon is very different from what Bourne is used to as loggers on this side of the Atlantic have adopted different methods including the lingo.

"If I use a term or phrase from Scotland here, no one knows what I mean so I'm constantly translating in my head," George said. "For example, the process of delimbing a tree in Scotland is called snedding but here I believe it's called bucking."

Challenge is the name of the game when it comes to logging and that is George's favorite element of the job. Every day presenting a new challenge is something that appeals to him.

"Change, new experiences and new challenges always keep things interesting," George said. "If you love your job you'll never work a day in your life."



BIG LONELY DOUG
George Bourne got to see the second-biggest Douglass fir in Canada during his travels. With an 11-foot diameter and a height of 216-feet, it dwarfs Bourne - who you can see at the base of the tree if you look closely (see arrow).



www.acmecarriages.com

FORTRONICSTM LTD
FORESTRY ELECTRONIC CHOKER SYSTEMS

ACME
Manufacturing Inc.

90099 Prairie Road
Eugene, OR 97402

Phone 541-741-2200

After Hours: 541-554-9414





STACKING UP

George Bourne operates a Ponsse Buffalo King as snow greets his arrival in Oregon. Bourne is serving an 18-month student visa for Miller Timber in Philomath, Oregon. Since the harvester he had intended on operating has been in the shop, Bourne's forwarding experience has paid off working in Oregon. Here he working on Douglas Fir thinnings on a Springfield tree farm.



**ZENDER EQUIPMENT
COMPANY**

Contact: Kevin Zender (360) 319-7973

Rod Hansen (360) 520-6849

Bob Howell (541) 913-9559

Email: kevin@zenderequipment.com

rod@zenderequipment.com • bob@zenderequipment.com

www.zenderequipment.com • Everson, WA

LOG LOADERS

2013 Cat 324DFM, w/Cat grapple, 9,900 hrs, auto greaser, good u/c, xlent cond.....	\$180,000
2014 Cat 568, w/Cat grapple, 5,800 hrs, good u/c, xlent cond.....	\$320,000
2012 Cat 568, w/Cat grapple, 9,400 hrs, auto greaser, very nice loader.....	\$280,000
2013 Cat 568, w/Cat grapple, 8,200 hrs, xlent loader.....	\$265,000
2006 Cat 330DFM, w/Pierce grapple, 12,000 hrs, forestry cab, new hyd pump, c/w 12000 Log Max.....	\$220,000
2013 Cat 320DFM, w/Cat grapple, 5,500 hrs, new u/c, xlent cond.....	\$190,000
1995 Cat 325, w/Pierce grapple, 23,500 hrs, good u/c, Young front.....	\$50,000
2015 Doosan DX300LL, w/Jewell grapple, 3,300 hrs, like new cond.....	\$205,000
2013 Doosan DX300LL, w/Jewell grapple, 5,000, w/added grapple pump.....	\$190,000
2006 JD 2054LL, w/Pierce grapple, 8,500 hrs, good cond, forestry cab.....	\$90,000
2014 JD 2954D LL, w/Jewell grapple, 3,500 hrs, like new cond.....	\$265,000
2006 JD 2454, w/Pierce grapple, 8,000 hrs, forestry cab, new motor, good u/c.....	\$115,000
2006 JD 2054LL, w/Tong thrower package & Jewell grapple, recent u/c, 15,700 hrs.....	\$117,500
2013 Hitachi ZX-240, w/Pierce grapple, forestry cab, 8,000 hrs, new motor, xlent cond.....	POR
2004 Link Belt 240 LL, w/Pierce grapple, 20,000 hrs, recent pump.....	\$50,000
2008 Kobelco SK 350, w/Jewell grapple, 11,500 hrs.....	\$115,000

DELIMBERS

2012 JD 2154, w/2012 Waratah 622B, 8,850 hrs, very good cond.....	\$145,900
2004 JD 2554, w/04 Waratah 624 Super, 18,500 hrs, good u/c, 2000 hrs, rblt motor, pump.....	\$85,500
2006 Hitachi ZX200, w/06 Waratah 622B, 16,800 hrs, very nice processor.....	\$85,000
2010 Cat 320DFM, w/2010 Waratah 622B, recent drive motors and bushings, very good machine.....	\$95,000
2006 Cat 330DFM, w/Log Max 12,000, c/w heel & grapple, 12,000 hrs.....	\$220,000
2006 Cat 320C, w/06 Waratah 622B, 14,000 hrs, road builder front, 80% u/c.....	\$95,000
2013 Link-Belt 290X2, w/2013 Waratah 623, full rotation, 6000 hrs, very good cond.....	\$390,000
2006 Link-Belt 240LX LL, w/06 Waratah 622B, new drive motors & bushing in head, rblt motor, 18,500 hrs.....	\$135,000
2004 Komatsu PC300, w/04 Waratah 624 Super, 19,000 hrs, good u/c, 2000 hrs rblt motor, recent pump.....	\$130,000
2016 Doosan 225, w/Pierce GP, low 700 hrs on carrier, like new cond, 3000 hrs, on GP head.....	\$205,000
2008 Doosan 225, w/Waratah HTH 620, recent Axis complete rebuild on head.....	\$135,000
2003 Neuson 182 MHT, w/Log Max 5000, tilting carrier, work 60% slope, boom 32' reach, w/blade.....	\$132,500
2007 Waratah 622B, w/comp & controls, recent bushings, good cond, drive motors.....	\$45,000
2004 Waratah 624 Super, w/comp & controls, recent drive motor and bushings, good cond.....	\$50,000
2002 Cat 325C, w/02 Waratah 622.....	\$40,000
1999 Cat 322B, w/2004 624 Waratah, auto greaser on carrier and head, extended frame.....	\$145,000
2010 Cat 324DFM, w/Pierce 3348, xlent cond, 14,000 hrs.....	POR
2001 Cat 320B, w/DT 4400, recent repairs & spare parts, 14,000 hrs.....	\$80,000
2013 Link-Belt 290X2, w/Denharco 4550, xlent cond, 8,900 hrs, new boom avl.....	\$210,000
1998 T-Bird 1236, w/DM 3500, good running limber.....	\$35,000
2005 Madill 1236, w/DM 4400, good u/c, recent bushings, nice cond.....	\$60,000

ROAD BUILDERS

2014 Cat 568, digging & clean out bucket & thumb, pin grabber, 7,500 hrs, very good cond.....	\$275,000
2005 JD 330C, w/digging bucket & thumb, 5,300 hrs.....	\$95,000
2013 Cat 325DFM, w/digging & clean out bucket, 2800 hrs.....	\$290,000

BUNCHERS

2014 Tigercat LX830C, Tigercat 5702, 350 rotation saw, 5,300 hrs, u/c 80%, xlent cond.....	\$392,500
2010 Tigercat LX830C, Tigercat 5702 saw, owner operator machine, nice cond.....	POR

2007 Tigercat LX870C, 23" Tigercat 5702 saw, new Cummins power, good u/c, 10,100 hrs, xlent cond.....	\$175,000
2007 Tigercat L870C, 23" Tigercat 360 saw, 4000 hrs, rblt motor, tilt pins, rblt pump, hyd cyl & saw, good u/c.....	\$125,000
2016 Tigercat LS855D, w/5195 felling saw, summit tethering ele. Installed, only 900 hrs, like new cond.....	POR
2016 JD 909M, w/FD 750 48" South Star falling head, auto greaser, tethering pkg, tier 3 power, like new.....	\$565,000
2007 Madill T2250C, w/24" 350 rotation, 13,200 hrs, recent motor, pump, u/c, saw motor & disc.....	\$165,000
2011 Valmet 450 FXL, w/Quadco 22" 360 rotation head, good u/c, good pins & bushings.....	\$235,000
2004 Timbco 445EXL, w/Quadco 22" saw, 40 degree tilt, 80% u/c, 13,500 hrs.....	\$97,500
2001 Timbco 445D, w/Quadco 22", c/w 32" bar saw, new Cummins motor, lots of other repairs, 13,500 hrs.....	\$90,000
1999 Timbco 445D, w/32" bar saw, runs good, xlent u/c, recent motor & pump.....	\$65,000
Cat 2440 Hot Saw, 24" saw, 40 degree tilt, new bearing.....	\$12,500
2005 Timbco 445EXL, w/Quadco 2900-360 rotation, 11,000 hrs, recent u/c, motor & pump.....	\$160,000

SKIDDERS & DOZERS & GRADERS

2014 Tigercat 610C, front rubber 70%, new rear rubber, 3,100 hrs, very nice skidder.....	\$185,000
2006 JD 848GIII, 9000 hrs, new chains, good rubber.....	\$87,500
2010 JD 748H, bunching grapple, dual frctn boom, rears 90%, front 30%, 1 set chains, 5200 hrs.....	\$125,000
2006 JD 648G III, dual frctn bunching grapple, 8,000 hrs, good cond, new rubber on back.....	\$85,000
2004 Cat 525B, swing boom, bunching grapple.....	\$80,000
1999 TJ 460, new chains, fixed boom, 40% rubber, good running skidder.....	\$65,000
1999 JD 648GIII, w/chains, fixed boom, 18,000 hrs.....	\$35,000
1996 JD 648E, w/fixed boom, good rubber, w/chains, 13,000 hrs.....	\$35,000
1996 Cat D5H TSK, w/fixed boom & winch, recent trans, motor & u/c, 7 roller machine.....	POR
1995 Cat D4H TSK w/ grapple & winch new motor, rails and shoes 8,000 hrs.....	\$87,500
2012 Cat 517, swing boom, only 2,800 hrs, auto lube system, new rails & shoes, like new cond.....	\$250,000
Dresser TD15, w/grapple, single frctn boom, w/tilt blade, good u/c, nice dozer.....	\$28,000
Cat D7F, w/winch.....	\$25,000

YARDERS & SWING YARDERS

Madill 122, just completed major rebuild, 8V92 power, 3 guyline.....	\$375,000
Washington 78SL, 3 guyline, rblt Detroit 6V71T power, good u/c, nice cond, run all logging systems.....	\$140,000
1982 Washington 118, major rebuild last year, new 8V92, air & hyd systems, New wheeler single lever controls.....	\$275,000
Madill 071, Detroit 8V71T, recent bearings in drum set, 4 guyline, good u/c, 1 1/8" machine.....	\$105,000
Madill 071, Detroit 8V92T water on all drums, 4 guyline, good lines, nice yarder.....	\$110,000
Madill 071, Detroit 8V71, 3 guyline excellent u/c, good lines.....	\$85,000
T-Bird TTY40, on hyd u/c, recent Cat power, very good cond., c/w Acme car, radios.....	\$195,000
T-Bird TMY 50, Detroit 8V92T, good lines, nice yarder.....	\$365,000
Skylead SC40, trl mount, Cummins power, water on haulback, c/w rblt Eaglet car & rigging.....	\$115,000
T-Bird TMY 45, track mount, 2014 Super Eaglet, recent drum bearings, low hrs motor, w/radios, rigging.....	\$220,000
T-Bird TMY 45, trl mount, rblt Cummins power, c/w Eagle 2 car & rigging, M-123 GI truck avl.....	\$85,000
T-Bird TMY 45, self prop on rubber, rblt 903 Cummins & torque, good lines, ready to log.....	\$72,500

MOTORIZED CARRIAGES

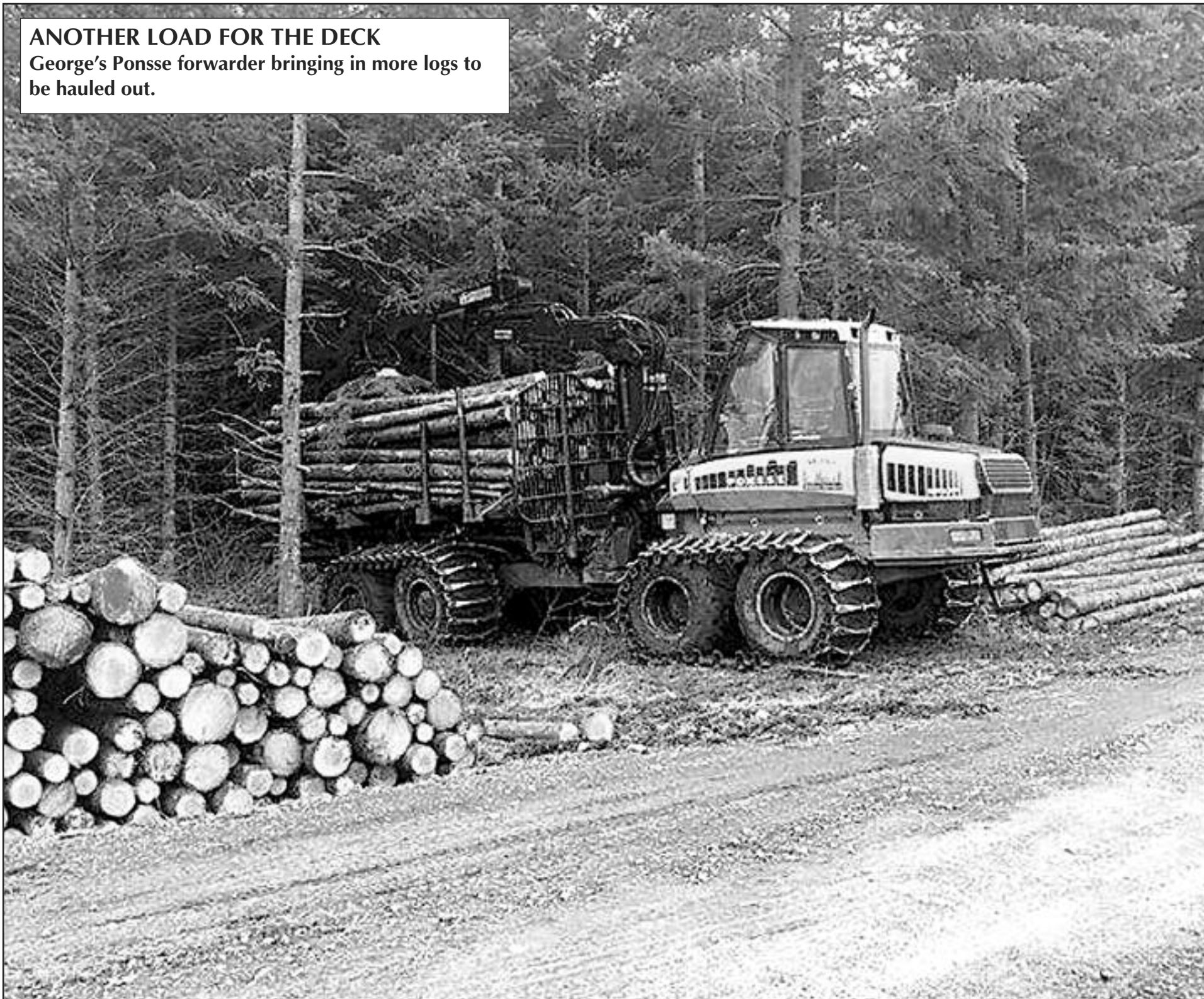
2010 Boman M5, good cond, w/radios, 340 hrs.....	\$42,500
--	----------

TRUCKS & FIRE TRUCKS

2015 KW T800, 14K miles, w/Cummins ISX 550 hp, Pederson trl w/pole reach, stinger.....	POR
1991 International 9300, 16' Alum box, steel bottom, rblt Cat 3406B, 18 speed, Dt 402 rears & Hendrickson spring over walking beam, new clutch, c/w Sturdy Weld 3 axle, 1 lift axle, Alum transfer trl over walking beam, new clutch, c/w Sturdy Weld 3 axle 1 lift axle Alum transfer trl.....	\$70,000
Sturdy Weld, 3 axle, 1 lift axle, Alum steel bottom pup trl.....	\$30,000

ANOTHER LOAD FOR THE DECK

George's Ponsse forwarder bringing in more logs to be hauled out.



USED PARTS FOR

CONSTRUCTION & LOGGING MACHINERY

Crawlers, Loaders, Trenchers, Excavators,

Backhoes, Skidders, Skid-Steers,

Engines and Transmissions

"Rely on our Experience - Est. 1967"



1-800-626-6046

**Schaefer
Enterprises**

4535 St. Rt. 3 N. • P. O. Box 136, Wolf Lake, IL

www.sewlparts.com - parts@sewlparts.com

Most Major Credit Cards Accepted

Great Buys

2009 Tigercat LX830C Feller
Buncher with ST5702 saw, 8,099
hours, Portland # 020724
.....*Call for Pricing*

2008 Link-Belt 290LXTLFC,
forestry cab, GCCV-anti drift,
catwalk step, Pierce TC52 grapple,
13,579 hours, Portland # 021080 .
.....*Call for Pricing*

2006 Valmet EX10 Harvester with
Valmet 370-2 harvesting head,
9,550 hours # 019195....\$145,200

2005 Link-Belt 240LXDHP with
Waratah 622 head, 11, 345 hours,
019405*Call for Pricing*

2005 Link-Belt 210LX, w/LogMax
7000, 7200 hours, Spokane, WA,
#018155.....\$185,000

2004 Tigercat L870, single
grousers, ST5702 hotsaw, new
under carriage in 2012, 17,850
hours, #020000.....\$144,500

2003 Link-Belt 240LXDL with Pierce
3348 delimber, 17,762 hours,
Prineville # 021123..*Call for Pricing*

Sales ▴ Rentals ▴ Service ▴ Parts

Portland | Eugene | Prineville | Seattle | Spokane

800.221.8512

800.342.6780

888.662.2940

800.622.8876

800.945.9168

Link-Belt
EXCAVATORS • FORESTRY
EQUIPMENT • HARVESTING

Tigercat

Kawasaki

www.triadmachinery.com

TRIAD
MACHINERY
CONSTRUCTION
AND FORESTRY



THE VIEW AINT BAD

"At Miller Timber, I work alongside my supervisor Mark Willhite who has so far put up with my endless questions about logging in America," George said. "Miller Timber has been very accommodating and helpful with getting the visa to make sure I have everything I need. The support is fantastic."



*Join us for this year's conference in beautiful Victoria B.C.
April 26 - 28, 2017*

The Future Grows On Trees

Check out our speaker lineup, program
and registration at www.olcnw.com
Questions? Call: 360-202-7014

HELP WANTED

Diagnose, adjust, repair, or
overhaul mobile mechanical,
hydraulic, and pneumatic
equipment, such as backhoes,
bulldozers, graders, and yarders,
used in construction, logging, and
also dump trucks, lowboys.

Contact Kate Lankford at 907-965-4222
or papacalaska@aptalaska.net

STACKING UP

While working in Scotland, George operated this 2013 Logset 8F for two weeks in 2014. This job was near Newcastleton, Scotland on a 15,000-ton job. This is 6-foot pallet wood.



MONTANA TRACK CLAWS, Incorporated

**NEW
PRE-SEASON
INVENTORY
Get Them While
They Last!**



**Hundreds of
Satisfied
Customers
Coast to Coast**

Track Claws are reusable, quick connect traction devices that require no welding or cutting.

Their unique "V" design provides penetrating traction while minimizing side slippage for improved safety.

Track Claws can be installed in minutes using only a ratchet and socket. No pad bolts are used in the installation - they bolt through the clean out hole using a special bottom plate (included) and a zinc plated grade 8 bolt.

Durable and reusable, **Track Claws** are made of higher grade material than track pads. Then they are heat treated creating a durable product that can be reused many times.

Track Claws are available for all popular styles of track pads including single, double and triple grouser bar styles. For pads without cleanout holes, a template will be provided.

**New Style Available that
fits Multiple Machines!**

Call or email for details



Phone Calls between Noon and 9pm Mountain Standard Time please

Montana Track Claws, Inc. 888-293-2529

1250 Big Bend Rd., Libby MT 59923

fax: 406-293-2267

Website: www.montanatrackclaws.com • Email: mail@montanatrackclaws.com



79th Intermountain LOGGING CONFERENCE & Equipment Show

April 5-7, 2017

Maribeu Park Hotel & Convention Center
Spokane Valley, Washington

Program Theme:

**"Professionals We Call Loggers:
Times Changed, We've Changed"**

**For More Information Call:
208-245-3425**

www.intermountainlogging.org



IN THE WOODS

Shorty Foster operating Miller Timber's 2015 Komatsu 931 harvester on a Springfield tree farm thinning Douglas Fir. "At Miller Timber, I work alongside my supervisor Mark Willhite who has so far put up with my endless questions about logging in America," George said. "Miller Timber has been very accommodating and helpful with getting the visa to make sure I have everything I need. The support is fantastic."

DONALDSON & LANDRY, INC. MACHINE SHOP

Hydraulic Cylinder Repair or Remanufacture

- ✓ Rod Straightening and Re-Chrome
- ✓ Manufacturing of all Major Components, Barrels, Rods, Pistons and Glands, Meets or Exceeds OEM specs.
- ✓ Large Cylinders are our Specialty
- ✓ Free Estimates

Full service manual machine shop and welding for all other repairs or manufacturing of components
Engineering Available

503-286-5855

www.Donaldson-LandryInc.com • 8916 NE Vancouver Way, Portland, OR 97211

24 hour, 7 days a week emergency service available



**Clark 667
Skidder,**
Cummins,
swing boom
grapple
\$17,500



Cat 315 BL Parting Out



**CAT
D6C
\$18,500**



**Deere
648G**
Dual funct.
arch, chains,
rebuilt trans.
\$33,500



**Cat 518
55U**
w/swing
boom,
working daily
\$18,500



Cat 315CL Parting Out



CAT D342
High HP.
rebuilt
CALL



**Link-Belt
4300
Quantum**
Parting Out



DUKES
PARTS & EQUIPMENT
509-952-9223

204 Butterfield Rd., Yakima, Wa 98901 Shop: 509-469-9420

Check us out online: www.dukesheavyequipment.com



How We See It...

Teamwork Matters

by Danny Dructor

I recently wrote an article for the New Hampshire Timberland Owners and the New Hampshire Timber Harvesting Council entitled "Teamwork Matters."

Before I finished writing the article, I had already decided that the topic was important enough that I should try and convey the message to all of you who are on the front lines of the timber harvesting industry and who take the time and opportunity to come out of the woods and be proactive on the issues that are impacting the industry.

At the ALC Board of Directors meetings, we have managed to cuss and discuss many issues over the past 23 years, including master logger certification, H2b visas, woody biomass, the Canadian Softwood lumber tariffs, truck weights, the US Forest Service Timber Sale program, trucking regulations, safety regulations, IRS rules for heavy use vehicles, and a whole host of things that are of importance to the well-being of the timber harvesting industry. We are currently

taking an active role in the industry TEAM Safe Trucking issue, hoping that we can assist in improving driver safety and assuring that there are qualified, insurable drivers in the industry.

Because of the ability for the Board members from the 32 states that the ALC now represents to be able to sit down and work out policy and position statements that are beneficial to all is indicative of the teamwork that takes place in order for us to maintain our status as "The National Voice for Loggers."

We have all managed to educate ourselves and each other on the issues that are seemingly regional in character but actually national in scope, and we all speak with one voice on the issues that we are concerned with. Our dialects vary from region to region, but the hearts and minds of those participating in the discussions are one and the same.

We try and monitor legislation at the federal level that would have an impact on logging businesses, and more oftentimes than

not now, have members of Congress reaching out to us asking, "What do the loggers think?" We also monitor some state level legislation when it becomes apparent that there might be a trend in the works from state to state making something more of a national issue.

This would not be possible without the dedication of the volunteers who make the yearly trek to Washington, DC and have formed relationships with members and staff on the Hill and that oftentimes look forward to their visits. Members of the American Loggers Council continue to make that yearly trek, and represent the industry very well.

Later this month, March 29-30 to be exact, those men and women from the logging profession will once again travel to Washington, DC representing you and your profession. Be sure and thank them for their dedication

and time promoting this industry that we all have in common. You might even ask them how their trip went and what discussions did they have with members of Congress.

While there are other organizations that do a great job at representing other sectors of the forest products industry at the local, State and Federal level, the fact remains that many of the issues that are important to the logging industry are not on the radar of the other associations. Our focus is and will remain representing professional timber harvesters at the national level. The American Loggers Council and the State and Regional logging associations; loggers working for loggers.

That's what we do. Teamwork!

Danny Dructor is the Executive Vice President for the American Loggers Council, residing near Hemphill, Texas.

The American Loggers Council is a 501 (c)(6) not for profit trade organization representing professional timber harvesters in 32 states across the United States. If you would like to learn more about the ALC, please visit their web site at www.amloggers.com, or contact their office at 409-625-0206.

7th Annual Logger's Reunion

Honoring Crown Zellerbach Cathlamet

at the Appelo Archives Center

Saturday April 15th, 2017 at 10am

Appelo Archives Center

1056 State Route 4

Naselle, WA 98638

info@appeloarchives.org

360-484-7103

If you have questions about this event, or if you would like to share photos, etc. Please contact the Center.

- All are welcome to attend.
- Cake and coffee will be served.
- Food available for purchase.
- Re-tell and Re-live old stories.

Appelo Archives Center

Logging Museum, Library and Bookstore



Our best selling book:

"When Logging Was Logging" is available for purchase in store, online, and over the phone!

1056 SR 4 Naselle, WA 98638

360.484.7103

info@appeloarchives.org

www.appeloarchives.org

The Appelo Archives Center specializes in preserving and presenting the history of the Naselle-Grays River Valley area of SW Washington. The Archives offers a museum, local genealogy, library, archival material, and bookstore.

Open Tues.-Fri 10am to 4pm and Sat. 10am-2pm

Photo:

Deep River Logging Co.'s Shay No. 5 at the Deep River log dump, 1912.





Summary Judgment...

Will the Supreme Court Finally Get It Right on Race?

by William Perry Pendley

With Judge Neil Gorsuch of Colorado on his way to Senate confirmation, the Supreme Court of the United States can return to considering a full plate of challenging constitutional issues, including one left unresolved for over two decades, whether Congress may award government contracts on the basis of race.

In 1995, in *Adarand Constructors, Inc. v. Peña*, a tiny “mom and pop” company from Colorado Springs, Colorado, challenged a federal program that used race to award highway projects. In a 5-4 ruling by Justice O’Connor, the Court struck down two earlier rulings that permitted Congress to make decisions based on race, and then ruled that Congress itself is subject to the equal protection guarantee: “[A]ny person, of whatever race, has the right to demand that any governmental actor subject to the Constitution justify any racial classification subjecting that person to unequal treatment under the strictest judicial scrutiny.” Although she insisted “strict scrutiny” is not always “fatal,” that is most often the case.

Time called the ruling “a legal earthquake.” In response, President Clinton said he would “mend [affirmative action], not end it,” but he spent his last days in office vigorously defending race-based programs. Republicans, who controlled Congress, had the chance to end the programs but, lacking political courage, agreed with Democrats to “leave it up to the courts.” Then, lawyers for George W. Bush defended Congress’s ability to enact race-based programs. Although the *Adarand* case ended, its 1995 victory remained a controlling legal precedent. Soon, however, the Court lost its way as demonstrated by a 2003 dissent filed by Justice Scalia scolding his colleagues for denying certiorari in a test of race-based, government contracting because it “invites speculation that [Adarand] has effectively been overruled.” “We should...make clear that we stand by [our] insistence that [r]acial classifications are suspect... and that the courts will employ ‘searching judicial inquiry into the justification for such race-based measures... to [‘]smoke out[’] illegitimate uses of race.”

es of race.”

Enter President Obama, his radical team, and their “racialist agenda,” through which everything was racial. From the “2009 stimulus”—not meant for “white, male construction workers,” through Dodd-Frank, which set up racial quotas, to the scheme by the Federal Aviation Administration to hire air traffic controllers based on race, racial policies dominated.

Meanwhile, a tiny, brave Texas company, Rothe Development, Inc., fought against the use of race in the awarding of Information Technology (IT) and Communication contracts by NASA and the U.S. Department of Defense. Susie Patenaude received her B.A. degree in education with concentrations in mathematics and business from Southwest Texas State University (the Texas State University). For years she taught high school math, then she and her husband bought Rothe and she became its president. She quickly discovered why they lost contracts on which they submitted the low bid—racial quotas!

Rothe spent years and thousands of dollars fighting racial preferences and won. All along Rothe insisted the courts apply *Adarand*, believing that the programs could not survive “strict scrutiny.” Then, Rothe challenged the race-based set aside in the Small Business Act—8(a)—and appealed a ruling by a federal district court that the program is constitutional. To everyone’s amazement, last September, the Court of Appeals for the District of Columbia ruled (2-1) that 8(a) is not about race and that *Adarand* does not apply. The dissenting judge, in a fierce rebuke, wrote that everyone knows 8(a) is about race. Earlier this year, the full appeals court declined to rehear the case en banc.

The judicial landscape has changed dramatically since the panel ruled. Today with a judge in the mold of Justice Scalia soon on the bench, Susie Patenaude has hope. In the days ahead, her attorneys will ask the Court to grant certiorari, reverse and remand the ruling below, and demand application of the principle Justice Scalia announced in 1995: “In the eyes of government we are just one race here. It is American.”

Mr. Pendley, a Wyoming attorney, is President and Chief Legal Officer of Mountain States Legal Foundation and a regular columnist in Loggers World.

NOW AVAILABLE!

The Limited Edition
LOGGERS WORLD
50th
Anniversary
Window Sticker

Only
\$8
each



Please send me
Stickers at \$8 each
Add \$1 for shipping
While Quantities Last

Send your check or Money order to:

LOGGERS WORLD LLC
P. O. Box 1631
CHEHALIS, WA 98532

WASHINGTON RESIDENTS: PAY \$8.77 + \$1 SHIPPING w/sales tax

NAME:

ADDRESS:

CITY:

STATE:

ZIP:

PHONE: ()

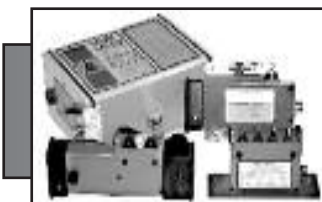
WASHINGTON RESIDENTS: ADD 9.6% SALES TAX
(ALLOW 5 WEEKS FOR DELIVERY)



ROTHENBUHLER ENGINEERING

HOME OF THE *Talkie Tooter*

MARK III WHISTLE CONTROL
now in the 72 MHz band, get away from
congested frequencies with a proven design



CARRIAGE CONTROLS
rugged radios that can control most
manufacturer's carriage from the ground or
the yarder

**Rugged, Durable,
Industrial Radio
Equipment since 1946!**

P.O. Box 708, 524 Rhodes Rd
Sedro-Woolley, WA 98284-0708
Telephone 360-856-0836
www.talkietooter.com

CROWLEY EQUIPMENT, INC.

(541) 688-5924 FAX: (541) 688-0704

MIKE (541) 954-7643 • ERIC (541) 206-2252 • DAN (541) 914-9222

4655 Cloudburst Way, Eugene, Oregon 97402



2014 Cat 568
4,800 Hrs.
P.O.R.



**(2)
Thunder-
Bird
6140's**
Both Ready
To Go
**Call for
More Info.**



**2014
John Deere 2154D RB**
850 Hrs. Thumb, Bucket,
Brush Rake
P.O.R.



**1995
Thunder-
bird
TSY255**
**Call for
More Info.**



1996 Madill 172
Call for More Info.

LOG LOADERS

- 2014 CAT 568
 - 2013 CAT 325D
 - 2012 CAT 568
 - 2012 CAT 325D
 - 2006 CAT 325C
 - 2004 CAT 320C
 - 2003 CAT 322C
 - 2000 CAT 330B W/2 PULLMASTER WINCHES
 - 2013 DOOSAN DX300LL
 - 2015 JOHN DEERE 2154D
 - 2014 DEERE 2954D
 - 2013 JOHN DEERE 2954
 - 2013 JOHN DEERE 2454D
 - 2009 JOHN DEERE 2954D
 - 2008 DEERE 2554
 - 2008 JOHN DEERE 2054
 - 2006 JOHN DEERE 2554
 - 2004 JOHN DEERE 2054
 - 2006 HITACHI ZX200
 - 2011 KOBELCO SK295
 - 2010 KOBELCO SK350
 - 2002 KOBELCO SK330
 - 2016 KOMATSU PC240
 - 2015 LINKBELT 290X2
 - 2007 LINKBELT 370LX
 - 2007 LINKBELT 290LX
 - 2006 LINKBELT 350LX
 - 2006 LINKBELT 210LX
 - 2005 LINK-BELT 290LX
 - 2003 LINKBELT 370LX
 - 2003 LINKBELT 290LX
 - 2000 LINK-BELT 3400Q
 - 2000 LINKBELT 3400Q TONG THROWER
 - 1990 LINKBELT 4300C2 W/2 PULLMASTERS
 - 2001 MADILL 3800C W/2 PULLMASTER WINCHES
 - 1998 THUNDERBIRD 1240
 - THUNDERBIRD 1242 W/2 PULLMASTERS
- ## PROCESSORS & DELIMBERS
- 2013 CAT 568 W/WARATAH 626
 - 2006 CAT 320C W/LOGMAX 7000XT
 - 2003 CAT 322C W/PIERCE 3348
 - 2001 CAT 330B LL W/01 WARATAH 624
 - 1994 CAT 320BL W/WARATAH 620
 - 2007 HITACHI 350 W/09 WARATAH 624C
 - 2006 HITACHI ZX250 W/DM4400
 - 2004 HITACHI ZX330 W/2010 WARATAH 623C
 - 2013 DEERE 2954D W/WARATAH 623C
 - 2011 JOHN DEERE 2454D W/PIERCE 3348
 - 2011 JOHN DEERE 2454 W/WARATAH 622B
 - 2008 JOHN DEERE 2954D W/2010 WARATAH 624C
 - 2007 JOHN DEERE 2554 W/PIERCE 3348

PROCESSORS & DELIMBERS Cont.

- 2006 JOHN DEERE 2554 W/DM4550
 - 2006 JOHN DEERE 2554 RB W/WARATAH 622B
 - 2006 JOHN DEERE 2054 W/WARATAH 622B
 - 2006 JOHN DEERE 759G W/WARATAH 470
 - 2002 JOHN DEERE 230LC W/DM4400
 - 2009 KOBELCO SK260 W/LOGMAX 7000XT
 - 2006 KOBELCO SK290 W/WARATAH 622B
 - 2007 KOMATSU PC270LL W/WARATAH 622B
 - 2016 LINKBELT 4040 W/WARATAH 623C
 - 2015 LINKBELT 240X2 W/PIERCE 3348
 - 2013 LINKBELT 290X2 W/PIERCE DM4550
 - 2013 LINKBELT 240X2 W/WARATAH 622B
 - 2010 LINKBELT 240 LL W/WARATAH 622B
 - 2008 LINKBELT 290LX W/2012 PIERCE GP HEAD
 - 2006 LINKBELT 240LX W/622B
 - 2004 LINKBELT 240LX W/PIERCE 3348
 - 2005 MADILL 2800B W/WARATAH 622B
 - 2004 MADILL 1800 W/WARATAH 624
 - 2012 TIMBERPRO TL735B W/14 LOGMAX 7000XT
- ## FELLER BUNCHERS
- 2016 CAT 552
 - 2016 JOHN DEERE 909 W/SOUTHSTAR GRAPPLE SAW
 - 2016 JOHN DEERE 859M
 - 2013 JOHN DEERE 959K
 - 2012 JOHN DEERE 959K
 - 2015 KOMATSU XT450L-2
 - 2014 KOMATSU XT445L-2
 - 2013 KOMATSU XT450L-2
 - 2016 TIGERCAT L870C
 - 2015 TIGERCAT L870C
 - 2014 TIGERCAT L870C
 - (2) 2014 TIGERCAT LX830C
 - 2009 TIGERCAT LX870C
 - 2005 TIGERCAT L870
 - 2005 TIGERCAT LX830C
 - 2006 TIMBCO T445EXL W/40° QUADCO
 - 2006 TIMBCO T445EXL
 - 2003 TIMBCO T445E
 - 2000 TIMBCO T445D
 - 2014 TIMBERPRO TL745B
 - 2013 TIMBERPRO TL735B
 - 2010 TIMBERPRO TL735B W/QUADCO 2900
 - 2011 VALMET 450FXL
- ## SKIDDERS / DOZERS
- 2014 CAT 535C

SKIDDERS / DOZERS Cont.

- 2003 CAT 525B W/ESCO SWING BOOM
 - 2001 CAT 527
 - 2000 CAT 527
 - 1999 CAT 527 GRAPPLE/WINCH
 - 1996 CAT D5H GRAPPLE/WINCH
 - 1995 CAT 525 W/ESCO SWING BOOM
 - 1994 CAT D5H W/ESCO SWING BOOM
 - 1988 CAT D4H GRAPPLE/WINCH
 - 1979 CAT D7G
 - 1978 CAT D6D W/GRAPPLE
 - CAT D7F W/ESCO SWING BOOM
 - CAT 977L
 - 2010 JOHN DEERE 848H
 - 2006 JOHN DEERE 848G
 - 2005 JOHN DEERE 650J W/WINCH
 - 1988 JOHN DEERE 550G W/RIPPERS
 - 2013 TIGERCAT 610C
 - (3) TIMBERJACK 380B'S
- ## CHIPPERS / GRINDERS
- 2002 BANDIT 1900
 - MORBARK 30RXL
- ## YARDERS
- CHRISTY HD YARDER
 - DIAMOND D210
 - KOHLER K501
 - 1996 MADILL 172
 - (2) MADILL 071
 - (2) SKAGIT 739
 - (2) THUNDERBIRD 6140
 - 1989 THUNDERBIRD TMY70
 - (2) THUNDERBIRD TMY50
 - (2) THUNDERBIRD TMY-40
 - THUNDERBIRD TSY255
 - THUNDERBIRD TY90
 - THUNDERBIRD TY-40
- ## EXCAVATORS
- 2014 JOHN DEERE 2454 RB
 - 2014 DEERE 2154D RB
 - 2005 DEERE 3554 RB
 - 2005 HITACHI ZX200 LONG REACH
 - 2010 KOBELCO ED150-2
 - 2007 KOBELCO SK350 RB
- ## MISCELLANEOUS
- 2014 CAT 966K
 - 2013 CAT 966K
 - 2009 CAT 950H
 - CAT 977L
 - EXC. HEEL/GRAPPLE
 - 2016 FECON BH80
 - 2007 FECON BH80HD
 - MEDFORD LOG FORKS
 - 2006 VALMET 890.3
 - 1994 VALMET 860 FORWARDER
 - 2007 WARATAH 624
 - 2006 WARATAH 622B
- ## PARTING OUT
- LINKBELT 210LX BOOM
 - THUNDERBIRD TSY-155



2001 Madill 3800C
2 Pullmaster HL25-4 Winches
P.O.R.



2014 Tigercat LX830C
5,400 Hours
P.O.R.



2012 John Deere 959K
6,300 Hrs.
P.O.R.



2013 Tigercat 610C
3,000 Hrs.
P.O.R.

www.crowleyequipment.com



2000 Cat 527
8 Roller, Will have Complete
New U/C
Call for More Info.



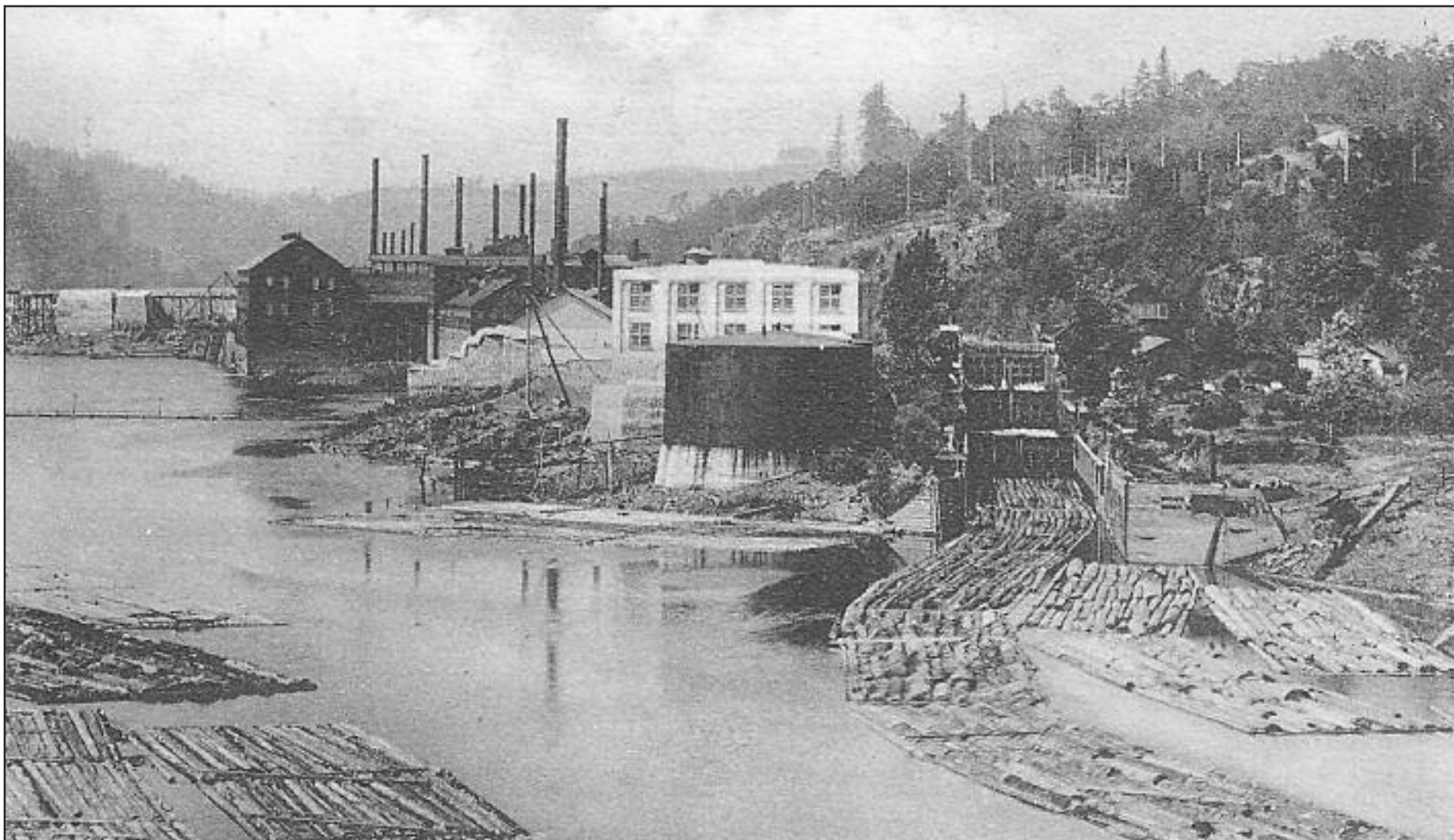
2005 John Deere 3554
8,900 Hrs., Just line bored en-
tire boom, Would make a great
base for a tethering machine,
\$120,000



1995 Cat D5H TSK
8 Roller Track Frame, ESCO
Swing Boom
\$100,000

BLAST FROM THE PAST

BY
QUINN J.
MURK
FOR
LOGGERS
WORLD



PAPER MILL AT WEST LINN

A while back I submitted a picture of Crown Willamette's paper mill with the Willamette Falls locks in view. Log rafts were in the locks, and the mill was actually out on an island in the river. This view of the same mill is looking upriver. It clearly shows the locks, the mill on the island, and log rafts leaving the locks. Also a good look will spot that all of the locks are full of logs. At one time, the locks were a busy place on the river. Now that there is little or no commercial traffic on the river, they are only used occasionally by sport and pleasure craft.

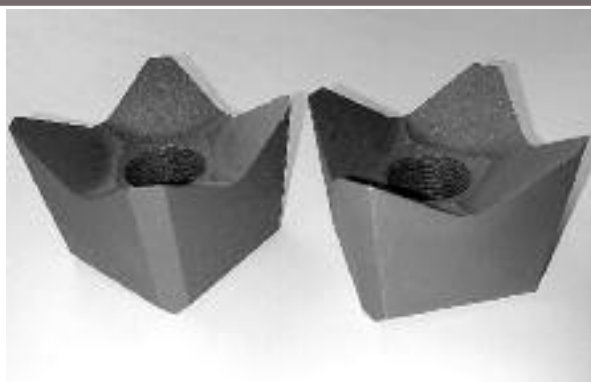
SHOW AND SELL

Send your Black and White or Color photo and a description of what you are selling (try to keep it within 20 words - 1 item per ad) and we'll publish it in Show & Sell for just \$100.00. Mail (or email to logworld@aol.com) your information to Loggers World LLC, P.O. Box 1631, Chehalis, WA 98532. Deadline is 5th of the month preceeding publication.



2007 Cat 525C, 52500292, 11100hrs., 35.5 X 32 26 ply FS., heavy axles, new pivot shaft, no leaks, 20K in recent repairs, complete Cat dealer records., New DD 7/8" chains
\$78,000 OBO

970-471-5647 pinemartenlogging@yahoo.com w



Hot Saw Teeth, Replaces Quadco part # Q10233T 2-5/16 with a 1 inch bolt. **\$15 EACH**
Can ship any place in the USA for \$15 dollars a box, Call **Jim Riendeau** 603-915-0623 U



1999 Kenworth T800 Log Truck, quick change, retarder, 3406E Cat, complete rebuilt trailer, drop axle, new tires, Excellent Cond.
\$55,000 Call **Dan** 541-842-0345 nc

SHOW AND SELL

Send your Black and White or Color photo and a description of what you are selling (try to keep it within 20 words - 1 item per ad) and we'll publish it in Show & Sell for just \$100.00. Mail (or email to logworld@aol.com) your information to Loggers World LLC, P.O. Box 1631, Chehalis, WA 98532. Deadline is 5th of the month preceeding publication.



Stuart M3 or M4 Tank, from yarder, 90%U/C
\$3,000 \$2,500 OBO 541-659-4303 leave a
clear message or I can't call you back. w



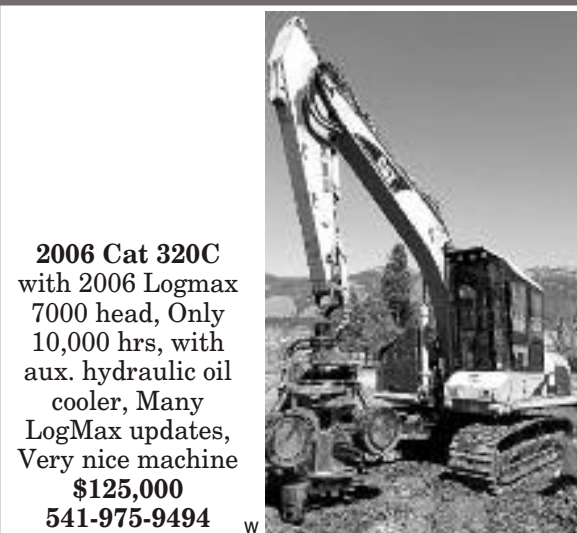
TY-40 Thunderbird, Excellent, work ready,
new Cat 3116 engine, California Compliant,
cleanest yarder on the market **\$160,000 Offer**
It's got to go! **541-914-8618** w



2013 Cat 522B, 2900hrs, F7C00231,
Intermittent hyd. saw package, high draw-bar,
24" sgl bar pads, cold weather package, 22"
Risley 1922b, complete Cat dealer records,
warranty till May '17, **\$310,000 OBO**
970-471-5647 pinemartenlogging@yahoo.com w



The Old Man is 80 and says **SELL IT!!**.
Portable Chip Blower, Salvage Chips from
wrecked or Disabled trucks puts them in
another trailer. Call with questions. **\$9,500**
OBO Or Trade ????? 541-849-3278 w



2006 Cat 320C
with 2006 Logmax
7000 head, Only
10,000 hrs, with
aux. hydraulic oil
cooler, Many
LogMax updates,
Very nice machine
\$125,000
541-975-9494 w



Firewood Processor, new condition, \$6500
209 532 4974 w



1973 Athey Military Forklift ARTFT6, S/N
E1429, Detroit Diesel 4-53, 923 hours, 6000lb
capacity, 12 foot telescopic lift, 4WD. New
batteries, all controls work. **\$7500 928-339-488** w



Waratah HTH 20 with top saw, large feed
wheels, 3/4" butt saw, approx 4,000 hrs, lots of
new parts, complete with computer controls &
computer **\$20,000 OBO 541-659-4303** leave a
clear message or I can't call you back. w



2014 Cat 325DFMLL, C8L01641, 2005hrs, 60"
grapple, 28" dbl pads, Auto lube, complete Cat
dealer records, factory warranty til July '17
\$295,000 OBO
970-471-5647 pinemartenlogging@yahoo.com w



2008 Cat 522, 52200253, 9850hrs, Intermittent
hyd. package, arctic package, 24" sgl bar pads,
numerous updates and repairs, complete Cat
dealer records **\$135,000 OBO 970-471-5647**
pinemartenlogging@yahoo.com w



2013 Keto 870B w/topsaw, 3/4" butt saw,
3800hrs, W/ motomit computer, **\$70,000 OBO**
970-471-5647 pinemartenlogging@yahoo.com w



2004 Valmet 445 EXL with 385 sn 518 head
\$105,000 Call 541-915-0323 w

BLAST FROM THE PAST

BY QUINN J. MURK FOR LOGGERS WORLD

LOGGERS WORLD APRIL 2017

A SLEIGH LOAD

Tremendous loads from the Northern Forests used to be moved in the winter-time. Loads like this 20,000 footer could be easily pulled by two horses from the landing to the dump, on properly built ice roads. To start such a load moving, the horses would lean into their harnesses and on the count of three, four men with large wooden hammers called "persuaders" would strike the sleigh runners. The shock would break the frozen bond with the ice, and the load would start on its way. Ice roads were carefully maintained. At night, water would be sprinkled on the roadbed and ruts cut into the frozen ice by a rut cutter. During the day, straw would be placed in the ruts on downgrades to slow the load down. In addition, a man would be following the load, kicking the horse droppings of the road. He was called a "chickadee," not a glamorous title for a not too glamorous job.



Rigging Shack

(Continued from Page 7)

century logging in Washington, Oregon, Canada and Alaska. Secondly I spent some time calling on loggers at their jobs and in their homes. Thirdly I have been in the business of traveling from logging operation to logging operation taking pictures and seeking information for 15 years and last and least I still putter around with getting out a few logs.

My wife and I have a small place and most of it is covered with trees and brush. I cut wood and get out some logs and do other things. I don't do much of it but I do enough so there is always someplace stiff and sore and most always some place healing up from being debarked. Several times a year we ship a load out to a local sawmill. This sawmill saws these logs into

lumber and then we have it hauled back home.

Now to us this lumber is precious so we store it inside and store it in neat piles with sticks between layers so the lumber will dry and will season. I have found that it takes about half of the lumber to make storage sheds for the other half.

Now I have no purpose in owning this lumber but trust that some day such a purpose will occur to me. Lately I have been getting the idea that I'd like to own and look at an old time logging camp bunkhouse. I have a couple of trees that would make sled runners. I have the lumber to build the bunkhouse and I have the old style windows to put in the bunkhouse.

Then it would be there in the yard, an 8 man bunkhouse. Think I'd build it about 12 feet wide and 40 feet long. Make it a side door pullman type not a muzzle loader. I

could tow it around to wherever I wanted to with my skidder.

Why would I want such a thing? What would I do with it? I don't know but if I had it certainly I

could find a use for it.

If I don't start treating Jean (my wife) better I might be living in it.



SUBSCRIBE TODAY! LOGGERS WORLD

"The Logger's Magazine," is concerned with what concerns loggers

12 Issues – 1 Year Subscription

\$25⁰⁰

WA Residents pay \$27.40 w/tax
Inside U.S.A.



I BUY LOG SKIDDERS



- **Dozers**
- **Loaders**
- **Excavators**

1-503-545-0007

Offer expires
December 31, 2017

LOGGERS WORLD

Send your check or Money order to:
LOGGERS WORLD LLC
P. O. Box 1631
CHEHALIS, WA 98532

○ \$25.00 for 1-Year Subscription ○ \$50.00 for 2-Year Subscription
WASHINGTON RESIDENTS PAY \$27.40 & \$54.80 w/SALES TAX

NAME:.....

ADDRESS:.....

CITY:..... STATE:..... ZIP:.....

PHONE: ().....

(ALLOW 5 WEEKS FOR DELIVERY OF FIRST ISSUE)

COMING EVENTS

APRIL

5-7


INTERMOUNTAIN LOGGING CONFERENCE & EQUIPMENT SHOW

MARIBEAU PARK HOTEL
& CONVENTION CENTER
SPOKANE VALLEY, WASHINGTON
FOR INFORMATION CALL: (208) 245-3425

26-28


OLYMPIC LOGGING CONFERENCE

FAIRMONT EMPRESS HOTEL
VICTORIA, BRITISH COLUMBIA
FOR INFORMATION CALL: (360) 202-7014

MAY

19-20


MONTANA LOGGING ASSOCIATION

ANNUAL MEETING
BEST WESTERN GRANTREE HOTEL
BOZEMAN, MONTANA
FOR INFORMATION : (406) 752-3168

JUNE

10-11


DEMING LOG SHOW

DEMING LOG SHOW GROUNDS
DEMING, WASHINGTON
FOR INFORMATION : (360) 592-3051

SEND EVENT NOTICES TO: Publisher, Loggers World Magazine, P. O. Box 1631, Chehalis, WA 98532-8425. Please include your event's symbol. Items used at discretion of the publisher.

Deadline for May 2017 issue: APRIL 12th

Advertiser's Index

ACME MANUFACTURING16	LOCK & LUBE13
APPELO ARCHIVE CENTER.....22	LOGGERS WORLD IRONMART24
BUSINESS EQUIPMENT LOANS.....8	LOGGERS WORLD SUBSCRIPTION29
CASCADE TRADER3, 10	MADSEN'S SHOP & SUPPLY, INC.....6
CC HEAVY EQUIPMENT INC.7	MONTANA TRACK CLAWS20
COWLITZ RIVER RIGGING.....14	MPI EQUIPMENT9
CROWLEY EQUIPMENT INC25	N. C. MACHINERY.....11
CT MUSIC.....4	NICK'S CUSTOM BOOTS ..10
DONALDSON & LANDRY, INC.21	OLIVER HAMMER CLOTHES SHOP.....7
DUKE'S EQUIPMENT21	OLYMPIC LOGGING CONFERENCE19
EAGLE CARRIAGE & MACHINE INC.....8	PACIFIC FIBRE PRODUCTS, INC.7
FEENAUGHTY MACHINERY Co13	PAPAC ALASKA LOGGING19
FRALEY TRACTOR, INC ..15	PERSONS ENTERPRISES ..16
FULL CIRCLE FINANCE.....6	ROTHENBUHLER ENGINEERING.....23
GEM.....5	RSI MACHINERY4
HIGH CASCADES AGENCY14	SCHAEFER ENTERPRISES 18
INTERMOUNTAIN LOGGING CONFERENCE20	SHOW & SELL.....26, 27
IRELAND, INC.....25	TRIAD MACHINERY, INC .18
	TRIPLE T EQUIPMENT18
	WALLINGFORD'S INC.13
	ZENDER EQUIPMENT17

SUBSCRIBE TODAY! LOGGERS WORLD

"The Logger's Magazine," is
concerned with what
concerns loggers

12 Issues – 1 Year Subscription

\$25⁰⁰

WA Residents pay \$27.40 w/tax
Inside U.S.A.



Send your check or Money order to:

LOGGERS WORLD LLC
P. O. Box 1631
CHEHALIS, WA 98532



Offer expires
December 31, 2017

☐ \$25.00 for 1-Year Subscription ☐ \$50.00 for 2-Year Subscription
☐ \$100.00 for 4-Year Subscription

WASHINGTON RESIDENTS PAY \$27.40, \$54.80 or \$109.60 w/SALES TAX

NAME:.....

ADDRESS:.....

CITY:..... STATE:..... ZIP:.....

PHONE: ().....

(ALLOW 5 WEEKS FOR DELIVERY OF FIRST ISSUE)