

LOGGERS WORLD

VOLUME 52 NUMBER 7

To Advertise Call: (800) 462-8283

JULY 2017



Bighorn Logging Corp

BANKS, OREGON

July 4



ESTACADA TIMBER FESTIVAL
ESTACADA, OREGON

July 8



AMBOY TERRITORIAL DAYS LOGGING SHOW
AMBOY, WASHINGTON

LOGGERS WORLD LLC
P. O. BOX 1631
CHEHALIS, WA 98532-8425

LOGGERS WORLD LLC
P. O. BOX 1631
CHEHALIS, WA 98532-8425

PRRST STD
U.S. POSTAGE
PAID
PERMIT NO. 178
SALEM, OR

Finley's Rigging Shack

"Classic"



Originally Printed in
January 1980

THE OUTWARD & UPWARD LOOK:

What a great time of Hope it is! I read the other day that 90% of all the Scientists ever in this world are alive and working today. Of all of the people ever in this world, half of them are here now.

We are at the place in life, with the comforts and the standard of living that our ancestors dreamed about. They dreamed about and thought about all of these conveniences and all this comfort and this security but they never really believed we could attain it --- that is most of them didn't. They would give anything they ever had to have enjoyed some of these things. We shall be soon starting another Decade --- the 1980's. Ten great years to mold and to shape to suit our tastes and our needs. Ten years to plan for, to get ready for and to enjoy. Ten years of achievement. Ten years of dreams that can be realized.

Shall we be happy or unhappy? Well I guess it depends upon us. Upon each one of us. Were the 70's a great time of achievements and accomplished goals for you? Then the 80's will likely be about the same. Was the 70's a ten year span of disappointments and crushing defeats --- more of the same in the future probably. Robert H. Schuller says that when we don't plan to succeed we are planning to fail. I'm planning to succeed in the eighties.

Abraham Lincoln said that most people are about as happy as they intend to be. I intend to be happy and healthy in the eighties.

You have heard the old story about the traveler walking down the road toward a town. He came to an old timer sitting alongside the road and stopped to chat with him. "What are the people in the town ahead like?" he asked the old man. "What were the people in the town you left like?" asked the old man. "Why they were great people!", the travel-

er said, "They were friendly and helpful and generous." "The old man said." "That is exactly like the people in the town ahead, they are friendly and helpful and generous. You will like them and they will like you."

I guess that is a true story, at least mostly true. That story could probably be related to the seventies we are leaving and to the eighties we are entering. Truth will always be truth no matter how we feel about it or accept it. What was true is probably going to be true.

A month or so ago I heard a fantastic speaker of verve and deep beliefs at a Seminar in California. His name was Lloyd Oglive. He talked about the importance of using the rest of 1979 to make plans, set goals and visualize what we wanted to happen in the 1980's. He said that entering this new decade without plans was as bad as building a house without plans. He said that we needed to meet with our families and with our business partners and with our church leaders and set goals and make plans and to picture the things we wanted and wanted to see happen.

I thought this was such good advice that I took it. After all it had cost me \$200.00



FINLEY HAYS

tuition to to to that Seminar and the only way I could get my money back was to take the good advice that I had bought and paid for.

I have made my plans, set my goals and dreamed some of

my dreams. I have created pictures of what I want to happen and I have planned some flexible plans. (Often times plans must be changed, so they should be flexible.)

I have ten years, 120 months to do these things. I have 520 weeks or 3652 days to reach my goals. Knowing what I want and having it down on paper means I've got a good start. So day by day, hour by hour really, I know what needs doing in order to reach those goals.

"Inch by inch, anything is a cinch", Schuller.

"I would think when a man likes to go to bed at night and likes to get up in the morning to face what is before him that day --- I would say man is doing something right." ---Otto Oja.

That is called Positive Expectancy, when you can't wait until it gets to be morning so you can begin another great day --- Wow, another day to be

(Continued on Page 3)
See "Rigging Shack"

IN THIS ISSUE



ON THE FRONT: Bighorn Logging Corp's yarder pulls in a nice turn near Banks, Oregon

See "A Towering Operation" starting on Page 4

2. RIGGING SHACK

"Classic" From January 1980 by Finley Hays

4. A TOWERING OPERATION

BIGHORN LOGGING - BANKS, OREGON by Brandon Hansen

20. BLAST FROM THE PAST

BY QUINN J. MURK FOR LOGGERS WORLD

22. AS WE SEE IT

MAKING BIOMASS VIABLE FOR THE FUTURE

23. SUMMARY JUDGEMENT

26. IRON MART

28. SHOW AND SELL

LOGGERS WORLD

Published by LOGGERS WORLD LLC

Founded in 1964 by Finley Hays

Phone (360) 262-3376



Member and Supporter of the
American Loggers Council Since 1994



PUBLISHERS.....Kevin & Nancy Core
EDITORS EMERITI.....Finley Hays, Mike Crouse
EDITOR/WRITER.....Brandon Hansen
ADVERTISING.....Kevin Core
OFFICE MANAGER.....Nancy Core

POSTMASTER: Send address changes to:

LOGGERS WORLD LLC,
P. O. Box 1631, Chehalis, WA 98532-8425

E-Mail: logworld@aol.com

SUBSCRIPTION RATE (In U.S.A.):
\$25.00 per year; Two years for \$50.00

LOGGERS WORLD LLC cannot and does not assume responsibility for the contents of any advertising in Loggers World. The representations made by advertising is the responsibility of the advertiser and not Loggers World. Loggers World does not knowingly accept advertising that is false or misleading. The limit of Loggers World liability in case of a mistake made in advertising copy by Loggers World will be the charge of the actual space containing the error or less for that particular advertisement.

Rigging Shack

(Continued from Page 2)

used and lived and utilized and shared. We have got 365 of those days to be enjoyed and used in the eighties --- isn't that something?

Richard DeMoss says he believes in this country and he believes in an Outward and Upward outlook. I too believe in this country and in our work and in our industry and in the fact that together we

can solve any problem we bump up against. I believe also in an Upward look, in positive expectancy, in a Positive Mental Attitude, in a 'Can Do' manner and in the greatness of the people of this country and this industry.

I believe it is time to count the good things. To look back at all the victories. To remember the glorious moments. To live again those special times when things were at their best, if only for a minute or

two. To enjoy the joy of laboring and loving and living.

Remember the Victories! Too often we remember the defeats and that gets us to believe we are going to be defeated again. Remember the victories and from that gain the strength and the belief that we can be victorious again. A man is a goal striving being and that brings victory time after time. Remember the victories and savor them, enjoy them, plant them in the mem-

ory bank. That will give us confidence to believe we can lick the problems, meet the challenges ahead of us.

What great times are ahead of us! Great I say, even Tremendous.

Charlie 'Tremendous' Jones says that we must be learning to say Something Positive to every one we meet. We must be learning to see

(Continued on Page 17)
See "Rigging Shack"

AMERICAN LEGACY FIREARMS PRESENTS
THE AMERICAN LOGGER RIFLE

Only 50 numbered guns will be made!

THE LOGGING INDUSTRY WOULD COME TO A HALT IF THERE WEREN'T ANY BRAVE SOULS TO GO OUT IN THE WOODS. THE LOGGING INDUSTRY HAS BEEN AROUND FOR HUNDREDS OF YEARS AND HAS BEEN A TRADE TAUGHT TO MANY GENERATIONS. THIS DEDICATION DESERVES RECOGNITION WHICH IS WHY WE ARE PROUD TO INTRODUCE THE AMERICAN LOGGER RIFLE. THE ENGRAVINGS CAPTURE THE HISTORY OF THE AMERICAN LOGGER AND TELL THE TALE OF HOW FAR WE HAVE COME. CALL TODAY AND FIND OUT HOW YOU CAN GET YOURS!

Place order via phone
and receive FREE shipping!

1-877-887-4867

AMERICAN LEGACY FIREARMS, INC.
CONTINUE YOUR LEGACY...

1001 Smithfield Dr. Ste 201
Fort Collins, CO 80524

www.AmericanLegacyFirearms.com

Mon-Fri 7am-7pm
Sat 8am-4pm MST

HENRY
Made in America, Or Not Made At All

ON THE LANDING

The Thunderbird tower rises over the Bighorn Logging landing in Northwestern Oregon. Bighorn Logging produced over 72 million board feet in 2016.



A TOWERING OPERATION

Bighorn Logging keeps up the production with great employees and a versatile company

Story by Brandon Hansen
Photos by Kevin Core

For Loggers World

It's perhaps fitting that the word "big" is in the name of Harve Dethlefs' company name. Bighorn Logging - based in Banks - is an operation with four yarder sides and three to four ground sides run by roughly 80 employees in the busy Northwestern section of Oregon.

It began, however, as just Harve and a few other cutters in 1980.

"We've grown substantially," the 79-year-old Harve said in an interview with Loggers World.

While he came from a logging family that saw his dad and uncle work in the industry, Dethlefs actually went a different direction. For 20 years he served as a warehouse manager for Oregon electronics company, Tektronix Inc.

But then he "retired" which

consisted of him beginning a cutting company with a business partner.

"We ran a crew of two to three guys, but the demand kept coming so in little over a year we went from a few guys to over 41 cutters scattered from Salem to north of the Columbia River," Harve said.

When his partner wanted to step back from such a big company, they split up the company and around that time Harve was able to get a high-lead thinning job near Vernonia, Oregon for Longview Fiber.

So Dethlefs got a small logging crew that ran an old 599 American and they began thinning for eight months in 70, 80 and 90-year old stands. They would continue to do this and pick up jobs with RSG Forest Products while continuing to grow.

(Continued on Page 7)
See "Bighorn"

**ON THE LANDING**

Bighorn's John Deere 3754D with a Waratah HTH625C head works with a big log out on the landing. The machine was operated by Jim Whitney.



Authorized Dealer

Sales, Parts & Service
Your #1 Established Forestry Equipment Dealer

Cascade Trader has a Complete Line of new Doosan Log Loaders, Excavators & Wheel Loaders for your Logging & Construction Needs!



Ask About Our Special Financing: Up to 60 Months
All offers subject to credit approval



THUNDERBIRD Yarder TTY-70, Track Mt, Excellent\$550,000



Doosan DX300LL-5 Log Loader, NEW IN STOCK



2011 KW 370 Service Truck, low miles\$79,500



Doosan DL420-5 Wheel Loader, NEW IN STOCK

LOG LOADERS

CAT 235C Log Loader, Pierce Boom	\$17,500
CAT 320DFM Log Loader, 2012, low hours	\$185,000
CAT 325LL recent rebuilt engine	\$37,500
CAT 330 Log Loader	\$30,000
CAT EL300B Log Loader.....	\$29,500
DOOSAN DX225LL Log Loader, very good.....	\$169,500
DOOSAN DX300LL Log Loader, 2012, low hrs	\$185,000
DOOSAN DX300LL-3, Forestry Cab, 6000 hrs	\$210,000
DOOSAN S300L Log Loader, recent repairs.....	\$97,500
HITACHI Z350F Log Loader, fresh undercarriage ..	\$135,000
HYUNDAI 3220 Log Loader, 7500 hours.....	\$169,500
HYUNDAI 3220 Log Loader, low hours, clean	\$239,500
JOHNDEERE 200LC Log Loader, Forestry Cab.....	\$59,500
JOHN DEERE 2154LL, 2011, 9000 hours.....	\$139,500
JOHN DEERE 2454LL, 2015, low hours.....	\$219,500
JOHN DEERE 2554LL, 15,000 hrs, excel cond	\$125,000
JOHN DEERE 2954LL, 2014, low hours.....	\$210,000
KOBELCO SK210LC Log Loader	\$64,500
KOBELCO SK290LL, Forestry Cab, recent work	\$65,000
KOBELCO 295LL (2009) Log Loader	\$165,000
KOBELCO SK350 Log Loader, '07, Forestry Cab.....	\$99,500
THUNDERBIRD 1238 Log Loader.....	\$39,500
TIGERCAT LS855C Leveling Shovel, Grapple.....POR	

FELLER BUNCHERS, PROCESSORS

CAT 330BLL Log Loader/KETO 800	\$39,500
DOOSAN DX300LL w/low hrs/KETO 870B.....	\$210,000
DOOSAN DX300LL/Logmax 7000, 2000 hours.....	\$369,000
DOOSAN DX300LL/Waratah HTH623C.....	\$249,500
HAHN Harvester, HTL300, 3-axle SP.....	\$19,500
HITACHI EX200LC/DenisDT3000 Stroker.....	\$32,500
JD 2054/Waratah 622B, 15,000 hours	\$109,000
JD 2954LL/Waratah HTH623C, 7,200 hours.....	\$265,000
KETO 525TS Harvesting Head, complete.....	\$12,500
KOMATSU PC200LC-7/Waratah HTH622B	\$75,000
KOMATSU PC220LC/Pierce 3348 Stroker.....	\$119,500
KOMATSU XT445-2, Quadco, 1,300 hrs	\$390,000
LINKBELT LX290LL/Waratah HTH623C	\$185,000
LINKBELT 330LX '07 /Waratah HTH 624C	\$115,000
MADILL 2800 / DENHARCO DM3500 Stroker.....	\$45,000
PRENTICE 620FB / Waratah HTH-230, Clean!.....	\$49,500
TIGERCAT LS855C Leveling Shovel/FL85.....POR	
TIGERCAT L870 FB, 5702 Disc Saw.....	\$99,500
TIGERCAT LX830C FB, 5702 Disc Saw.....	\$147,500
TIGERCAT LX830C, 2014,5702-360degree tilt.....	\$325,000
TIGERCAT LX870C FB, 5702 Disc Saw.....	\$165,000
TIMBCO T-445, Bar Saw, straight.....	\$49,500
TIMBERJACK 2618, Disc Saw, excellent.....	\$55,000
VALMET 921 Harvester, 965 Head.....	\$57,500
WARATAH HTH-623C, NEW Inventory	POR

TOWERS & YARDERS

CHRISTY Yarder, Truck mount	\$49,500
KOBELCO SK300LL "Yoder".....	\$129,500
LANTEC SY255 Swing/Grapple Yarder.....	\$109,500

MADILL 071, 4-Guys, 8V71, w/Rigging	\$107,500
MADILL 071, 4-Guys, 8V71T, fresh paint, nice.....	\$110,000
MADILL 171, Cat Power, Eaton Brakes	\$375,000
PSY-200, Self-Propelled, nice yarder	\$199,500
SKAGIT BU-80C,T-90 Trailer Mount	\$32,500
SKAGIT BU-84 Slackline, T-100HD, Trailer Mt	\$149,500
SKAGIT BU-94 Slackline, T100HD, Self Propelled	POR
SKAGIT 739 Slackline T100HD, Trailer MT.....	\$149,500
SKAGIT GT3 Swing Yarder, Track Mount	\$79,500
THUNDERBIRD 6140 Swing Yarder, nice.....POR	
THUNDERBIRD TTY-70 Track mt., Excellent.....	\$550,000
WASHINGTON 78-40 Swing Yarder	\$42,500
WASHINGTON 137W Slackline, Trailer Mt., nice! ..	\$189,500

**EXCAVATORS/DOZERS/GRADERS
WHEEL LOADERS/SKIDDERS**

CASE CX160B, Pin Grabber, Thumb, Buckets	\$59,500
CAT D6C, Angle Blade,winch,arch.....	\$27,500
CAT D8K, Ripper, U-Blade, recent repairs	\$42,500
CAT 14E Grader	\$14,500
CAT 312 Excavator w/TowTem Grapple.....	\$65,000
CAT 518 Cable Skidder, good runner	\$17,500
CAT 518 w/Swing Grapple	\$27,500
CAT EL240B Excavator	\$19,500
CAT 525B, Swing Grapple, nice machine.....	\$85,000
CAT 950 Wheel Loader.....	\$17,500
CAT 950G Wheel Loader, Rollout Bucket	\$59,500
DOOSAN DX225LC-3 Excavator, 4,500 hours.....	\$107,500
DOOSAN DL300, Q/C, Tink Rollout, Low Hours	\$99,500
FIAT-ALLIS 8, Winch/Arch, recent work	\$19,500
GARRETT 25 Skidder, Cummins.....	\$12,500
JOHN DEERE 160D Excavator, Bkt, Thumb.....	\$84,500
JOHN DEERE 200D Excavator	\$45,000
JOHN DEERE 748H, Swing Grapple, 2010	POR
KOBELCO SK150 "Blade Runner", reduced	\$65,000
KOEHRING BANTAM 366 Excav., Bucket/Thumb.....	\$17,500
KOMATSU PC220LC-7, Bucket/Thumb.....	\$55,000
KOMATSU WA380-1 w/Log Forks or GP Bucket.....	POR
KOMATSU WA470-6 Wheel Loader, 2011, Scales.....	POR
LINKBELT 3900Q Excavator, Bucket/Thumb.....	\$27,500
MADILL RB500 (180 size) Excavator, guards	\$45,000
MOUNTAIN Logger ML150 Skidder, new tires	\$18,500
WAGNER L90 Log Stacker	\$29,500

CARRIAGES & MISC

ACME "PEE-WEE" Slackpulling Carriage	\$22,500
BOWMAN MARK V SKYCAR, 2006	\$44,500
CTR 314-SCD Pull Thru Delimber	\$18,500
EAGLE Mark IV Slackpuller Carriage	\$29,500
KOMATSU BR380JG Jaw Crusher, Track Mount.....	P.O.R.
MOXY MT31 Articulated Dump Truck, low hours	\$92,500
OLATHE 867TG 10' Tub Grinder, recent work	\$49,500
WAGNER L480 Log Stacker, price reduced.....	\$29,500
WAGNER L90 Log Stacker.....	\$29,500

TRUCKS

Freightliner 1994 Serco 160 Self Loader.....	\$29,500
Mack Dump 1995, 400HP, Drop Axle.....	\$24,500



DOOSAN Log Loaders LOTS OF INVENTORY!



Doosan DX225LL-5 "Road Builder"P.O.R.



WASHINGTON 137W Slackline Yarder, excellent!.....\$169,500



DOOSAN DX85R Excavator New Inventory



KW T800 Log Trucks, '04 - 07 \$62,500 - \$67,500



DX300LC-5 Excavator NEW INVENTORY

KETO • WARATAH • SOUTHSTAR • EAGLE CARRIAGE

Rich Lennox (360) 508-0192	Mike Duch (360) 880-6955	John Griffin (425) 210-9702
John Welch (360) 520-2082	Jim Wark (360) 623-5219	Tony Foglio (360) 520-7084
Shannon Pesicka (360) 507-0542	Cooper Brunoff (360) 880-7534	

Bill Pantier • Doosan Parts: (360) 508-6294 Cell
Traci Brunoff • Sales Coordinator: (360) 880-7531

www.cascadetrader.net



(360) 748-1182

fax (360) 748-1198 •
Located at Exit 79 off I-5
1380 NW State Ave., Chehalis, WA 98532

REPORTING IN FROM...

BIGHORN LOGGING

Bighorn Logging has gone from just a few employees to an **8-side, 80-person** operation in Northwestern Oregon under the leadership of **Harve Dethlefs** since 1980. The company has two towers and two swing yarders, between three to four ground sides, eight trucks and a road-building side. Some employees have been with the company for 20-30 years. **Vice President Mark Standley Jr.** oversees the day-to-day operations while **Timber Manager Mike Luttrell** works on log marketing and running the road-building side.



Simington Sqaure-Chisel Saw Chain Grinder

Get top performance from your pro chain saw by sharpening its square-ground-chisel saw chain with a Simington grinder.

The Simington #S451-C features:

- Die-cast aluminum body
- Flex-mounted work light
- Diamond-tipped dressers
- Grind-angle adjusters
- Reversible fan-cooled motor
- Carbide-tipped tooth locators
- Tripod work stand included



\$999.

MADSEN'S
SHOP & SUPPLY INC.
Centralia, Washington

☎ 360-736-1336
Information Calls
☎ 800-822-2808
Direct Order Line
www.madsens1.com

BANKS, OREGON

Banks, Oregon is located in Washington County and has a population of just under 2,000 people. The town was incorporated in 1921 and has seen rapid growth in the past fifteen years. It serves as the southern anchor for the Banks-Vernonia State Trail which is popular for bikers, hikers and horse riders.



Need Financing? We Can Help!

We Finance Loaders, Trucks,
Skidders, Trailers, etc.

- Working capital available
- Start-up program for under 2 years available
- 1st payment only
- 3,4,5 year financing
- 150K application only
- Finance any equipment or attachment...no age requirement
- Personal one on one financing process
- 27 years' experience in the financing Industry

Isn't it time you made an investment in your machinery?

Call Doug Powell Today!

888-223-2600 • dee@fullcircellc.us

After hours cell: 509-393-5111

11 Spokane Street - Suite 306, Wenatchee, WA 98801 • www.fullcircellc.us



CC HEAVY EQUIPMENT



2015 John Deere 2154 Log Loader, Approx 5,500 Hrs., U/C 70%+, 52" Jewell Grapples, Very Clean Machine, Still Has Plastic Covering On Seat, Excellent Maintenance, Ready To Load Logs.....\$172,000



2012 Kobelco 260-8 Log Loader, 9,400 Hrs., Pierce Boom and Grapple, Recent U/C.....\$125,000



1993 Thunderbird 840 Yoder, L10 Cummins, New Rotek, Very Good U/C, Lines, Christy Carriage, Pull Master 2 Speed Drums, Radios\$110,000
ACME 10 Also Available



2014 Caterpillar 320 Log Loader, 5,000 Hrs., Jewell HD 55" Grapple & Attachable Rake Legs, Excellent Service & Maintenance, Very Nice Machine.....\$179,000



2015 Hitachi 370 Log Loader, Pierce 60" Grapple, 4,000 Hrs., Tier III Engine, Rear Entry Cab, Nice Machine!.....\$350,000



1998 KW T800 Transfer Truck, With Hydraulic Transfer Trailer, 34,000 Miles, 3406E Motor, 3/16 T1 Steel Beds, 222" Wheel Base, 3 Identical Trucks Available, Exc. Maintenance, Mileage Varies Up To 430,000, Trucks Have 2 Speed Eaton Rear Ends, DT402 With Heavy Housings, One Owner.....\$109,000



2004 Kobelco SK290 LC Processor Machine, With 2004 Waratah HTH 624 Processing Head, 16,000 Hrs., New Hydraulic Pump 1,000 Hrs. Ago, New Swing Motor, Good Running Machine, Good 330 Size U/C, Has Heel Rack For Easier Loading.....\$95,000



2015 Komatsu 240B Log Loader, 1,500 Hrs., Equipped With Pierce Grapple, Excellent Machine, Like New, NEW PRICE!\$285,000



2014 International 7500 Service Truck, Crew Cab, 350 HP, 13 SP, Locker, 6,000 lb. Crane, Compressor, Welder, Low Miles.....\$125,000



1992 Timbco 435 Combo Machine, Comes With LogMax 7000XT Processing Head, Timbco Bar Saw Bunching Head and Grapple, 9,400 Hrs., This Machine Can Do It All!.....\$75,000



2013 CAT 325 DFM, 3200 Hrs., 330 Road Builder U/C, 2 Buckets, Thumb, Great Machine.....\$269,000



1995 Thunderbird TY 40 Yarder, 7,498 Hrs., Comes With Lines and Rigging, Rebuilt Shafts and Bearings, Excellent Maintenance, Great Rubber\$130,000

TAJFUN WE SELL TAJFUN (TYPHOON) FIREWOOD PROCESSORS

2013 Tigercat LX830C Feller Buncher, 5500 Hrs., 28" Quadco 360 degree Intermittent Saw, Runs Great\$315,000



1992 Trail King Hydraulic Detach Lowboy Trailer, 70 Ton, 8'6" Wide Plus Outriggers, 26' Well, Flat Deck, CA Legal, 14-2 Spacing From Trailer to Booster for Full Weight Capacity in AZ and NM, 86' Overall, 60' Trailer\$115,000



1997 CAT 527, Re-start on the hour meter as CAT Dealer did a complete Rebuild of this machine. Engine, Trans, Finals, Pivots, Hardbar, U/C (Tri-Tracks).....\$239,000



1997 Thunderbird 1238L Log Loader, 9,989 Hrs., 88,000 lbs., Good U/C With 2 Bar Grousers, Rotex Has Some Wear, Center Hydraulic, Swivel Recently Rebuilt, Clean Machine, Good Value.....\$48,000



2007 Komatsu 270LL-7 Processor With 2008 Waratah 622B, 12,000 Hrs., "Timber Rite" Computer, Loading Hook For Trailer Removal, Nice Tight Machine, NEW PRICE!\$145,000



1985 Skagit BU84 Slackline Yarder, T100 HD Trailer, 4 Jack, Lines, Tags, NEW PRICE!\$89,000



1987 Kenworth W900, Olympic Self Loader, Cummins 444, 13 SP, Eaton 2 SP, 10 Ton Olympic Loader, Excellent Maintenance.....\$35,000



1978 Komatsu D53A-16 Dozer, With Tilt Blade and Brush Rake, Double Position Arch and Winch, Grouser Bar Extensions Added, 3,256 Hrs., Good Running Machine.....\$18,000



CCHEAVYEQUIPMENT.COM

Dallas/Salem Rickreall, OR

Carl Cornthwaite • 503-507-7230 • carl@ccheavyequipment.com
Lincoln Cornthwaite • 971-901-1333 • lincoln@ccheavyequipment.com



Harve picked up jobs with Weyerhaeuser in Washington, Stimson Lumber and International Paper. By 1991, his company had grown to four sides and 50 employees.

"Early on we established a good reputation of being a fair logger and the demand was here," Harve said. "We also had the right people on board."

Having the right employees is a common theme of Dethlefs who understands his operation depends on the boots on the ground and how good they are.

"We now have a handful of employees that have been with us for 20-30 years," he added.

Today, Bighorn Logging has four yarder sides: a TY-90 Thunderbird, a TTY-6170 Thunderbird, a 6255 Thunderbird swing yarder and a 6250 Thunderbird swing yarder. While Thunderbirds aren't manufactured anymore, Dethlefs swears by them as good machines and the variety of sizes he has

(Continued on Page 9)
See "Bighorn"

PACIFIC FIBRE PRODUCTS
WANTED
Alder, Maple, Douglas Fir, Cedar
Hemlock, Cottonwood
PULP LOGS
Land & Timber or Timber Only
Paul Hadaller • 360-431-9661
Rob Vance • 360-355-2817
P.O. Box 278, 20 Fibre Way, Longview, WA.
Office: 360-577-7112
WE ARE NOW PURCHASING LOGS IN MOLALLA, OREGON!

Oliver-Hammer Clothes Shop

Clothing the Working Man for 96 Years

Wesco Caulk Boots, Redwing, Carolina, Carhartt, North Star
Gloves, Hickory Shirts,
Logger "Riggin" Jeans and a
Whole Lot More

(360) 855-0395
821 Metcalf,
Sedro Woolley, WA 98284



MARK STANDLEY JR.

Bighorn Logging's Mark Standley Jr. is the vice president of the company and wears many hats trying to keep operations running smoothly.



THE DRONE PROJECT

Mark Standley Sr. is working on this drone that they hope will be able to use for set up - stringing haywire, flying the blocks for starting a job. Mark says he is very close to getting this project "off the ground" and working in the field.

WRECKING LOGGING EQUIPMENT

EXCAVATORS • CRAWLER TRACTORS • ROCK TRUCKS • LOADERS • GRADERS



2004 Deere 2554



2012 Deere 2454D



2006 Deere 844J



2005 Cat 525B



2005 Komatsu PC220LC7



2001 Cat 325BLL



2001 Madill 2200B



2003 Link-Belt 210LX



2007 Hitachi ZX350LC3



2010 Komatsu WA500-6

FRALEY TRACTOR, Inc. WRECKING DIV.

(509) 884-7117 • FAX (509) 884-3959 • fti2@nwi.net • 1850 GRANT RD., E. WENATCHEE, WA 98802

<p>CAT EXCAVATORS 314C; 315BL; 320LL; 320BL; 320C; 322CL; 320DL; 325L; 330BL; 345BL; 345CL; 350L</p> <p>CAT TRUCKS D25D; D250E; D300E; D400D</p> <p>CAT SKIDDERS D5H; D4H; 525; 527; 525C</p> <p>CAT SCRAPERS 615,621E</p> <p>CASE 821; 9030B; 9040B; 9050; 9050B; 9060B</p> <p>GROVE RT745</p>	<p>LINK-BELT 210LX; 240LX; 290LX; 4300 CII-Q; 5800 CII-Q; 6000Q</p> <p>KOBELCO ED150; SK290LC6; SK200LC IV; SK400LC IV; SK330</p> <p>JOHN DEERE 120C; 160DLC; 200DLC; 230LC; 2554; 310SE; 330CLC; 350DLC; 450DLC; 550H; 544J; 544G; 600CLC; 624G; 644H; 644G; 648GII; 710D; 750B-C; 744H; 753GL; 772BH; 844J; 850J; 992D-ELC</p>	<p>SAMSUNG SE 350LC2</p> <p>TIMBCO T425B-C-D; T445B-C-D; T445EXL; 475D; 475EXL</p> <p>TIMBERKING TK722; TK1162</p> <p>KOMATSU PC120-6; PC130-6; PC138US-2; PC220LC7; PC160LC-7; PC200LC-6; PC220-6E; PC228USLC-3; D155AX5; D355A; WA 200-1; WA180-1; WA400-1; WA320-1; WA180-3; WA250-3; WA500-1-3-6</p>	<p>TIMBERJACK 608; 628; 1210B; 2628; 1270B</p> <p>HITACHI ZX27U; ZX120; EX150; EX160; ZX200LL; EX200-5; EX60; EX200LC3; EX220-3; ZX330 ZX350LC; EX330LC5; EX400LC3; ZX450LC; EX550LC5; EX700; EX750-5</p> <p>VALMET EX10; 500T; 860; 892</p> <p>VOLVO A25C 6x6 Rock Truck; L330C; L120E; L180C; L220E</p>
---	---	--	---

WE BUY HEAVY EQUIPMENT FOR PARTS AND RESALE...CALL US!

Visit us on the web at: www.fraleytractorinc.com



(Continued from Page 7)

allows him to tackle many different types of jobs.

The company uses Boman motorized carriages, and the swing yarders use Acme carriages.

With a company this big, Harve has two day-to-day operation managers who do an excellent job. Vice President Mark Standley Jr. has many years working on the rigging and handles logging operations while

Timber Manager Mike Luttrell works on log marketing, secures private jobs and runs a road building side for the company.

"I spend a lot of time in the office and we all three meet at the beginning of the day to discuss what we're going to do and we go our different ways," Dethlefs said.

Last year Bighorn Logging had their best year ever hauling in 72 million board feet while this year they're on pace for somewhere in the 60-million board foot range.

Mark Standley Jr. is a fifth-generation logger and began at a young age in the timber industry working for his Uncle Scott and Aunt Darla. He began chasing and working rigging right out of high school and worked up to hook tender in cable logging. He then became the hook tender at Bighorn Logging and continued to work his way up the company.

Mark feels that the success of the company really needs to be credited with Harve.

"I feel like that's the No. 1 reason, he's not afraid and we're

not afraid to tell someone they did a good job," Standley Jr. said. "He really values his employees and tries to retain them."

Harve also offers competitive wages and a good benefits package for employees. Standley said it's important in an age to retain experience when finding new workers is becoming harder with a younger generation that doesn't want to go out in the woods.

(Continued on Page 13)
See "Bighorn"



2015 JD 848L, dual-function boom, grapple, winch, 2 new and 2 good 30.5x32 tires, 265 hp, Tier 4, good clean unit, approx 11' wide, 50,000 lbs, 2,530 hours, just arrived in our yard.....\$242,500



2015 CAT 525D, dual-function boom grapple, winch, cab, air, 30.5 tires, just arrived in yard, 203 hp, approx 10'11" wide, 45,000 lbs, 1,770 hours.....\$190,000



1999 THUNDERBIRD 1236DL, Pierce HSD 3345 upper, good working order, just off job, recent trade, approx. 17,000 hours.....\$47,500



1979 CAT D7G DOZER, Esco grapple, angle dozer, runs & shifts OK.....\$33,500



2013 PROMAC 34 CFH III horizontal brush cutter, 34" wide, pinned for a CAT 315CL and others, very good.....\$24,000



PROLENC SNUBBERS for skidders, in stock.....CALL

MPI EQUIPMENT

INCORPORATED

Call Chuck
530-221-6760

8537 Commercial Way Redding, CA 96002
chuck@mpiequipment.com
www.mpiequipment.com



2005 ZEHR HG4000 GRINDER, early Diamond Z, 2009 CAT C27, Tier II, 1,050 hp, remote, stacking conveyor, 8 NEW tires, good brakes, twin-disc clutch, hamermill approx. 62" x 17".....\$129,500



2002 PRECISION HUSKY 66-23, Husky XL-175 loader, CAT 3412, 700/750 hp, Tier I, joy sticks, twin-disc clutch, feed table w/feed chain, cab, 12 new tires, good brakes, fresh oil, new paint, recent injectors, one owner, was working daily, 11,141 hours.....\$99,500



MORBARK 20 CHIPPER, new CAT C13 with 3,684 hours, 385 hp, Tier III, new tires, good brakes, lights.....\$69,500



2007 BANDIT 3590 CHIPPER, 37" drum, CAT C18@700 hp, feed chains, remote, super singles, consigned, call...\$109,000



WASHINGTON 188 YARDER, Detroit 8V92T power, 4-axle carrier, standing skyline. This is a good, clean unit that was working as of 06/10/16. Consigned, call for location.....\$250,000
EAGLET CARRIAGE w/controls available.....\$18,000



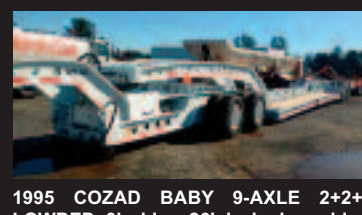
1996 PETERSON 4400B GRINDER, CAT 3412 @ 800 hp, 3 axle w/all new tires, twin disc clutch, dual horizontal rams for feed, heavy rotor, good last clean older unit, approx 87,000 lbs w/o tractor.....\$89,500



2001 VALMET 603S FELLER BUNCHER, Cummins, saw head, AC, chains on 28C tires, runs well.....\$32,500



MIGHTY MITE 4A BAND SAW, Wisconsin gas engine, trailer mounted, all controls, owner estimates it was used 6 times, like new, consigned.....\$21,500



1995 COZAD BABY 9-AXLE 2+2+2 LOWBED, 9' wide x 26' deck, drop sides, power tower in jeep w/20 hp Honda, 4 pin settings. Following items are NEW: all wheel studs, all 11R22.5 tires, all drums, all brakes, all bearings, all slacks, all S-cams, all lights, all wiring, all air lines, all air valves, all apitong deck, all oil caps, all seals, all air bags, all paint + more.....\$135,000



2006 COZAD, 16-wheel, 60-ton, expando w/new Hydra neck in 2010, disc brakes, good 17.5 tires, 22'6" x 8'6" deck, consigned, in our yard.....\$70,000



2013 CAT 930K, QC, bucket, 2,495 hours, prior rental machine, very nice condition, just arrived.....\$120,000



2005 CAT 972G II, Medford log forks, new 26.5R25 tires, command steering, 16,604 hours, tight & dry, very good for age and hours.....\$99,500



1969 CAT 966C, 3rd valve, open ROPS, side-dump bucket, good 23.5x25 tires, runs well for age.....\$16,500

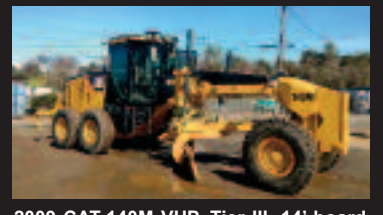
NEW HEEL RACK FOR CAT 330FM OR 568FM, unused, some pins.....\$7,500



2007 JD 672D, 6x6, 14' board, push block, ((6 way front blade avail), rear ripper, NEW 17.5x25 tires, cab, AC, 9,595 hours, former county unit, new paint....\$85,000



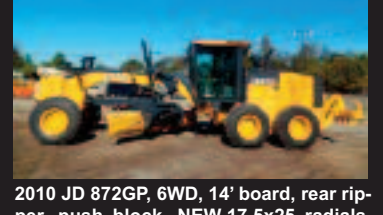
2011 VOLVO G940, 14' board, rear ripper, push block, 14:00 x 25 tires, 11 sp trans, cab, former county unit, good condition, 4,412 hours.....\$79,500



2009 CAT 140M VHP, Tier III, 14' board, rear ripper, push block, 14:00x24 radials, AC, heat, 3,836 hours.....\$140,000



2012 VOLVO G990, Tier III, 265 hp, Volvo 11 speed transmission, 16' board, push block, rear ripper, joy stick controls w/steering wheel, 20.5 radials, super clean, prior demo rental unit, 967 hours, snow wing available.....\$150,000



2010 JD 872GP, 6WD, 14' board, rear ripper, push block, NEW 17.5x25 radials, cab, AC, heat, radio, 8,876 hours, NEW paint, just arrived.....\$135,000



2011 VOLVO EC210CL, hydraulic QC, hyd thumb, AC, low hours for age, 3,378 hours.....\$77,500



WORKING IN THE DEERE

Bighorn Logging's Jim Whitney puts the John Deere 3754D with a Waratah HTH625C through its paces. Bighorn Logging is big into John Deere equipment from Pape Machinery and has several JD loaders, two CAT 568s and the processors have Waratah heads of the 623, 624, and 625 variants along with Southstar heads. They also recently purchased a Doosan excavator from Feenaughty Machinery.

New! EAGLE RAPTOR



**NEW!
ELECTRONIC
CONTROLS!**

We
Also Have
Eaglets,
Super
Eaglets,
Eagle IV,
Eagle V,
Eagle VI
& Claws
Available

EAGLE CARRIAGE & MACHINE

**ECM CONTROL ON
ALL NEW MODELS!**

(541) 963-4646

Fax: (541) 963-3415

After Hours - Sam Baker
(541) 805-9504 cell

62500 Commerce Rd, La Grande, OR 97850
www.eaglecarriage.com

For Qualified Owners We Offer...

The Alternative

To High Worker's Comp Rates!

"In March of '04 I got hit... Hard! I spent weeks in the hospital and had months of Rehab.

*High Cascades Insurance and their **Alternative Plan** were there for me. My disability checks always arrived on time! You can count on High Cascades Insurance!"*

Paul Russell, Russell Resources, Winlock, WA

Call today for more information!

866-514-3356 Toll-Free!

360-274-6991 • 25 A Street SW, Castle Rock, Washington 98611

Wayne Lunday, LUTCF, CLU, ChFC

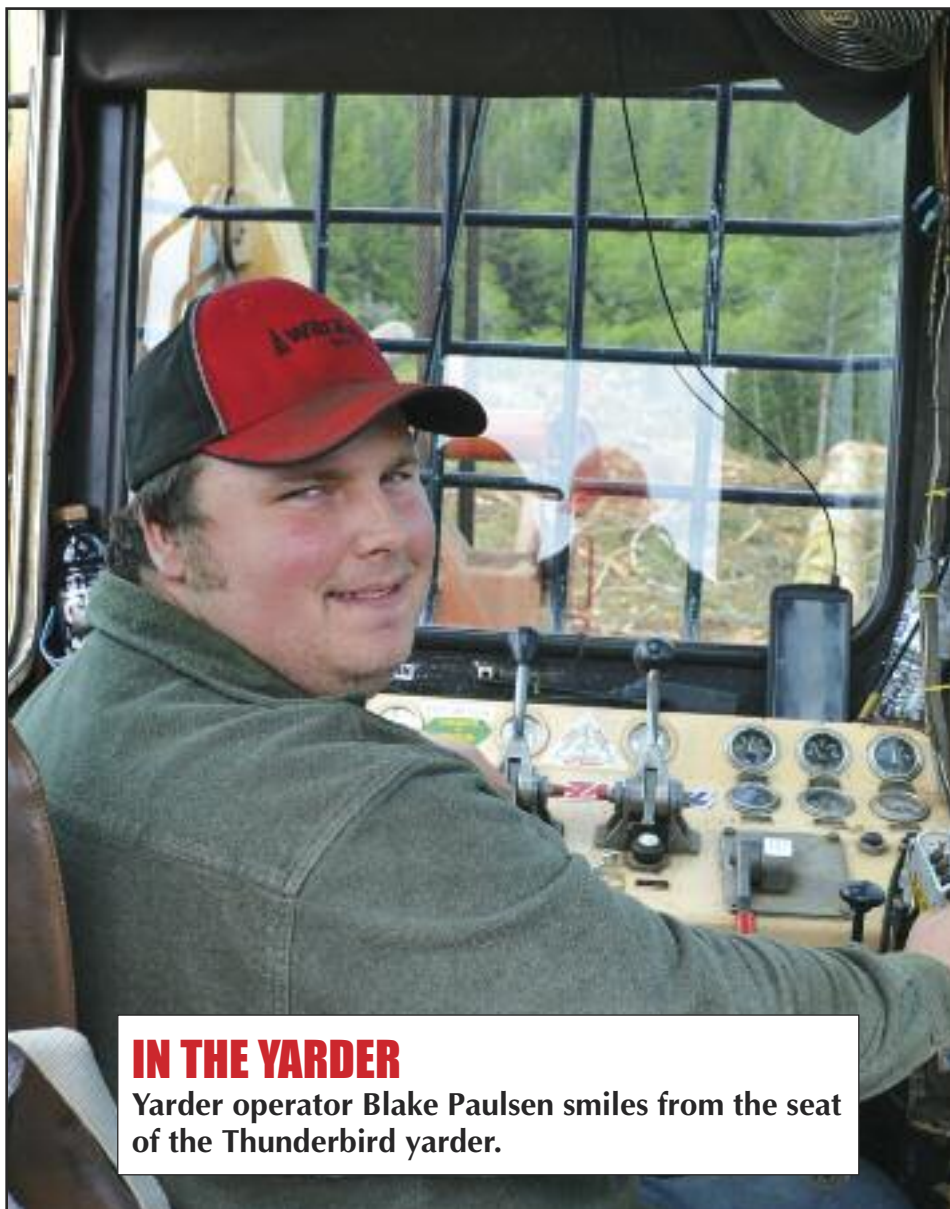
Aaron Lunday

Gail Mowrey, ACSR, CMSR, CRIS

Commercial Insurance Manager

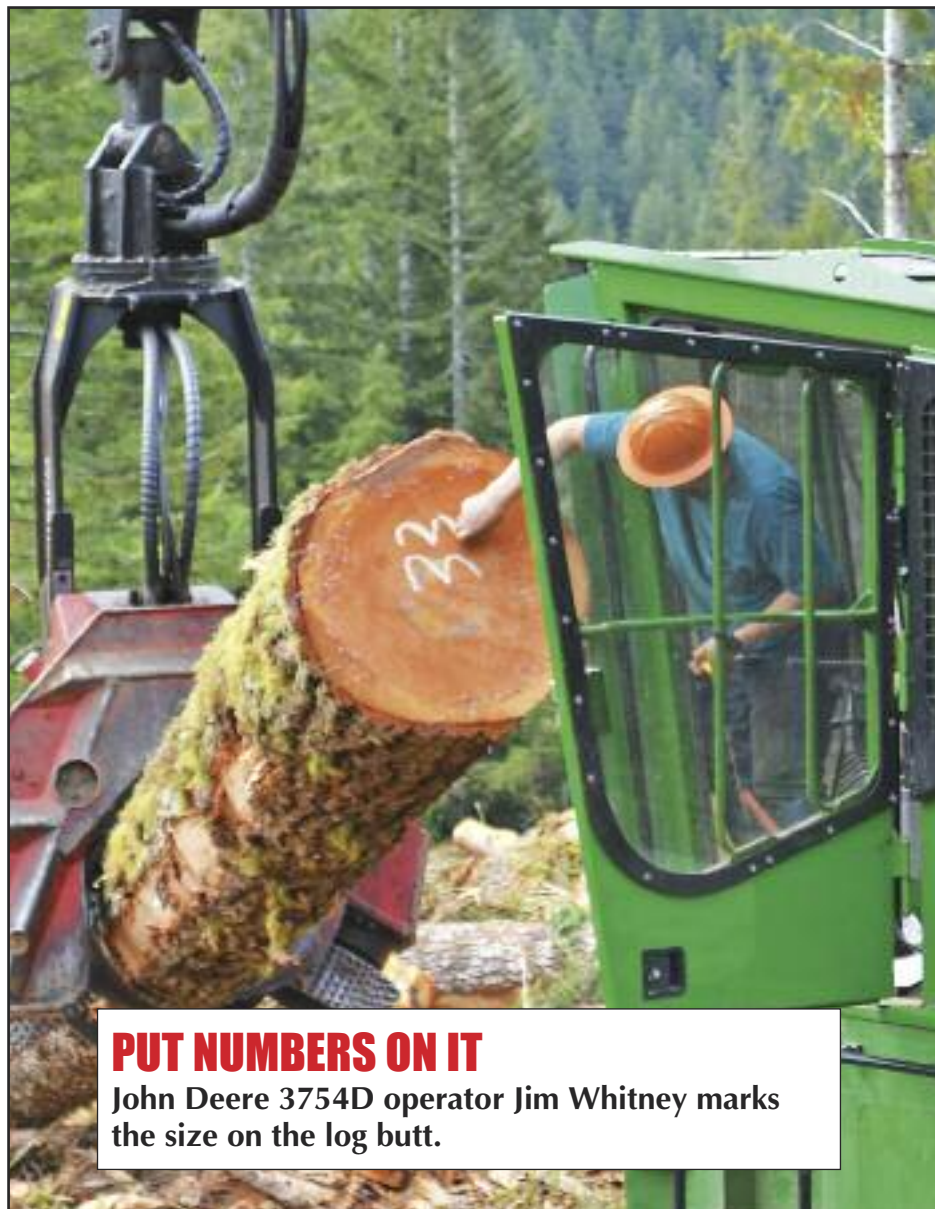


A full-service, True Multiline Agency
Dedicated to the Logging and related Industries
Licensed in WA, OR, CA (OD43750), ID & MT
Commercial Insurance, Personal Insurance, Life, Disability Income,
and Individual and Group Medical Plans



IN THE YARDER

Yarder operator Blake Paulsen smiles from the seat of the Thunderbird yarder.



PUT NUMBERS ON IT

John Deere 3754D operator Jim Whitney marks the size on the log butt.

YOUR FORESTRY EQUIPMENT PARTNER



\$47,400

2002 Cat TK1161
S/N TKD00186
13,431 hrs., Risley 22" falling head, 27.5" track pads, AC Cab, nice machine for a great value!



\$59,500

2005 Cat D5G LGP
S/N RKG01886
6,981 hrs., open cab, 26" single GRS (RBT) track, six way blade, dozer is ready to work!



\$57,500

1999 Cat 330B LL
S/N 6DR03454
27,186 hrs., rotating grapple hydraulics, 48" riser cab, heavy duty side doors, machine works great!



\$122,800

2008 Cat 140M
S/N B9D00224
7,492 hrs., high front headlights, snow wing mounting, tires in good condition, looks and runs great!

For More Information Call:

Gib Gilbert | 253.606.2029 | rgilbert@ncmachinery.com

or

Mike Livers | 425.508.1665 | mlivers@ncmachinery.com

N C MACHINERY



Offer expires July 31, 2017. All equipment subject to price change and/or prior sale. All units FOB current N C Washington branch location. Contact your N C Sales Representative for details.



SUMMER JOB

Chaser Maddy Standley runs in to unhook the chokers. She has good hustle but the pressure is on because in addition to being the only female on the landing, she's the boss' daughter. This was her second day chasing. She leaves for college in the fall where she has a full-ride scholarship to play volleyball.

Wright Enterprises
Professional Suspenders

Faller Suspenders

Which one...do you want?

X-BACK or Y-BACK
BLACK or GREEN
ONLY \$27.42
Imprinted add \$1.25

Plus Shipping & Handling
2 YEAR WARRANTY
Proudly Made in USA

PO Box 65 Onalaska, WA 98570

1-800-922-4002 Fax 985-7061
www.wrightenterprises.com



BRUCE HERB

Bruce Herb leads Bighorn Logging's road building crew and operates whatever needs to be run whenever it needs to be run.

Bighorn

(Continued from Page 9)

"You can't just go down to the equipment dealer for a new employee, it's not like they're a piece of machinery," Standley Jr. said.

This mindset has allowed the more experienced employees of the company to begin to train the younger workers both on the ground and in the machines.

"Our experienced employees

are so valuable, I find myself always asking them for advice on things I haven't encountered before and they have," Standley Jr. said.

And the machine list is an extensive one, about as extensive as you would expect from a company with 7-to-8 sides.

Bighorn Logging is big into John Deere equipment from Pape Machinery and has several JD loaders, two CAT 568s and all the processors have Waratah

heads of the 623, 624 and 625 variants along with SouthStar heads. They also recently purchased a Doosan excavator from Feenaughty Machinery.

They also have five cats with two being used for tail holds, one 527 CAT used as a grapple cat along with a 748 John Deere grapple skidder. They also recently purchase a big John Deere 1050K dozer.

On their ground sides they also have a John Deere skidder,

and three John Deere Feller-bunchers. They have six hand-fallers to handle the steeper ground and do hire three to five contract cutters to keep up with the demand of their jobs.

The bulk of their work ranges from Salem to Tillamook to Astoria and just in general their NW corner of the state. They do a lot of work for Stimson Lumber Co., McFarland Cascade, Columbia Vista, Boise Cascade and a fair amount of private work. When it comes to who they send the wood to, Bighorn sells wood for plywood to Boise Cascade, high end grade wood to Columbia Vista, wood for studs to Stimson and poles to McFarland.

They have eight of their own log trucks but also subcontract another 25 to 30 log trucks. That number can bump up to 40 trucks when work is busier.

For maintenance, they just built a new shop in Vernonia and have two shop trucks to do work out in the field. They contract out the big jobs on engines and transmissions or have the dealers do the work on them.

Bighorn Logging tries to roll their machines over every three to four years so they still have residual market value after 8-10,000 hours of work.

"Downtime in this indus-

(Continued on Page 16)
See "Bighorn"

CALL US FOR ALL YOUR DOOSAN NEEDS

Ask about our
Finance and Lease
Specials!

DOOSAN

Authorized Dealer

- Parts
- Service
- Sales
- Rental
- Lease

Feenaughty
EST. MACHINERY CO. 1901

Serving the Northwest Since 1901

(503) 282-2566

Fax: (503) 282-1755

4800 N.E. Columbia Blvd., Portland, Oregon 97218

feenaughty.com

(541) 636-3660

541-357-4542

9404 Highway 99 N., Eugene, Oregon 97401

ORDER ONLINE



www.HarvesterBars.com

End Greasing Frustration

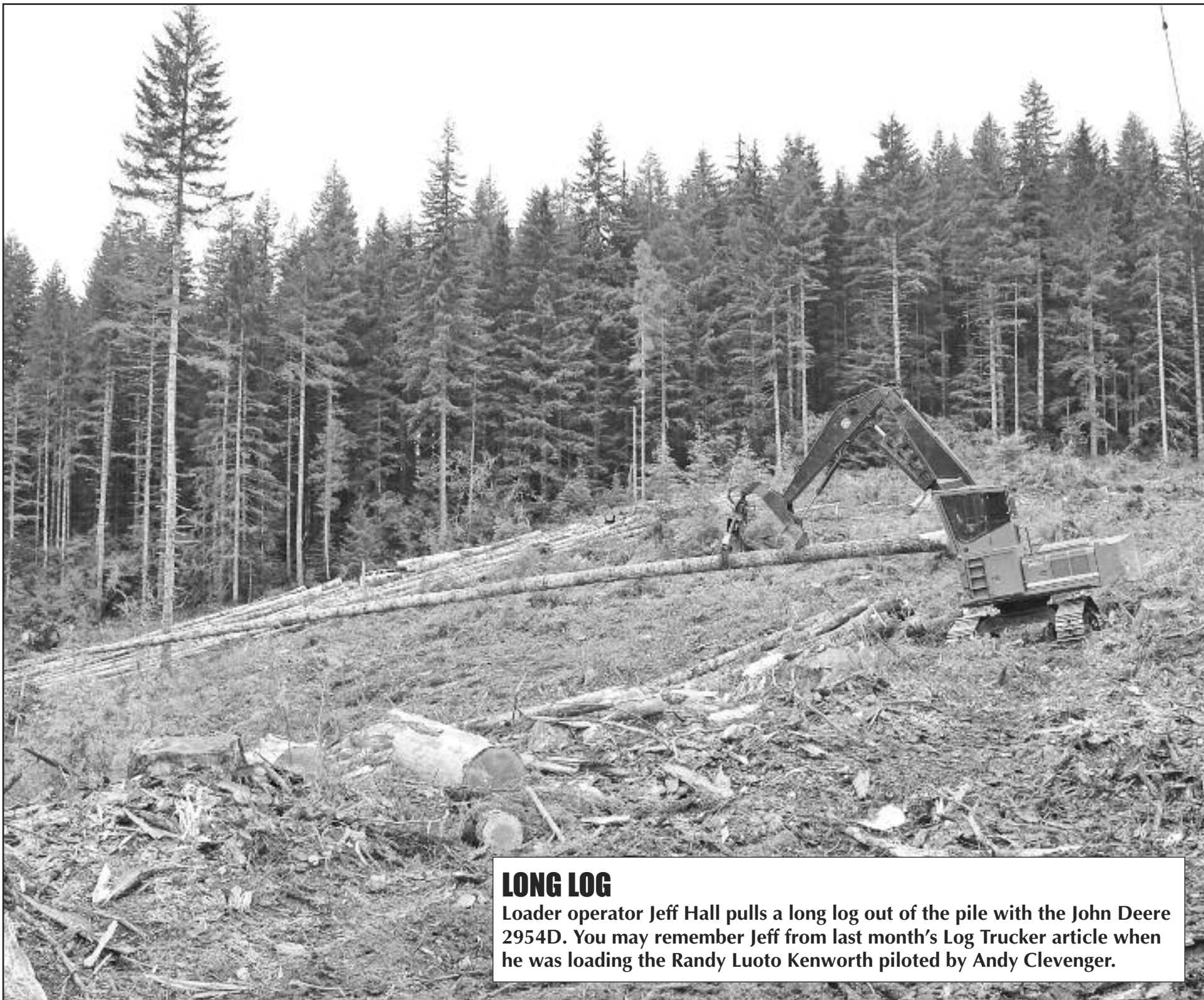
Grease goes in,
not on, the machine!



ORDER ONLINE:

Lock and Lube
343 Dorchester Road
Lyme, NH 03768

LockNLube.com
(603) 795-2298



LONG LOG

Loader operator Jeff Hall pulls a long log out of the pile with the John Deere 2954D. You may remember Jeff from last month's Log Trucker article when he was loading the Randy Luoto Kenworth piloted by Andy Clevenger.



COWLITZ RIVER RIGGING



Ask about our Cab Guards

Full Service Shop

Full Service Rigging, Saw Repair & Work Clothing

www.LoggingSupply.com

Toll Free 1-800-488-3127

Great Buys

2009 Tigercat LX830C Feller Buncher with ST5702 saw, 8,099 hours, Portland # 020724 **Call for Pricing**

2008 Link-Belt 290LXTLFC, forestry cab, GCCV-anti drift, catwalk step, Pierce TC52 grapple, 13,579 hours, Portland # 021080 **Call for Pricing**

2006 Valmet EX10 Harvester with Valmet 370-2 harvesting head, 9,550 hours # 019195....\$145,200

2005 Link-Belt 240LXDHP with Waratah 622 head, 11, 345 hours, # 019405 **Call for Pricing**

2005 Link-Belt 210LX, w/LogMax 7000, 7200 hours, Spokane, WA, #018155.....\$185,000

2004 Tigercat L870, single grousers, ST5702 hot saw, new under carriage in 2012, 17,850 hours, #020000.....\$144,500

2003 Link-Belt 240LXDL with Pierce 3348 delimeter, 17,762 hours, Prineville # 021123.. **Call for Pricing**

Sales ▴ Rentals ▴ Service ▴ Parts

Portland | Eugene | Prineville | Seattle | Spokane

800.221.8512 800.342.6780 888.662.2940 800.622.8876 800.945.9168

Link-Belt
EXCAVATORS • FORESTRY
BULDOZERS • HARVESTERS

Tigercat

Kawasaki

www.triadmachinery.com



TRIAD
MACHINERY
CONSTRUCTION
AND FORESTRY



THE BIG ONE

When it comes to road-building, Bighorn Logging's John Deere 1050K, operated by Steve Sohler, is a real monster.



**ZENDER EQUIPMENT
COMPANY**

Contact: Kevin Zender (360) 319-7973

Rod Hansen (360) 520-6849

Bob Howell (541) 913-9559

Email: kevin@zenderequipment.com

rod@zenderequipment.com • bob@zenderequipment.com

www.zenderequipment.com • Everson, WA

LOG LOADERS

2013 Cat 324DFM, w/Cat grapple, 11,600 hrs, auto greaser, good u/c, xlent cond ..	\$150,000
2012 Cat 568, w/Cat grapple, 11,000 hrs, auto greaser, nice loader	\$250,000
1995 Cat 325, w/Pierce grapple, 23,500 hrs, good u/c, Young front	\$45,000
1998 Cat 330, w/2 Pullmaster HL 25-4	\$140,000
2007 Link-Belt 290, w/Pierce grapple, 17,000 hrs, forestry cab, new pump, good u/c	\$90,000
2013 Link-Belt 290x2, w/Pierce grapple, 6,800 hrs, good u/c, nice loader	\$240,000
2007 Madill 2850C, w/Pierce grapple, new u/c, recent rblt motor pump swing box travel motor pins bushings ..	\$175,000
2004 Hitachi 250LL, w/Jewell grapple, recent motor & rblt pump, u/c 70%	\$85,000
2015 Doosan DX300LL, w/Jewell grapple, 3,500 hrs, like new cond	\$175,000
2005 JD 2054, w/Pierce grapple, tong tosser, major rebuild, motor, pump, u/c, rotex, drives & paint	\$145,000
2014 JD 3754D, w/Jewell grapple, 6,000 hrs, nice loader	\$250,000
2014 JD 2954D, w/Jewell grapple, 5,000 good cond., new rails, nice loader	\$240,000
2006 JD 2454, w/Pierce grapple, 8,000 hrs, forestry cab, new motor, good u/c	\$115,000
1997 T-Bird 1238 LL, w/grapple, good nice old log loader	\$35,000
2004 Link Belt 240 LL, w/Pierce grapple, 20,000 hrs, recent pump	\$50,000
2006 Kobelco SK 330, w/Jewell grapple, 15,000 hrs, new u/c	\$135,000
2008 Kobelco SK 350, w/Jewell grapple, 11,500 hrs	\$100,000

DELIMBERS

2012 Hitachi ZX240, w/2012 Waratah 623C, w/new u/c, rebushed, new knives, 12,800 hrs, xlent cond	\$190,000
2012 Hitachi ZX210F-3, w/2012 Waratah 622B, nice clean processor	\$109,000
2011 Cat 320DFM, w/2011 Waratah 622B, 16,300 hrs, good u/c, rebushed head ..	\$109,000
2006 Cat 320C, w/06 Waratah 622B, 14,000 hrs, road builder front, 80% u/c	\$80,000
2007 Madill 1800LL, w/Waratah 622B, 12,000 hrs, new drive motor and other repairs, log loader front ..	\$160,000
2007 Link-Belt 290 LL, w/2014 Waratah 623C, 7000 hrs on head, good u/c, 18,000 hrs carrier ..	\$180,000
2013 Link-Belt 290X2 LL, w/2013 Waratah 623C, 10,000 hrs, very good cond	\$275,000
2004 Komatsu PC300, w/04 Waratah 624 Super, 19,000hrs, good u/c, 2000 hrs rblt motor, recent pump ..	\$130,000
2016 Doosan 225, w/Pierce GP, low 950 hrs on carrier, like new cond, 3000 hrs on GP head	\$305,000
2008 Doosan 225, w/Waraath HTH 620, recent Axis complete rebuild on head	\$135,000
1998 Timber Jack 1270B, w/TJ 762 head, good rubber, w/track chains and lots of spare parts for head ..	\$55,000
2007 Waratah 622B, w/comp & controls, recent bushings, good cond, drive motors ..	\$45,000
2004 Waratah 624 Super, w/comp & controls, recent drive motor and bushings, good cond	\$45,000
2002 Cat 325C, w/02 Waratah 622	\$40,000
1999 Cat 322B, w/2004 624 Waratah, auto greaser on carrier and head, extended frame	\$145,000
2012 JD 2454, w/Pierce 3348 PMD, 8,000 hrs	\$175,000
2004 JD 2554, w/DM 4400, good running delimber, 18,800 hrs	\$65,000
2005 Madill 1236, w/Pierce 3348 PMB, 15,000 new motor and boom, recent pump, lots of extra parts ..	\$85,000
2001 Cat 320B, w/DT 4400, recent repairs & spare parts, 14,000 hrs	\$70,000
1998 T-Bird 1236, w/DM 3500, good running limber	\$35,000

ROAD BUILDERS

2014 Cat 568, digging & clean out bucket & thumb, pin grabber, 7,500 hrs, very good cond	\$230,000
2010 Hitachi 350, digging bucket & thumb, 12,500 hrs, recent pump, good u/c	\$107,500
2005 JD 330C, w/digging bucket & thumb, 5,300 hrs	\$95,000
2013 Cat 325DFM, w/digging & clean out bucket, 2800 hrs	\$290,000

BUNCHERS

2014 Tigercat LX830C, Tigercat 5702, 350 rotation saw, 5,300 hrs, u/c 80%, xlent cond	\$392,500
2013 Tigercat LX830C, w/Quadco 2900, 360 rotation saw, 29", very nice cond., 5,200 hrs good u/c	\$325,000
2016 Tigercat L870C, Tigercat 5702, 350 rotation saw, 1,800 hrs, like new cond	\$475,000

2007 Tigercat LX870C, 23" Tigercat 5702 saw, new Cummins power, good u/c, 10,100 hrs, xlent cond ..	\$160,000
2007 Tigercat L870C, 23" Tigercat 360 saw, 4000 hrs, rblt motor, tilt pins, rblt pump, hyd cyl & saw, good u/c ..	\$115,000
2011 Tigercat LS855C, w/Satco falling saw, drop nose, Young grapple & heel, grouser extensions, tether hitch ..	\$265,000
2016 Tigercat LS855D, w/5195 felling saw, summit tethering ele. Installed, only 1,500 hrs, like new cond	POR
2011 Valmet 450 FXL, w/Quadco 22" 360 rotation head, good u/c, good pins & bushings	\$235,000
1999 Timbco 445D, w/32" bar saw, runs good, exlent u/c, recent motor & pump	\$65,000
1994 Timbco 425, 38" bar saw, 5000 hrs on rblt motor & 2 season on rails	\$35,000
Cat 2440 Hot Saw, 24" saw, 40 degree tilt, new bearing	\$12,500
2005 Timbco 445EXL, w/Quadco 2900-360 rotation, 11,000 hrs, recent u/c, motor & pump	\$132,500

SKIDDERS & DOZERS & GRADERS

2014 Tigercat 610C, front rubber 70%, new rear rubber, 3,100 hrs, very nice skidder	\$185,000
2006 JD 848GIII, 9000 hrs, new chains, good rubber	\$87,500
2010 JD 748H, bunching grapple, dual frctn boom, rears 90%, front 30%, 1 set chains, 5200 hrs ..	\$125,000
2008 Cat 545B, dual frctn bunching grapple, recent motor & trans, rblt front diff, good chains	\$60,000
2005 Cat 525B, single frctn boom, bunching grapple & winch, 11K hrs, rblt trans, good rubber and chains	\$60,000
2004 Cat 525B, swing boom, bunching grapple	\$80,000
1999 TJ 460, new chains, fixed boom, 40% rubber, good running skidder	\$60,000
1996 JD 648E, w/dual frctn boom, grapple, w/chains, 15,000	\$22,500
1996 JD 648E, w/fixd boom, good rubber, w/chains, 13,000 hrs	\$35,000
1995 Cat D4H TSK, w/fixd boom & winch, rblt motor & new rails sprockets & shoes, recent rolls & idlers	\$80,000
2012 Cat 517, swing boom only, 2,800 hrs, auto lube system, new rails & shoes, like new cond	\$250,000
Dresser TD15, w/grapple, single frctn boom, w/tilt blade, good u/c, nice dozer	\$28,000
Cat D7F, w/winch	\$25,000

YARDERS & SWING YARDERS

Washington 78SL, 3 guyline, rblt Detroit 6V71T power, good u/c, nice cond, run all logging systems ..	\$107,000
1982 Washington 118, Major rebuild last year, new 8V92, air & hyd systems, New wheeler single lever controls ..	\$275,000
1998 Cat 330, w/2 Pullmaster HL 25-4	\$140,000
2003 Diamond T8000, track mount, 8 guylines, Cummins 855, Twin disc 5 speed, under 100,000 lbs total ..	\$640,000
Madill 071, Detroit 8V71T, recent bearings in drum set, 4 guyline, good u/c, 1 1/8" machine	\$105,000
Madill 071, Detroit 8V92T, water on all drums, 4 guyline, good lines, nice yarder	\$110,000
Madill 071, Detroit 8V71, 3 guyline, exlent u/c, good lines	\$85,000
T-Bird TY90, T100 self propelled, 8 guylines, Cummins KTA power	\$410,000
T-Bird TTY 70, good u/c, Cat power	\$520,000
T-Bird TMY 70, rblt Cummins power and other recent repairs, excellent cond	\$450,000
T-Bird TSY 6140, very good swing yarder, 8,900 hrs	\$430,000
T-Bird TMY 50, Detroit 8V92T, good lines, nice yarder	\$320,000
Skagit GT 3, avl. 1st of July, call for info	POR
Skagit 739, trl mount, Cummins KTA power, 8 guyline	\$200,000
Skylead SC40, trl mount, Cummins power, water on haulback, c/w rblt Eaglet car & rigging	\$115,000
T-Bird TMY 45, track mount, 2014 Super Eaglet, recent drum bearings, low hrs motor, w/radios, rigging	\$205,000
T-Bird TMY 45, trl mount, rblt Cummins power, c/w Eagle 2 car & rigging, M-123 GI truck avl	\$85,000
T-Bird TMY 45, self prop on rubber, rblt 903 Cummins & torque, good lines, radios, Eagle car avl	\$75,000

TRUCKS & FIRE TRUCKS

GMC, Detroit diesel power, w/500 gallon tank, live reel tools	\$7,000
1991 International 9300, 16' Alum box, steel bottom, rblt Cat 3406B, 18 speed, Dt 402 rears & Hendrickson spring over walking, new clutch, c/w Sturdy Weld 3 axle, 1 lift axle, Alum transfer trl	\$70,000
Sturdy Weld, 3 axle, 1 lift axle, Alum, steel bottom pup trl	\$30,000



IN THE BOARD ROOM

Mark Standley Jr. and road building supervisor Mike Luttell spend time in the their office hammering out some important details.

Bighorn

(Continued from Page 13)

try really hurts so new machines will help keep that down,” Harve said. “You also have to keep up with technology and if you can’t produce then the mills will hire someone else.”

Harve oversees an office staff that includes Maggie Brower, Denise Dethlefs, Kelsee Miller and Sarah Standley. He does admit however, as an adamant outdoorsman he makes every effort he can to get out of the office to see how operations are going.

“I really want to stick around as long as I’m here,” Dethlefs said. “Mark and Mike are good

operational people. Mark has been with me for 14 years and along with my daughter, Denise, who has been here for 23 years, I think they will continue for me.”

Standley’s role with the company is to be all over, as any manager of a logging operation could tell you.

“My day varies depending on if I need to bid jobs, go around to different operations to help make things run smoothly,” Standley Jr. said. “We also have good site bosses that help with that and I definitely spend a lot of time on the phone.

Three generations of Standleys work for Bighorn Logging. Standley’s father, Mark Standley

Sr. works as a safety consultant for the company dealing with safety meetings and fulfilling all requirements.

Standley’s daughter Maddy, who has a full-ride volleyball scholarship is spending the summer as a chaser. While it’s a tall order to be the boss’ daughter on the jobsite, Maddy hustles, has a good attitude and a ready smile.

A younger generation worker is something that Bighorn has to contend with as the current average logger is somewhere in his 50s. With a generation not apt for hard work in the woods, the company continues to do their best handling that transition. Equipment has changed too, with

things becoming more mechanized, more efficient and more powerful.

“It’s really great when you can get a true logger that takes pride in their work, that’s the kind of people we like to hire,” Harve said.

And hiring has been something the company has done in the over three decades of existence. From a few cutters to now up to eight operating sides, Bighorn Logging continues to be a major log producer in Oregon.

“It’s definitely been fun and I’m really grateful that Harve gave me the opportunity for this ride,” Standley Jr. said.



www.acmecarriages.com

FORTRONICSTM LTD
FORESTRY ELECTRONIC CHOKER SYSTEMS

ACME
Manufacturing Inc.

90099 Prairie Road
Eugene, OR 97402

Phone 541-741-2200

After Hours: 541-554-9414



LOGGERS WORLD VIDEO

Use your smartphone to download a QR Code scanning app. Scan this code to watch video of Bighorn Logging in action.



COMING UP

On the Bighorn Logging landing, a Boman carriage brings up another turn for chaser Maddy Standley to handle.



Rigging Shack

(Continued from Page 3)

something positive in everything that happens. We must be learning to See It Big and Keep It Simple (SIB-KIS).

That is from his book "Life is Tremendous" by Charlie Jones. The subtitle is 'Enthusiasm makes the Difference'.

If you need a small book full of good sense that will make the world look brighter and the problems look smaller get 'Life is Tremendous' at the store.

To develop a Positive Mental Attitude you just train your thoughts to keep thinking on how to attain those

things you want to attain. Don't think about those things you are afraid are going to happen. That is all there is to it and it works.

To close this bit of upward looking advice let me close with the "POSSIBILITY THINKER'S CREED" by Robert H. Schuller.

"When faced with a mountain I will not Quit!"

"I will keep on striving until I climb over, find a pass through, tunnel underneath -- or simply stay and turn the mountain into a GOLD MINE with GOD'S HELP!"

Happy 1980!



Appelo Archives Center

Logging Museum, Library and Bookstore



Our best selling book:

"When Logging Was Logging" is available for purchase in store, online, and over the phone!

1056 SR 4 Naselle, WA 98638

360.484.7103

info@appeloarchives.org

www.appeloarchives.org

The Appelo Archives Center specializes in preserving and presenting the history of the Naselle-Grays River Valley area of SW Washington. The Archives offers a museum, local genealogy, library, archival material, and bookstore.

Open Tues.-Fri 10am to 4pm and Sat. 10am-2pm

Photo:

Deep River Logging Co.'s Shay No. 5 at the Deep River log dump, 1912.



**Timbco
Fire Damaged
425D**
feller buncher, like new u/c, squirt boom
Parting Out



Cedar Rapids Rock Crusher,
self contained, rolls, jaw, & screen deck.
\$28,500



CAT D5HTSK
with ESCO swing boom new u/c
Call

CAT D342
High HP. rebuilt
Call



Cat 140G, VHP ripper, Balderson hyd. snow wing \$55,000



Cat 315L & 315CL Parting Out



**Cat 988B
Parting Out**

Skidder Tires
30.5x32 20 ply
26Lx26 18 ply



DUKES
PARTS & EQUIPMENT
509-952-9223

204 Butterfield Rd., Yakima, Wa 98901 Shop: 509-469-9420

Check us out online: www.dukesheavyequipment.com



GENERATIONS

Pictured are (L to R) Harve Dethlefs, Mark Standley Sr., Maddy Standley and Mark Standley Jr. Here are three generations of Maddy Standley's four generations of logging heritage.

RIGHT: Harve Dethlefs and Oregon State University's Brent Klumph having a conference.



NEW MACHINE

Pictured is Bighorn's new Doosan excavator 300LL from Feenaughty Machinery.



USED PARTS FOR

CONSTRUCTION & LOGGING MACHINERY

**Crawlers, Loaders, Trenchers, Excavators,
Backhoes, Skidders, Skid-Steers,
Engines and Transmissions**

"Rely on our Experience - Est. 1967"



1-800-626-6046

**Schaefer
Enterprises**

4535 St. Rt. 3 N. • P. O. Box 136, Wolf Lake, IL
www.sewlparts.com - parts@sewlparts.com

Most Major Credit Cards Accepted

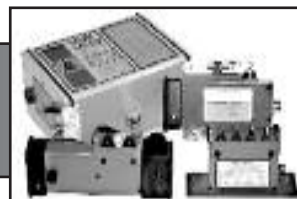


**ROTHENBUHLER
ENGINEERING**

HOME OF THE *Talkie Tooter*

MARK III WHISTLE CONTROL

now in the 72 MHz band, get away from
congested frequencies with a proven design



CARRIAGE CONTROLS

rugged radios that can control most
manufacturer's carriage from the ground or
the yarder

**Rugged, Durable,
Industrial Radio
Equipment since 1946!**

P.O. Box 708, 524 Rhodes Rd
Sedro-Woolley, WA 98284-0708
Telephone 360-856-0836
www.talkietooter.com

BLAST FROM THE PAST

BY QUINN J. MURK FOR LOGGERS WORLD



LUNCH IN THE SNOW

ABOVE: With our pickups and the enclosed cabs of our machines, many of us don't have the luxury of dining in the cold and snow. The entire crew of this Minnesota logging company, the "Red River Lumber Company," has had lunch brought out to them put out by the camp cook. Eating in minus zero weather one had to eat fast before the plate of usually beans was cold or even froze. For the working stiff of that time, this was just normal living.

NATIVE AMERICAN COUPLE

The Native American women of the past were notoriously hard workers. Living in their old ways before white man, it was noted that they did the majority of the manual labor to keep the tribe surviving. After the European influence, this custom held over and many women worked daily alongside their husbands. That is what this couple is doing. I would guess that they are bucking logs off their reservation land allotment. Many successful Indian businessmen got their start logging and selling their own timber. Some of those families are still at it today.

CONTACT QUINN:

VIA EMAIL
ktmurk@centurylink.net

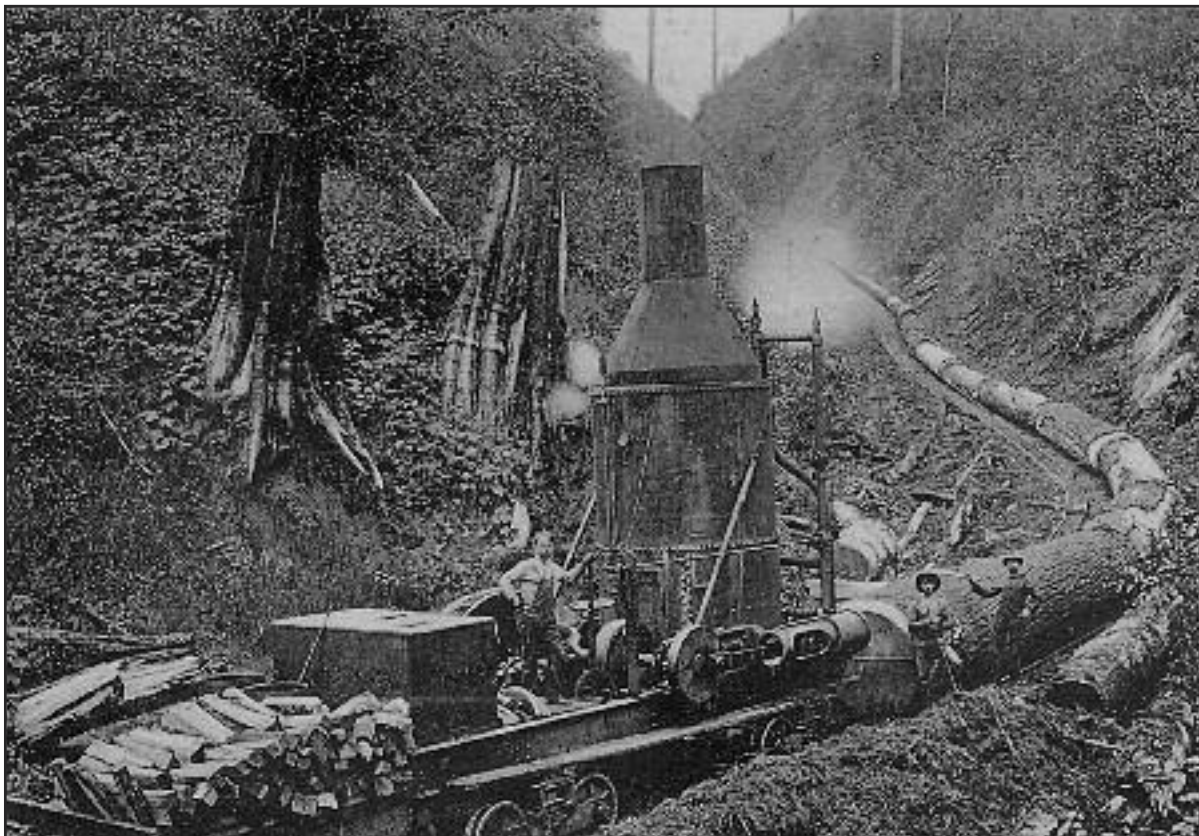
Or by Mail at:
 P.O. Box 319,
 Siletz, OR 97380

BLAST FROM THE PAST

BY QUINN J. MURK FOR LOGGERS WORLD

THE GRIP WHEEL

This early form of industrial locomotion is known as a grip wheel. The grip wheel worked on the principle that the large mechanical wheel gripped a line that lay between the rails or alongside the track. Its range of travel was only back and forth, for the length of the line. Three miles was about the maximum length. The grip wheel was not overly successful. Only one West Coast logger, the "Colvins" of Marshland, Oregon, had any luck with the darn things. These contraptions had no brakes and if the line were to break, it was a free ride. This old photo shows the second of two styles of the machine. One can see the cable laying alongside the track. Very few of these machines were ever built.



CORRECTION:

Thanks to a couple of sharp eyed subscribers who noticed that we had the wrong caption with this picture last month. The caption below is the corrected caption.

MOVING A DONKEY BY TRUCK

This photo shows how sled-mounted yarders were moved in the days of truck logging. The first truck carrying the front end of the yarder has a strip chain to keep the machine on the log bunk. You will note the front end of the sled is barely on the bunk. A Cat is going to help pull it up the hill. The second truck carrying the real load, has to back up during this move. Actually, this was even quite common on the highways. Could you imagine doing this for two or three days on a major donkey and sled-mounted loader move? Things didn't happen too fast, but it still took very skilled truck drivers.



As We See It....

Making Biomass Viable for the Future

By Danny Dructor

As professional timber harvesters we understand the importance of biomass energy to the future of our industry. Not only does it help open and expand markets for our businesses, it helps makes operations and logging jobs more economical.

Yet the future of the biomass industry is uncertain given the current regulatory environment and the fluctuating costs of natural gas and other energies. As companies consider making large investments in new or existing biomass facilities, they need stability and certainty to ensure those investments pencil out.

Earlier this year the U.S. Congress took the first step toward providing that needed stability and certainty. The 2017 Omnibus Appropriations bill included language clarifying federal regulatory policy to reflect the carbon-neutrality of forest-based biomass, a policy that ensures biomass plays a part in government energy

standards.

But that is probably not enough. The Biomass Power Association wants to go further to make this renewable energy more viable, as well as promote and protect the development of facilities throughout the country.

At the ALC Spring Fly-In BPA's Bob Cleaves asked us to support the reintroduction of legislation to extend the Renewable Electricity Production Credit ("PTC") for existing "open loop" biomass facilities for the 10 year period that was originally granted for new facilities. The legislation is expected to be brought forward by U.S. Sen. Bob Menendez of New Jersey with bipartisan co-sponsors.

The PTC works as an income tax credit allowing for the production of electricity from qualified energy resources at qualified facilities, which can be used by the facility or the power purchaser. Those that commenced construction prior to December 31, 2016 were eligible to claim the PTC for 10

years after the qualifying facility is placed in service, but that provision has now expired with no extension.

The PTC also offered different benefits for certain open- and closed loop facilities, which only served to favor some industries over others. A multi-year deal would help correct the tilted policies that have awarded some renewable technologies billions of dollars – helping them become independently successful – and others a small fraction of the PTC.

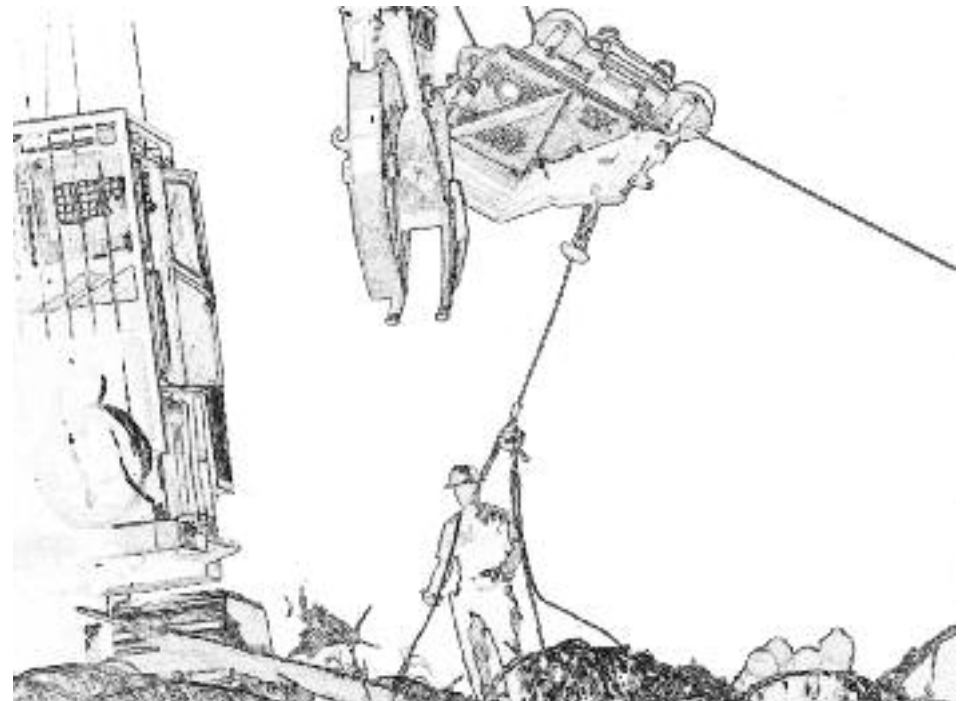
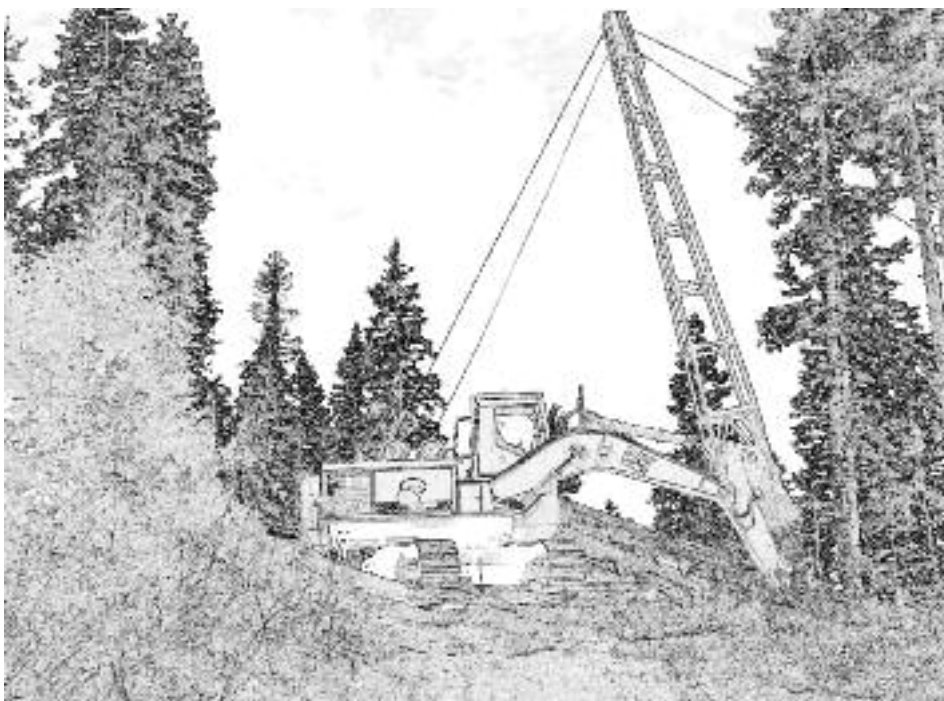
Many biomass facilities began production decades before the PTC began – meaning that they haven't had the opportunity to qualify for the full 10-year credit received by newer technologies. Additionally, low natural gas prices are making it difficult for utilities to sign new contracts with biomass facilities. The extension of the PTC to biomass facilities would help offset the cost of fuel, keeping the supply chain operating. It would also help keep loggers employed by preserving an important revenue stream.

Stay tuned for more updates on this proposed legislation. Here at ALC, we are looking forward to seeing the language of the bill, and we will keep you informed of the bill's status and other opportunities to support the biomass sector.



Danny Dructor is the Executive Vice President for the American Loggers Council with offices near Hemphill, Texas.

The American Loggers Council is a 501 (c)(6) not for profit trade organization representing professional timber harvesters in 32 states across the United States. If you would like to learn more about the ALC, please visit their web site at www.amloggers.com, or contact their office at 409-625-0206.





Summary Judgment....

Obama's EPA Wrecks a Colorado River Then Wrecks Havoc on Landowners

by William Perry Pendley

The photographs shocked the nation. The Animas River had been turned mustard yellow as it meandered through a Colorado national forest into Arizona, New Mexico, Utah, and onto tribal lands. Federal bureaucrats denied responsibility and, when sued, argued they were not liable for their tortious conduct. Then, to cover up for their incompetence, they declared hundreds of thousands of acres of land "toxic" and under federal civil and criminal jurisdiction. In a Washington, D.C. courtroom, the landowners and others are fighting back.

In August of 2015, the Environmental Protection Agency (EPA) was in charge at the abandoned Gold King Mine near Silverton when a three-million gallon flood of dangerous mine waste, including 880,000 pounds of toxic chemicals (lead and arsenic), blasted through the mine's adit, through a creek, into the river, and downstream. Later, Rep. Rob Bishop (R-1st UT) declared, "There was nothing unintentional about [it]. [EPA] fully intended to dig out the

plug...." Incredibly, with EPA's On Scene Coordinator on vacation, his replacement, contrary to his express instructions, removed material from the face of the mine, hence the blowout.

Despite Administrator McCarthy's statement that the "EPA is taking responsibility" for the "tragic and unfortunate incident," it refused to pay the \$1.2 billion in claims stating federal law made it immune from liability. Lawyers for the slowly developing Trump administration made the same argument in filings in February; the issue is now before EPA Administrator Pruitt. Unfortunately, damage to waterways is not the only mess Obama's EPA left behind.

In 1980, Congress passed the Comprehensive Environmental Response, Compensation, and Liability Act (Superfund) requiring designation of hazardous waste sites that need prompt remediation. In 1986, a frustrated Congress mandated that the EPA designate only sites posing a "risk to human health and the environ-

ment," and not those, such as mining sites, with only trace toxic metals, which the EPA assumed, inaccurately, to be present throughout the site. One reason was to protect landowners. Designation has serious legal and financial consequence for anyone who, over the decades owned interest in the land; as potentially responsible parties (PRPs), they are liable for the full cost of cleanup.

Little wonder that, when the EPA, in a brazen attempt to obscure its responsibility, designated the "Bonita Peak Mining District"—not a true "mining district"—a geographically diverse area covering over 100,000 acres in San Juan County, encompassing three drainages, 46 specific mine sites, and two study areas, as a vast new Superfund site, it got attention. Sunnyside Gold Corporation, which, under the watchful eye of the EPA and State and local governments, engages in private remediation throughout the area was fearful the designation will not only scuttle the millions of dollars it invested in remediation but also will end the willingness of mine owners to engage in voluntary remediation. Sunnyside

sued.

Last month, represented by Mountain States Legal Foundation, Sunnyside drew the friends of the court support from two national mining groups and Frank J. Anesi who owns interest in several patented mining claims in San Juan County and in the Galena Queen Mine. Not only does the designation make him a PRP, the stigma attached to his property in or near the site drastically decreases property values and his ability to sell or use his property.

Mr. Anesi argues the EPA evaluated only 19 of the 46 mine sites and two study areas it included, in direct contravention of the mandate by Congress and, incredibly, the EPA's own regulations. Also, in an attempt to circumvent Congress, its regulations, and the holding of the Nation's top appeals court, the EPA coined a new term, "commingled release," to justify listing sites it had not evaluated. Finally and logically, if the EPA did not evaluate the sites, it could not determine if any were "commingled." The EPA decision, argues Mr. Anesi, is illegal.

It appears Administrator Pruitt has one more Obama mess on his already full plate.

Mr. Pendley, a Wyoming attorney, is President and Chief Legal Officer of Mountain States Legal Foundation and a regular columnist in Loggers World.



Call (800) 422-0074 or join
online at www.loggers.com

Membership Highlights...

- Master Logger Program (exceeds SFI logger training requirements)
- Monthly Springboard Magazine
- First aid/cpr and pilot car training
- Log A Load For Kids® - giving campaign for Children's Hospitals
- WCLA Insurance Agency - top coverage for the timber industry
- Employee benefits programs through WCLA's benefits partner: Kibble & Prentice
- WCLA Claims Management Program - providing the benefit of savings on L & I premium costs, improved safety standards and reduced claims costs

I BUY LOG SKIDDERS



- Dozers
- Loaders
- Excavators

1-503-545-0007



TAILGATE CONFERENCE

Mark Standley Jr., roadbuilder Steve Sohler and Harve Dethlefs compare notes about an in-progress job.

Save the Date
THE BEAT GOES ON
SEPT 23, 2017

David Heller Foundation

For Healthy Teen Hearts

WHAT:
Dinner & Auction

START TIME:
5pm

WHERE:
Red Lion on the River
Jantzen Beach

NEW VENUE

DAVIDHELLERFOUNDATION.ORG



IN THE OFFICE

LEFT: Mark Standley's wife Sarah Standley works in the Bighorn Logging office in Banks. BELOW RIGHT: Kelsee Miller (left) and Maggie Brower (right) keep things moving smoothly in Bighorn's office. BELOW LEFT: Harve's daughter Denise Dethlefs has been involved in the company for 24 years. Harve said that in addition to everything else she does, Denise interprets the legal language in contracts, and everybody appreciates that. Bighorn Logging uses custom software from Office Equipment Co.



NOW AVAILABLE!

The Limited Edition
LOGGERS WORLD
50th Anniversary
Window Sticker
 Only **\$8** each

Put one on your window
 and let the world know
 you read **Loggers World!**

You can also order on our website
 at www.loggersworld.com
 Visa or Mastercard or Paypal



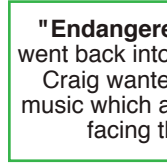
LOGGERS WORLD
50th Anniversary
1964 - 2014
 LIMITED QUANTITY AVAILABLE

Logging Music recently re-released and re-mastered!



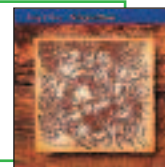
The Snag Fallers Ball
\$15.00
Plus Shipping

"The Snag Fallers Ball" - A light hearted collection of original songs about logging in Oregon and Alaska, and was first released in 1988. Craig wrote nine of the eleven songs on the album and co-authored two others with Don Beck, a long time friend, logger and musician also from the small town of Mapleton, Oregon.



"Endangered Species" - In 1989 Craig & Terry went back into the studio to record their next album. Craig wanted to share his point of view through music which addressed some of the political issues facing the logging industry at that time.

Endangered Species
\$15.00
Plus Shipping



You Hold Me Still
\$15.00
Plus Shipping

"You Hold Me Still" - In 1992 after many requests to record a gospel album they again returned to the studio and recorded eleven original songs. Two of the songs are co-written - one with Don Beck and one with Rick Barrows.

ALL 3 CD'S
Snag Fallers Ball, Endangered Species & You Hold Me Still

\$40.00
Plus Shipping



Songs from the Siuslaw
\$20.00
Plus Shipping

"Songs from the Siuslaw" (pronounced SY-u-slaw) is a heartfelt tribute to the hard working men & women in the logging industry and dedicated to the many men who have lost their lives doing one of the most dangerous and unappreciated jobs in the world. This a double CD set that was recorded live in Florence, Oregon in 1999 at the Florence Events Center. The first CD is saw-shaped and will play in top-loading and tray-loading CD players ONLY. It comes with a 20-page booklet- filled with humorous lyrics and old logging photos.

A Double CD Album!

Order on their website for fastest service:

www.ctmusicoregon.com

Or if you prefer not to order on-line you can call them at: 541-268-6910

Please send me Stickers at \$8 each
 Add \$1 for shipping
 While Quantities Last
WASHINGTON RESIDENTS: PAY \$8.77 + \$1 SHIPPING

Send your check or Money order to:
LOGGERS WORLD LLC
 P. O. Box 1631
 CHEHALIS, WA 98532

NAME:

ADDRESS:

CITY: STATE: ZIP:

PHONE: ()

(ALLOW 5 WEEKS FOR DELIVERY)

CROWLEY EQUIPMENT, INC.

(541) 688-5924 FAX: (541) 688-0704

MIKE (541) 954-7643 • ERIC (541) 206-2252 • DAN (541) 914-9222

4655 Cloudburst Way, Eugene, Oregon 97402



2014 Cat 568
4,800 Hrs.
P.O.R.



(2) Thunder-Bird 6140's
Both Ready To Go
Call for More Info.



2015 Cat 325D
3,700 Hours,
W/Southstar 600 - 6,000 Hours
P.O.R.



1995 Thunder-bird TSY255
Call for More Info.

LOG LOADERS

- 2015 CAT 325D
- 2014 CAT 568
- 2012 CAT 568
- 2004 CAT 320C
- 2000 CAT 330B W/2 PULLMASTER WINCHES
- 1985 CAT 225 ON RUBBER
- 2013 DOOSAN DX300LL
- 2015 JOHN DEERE 2154D
- 2014 DEERE 2954D
- 2013 JOHN DEERE 2954
- 2013 JOHN DEERE 2454D
- 2009 JOHN DEERE 2954D
- 2008 DEERE 2554
- 2008 JOHN DEERE 2054
- 2006 JOHN DEERE 2554
- 2004 JOHN DEERE 2054
- 1993 JOHN DEERE 690E
- 2014 HITACHI ZX350
- 2006 HITACHI ZX200
- 2011 KOBELCO SK295
- 2010 KOBELCO SK350
- 2007 KOBELCO SK210 W/JEWELL TONG THROWER
- 2006 KOBELCO SK210
- 2002 KOBELCO SK330
- 2016 KOMATSU PC240
- 2015 LINKBELT 290X2
- 2007 LINKBELT 370LX
- 2007 LINKBELT 290LX
- 2006 LINKBELT 210LX
- 2005 LINK-BELT 290LX
- 2003 LINKBELT 370LX
- 2000 LINK-BELT 3400Q
- 2000 LINKBELT 3400Q TONG THROWER
- 1990 LINKBELT 4300C2 W/2 PULLMASTERS
- 1997 LINKBELT 2800Q
- 1998 THUNDERBIRD 1240

PROCESSORS & DELIMBERS

- 2015 CAT 325D W/SOUTHSTAR 600
- 2006 CAT 320C W/LOGMAX 7000XT
- 2003 CAT 322C W/PIERCE 3348
- 2001 CAT 330B LL W/01 WARATAH 624
- 2015 DOOSAN DX300LL W/LOGMAX 10000
- 2007 HITACHI 350 W/09 WARATAH 624C
- 2004 HITACHI ZX330 W/2010 WARATAH 623C
- 2013 DEERE 2954D W/WARATAH 623C
- 2011 JOHN DEERE 2454D W/PIERCE 3348
- 2011 JOHN DEERE 2454 W/WARATAH 622B
- 2008 JOHN DEERE 2954D W/2010 WARATAH 624C
- 2007 JOHN DEERE 2554 W/PIERCE 3348
- 2006 JOHN DEERE 2554 W/DM4550
- 2006 JOHN DEERE 2554 RB W/WARATAH 622B
- 2006 JOHN DEERE 759G W/WARATAH 470

PROCESSORS & DELIMBERS Cont.

- 2004 JOHN DEERE 2554 W/DM4400
- 2002 JOHN DEERE 230LC W/DM4400
- 2009 KOBELCO SK260 W/LOG-MAX 7000XT
- 2006 KOBELCO SK290 W/WARATAH 622B
- 2012 KOMATSU PC200LC-8 W/LOGMAX 7000XT
- 2007 KOMATSU PC270LL W/WARATAH 622B
- 2015 LINKBELT 240X2 W/PIERCE 3348
- 2014 LINKBELT 240X2 LL W/WARATAH 622B
- 2013 LINKBELT 240X2 W/PIERCE 3348
- 2006 LINKBELT 240LX W/622B
- 2004 LINKBELT 240LX W/PIERCE 3348
- 2007 MADILL 1800LL W/WARATAH 622B
- 2005 MADILL 2800B W/WARATAH 622B
- 2004 MADILL 1800 W/WARATAH 624
- 2003 TIMBERJACK 1270D W/762C
- 2012 TIMBERPRO TL735B W/14 LOGMAX 7000XT

FELLER BUNCHERS

- 2016 CAT 552
- 2015 JOHN DEERE 643L
- 2013 JOHN DEERE 959K
- 2012 JOHN DEERE 959K
- 2009 JOHN DEERE 959J
- 2015 KOMATSU XT450L-2
- 2014 KOMATSU XT445L-2
- 2013 KOMATSU XT450L-2
- 2016 TIGERCAT L870C
- 2015 TIGERCAT L870C
- 2014 TIGERCAT L870C
- (2) 2014 TIGERCAT LX830C
- 2013 TIGERCAT LX830C W/QUADCO 2900
- 2009 TIGERCAT LX870C
- 2005 TIGERCAT L870
- 2005 TIGERCAT LX830C
- 2010 TIMBCO 445FXL
- 2006 TIMBCO T445EXL W/40° QUADCO
- 2006 TIMBCO T445EXL
- 2003 TIMBCO T445E
- 2000 TIMBCO T445D
- 2014 TIMBERPRO TL745B
- 2013 TIMBERPRO TL735B
- 2011 VALMET 450FXL

SKIDDERS / DOZERS

- 2009 CAT 527
- 2003 CAT 527
- 2003 CAT 525B W/ESCO SWING BOOM
- 2002 CAT 527
- 2001 CAT 527
- 2000 CAT 527
- 1999 CAT 527 GRAPPLE/WINCH
- 1995 CAT 518
- 1994 CAT D5H W/DUAL FUNCTION ARCH, GRAPPLE

SKIDDERS / DOZERS Cont.

- 1988 CAT 518
 - 1978 CAT D6D W/GRAPPLE
 - CAT D7F W/ESCO SWING BOOM
 - CAT 977L
 - 2010 JOHN DEERE 848H
 - 2006 JOHN DEERE 848G
 - 2005 JOHN DEERE 650J W/WINCH
 - 2005 JOHN DEERE 648G3
 - 1988 J D 550G W/RIPPERS
 - 2013 TIGERCAT 610C
 - (3) TIMBERJACK 380B'S
 - 1999 TIMBERJACK 560D
- CHIPPERS / GRINDERS**
- 2006 CAT 320C RB
 - 2003 CAT 315
 - MORBARK 30RXL
- YARDERS**
- CHRISTY HD YARDER
 - 2000 DIAMOND D2000
 - DIAMOND D210
- KOLLER K702 ON TRACKS
 - (2) KOLLER K602'S
 - KOHLER K501
 - 1996 MADILL 172
 - MADILL 171 ON HYD. U/C
 - (2) MADILL 071
 - (2) SKAGIT 739
 - SKAGIT 737
 - (2) THUNDERBIRD 6140
 - 1989 THUNDERBIRD TMY70
 - (2) THUNDERBIRD TMY50
 - (2) THUNDERBIRD TMY-40
 - THUNDERBIRD TSY255
 - THUNDERBIRD TY90
 - THUNDERBIRD TY-40
 - THUNDERBIRD TTY40
 - 1995 THUNDERBIRD TTY70
- EXCAVATORS**
- 2013 CAT 325D RB
 - 2014 JOHN DEERE 2454 RB
 - 2014 DEERE 2154D RB
 - 2006 CAT 320C RB
 - 2005 DEERE 3554 RB
 - 2005 HITACHI ZX200 LONG REACH
 - 2003 CAT 315
 - 1996 HITACHI EX270
 - 2003 KOBELCO SK210LC RB
- MISCELLANEOUS**
- 2009 CAT 950H
 - 2007 CAT 140H
 - CAT 977L
 - EXC. HEEL/GRAPPLE
 - 2016 FECON BH80
 - 2007 FECON BH80HD
 - FORD 9030 MOWER
 - (2) KENWORTH WATER TRUCKS
 - MEDFORD LOG FORKS
 - PIERCE 60" GRAPPLES
 - 2015 SOUTHSTAR QS500
 - 2006 VALMET 890.3
 - 1994 VALMET 860 FORWARDER
 - 2007 WARATAH 624
 - 2006 WARATAH 622B
- PARTING OUT**
- LINKBELT 210LX BOOM
 - THUNDERBIRD TSY-155



2007 Kobelco SK210
W/Jewell Tong Thrower,
12,000 Hrs.
P.O.R.



2014 Tigercat LX830C
5,400 Hours
P.O.R.



2012 John Deere 959K
6,300 Hrs.
P.O.R.



2001 Cat 527
Almost \$300,000 in recent work orders
\$250,000

www.crowleyequipment.com



1996 Madill 172
Call for More Info.



2009 Koller K702 Yarder
Ready to Go
\$375,000



2012 John Deere 2454
W/Pierce 3348, 8,000 Hrs.
\$180,000



2005 John Deere 3554
8,900 Hrs., Just line bored entire boom, Would make a great base for a tethering machine,
\$110,000



2003 Cat 527
\$175,000



BIGHORN'S WORKERS

LEFT: Bighorn processor operator Jim Whitney smiles for the Loggers World photographer. **ABOVE:** Hooktender Robbie VanDyke and Mark Standley Jr. get caught up on details out on the landing.

SHOW AND SELL

Send your Black and White or Color photo and a description of what you are selling (try to keep it within 20 words - 1 item per ad) and we'll publish it in Show & Sell for just \$100.00. Mail (or email to logworld@aol.com) your information to Loggers World LLC, P.O. Box 1631, Chehalis, WA 98532. Deadline is 5th of the month preceding publication.



250 Barko loader mounted on 1981 International paystar good condition ready to work \$18,000 OBO call Dennis 970-218-6762 or Don 970 218 0956 A



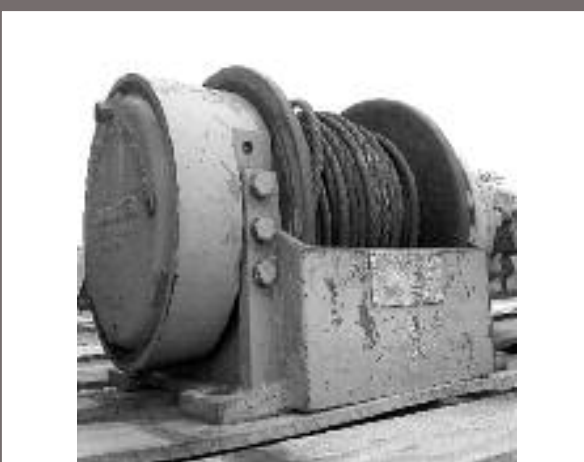
2013 Peterbilt, 550 Cummins, Lincoln Trailer, disc brakes, truck & trailer \$129,000 (360) 470-1535 A



2011 John Deere 3754D, Log Shovel 7,380 Hrs, Great Value, Well Maintained, 43' Log Loader Front, 63" Jewell Grapples, H.D. 450 Size Undercarriage, Side Entry Forestry Certified OSHA, Dual Swing Motors, A/C, \$215,000 Call Tim at (360)532-1485 A



1997 John Deere 648G, w/ESCO swing grapple \$45,000 Call Jon at 503-873-2086 A



Pullmaster 12,000 lb winch \$5,900 Contact 541-409-1065 for questions A



Barko 160 mounted on International cement truck runs good ready to work \$13,000 OBO Call Dennis 970 218 6762 or Don 970 218 0956 A

SHOW AND SELL

Send your Black and White or Color photo and a description of what you are selling (try to keep it within 20 words - 1 item per ad) and we'll publish it in Show & Sell for just \$100.00. Mail (or email to logworld@aol.com) your information to Loggers World LLC, P.O. Box 1631, Chehalis, WA 98532. Deadline is 5th of the month preceeding publication.



Tigercat Skidder, Grapple and Winch, powerful, new paint, tires, new motor and glass, snubber, too much to list, "Excellent Condition" \$59,500 425-432-5004
www.americanforestlands.com A



2014 Hitachi Forester, Like New 2,462 Hrs, 2X370F Log Loader, 43' Log Loader Front, 66" Young Grapples, UC Hi-Wide 9' 7" Gauge, Dual Swing Motors, Long Life Zink Free Oil, OSHA Certified Guarding, Rear Entry Cab, A/C, \$310,000 Call Tim at (360)532-1485 A



Waratah HTH 20 with top saw, large feed wheels, 3/4" butt saw, approx 4,000 hrs, lots of new parts, complete with computer controls & computer \$15,000 OBO 541-659-4303 leave a clear message or I can't call you back. A



2013 Hyundai 3220-9CTLL Log Loader, 3,800 Hrs, Good Value, Well Maintained, Cummins QSC 278-HD (Tier 3), Waycon HD Guarding Pkg, UC 28" High, 11' 9" Wide, 41' Logger Boom, 48" Tilt Cab, Side Entry, 63" Jewell Grapples \$225,000 Call Tim at (360)532-1485 A

ADVERTISE

YOUR ITEMS IN THIS SPACE ONLY...

\$100⁰⁰

CALL

1-800-462-8283



6140 Thunderbird Swing Yarder, all lines & rigging, whistles, new gear and bearings 18 mos ago, Super Eaglet Carriage \$372,000 (360) 470-1535 A



(2)1987 Timbcos one ready to work 6bta c-series Cummings good condition good undercarriage second machine a parts machine will run \$28,000 OBO call Dennis 970-218-6762 or Don 970-218-0956 A



Tiger Cat 855c with Waratah FL85 series 2 felling head, grouser ext. and tow point. Call 253-405-3586 for more information and pricing. A



Allied 411 Free Spool Winch with 1050' of new 5/8" line with hydraulic drive motor & Allied 411 Free Spool Winch with some 1/2" line with hydraulic drive motor. **Both for \$30,000** Contact 541-409-1065 for questions A



Delimber Komatsu PC 220 LC, DENIS 3000 stroker, Recently removed off of working job \$20k or best offer Located in Sweet Home 541-912-2549 A



2001 Madill Yarder, Extra skyline break, grapple, MSP, and Super Eaglet, 3 guyline, Cummins. Call 253-405-3586 for pricing and more information A



Hahn Harvester, Whole Tree Processor, 471 Detroit motor, runs excellent, dolly rebuilt, good machine! Needs nothing, "Excellent Condition" \$19,500 425-432-5004
www.americanforestlands.com A

COMING EVENTS

JULY

4



ESTACADA TIMBER FESTIVAL

ESTACADA, OREGON
 FOR INFORMATION:
<http://estacadatimberfestival.com>

21-22



DARBY LOGGER DAYS

DARBY, MONTANA
 FOR INFORMATION:
loggers@darbyloggerdays.com

8



AMBOY TERRITORIAL DAYS LOGGING SHOW

AMBOY, WASHINGTON
 FOR INFORMATION:
<http://www.tdays.org/amboy-log-show.html>

AUGUST

10-13



MORTON LOGGERS JUBILEE

JUBILEE ARENA
 MORTON, WASHINGTON
 FOR INFORMATION: (360) 523-4049

SEPTEMBER

28-30



AMERICAN LOGGERS COUNCIL

2017 ANNUAL MEETING
 NATCHEZ, MISSISSIPPI
 FOR INFORMATION: (409) 625-0207

SEND EVENT NOTICES TO: Publisher, Loggers World Magazine, P. O. Box 1631, Chehalis, WA 98532-8425. Please include your event's symbol. Items used at discretion of the publisher.

Deadline for August 2017 issue: JULY 12th.

Advertiser's Index

ACME MANUFACTURING16	LOGGERS WORLD SUBSCRIPTION30
AMERICAN LEGACY FIREARMS.....3	MADSEN'S SHOP & SUPPLY, INC.....6
APPELO ARCHIVE CENTER.....17	MPI EQUIPMENT9
CASCADE TRADER5	N. C. MACHINERY Co ...11
CC HEAVY EQUIPMENT INC.7	OLIVER HAMMER CLOTHES SHOP.....7
COWLITZ RIVER RIGGING.....14	PACIFIC FIBRE PRODUCTS, INC.7
CROWLEY EQUIPMENT INC27	PERSONS ENTERPRISES ..23
CT MUSIC.....25	ROTHENBUHLER ENGINEERING.....19
DUKE'S EQUIPMENT17	SCHAEFER ENTERPRISES 19
EAGLE CARRIAGE & MACHINE INC.....10	SHOW & SELL.....28, 29
FEENAUGHTY MACHINERY Co.....13	TRIAD MACHINERY, INC 14
FRALEY TRACTOR, INC ...8	TRIPLE T EQUIPMENT ...26
FULL CIRCLE FINANCE....6	WALLINGFORD'S INC.13
HIGH CASCADES AGENCY10	WASHINGTON CONTRACT LOGGERS ASSOC.....2323
IRONMART26	WRIGHT ENTERPRISES ...12
LOCK & LUBE.....13	ZENDER EQUIPMENT15

SUBSCRIBE TODAY! LOGGERS WORLD

"The Logger's Magazine," is
concerned with what
concerns loggers

12 Issues - 1 Year Subscription

\$25⁰⁰

WA Residents pay \$27.40 w/tax
Inside U.S.A.



Send your check or Money order to:

LOGGERS WORLD LLC
 P. O. Box 1631
 CHEHALIS, WA 98532



Offer expires
December 31, 2017

- \$25.00 for 1-Year Subscription
- \$50.00 for 2-Year Subscription
- \$100.00 for 4-Year Subscription

WASHINGTON RESIDENTS PAY \$27.40, \$54.80 OR \$109.60 w/SALES TAX

NAME:.....

ADDRESS:.....

CITY:..... STATE:..... ZIP:.....

PHONE: ().....

(ALLOW 5 WEEKS FOR DELIVERY OF FIRST ISSUE)