

# LOG TRUCKER

VOLUME 44 NUMBER 10

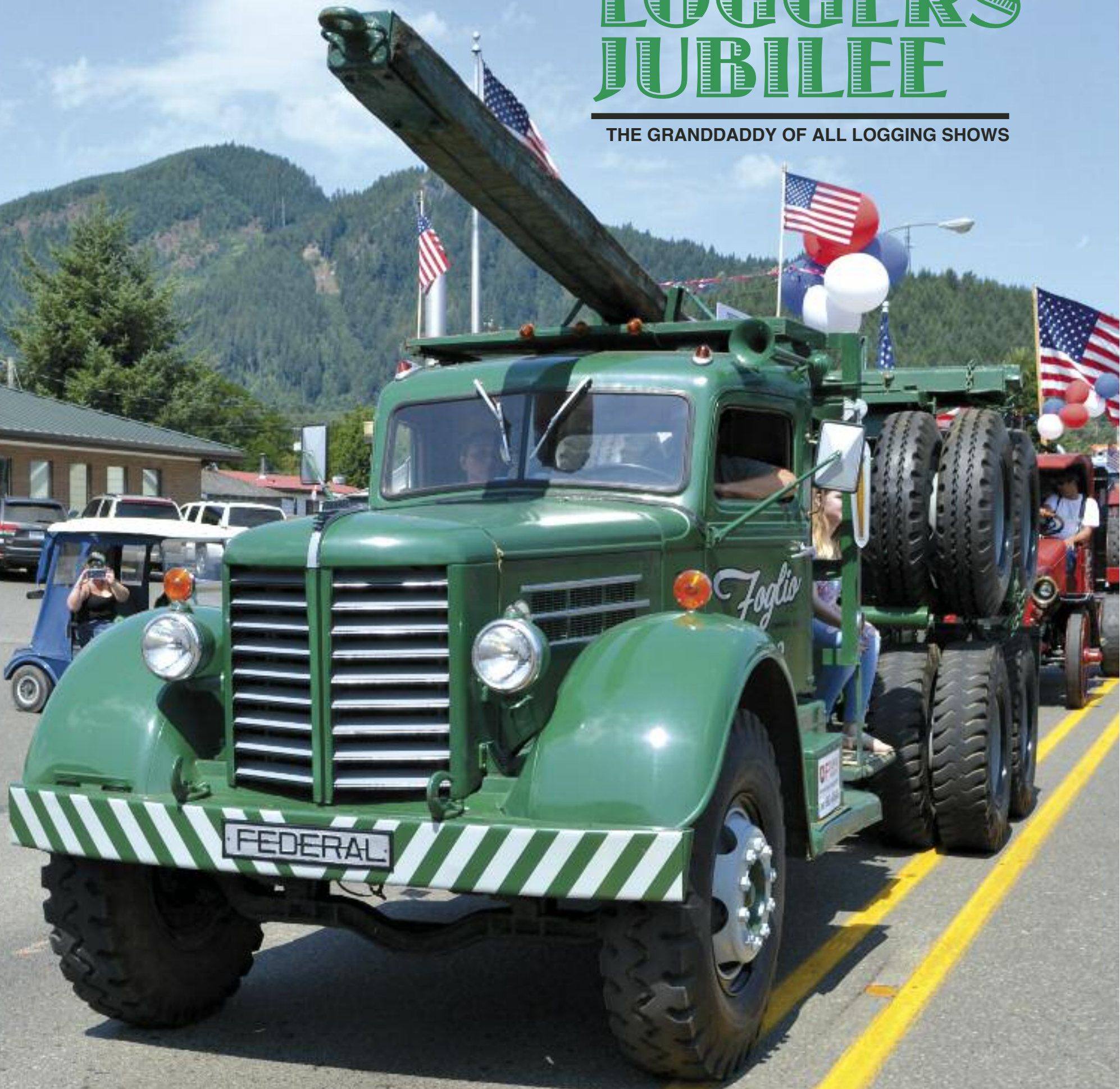
To Advertise Call (800) 462-8283

OCTOBER 2017

MORTON

## LOGGERS JUBILEE

THE GRANDDADDY OF ALL LOGGING SHOWS



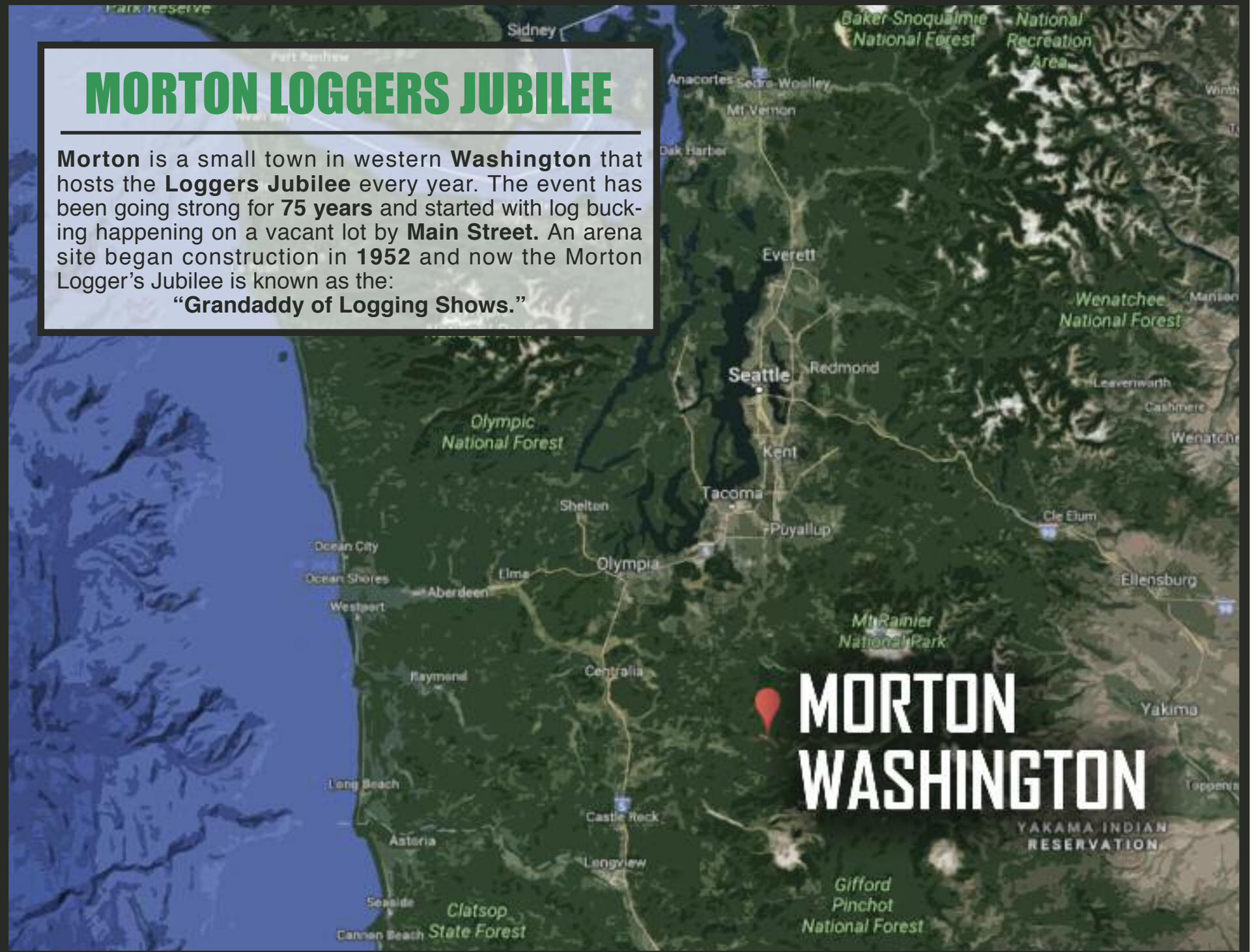


# FEATURED IN THIS MONTH'S ISSUE

## MORTON LOGGERS JUBILEE

Morton is a small town in western Washington that hosts the **Loggers Jubilee** every year. The event has been going strong for **75 years** and started with log bucking happening on a vacant lot by **Main Street**. An arena site began construction in **1952** and now the Morton Logger's Jubilee is known as the:

**"Granddaddy of Logging Shows."**



## IN THIS ISSUE



**ON THE FRONT:** This 1951 Federal log truck is owned by Tony Foglio and was part of the Morton Loggers Jubilee Parade. Be watching for a future article about the log trucks of Tony and his father's collection.

See "On Parade" starting on Page 4

**4. ON PARADE**  
MORTON LOGGERS JUBILEE *by Loggers World*

**20. ADVERTISERS INDEX**  
WE'VE GOT WHAT YOU WANT

**LIKE WHAT YOU SEE  
IN LOG TRUCKER?**

**Buy a Subscription so you don't miss a single issue:  
[www.loggersworld.com](http://www.loggersworld.com)**

## LOG TRUCKER

*Founded in 1975 by Finley Hays*

*Published by*

**LOGGERS WORLD LLC**

Phone **(360) 262-3376**

PUBLISHERS.....Kevin & Nancy Core  
EDITORS EMERITI.....Finley Hays, Mike Crouse  
EDITOR/WRITER.....Brandon Hansen  
ADVERTISING.....Kevin Core  
OFFICE MANAGER.....Nancy Core

**POSTMASTER:** Send address changes to:

**LOGGERS WORLD LLC,**  
P. O. Box 1631, Chehalis, WA 98532-8425

**E-Mail:** [logworld@aol.com](mailto:logworld@aol.com)

**SUBSCRIPTION RATE (In U.S.A.):**  
**\$25.00 per year; Two years for \$50.00**

LOGGERS WORLD LLC cannot and does not assume responsibility for the contents of any advertising in Loggers World. The representations made by advertising is the responsibility of the advertiser and not Loggers World. Loggers World does not knowingly accept advertising that is false or misleading. The limit of Loggers World liability in case of a mistake made in advertising copy by Loggers World will be the charge of the actual space containing the error or less for that particular advertisement





# GENERAL TRAILER

## Making Work Easier

### ★ GENERAL TRAILER ★

*Building the Best...Repairing the Rest.*

With the proven quality of this new GENERAL Transfer System, work is easier for Rocky Mountain Construction headquartered in Klamath Falls, OR. Thanks, Rocky Mountain!

**Thank You, Nix Domes of Willamina, OR!**

**Call for a Quote!**

**Purchased New GENERAL Cross Gate Belly Dump.**

Excellent equipment means less breakdowns and easier work, which is why Nix Domes located in Willamina, OR purchased this 2017 GENERAL Crossgate Belly Dump. Thanks, Nix!

**Thank You, Gary Sunstorm of Gualala, CA!**

**Call for a Quote!**

**Got New Peerless Long Logger.**

When you have the right tool for the job, work is always easier. That's why Gary Sunstorm out of Gualala, CA stopped by the GENERAL and got this new Peerless Long Logger to make his job a little easier. Thanks, Gary!

**New Ranco ED26-34 End Dump**

**In Stock! Only \$42,500**

Making your work easier is what motivates us at the GENERAL, and why we offer rugged, quality equipment, including this new Ranco ED26-34 End Dump. Give us a call today and let us make your life easier.

**Call the General's Headquarters.**  
**1-800-452-9532**

**Thank You, Rocky Mountain Construction of Klamath Falls, OR!**

**Call for a Quote!**

**Purchased New GENERAL Transfer System.**

**New 35-Ton Felling Lowboy**

**Only \$48,000**

Model XF-70-2 Includes FET

Your business is all about hauling really big loads for your customers whenever they call, so make it easy on yourself to be ready to roll with heavy-duty equipment, like this 35-Ton Felling Lowboy from the GENERAL.

**Used 4-Axle Pup Trailer**

Axle#1 Shipped Loose

**Only \$16,000**

Looking for the best equipment on the market to make your work easier? Look no further than this quality used 4-Axle Pup Trailer that's waiting for you at the GENERAL.

**New 2017 and 2018 Peerless 53 Ft. 4-Axle Drop Center Chip Vans in Stock**

**New in Stock**

**Peerless Live Floor Trailers**

**Call Jerry for a Blowout Quote Today!**

**Call Jerry Blair in Oregon City 1-800-452-9683**



### OCTOBER PARTS SPECIALS



H042516-SSP High Power Sq. LED Spot Light	\$47.50 Ea
H042516-SWFL High Power Sq. LED Flood Light	\$47.50 Ea
H042006-SWFL Slimline Flood Light	\$31.50 Ea
H048006-SWFL 6 Diode 1350 Lum Light	\$33.50 Ea
H047524-W 54 Diode 400 Lum Light	\$20.50 Ea
H034003SMD 3/4" Mini Round LED Red	\$4.25 Ea
H034003SMD 3/4" Mini Round LED Amber	\$4.25 Ea
H030006-SSP HP Mini Round LED Work Lamp	\$33.50 Ea



7003 Painted Standard Winch Bar	\$9.95 Ea
7004 Chrome Combo Winch Bar	\$14.50 Ea
7006 Painted Combo Winch Bar	\$12.75 Ea
4530SL 4"x30' Winch Strap Slip Loop	\$12.00 Ea
4530FH 4"x30' Winch Strap Flat Hook	\$12.00 Ea
4530VR 4"x30' Winch Strap D. Ring	\$14.00 Ea



3830 14 LED STTR Dual Color Light	\$17.50 Ea
38320 17 LED Amb/Amb Cablite RPLMT	\$12.95 Ea
38329 17 LED Amb/Amb Square Cablite	\$37.50 Ea
38300 LED License Light	\$6.95 Ea
90000 Blow Gun Kit	\$13.75 Ea



<b>Safety Products</b>	
1006 Triangle Reflector Kit	\$17.50 Ea
28844 2"x12" White Reflective Tape	\$ .95 Ea
28845 2"x18" 11R/7W Reflective Tape	\$ .85 Ea
0720-02 20-Minute Fusee	\$2.10 Ea
0730-02 30-Minute Fusee	\$2.35 Ea
3C 3-Minute Smoke Bomb	\$10.75 Ea



<b>Warm Ups</b>	
1016 White OX w/elastic band Glove	\$6.85 Pair
3001 Insulated Rubber Glove	\$3.95 Pair
3336 Majestic Polar Penguin Glove	\$8.55 Pair
4034 Cotton Lined Leather Glove	\$5.95 Pair
3708LK Nitrile Tough Glove	\$4.20 Pair
174653-LOGO Logo Hot Mill Gloves	\$3.25 Pair

NOTE: NOT ALL ITEMS ARE IN STOCK AT ALL LOCATIONS. HOWEVER, WE WILL BE HAPPY TO TRANSFER INVENTORY TO THE BRANCH NEAREST YOU.

**Visit [generaltrailerparts.com](http://generaltrailerparts.com)**

#### SPRINGFIELD

1420 South B Street  
Springfield, OR 97477  
Phone: (541) 746-8218  
1 (800) 452-9532  
Fax: (541) 726-4707

#### MILTON

7200 Pacific Highway East  
Milton, WA 98354  
Phone: (253) 926-8903  
1 (800) 562-8380  
Fax: (253) 926-8908

#### OREGON CITY

21195 S. Highway 99 E.  
Oregon City, OR 97045  
Phone: (503) 263-2702  
1 (800) 452-9683  
Fax: (503) 266-9498

#### REDDING

5875 Eastside Road  
Redding, CA 96001  
Phone: (530) 246-3813  
1 (800) 475-1057  
Fax: (530) 246-3823





### ROLLING COAL

J. R. Boehme rolls some coal during the parade with his 1988 Peterbilt.

# THE GRANDDADDY OF THEM ALL

**MORTON LOGGERS JUBILEE  
HITS 75 YEARS OF  
SHOWCASING THE  
LOGGING INDUSTRY  
IN WESTERN WASHINGTON**

The origin of the Morton Loggers Jubilee is a bit in question, as many recollections depend on whose memory is the best, but most people say it was either 1937 or 1938 when the Granddaddy of all Logging Shows started.

The organizer of the show was either F.E. Coleman or Ed Baker, Peterman Timber Company superintendent and Jack Sutherland, superintendent of Kosmos Timber. Others say it was J. Logmire since having a logging show in front of his auto and truck repair shop was profitable!

Log bucking was held on a vacant lot on Main Street and tree climbing was later added down the road. To advertise the show, a "hillbilly" band toured nearby towns including Tacoma, Chehalis and Centralia. There was also a mock "hillbilly" wedding on Main Street was a feature

(Continued on Page 8  
**See "JUBILEE"**)

## GOING OUT OF BUSINESS SALE

**G. W. Gannon (Bill) Equipment Inc.**

After 35 years of enjoying his work,  
Bill passed away.

Now we must sell all his trucks, trailers,  
misc. parts, tools and much more.

***Come in to see what you might  
need and talk price.***

Thank-you for your friendship and business.

**541-928-3483 • 541-223-1665**

Cleta Gannon, 3194 Rolland Dr., Tangent, OR 97389



## GEAR BOX Inc.

TRANSMISSION & DIFFERENTIAL REBUILD & REPAIR

1037 State Street (Exit 79 off I-5) • Chehalis, WA.

8:00 a.m. - 5:00 p.m.  
Monday - Friday

**(360) 748-8350**

***Let us Lower Your Cost Per Mile  
with our  
High Quality Time & Material Rebuilds***

★ FULLER  
★ EATON  
TRANSMISSIONS  
TRANSFER CASES  
★ SPICER  
★ ROCKWELL  
DIFFERENTIALS  
AUXILIARIES

Complete Time &  
Material Rebuild  
Unit Comes with a  
**1 Yr. Unlimited  
Mileage Warranty**



*We Pride Ourselves on Genuine OEM Parts*

**CUSTOM BUILD or EXCHANGE**





### BIG BLUE

These three log loads are hauled by a Kenworth T800 operated by Brintech out of Mossyrock, Washington.



**Betts®**  
TRUCK PARTS & SERVICE  
Earning Your Trust, Mile after Mile®

# STEER AXLE ALIGNMENT

October **SPECIAL**

**\$79<sup>95</sup>**  
~~\$125~~

## SHOP SERVICES

- LASER ALIGNMENT
- STEERING REPAIRS
- AXLE SLEEVEING
- SUSPENSION REPAIRS
- LEAF SPRING NEW/REPAIR
- BRAKE/WHEEL END REPAIR
- DRIVETRAIN REPAIR
- TRAILER CHASSIS REPAIR
- WELDING WORK
- 50-POINT INSPECTIONS
- DOT INSPECTIONS
- PRESS WORK
- CUSTOM U-BOLTS
- FLYWHEEL TURNS
- DROP AXLE INSTALLATION

**DROP IN - NO APPOINTMENT NEEDED BEFORE NOON!**



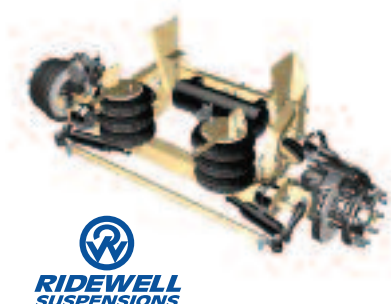
## SUSPENSION EXPERTS OFFERING A FULL LINE OF TRUCK PARTS



### NOW HIRING!

- SERVICE MANAGER Portland, OR
- PARTS DELIVERY DRIVER Portland, OR (Heavy Duty) – Must have driving experience, including customer service.
- OUTSIDE SALES REPRESENTATIVE Portland, OR – Must have C Driver's License and sales experience.

Posted on: <http://www.betts1868.com/employment>  
For more info. please contact:  
Recruiter: Raquel Guerrero  
[Raquel.Guerrero@Betts1868.com](mailto:Raquel.Guerrero@Betts1868.com)



**WE PROUDLY INSTALL  
& SELL OVER 150 TOP  
BRANDS!**



### PORTLAND

NE Columbia Blvd.



NE Portland Highway NE 42nd Ave.

### Betts Truck Parts & Service

4334 NE Columbia Blvd.  
Portland, OR 97218

**503.289.8875**  
**BettsTruckParts.com**





## KENWORTH C500

This clean 1986 Kenworth C500 Lowboy is owned by Severson Road Contractors and is hauling a DoosanDX 225 Excavator in the Morton Loggers Jubilee Parade.

## Advanced Hydraulic Supply

4444 N.E. 148TH Avenue, Portland OR, 97230

**1-877-887-1730 • (503) 289-0354**

**FORESTmaster**

**SUPERIOR PERFORMANCE  
HOSE ASSEMBLIES FOR  
FORESTRY MACHINES**



- Superior Abrasion Resistance
- Improved Service Temperature to -46° C (-50° F)
- High Flexibility
- High Tensile "Textile" Braid Layer

 <b>SCHOTT</b> PARTS & ACCESSORIES <b>503-463-0500</b> CALL FOR OUR CATALOG!		<b>I-5 Exit 263</b> 8983 TRUCKMAN WAY SALEM, OR 97303 SHOWROOM HOURS Monday-Friday: 8:00-5:30 <b>WWW.TRUCKCHROME.COM</b>	
 1 <sup>st</sup> place - Ryan Van Dyke	 2 <sup>nd</sup> Place - Ken Talley	 3 <sup>rd</sup> Place - Norm Butler	<p><b>Thank You for a great 2017 Brooks Show!</b></p>
 <b>HOWES LUBRICATOR Diesel Treat</b> Quality Products For The Trade Since 1939 • Anti-Gel • Adds Lubricity • Increase MPG AVAILABLE • 15 oz. • Quarts IN... • 1/2 Gallons Case Pricing Available		<b>CHROME BUMPERS</b> We Have <u>Square</u> & <u>Tapered</u> Bumpers, 12", 16", 18", 20" & 22" SPECIAL CUT OUTS - No Problem!  16" Tapered	
 <b>CHROME SPRING LOGGER HANGERS</b> <b>\$89.95 PAIR</b> Sale!		<b>Your Home for Chrome!</b> • BUMPERS • STACKS • LED LIGHTS • CHROME • FLAPS • FENDERS Like Us On Facebook	





## LOCKED AND LOADED

J. R. Boehme brought a nice parade load of logs with his 1988 Peterbilt and Lincoln Trailer

Check out our 2017  
line of dump boxes  
Call for a quote today!



# Lincoln

**INDUSTRIAL  
CORPORATION**

We manufacture & service  
Lincoln Log Trailers  
Parts & Service Shop  
available for most brands



Monday – Friday 7:30 – 4:30

Saturday 8:00 – 2:00

4130 Tumwater Truck Route,

Port Angeles 98363

1-800-492-6122 / 1-360-457-6122

[www.lincolnindustrialcorp.com](http://www.lincolnindustrialcorp.com)

YouTube Like us on Facebook



We offer welding services and  
general welding supplies,  
plasma cutting,  
stock steel, and propane



Auburn  
Office

Wayne Kinberg  
1-888-212-0514  
1-360-461-3795



Flat Beds,  
Tilt Beds,  
Hooklifts,  
Truss and  
Tilt Trailers





## JUBILEE

(Continued from Page 4)

in early shows along with plywood axes.

The Jubilee grew and was moved from Main Street to the present grade school playground. The Jubilee wasn't held during World War II but returned in 1946.

The Morton Chamber of Commerce was able to accumulate funds each year and bought two blocks in town that would give the Jubilee a permanent home while also giving Morton youth athletics a lit field.

Ernie Loden of Mineral began clearing the site for the new Jubilee grounds in 1952. Using a CAT owned by the St. Regis Company. Loden was aided by volunteers who lugged roots and limbs while burning slash and getting the grounds ready.

Public utilities employees and boys from the state fire camp were responsible for getting lights up on the grounds. The field was graded and seeded and used for football when the fall came.

On the new grounds. Governor Arthur B. Langlie attended the Jubilee to commemorate the event.

Through the years, pertinent concrete bleachers were constructed by Grose Construction Co., a portable all-purpose building was added, a Queen's contest was added and the first Jubilee float was built.

Jubilee Park was added and gave people a place to camp and enjoy the area. The park now has a Little League ball field and playground equipment.

An old steam donkey - used in the area around 1918 - was donated by Otto and Bill Studhalter to be displayed in the park before being moved to Backstrom Park.

Eugene "Bing" Bingman oversaw the arena events for 30 years, and

his nephew Charlie Russell joined him in 1989. In 2004, Brian Dalton took over the responsibilities.

Through the years Gil Coleman, Gary Coleman, Reg Lester Jr. and Mike Fairhart handled the announcers mic, and they were all from Morton. In 2009, Rick Stockdale joined Fairhart in the announcing booth.

The Jubilee features

lawnmower races, a competition crowning the Jubilee queen, sporting junior events, a parade, displays of logging equipment along with food and craft vendors.

The lawnmower races started 40 years ago and anyone can enter the race. Many lawnmowers sound like a race car, thanks to tinkering competitors. Not surprisingly, pets are not

allowed to attend the event.

The Jubilee hit 50 years in 1992 and is still going strong.

The logging show features axe throwing, choker setting, birling (log rolling), single and double bucking, stock and hot saw, springboard chop, speed climbing, tree topping, vertical and horizontal chop, obstacle pole

bucking, Jack N' Jill, and Jill N' Jill bucking.

The Jubilee also hosts bed races down city streets which turns into a popular spectacle for many.

It's a thriving event for the town of Morton which was built on the logging industry and its still a big part of the eastern Lewis County town.



# ST. JOHNS

THE POWERTRAIN PEOPLE

## TRUCK & EQUIPMENT



**REBUILT TRANSMISSIONS/ REAR ENDS**  
(ALL SOLD EXCHANGE)



### FREE FREIGHT!

St. Johns will pay the Freight to you on any REBUILT TRANSMISSION or REAR END sold in Washington, Oregon, or Idaho

#### DIFFERENTIALS - ROCKWELL

PRICES VARY BY RATIO, ALL PRICES STARTING AS LOW AS...

RD20-145	\$2,140.00
RR20-145	1,240.00
RDL20-145	2,615.00
RRL20-145	1,765.00
RD23-160	3,165.00
RR23-160	1,865.00
RDL23-160	3,715.00
RRL23-160	2,440.00
SQHD	1,965.00
SQHR	1,610.00
QD100	1,750.00
QR100	1,190.00
SSHHD	2,215.00
SSHR	1,390.00

#### EATON:

DT461P	\$4,650.00
RT461	3,050.00
DD461P	4,915.00
RD461	2,800.00
DS461P	3,425.00
RS461	1,800.00
DS402	1,800.00
RS402	1,175.00
DS404	1,700.00
RS404	1,150.00
DT402	2,875.00
RT402	1,950.00
DD404	2,825.00
RD404	2,050.00
DSH40	2,300.00
RSH40	1,575.00
DDH40	3,550.00
RDH40	2,200.00

Many Other Transmissions And Differentials Available... Call Us First!  
Custom Repair For Your Unit  
**CALL US FIRST!**

#### CUMMINS® MANIFOLDS

3801322 855 LARGE PORT	\$325.00
3801915 855 SMALL PORT	295.00

#### FLYWHEEL HOUSINGS

CUMMINS® FW HOUSINGS	CAT® FW HOUSINGS
3680063 ISX	\$795.00
3036005 855/N14	399.00
1302802 3406E	\$1295.00
1694153 C15	1795.00

#### REPLACEMENT FLYWHEELS



CUMMINS FLYWHEELS	
3071535 855/N14	\$435.00
3016495 855	375.00
CAT FLYWHEELS	
9L6392 3208	\$425.00
9Y9313 3208	399.00
4P4797 3406	465.00
DETROIT FLYWHEELS	
23509709 SERIES60	\$450.00

#### FULLER

RT/RT06613	\$3,075.00
RT8609A	3,150.00
RT012513	2,550.00
RT012515	2,350.00
RTX12609B	2,325.00
RTX14609B	2,400.00
RT014613	2,625.00
RTLO14613BP	3,350.00
RTX14708LL	2,600.00
RTX14710B/C	2,700.00
RTX14710B/CP	2,900.00
RT14715	3,200.00
RT015613P	3,000.00
RTX15710B/CP	2,900.00
RT0/RTX15715P	3,300.00
RTX16710B/CP	2,900.00
RTAO16710B/C	4,000.00
FRO16210B/C	3,395.00
RTLO16610BP	2,925.00
RTLO16618A	3,550.00
RTLO14713A	3,125.00
RTLO16713A	3,600.00
RTLO16718B	3,900.00
RTLO16913A	3,600.00
RTLO16918B	4,150.00
RTLO18718B	4,150.00
RTLO18913A	3,895.00
RTLO18918B	4,395.00
RTLO20913A	4,675.00
RTLO20918B	4,875.00
RTLO22918B	6,550.00

#### ROCKWELL

RMX10-145A	\$3,465.00
RMX10-165A/C	3,415.00
MO16G10C	3,915.00

#### POWERSTEERING PUMPS / GEARS

##### PUMPS

- Eaton
- Parker
- Vicker
- Saginaw
- ZF
- TRW

##### GEARS

- Ross/TRW
- Saginaw
- Bendix
- Gemmer
- Sheppard



Same Day Shipping!

### EATON/FULLER TRANSMISSIONS



Eaton/Fuller Transmissions now come with a TWO YEAR UNLIMITED MILEAGE WARRANTY.

• All Eaton/Fuller Transmissions are dyno tested.

• Our Fuller Transmissions are remanufactured using genuine OEM overhaul kits, gearing, synchronizers and air systems. We are one of the few rebuilders in the nation using all OEM parts in our Fuller transmissions.

### Fuller 18 speeds



Built with

100% NEW OEM gearing

RTLO18918B ...\$6895.00 exchange

RTLO20918B .....7295.00 exchange

RTLO22918B .....7695.00 exchange

Call for outright pricing and exchange details

**FULL SERVICE TRUCK & TRAILER REPAIR**  
**Call St. Johns First!**

8435 N. CRAWFORD STREET • PORTLAND, OREGON 97203

NATIONWIDE TOLL FREE:

**(800) 222-8435**

PORTLAND:

**(503) 286-8336**

FAX:

**(503) 283-3423**



## ALL IN THE FAMILY

This 1926 AB Mack Log Truck is owned by Tony Foglio. It was bought new by the city of Wallace, Idaho and used as a water truck. Then it was purchased by Tony's grandfather, John Seaver and later sold to Tony's other grandfather, Al Foglio. The Mack was passed down to Tony's father, Gary Foglio and then to Tony Foglio in 1988.



**Pickup  
in Oregon**  
**NO SALES TAX!**  
**We Do  
Limited Installs  
Like for Like**



**CAT  
C-15  
6NZ**

Several  
Single  
Turbos,  
Super  
Conditon

Low Miles, **CALL!**

**We Buy**  
**Running, Wrecked,  
End of Life Trucks,  
and Stand Alone  
Parts, Too!**

**DETROIT SERIES "60"**



Dedec III, IV & V Engines Available,  
With Jakes, Good Condition



We are your  
**NORTHWEST HEADQUARTERS**  
for 46,000-lb. **ROCKWELL MERITOR &  
EATON TANDEM REARENDS**  
all ratios, all suspensions, rebuilt gearheads  
& parts available - **CALL NOW!**



**REBUILT TRANSMISSIONS**

RTO-14713 . . . . \$3,100	RTO-16915 . . . \$2,650
RTO-16713 . . . . \$3,300	RTLO-16618 . . . \$3,200
RTO-16913 . . . . \$3,500	RTLO-16718 . . . \$3,850
RTO-18913 . . . . \$3,750	RTLO-18918 . . . \$4,350
RTO-14715 . . . . \$2,750	RTLO-20918 . . . \$4,625



# WHOLESALE TRUCK PARTS & EQUIP.

Nationwide & Canada

**1-800-547-1315**

5925 N.E. Portland Highway, Portland, OR 97218

HOURS: 8:00 - 5:00 Monday thru Friday

FAX# 1-503-288-6337 • DELIVERY AVAILABLE

**503-288-6333**



**PURPLE PETE**

Holister Trucking also brought out their Purple Peterbilt.



# DON'T LEAVE YOUR PROFIT IN THE WOODS

DON'T LEAVE YOUR PROFIT IN THE WOODS.

LOADMAN ONBOARD SCALES HELP YOU HAUL SMARTER BY MAXIMIZING EACH LOAD AT THE SITE, PREVENTING INEFFICIENT TRIPS CAUSED BY UNDERLOADING.

CONFIDENT YOU ARE HAULING A FULL LOAD THAT IS SAFE AND LEGAL EVERYTIME ALLOWS YOU TO BE IN CONTROL OF YOUR TIME AND EXPENSES.

LEARN MORE: CALL 1.888.562.3626 OR VISIT [WWW.LOADMEN.COM](http://WWW.LOADMEN.COM)







### BALDWIN LOGGING

Baldwin Logging's 1979 Kenworth A Model with General Lee paint scheme is a real crowd pleaser.

## ***Thank you Dave McIrvin***

for the purchase of a

**2018  
ALPINE  
Long Log  
Trailer**

with all the rigging



**ALPINE**  
INDUSTRIAL, LLC  
LOG TRAILERS

**CALL (208) 877-1714**

2810 Big Bear Ridge Road • P.O. Box 341, Deary, ID 83823

Fax: 208-877-1198 • EMAIL: [alpineindustrial@moscow.com](mailto:alpineindustrial@moscow.com)





### NOT YOUR TYPICAL PARADE LOAD

Dustin Hines brought his Peterbilt cabover with a non-typical parade load. Loggers World Publisher Kevin Core sees this clean Pete cabover all over during his travels.



Call (800) 422-0074 or join  
online at [www.loggers.com](http://www.loggers.com)

### Membership Highlights...

- Master Logger Program (exceeds SFI logger training requirements)
- Monthly Springboard Magazine
- First aid/cpr and pilot car training
- Log A Load For Kids® - giving campaign for Children's Hospitals
- WCLA Insurance Agency - top coverage for the timber industry
- Employee benefits programs through WCLA's benefits partner: Kibble & Prentice
- WCLA Claims Management Program - providing the benefit of savings on L & I premium costs, improved safety standards and reduced claims costs

### SERCO

TRUCK MOUNT TRAILER MOUNT

#### LOG AND PULP LOADERS

#### Several Used Sercos Available



NEW SERCO 160PH POLE HANDLING PACKAGE IN STOCK, lifts up to 110' poles



2008 FORD F550 4X4, 6.4 liter diesel, auto trans, 17,950 GVW, 9' - 6 compartment service body, 12,000# bumper winch, 50 gallon slip tank w/electric pump STK. #5409



2008 PETERBILT 335, PX8, 330 hp, Jake, 12,000# front, 21,000# rear, 11' service body, National N65 Knuckle Boom, 7000# capacity, 33' boom, remotes, 4400# winch, Miller welder, hyd driven air compressor STK. #5374



2009 INTERNATIONAL 7400, Max Force DT, 260 hp, Allison auto, 14,000# front, 40,000# rear, 2015 United 4000 Gal Water Tank, self-loading, 2 front, 2 rear, 2 side sprays, rear hose reel STK. #5085



NEW SERCO 160PH LOG LOADER, 25' reach, 400° rotation, 46" continuous rotating grapple, 18,826# capacity, 10° off set jib STK. #5329

*Sold & Serviced by*



**L&M Truck Sales, Inc.**  
4001 E. Boone Ave.  
Spokane, WA 99202  
800-796-9813





### LOWBOY FROM CASCADE TRADER

Cascade Trader lowboyed a shiny Doosan front end loader that was hitched to this clean blue Kenworth.

# WHIT-LOG Trailers

P.O. BOX 668 • WILBUR, OR 97494

**WE ARE NOW ON FACEBOOK!**  
Check out all the pictures and  
Like Our Page!

Find us on  
**Facebook**  
[www.facebook.com/Whitlogtrailers.com](http://www.facebook.com/Whitlogtrailers.com)



**Miller Timber Services Inc.,** PHILOMATH, OR, Brand New 2017 Whit-Log SLE100 Short Logger with Matching Truck Equipment. Custom Aluminum Cab Rack, Tipper Setup, and Much More... **Thanks Lee & John!!**



**Huffman Trucking LLC,** MYRTLE POINT, OR, Assembled 2017 Whit-Log SEWC100 Long Logger with Matching Truck Equipment. Custom Steel Cab Rack, and Much More... **Thanks Lenny!!**



**Shane Enterprises,** AMBOY, WA, Brand New 2017 Whit-Log SEWC100 Long Logger with Matching Truck Equipment. Custom Aluminum Cab Rack, Custom Deck Plate, and Much More... **Thanks Shane!!**



**Bridgewater Logging Inc.,** RAYMOND, WA, Brand New 2017 Whit-Log SEWC100 Long Logger with Matching Truck Equipment... **Thanks George & Josh!!**

**OFFICE: (541) 673-1166**  
EMAIL: [brett@whitlogtrailers.com](mailto:brett@whitlogtrailers.com)

**TOLL FREE 1-800-452-1234**  
[www.whitlogtrailers.com](http://www.whitlogtrailers.com)





## 2004 PETERBILT 378

Sierra Pacific brought their fully-loaded 2004 Peterbilt 378 to the Morton Loggers Jubilee Parade this year. This Peterbilt is piloted by Ryan Albert.

## LOGGERS WORLD VIDEO

Use your smart phone to download a QR Code app and scan this code to watch video of the Morton Logger's Jubilee parade.



Need a "Brake" on your Truck Insurance Rates?

**T.W. MORGAN INSURANCE SERVICES**

Since 1991 Insurance & Financial Services Brokerage Agency

"AN AGENT WHO UNDERSTANDS TRUCKING"

- Log Trucks • DOT Fuel Bonds
- Dump Trucks • Chip Trucks
- Tow Trucks • Sand & Gravel Trucks
- Truckers General Liability & Cargo Available
- Short & Long Haul Trucking • 50-500 miles to unlimited mile radius

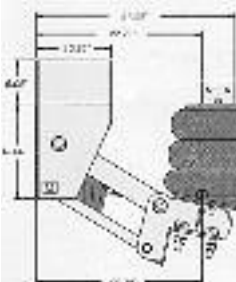
**90% of Our Quotes  
Save Our Callers \$\$\$  
WHAT ABOUT YOU?**

Ask for Tim • 503-245-3345 or 888-821-4717 • Tigard, Oregon  
Serving Oregon, Washington & California

**KNOX**

**DOUGLAS, INC.**

## NEW Silent Drive Ultra Flex Series UF-1013-1B



*In Stock Now !*

Pushers or Tag,  
Utilizes Steer  
Axle (Single  
Tire only)  
13,200 lbs  
Capacity

**With Rebuilt Axle or your Axle.  
Call for your Application**

Suspension and Air Parts in  
Stock and Available Now!

**PULLTARPS**  
ADVANCED TARPING TECHNOLOGIES MFG.

Authorized PULLTARPS Dealer.  
We carry parts and provide service  
for all your PULLTARPS needs

**SILENT  
DRIVE** INC.

Suspension  
Component  
Group

**Pederson**

**FOR LOGGING OR DUMP TRUCKS**



## FENDER KITS

Spindle Mounted for Self Steering  
Auxiliary Axles. Available with  
instructions to install it yourself  
or we can do it for you.

**WE SELL and  
INSTALL THEM!  
CALL US!**

We Accept



P.O. Box 5701  
Salem, OR 97304

503-363-0892  
fax 503-362-5435



**DARIN BAKER**

This new 2018 Kenworth B Model belongs to Darin Baker. You may remember him from the article we did on his operation back in 2015. Darin always has sharp looking trucks.

**MILLER TRUCK SALVAGE L.L.C.****DIESEL TRUCKS & PARTS**

15015 N. W. MILL RD. • PORTLAND, OR 97231

**"Specializing in '70's thru 90's"**

**(503) 283-1797**



1995 T800, N14, 10-spd Fuller, Rockwells on AG 100 **Parting Out**



1997 CH600, E-7, 10-spd Spicer, Spicer rears **Parting Out**

1981 W900A, BC3400, 13 spd Fuller **Parting Out**



2005 VNL Volvo, 18 spd Fuller, 46k Rockwell dbl lock **Parting Out**



1993 Volvo, low mile 3406C Cat, 13 spd Fuller, 402 Eatons, **Parting Out**



2005 KW T600, C15 Cat, Fuller trans, 404 on AG400 **Parting Out**



**ENGINES / TRANSMISSIONS**  
**Check With Us Before You Buy!**

**TRANSMISSIONS**

• RT 6613 .....	\$1,250
• RT 6610 .....	\$1,250
• RTO 15613 .....	\$2,000
• RTO 14715 .....	\$1,500
• RTO 14613 .....	\$1,500
• RTLO 16713A .....	\$2,600
• RTLO 18718B .....	\$2,750

**ENGINES**

• 3406B 425 h.p. Inspected.....	\$5,000
(Uninspected)	
• 8.3 Cummins, mech. \$3500 exchange	
• 5.9 Cummins, runs good .....	\$2,750
• Cummins BC 1-4 series .....	3000-4500 exchange
• E-7 300 W/Jakes, good runner .....	\$4000
• 675 285 hp., low miles .....	\$3500
• 3406E 5EK- 2WS. 4000-6000 exchange	
• DDEC4 450hp., runs good .....	\$5000

**EXCHANGE REQUIRED ON SOME EQUIPMENT - CALL FOR SPECIFIC UNITS**

# CABLE-LITE LOGGING WRAPPERS

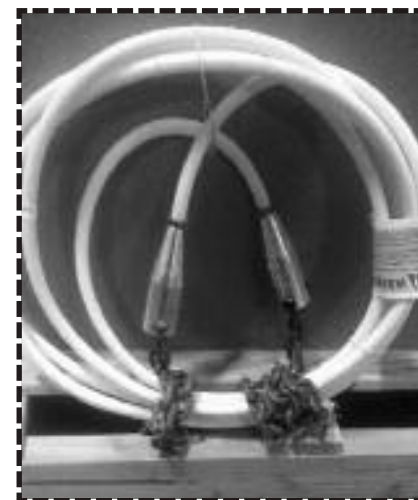
THE HIGH-TECH  
REPLACEMENT FOR  
WIRE ROPE WRAPPERS

## Reduce Shoulder Injuries

✓ 3 times lighter than equivalent strength wire rope

## Reduce Hand Injuries

✓ No "jaggers" to tear up your hands



Cable-Lite Logging Wrappers have been field tested and proven to provide a lightweight, ergonomic replacement to the standard wire rope wrappers. Cable-Lite Wrappers meet or exceed all Federal and State regulations and are labeled for easy inspection.

# HARBOR Saw & Supply inc.

3102 Simpson Ave. in Hoquiam!  
**800-786-6463 • (360) 532 4600**



## PARADE READY

This 2002  
Peterbilt  
with  
Peerless  
trailer is  
driven by  
Travis  
Dempsey.



# LOGGERS WORLD Suspenders are Back!!



*Show the world that you support  
LOGGERS WORLD MAGAZINE  
by wearing Loggers World Suspenders*

Loggers World Suspenders are now available in traditional red (2" wide) with black lettering. You can order them with leather ends or clips and we also have the buttons. Just use the handy form below.

**Only  
\$18.50**  
per pair

(Washington Residents pay  
\$20 including Sales Tax)

Plus \$7.50 shipping & handling



### PLEASE MARK YOUR PREFERENCE & SIZE...

☐ LEATHER ENDS

☐ METAL CLIPS

☐ 46"

☐ 46"

☐ 50"

☐ 50"

☐ 54" 54" Leather Ends  
Backordered for 6 weeks

☐ 54"

☐ BUTTONS for Leather Ends

**\$3.00**  
Pkg.

Send your check or Money order to:

LOGGERS WORLD LLC  
P. O. BOX 1631  
CHEHALIS, WA 98532  
Credit card sales call: 800-462-8283

Offer expires  
December 31, 2017

NAME: .....

ADDRESS: .....

CITY: ..... STATE: ..... ZIP: .....

PHONE: ( ) .....





### SHARP-LOOKING

Hollister Trucking of Ridgefield, WA had several nice trucks in the parade but this Kenworth with custom hood badges really catches the eye. Note that it says "Hollister" where you normally see "Kenworth."



## HEAVY DUTY TRANSAXLE

16891 146th St. SE Suite 103 Monroe, WA 98272

360-794-2021 Toll Free: 888-383-3301

Hours: 8:30am to 4:30pm

hdtransaxle@usa.net

www.hdtransaxle.com

**Exchange Units in Stock**  
**Differentials in Stock**  
AxleTech, Clark, Eaton,  
Fuller, Meritor, Spicer

**Full line of Planetary**  
**Service Parts**  
AxleTech, Clark, Rockwell, Shuler  
Fits: Washington/ Skagit/  
Thunderbird/Madill Yarder Axles  
& More



**Local Full Service Gear Shop**  
Custom Gearwork  
Time & Materials



Late Style 20 inch Clark HUB Fit:  
BD 50/70 BD 56/60 BD 45/60



New & Rebuilt Clark Planetary  
Assemblies in Stock

### Specials of the Month

#### Glider Package

New RTLO18918B w/ Meritor 50160  
Ratio 4.56, Double Lockers on  
Neway air  
Tandem is complete,  
except for Interaxle Driveline

**Special Pricing \$16,500**  
only for separate pricing



#### Dana / Spicer Rear Axles

D70-590P, Rear Axles  
Ratio 6.34, 70,000 lbs. 75in Track  
On-demand lock up, front and rear  
budd wheel hub piloted, outboard  
drums, interaxle driveline, 56in axle  
spacing.

\*solid suspension priced on request\*

**Special Pricing \$14,500**



**AxleTech**  
International

#### New Core-Free Assemblies

RR20145

RRL20145

RD20145TL

In stock • Ready to Ship!

Authorized Distributor for AxleTech International

### Units In Stock!

New & Rebuild

20145 Rear Rear  
20145 Rear Lockers  
20145 Front Lockers  
23160 Front Lockers  
23160 Rear Lockers

Ratio's available: 4.10, 4.30,  
4.56, 4.89

DS461 RS461  
DD461 RD461  
DC461 RC461

RTLO20918B RTLO18918B  
RTLO18718B RTLO16713A  
RTO14613P RTO14613  
RTLO16915 RTLO15715  
RTLO14715 RTLO14709  
RTLO16908MLL

#### SPICER/DANA

1241C / D - REBUILD EXCHANGE  
AMO 1004-C / D  
AT1202 AirShut / Mechanical

**Call us for current stock!**





## KENWORTH T800 4-AXLE CHASSIS



**3 Trucks**  
To Choose From  
*YOUR CHOICE*  
**\$55,000**

Cummins ISX Engines, 18-speed trans. (RTLO18918B), Single speed Eaton rear-ends 4:10 or 4:11 gears w/locker, **Hendrickson Haul-max walking beam susp.**

#10 R087304 2005, D46-170HP rears, 252" WB, 475hp...**\$55,000**

#99 R054031 2004, DSP-463P rears, 250"WB, 475hp ....**\$55,000**

#51 R892651 2002, DSP-463P rears, 251"WB, 475hp ....**\$55,000**

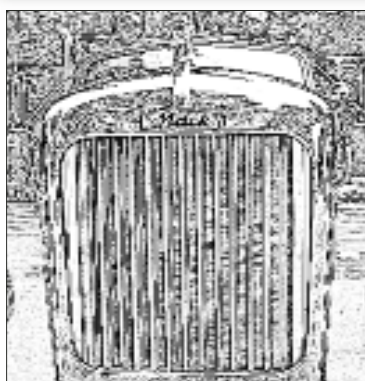
**CLEAN AND IN EXCELLENT SHAPE!**  
Maintenance Records - Regular Oil Samples  
For More Info: [www.irelandtrucking.com](http://www.irelandtrucking.com)

Thomas H.  
**IRELAND**  
INCORPORATED

Call Charles Ireland  
**541-863-1501**  
Myrtle Creek, OR

## 2018 PETERBILT

This 2018 Peterbilt with a Lincoln trailer is driven by Ron Parsons of Parsons and Son Trucking, in Olympia, WA



### WE OFFER:

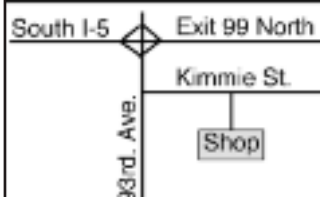
- General Truck Repair
- Complete Diesel Engine Service  
Cat - Cummins - Detroit
- Hendrickson Rebush Center

Incl. Hendrickson 380 Series Equalizer Beams

We Rebush Log Trailers

CHALMERS & 8-BAG  
KENWORTH SUSPENSION  
REBUSHES

### • Stop By Our Shop •



## COMPLETE LOWER REBUSH

**\$1575**

Bar Pins Extra

Usually in 3 Hours or less  
Call For Appointment



## SCHELLER DIESEL SERVICE

9144 Kimmie Street - Olympia, WA. 98502 • (360) 943-9818





### 1971 KENWORTH C500

This 1971 Kenworth C500 Lowboy hauling a Doosan DX140C Excavator is owned by Ernie Cook and driven by Michael Gay.

## TRUCK PARTS *Sales* INC.

269 Hamilton Rd. N.  
Chehalis, WA 98532  
360-748-0086

**One Stop Shop For All Your Heavy Duty Needs**

**WE NOW STOCK CB RADIOS AND ACCESSORIES**



Uniden  
PRO510XL

CB Radio  
With mic

\$43.33 each



CB Microphone

Uniden Branded 4  
pin mic  
(fits most 4pin)  
PN BC645

\$13.20 each



**CB Antenna  
Magnet Kit**

2' Whip CB  
antenna

\$22.53 each

### Log Trailer Reach Caddies



- UHMW clamps won't break!
- Remove and replace while loaded!
- No more stuck clamps due to corrosion!

PRO4-40 or PRO4-48

Only \$19.99 each



## Subscribe Today! *LOG TRUCKER*

*The magazine about the  
forest products  
transportation industry*

12 Issues – 1 Year Subscription

# \$25<sup>00</sup>

WA Residents pay \$27.40 w/tax  
Inside U.S.A.

**Offer expires  
December 31, 2017**

LOG TRUCKER

**Send your check or Money order to:**  
**LOGGERS WORLD LLC**  
P. O. Box 1631  
CHEHALIS, WA 98532

○ \$25.00 for 1-Year Subscription    ○ \$50.00 for 2-Year Subscription  
**WASHINGTON RESIDENTS PAY \$27.40 & \$54.80 w/SALES TAX**

NAME:.....

ADDRESS:.....

CITY:..... STATE:..... ZIP:.....

PHONE: (       ).....

(ALLOW 5 WEEKS FOR DELIVERY OF FIRST ISSUE)

*Must mention this ad - Prices good through October 31st*



# LOG TRUCKER

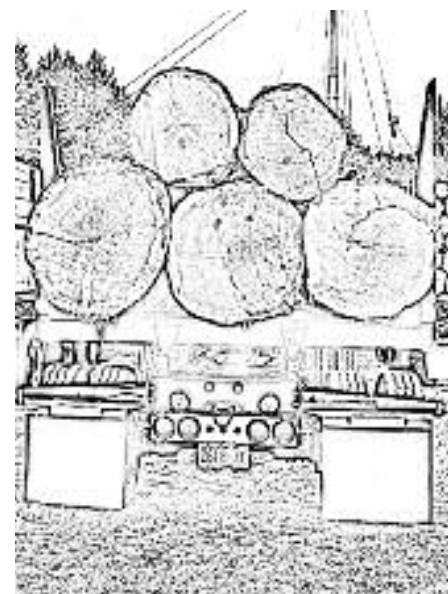
## OCTOBER 2017

### ADVERTISERS INDEX

Advanced Hydraulic and Ind.  
Supply .....6  
Alpine Industrial LLC .....11  
Betts Truck Parts and  
Service .....5  
Gannon Equipment Inc. ....  
General Trailer .....3  
H.D. Transaxle Inc. ....17

Harbor Saw & Supply .....15  
Ireland, Inc. ....18  
Knox-Douglas, Inc. ....14  
L&M Truck Sales, Inc. ....12  
Lincoln Industrial Supply .....7  
LKQ K.C. Truck Parts .....20  
LKQ Wholesale Truck Parts .9  
Loadman .....10

Log Trucker Subscription...17  
Miller Truck Salvage LLC....15  
Scheller Diesel Service .....18  
Schott Parts & Accessories .6  
St. Johns Truck &  
Equipment .....8  
The Gear Box Inc. ....4  
Tim Morgan Insurance .....14  
Truck Parts Sales, Inc. ....19  
Washington Contract  
Loggers Assoc. ....12  
Whit-Log, Inc. ....13



#### FILTERS

Air • Fuel • Water • Oil • Hydraulic

Gates Hoses & Fittings  
Lincoln Lubrication Equip.

Open Monday - Friday 7:30 am - 5:30 pm

Saturdays 8 am - 1 pm

Williams Oil Filter Service Co.

**WOFSCO, INC.**

1247 Puyallup Ave., Tacoma, WA 98421

(253) 627-8163

Toll Free: **1-800-522-1250**

#### FOR SALE



**1995 Peerless Log  
Trailer**, 8.5' Hassell bunks, 2 stage  
reach, new brakes, ..... **\$12,000**  
**541-450-2904**  
leave message



*What can we  
**BUILD**  
for you?*

**888-222-5201**



**(800) 622-5170 • (360) 736-3344**

## KC TRUCK PARTS

**183 STATE HWY. 508, NAPA VINE, WA.**  
**www.LKQheavytruck.com**



**2011 PETE 389, ISX 550, RTLO18918B, Air  
Ride ..... PARTING OUT**



**2011 KW T700, ISX15 550, 13 speed,  
40K rears ..... PARTING OUT**



**1999 KW T800, C-12 Cat, 13 speed, 8 bag  
/ 40K rears ..... PARTING OUT**



**1998 IH 9100 Fuel Tanker, Cat C-12, 9  
speed O/D, 40K tandem, 4 compartment  
3700 gal. w2 reels .....  
..... SELLING COMPLETE**



**2000 FREIGHTLINER Argosy, 60 series  
430/470 DDC IV, RTLC16609C, 40K rears .  
..... PARTING OUT**



**IH 4900 Dump Truck, DT466 (only 39K miles on  
truck), 10 spd, 40K rears / Spring/Beam, 16 ft.  
rock box.. EASY FIXER/SELLING COMPLETE**