

LOGGERS WORLD

VOLUME 52 NUMBER 11

To Advertise Call: (800) 462-8283

NOVEMBER 2017

Pine Creek

LOGGING LLC

DEARY, IDAHO

waratah



108th ANNUAL CONVENTION
PACIFIC LOGGING CONGRESS
THE SCOTTSDALE PLAZA RESORT
SCOTTSDALE, AZ

**Nov.
6-8**

Happy Veterans Day!

**Thank-You Veterans
for Your Service to our Country**

PRSRPT STD
U.S. POSTAGE
PAID
PERMIT NO. 178
SALEM, OR

LOGGERS WORLD LLC
P. O. BOX 1631
CHEHALIS, WA 98532-8425

Finley's Rigging Shack

"Classic"



**Originally Printed in
April 1980**

"THE ONLY THING CONSTANT ABOUT MY LIFE IS CHANGE!," that is what Stan Mishler said to me one time. After I had thought it over found that wise utterance also fit my life and work. The only thing that is constant is change. Nothing in this life is exactly like it was a moment before.

Yet someone once also said that no matter how much things changed they tended to stay the same.

My hobby, or one of my hobbies, for many years has been studying organizations and observing what happens to them after they are formed and growing and going. All organizations change and yet they keep the same form and purposes.

Loggers World Publications Incorporated is an organization.

Our original Editorial Policy hinged on the feeling that we wanted to report upon logging operations as they actually were. To accentuate the Positive, to report on loggers with words and pictures. Fifteen plus years ago this was a pioneering attitude and the fact that it had

some value is that it is often copied today.

We started taking pictures of loggers in the woods busy at their jobs. To picture loggers as they were, unposed and on the job. That worked well then and is working well now.

My original idea was that the true hero of family, community and country is the man, or woman, who does the work. Who gets up every morning and goes to the job --- and does it. Day after day until he or she has done this year after year. Now to me that is heroic. To take on responsibilities and to carry out those responsibilities takes character and persistence. Loggers do that so much that most people don't think it is newsworthy. I think it is!

If you read and listen and watch the news you notice that most of it is taken up with the people who do not keep their word; who do not measure up to their promises; who falter and are prey to weakness and poor value structure.

If we stand for anything that is what we stand for; the man who gives his word and keeps it is the man we want to know and to report upon.

That attitude of reporting is unusual, to push the positive accomplishments and not to push the troubles, problems and hatred. There are enough publishers and writers who take the other extreme.

I've been around logging men all of my life --- and intend to be around them the rest of my life. I know them. I like them.

So my work has been a source of amusement and amazement. How can a guy make a living doing what he likes to do more than anything else? I can't answer the question but I surely enjoy the fact that I live the answer.

Some things are constant in our organization and some things tend to change. One area of change is in the people that work for and with us. In the main the original people are still here. But there have been a lot of good people who have worked for us and have left us to go on to better things.

MYRON METCALF:

Myron Metcalf first came to our office when he was a Junior at Washington State University. That summer he worked with us during vacation. After he had graduated from College he was an officer in the U.S. Army for four years. After getting rid of the Uniform he was a forester for a year, or more or less, and spent his time cruising timber and doing those things a forester for a big company does.

I believe that it was at the



FINLEY HAYS

first of the year in 1975 that Myron came to work for Loggers World. An intelligent young man he mastered the chores around here as quick as could be expected. He did excellent work and lots of it for these years.

Late last year he decided that he was going into business for himself. One thing he was going to do was to be a Consultant in Timber Management --- and that is one thing he is doing.

He and I discussed this move in 1979 and the plan of separation was put into effect. The month of March in 1980 is the last part of a month that Myron will be full time with Loggers World.

During the coming months we hope he will be available to do some writing and photographing for our publications.

Of course we here at Loggers World wish he and his family much success at his new work and we expect him to do well, to do very well.

In the meantime we made some interior changes to fill the hold left by Myron. Jerry Capps is the new Editor of Loggers World and he is doing well at his new job.

As we are saddened by the fact that Myron is leaving us we are gladdened by the fact that Jerry is joining us.

(Continued on Page 21)
See "Rigging Shack"

IN THIS ISSUE



ON THE FRONT: Pine Creek Logging LLC owner Steve Henderson and nephew Jeff Henderson stand in front of the Waratah HTH623C with GEM bar (mounted on a JD 2545D) that Jeff operates.

See "Logging with Legacy" starting on Page 4

2. RIGGING SHACK

"Classic" From April 1980 by Finley Hays

4. LOGGING WITH LEGACY

PINE CREEK LOGGING - DEARY, IDAHO.

by Brandon Hansen

22. AS WE SEE IT

23. SUMMARY JUDGEMENT

SECRETARY ZINKE'S DISAPPOINTMENT IN MONTANA

by William Perry Pendley

26. IRON MART

28. SHOW AND SELL

LOGGERS WORLD

Published by LOGGERS WORLD LLC

Founded in 1964 by Finley Hays

Phone (360) 262-3376



Member and Supporter of the
American Loggers Council Since 1994



PUBLISHERS.....Kevin & Nancy Core
EDITORS EMERITI.....Finley Hays, Mike Crouse
EDITOR/WRITER.....Brandon Hansen
ADVERTISING.....Kevin Core
OFFICE MANAGER.....Nancy Core

POSTMASTER: Send address changes to:

LOGGERS WORLD LLC,
P. O. Box 1631, Chehalis, WA 98532-8425

E-Mail: logworld@aol.com

SUBSCRIPTION RATE (In U.S.A.):
\$25.00 per year; Two years for \$50.00

LOGGERS WORLD LLC cannot and does not assume responsibility for the contents of any advertising in Loggers World. The representations made by advertising is the responsibility of the advertiser and not Loggers World. Loggers World does not knowingly accept advertising that is false or misleading. The limit of Loggers World liability in case of a mistake made in advertising copy by Loggers World will be the charge of the actual space containing the error or less for that particular advertisement.

THE NEW FL95 STEEP-SLOPE SPECIALIST

Intimidate any steep slope with this specialist – the new Waratah FL95. Boasting an extreme downslope tilt angle, auto tension saw, extra-large cutting and grapple capacities, and weight in the right place for maximum carrier stability, it will help you get more work done faster. Plus, its optional retractable saw box is just where you need it when felling, or out of the way when shovel logging. With the FL95, you'll see challenging work dominated from a new angle.

www.Waratah.com

Waratah Kelso, Washington
+1 (360) 636-2950

Waratah Atlanta, Georgia
+1 (770) 692-0380

 **waratah**
BUILT TO WORK

Logging with Legacy



MAKING TRACKS

LEFT: Brent Roby bringing up another turn with a Cat 527

RIGHT: Pine Creek's Skagit GT3 Yarder working on one of their very small landings. They were using an Eaglet Carriage and were about 1,200 feet out.



Deary's Steve Henderson keeps six sides operating with Pine Creek Logging

Photos by Kevin Core
Story by Brandon Hansen
For Loggers World

When Steve Henderson first began logging, the work was done by hand with chainsaws and there was no such thing as processors. Now as owner of Pine Creek Logging, Henderson oversees six sides in Deary, Idaho working for Potlatch and Bennett Lumber. He's seen quite a few changes and continues to adjust in the ever-evolving timber industry.

"I was born right here in Deary and there is no better place in the country," Henderson said. "I love being here."

Deary is a town of just over 500 people in Latah County and sits near the great rolling hills of the Palouse where agriculture reigns but also close to the great timberlands of Northern Idaho.

Pine Creek Logging currently has 45 employees and scores of machines. Henderson's company includes three high-lead sides, one road-building side and two fellerbuncher sides. For Henderson, he keeps the timber in front of his guys along with the time-honored logging boss job of doing anything that needs to be done.

Henderson is a third generation logger as his grandpa was a logging camp boss and his dad worked for many years for the Potlatch Corporation. Henderson spent time at a logging camp and, after a year stint in college, began hooking in 1978.

In 1983, his then father-in-law Roy Lawson took him on as a partner of Lawson Logging and he began running loader. At the time, Lawson Logging



Steve and Diana Henderson are the busy owners of Pine Creek Logging, LLC. We were lucky enough to catch them in the same place at the same time.

(Continued on Page 7)
See "Pine Creek"

DOOSAN**Authorized Dealer**

Sales, Parts & Service
Your #1 Established Forestry Equipment Dealer

**Cascade Trader has a
Complete Line of new
Doosan Log Loaders, Excavators
& Wheel Loaders for your
Logging & Construction Needs!**

Cascade TRADER inc.
EQUIPMENT SALES - LOGGING & CONSTRUCTION



**Ask
About Our
Special Financing:
Up to 60 Months**

All offers
subject to credit approval



THUNDERBIRD Yarder TTY-70,
Track Mt, Excellent\$410,000



Doosan DX300LL-5 Log Loader,
NEW IN STOCK



Tigercat 880 Log Loader, Single
Bar Grousers, low hours.....P.O.R.



Doosan DL420-5 Wheel Loader,
NEW IN STOCK



DOOSAN DX85R Excavator
New Inventory



Doosan DL350-5 Wheel Loader,
4.5 yd, low hoursPOR



DX300LC-5 Excavator
NEW INVENTORY

LOG LOADERS

CAT 235C Log Loader, Pierce Boom	\$17,500
CAT 325LL recent rebuilt engine	\$37,500
CAT 330 Log Loader	\$37,500
CAT 330B Log Loader	\$49,500
DOOSAN DX225LL Log Loader	POR
DOOSAN DX225LL Log Loader	\$172,500
DOOSAN DX300LL-5 Log Loader	\$249,500
DOOSAN DX300LL-3 Log Loader, 6200 hrs	POR
DOOSAN DX300LL-5 Log Loader, low hrs	\$249,500
HYUNDAI 3220 Log Loader, 7500 hrs	\$169,500
HYUNDAI 3220 Log Loader, 2013, low hrs	\$235,000
JOHN DEERE 200LC Log Loader, Forestry Cab	\$59,500
JOHN DEERE 2154LL, 2011, 9000 hrs	\$139,500
JOHN DEERE 2554LL	\$125,000
JOHN DEERE 3554 Log Loader	\$85,000
KOBELCO SK200LC Log Loader	\$32,000
KOBELCO SK210LC Log Loader	\$64,500
KOBELCO SK290LC Log Loader	\$35,000
KOBELCO 295LL (2009) Log Loader	\$165,000
KOMATSU PC300HD Log Loader	\$37,500
LINKBELT 2800Q Log Loader	\$34,500
THUNDERBIRD 1238 Log Loader	\$39,500
TIGERCAT 880LL Log Ldr, Sgl bar grousers	POR
FELLER BUNCHERS, PROCESSORS	
CAT 330BLL Log Loader/KETO 800	\$39,500
HAHN Harvester, HTH300, 3-Axle SP	\$19,500
KOMATSU PC128/LogMax sm. Wood Harvester	\$39,500
KOMATSU PC220LC/Pierce 3348 Stroker	\$119,500
KOMATSU 450XT FB, Quadco 24" Disc	\$275,000
LINKBELT 290LX Logger/Waratah 623C	POR
MADILL 2800 / DENHARCO DM3500 Stroker	\$45,000
TIGERCAT LX830C FB, 5702 Disc Saw	\$129,500
TIGERCAT L870C, 5702 360 tilt, reduced	\$110,000
TIMBERJACK 2628, Bar Saw	\$29,500
TIMBERJACK 608L, Koehring 20" Disc Saw	\$45,000
TIMBCO T-445E, Quadco 22", reduced	\$85,000
WARATAH HTH-623C, NEW Inventory	POR
TOWERS & YARDERS	
CHRISTY Yarder, Truck mount	\$49,500
HITACHI EX200/Dual Drum "Escaliner" Yarder	POR
KOBELCO SK300LL "Yoder", Dual Pullmasters	\$129,500
KOLLER K501 Yarder, Trlr Mnt, Price reduced	\$44,500
MADILL 071, 3-Guys, 8V71GM, recent work	\$85,000
MADILL 071, 4-Guys, 8V71, w/Rigging	\$107,500
MADILL 071, 4-Guys, 8V71T, fresh paint, nice	\$110,000
MADILL 071, CAT 330 Track Undercarriage, nice	POR

PSY-200, Self-Propelled, nice yarder	\$199,500
SKAGIT BU-80C, T-90 Trailer Mount	\$32,500
SKAGIT BU-84 Slackline, T-100HD, Trlr Mt	\$149,500
SKAGIT GT3 Swing Yarder, Track Mnt	\$89,500
THUNDERBIRD 6140 Swing Yarder, nice	POR
THUNDERBIRD TTY70 Track Mnt, reduced	\$410,000
WASHINGTON 78-40 Swing Yarder	\$42,500
WASHINGTON 127W, T90, Trailer Mnt	\$29,500
WASHINGTON 137W Slackline, T90, reduced	\$139,500
WASHINGTON TL6 Trakloader, SP, 50' Boom	\$35,000

**EXCAVATORS/DOZERS/GRADERS
WHEEL LOADERS/SKIDDER**

CASE CX160B, Pin Grabber, Thumb, Buckets	\$59,500
CAT D7E, Winch, Straight Blade	\$24,500
CAT D6C, Straight blade w/Tilt, winch, arch	\$25,000
CAT 14E Grader	\$14,500
CAT EL240B Excavator	\$19,500
CAT 525B, Swing Grapple, nice machine	\$85,000
DOOSAN DX225LL "Road Builder", low hrs	POR
DOOSAN DL350-5 Wheel Ldr, 4.5yd, low hrs	POR
DOOSAN DL400 Wheel Loader	POR
FIAT-ALLIS 8, Winch/Arch, recent work	\$19,500
GARRETT 25 Skidder, Cummins	\$12,500
JOHN DEERE 160D Excavator, Bkt, Thumb	\$84,500
JOHN DEERE 200D Excavator	\$45,000
JOHN DEERE 2454 "Rd Bldr", Excav, low hrs	\$250,000
JOHN DEERE 350c Dozer, Canopy, Winch	\$11,500
KOMATSU PC220LC-7, Bucket/Thumb	\$55,000
KOMATSU WA470-6, GP Bkt, Scales	POR
KOMATSU WA500-7, GP Bucket	POR
LINKBELT 3900Q Excavator, Bucket/Thumb	\$27,500
MADILL RB500 (180 size) Excav, guards	\$45,000
MOUNTAIN Logger ML150, GM, Clark Winch	\$16,500
MOUNTAIN Logger ML150, Cummins	\$12,000
TIMBERJACK 480b Grapple Skidder	\$29,500

CARRIAGES & MISC

ACME 15 Slackpulling Carriage, recent work	\$24,500
BOWMAN Mark V, recent work	\$35,000
CEC Portable Jaw Crusher, Trailer Mnt	\$85,000
DANZCO PT20 Pull Thru Delimber	\$10,500
DIAMOND Z 1460 Tub Grinder, 2010, excel	\$289,500
GENERAL 60T Lowboy '08, 9' wide, 24' deck	POR
LOAD KING 60T Lowboy, 9' wide, 24' deck	\$49,500
MORBARK 30RXL Chiparvestor, Cat 3412	\$110,000
PETERSON 5900EL Disc Chpr, 765HP, low hr	\$265,000
TRAILMAX Tilt Trailer, 27T, 3 axle	\$18,500



DOOSAN Log Loaders
LOTS OF INVENTORY!



Doosan DX225LL-5 "Road
Builder"P.O.R.



WASHINGTON 137W Slackline
Yarder, excellent!.....\$139,500

KETO • WARATAH • SOUTHSTAR • EAGLE CARRIAGE

Rich Lennox (360) 508-0192
John Welch (360) 520-2082
Shannon Pesicka (360) 507-0542

Mike Duch (360) 880-6955
Jim Wark (360) 623-5219
Cooper Brunoff (360) 880-7534

John Griffin (425) 210-9702
Tony Foglio (360) 520-7084

Bill Pantier • Doosan Parts: (360) 508-6294 Cell
Traci Brunoff • Sales Coordinator: (360) 880-7531

www.cascadetrader.net

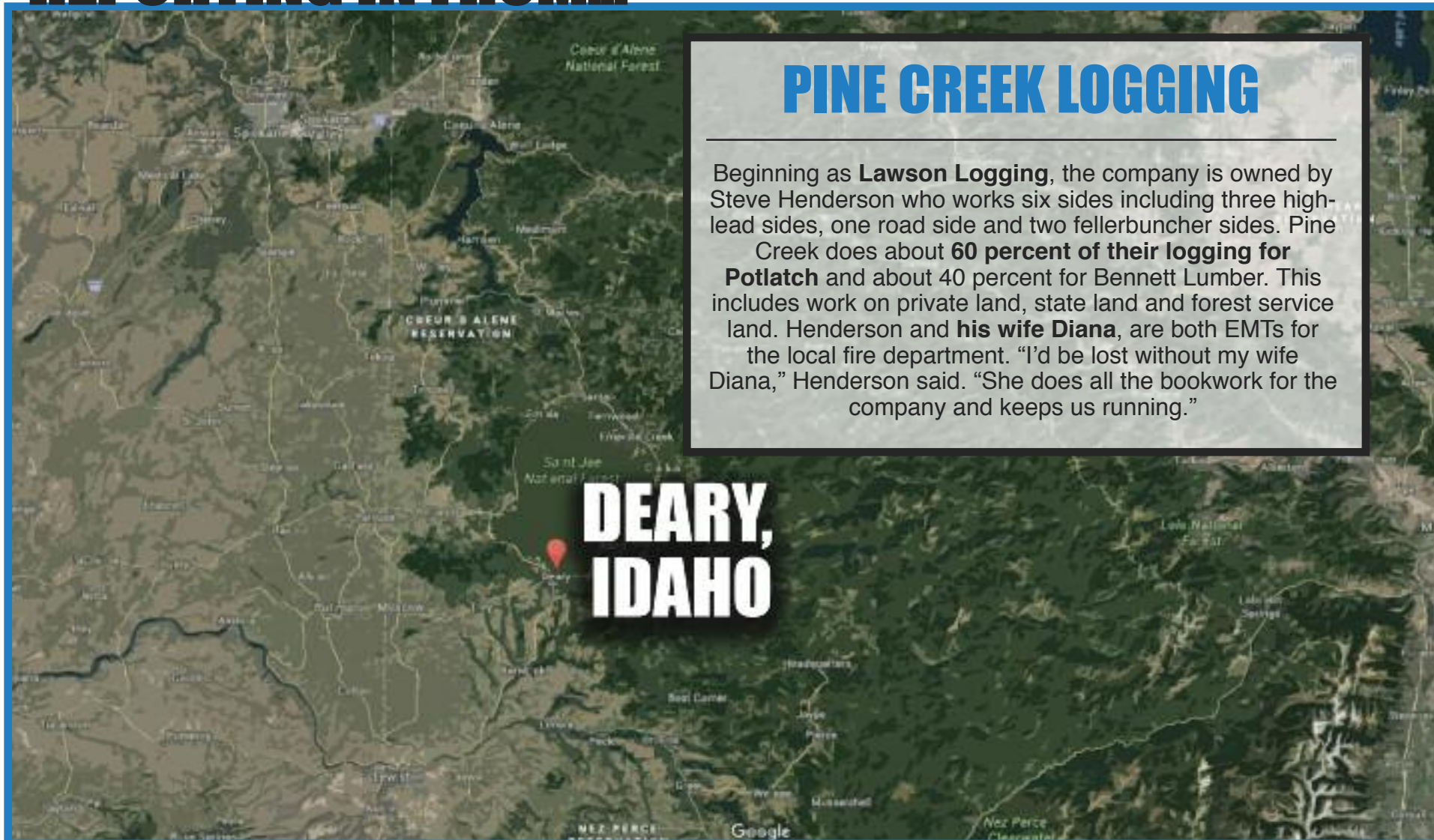


Find us on
Facebook

(360) 748-1182

fax (360) 748-1198 •
Located at Exit 79 off I-5
1380 NW State Ave., Chehalis, WA 98532

REPORTING IN FROM...



PINE CREEK LOGGING

Beginning as **Lawson Logging**, the company is owned by Steve Henderson who works six sides including three high-lead sides, one road side and two fellerbuncher sides. Pine

Creek does about **60 percent of their logging for Potlatch** and about 40 percent for Bennett Lumber. This includes work on private land, state land and forest service land. Henderson and **his wife Diana**, are both EMTs for the local fire department. "I'd be lost without my wife Diana," Henderson said. "She does all the bookwork for the company and keeps us running."

DEARY, IDAHO

DEARY, IDAHO

Deary is a town of **over 500 people** in **Latah County, Idaho**. The town is near the Palouse and near the timberlands of Northern Idaho. The settlement was first a waystation on the road called "**Spud Hill**." The settlement was renamed "Deary" when the railroad came to town and it was officially founded in 1907. That was when the post office became operation and the town was named after **William Deary**, a business person in the lumber industry.

KEY
Est. 1908

Work Wear



Hickory Shirt **\$24.95**

- Heavy-duty cotton fabric
- Zipper or button front
- Long tails

Sale includes sizes S to XL.
Big and Tall are \$3. extra

Logger's Jeans

\$22.95



- Heavy-duty cotton denim
- Full cut
- Riveted suspender buttons
- Side tool pocket
- Large back pockets
- Double-stitched
- Zipper fly

Sale price is for sizes 30" to 42"
Big sizes 44" to 52" are \$3. extra

Also available in Double-Front style for \$4. extra in sizes 30" to 42"

MADSEN'S
SHOP & SUPPLY INC.
Centralia, Washington

☎ 360-736-1336
Information Calls

☎ 800-822-2808
Direct Order Line

www.madsens1.com



Need Financing? We Can Help!

We Finance Loaders, Trucks, Skidders, Trailers, etc.

- Working capital available
- Start-up program for under 2 years available
- 1st payment only
- 3,4,5 year financing
- 150K application only
- Finance any equipment or attachment...no age requirement
- Personal one on one financing process
- 27 years' experience in the financing industry

Isn't it time you made an investment in your machinery?

Call Doug Powell Today!

888-223-2600 • dee@fullcircellc.us

After hours cell: 509-393-5111

11 Spokane Street - Suite 306, Wenatchee, WA 98801 • www.fullcircellc.us



CC HEAVY EQUIPMENT



2010 LinkBelt 210 with Waratah 622B Processor. Less than 10k hours on this "Landing Queen". Very Clean!, New Seat Just Installed. U/C 60%+\$165,000 FOB Rickreall, OR.



2010 Kobelco 295 LC Mark 8 Log Loader with Jewell Package. 11,183 Hrs. 2 Owner Machine with Very Good Maintenance. U/C 70%+, Upgraded Seat. Ready to work!.....\$89,000



1999 Kobelco 300 Yoder, Cummins Engine, 2 Pullmaster Dash 4 Winches, Jewell Grapple, ACME 10 Skycar, Radios, 6 Electric Chokers **NEW PRICE! \$160,000**



Thunderbird TSY-255, 5,467 Hrs., 3 Guylines, U/C 75%+, Detroit Power, Hours 5467 (4 Place Meter), Job Ready! **\$550,000**



2015 Hitachi 370 Log Loader, Pierce 60" Grapple, 4,000 Hrs., Tier III Engine, Rear Entry Cab, Nice Machine!.....\$309,000



2004 John Deere Logger 2554 with Pierce Grapple, 18,974 Hrs., 70% U/C. New Rotek Bearing and Hydraulic Swivel.....\$79,000



2006 Link-Belt 330 LX Processor, With a 2006 Waratah 624 Super, 19,293 Hrs., Boom Tip, Good Knives, Forestry Cab, LogRite Computer, U/C 70%+, Tight Machine. Job Ready!.....\$105,000

1988 Thunderbird TSY 50 Grapple Yarder, Factory Long Block Rebuilt 8V71T Detroit Engine, 3 Guylines, Many Recent Repairs, includes tail-spur & rigging trailer **\$525,000**



2002 Case CX 330 Excavator, 9,687 Hrs., Geith Bucket Shop Built Hydraulic Thumb, U/C 80%+, Triple Bar Grousers, 78K Weight, Nice, Tight Machine!...**NEW PRICE! \$67,500**



1995 Thunderbird TTY 70 Yarder, CAT 3406 Engine, 550HP, Twin Disc Transmission 5+1, Lohmann Finals, Short Frame, Air Clutches, Last One Built Before 6170 Series, 5 Guylines. Completely Refurbished. New paint. Trades considered\$825,000



2008 John Deere 2554 Log Loader. 16,300 Hrs., Recently replaced Rotek, Travel Motors and Swing Motor, U/C 70%+ . Jewell Grapple, Currently Working.\$115,000

1997 Madill 172 Yarder, With Fresh Rebuild, New Series 60 Detroit Engine, Updated Interior, Freshly Painted, Very Low Hours on Tower, Fresh U/C,....\$825,000 or With New Lines\$865,000



TAJFUN WE SELL TAJFUN (TYPHOON) FIREWOOD PROCESSORS



1984 CAT D6D Dozer, One of the last D's Manufactured, Weldco Beales C Frame and 6 Way Dozer Blade, Hyster Winch with Fairlead, U/C 80-90%, New Seat and Paint Job, Ready To Work!\$69,000



2014 Doosan 300 Tier III Log Loader, Jewell Grapple, 6,900 Hrs. **NEW PRICE \$167,500**



2012 Link-Belt 290 X2 Log Loader, Less Than 11,000 Hrs., New U/C With 1,200 Hrs.....\$195,000



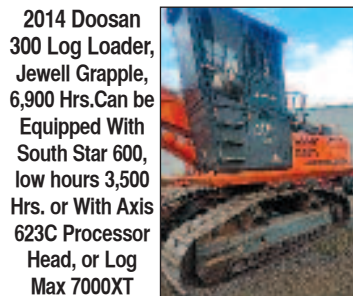
1989 CAT D6H High Track Logging CAT, Semi U Blade, CAT Winch with Arch, CAT 3306 Engine, Fresh U/C and Paint, New Seat, Extremely Nice CAT!\$79,000



1997 CAT D5M LGP Crawler Dozer, 6 Way Dozer, Rear Hitch and PTO Installed, U/C 65%+, Sprockets at 90%, Recent Transmission Work Done by Peterson Cat, Nice Running CAT!.....\$46,500



2017 Tajfun Firewood Processor, 3 Power Options-Tractor PTO, Skidsteer Hydraulic, Koller Gas Engine, Mobile Platform, Call for Catalog Starting at \$35,000



2014 Doosan 300 Log Loader, Jewell Grapple, 6,900 Hrs. Can be Equipped With South Star 600, low hours 3,500 Hrs. or With Axis 623C Processor Head, or Log Max 7000XT (Processor Head options subject to availability) ...Mounted and Out the Door **NEW PRICE \$327,500**



2001 John Deere 450H Dozer, 6 Way Blade, Hydrostatic Controls, U/C 70%+, Very Nice Tractor!.....\$32,000

CCHEAVYEQUIPMENT.COM

Dallas/Salem Rickreall, OR

Carl Cornthwaite • 503-507-7230 • carl@ccheavyequipment.com
Lincoln Cornthwaite • 971-901-1333 • lincoln@ccheavyequipment.com

Pine Creek

(Continued from Page 4)

had two cat sides and Henderson would go on to fall timber, run skidder and whatever else needed to be done.

Eventually he moved into a foreman position and did a lot of grader work.

"Roy always told me that you can't tell people to do something as a boss unless you've done it yourself," Henderson said.

John Henderson, Steve's brother, came into the company around 1994 and began working on the road side and Henderson's late father Wesley also came in and ran cat and skidder. The company moved into cut-to-length and at one point had five sets of CTL machines. While working for Potlatch, the demand for high-lead work grew and they added a Timbco with a 1,000-foot line in 2001 to run with the CTL machines.

Lawson passed away from a heart attack in 2007 and Henderson took over the company and rebranded it as Pine Creek Logging.

(Continued on Page 8)
See "Pine Creek"

PACIFIC FIBRE PRODUCTS
WANTED
Alder, Maple, Douglas Fir, Cedar
Hemlock, Cottonwood
PULP LOGS
Land & Timber or Timber Only
Paul Hadaller • 360-431-9661
Rob Vance • 360-355-2817
P.O. Box 278, 20 Fibre Way, Longview, WA.
Office: 360-577-7112
WE ARE NOW PURCHASING LOGS IN MOLALLA, OREGON!

**Oliver-Hammer
Clothes Shop**
**Clothing the
Working Man for
96 Years**

Wesco Caulk Boots, Redwing, Carolina, Carhartt, North Star
Gloves, Hickory Shirts,
Logger "Riggin" Jeans and a
Whole Lot More

(360) 855-0395
821 Metcalf,
Sedro Woolley, WA 98284

(Continued from Page 7)

Having learned a lot from Lawson, he continued the company and grew it through the years as well.

With the production they were putting out, the company needed more trucks.

"We always had one truck but got into more trucks with the CTL machines because we needed to move that timber and couldn't get enough independent trucks so we had to get some of our own," Henderson said.

In 2008, Pine Creek Logging bought three trucks and now has seven trucks. Along with independent drivers, the company now utilizes about 14 log trucks.

In terms of work, Pine Creek does about 60 percent of their log-

(Continued on Page 10)

See "Pine Creek"

**ESCOLINE CREW**

The crew of the John Deere escoline side for Pine Creek Logging are: (L-R) Hooker Dylan Wilson, chaser/hooker Carl Spray and Monte Anderson who operates the John Deere 330L LC escoline.

WRECKING LOGGING EQUIPMENT

EXCAVATORS • CRAWLER TRACTORS • ROCK TRUCKS • LOADERS • GRADERS

Parting Out

2004 Cat TK732

Parting Out

2005 Link-Belt 370LX

Parting Out

2006 Deere 844J

Parting Out

2001 Deere 330LL

Parting Out

2005 Komatsu PC220LC7

Parting Out

2005 Link-Belt 350LX

Parting Out

2005 Cat 322CLL

Parting Out

2004 Deere 953G

Parting Out

2007 Hitachi ZX350LC3

Parting Out

2000 Cat IT62G

FRALEY TRACTOR, Inc. WRECKING DIV.

(509) 884-7117 • FAX (509) 884-3959 • fti2@nwi.net • 1850 GRANT RD., E. WENATCHEE, WA 98802

CAT EXCAVATORS

314C; 315BL; 320LL; 320BL; 320C; 322CL; 320DL; 325L; 330BL; 345BL; 345CL; 350L

CAT TRUCKS

D25D; D250E; D300E; D400D

CAT SKIDDERS

D5H; D4H; 525; 527; 525C

CAT SCRAPERS

615, 621E

CASE

821; 9030B; 9040B; 9050; 9050B; 9060B

GROVE

RT745

LINK-BELT

210LX; 240LX; 290LX; 350LX; 4300 CII-Q; 5800 CII-Q; 6000Q

KOBELCO

ED150; SK290LC6; SK200LC IV; SK400LC IV; SK330

JOHN DEERE

120C; 160DLC; 200DLC; 230LC; 2554; 310SE; 330CLC; 350DLC; 450DLC; 550H; 544J; 544G; 600CLC; 624G; 644H; 644G; 648GII; 710D; 750B-C; 744H; 753GL; 772BH; 844J; 850J; 992D-ELC

SAMSUNG

SE 350LC2

TIMBCO

T425B-C-D; T445B-C-D; T445EXL; 475D; 475EXL

TIMBERKING

TK722; TK732; TK1162

KOMATSU

PC120-6; PC130-6; PC138US-2; PC220LC7; PC160LC-7; PC200LC-6; PC220-6E; PC228USLC-3; D155AX5; D355A; WA 200-1; WA180-1; WA400-1; WA320-1; WA180-3; WA250-3; WA500-1-3-6

TIMBERJACK

608; 628; 1210B; 2628; 1270B

HITACHI

ZX27U; ZX120; EX150; EX160; ZX200LL; EX200-5; EX200LC3; EX220-3; ZX270LC3; ZX330; ZX350LC; EX330LC5; EX400LC3; ZX450LC; EX550LC5; EX700; EX750-5; ZX850LC3

VALMET

EX10; 500T; 860; 892

VOLVO

A25C 6x6 Rock Truck; L330C; L120E; L180C; L220E

WE BUY HEAVY EQUIPMENT FOR PARTS AND RESALE...CALL US!Visit us on the web at: www.fraleytractorinc.com

KEEPING ORGANIZED

Pine Creek Logging's Shane Becker keeps the logs organized out on the Skagit GT3 landing with the company's Cat 320 B loader. Shane is also the chaser on this side.



2014 John Deere 748H Log Skidder, Dual Function Boom, Grapple, Winch, Good 30.5 Tires, 6,990 Hours, Direct Drive Runs Well, Tight Center.....\$139,500



1997 CAT 527 24,069 Hours, fixed-boom-grapple, No winch, Prolenc snubber, recent engine work, new CAT rails, pads and idlers, 7-roller track frame, good condition for hours\$132,500



1989 CAT D6H, grapple, fixed boom, NO winch, 19,543 hours, S/U blade, differential steer, good undercarriage, consigned, call for location.....CALL



1979 CAT D7G DOZER, Esco grapple, angle dozer, runs & shifts OK.....\$33,500



2001 VALMET 603S FELLER BUNCHER, Cummins, saw head, AC, chains on 28C tires, runs well.....\$32,500



1997 T300 Service Truck, Cummins, PAC brake, 10 spd, 221,049 miles, 255/70R/22 tires, Maintainer body, 6,000lb crane, gas compressor, was working daily...\$30,000

MPI EQUIPMENT

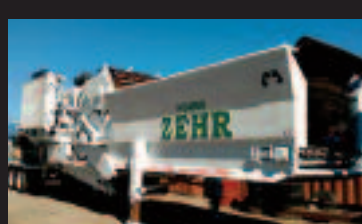
INCORPORATED

Call Chuck
530-221-6760

8537 Commercial Way Redding, CA 96002
chuck@mpiequipment.com
www.mpiequipment.com



1996 PETERSON 4400B GRINDER, CAT 3412 @ 800 hp, 3 axle w/all new tires, twin disc clutch, dual horizontal rams for feed, heavy rotor, good last clean older unit, approx 87,000 lbs w/o tractor.....\$89,500



2005 ZEHR HG4000 GRINDER, early Diamond Z, 2009 CAT C27, Tier II, 1,050 hp, remote, stacking conveyor, 8 NEW tires, good brakes, twin-disc clutch, hamermill approx. 62" x 17".....\$129,500



MORBARK 20 CHIPPER, new CAT C13 with 3,684 hours, 385 hp, Tier III, new tires, good brakes, lights.....\$69,500



2002 PRECISION HUSKY 66-23, Husky XL-175 loader, CAT 3412, 700/750 hp, Tier I, joy sticks, twin-disc clutch, feed table w/feed chain, cab, 12 new tires, good brakes, fresh oil, new paint, recent injectors, one owner, was working daily, 11,141 hours.....\$99,500



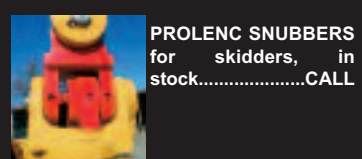
2013 Link-Belt 145x3 Spin Ace Excavators, 1,181 hours, CAB A/C, ESCO Bucket, Isuzu Engine, Good Clean Unit. Pattern Changer.....\$83,500



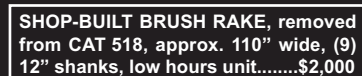
2012 Komatsu PC 360LC-10 Excavator, Cab Huard, A/C Radio, lube system, 30" dig bucket, 10'6" stick, tier 4, clean, rear camera, 33 1/2 pads, 54" bucket available, 226 hours since photos were taken, 2,408 hours.....\$160,000



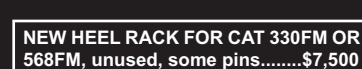
2012 Volvo EC35C Excavator, rubber tracks, bladern off set boom, runs well, thumb at extra cost, 1,215 hours..\$23,000



PROLENC SNUBBERS for skidders, in stock.....CALL



SHOP-BUILT BRUSH RAKE, removed from CAT 518, approx. 110" wide, (9) 12" shanks, low hours unit.....\$2,000



NEW HEEL RACK FOR CAT 330FM OR 568FM, unused, some pins.....\$7,500



1995 COZAD BABY 9-AXLE 2+2+2 LOWBED, 9' wide x 26' deck, drop sides, power tower in jeep w/20 hp Honda, 4 pin settings. Following items are NEW: all wheel studs, all 11R22.5 tires, all drums, all brakes, all bearings, all slacks, all S-cams, all lights, all wiring, all air lines, all air valves, all apitong deck, all oil caps, all seals, all air bags, all paint + more.....\$135,000



MIGHTY MITE 4A BAND SAW, Wisconsin gas engine, trailer mounted, all controls, last owner estimates it was used 6 times, like new.....\$21,500



WASHINGTON 188 YARDER, Detroit 8V92T power, 4-axle carrier, standing skyline. This is a good, clean unit that was working as of 06/10/16. Consigned, call for location.....\$250,000
EAGLET CARRIAGE w/controls available.....\$18,000



2004 Promac Bushcutter 36 CMP II, 36" disc, comes from Deere 200 W/Q/C, low hours unit, stamped weight 1,188 lbs.....\$15,000



2013 PROMAC 34 CFH III horizontal brush cutter, 34" wide, pinned for a CAT 315CL and others, very good.....\$24,000



2009 CAT 120M AWD, 14' Board, New Ripper, 6,229 Hours, 14:00x24 Tires, Good Clean Grader.....\$132,500



2012 VOLVO G990, Tier III, 265 hp, Volvo 11 speed transmission, 16' board, push block, rear ripper, joy stick controls w/steering wheel, 20.5 radials, super clean, prior demo rental unit, 967 hours,\$135,000



2010 JD 872GP, 6WD, 14' board, rear ripper, push block, NEW 17.5x25 radials, cab, AC, heat, radio, 9,125 hours, NEW paint, just off rent.....\$125,000



2013 CAT 930K, QC, bucket, 2,745 hours, prior rental machine, very nice condition, rental unit.....\$120,000



2010 PETERSON PACIFIC 5900EL, low hours, CAT power @ 765hp, C18, remote, 4-pocket disc, P.T. Tech hyd clutch, 3/4" chip size, end load spout, 300 gal. water tank w/pump for fire suppression IQAN screen, 2,400 hours, very good unit, consigned, west coast location.....\$265,000



ESCO LOG GRAPPLE, removed from CAT 518.....\$2,500

BRINGING UP A TURN

Chaser Carl Spray waits for John Deere 330L LC escoline operator Monte Anderson to land the turn that the Acme carriage is hooked to.



Pine Creek

(Continued from Page 8)

ging for Potlatch and about 40 percent for Bennett Lumber. This includes work on private land, state land and Forest Service land.

Eventually the markets changed and Pine Creek Logging moved away from CTL. Pine Creek expanded by getting a Linkbelt 98 in 2008.

Then in 2012 when Potlatch asked Henderson to do more linework and expand his company, he bought a Skagit GT3.

On the road building side, Henderson has a Hitachi EX200, 320 CAT excavators and two D6Hs to move the dirt. He also has a D8H for when jobs require a little extra "umpf." The road building side has done a lot of road maintenance lately,

(Continued on Page 11)
See "Pine Creek"

New! EAGLE RAPTOR



**NEW!
ELECTRONIC
CONTROLS!**

We
Also Have
Eaglets,
Super
Eaglets,
Eagle IV,
Eagle V,
Eagle VI
& Claws
Available

EAGLE CARRIAGE & MACHINE

**ECM CONTROL ON
ALL NEW MODELS!**

(541) 963-4646

Fax: (541) 963-3415

62500 Commerce Rd, La Grande, OR 97850
www.eaglecarriage.com

After Hours - Sam Baker
(541) 805-9504 cell

Worker's Compensation for Loggers!

and your liability needs, too.

Many of you know us as the agency to see for Disability Income, Medical and Life Insurance... but we are a full-service agency with packages dedicated to the logging industry and related businesses. We have excellent markets for:

- Worker's Compensation
- Commercial General Liability
- Logger's Broad Form
- Commercial Auto
- Cargo
- Commercial Property
- Inland Marine (Your Iron)
- Bonds



Photo courtesy of Jodie Compton

**Call today for more information!
866-514-3356 Toll-Free!**

360-274-6991 • 25 A Street SW, Castle Rock, Washington 98611

Wayne Lunday, LUTCF, CLU, ChFC

Aaron Lunday

Gail Mowrey, ACSR, CMSR, CRIS

Commercial Insurance Manager



A full-service, True Multiline Agency Dedicated to the Logging and related Industries
Licensed in WA, OR, CA (OD43750), ID, MT & AK
Commercial Insurance, Personal Insurance, Life, Disability Income,
and Individual and Group Medical Plans

Pine Creek

(Continued from Page 10)

working to shore up existing roads but also has built about five miles of new road this year.

Pine Creek has a Timbco 445 fellerbuncher, and a TimberPro TL735B for their fellerbuncher sides. When it comes to skidding they have two 527 CAT tractors and a 525 CAT wheel skidder.

Henderson also has a John Deere 2454 with a Waratah 623 processor head along with a CAT 330 with 385 Valmet head. In addition, he also has a CAT stroker and two CAT 320 loaders.

Doing maintenance is four mechanics for the company. One is completely dedicated to trucks while two work in the field. Mike Halen is the lead mechanic and he works on whatever needs to get done to



CHIPS FLYING

Operator Steve Halen makes the chips fly with the Timberpro TL735 he runs for Pine Creek Logging LLC. Steve has been running buncher for 10 years.

(Continued on Page 13)
See "Pine Creek"

**GEM Bars are
Precision Cut,
Precision Machined
Ballistic Grade Steel**

giving you the advantages of:
High Degree of Springback
and Bend Force Resistance
- Extended Wear Life -

GEM
Chain Bar

Harvester Bars - Rim Sprockets - Replacement Tips
Chain - Measuring Wheels - Bar Repair - Chain Loops

- GEM HARVESTER BARS -
.404 & 3/4 Pitch
150+ Standard Models
Custom Orders Welcome



800-455-8471 sales@gemchainbar.com

www.gemchainbar.com





THE SKAGIT GT3 CREW

The Skagit GT3 crew poses with Loggers World for a photo: (From left to right) Operator Lane Watkins, chaser/Cat 320B loader operator Shane Becker, hooker Brad Beyer, hooker Josh Szilasi and sawyer Cleve Branch.

You Can Own Timberland Within Your IRA INVEST IN YOUR OWN INDUSTRY Properties From 5 Acres Up

*Finally
you can invest in
something you
understand,
with someone who
understands
Logging and
Loggers*



RE/MAX
Key Land Company
Terry Akins
Agent

1015 Johnson Rd
Centralia, WA 98531
Office: 360-330-0804
Cell: 360-239-1253
Email: tbakins@msn.com

Each Office Independently Owned and Operated

**We can take care of your investment from
Purchase Through Management and Sale**

***"I've had an ad in every issue
for the last 25+ years."***

-Sam Madsen

MADSEN'S

SHOP & SUPPLY INC.

Centralia, Washington



Sam Madsen

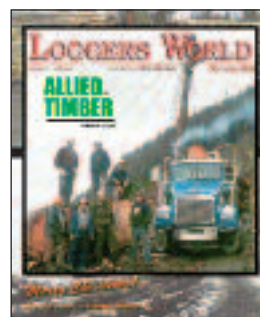
**Madsen's Shop & Supply Inc.
Advertises in Loggers World Magazine**

Sam Madsen knows he needs to stay in touch with his market and his buyers. He knows you will find Loggers World Magazine wherever there are loggers - in the machines on the landing, on the dash in the crummy, on the boss' desk, and in their mailboxes every month.

Madsen's Loggers World advertising puts them in touch with timber industry customers all over the western United States.

When we asked him about it, Sam said,

"Loggers World is a good fit for our market. I've had an ad in every issue for the last 25+ years."



Boost your sales by tapping into the power of the oldest and most recognized logging magazine in the west.

Call today to set up your advertising and put the power of LOGGERS WORLD to work for your business!

To advertise in Loggers World, call Kevin at:

360-269-0830

Pine Creek

(Continued from Page 11)

keep the company running smoothly.

"We've been trying to update things and we're doing our best eventually bringing in newer machines," Henderson said.

Pine Creek Logging does a lot of business with Gem Bar and Chain, Kenworth in Lewiston and Spokane, along with nearby CAT and John Deere dealers.

When it comes to Deary, there is some nearby hay farming but the big engine of the town's economy is the schools and the timber industry. Pine Creek has logged timber off the St. Joe National Forest and the Clearwater National Forest while also working on a lot of private land.

For Potlatch and Bennett they're hauling logs from anywhere to Naples, Lewiston and Plummer along with some trips

into Washington.

As it is with inland loggers, there's a spring breakup that lasts from Feb. to May and fall might have a few weeks where it's too wet to log.

Henderson admits to being a workaholic, something that's been said before in the pages of *Loggers World*, but along with his wife Diana, the two are EMTs for the local fire department and are involved in the community.

"I'd be lost without my wife Diana," Henderson said. "She does all the bookwork for the company and keeps us running."

And that's exactly what Pine Creek Logging keeps doing, running in the base of the Idaho panhandle as Steve finds new ways for his company to continue work in changing markets. While the work has changed through the years, Henderson and his employees' commitment to the job certainly hasn't.



CALL US FOR ALL YOUR DOOSAN NEEDS

Ask about our
Finance and Lease
Specials!

DOOSAN

Authorized Dealer

- Parts
- Service
- Sales
- Rental
- Lease



Serving the Northwest Since 1901

(503) 282-2566

Fax: (503) 282-1755

4800 N.E. Columbia Blvd., Portland, Oregon 97218

feenaughty.com

(541) 636-3660

541-357-4542

9404 Highway 99 N., Eugene, Oregon 97401

**FOR
MORE
INFO**

**GO TO
LOGGERS
WORLD
.COM**

CARLTON Harvester Chain

**ORDER
ONLINE**



www.HarvesterBars.com

End Greasing Frustration

**Grease goes in,
not on, the machine!**



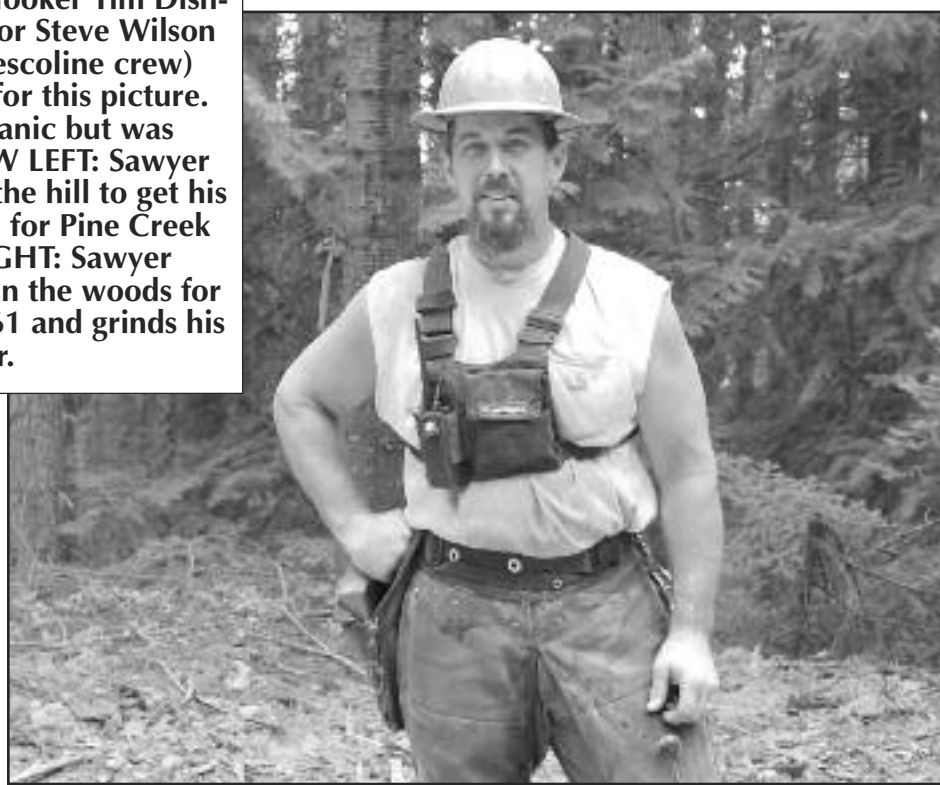
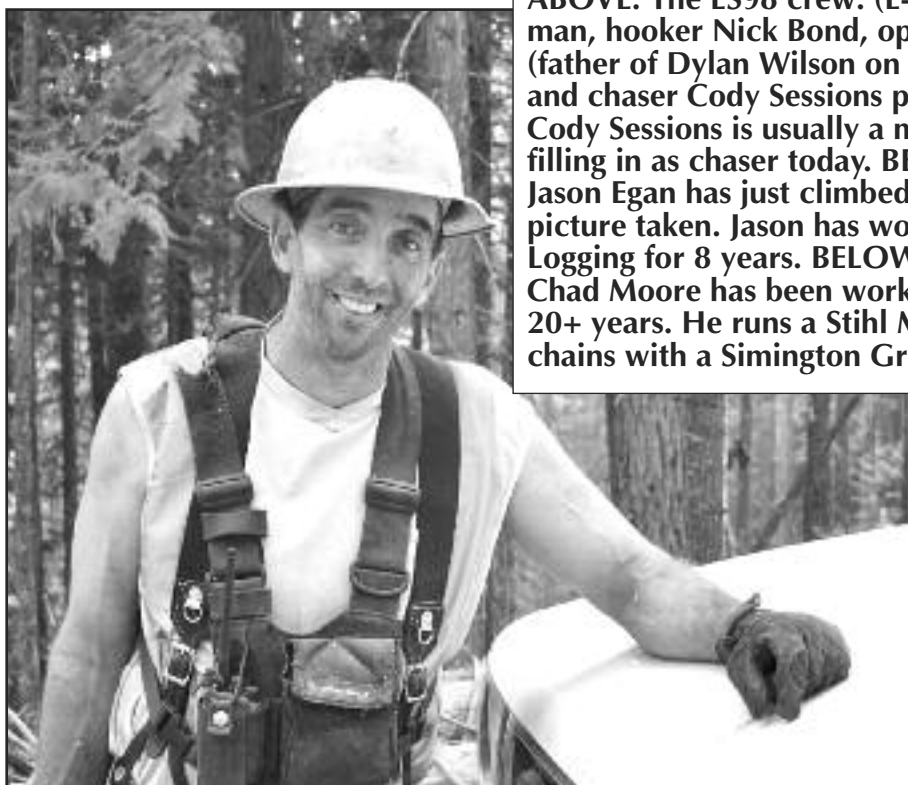
Lock and Lube
343 Dorchester Road
Lyme, NH 03768

ORDER ONLINE:
LockNLube.com
(603) 795-2298



CREW IN ACTION

ABOVE: The LS98 crew: (L-R) Hooker Tim Dishman, hooker Nick Bond, operator Steve Wilson (father of Dylan Wilson on the escoline crew) and chaser Cody Sessions pose for this picture. Cody Sessions is usually a mechanic but was filling in as chaser today. BELOW LEFT: Sawyer Jason Egan has just climbed up the hill to get his picture taken. Jason has worked for Pine Creek Logging for 8 years. BELOW RIGHT: Sawyer Chad Moore has been working in the woods for 20+ years. He runs a Stihl MS661 and grinds his chains with a Simington Grinder.





COWLITZ RIVER RIGGING



Ask about our Cab Guards

Full Service Shop

Full Service Rigging, Saw Repair & Work Clothing

www.LoggingSupply.com

Toll Free 1-800-488-3127

Great Buys

2012 Link-Belt 290X2, # 022656, 9603 hours with Pierce DM4550 delimber**\$250,000**

1998 Caterpillar 330B with a thumb & 48" bucket, # 022101, 22,102 hours.....**\$28,210**

2008 Deere 2554, stk # 022717, 16,001 hours, with Jewell grapple **\$75,000**

2008 Link-Belt 290LXTL w/Pierce TC52 grapple, 13,579 hours, # 021080**CALL\$**

2004 Link-Belt 210LX with a LogMax 7000, # 018155, 7,200 hours**\$CALL**

2006 Valmet EX10 Feller buncher, 9550 hours # 019195**\$135,000**

2011 Deere 959K with 340 saw, # 022447, 10,000 hours..**\$100,000**

2013 Link-Belt 290X2FHW w/Pierce TC58 grapple 7,519 hours # 022227**CALL\$**

Sales ▴ Rentals ▴ Service ▴ Parts

Portland | Eugene | Prineville | Seattle | Spokane | Mt. Vernon
800.221.8512 800.342.6780 888.662.2940 800.622.8876 800.945.9168 360.488.3948

Link-Belt
EXCAVATORS

Tigercat

KEM

www.triadmachinery.com

TRIAD
MACHINERY
CONSTRUCTION
AND FORESTRY



MOVING ON

Chaser Cody Sessions helps operator Steve Wilson spool the Link-Belt LS98 in preparation for moving to a new corridor



**ZENDER EQUIPMENT
COMPANY**

Contact: Kevin Zender (360) 319-7973

Rod Hansen (360) 520-6849

Bob Howell (541) 913-9559

Email: kevin@zenderequipment.com

rod@zenderequipment.com • bob@zenderequipment.com

www.zenderequipment.com • Everson, WA

LOG LOADERS

2013 Cat 324DFM, w/Cat grapple, 11,600 hrs, auto greaser, good u/c, xlent cond ..	\$150,000
2000 Kobelco SK 300, w/2 Pullmasters, tong tosser, Eaglet car, tree jack, grapple, new motor & pump, good uc	\$135,000
2007 Link-Belt 290, w/Pierce grapple, 20,000 hrs, forestry cab, new pump, good u/c.....	\$75,000
2011 Link-Belt 290x2, w/Pierce grapple, 11,500, new u/c, nice cond	\$190,000
2013 Link-Belt 290x2, w/Pierce grapple, 6,800 hrs, good u/c, nice loader	\$240,000
2012 Hitachi 210LL, w/Jewell grapple, 6,400 hrs, nice machine	\$172,500
2015 Doosan DX300LL, w/Jewell grapple, 3,500 hrs, like new cond.....	\$175,000
2011 JD 2454D, w/Pierce grapple, 10,700, very good cond.....	\$125,000
2005 JD 2054, w/Pierce grapple, tong tosser, rblt motor, new pump, u/c, rotex, drives and paint....	\$145,000
2014 JD 3754D, w/Jewell grapple, 6,000 hrs, nice loader	\$250,000
2006 JD 2454, w/Pierce grapple, 8,000 hrs, forestry cab, new motor, good u/c.....	\$115,000
1997 T-Bird 1238 LL, w/grapple, good nice old log loader	\$35,000
2006 Kobelco SK 330, w/Jewell grapple, 15,000 hrs, new u/c.....	\$135,000

DELIMBERS

2010 JD 2154D, w/2010 Waratah 622B, 15,500 hrs, 1,200 hrs on new motor	\$95,000
2011 JD 2454 LL, w/2011 Waratah 622B, 2,500 hrs on head, 10,700 on carrier, good cond.....	\$225,000
2004 JD 2554, w/2004 Waratah 624 Super, recent rblt motor & pump.....	\$80,000
2007 Madill 1800LL, w/Waratah 622B, 12,000 hrs, new drive motor and other repairs, log loader front..	\$140,000
2013 Link-Belt 290X2 LL, w/2013 Waratah 623C, 10,000 hrs, very good cond	\$260,000
2004 Link-Belt 210, w/04 Waratah 622B, good running machine	\$57,500
2006 Link-Belt 240LX LL, w/06 Waratah 622B, rblt head, good carrier, 18,500 hrs ..	\$90,000
2004 Komatsu PC300, w/04 Waratah 624 Super, 19,000hrs, good u/c, 2000 hrs rblt motor, recent pump..	\$130,000
2016 Doosan 225, w/Pierce GP, low 950 hrs on carrier, like new cond, 3000 hrs on GP head	\$305,000
1998 Timberjack 1270B, w/TJ 762 head, good rubber, w/track chains and lots of spare parts for head..	\$45,000
2011 Waratah 622B, w/TimberRite comp. controls, 2,500 hrs, xlent cond, installation avl., Call for price.....	\$70,000
2007 Waratah 622B, w/comp & controls, recent bushings, good cond, drive motors..	\$45,000
2004 Waratah 624 Super, w/comp & controls, recent drive motor and bushings, good cond	\$45,000
2004 JD 2554, w/DM 4400, good running delimber, 18,800 hrs.....	\$65,000
2001, Cat 320B, w/DT 4400, recent repairs & spare parts, 14,000 hrs.....	\$70,000
1998 T-Bird 1236, w/DM 3500, good running limber	\$27,500

ROAD BUILDERS

2014 Cat 568, digging & clean out bucket & thumb, pin grabber, 7,500 hrs, very good cond	\$210,000
2013 Cat 325DFM, w/digging & clean out bucket, 2800 hrs	\$290,000

BUNCHERS

2012 Tigercat L870C, Tigercat 5702 350 rotation saw, 10,000 hrs, good cond	\$190,000
1997 Madill 3200B, w/29" Rotosaw, recent complete rebuild	\$75,000
2013 Cat 522B, w/Cat 23" hot saw, good uc, tight machine, reman motor, 8,750 hrs.....	\$240,000

2006 Prentice 1190T, w/ Quadco 22" 360 rotation, Cummins power, new u/c, 6000 hrs, nice buncher ..	\$145,000
2011 Valmet 450 FXL, w/Quadco 22" 360 rotation head, good u/c, good pins & bushings.....	\$210,000
2001 Timbco 445D, w/32" bar saw, recent motor, pump,& drives, good u/c	\$85,000
1999 Timbco 445D, w/32" bar saw, runs good, excl u/c, recent motor & pump.....	\$65,000
Cat 2440 Hot Saw, 24" saw, 40 degree tilt, new bearing	\$12,500

SKIDDERS & DOZERS & GRADERS

2014 Tigercat 610C, front rubber 70%, new rear rubber, 3,100 hrs, very nice skidder	\$185,000
2010 JD 748H, bunching grapple, dual frctn boom, rears 90%, front 30%, 1 set chains, 5200 hrs..	\$125,000
2013 Cat 535C, dual frctn boom, bunching grapple, 35.5 X 32 rubber, 10,100 hrs....	\$85,000
1996 JD 648E, w/fixed boom, good rubber, w/chains, 13,000 hrs.....	\$35,000
1995 Cat D4H TSK, w/fixed boom & winch, rblt motor & new rails sprockets & shoes, recent rolls & idlers	\$70,000
2012 Cat 517, swing boom, only 2,800 hrs, auto lube system, new rails & shoes, like new cond	\$250,000
Dresser TD15, w/grapple, single frctn boom, w/tilt blade, good u/c, nice dozer	\$28,000
Cat D7G, w/winch, Cab w/AC, straight w/tilt blade, 4,800 hrs, very good u/c, xlent cond	\$72,500
Cat D7F, w/winch	\$25,000

YARDERS & SWING YARDERS

Washington 78SL, 3 guyline, rblt Detroit 6V71T power, good u/c, nice cond, run all logging systems..	\$107,000
1982 Washington 118, Major rebuild last year, new 8V92, air & hyd systems, New wheeler single lever controls	\$275,000
2000 Kobelco SK300, w/2 Pullmasters, tong tosser, Eaglet car, tree jack, grapple, new motor & pump, good uc..	\$135,000
Diamond D210, rblt Cummins & fuel pump, new bearings in drum set, boom & gantry, good lines	\$320,000
2003 Diamond T8000, track mount, 8 guylines, Cummins 855 Twin disc 5 speed, under 100,000 lbs total	\$640,000
Madill 071, Detroit 8V92T, water on all drums, 4 guyline, good lines, nice yarder.....	\$110,000
T-Bird TY90, T100, self propelled, 8 guylines, Cummins KTA power	\$410,000
T-Bird TTY 70, Detroit 60 Series 475 hp, Allison CTL6061-4 trans, good lines, 4 jacks, nice yarder	POR
T-Bird TTY 70, Cummins power, recent rblt, good lines	\$475,000
T-Bird TTY 70, good u/c, Cat power.....	\$520,000
T-Bird TSY 255, Detroit 8V92T, c/w msp, good u/c, very good cond	\$475,000
T-Bird TSY 6140, Cummins power, 50' boom, very good cond	\$390,000
T-Bird TSY 6140, new motor & trans and drum bearings, 1 season on lines.....	\$370,000
T-Bird TMY 50, Detroit 8V92T, good lines, nice yarder	\$320,000
T-Bird TMY 45, track mount, rblt drum set, rblt motor & torque, nice yarder, will consider trade for buncher....	\$125,000
T-Bird TMY 45, trl mount, rblt Cummins power, c/w Eagle 2 car & rigging, M-123 GI truck avl.....	\$85,000

TRUCKS & FIRE TRUCKS

1991 International 9300, 16' Alum box, steel bottom, rblt Cat 3406B, 18 speed, Dt 402 rears & Hendrickson spring over walking beam, new clutch, c/w Sturdy Weld 3 axle 1 lift axle Alum transfer trl.....	\$70,000
Sturdy Weld, 3 axle 1 lift axle, Alum steel bottom pup trl.....	\$30,000



ON ITS WAY

It's all about having the right equipment in the right place. Driver Steve Moore (AKA "Texaco") stops for a picture on his way to deliver Pine Creek's JD 2454 with Waratah 623C processor.



HERE YOU GO!

Brent Roby uses the Cat 527 to deliver another grapple full of logs for Dan Harpole to process with the Link-Belt delimber.

www.acmecarriages.com

FORTRONICSTM LTD
FORESTRY ELECTRONIC CHOKER SYSTEMS

ACME
Manufacturing Inc.

90099 Prairie Road
Eugene, OR 97402
Phone 541-741-2200
After Hours: 541-554-9414





HERE IT COMES

One more load on its way for Pine Creek Logging. Al Mattox drives a 2004 Peterbilt 379 with Alpine Trailer for Pine Creek Logging LLC.



Cedar Rapids Rock Crusher,
self contained, rolls, jaw, & screen deck.
\$28,500

CAT D6C
Parting
Out



Cat 140G, VHP ripper, Balderson hyd.
snow wing **\$55,000**



Cat 315L & 315CL Parting Out



Rebuilt
Cat
3046



Cat
988B
Parting
Out

CAT D342
High HP.
rebuilt
Call



CAT
316, 320, 325, 330
Wedg Coupler
Buckets



DUKES
PARTS & EQUIPMENT
509-952-9223

204 Butterfield Rd., Yakima, Wa 98901 Shop: 509-469-9420

Check us out online: www.dukesheavyequipment.com

SCHMUNK'S TIRE CENTER

2650 MAIN
SPRINGFIELD, OR 97477

**"One of the Northwest's
Largest Chain Distributors"**



TOLL FREE 1-800-242-8473

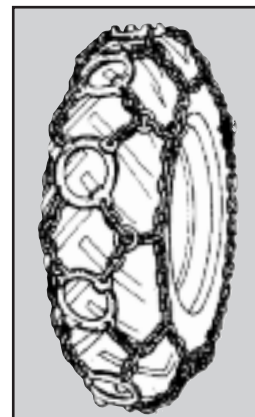
541-746-1604 • Ask for Dan
HOURS: 8 AM - 6 PM Mon.-Fri.,
8 AM - 5 PM Sat., Closed Sun.
Email: dan@schmunks.com

SKIDDER AND LOADER CHAINS
RING STYLE • 23.1 x 26 (9/16")
(1695^{.95}) PR.

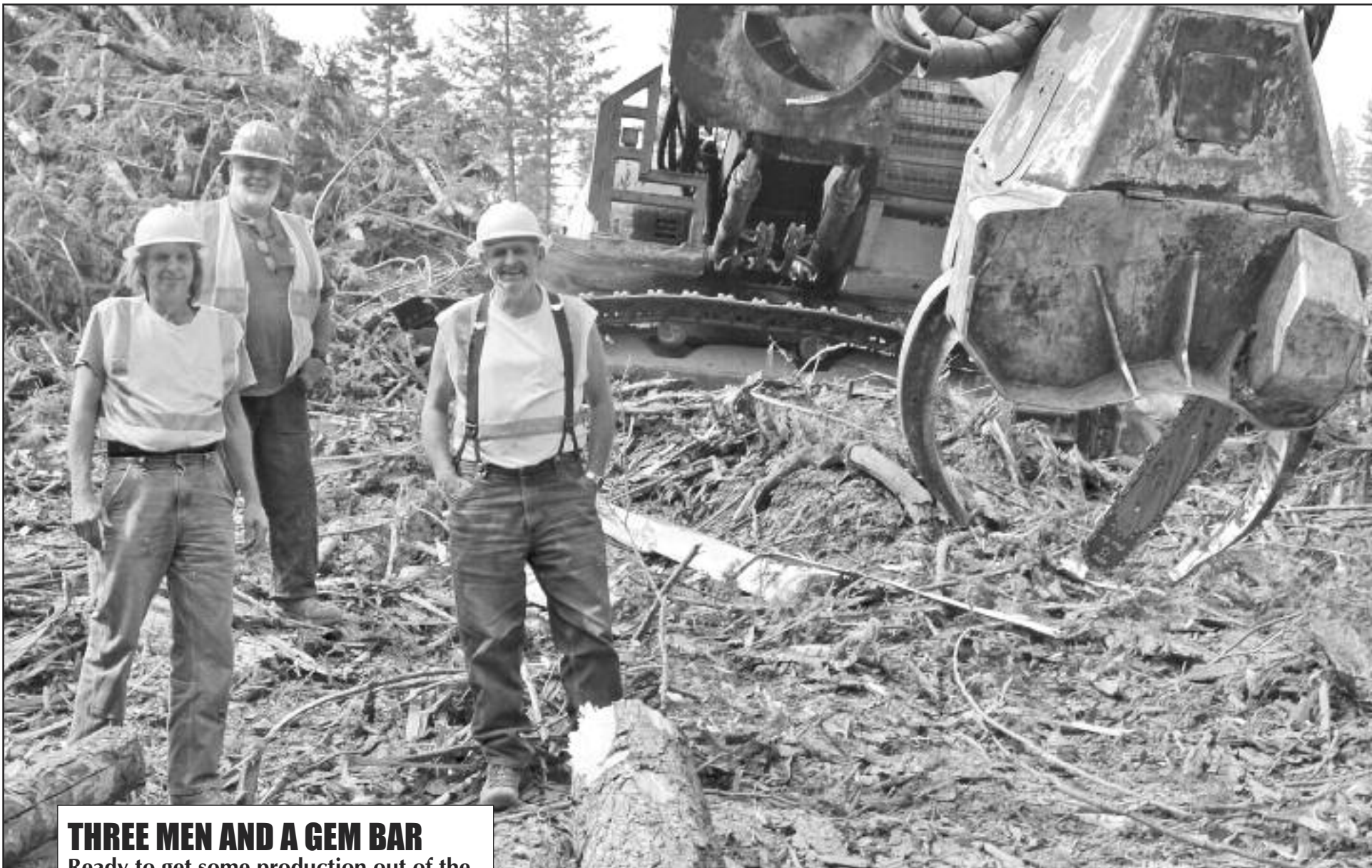
CAM LOCK TRUCK CHAINS
SINGLES (49^{.95}) • DUALS (99^{.95})

"Huge Inventory"

of Truck & Skidder Chain in other sizes available at Similar Savings
Ask about our Large Stock of Used Off-Road Tires



RING STYLE



THREE MEN AND A GEM BAR

Ready to get some production out of the way is (left-to-right) Cat 527 skidder operator Brent Roby, Link-Belt delimeter operator Dan Harpole and Cat 324D loader operator Roger Hays standing next to the delimeter with GEM Bar.

CHECK US OUT ONLINE!

**LOGGERS
WORLD.COM**

MDI

Mechanical Design Inc

HYDRAULIC CYLINDER REPAIR
PORTABLE LINE BORING
MOBILE WELDING
CUSTOM FABRICATION/REPAIR

30805 OR 34 - Albany, OR
541.791.2028
www.mechdesigninc.com



KEEPING THINGS RUNNING

TOP LEFT: Steve Henderson (left) talks with Lead Shop Mechanic Mike Halen about the day's events.

TOP RIGHT: Field Mechanic Kirk Wight prepares the pressure washer for another clean up job.



BOTTOM LEFT: Richard Rustand is working on some rear lighting for a log truck.

BOTTOM RIGHT: Mechanic Frank Sievers helps keep things running at Pine Creek Logging LLC.



USED PARTS FOR

CONSTRUCTION & LOGGING MACHINERY

Crawlers, Loaders, Trenchers, Excavators,

Backhoes, Skidders, Skid-Steers,

Engines and Transmissions

"Rely on our Experience - Est. 1967"



1-800-626-6046

**Schaefer
Enterprises**

4535 St. Rt. 3 N. • P. O. Box 136, Wolf Lake, IL
www.sewlparts.com - parts@sewlparts.com

Most Major Credit Cards Accepted

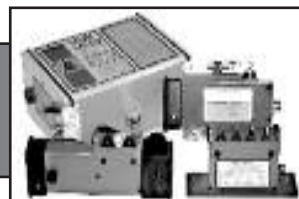


**ROTHENBUHLER
ENGINEERING**

HOME OF THE *Talkie Tooter*

MARK III WHISTLE CONTROL

now in the 72 MHz band, get away from congested frequencies with a proven design



CARRIAGE CONTROLS

rugged radios that can control most manufacturer's carriage from the ground or the yarder

**Rugged, Durable,
Industrial Radio
Equipment since 1946!**

P.O. Box 708, 524 Rhodes Rd
 Sedro-Woolley, WA 98284-0708
Telephone 360-856-0836
www.talkietooter.com



MORE OF THE CREW

ABOVE: Here is more of the Pine Creek Logging crew: L-to-R is processor operator Chuck Fletcher, buncher/skidder operator Colton (Pugh) Thatcher and loader operator Lester Zimmerman.



SUBSCRIBE TODAY!

LOGGERS WORLD

"The Logger's Magazine," is concerned with what concerns loggers

12 Issues – 1 Year Subscription

\$25⁰⁰

WA Residents pay \$27.40 w/tax
Inside U.S.A.

Offer expires
December 31, 2017

LOGGERS WORLD

Send your check or Money order to:
LOGGERS WORLD LLC
P. O. Box 1631
CHEHALIS, WA 98532

☐ \$25.00 for 1-Year Subscription ☐ \$50.00 for 2-Year Subscription

WASHINGTON RESIDENTS PAY \$27.40 & \$54.80 w/SALES TAX

NAME:.....

ADDRESS:.....

CITY:..... STATE:..... ZIP:.....

PHONE: ().....

(ALLOW 5 WEEKS FOR DELIVERY OF FIRST ISSUE)

IN THE OFFICE

Office Assistant Karli Bennett helps keep the work flowing in the Pine Creek Logging LLC office.

Rigging Shack

(Continued from Page 3)

This is just a sample of the changes that go on inside any organization.

QUESTIONS AND ANSWERS:

Question: "How come you fellows only write about Loggers who belong to an Association?"

Answer: "That question or accusation may be generally true without us realizing it. There is no specific plan to write only about those loggers who belong to an Association. We do not ever say we aren't going to write about a logging operator because he does not belong to an Association.

There are good logging operators who do not belong to any trade group I am sure. They have their reasons for not joining and I have some sympathy and understanding for those reasons.

We do write about non-joiners but we write more about the people in the trade associations. There are several reasons for this.

One reason is that many good logging operators do belong to associations. Another reason is that most associations put out a directory of the membership of their Association complete with names and addresses and phone numbers. This makes it very simple and handy for us to call these logging operators and to set up a time to visit their operations.

It is more difficult to find

those logging operators who do not belong to the Association or Associations.

We need a place to start in order to find the logging operator. With your help we can find more of them.

Statement: "You won't write about our operations because we don't have the right brand of machinery.

Answer: "That isn't generally true. It would probably be true if you had logging machinery built in Russia --- but then I don't know anyone who buys their machinery there."

"We do tend to write about logging operators who are using more standard machines and methods because we want to report on the most usual ways of doing things rather than to report upon the very strangest and latest."

GENERAL DISCUSSION:

Many people ask us how we make a selection of the people we do write about. We don't have a designed plan for this selection. It is hard to tell ahead of time who will be working and where. Generally we try to travel the farthest away from home during the summer months and stay closer to home during the winter months. There is also the fact that vast areas of the logging country is shut down over long periods due to weather.

We have some names in mind that we intend to visit when things are right. We do plan our issues of Loggers World ahead of time. We al-

ways remember that these plans must be flexible as dictated by economic factors and weather.

We seek information about logging operators from many sources and the people who sell and service machinery help us in this area a lot. Although we do visit logging operators to watch one particular make and model of machinery operate we generally don't even know what kind or type of machinery the operator uses until we get on the job. We try to report upon what is happening where we are in the woods.

We get many letters that start out, "You'd ought to do an article on this or that logging outfit." Many times it takes us several years to get around to visiting that operation --- and sometimes we never do. Sometimes the operation has changed or moved before we get there. Other times the operation has been sold.

The constant thing about the Logging Industry is change.

Other times we visit a particular part of the country to see what is going on there. One time for instance I went to the Garberville, California area and got in touch with Ken Wallan of Miranda. He only knew of one logging operator in the area who was working. That was Del Gott and we enjoyed meeting Del and doing a story on he and his crew. Far as I know that was the only operator working at that time.

We went up to Del Gott's job,

Kenny Wallan and I did. We got thru with this operation and headed down the hill. Now Ken had parked his Vehicle at the bottom of the hill and we had taken my pickup to the job.

My Black Lab Patty was with us in the back of my pickup, where she rides with much enjoyment.

We got back to the main road and Ken got out to get in his rig and then we were going to go to a restaurant for lunch.

I dropped Ken off and went down the road and parked for a little bit to allow him to start his rig and get past me to lead me to the groceries.

We got to the restaurant and as we were waiting there, Ken seemed to know everyone in the place, the local dog catcher got a phone call that someone had thrown away a black dog. The dog catcher was in a hurry to finish eating so he could go pick up that dog.

I got a sinking hunch and went out and looked in the back of the pickup. Patty was gone. Ken and I went back up the river and sure enough there was Patty patiently waiting alongside the road.

Guess she had jumped out to get a drink of water while I was waiting for Ken to pass me.

That turned out good for me and the dog. If I didn't bring her home with me I doubt if Jean would let me in the house.



KOVASH LOGGING RETIRING



Thunderbird TMY-70
\$490,000



Short Logger Trailer
\$12,000

Lowboy Trailer
\$19,500



360-825-4263

WANTED

Experienced Field Mechanic
and/or Truck Mechanic
call Papac Alaska Logging

907-965-4222



As We See It....

Making a Difference in the Lives of Loggers

By Mark Turner

I was born the son of a logger.

When my Dad started logging, back in the fifties, things were a lot different then they are now. Logging was an easy business to get into and there was a lot of money to be made. As my Dad used to say, "all you needed was an old wore out cat and a chainsaw and you were a logger". Back then, loggers were also some of the best paid and most respected workers around.

My experience with logging started as a young boy watching my Dad operate his logging business. I remember my Brothers and I riding up to the job, during the summers and on Saturdays. As our Dad worked, we would explore the area and build forts. It was a great experience for a young boy. Unfortunately, it's not something that many young people experience any more.

As my brothers and I grew older, we started becoming integrated into the operation. I can still remember how proud I felt when my Dad told me that I "would make someone a great worker someday".

I remember how hard my Dad worked, to keep the business going. Spending a lot of late nights either in the office or out in the shop.

I think I would have been perfectly happy to have gone straight into logging, after high school. However, after a lot of encouragement from some teachers and my Mom, I decided to go to college.

After graduating, I started a promising career as an engineer in the aerospace industry. It was fulfilling work; however, thoughts of the woods were always on my mind.

I have heard that you can take the logger out of the woods but you can't take the woods out of the logger. I have

found this to be very true. In fact, I missed the woods. I missed working with my Dad and my Brother.

So, I came back. I worked hard and learned the business. I found that with hard work, I could make a comfortable living.

That doesn't mean that it has always been easy. As many of you know, running a logging business can be very challenging. Even in the best of times. But, in tough times, it can be brutal. And we've had our fair share of tough times.

As loggers, we have always been very self-reliant. When times get tough, instead of complaining, we just work harder and find a way to make it through. In my opinion, loggers are some of the most innovative people this country has.

One of the things we have never been very good at, however, is blowing our own horns. Most of us figure that actions speak louder than words. That if we do a professional job, we will get the credit we are due. Unfortunately, in today's world, that's not always the case.

That's where the American Loggers Council comes in. This coming year, I will do all I can to ensure that the voice of the American Logger will be heard. It doesn't matter if that logger has a multi-million-dollar company and employs a hundred people or is just a one-man operation. We will work to ensure that loggers are better appreciated by the public at large as well as the people we work for and sell to.

We will continue to work to advance the professionalism of the American Logger. Particularly through master logger certification. We will continue to work to open more of our public lands for more active forest management. We will work to find new markets

for our products. The American Loggers Council will continue to be the go to organization on national issues that affect the logging industry.

When I first got involved with The American Loggers Council, I was struck by how much I had in common with other loggers, across the country. We all go about our business in a different way. But, in the end, we are all loggers. Honesty, dedication to family and a penchant for hard work, are some of the traits we have in common.

Whether we realize it or not, us loggers are the heart and soul of the timber industry. We produce the raw materials that every single person in this country uses every single day of the year. Without us, quite frankly, I don't think the timber industry can survive.

So, as loggers, where do we go from here? We face a number of challenges and opportunities. In fact, I think our industry is at a critical juncture. Technology continues to advance at an even greater pace. How are we going to incorporate these new technologies into our businesses to make ourselves more efficient? Whether we like it or not, we are part of a global economy and that often means increased competition. At the same time, the average age of a logger keeps getting older. And, we struggle to find enough young people to work in our industry.

How we address these issues now, will have lasting effects on the future viability of our industry.

I believe that The American Loggers Council can be a guiding force. An organization by loggers, for loggers, helping to bring loggers together from all across this great country. We can do so much more together than apart.

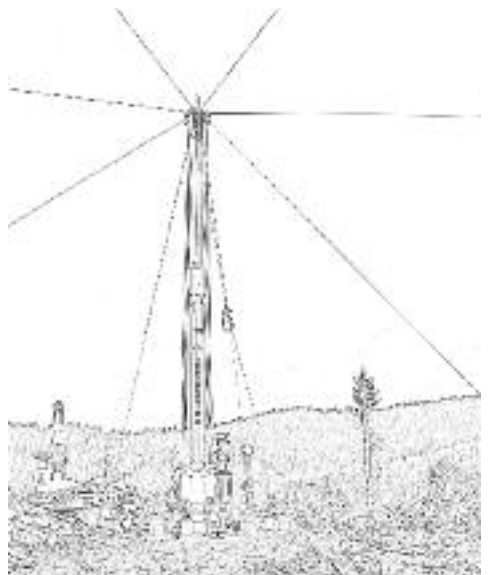
So, it is with great humility, that I accept the Presiden-

cy of the American Loggers Council. And I hope that you will join me, this coming year, to help make a difference in the lives of loggers.



Mark Turner is the President of the American Loggers Council. Mark and his brother Greg operates Turner Logging out of Banks, Ore. Mark is an active leader with the Associated Oregon Loggers.

The American Loggers Council is a 501 (c)(6) not for profit trade organization representing professional timber harvesters in 32 states across the United States. If you would like to learn more about the ALC, please visit their web site at www.amloggers.com, or contact their office at 409-625-0206.





Summary Judgment....

Secretary Zinke's Monumental Disappointment in Montana

by William Perry Pendley

Secretary of the Interior Ryan Zinke's leaked report on President Trump's ordered review of 27 national monument designations or expansions of the last 21 years was terribly disappointing. He failed to recommend revocation of any Clinton and Obama decrees despite finding that many failed to satisfy the requirements of the Antiquities Act of 1906. He offered boundary adjustments for only four (two in Utah, one in Oregon, and one in the Pacific) but suggested, with unwarranted optimism, the worst of the others could be eased by expanding the lawful activities there. Finally, he urged using the widely discredited Act to set more land off limits, including, in his backyard in Montana. Because the national forest he wants closed holds oil and gas leases issued by the Reagan administration that were cancelled illegally by Obama's official, the question is whether he and Attorney General Jeff Sessions will defend lawlessness.

In 1982, the Bureau of Land Management (BLM) is-

sued Sidney M. Longwell of Baton Rouge, Louisiana, a 6,247-acre oil and gas lease in the Badger-Two Medicine Area of the Lewis and Clark National Forest—south of Glacier National Park, the Great Northern Railroad, and U.S. Highway 2, east of private lands, and southwest of the Blackfeet Reservation in Glacier County in northwestern Montana. In 1983, an application for permit (APD) to drill a single well was submitted to evaluate the potential of that part of the Overthrust Belt, whose unique geology may yield "100 trillion cubic feet of natural gas." After repeated reviews under the National Environmental Policy Act (NEPA) and National Historic Preservation Act (NHPA), which found no "cultural resources" and identified "no religious site or activities," the APD was approved in 1985, 1987, 1991, and finally in 1993—subject to onerous mitigation measures and mandated new reviews if producible quantities of energy were found.

Nonetheless, the Clinton administration tried to kill the lease. In 1993, 1994,

1995, 1996, and 1997, Secretary Babbitt temporarily suspended lease activity for various purposes; then, in 1998, he made it indefinite. (In 1983, the nearby Blackfeet tribe supported leasing, but over the years changed its position, issued drilling rights on its reservation, and asserted the area is sacred, although one federal official suggested that a \$5 million payment would remove all objections.) In 2013, Mr. Longwell sued Obama officials to end the decades-long suspension. In 2015, hearing of his forlorn plight, a federal judge called it "Kafkaesque" and ordered a prompt decision. In 2016, the Secretary of the Interior ruled; but, instead of allowing Mr. Longwell to do what he contracted for and was lawfully permitted to do, she cancelled his lease and voided his APD.

To call the decision unprecedented is an understatement. At no time in the history of the Mineral Leasing Act of 1920, which has been amended and updated over the decades and through which Congress authorized Secretaries to issue and oversee oil and gas leases, such as the one held by Mr. Longwell, has an energy lease been cancelled, unilaterally, let alone one issued more than three

decades earlier and subjected to a decade of intense, thorough, and painstaking review. Stunningly, however, federal lawyers concede that the cancellation of the 33-year-old lease is not based upon any express delegation of authority from Congress. Instead, they propound an amorphous "inherent authority" under the Constitution's Property Clause, which reads, "Congress shall have Power to dispose of and make all needful Rules and Regulations respecting the Territory or other Property belonging to the United States...." That makes one thing clear: the power over all federal lands belongs solely to Congress and grants no authority, express or implied, to the Secretary.

President Trump and Secretary Zinke have done so much right on energy issues; it would be outrageous for them to allow a parochial issue, a desire to expand the government's power, and deference to win-at-all-cost federal lawyers to subvert the rule of law.

Mr. Pendley, a Wyoming attorney, is President and Chief Legal Officer of Mountain States Legal Foundation and a regular columnist in Loggers World.



Call (800) 422-0074 or join
online at www.loggers.com

Membership Highlights...

- Master Logger Program (exceeds SFI logger training requirements)
- Monthly Springboard Magazine
- First aid/cpr and pilot car training
- Log A Load For Kids® - giving campaign for Children's Hospitals
- WCLA Insurance Agency - top coverage for the timber industry
- Employee benefits programs through WCLA's benefits partner: Kibble & Prentice
- WCLA Claims Management Program - providing the benefit of savings on L & I premium costs, improved safety standards and reduced claims costs

I BUY LOG SKIDDERS

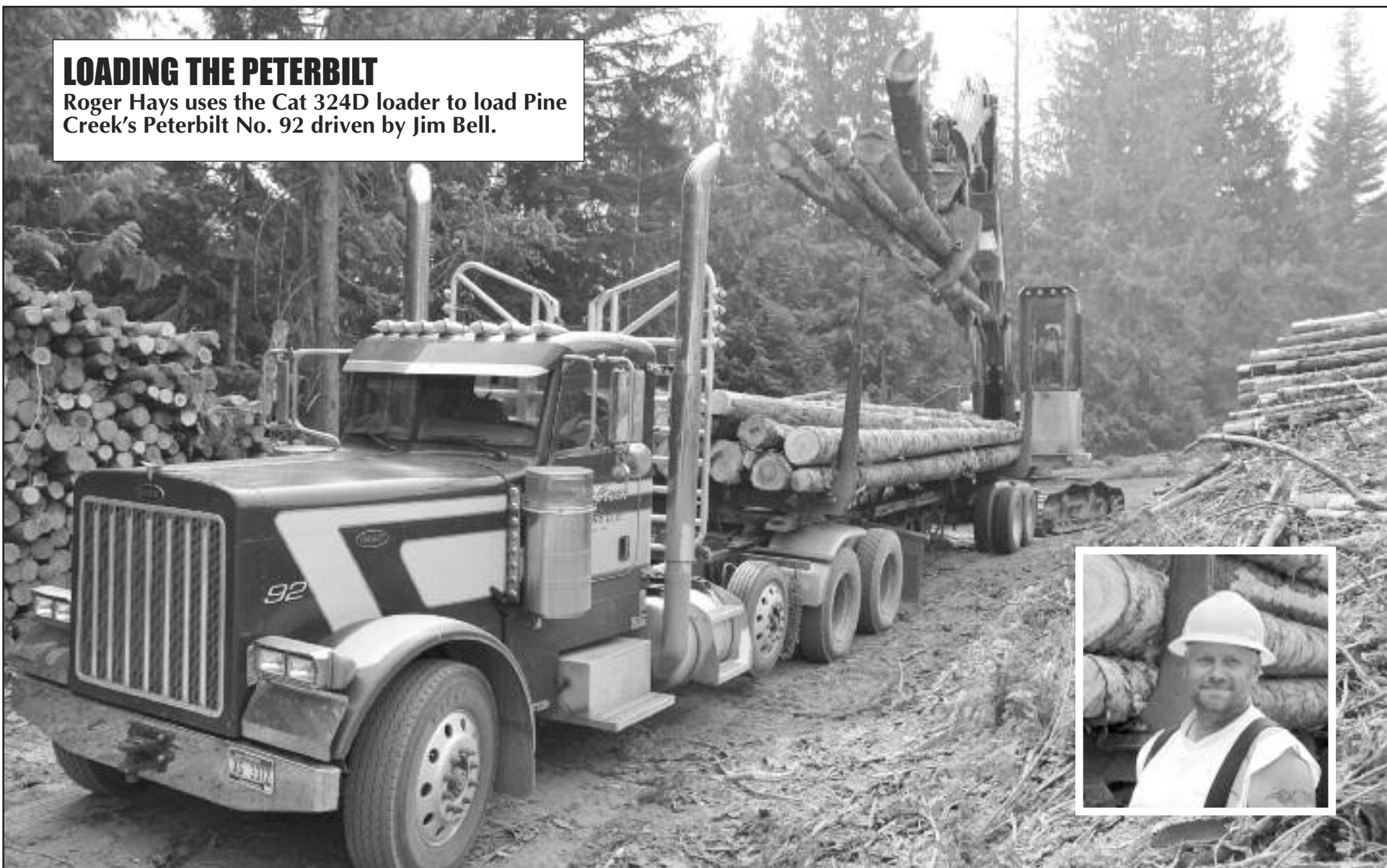


- Dozers
- Loaders
- Excavators

1-503-545-0007

LOADING THE PETERBILT

Roger Hays uses the Cat 324D loader to load Pine Creek's Peterbilt No. 92 driven by Jim Bell.



A Great Gift for that Hard-to-Buy-For Person



Endangered Species **\$15.00**
Plus \$5.50 Shipping

"Endangered Species" - In 1989 Craig & Terry went back into the studio to record their next album. Craig wanted to share his point of view through music which addressed some of the political issues facing the logging industry at that time.



You Hold Me Still **\$15.00**
Plus \$5.50 Shipping

"You Hold Me Still" - In 1992 after many requests to record a gospel album they again returned to the studio and recorded eleven original songs. Two of the songs are co-written - one with Don Beck and one with Rick Barrows.



Songs from the Siuslaw **\$20.00**
Double Album Plus \$5.50 Shipping

"Songs from the Siuslaw" (pronounced SY-u-slau) is a heartfelt tribute to the hard working men & women in the logging industry and dedicated to the many men who have lost their lives doing one of the most dangerous and unappreciated jobs in the world. This a double CD set that was recorded live in Florence, Oregon in 1999 at the Florence Events Center. The first CD is saw-shaped and will play in top-loading and tray loading CD players ONLY. It comes with a 20-page booklet filled with humorous lyrics and old logging photos.

Order on their website for fastest service:

www.ctmusicoregon.com

Or if you prefer not to order on-line you can call them at: **541-268-6910**



The Snag Fallers Ball **\$15.00**
Plus \$5.50 Shipping

"The Snag Fallers Ball" - A light hearted collection of original songs about logging in Oregon and Alaska, and was first released in 1988. Craig wrote nine of the eleven songs on the album and co-authored two others with Don Beck, a long time friend, logger and musician also from the small town of Mapleton, Oregon.



Special Deal!

ALL 3 CD'S **\$40.00**

Snag Fallers Ball, Endangered Species & You Hold Me Still

Plus \$5.50 Shipping



SUPER Special Deal!

ALL 5 CD'S **\$60.00**

Snag Fallers Ball, Endangered Species & You Hold Me Still

Plus \$6.50 Shipping

PLUS

Songs from the Siuslaw (double album)



Please send me the items I have checked!

Send your check or Money order to:

CT MUSIC OREGON
86399 SWEET CREEK RD,
MAPLETON, OREGON 97453

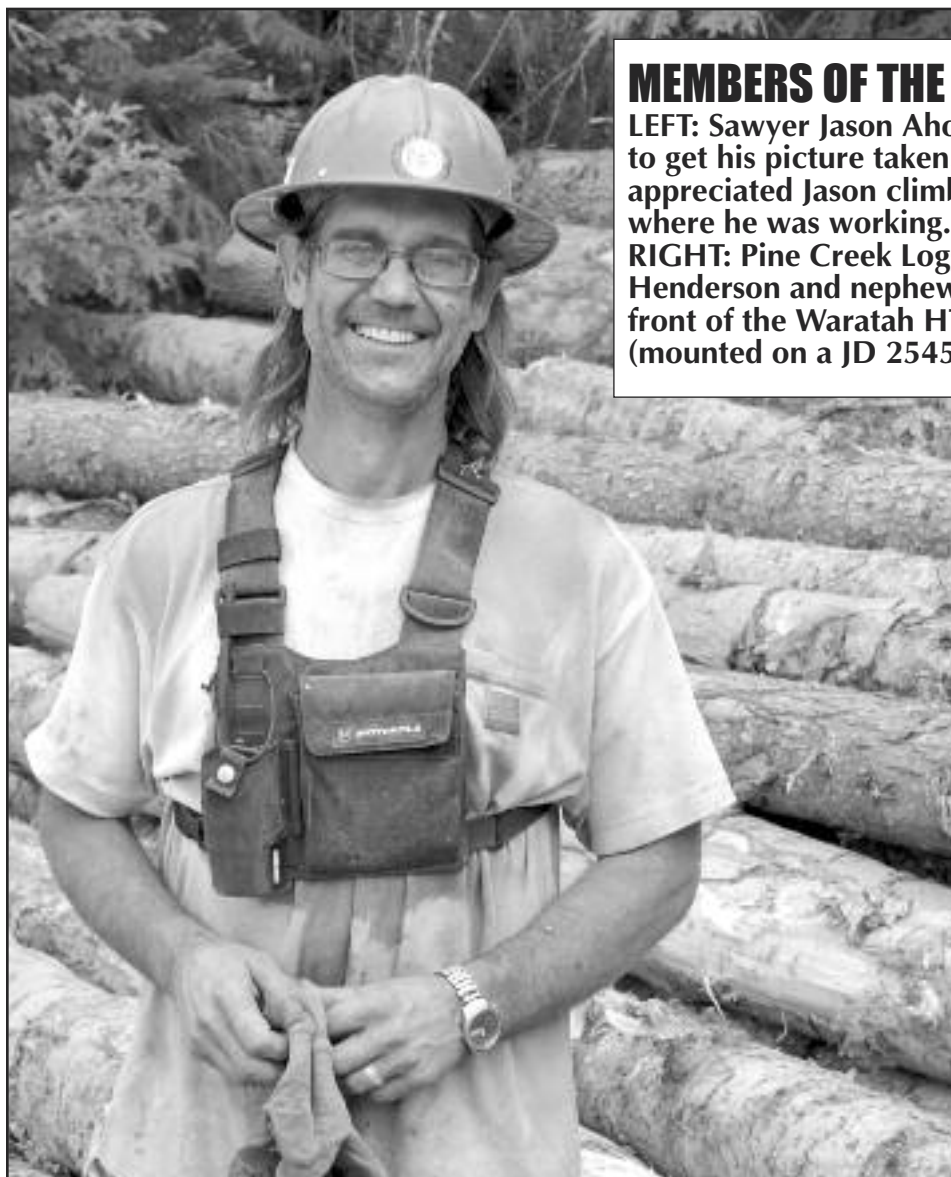
NAME:

ADDRESS:

CITY: STATE: ZIP:

PHONE: (.....)

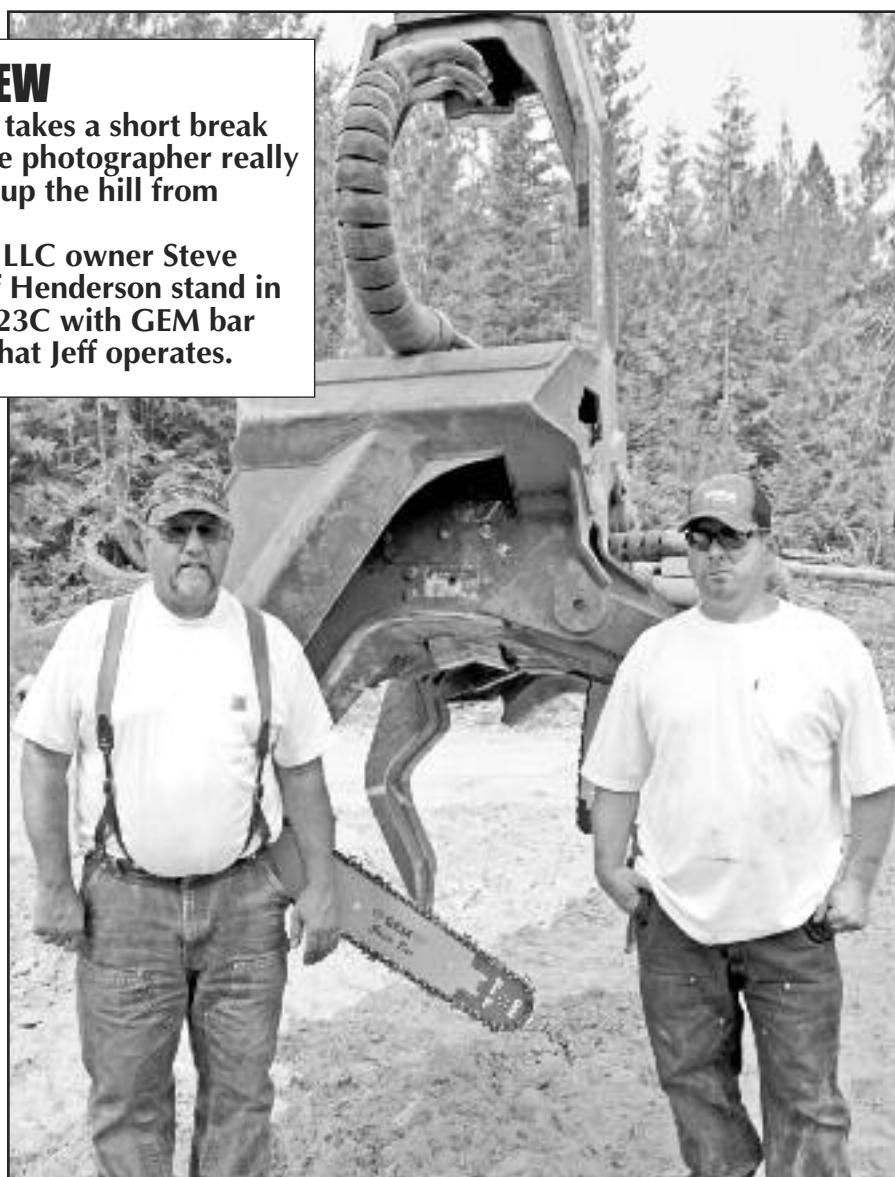
(ALLOW 3 WEEKS FOR DELIVERY)



MEMBERS OF THE CREW

LEFT: Sawyer Jason Ahonen takes a short break to get his picture taken. The photographer really appreciated Jason climbing up the hill from where he was working.

RIGHT: Pine Creek Logging LLC owner Steve Henderson and nephew Jeff Henderson stand in front of the Waratah HTH623C with GEM bar (mounted on a JD 2545D) that Jeff operates.



LOGGERS WORLD Suspenders are Back!!

HELP SUPPORT LOGGERS WORLD MAGAZINE

by wearing *Loggers World Suspenders*

Loggers World Suspenders are now available in traditional red (2" wide) with black lettering. You can order them with leather ends or clips and we also have the buttons. Just use the handy form below.



*A Great
Stocking Stuffer or
Christmas Present
for Your
Favorite Logger!*

Only
\$18.50 per pair

(Washington Residents pay
\$20 including Sales Tax)

Plus \$7.50 shipping & handling



PLEASE MARK YOUR PREFERENCE & SIZE...

☐ LEATHER ENDS

☐ METAL CLIPS

☐ 46"

☐ 46"

☐ 50"

☐ 50"

☐ 54" 54" Leather Ends
Backordered for 6 weeks

☐ 54"

☐ BUTTONS for Leather Ends

\$3.00
Pkg.

Send your check or Money order to:

LOGGERS WORLD LLC

P. O. Box 1631

CHEHALIS, WA 98532

Credit card sales call: 800-462-8283

Offer expires
January 31, 2018

NAME:

ADDRESS:

CITY: STATE: ZIP:

PHONE: ()

**CHECK
US
OUT
ONLINE
AT:**

TEREX DOZER PARTS

New 9" pitch drive sprockets	\$1,900 each	Front blade hyd. cylinders.....	\$1,600
New 8" pitch drive sprockets	\$1,800 each	Track tightener cyl	\$400 - \$800
Pair used 9" pitch tracks and pads for Terex or Cat, 1.5 inch grousers	\$2,500	New rebuilt Detroit inline 6-71 engine ...	\$9,000
Bottom Terex rollers.....	\$400 - \$700 new	Good running Terex dozers with blade and drum.....	\$16,500 - \$19,500

**503-831-2244
503-623-2089**

TRIPLE T EQUIPMENT
Rickreall, OR 97371

Numerous parts available
clp_inc@msn.com

LOGGERSWORLD.COM

IRONMART

TOLL FREE: 1-800-462-8283



DEADLINES: by mail, 5th of month prior to publication.
Phone your order toll free 8:30-5:00 p.m. Monday-Friday Pacific Time.
Use your VISA or MasterCard



LOGGING FINANCE.COM

OUR NAME SAYS IT ALL!

- ☐ Low Rates
- ☐ Fast Approvals
- ☐ Easy Credit Application

Financing Provided By
**AMERICAN LEASING &
FINANCIAL**

800-644-1182

**WANTED: Bull or High Lead
Logging Block, 18" sheave or
larger also want to buy old axes,
axe heads, spring boards, crosscut
saws and handles Bob 360-687-
1883 or 360-608-2583**

TIMBCO USED PARTS

445 Finals & Motors
Cat 330 & Lohmann GFT80
Stick, Tool & Leveler Cyls
Tested Rad, Poclain Swing
ALL ITEMS INSPECTED
Call Kevin 877-563-8899 or
250-565-5222
khodgins@prolenc.com

**Phoenix Logging is now
hiring for all logging, road
building, and mechanic
positions. Multi-year contract
at remote site on Prince of
Wales Island in SE Alaska.
New land-based camp with
TV, Phones, Internet. Health
care, 401K, top wages +
overtime, and employers
who care. 907-225-2180**

**Tongass Cutting is now
hiring Timber Fallers
w/min 5 yrs experience.
New Land-based camp on
Prince of Wales Island in
Alaska with TV, Phones,
Internet and an employer who
cares. Pay DOE. 907-723-
8977 or 907-225-2180**

**2 Seasoned Veteran
Mechanics for the Timber
Industry Needed in Alaska,
Min 20 YRS experience. Top
money for the industry
907-209-4584**

**40' to 89' (No 70' available)
flat car and box car
bottoms available for
bridges, best prices. 360-426-
8386 fehorse@basicisp.net**

**Deadline for the next issue of
Loggers World Magazine
is November 8, 2017
DON'T MISS IT!**

**Now hiring operators for
skidders, processor, and
feller buncher. Mechanic
also needed. Late model
equipment and year round
work. Long term southern
Colorado job site no further
than 30 miles from town.
Benefits offered. Competitive
wages.**

**For information, email:
jttimberfalling@gmail.com**

WANTED

**Detroit engines 60 series, 12.7
liter DDEC III's & VI's. Also
buying Cummins Big Cam and
N14 Cummins. Will pay cash &
pickup. Call or text 501-772-6005**

FRANK DIAL LOGGING HIRING FULL TIME POSITIONS:

- 1) Contract fallers
 - 2) Truck drivers
 - 3) Equipment operators
 - 4) Laborer/ landing man
- Must have experience,
Apply by Email at
frankdlogging@yahoo.com
or cell: 530-277-0527. Please
leave message with your info.
Location: Nevada City Ca
95959

100% FINANCING

New & Used Equipment
Great Rates
Seasonal Payments Available
Start-Ups Welcome

Threshold Financial
www.thresholdfinancial.net
888-280-9900

THEY ARE BACK! LOGGERS WORLD SUSPENDERS

TRADITIONAL RED
with black letters

Clips or leather ends
available in size 46-50-54,

\$18.50
Pair
(U.S. Funds)

Plus \$7.50 Shipping (Inside USA)
WA Residents pay \$20
including sales Tax

LOGGERS WORLD
P. O. Box 1631,
Chehalis, WA 98532

For Only.....

\$25.00
Per inch

**Show Your Excess
or Idle Iron to
over**

25,000

Buyers!

Use LOGGERS

WORLD'S

IRONMart

CROWLEY EQUIPMENT, INC.

(541) 688-5924 FAX: (541) 688-0704

MIKE (541) 954-7643 • ERIC (541) 206-2252 • DAN (541) 914-9222

4655 Cloudburst Way, Eugene, Oregon 97402



2016 Tigercat LX830D
2,800 Hrs., Tethering Hitch,
Extended Grousers
P.O.R.



2011 John Deere 2454D
W/Pierce 3348
7,600 Hrs.
\$225,000



1996 Diamond D210
\$250,000



**1995 Thunderbird
TSY255**

Tilt Cab, Cat
Engine,
Lohmann
Finals
Eagle
Carraige,
Radios.
**Trades
Welcome!**

LOG LOADERS

- 2015 CAT 325D
- 2012 CAT 324D
- 2011 CAT 324D
- 2008 CAT 330D
- 1997 CAT 322B
- 1985 CAT 225 ON RUBBER
- 2013 DOOSAN DX300LL
- 2015 JOHN DEERE 2954D
- 2014 DEERE 2954D
- 2012 JOHN DEERE 2154D
- 2010 JOHN DEERE 2954D
- 2009 JOHN DEERE 2954D
- 2008 DEERE 2554
- 2008 JOHN DEERE 2054
- 2006 JOHN DEERE 2554
- 2005 JOHN DEERE 3554
- 2004 JOHN DEERE 2054
- 1993 JOHN DEERE 690E
- 2014 HITACHI ZX350
- 2006 HITACHI ZX200
- 2011 KOBELCO SK295
- 2010 KOBELCO SK350
- 2007 KOBELCO SK210
- W/JEWELL TONG THROWER
- 2006 KOBELCO SK210
- 2002 KOBELCO SK330
- 2016 KOMATSU PC240
- 2005 KOMATSU PC300HD
- 1999 KOMATSU PC250
- 2015 LINKBELT 290X2
- 2013 LINKBELT 290X2
- 2007 LINKBELT 370LX
- 2007 LINKBELT 290LX
- 2006 LINKBELT 210LX
- 2005 LINK-BELT 290LX
- 2003 LINKBELT 370LX
- 2000 LINK-BELT 3400Q
- 2000 LINKBELT 3400Q TONG
THROWER
- 1996 LINKBELT 3400Q
- 2015 MADILL 3800C
- 1998 THUNDERBIRD 1240

PROCESSORS & DELIMBERS

- 2003 CAT 322C W/PIERCE 3348
- 2001 CAT 330B LL
W/01 WARATAH 624
- 2015 DOOSAN DX300LL
W/LOGMAX 10000
- 2011 JOHN DEERE 2454D
W/PIERCE 3348
- 2008 JOHN DEERE 2954D W/2010
WARATAH 624C
- 2008 JOHN DEERE 2054 W/622B
- 2007 JOHN DEERE 2554
W/PIERCE 3348
- 2006 JOHN DEERE 2554
W/DM4550
- 2006 JOHN DEERE 2554 RB
W/WARATAH 622B
- 2004 JOHN DEERE 2554
W/DM4400

PROCESSORS & DELIMBERS Cont.

- 2002 JOHN DEERE 230LC
W/DM4400
- 2009 KOBELCO SK260 W/LOG-
MAX 7000XT
- 2006 KOBELCO SK290
W/WARATAH 622B
- 2012 KOMATSU PC200LC-8
W/LOGMAX 7000XT
- 2007 KOMATSU PC270LL
W/WARATAH 622B
- 2013 LINKBELT 240X2 W/PIERCE
3348
- 2006 LINKBELT 240LX W/622B
- 2004 LINKBELT 240LX
W/PIERCE 3348
- 2003 LINKBELT 240LX W/DM4400
- 1997 LINKBELT 3400Q WDM3500
- 2007 MADILL 1800LL
W/WARATAH 622B
- 2005 MADILL 2800B
W/WARATAH 622B
- 2011 TIGERCAT LX830C
W/WARATAH 622B
- FELLER BUNCHERS**
- 2016 CAT 552
- 2015 JOHN DEERE 643L
- 2013 JOHN DEERE 959K
- 2009 JOHN DEERE 959J
- 2015 KOMATSU XT450L-2
- 2013 KOMATSU XT450L-2
- 2016 TIGERCAT LX830D
- 2015 TIGERCAT L870C
- 2009 TIGERCAT LX870C
- 2005 TIGERCAT L870
- 2005 TIGERCAT LX830C
- 2010 TIMBCO 445FXL
- 2008 TIMBCO T475EXL
- 2006 TIMBCO T445EXL W/40°
QUADCO
- 2006 TIMBCO T445EXL
- 2006 TIMBCO T425EXL
- 2003 TIMBCO T445E
- 2002 TIMBCO T425D
- 2011 TIMBERPRO TL735B
W/BARSAW
- 2011 VALMET 450FXL

SKIDDERS / DOZERS

- 2012 CAT 535C
- 2010 CAT 525C
- 2009 CAT 527
- 2003 CAT 527
- 2003 CAT 525B W/ESCO SWING
BOOM
- 2001 CAT 535B
- 2000 CAT 527
- 1999 CAT 525
- 1995 CAT 518
- 1978 CAT D6D W/GRAPPLE
- CAT D8H W/WINCH
- CAT D7F W/ESCO SWING BOOM
- CAT 977L

SKIDDERS / DOZERS Cont.

- 2015 JOHN DEERE 848H
- 2010 JOHN DEERE 848H
- 2006 JOHN DEERE 848G
- 1988 J D 550G W/RIPPERS
- JOHN DEERE 850 W/WINCH
- 2013 TIGERCAT 610C
- (3) TIMBERJACK 380B'S
- 1999 TIMBERJACK 560D

CHIPPERS / GRINDERS

- MORBARK 30RXL
- YARDERS**
- CHRISTY HD YARDER
- DIAMOND D210
- KOLLER K702 ON TRACKS
- (2) KOLLER K602'S
- KOHLER K501
- 1999 MADILL 172
- (2) MADILL 071
- (2) SKAGIT 739
- SKAGIT 737
- THUNDERBIRD 6170
- (2) THUNDERBIRD 6140
- (2) THUNDERBIRD TMY50
- THUNDERBIRD TMY-40
- THUNDERBIRD TSY-6240
- THUNDERBIRD TSY255
- THUNDERBIRD TY90
- THUNDERBIRD TY-40
- 1995 THUNDERBIRD TTY70

EXCAVATORS

- 2013 CAT 325D RB
- 2009 CAT 330D W/SUMMIT
TETHERING SYSTEM
- 2014 DEERE 2154D RB
- 2006 CAT 320C RB
- 2005 DEERE 3554 RB
- 2005 HITACHI ZX200 LONG
REACH
- 1996 HITACHI EX270
- 2003 KOBELCO SK210LC RB
- 2006 LINKBELT 370LX RB

MISCELLANEOUS

- 2007 CAT 140H
- CAT 977L
- EXC. HEEL/GRAPPLE
- 2016 FECON BH80
- 2007 FECON BH80HD
- MEDFORD LOG FORKS
- 2005 TIMBERJACK 1410
- 2008 TIMBERPRO TF840
- 2001 TIMBERPRO TF820E
- 2006 VALMET 890.3
- 2007 WARATAH 624
- 2006 WARATAH 622B
- PARTING OUT**
- 2003 JOHN DEERE 230 W/PIERCE
3348
- 2005 HITACHI ZX250 LL
- LINKBELT 210LX BOOM
- THUNDERBIRD TSY-155



2007 Kobelco SK210
W/Jewell Tong Thrower,
12,000 Hrs.
P.O.R.



(2) 2012 Cat 324D's
10,000 - 12,000 Hrs.
Call For More Info.



2012 John Deere 2154D
9,100 Hrs.
P.O.R.



2011 Tigercat LX830C
W/Waratah 622B
8,000 Hrs.,
P.O.R.

www.crowleyequipment.com



2015 Link-Belt 290X2
5,200 Hrs.,
P.O.R.



2009 Cat 330D
W/2017 Summit Tethering System
Call For More Info.



2009 Kobelco SK260LL,
10,400 Hrs., W/2010 LogMax
7000XT 8,600 Hrs.
\$145,000



2005 John Deere 3554
8,900 Hrs., Just line bored en-
tire boom, Would make a great
base for a tethering machine,
\$90,000



2003 Cat 527
\$175,000

SHOW AND SELL

Send your Black and White or Color photo and a description of what you are selling (try to keep it within 20 words - 1 item per ad) and we'll publish it in Show & Sell for just \$125.00. Mail (or email to logworld@aol.com) your information to Loggers World LLC, P.O. Box 1631, Chehalis, WA 98532. Deadline is 5th of the month preceeding publication.

ADVERTISE

YOUR ITEM IN THIS SPACE

\$125⁰⁰

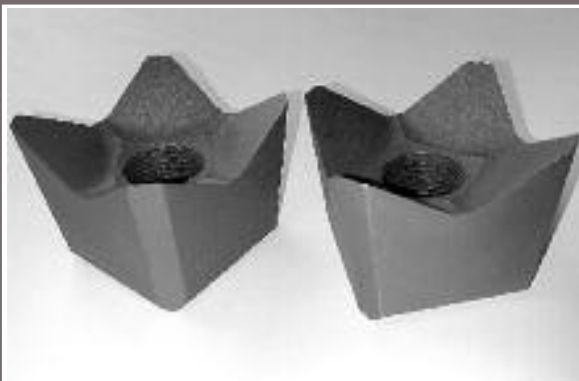
CALL 1-800-462-8283

SPECIAL DEAL:

Get your ad for

\$110⁰⁰ if you buy it
on our website:

www.loggersworld.com



Hot Saw Teeth, Replaces Quadco part # Q10233T 2-5/16 with a 1 inch bolt. **\$15 EACH** Can ship any place in the USA for \$15 dollars a box, Call Jim Riendeau 603-915-0623 E



2014 Hitachi Forester, Like New 2,462 Hrs, 2X370F Log Loader, 43' Log Loader Front, 66" Young Grapples, UC Hi-Wide 9' 7" Gauge, Dual Swing Motors, Long Life Zink Free Oil, OSHA Certified Guarding, Rear Entry Cab, A/C, Call Tim at (360)532-1485 F



2005
Waratah 622
Processor w/Filter
Box and Computer
System, Serial
#622552
\$25,000
(509) 884-7117 E

ADVERTISE

YOUR ITEM IN THIS SPACE

\$125⁰⁰

CALL 1-800-462-8283

SPECIAL DEAL:

Get your ad for

\$110⁰⁰ if you buy it
on our website:

www.loggersworld.com



2011 John Deere 3754D, Log Shovel 7,380 Hrs, Great Value, Well Maintained, 43' Log Loader Front, 63" Jewell Grapples, H.D. 450 Size Undercarriage, Side Entry Forestry Certified OSHA, Dual Swing Motors, A/C, Call Tim at (360)532-1485 F



Waratah HTH 20 with top saw, large feed wheels, 3/4" butt saw, approx 4,000 hrs, lots of new parts, complete with computer controls & computer **\$15,000 OBO** 541-659-4303 leave a clear message or I can't call you back. E

6140 Thunderbird
Swing Yarder,
all lines & rigging,
whistles, new gear
and bearings 18 mos
ago, Super Eaglet
Carriage **\$332,000**
(360) 470-1535 E



ADVERTISE

YOUR ITEM IN THIS SPACE

\$125⁰⁰

CALL 1-800-462-8283

SPECIAL DEAL:

Get your ad for

\$110⁰⁰ if you buy it
on our website:

www.loggersworld.com



'15 Cat 552 (#F7G00199) w/26" (360) Quadco. SMR: 2K, Fire damages to "machinery platform", Car body, undercarriage, booms, head, etc., ok., Many salvageable components. Locality: Salem (OR)., Additional photos & inspection site on request. Accepting offers. Contact: kwinc@centurytel.net E

ADVERTISE

YOUR ITEM IN THIS SPACE

\$125⁰⁰

CALL 1-800-462-8283

SPECIAL DEAL:

Get your ad for

\$110⁰⁰ if you buy it
on our website:

www.loggersworld.com



The Old Man is 80 and says SELL IT!! Portable Chip Blower, Salvage Chips from wrecked or Disabled trucks puts them in another trailer. Call with questions. **\$7,500 OBO Or Trade ?????** 541-849-3278 E

COMING EVENTS

NOVEMBER

6-8



108th ANNUAL CONVENTION
PACIFIC LOGGING CONGRESS
THE SCOTTSDALE PLAZA RESORT
SCOTTSDALE, AZ

FOR INFORMATION: (360) 832-1745

10



**FOREST PRACTICES
UPDATE SEMINAR**

6PM TO 9PM

BEST WESTERN BOULDER FALLS INN
LEBANON, OREGON

FOR INFORMATION CALL: (503) 364-1330

18



**AOL STATE WIDE
SAFETY CONFERENCE**

BEST WESTERN BOULDER FALLS INN
LEBANON, OREGON

FOR INFORMATION CALL: (503) 364-1330

JANUARY

16-18



ANNUAL MEETING
**ASSOCIATED CALIFORNIA
LOGGERS**

ATLANTIS CASINO RESORT SPA
RENO, NEVADA

FOR INFORMATION CALL: (916) 441-7940

SEND EVENT NOTICES TO: Publisher, Loggers World Magazine, P. O. Box 1631, Chehalis, WA 98532-8425. Please include your event's symbol. Items used at discretion of the publisher.

Deadline for December 2017 issue: NOVEMBER 8th.

Advertiser's Index

ACME MANUFACTURING	16	MADSEN'S SHOP & SUPPLY, INC.....	6
CASCADE TRADER	5	MECHANICAL DESIGN INC.	18
CC HEAVY EQUIPMENT INC.	7	MPI EQUIPMENT	9
COWLITZ RIVER RIGGING.....	14	OLIVER HAMMER CLOTHES SHOP.....	7
CROWLEY EQUIPMENT INC	27	PACIFIC FIBRE PRODUCTS, INC.	7
CT MUSIC.....	24	PAPAC ALASKA LOGGING.....	21
DUKE'S EQUIPMENT	17	PERSONS ENTERPRISES ..	23
EAGLE CARRIAGE & MACHINE INC.....	10	ROTHENBUHLER ENGINEERING.....	19
FEENAUGHTY MACHINERY Co	13	SCHAEFER ENTERPRISES	19
FRALEY TRACTOR, INC	8	SCHMUNK'S TIRE CENTER, INC.	17
FULL CIRCLE FINANCE....	6	SHOW & SELL.....	28
GEM.....	11	TERRY AKINS	12
HIGH CASCADES AGENCY	10	TRIAD MACHINERY.....	14
KOVASH LOGGING LTD...21		TRIPLE T EQUIPMENT ...	26
LOCK & LUBE.....	13	WALLINGFORD'S INC.	13
LOGGERS WORLD IRONMART	26	WARATAH FORESTRY ATTACHMENTS.....	3
LOGGERS WORLD SUBSCRIPTION	29	WASHINGTON CONTRACT LOGGERS ASSOC.....	23
LOGGERS WORLD SUSPENDERS	25	ZENDER EQUIPMENT	15

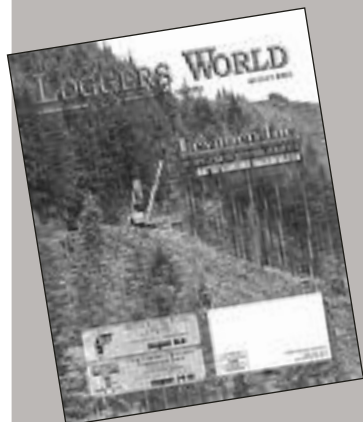
SUBSCRIBE TODAY! LOGGERS WORLD

*"The Logger's Magazine," is
concerned with what
concerns loggers*

12 Issues – 1 Year Subscription

\$25⁰⁰

WA Residents pay \$27.40 w/tax
Inside U.S.A.



SUBSCRIPTIONS

Make Excellent Christmas Presents!

Send your check or Money order to:

LOGGERS WORLD LLC
P. O. Box 1631
CHEHALIS, WA 98532



Offer Expires
January 31, 2018

☐ \$25.00 for 1-Year Subscription ☐ \$50.00 for 2-Year Subscription
☐ \$100.00 for 4-Year Subscription

WASHINGTON RESIDENTS PAY \$27.40, \$54.80 OR \$109.60 w/SALES TAX

NAME:.....

ADDRESS:.....

CITY:..... STATE:..... ZIP:.....

PHONE: ().....

(ALLOW 5 WEEKS FOR DELIVERY OF FIRST ISSUE)

They're Santa Approved!