

# LOGGERS WORLD

VOLUME 53 NUMBER 2

To Advertise Call: (800) 462-8283

FEBRUARY 2018

*B & M  
Logging  
inc.*

**Chehalis, WA**



**February 8-10**

**2018 SIERRA CASCADE  
FOREST PRODUCTS &  
CONSTRUCTION EQUIP. EXPO**  
SHASTA DISTRICT FAIRGROUNDS  
ANDERSON, CALIF



**February 22-24**

**2018 OREGON LOGGING  
CONFERENCE**  
LANE COUNTY CONVENTION CENTER  
AND FAIRGROUNDS  
EUGENE, OREGON

PRST STD  
U.S. POSTAGE  
PAID  
PERMIT NO. 178  
SALEM, OR

LOGGERS WORLD LLC  
P. O. BOX 1631  
CHEHALIS, WA 98532-8425



# POWERFUL. FAST. AND EVERYTHING IN BETWEEN.



A Waratah built to perfectly match the 25-ton carrier class? It's here. The new HTH623C matches robust brute power with the speed, agility, and skill required to process larger wood. With its high-torque feed motors and the latest hydraulic valve design, the 623C pours on the feed force and delimbing power while striking a precise balance of feed speed. And like all our heads, the HTH623C is backed by the best support team in the business. Get the perfect match between head and harvester, and get a ton of work out of your 25-ton carrier.

[www.Waratah.com](http://www.Waratah.com)

Waratah Kelso, Washington  
+1 (360) 636-2950

Waratah Atlanta, Georgia  
+1 (770) 692-0380

 **waratah**  
BUILT TO WORK



558/558 LL FOREST MACHINE

# MORE LOADS PER DAY

## WITH SWING TORQUE AND HORSEPOWER TO SPARE

### BUILT FOR IT.™

### POWERFUL LOGGING SOLUTIONS



**KNUCKLEBOOM  
LOADERS**



**SKIDDERS**



**FOREST  
MACHINES**



**WHEEL FELLER  
BUNCHERS**



**TRACK  
HARVESTERS**



**TRACK FELLER  
BUNCHERS**

Our goal is to help you move more loads at a lower cost. The all new 558/558 LL is redefining forestry machine performance, through improved power, efficiency, operator comfort and an optimized work tool system. Key features include:

- Increased engine horsepower and swing torque add power and boost performance under load
- Component layout, back-to-back main hydraulic control valves and engine speed control maximize efficiency
- Cooling capacity increased 33 percent for trouble-free operation
- New premium rear entry cab and side entry cab enhancements improve operator experience

Look to your Cat® dealer for financing and all the machines you need for sustainable harvesting and land management, forestry road construction, hauling and millyard. Total support from one source.

[www.cat.com/forestry](http://www.cat.com/forestry)



[www.cashmanequipment.com](http://www.cashmanequipment.com)  
Nevada and Eastern Sierra  
800-937-2326



[www.holtca.com](http://www.holtca.com)  
Central Northern California  
800-452-5888



[www.ncmachinery.com](http://www.ncmachinery.com)  
Western and Central Washington  
800.562.4735 and  
Alaska 800.478.7000



[www.petersoncat.com](http://www.petersoncat.com)  
Northern California, Western  
Oregon and Southwestern  
Washington  
800-452-7676



[www.westernstatescat.com](http://www.westernstatescat.com)  
Idaho, Western Montana, Eastern  
Washington, Eastern Oregon and  
Northwest Wyoming  
800-852-2287



# Finley's Rigging Shack

"Classic"



*Originally Printed in  
July 1981*

## "DESIRE"

In March Loggers World the title of Rigging Shack was 'Upon Being a Success'. We said, "Success is the progress toward your own personal and worthwhile Goals."

In April Loggers World the subject was, "SETTING GOALS". Setting Goals is the strongest motivating tool known to man and all people set goals. In this column we quoted Napoleon Hill: "Whatever the mind of man can conceive he can achieve."

Next month the discussion was about 'Plans and Planning'. The idea being that plans are necessary to achievement and that plans must be flexible to compensate for changing conditions.

In last month's Loggers World we talked of the importance of Pictures. "You become what you concentrate upon. There is no doubt that picturizing and visualizing what you want brings it to you."

To review let us agree that we know what being a Success means to each of us personally. Success is a personal thing and it

should be. We have then picked out what we wanted to do and what we want to reach and to own. That is our Goal; or Goals.

Since we have a goal we have then laid plans on how to achieve that goal or those goals.

We have detoured so that we can talk about 'Pictures'. The reason for understanding pictures is that we must be able to picture what we want, we must bring our goals to life thru pictures. Good sharp realistic pictures will make attaining the goal more certain.

This month the key word is 'DESIRE'.

There is a lot of different pictures that comes to different minds at this word Desire. What we expressly are talking about here is "How much do you desire your goal?"

Let us pick something tangible and concrete to use as a Goal example. Let us say your goal is to purchase a new car, a small car that costs about \$7,000.00. Your deadline is to save \$7,000.00 in 18 months and the obstacles in the road from you to the realization of your car is mostly one of money. Your plan calls for you to save \$7,000.00 in 18 months. The way to make a goal believable is to break down the total into sums you can han-

dle. For instance to save \$7,000.00 in 18 months you must save \$388.88 per month or you must save \$12.96 each day of each month (30 day month.)

Okay let's say you can save about \$6.00 a day out of your salary as it is now. You have \$7.00 more to acquire per day. Now let's suppose that can save another \$3.00 per day by doing without some of the things you have and do normally --- you can save \$3.00 per day by doing without some of your usual luxuries. That still leaves \$4.00 per day we are short.

Back thru the list of where you spend your money and you find by paring down more yet you can save another dollar a day. So now we are \$3.00 per day short.

Your most sensible way to solve this problem may be to find a part time job that will make you another \$25.00 or so a week.

These things totaled together will make it possible for you to save \$7,000.00 in 18 months and pay cash for your new car.

In order to do this you will have to work every Friday night and Saturday on your new part time job for the next 18 months. This means you are going to miss a lot of companionship, a lot of fun and a lot of good things you have enjoyed in the past. When you save \$4.00 per day out of your budget this means you are giving up more things, things that you enjoy and value.

It all means that you give up much, work during what used to be fun time, give up some get togethers, quit taking those short vacations, cut out your bowling



FINLEY HAYS

and cut down on your golf and live a life much simplified.

After your plans are made and your paper work is completed and you are sitting at the table surrounded by scattered out paper work the picture looks less than enjoyable.

That is the time to ask the Question: "Is my Goal worth what it will cost me?"

Don't put this question off too easily. You must ask the question and you must dredge up the right answer. This is the time to make the commitment or to discard the goal. From now on you must either be committed or forget it.

This is the time that you have searched for knowledge, made your plans, talked to others and have worried and worried and dealt with uncertainties. Once you decide to go ahead you are not allowed the luxury of worry again. You do it all and leave it right here. From now on worry is death --- instead of bringing your goal closer it will push it away farther and farther. So do all your worrying before you commit yourself to the goal and then never allow yourself the luxury of worry again. You can't afford that luxury of worry, it costs more than you can afford.

This is the time that there is a big pull to throw away the papers to give up on the dream, to scuttle the goal and to discard the plans. It is attractive to slip into older and easier ways and to be satisfied with less than your best.

(Continued on Page 31)  
**See "Rigging Shack"**

## IN THIS ISSUE



**ON THE FRONT:** B&M Logging's Matt Davis moves a couple of tree lengths with their new Doosan DX380LL from Cascade Trader.

See "Mint City Loggers" starting on Page 6

### 2. RIGGING SHACK

"Classic" From July 1981 by Finley Hays

### 6. MINT CITY LOGGERS

B&M LOGGING by Brandon Hansen

### 26. AS WE SEE IT

### 27. SUMMARY JUDGEMENT

ON LAND POWERS: TRUMP MUST TELL HIS LAWYERS "STAND DOWN"

by William Perry Pendley

### 25. BLAST FROM THE PAST

BY QUINN J. MURK FOR LOGGERS WORLD

### 32. IRON MART

### 34. SHOW AND SELL

## LOGGERS WORLD

Published by LOGGERS WORLD LLC

Founded in 1964 by Finley Hays

Phone (360) 262-3376



Member and Supporter of the  
American Loggers Council Since 1994



PUBLISHERS.....Kevin & Nancy Core

EDITORS EMERITI.....Finley Hays, Mike Crouse

EDITOR/WRITER.....Brandon Hansen

ADVERTISING.....Kevin Core

OFFICE MANAGER.....Nancy Core

POSTMASTER: Send address changes to:

LOGGERS WORLD LLC,  
P. O. Box 1631, Chehalis, WA 98532-8425

E-Mail: [logworld@aol.com](mailto:logworld@aol.com)

SUBSCRIPTION RATE (In U.S.A.):  
\$25.00 per year; Two years for \$50.00

LOGGERS WORLD LLC cannot and does not assume responsibility for the contents of any advertising in Loggers World. The representations made by advertising is the responsibility of the advertiser and not Loggers World. Loggers World does not knowingly accept advertising that is false or misleading. The limit of Loggers World liability in case of a mistake made in advertising copy by Loggers World will be the charge of the actual space containing the error or less for that particular advertisement



**DOOSAN****Authorized Dealer**

Sales, Parts & Service  
Your #1 Established Forestry Equipment Dealer

**Cascade Trader has a  
Complete Line of new  
Doosan Log Loaders, Excavators  
& Wheel Loaders for your  
Logging & Construction Needs!**

**Cascade TRADER inc.**  
EQUIPMENT SALES - LOGGING & CONSTRUCTION



**Ask  
About Our  
Special Financing:  
Up to 60 Months**

All offers  
subject to credit approval



**THUNDERBIRD** Yarder TTY-70,  
Track Mt, Excellent .....\$410,000



**Doosan DX300LL-5 Log Loader,  
NEW IN STOCK**



**Tigercat 880 Log Loader, Single  
Bar Grousers, low hours.....P.O.R.**



**Doosan DL420-5 Wheel Loader,  
NEW IN STOCK**



**DOOSAN DX85R Excavator  
New Inventory**



**Doosan DL350-5 Wheel Loader,  
4.5 yd, low hours.....POR**



**DX300LC-5 Excavator  
NEW INVENTORY**

**LOG LOADERS**

CAT 235C Log Loader, Pierce Boom.....	\$17,500
CAT 568 Log Loader, 2012.....	POR
DOOSAN DX225LL Log Loader, low hrs.....	\$172,500
DOOSAN DX300LL Log Loader.....	\$109,500
DOOSAN DX300LL-5 Log Loader, low hrs.....	\$289,000
DOOSAN S300LL Log Loader.....	\$85,000
HITACHI EX200LC Log Loader.....	\$29,500
HYUNDAI 320LC-9 Log Loader, clean.....	\$145,000
HYUNDAI 320LC-9 Log Loader, low hours.....	\$225,000
JOHN DEERE 200LC Logger, Forestry Cab.....	\$59,500
JOHN DEERE 2554LL.....	\$125,000
JOHN DEERE 2954LL Log Loader.....	POR
JOHN DEERE 3554 Log Loader.....	\$69,500
KOBELCO SK200LC Log Loader.....	POR
KOBELCO SK210LC Log Loader.....	\$64,500
KOBELCO SK220LC Log Loader.....	\$35,000
KOBELCO SK260LC Log Loader, For Cab.....	\$125,000
KOBELCO SK290LC Log Loader.....	\$35,000
KOBELCO 295LL (2009) Log Loader.....	\$165,000
KOMATSU PC300HD Log Loader.....	\$37,500
LINKBELT 290LX Log Loader.....	POR
PRENTICE 610 Log Loader, KW Truck Mt.....	\$29,500
THUNDERBIRD 1238 Log Loader.....	\$39,500
TIGERCAT LH855 Levelling LL, Grapple.....	\$289,500
TIGERCAT 880LL Log Ldr, Sgl bar grousers.....	POR

**FELLER BUNCHERS, PROCESSORS**

CAT 330BLL Log Loader/KETO 800.....	\$39,500
DOOSAN DX225LL/Waratah HTH622B.....	\$134,500
HAHN Harvester, HTH300, 3-Axle SP.....	\$19,500
JOHNDEERE 2054/Waratah HTH622B.....	\$119,500
JOHNDEERE 3554LL/Waratah HTH624C.....	\$149,500
JOHNDEERE 792D/Pierce 3345 Stroker.....	\$59,500
KOBELCO SK290LCCLL, Rear entry,Keto 800.....	\$125,000
KOMATSU PC128/LogMax sm. Wood Harvester.....	\$39,500
KOMATSU PC220LC/Pierce 3348 Stroker.....	\$119,500
KOMATSU 450XTFB/Quadco 24" 360.....	\$275,000
MADILL 2800/Denharco DM3500.....	POR
THUNDERBIRD 1236/Denharco DM3500.....	POR
TIGERCAT L870C/5702- 360 rotate.....	\$110,000
TIMBERJACK 2628, Bar Saw.....	\$29,500
TIMBERJACK 608L, Koehring 20" Disc Saw.....	\$45,000
WARATAH HTH-623C, NEW Inventory.....	POR

**TOWERS & YARDERS**

CHRISTY Yarder, Truck mount.....	\$49,500
HITACHI EX200/Dual Drum "Escaliner" Yarder.....	POR
KOBELCO SK300LL "Yoder", Dual Pullmasters.....	\$129,500

KOLLER K501 Yarder, Trlr Mnt, reduced.....	\$44,500
MADILL 071, 3-Guys, 8V71GM, recent work.....	\$85,000
MADILL 071, 4-Guys, 8V71, w/Rigging.....	\$107,500
MADILL 071, 4-Guys, 8V71T,fresh paint,nice.....	\$135,000
PSY-200, Self-Propelled, nice yarder.....	\$199,500
SKAGIT BU-80C,T-90 Trailer Mount.....	\$32,500
SKAGIT GT3 Swing Yarder, Track Mnt.....	\$89,500
THUNDERBIRD 6140 Swing Yarder, nice.....	POR
THUNDERBIRD TTY70 Track, reduced.....	\$410,000
WASHINGTON 78-40 Swing Yarder.....	\$42,500
WASHINGTON 127W, T90, Trailer Mnt.....	\$29,500
WASHINGTON 137W Slackline, T90, reduced.....	\$139,500
WASHINGTON TL6 Trakloader, SP, 50' Boom.....	\$35,000

**EXCAVATORS/DOZERS/GRADERS  
WHEEL LOADERS/SKIDDERS**

CASE CX160B, Pin Grabber, Thumb, Buckets.....	\$59,500
CAT 14E Grader.....	\$14,500
CAT EL240B Excavator.....	\$19,500
DOOSAN DX140LC Excavator.....	\$49,500
DOOSAN DX180LC Excavator.....	POR
DOOSAN DL400 Wheel Loader.....	POR
FIAT-ALLIS 8, Winch/Arch, recent work.....	\$19,500
GARRETT 25 Skidder, Cummins.....	\$12,500
JOHN DEERE 160D Excavator, Bkt, Thumb.....	\$84,500
JOHN DEERE 200D Excavator.....	\$45,000
JOHN DEERE 2454"Rd Bldr" ,Excav, low hrs.....	\$250,000
KOMATSU WA500-7, GP Bucket.....	POR
LINKBELT 3900Q Excavator, Bucket/Thumb.....	\$27,500
MADILL RB500 (180 size) Excav, guards.....	\$45,000
MOUNTAIN Logger ML150, GM, Clark Winch.....	\$16,500
MOUNTAIN Logger ML150, Cummins.....	\$12,000
TIMBERJACK 404 Skidder.....	\$8,950

**CARRIAGES & MISC**

ACME 15 Slackpulling Carriage, recent work.....	\$24,500
BOWMAN Mark V, recent work.....	\$35,000
CEC Portable Jaw Crusher, Trailer Mnt.....	\$85,000
CTR 314SCD Pull Thru Delimber.....	\$15,500
DANZCO PT20 Pull Thru Delimber.....	\$10,500
DIAMOND Z 1460 Tub Grinder, 2010.....	\$289,500
GENERAL 60T Lowboy '08, 9' wide, 24' deck.....	POR
LOAD KING 60T Lowboy, 9' wide, 24' deck.....	\$49,500
MORBARK 30RXL Chiparvestor. Cat 3412.....	\$110,000
PETERSON 5900EL Disc Chipr, 765HP, low hr.....	\$265,000
TRAILMAX Tilt Trailer, 3-axle, 27T.....	\$19,500
TURKEY RACK.....	\$6,950

**TRUCKS**

KW Log Trucks, details on request.....	POR
--	-----



**DOOSAN Log Loaders  
LOTS OF INVENTORY!**



**Doosan DX225LL-5 "Road  
Builder".....P.O.R.**



**WASHINGTON 137W Slackline  
Yarder, excellent!.....\$139,500**

**KETO • WARATAH • SOUTHSTAR • EAGLE CARRIAGE**

Rich Lennox (360) 508-0192  
John Welch (360) 520-2082  
Shannon Pesicka (360) 507-0542

Mike Duch (360) 880-6955  
Jim Wark (360) 623-5219  
Cooper Brunoff (360) 880-7534

John Griffin (425) 210-9702  
Tony Foglio (360) 520-7084

Bill Pantier • Doosan Parts: (360) 508-6294 Cell  
Traci Brunoff • Sales Coordinator: (360) 880-7531

[www.cascadetrader.net](http://www.cascadetrader.net)

Find us on  
**Facebook**

**(360) 748-1182**

fax (360) 748-1198 •  
Located at Exit 79 off I-5  
1380 NW State Ave., Chehalis, WA 98532



# MINT CITY LOGGERS

## TOWERING ABOVE

The Skagit 739-Boman carriage combo lands a turn on B&M's Vail side. The Doosan 225/Waratah 622C stands ready to go to work once the chaser unlatches the chokers.

*B&M Logging runs several sides out of Chehalis, WA with a great group of employees*

**Photos by Kevin Core**  
**Story by Brandon Hansen**  
*For Loggers World*

It started with a skidder. Brandon and Matt Smith struck out on their own in March of 1992, doing some work for Port Blakely. Estab-

lishing B&M Logging in Chehalis, Washington, the company today has six sides and 18 trucks with roughly 90 employees working for them.

"We enjoy working with our employees, watching their families grow and we have a lot of good men, loyal employees working for us," Brandon Smith said.

The history of logging and Chehalis are intertwined as it's the county seat of rural Lewis County. It began as a settlement around a warehouse by a railroad in 1873.

(Continued on Page 11)  
**See "B&M"**

## BRANDON AND MATT SMITH

Brothers Brandon (left) and Matt (right) Smith are the owners of B&M Logging Inc. These busy guys are quick to say they appreciate the good employees they have that keep everything humming.



**EDITOR'S NOTE:**  
Loggers World was only able to visit two sides for B&M. There are many more loggers and drivers in the company and we apologize for not being able to squeeze all 90 employees in!





## CHEHALIS WASHINGTON

**Chehalis** is the county seat of **Lewis County** with a population of 7,391 people. Formed as a settlement in 1873 when the railroad came through, Chehalis is now on busy I-5. It's known as the "**Mint City**" as the mint factory in town gives off a nice smell when you're headed into town.

### B&M LOGGING

**B&M Logging** is in Chehalis, Washington. The company today has six sides and 18 trucks with roughly **90 employees** working for them. The company primarily operates within two hours of **Chehalis** - which is in the central part of western Washington, conveniently along Interstate 5. They log in east **Lewis County** areas like **Morton** and **Packwood** and go as far west as **Menlo** while logging as south as **Cougar**. They cut their teeth with the company in the **Capitol State Forest** near **Olympia** and still operates in the area as well.

HARVESTER BARS - RIM SPROCKETS - REPLACEMENT TIPS - MEASURING WHEELS - BAR REPAIR - CHAIN - CHAIN LOOPS

"Absolutely love this bar on the landing!  
It is more bend resistant than other bars  
and had no rail wear."  
- Steve Henderson  
Owner, Pine Creek Logging

**GEM**  
*Chain Bar*  
**MAXIMIZE YOUR RUNTIME**

ADVANCED TECHNOLOGY . EXTENSIVE FIELD TESTING . CUTTING-EDGE MATERIALS . UNMATCHED DURABILITY

In 1989, loggers established GEM with a vision of quality, readily available products for the developing mechanical harvester industry. GEM still works closely with loggers through extensive field testing and design input, continuously creating innovative, durable products. Real people who really listen, a big part of the GEM difference. Combining real world input with advanced manufacturing methods and cutting-edge materials, GEM helps you maximize your runtime with the highest quality and best technology at reasonable prices.

800-455-8471 - sales@gemchainbar.com - www.gemchainbar.com

OLC 2018 EXHIBIT HALL BOOTHS 300, 301, 303





### MATT DAVIS ON THE DOOSAN DX380LL

Matt Davis swings a tree length log with B&M's new Doosan DX380LL. Matt said the Doosan DX380LL has plenty of power. Matt is one of those "do anything" kind of guys that can fill in just about anywhere.



## Free Ball Cap

While supply lasts, get a 100' of OREGON® 3/8" square-ground chisel saw chain for only:

# \$279



Plus, mention this ad and we'll throw in a FREE collector's ball cap with your roll of chain.

Get yours today!

**MADSEN'S**  
SHOP & SUPPLY INC.  
Centralia, Washington

☎ 360-736-1336  
Information Calls  
☎ 800-822-2808  
Direct Order Line  
[www.madsens1.com](http://www.madsens1.com)



## Need Financing? We Can Help!

We Finance Loaders, Trucks, Skidders, Trailers, etc.

- Working capital available
- Start-up program for under 2 years available
- 1st payment only
- 3,4,5 year financing
- 150K application only
- Finance any equipment or attachment...no age requirement
- Personal one on one financing process
- 27 years' experience in the financing Industry

*Isn't it time you made an investment in your machinery?*

**Call Doug Powell Today!**

**888-223-2600 • [dee@fullcirclellc.us](mailto:dee@fullcirclellc.us)**

**After hours cell: 509-393-5111**

11 Spokane Street - Suite 306, Wenatchee, WA 98801 • [www.fullcirclellc.us](http://www.fullcirclellc.us)





# CC HEAVY EQUIPMENT



2006 Kobelco 210 Log Loader, 17,800 hrs., Forestry Cab, Jewell Boom and Grapple, New UC, All New lexan windows, New sound system in cab, New front and rear LED lights, Very Clean! .....  
.....NEW PRICE! \$79,000



2004 Kobelco SK330LC Shovel Logger Extreme, Jewell Grapple, 12,346 Hrs., Mitsubishi Engine, U/C 70%+, Tight Boom & Rotex, Excellent Condition! .....\$119,000



1997 CAT 322 CL Processor Machine, 19,000 Hrs., Log Max 7000 Head. Hyd Pump has 5,000 Hrs., SureGrip Controls, New Injectors and Lines Recently, \$6,000 Just Invested Into New Logmax Computer and Measuring Sensors. Ready To Work! .....  
.....NEW PRICE! \$85,000



Thunderbird TSY-255, 5,467 Hrs., 3 Guylines, U/C 75%+, Detroit Power, Hours 5467 (4 Place Meter), Job Ready! \$550,000



1995 John Deere 792 Log Loader, 52" Young Grapple, 22,770 Hrs., Out of Frame OH Engine With 1,500 Hrs., Recent U/C 80%+, Excellent Condition, Watch it Work! ...  
.....\$55,000



2015 John Deere 1050K Dozer, 1,134 hours, Like New! Semi U Blade, 4 barrel Triple Shank Ripper. Enclosed Cab, Heat, A/C. LED Work Lights. Very Nice Machine!.....\$519,000



2012 Kobelco 295 Shovel Logger, Summit Package, Yoder, 4,800 Hrs., New Tong Tosser, Radios, Lines. Carriage Available at Extra Cost .NEW PRICE!..\$350,000



1995 Kobelco SK 50UR Mini Excavator, 2,540 Hrs., Comes With Thumb & 3 Buckets- 42" Clean Up, 24" Dig, & 12" Dig, Boom Has Side Shift. Will Need Diverter Valve Added to Utilize Both Thumb & Side Shift, Computer Replaced 348 Hrs. Ago, Good U/C 70%+, Ready To Go! .....  
.....\$22,500



2002 Case CX 330 Excavator, 9,687 Hrs., Geith Bucket Shop Built Hydraulic Thumb, U/C 80%+, Triple Bar Grousers, 78K Weight, Nice, Tight Machine!...NEW PRICE! .....\$67,500



1988 CAT 235B Yoder, Two Pullmaster Dash 4, 2 Speed Drums, Hyd. Guyline, All New Lines, ACME 10 Skycar, Radios, 3306 Economical Approx. 40 gallons per day, 2100' 9/16" Skidline, 1500' 5/8" Skyline, 250' 3/4 Guyline, 128,000 lbs., Trades Possible .....\$120,000



2012 Kobelco SK 260-8 Log Loader, 9,400 Hrs., Pierce Boom and Grapple, Recent U/C and New Seat .....  
.....NEW PRICE! ..\$110,000



2005 CAT 517 Swinger, 9,300 Hrs., Good U/C, New Snubber, Trans and Torque, Recently Tested by CAT, Runs Great!.....  
.....NEW PRICE! \$158,000



**TAJFUN**

**WE SELL TAJFUN (TYPHOON) FIREWOOD PROCESSORS**



2011 John Deere 959K Feller Buncher, 9,182 Hrs., JD/FR24B Head, Cab W/AC, Wide Pads, U/C 40-50%+.....  
.....\$105,000



2006 Tigercat 630C Skidder, 11,274 Hrs., New Hydrostatic Drives, Rebuilt Grapple, Snubber, Brakes, Rebuilt Arch and Boom Cylinders..\$85,000



2012 Link-Belt 290 X2 Log Loader, Less Than 11,000 Hrs., New U/C With 1,200 Hrs.....\$195,000



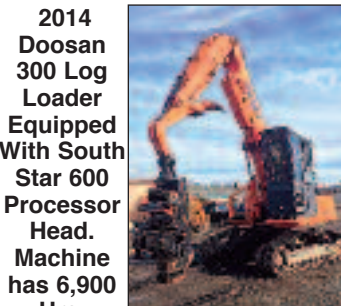
2008 Link-Belt 210 LX Log Loader, 52" Pierce Grapple, 13,662 Hrs., U/C 60%+, Very Clean Machine!.....\$89,000



1985 Case 850D Dozer With Winch and Arch, U/C 70%+ .....\$29,000



2017 Tajfun Firewood Processor, 3 Power Options-Tractor PTO, Skidsteer Hydraulic, Koller Gas Engine, Mobile Platform, Call for Catalog Starting at \$35,000



2014 Doosan 300 Log Loader Equipped With South Star 600 Processor Head. Machine has 6,900 Hrs. Head only has 3,500 Hrs. on it  
NEW PRICE \$327,500



1992 Kenworth T800 Log Truck / 1984 Peerless Log Trailer. Rebuilt N14 60k ago, 15 Speed, New Turbo, Rebuilt Injector Pump, New Radiator, New Clutch, New Rear Seal, SI Scales. 70%+ Rubber on Steers & Drives. Frame Has 1,048,000 miles.....NEW PRICE!..\$29,000



**CCHEAVYEQUIPMENT.COM**

Dallas/Salem Rickreall, OR

Carl Cornthwaite • 503-507-7230 • carl@ccheavyequipment.com  
Lincoln Cornthwaite • 971-901-1333 • lincoln@ccheavyequipment.com



PACIFIC FIBRE PRODUCTS

**WANTED**

Alder, Maple, Douglas Fir, Cedar  
Hemlock, Cottonwood  
PULP LOGS

Land & Timber or Timber Only  
Paul Hadaller • 360-431-9661

Rob Vance • 360-355-2817

P.O. Box 278, 20 Fibre Way, Longview, WA.  
Office: 360-577-7112

**WE ARE NOW PURCHASING  
LOGS IN MOLALLA, OREGON!**

**END GREASING  
FRUSTRATION**



**GREASE GOES IN,  
NOT ON, THE MACHINE**

LOCKNLUBE.COM | 603.795.2298

*Oliver-Hammer  
Clothes Shop*

**Clothing the  
Working Man for  
97 Years**

Wesco Caulk Boots, Redwing,  
Carolina, Carhartt, North Star  
Gloves, Hickory Shirts,  
Logger "Riggin" Jeans and a  
Whole Lot More

**(360) 855-0395**

821 Metcalf,  
Sedro Woolley, WA 98284



## PUTTING ON WRAPPERS

Heath Shanklin looks on as driver Dave Ivey puts the finishing touches on wrapping up the load on the 2017 Western Star he drives for B&M Logging.



# ATTENTION LOGGERS!

## WET WEATHER CAUSING YOU PRODUCTION PROBLEMS?

### WE CAN HELP!

**KMC TRACK SKIDDERS** are designed to operate **in ALL WEATHER & ALL TERRAINS**

Steep slopes | Wet & boggy grounds | Environmentally Sensitive soils  
Low ground pressures | Reduced soil compactions | Better traction

**KMC SKIDDERS ARE NOT JUST A DOZER WITH A WINCH**

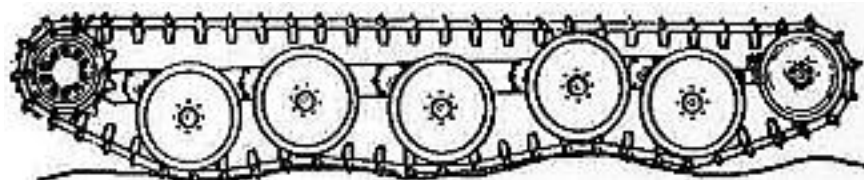
The KMC Steep Slope Alternative



The “NEWLY ENGINEERED” 1000 Series  
.....Extended Chassis

**DESIGNED FOR STEEP SLOPE  
OR WET GROUND SKIDDING!**

**A DIFFERENT DESIGN  
FOR  
DIFFERENT RESULTS!**



KMC TORSION BAR SUSPENSION allows independent up/down movement of each roadwheel allowing track to mold to the contours of the ground. This results in high traction, speed & mobility, lower ground pressure & reduced shock loads to the operator and vehicle. Together, these benefits add up to **HIGH PRODUCTIVITY!**

**Call Toll Free:  
1-800-562-5303**



## New! EAGLE RAPTOR



ECM  
CONTROL ON  
ALL NEW  
MODELS!

We  
Also Have  
Eaglets,  
Super  
Eaglets,  
Eagle IV,  
Eagle V,  
Eagle VI  
& Claws  
Available

## EAGLE CARRIAGE & MACHINE

Stop by our booth at OLC  
#198A-198-199-200

**(541) 963-4646**  
Fax: (541) 963-3415

62500 Commerce Rd, La Grande, OR 97850  
www.eaglecarriage.com

After Hours - Sam Baker  
**(541) 805-9504 cell**



(Continued from Page 4)

Along the Washington leg of the Oregon Trail, the muddy floodlands around the Chehalis River vexed many stagecoach travelers in the area. As with many parts of western Washington, the abundance of timber attracted many Scandinavian, Anglo-Saxon and Scots-Irish into the valley for logging.

Logging is still a big part of Lewis County, with mills and

many timber stands in the 2,403 square miles within county lines.

The Smiths grew up around their Lewis County and Chehalis logging community. Their dad and grandfather were loggers, so they naturally got into that line of work.

After working for other people for several years, learning the industry and gaining skills

(Continued on Page 17)  
See "B&M"

**"It's just kind of always a dream to have your own company when you're working out there on the rigging."**

**BRANDON SMITH  
OF B&M**



2014 JOHN DEERE 748H SKIDDER, dual-function boom, grapple, winch, direct drive, good 30.5 tires, tight center, runs well, 6,990 hours.....\$139,500



2013 JOHN DEERE 648H SKIDDER, dual-function boom, grapple, winch, direct drive, 2 NEW tires, 2 very good tires, cab, AC, good machine, 7,600 hrs.....\$119,500



2008 JOHN DEERE 648H SKIDDER, single-function boom, grapple, winch, low hours on new crate engine, good 30.5 tires, just off job, trade in.....\$75,000



1989 CAT D6H II, grapple, fixed boom, NO winch, S/U blade, differential steer, good undercarriage, some recent repairs, 19,647 hours.....\$70,000



TIMBERJACK 2618 FELLER BUNCHER, Cummins 8.3, recent U/C, Koehring hot sat, low hours last 4-5 years, consigned, call for location, good condition for price & age.....\$35,000

# MPI

INCORPORATED

Call Chuck  
**530-221-6760**

8537 Commercial Way, Redding, CA 96002  
chuck@mpiequipment.com  
www.mpiequipment.com



1996 PETERSON 4400B GRINDER, CAT 3412 @ 800 hp, 3 axles, all new tires, twin-disc clutch, dual horizontal rams for feed, heavy rotor, good last clean older unit, approx 87,000 lbs. w/o tractor.....\$89,500



2005 ZEHR HG4000 GRINDER, early Diamond Z, 2009 CAT C27, Tier II, 1,050 hp, remote, stacking conveyor, 8 NEW tires, good brakes, twin-disc clutch, hammer-mill approx. 62" x 17".....\$129,500



MORBARK 20 CHIPPER, new CAT C13 with 3,684 hours, 385 hp, Tier III, new tires, good brakes, lights.....\$69,500



2002 PRECISION HUSKY 66-23 CHIPPER, Husky XL-175 loader, CAT 3412, 700/750 hp, Tier I, joy sticks, twin-disc clutch, feed table w/feed chain, cab, 12 NEW tires, good brakes, fresh oil, new paint, recent injectors, one owner, was working daily, 11,141 hours.....\$99,500

NEW HEEL RACK FOR CAT 330FM OR 568 FM, unused, some pins.....\$7,500



1995 COZAD BABY 9-AXLE 2+2+2 LOWBED, 9' wide x 26' deck, drop sides, power tower in jeep w/20 hp Honda, 4 pin settings. Following items are NEW: all wheel studs, all 11R22.5 tires, all drums, all brakes, all bearings, all slacks, all S-cams, all lights, all wiring, all air lines, all air valves, all apitong deck, all oil caps, all seals, all air bags, all paint and more.....\$135,000



2010 PETERSON PACIFIC 5900EL CHIPPER, low hours, CAT power @ 765 hp, C18, remote, 4-pocket disc, P.T. Tech hyd clutch, 3/4" chip size, end load spout, 300 gal. water tank w/pump for fire suppression, IQAN screen, 2,400 hours, very good unit, consigned, west coast location.....\$225,000



2013 PROMAC 34 CFH III HORIZONTAL BRUSH CUTTER, 34" wide, pinned for a CAT 315CL and others, very good.....\$24,000



PROLENC SNUBBERS for skidders, in stock.....CALL



WASHINGTON 188 YARDER, Detroit 8V92T power, 4-axle carrier, standing skyline. This is a good, clean unit that was working as of 06/10/16. Consigned, call for location.....\$250,000

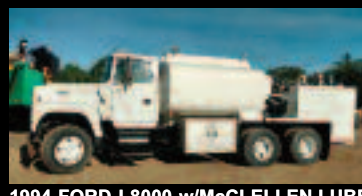
EAGLET CARRIAGE, w/controls available.....\$18,000



1996 CHRISTY 3DTK, 6-cyl Cummins, 2000' 3/4" swedge skyline, approx. 2000' 5/8" swedge mainline, haywire, guy lines, NO carriage, 75MHz radio system, approx. 6,500 original hours, mounted on Freightliner w/Cummins power, heavy 2-speed rear ends, biscuit suspension, good clean unit. Yarded logs until October 15, 2015. Owner is downsizing, consigned, call for location.....\$75,000



1997 KENWORTH T300 SERVICE TRUCK Cummins, PAC brake, 10 spd, 221,049 miles, 225/70R/22 tires, Maintainer body, 6,000 lb. crane, gas compressor, was working daily.....\$30,000



1994 FORD L8000 w/McCLELLEN LUBE BODY, Cummins 8.3, man trnas, PTO, spring-over-beam, 11R22.5 tires, approx. 2,000 gallon fuel w/two hoses, E-VAC, grease, hyd oil, eng oil, power washer, water, air.....\$29,000



2013 LINK-BELT 300 X3, Esco hydraulic QC, Esco link hydraulic thumb, good undercarriage, Isuzu engine, AC, radio, nice unit!, 2,619 hours.....\$145,000



2013 LINK-BELT 145 X3 Spin Ace, Esco bucket, Isuzu engine, pattern changer, cab, AC, good clean unit.....\$83,500



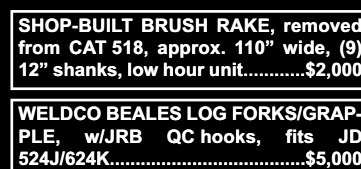
2012 VOLVO EC35C, rubber tracks, blade, off-set boom, runs will 1,215 hours, new Amulet hyd thumb.....\$26,500



2006 KAWASAKI 85Z V-2, approx. 4.8 yard smooth-edge bucket, new 26.5 radials, new injectors, Cummins, good clean unit, approx. and additional 300 hours since pictures were taken and new tires were installed.....\$85,000



2009 CAT 120M AWD, 14' board, NEW ripper, 14:00x24 tires, good clean grader, 6,229 hours.....\$132,500



SHOP-BUILT BRUSH RAKE, removed from CAT 518, approx. 110" wide, (9) 12" shanks, low hour unit.....\$2,000



WELDCO BEALES LOG FORKS/GRAPPLE, w/JRB QC hooks, fits JD 524J/624K.....\$5,000



CRISP LOG FORKS/GRAPPLE, fits CAT 950B/E/F, good for age.....\$2,500



WHEELS FOR JD 648H SKIDDER, 14-hole, 9 1/2" center.....2 @ \$650 each





### TED SLAYMAKER AND DAVE IVEY

**LEFT:** Chaser Ted Slaymaker signals to Skagit operator Steven Lundy where he wants this turn landed. **RIGHT:** Driver Dave Ivey has just hooked up his trailer and stopped to say hello to the Loggers World photographer. Dave drives a 2017 Western Star for B&M Logging.



**Visit us at the...**

## O.L.C in Eugene!

We offer excellent, affordable insurance programs for Logging Companies of all types! Commercial Coverage, Workers Compensation, Trucking, Group Medical, Life, Disability Income and Retirement Savings Programs, too! Ask about the "Owner's Alternative Plan!"

Enter to win a  
\$50 Sportsman  
Warehouse Gift Card or  
a new "Progressive  
Insurance Collectable  
Long Logger!"



A full-service, True Multiline Agency Dedicated to the Logging and related Industries  
Licensed in WA, OR, CA (OD43750), ID, MT & AK  
Commercial Insurance, Personal Insurance, Life, Disability Income,  
and Individual and Group Medical Plans

**866-514-3356 Toll-Free!**

360-274-6991 • 25 A Street SW, Castle Rock, Washington 98611  
Wayne Lunday, LUTCF, CLU, ChFC  
Aaron Lunday  
Gail Mowrey, ACSR, CMSR, CRIS  
Commercial Insurance Manager

**Clip and bring this ad for a special gift!  
Space 295 in the Exhibit Hall**

**Call us for  
Sales & Service  
SPECIALS**

See us at  
the Oregon  
Logging  
Conference  
Booths 40,41-50,51  
Performance  
Hall

See our carriages in action!  
Links on our website: [www.smith-boman.com](http://www.smith-boman.com)

**Boman**  
Motorized Carriages

**Sales & Service: 503-362-7657  
Cell: 503-860-2676**





**Contact: Kevin Zender (360) 319-7973**

**Rod Hansen (360) 520-6849**

**Bob Howell (541) 913-9559**

Email: kevin@zenderequipment.com

rod@zenderequipment.com • bob@zenderequipment.com

www.zenderequipment.com • Everson, WA

**Stop by and see the**

*New!*



**BARKO**

**270B**

**PROCESSOR**

**at the**

**Oregon Logging  
Conference**

**Outside Equipment Display**



#### LOG LOADERS

2012 Cat 568LL, w/Cat grapple, 5000 hrs, 1000 hrs on motor.....	\$260,000
2015 Link-Belt 290x2, w/grapple. 6,500 hrs. xlent cond .....	\$260,000
2014 Link-Belt 290x2, w/Jewell 63" grapple, 8,900 hrs, new u/c, very nice loader ..	\$235,000
2015 JD 2954D, w/Jewell grapple, 7,500 hrs, excellent condition .....	POR
2011 Tigercat LH 855C, w/Young grapple, heel, c/w Satco saw head, tether hitch, grouser, ext new pump, 12K hrs.....	\$265,000
2000 Kobelco SK 300, w/2 Pullmaster, tong tosser, Eaglet car, tree jack, grapple, new motor & pump, good uc.....	\$135,000
2005 Daewoo 300LL, w/66" grapple, good u/c, nice clean, dry and straight loader, 15,500 hrs, recent pump.....	\$60,000
2014 Doosan 300LL, nice loader .....	\$215,000
2012 Hitachi 210LL, w/Jewell grapple, 6,400 hrs, nice machine .....	\$172,500
2005 Hitachi 250LL, w/Jewell grapple, recent rblt motor, pump & u/c, nice loader .....	\$65,000
2014 JD 3754D, w/Jewell grapple, 6,000 hrs, nice loader .....	\$250,000
2006 JD 2454, w/Pierce grapple, 8,000 hrs, forestry cab, new motor, good u/c .....	\$115,000
1997 T-Bird 1238 LL, w/grapple, good nice old log loader .....	\$35,000
2009 Kobelco SK 295, w/Jewell grapple .....	\$85,000
2006 Kobelco SK 330, w/Jewell 63" grapple, 12,400 hrs, rblt pump, swing motor & main valve, 50% new u/c .....	\$80,000

#### DELIMBERS

2007 Madill 1800LL, w/Waratah 622B, 12,000 hrs, new drive motor and other repairs, log loader front.....	\$135,000
2014 JD 3754D, w/Waratah 625C, full rotation, 7,000 hrs, very good cond .....	POR
2005 JD 3554, w/2012 Waratah 624C, full rotation, 9k hrs on head, rblt motor, pump, new u/c on carrier .....	\$140,000
2005 Komatsu PC300LL, w/05 Waratah 624, up graded to Timberite comp., recent motor, pump & u/c.....	\$120,000
2013 Link-Belt 290X2 LL, w/2012 Waratah 623C, 8,500 hrs, new drive motor, bushings, 9,800 hrs on carrier.....	\$275,000
2013 Link-Belt 290X2 LL, w/2013 Waratah 623C, 10,000 hrs, very good cond .....	\$260,000
2004 Link-Belt 370, w/Waratah 626, new motor & hyd pump.....	\$160,000
1996 Link-Belt 2800, w/620 Waratah, recent rblt motor & pump, c/w parts head spare motor and lots of parts ..	\$40,000
2006 Cat 320C, w/06 Waratah 622B, rblt motor & pump, good u/c, 17,000 hrs, nice processor .....	\$70,000
1998 Timber Jack 1270B, w/TJ 762 head, good rubber, w/track chains and lots of spare parts for head.....	\$35,000
2004 Timberpro TB620 E, w/Logmax 7000, 12,000 hrs, good rubber.....	\$140,000
2007 Waratah 622B, w/comp & controls, recent bushings, good cond, drive motors.....	\$45,000
2004 Waratah 624 Super, w/comp & controls, recent drive motor and bushings, good cond .....	\$45,000
2013 Link-Belt 290X2 LL, w/DM 4550, xlent cond, 9,500 hrs .....	\$210,000
2005 JD 2554, w/DM 4400, recent boom and drive motor.....	\$65,000
2004 JD 2554, w/DM 4400, good running delimber, 18,800 hrs.....	\$65,000
2001 Cat 320B, w/DT 4400, recent repairs & spare parts, 14,000 hrs.....	\$60,000
2003 Daewoo 300, w/Pierce 3348, good cond.....	\$69,500
1998 T-Bird 1236, w/DM 3500, good running limber .....	\$23,000

#### ROAD BUILDERS

2006 Gradall XL4100, w/buckets, 41,000 miles .....	\$57,500
2013 Cat 325DFM, w/digging & clean out bucket, 3800 hrs .....	\$245,000

#### BUNCHERS

2012 Tigercat L870C, Tigercat 5702, 350 rotation saw, 10,000 hrs, good cond .....	\$190,000
2015 Tigercat LH855D, Tigercat 5198 felling saw, 1,500 hrs like new cond .....	\$400,000
1997 Madill 3200B, w/29" Rotosaw, recent complete rebuild .....	\$75,000
2013 Cat 522B, w/Cat 23" hot saw, good uc, tight machine, reman motor, 8,750 hrs .....	\$240,000
2006 Prentice 1190T, w/Quadco 22", 360 rotation, Cummins power, new u/c, 6000 hrs, nice buncher .....	\$130,000
2011 Valmet 450 FXL, w/Quadco 22", 360 rotation head, new u/c, good pins & bushings.....	\$210,000
2001 Timbco 445D, 32" bar saw, rblt motor, pumps and recent u/c, 13,000 hrs.....	\$75,000
1999 Timbco 445D, w/Quadco 22" saw, rblt Cummins and recent u/c, 12,500 hrs.....	\$62,500
1994 Timbco 425, w/24" bar saw, 5,000 hrs on motor & pumps, good uc .....	\$37,500
Cat 2440 hot saw, 24" saw, 40 degree tilt, new bearing .....	\$12,500

#### SKIDDERS & DOZERS & GRADERS

2010 JD 748H, bunching grapple, dual fnctn boom, rears 90%, front 30%, 1 set chains, 6000 hrs ..	\$110,000
2013 Cat 535C, dual fnctn boom, bunching grapple, 35.5 X 32 rubber, 10,100 hrs....	\$85,000
2005 Cat 525B, single fnctn boom, rblt trans and motor, good rubber & chains, 11,000 hrs .....	\$55,000
1995 Cat D5TSK, swing boom, complete recent rebuild .....	\$105,000
2015 JD 1050K, 4 barrel multi shank ripper, semi U blade, 1034 hrs, like new cond ..	\$515,000
2005 Cat 14H, w/hyd snow wing, 90% rubber & chains .....	\$150,000

#### YARDERS & SWING YARDERS

Washington 78SL, 3 guyline, rblt Detroit 6V71T power, good u/c, nice cond, run all logging systems..	\$107,000
1982 Washington 118, Major rebuild last year, new 8V92, air & hyd systems, new wheeler single lever controls.....	\$275,000
2000 Kobelco SK300, w/2 Pullmasters, tong tosser, Eaglet car, tree jack, grapple, new motor & pump, good uc.....	\$135,000
Diamond D210, rblt Cummins, low hrs on trans, new bearings in drum set, boom & gantry, good lines .....	\$310,000
Skagit 737, trl mount, Cummins 855, rblt heavy duty 7 guyline tube, Boman 7900 avl., Xlent cond ..	\$200,000
Skagit GT3, D7 u/c, Cummins, water cooled interlock in haul, out haul single lever control, tilt cab .....	POR
Madill 071, Detroit 8V92T, water on all drums, 4 guyline, good lines, nice yarder .....	\$110,000
T-Bird TY90, T100 self propelled, 8 guylines, Cummins KTA power .....	\$410,000
T-Bird TTY 70, Detroit 60 Series 475, Allison CTL60614 trans, good lines, 4 jacks, 24' frame, xlent cond.....	POR
T-Bird TTY 70, Cummins power, recent rblt, good lines .....	\$475,000
T-Bird TSY 255, Cat power, excellent cond .....	\$520,000
T-Bird TSY 255, Detroit 8V92T, c/w msp, good u/c, very good cond .....	\$475,000
T-Bird TSY 6140, Cummins power, 50' boom, very good cond .....	\$390,000
T-Bird TMY 50, Detroit 8V92T, good lines, nice yarder .....	\$320,000





## UP IN THE AIR

Duane Shortridge keeps the wood moving with the Link-Belt 370LX on B&M's Vail side.

**Uniform Wood Stacks Better, Dries Better, Burns Better And SELLS BETTER!**



**AUTOSPLIT**

**Give YOUR Firewood Customers What they Really Want – Clean, Uniformly Sized Wood!**

Cleans and sorts debris, kindling from firewood. AND Unlike Tumblers, you can feed the AutoFine directly from your splitter/processor or from a loader SIMULTANEOUSLY!

**AUTOFINE**



The Best Stand Alone Conveyor Available at Any Price. Lengths from 12' to 40' and Custom Hoppers to fit ALL Brands of Firewood Processors.

**AUTOCONVEY**



**AUTOMATED BIOMASS SYSTEMS**

**Dunlap Enterprises 209-532-4974 Authorized Dealer**

or Visit [www.ABSBiomass.com](http://www.ABSBiomass.com)  
For Complete Spec's, Video  
or the Dealer Nearest You

2235 Clarks Corners Rd., Marathon NY, 13803 • [info@absbiomass.com](mailto:info@absbiomass.com)

## PREMIUM LOG LOADERS



**2014 Hitachi Forester**, Like New 2,462 Hrs, Z370F-3 Log Loader, 43' Log Loader Front, 66" Young Grapples, UC Hi-Wide 9' 7" Gauge, Dual Swing Motors, Long Life Zink Free Oil, OSHA Certified Guarding, Rear Entry Cab, A/C



**2011 John Deere 3754D**, Log Shovel 7,380 Hrs, Great Value, Well Maintained, 43' Log Loader Front, 63" Jewell Grapples, H.D. 450 Size Undercarriage, Side Entry Forestry Certified OSHA, Dual Swing Motors, A/C

**Call Tim at (360) 532-1485**





### Limited Time Offer

Buy a SpeedMax XL bar and matching 19HX harvester chain and receive a Free SpeedMax Replacement Nose (SMR14T). See your dealer for details.

# BUILT FOR YOUR TOUGHEST DAY.



## SpeedMax™ XL .404" Cutting System 19HX Chain + SpeedMax XL Bar + Sprocket

We made SpeedMax XL for those who live to get the job done right — every cut, every day.

Oregon is the only manufacturer to design a complete chain, bar and sprocket cutting system for industrial harvesting equipment. Precision engineered components working together deliver unparalleled efficiency, performance, and durability.

**Faster. Stronger. Longer-Lasting.**

[OregonProducts.com/SpeedMax](http://OregonProducts.com/SpeedMax)

Oregon and SpeedMax are trademarks of Blount, Inc.





### GETTING LOADED

Heath Shanklin starts loading up the 2017 Western Star that is piloted by Dave Ivey. BELOW: Heath Shanklin (operator of the Doosan DX300LL) has just finished some paperwork for the log truck he is getting ready to load up.



### Logging Conference Special

Rates as low as  
**5.99%** (OAC)

#### MIKE LOBB

With over 30 years of lending to the forest products industry, Mike can offer solutions for all of your equipment needs. His experience makes the process simple and time saving.

### BUSINESS EQUIPMENT LOANS

mlobb@bizequiploans.com • www.bizequiploans.com  
CELL: 503-784-3935 • OFFICE: 971-204-0038

## THE BEST JUST GOT BETTER! FORTRONICS<sup>TM</sup> LTD

FORESTRY ELECTRONIC CHOKER SYSTEMS



Introducing the all new  
**GENERATION 3 Choker Bells.**  
Call today for more info.

**ACME**  
Manufacturing, Inc.  
(541) 741-2200



(541) 741-2200 - 90099 Prairie Road - Eugene, OR 97402

[www.acmecarriages.com](http://www.acmecarriages.com)



Follow Us On Facebook



(Continued from Page 11)

through the 80s in wood-rich western Washington, the two brothers decided to start out with their own company.

"It's just kind of always a dream to have your own company when you're working out there on the rigging," Smith said.

The two traded off on the

power saw and the skidder and eventually got into line logging, buying a Washington tower. Forester Tim Picknell of Roseboro liked what he saw from the company and began loading them up with work.

"We worked on tougher tower jobs and we had a really good relationship with Tim," Smith said.

They expanded as more work came in and people liked

their work. B&M eventually got up to six towers working around 2000. Currently, they have around three tower sides running and an additional three to four shovel sides depending on the time of the year and the work required. They also have a road-building crew.

They have three Madill and three Skagit towers of varying sizes, that are used depending

on what kind of equipment is needed.

"We have way more towers than we need," Brandon said with a laugh.

Along with the towers, they have a quite a few Doosans from Cascade Trader, Link Belts from Triad Machinery and CATs for their road-building side along with some CAT skidders. Their shovels have levelers on them to tackle ground on some sides, and while they haven't got into tethering yet, they're looking at that direction.

(Continued on Page 21)  
See "B&M"

## CALL US FOR ALL YOUR DOOSAN NEEDS

Ask about our  
Finance and Lease  
Specials!

# DOOSAN

Authorized Dealer

- Parts
- Service
- Sales
- Rental
- Lease

*Feenaughty*  
EST. MACHINERY CO. 1901

Serving the Northwest Since 1901

**(503) 282-2566**

Fax: (503) 282-1755

4800 N.E. Columbia Blvd., Portland, Oregon 97218

**(541) 636-3660**

541-357-4542

9404 Highway 99 N., Eugene, Oregon 97401

feenaughty.com

## KENWORTH T800 4-AXLE CHASSIS



**4 Trucks**

To Choose From  
YOUR CHOICE

**\$55,000**

Cummins ISX Engines,  
18-speed trans. (RTL018918B),  
Single speed Eaton rear-ends  
4:10 or 4:11 gears w/locker  
**Hendrickson Haul-max  
walking beam susp.**

#38 R892655 2002, DSP-463P  
rears, 252"WB, 475hp...\$55,000

#64 R383798 2003, DSP-463P  
rears, 251"WB, 475hp...\$55,000

#112 R892656 2002, DSP-463P  
rears, 252"WB, 475hp...\$55,000

#114 R892657 2002, DSP-463P  
rears, 252"WB, 475hp...\$55,000

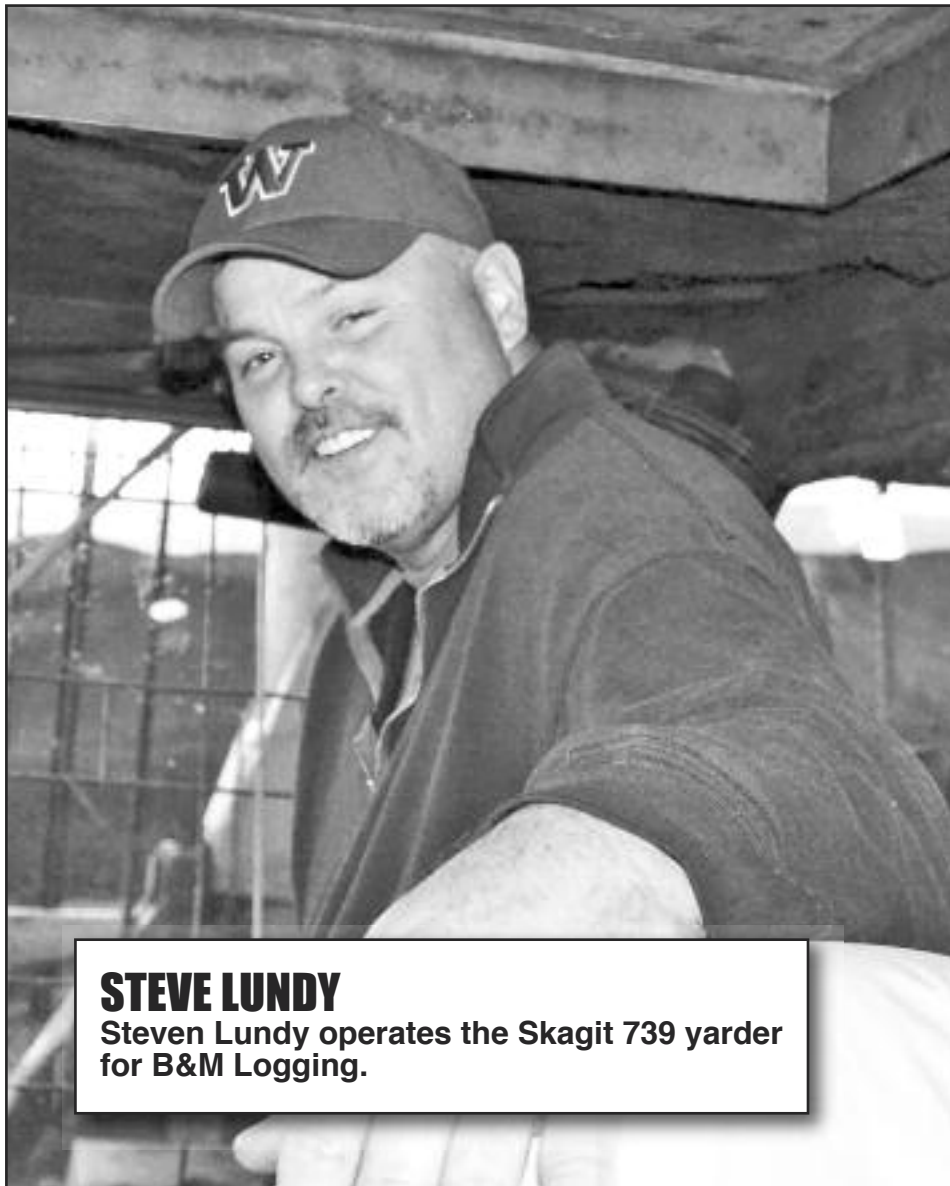
**CLEAN AND IN EXCELLENT SHAPE!**  
Maintenance Records - Regular Oil Samples  
For More Info: [www.irelandtrucking.com](http://www.irelandtrucking.com)

Thomas H.  
**IRELAND**  
INCORPORATED

Call Charles Ireland  
**541-863-1501**  
Myrtle Creek, OR







### STEVE LUNDY

Steven Lundy operates the Skagit 739 yarder for B&M Logging.

### KEVIN OSTER

Kevin Oster operates B&M Logging's Doosan 225 with a Waratah HTH 622C processing head.



## BUY ONLINE

[www.tirechainsrequired.com](http://www.tirechainsrequired.com)

You'll find the best selection of tire chains for all applications, small and large, at your fingertips!



saw teeth, tire chains, harvester bars & chain

**American Chains** SKIDDER CHAINS SHIP FREE!

Get a free TCR or GB hat when you enter code "FREEHATLW" at checkout!

For high quality hot saw teeth, harvester and slasher bars, harvester saw chain and accessories delivered straight to your door, shop

[www.harvesterbars.com](http://www.harvesterbars.com)

**FREE FREIGHT ON ORDERS OVER \$500!**  
(harvesterbars.com only)

**Ballantine**  
**CARLTON**

## MONTANA TRACK CLAWS, Incorporated

**NEW PRE-SEASON INVENTORY**  
*Get Them While They Last!*



**Hundreds of Satisfied Customers Coast to Coast**

Track Claws are reusable, quick connect traction devices that require no welding or cutting.

Their unique "V" design provides penetrating traction while minimizing side slippage for improved safety.

**Track Claws** can be installed in minutes using only a ratchet and socket. No pad bolts are used in the installation - they bolt through the clean out hole using a special bottom plate (included) and a zinc plated grade 8 bolt.

Durable and reusable, **Track Claws** are made of higher grade material than track pads. Then they are heat treated creating a durable product that can be reused many times.

**Track Claws** are available for all popular styles of track pads including single, double and triple grouser bar styles. For pads without cleanout holes, a template will be provided.

**New Style Available that fits Multiple Machines!**

*Call or email for details*



*Phone Calls between Noon and 9pm Mountain Standard Time please*

**Montana Track Claws, Inc.**

**888-293-2529**

1250 Big Bend Rd., Libby MT 59923

fax: 406-293-2267

Website: [www.montanatrackclaws.com](http://www.montanatrackclaws.com) • Email: [mail@montanatrackclaws.com](mailto:mail@montanatrackclaws.com)





# Wilson

## Equipment Rentals & Sales

*Since 1983*

As part of their ongoing efforts to provide their customers with the best equipment in the industry, Wilson Equipment Rentals & Sales has been named an authorized retailer for

**Bobcat of Medford**  
**Bobcat of Eugene**

*and*

**Doosan Dealership Serving**  
**Southern Oregon &**  
**Northern California**

*Visit Us at Our Multiple Locations:*

6731 Crater Lake Hwy  
**Medford, OR**

90420 Auction Way  
**Eugene, OR**

Toll Free: (866) 205-7113

Direct: (541) 830-3966

[www.wilsonequipment.net](http://www.wilsonequipment.net)



**DOOSAN**



**Bobcat®**



## DOUG CAPELLI ON THE KOMATSU

Doug Capelli at the controls of the Komatsu PC300II/Waratah HTH624C processor.



**You Can Own Timberland Within Your IRA**  
**INVEST IN YOUR OWN INDUSTRY**  
*Properties From 5 Acres Up*

*Finally  
 you can invest in  
 something you  
 understand,  
 with someone who  
 understands  
 Logging and  
 Loggers*



**RE/MAX**  
 Key Land Company  
**Terry Akins**  
 Agent

1015 Johnson Rd  
 Centralia, WA 98531  
 Office: 360-330-0804  
 Cell: 360-239-1253  
 Email: tbakins@msn.com

Each Office Independently Owned and Operated

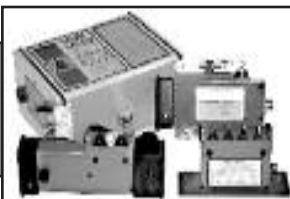
**We can take care of your investment from  
 Purchase Through Management and Sale**



**ROTHENBUHLER  
 ENGINEERING**

HOME OF THE *Talkie Tooter*

**MARK III WHISTLE CONTROL**  
 now in the 72 MHz band, get away from  
 congested frequencies with a proven design



**CARRIAGE CONTROLS**  
 rugged radios that can control most  
 manufacturer's carriage from the ground or  
 the yarder

**Rugged, Durable,  
 Industrial Radio  
 Equipment since 1946!**

P.O. Box 708, 524 Rhodes Rd  
 Sedro-Woolley, WA 98284-0708  
**Telephone 360-856-0836**  
[www.talkietooter.com](http://www.talkietooter.com)



(Continued from Page 17)

Lewis County ranges from high mountains to river valleys so the terrain can be varied, challenging and steep.

"We like to mix it up with the new equipment and maintain some," Brandon said. "It depends on the market and what we need for equipment."

The company has a full-time shop with five mechanics along with a couple of truck mechanics who go out into the field to keep everything running.

Brandon keeps work ahead of his employees, looking at prospective pieces and handling that aspect of the

## "We enjoy working with our employees, watching their families grow and we have a lot of good men, local employees working for us."

company while Matt works on the tower sides of the business.

The company primarily operates within two hours of Chehalis - which is in the central part of western Washington, conveniently along Interstate 5. They log in east Lewis County areas like Morton and Packwood and go as far west as Menlo

### BRANDON SMITH OF B&M

while logging as south as Cougar. They cut their teeth with the

company in the Capitol Forest near Olympia and still operates in the area as well.

Off of Interstate 5 a bit, the Capitol Forest is a multi-use forest under the guidance of the Washington DNR. Along with hiking and ATV use, the forest sees many log-

ging operations in it as well. One interesting note about the Capitol Forest is the existence of Mima Mounds, which are unexplained bumps in the topography that scatter swatches of ground.

"We do quite a bit of work on Forest Service land and do a lot of logging for Hampton Lumber, Weyerhaeuser and Sierra Pacific," Brandon said.

On the truck side, with 18 hauling logs for the company, truck boss Jeff Lee keeps everything moving with dispatch. They mainly haul into Olympia, Longview, Shelton, Aberdeen and Randle.

(Continued on Page 22)  
**See "B&M"**

# WRECKING LOGGING EQUIPMENT

EXCAVATORS • CRAWLER TRACTORS • ROCK TRUCKS • LOADERS • GRADERS



2004 Cat TK732



2005 Link-Belt 370LX



2006 Deere 844J



2013 Deere 225DLC



2003 Cat 325CLL



2005 Link-Belt 350LX



2005 Cat 322CLL



2004 Deere 953G



2007 Hitachi ZX350LC3



2004 Deere 200CLC

## FRALEY TRACTOR, Inc. WRECKING DIV.

(509) 884-7117 • FAX (509) 884-3959 • fti2@nwi.net • 1850 GRANT RD., E. WENATCHEE, WA 98802

### CAT EXCAVATORS

314C; 315BL; 320LL; 320BL; 320C;  
322CL; 320DL; 325L; 330BL;  
345BL; 345CL; 350L

### CAT TRUCKS

D25D; D250E; D300E; D400D

### CAT SKIDDERS

D5H; D4H; 525; 527; 525C

### CAT SCRAPERS

615, 621E

### CASE

821; 9030B; 9040B; 9050; 9050B;  
9060B

### GROVE

RT745

### LINK-BELT

210LX; 240LX; 290LX; 350LX;  
4300 CII-Q; 5800 CII-Q; 6000Q

### KOBELCO

ED150; SK290LC6; SK200LC IV;  
SK400LC IV; SK330

### JOHN DEERE

120C; 160DLC; 200DLC; 230LC;  
2554; 310SE; 330CLC; 350DLC;  
450DLC; 550H; 544J; 544G;  
600CLC; 624G; 644H; 644G; 648GII;  
710D; 750B-C; 744H; 753GL;  
772BH; 844J; 850J; 992D-ELC

### SAMSUNG

SE 350LC2

### TIMBCO

T425B-C-D; T445B-C-D; T445EXL;  
475D; 475EXL

### TIMBERKING

TK722; TK732; TK1162

### KOMATSU

PC120-6; PC130-6; PC138US-2;  
PC220LC7; PC160LC-7; PC200LC-6;  
PC220-6E; PC228USLC-3;  
D155AX5; D355A; WA 200-1;  
WA180-1; WA400-1; WA320-1;  
WA180-3; WA250-3; WA500-1-3-6

### TIMBERJACK

608; 628; 1210B; 2628; 1270B

### HITACHI

ZX27U; ZX120; EX150; EX160;  
ZX200LL; EX200-5; EX200LC3;  
EX220-3; ZX270LC3; ZX330  
ZX350LC; EX330LC5; EX400LC3;  
ZX450LC; EX550LC5; EX700;  
EX750-5; ZX850LC3

### VALMET

EX10; 500T; 860; 892

### VOLVO

A25C 6x6 Rock Truck; L330C;  
L120E; L180C; L220E

**WE BUY HEAVY EQUIPMENT FOR PARTS AND RESALE...CALL US!**

Visit us on the web at: [www.fraleytractorinc.com](http://www.fraleytractorinc.com)





(Continued from Page 21)

"We have many subcontractors hauling for us as well," Brandon said.

Brandon said the company did between 70-75 million board feet last year and said their output depends on how much thinning they're doing.

As with many logging companies, finding good help is tough this day in age with a younger generation not as interested in getting out into the woods. The employees for B&M, Brandon said, are the reason the company gets their work done and the Smiths are extremely grateful of them.

"They get into pretty tough jobs on tough terrain and having good help gets those jobs done," Brandon said.

B&M has their collection of characters and long-time employees with many guys having been there for over 20 years. Some guys have grown up with company, starting shortly after high school and now are in their 40s.

Paul Lagerquist and Matt Davis help with the day-to-day operations for the company and serve as Brandon and Matt's right-hand men.

Brandon said Cascade Trader has treated the company well, as well as Fred from Harbor Saw. Tim Sayler at Service Saw in Chehalis, along with Modern Machinery have also been good to the company.

Brandon said the company tries to keep good relationships with people as relationships and reputations are important in the timber industry. They'll continue to keep their towers and shovels moving logs in the Chehalis area thanks to the hard work of their employees.

Having six sides is busy work and it's amazing to think, it started with just one skidder over 20 years ago.



### SYDNEY OVERBAY AND DARLA HOOD

Sydney Overbay (left) and Office Manager Darla Hood pose for the pesky Loggers World photographer. If you think they look a lot alike, it's because they're mother and daughter.

## LOGGERS WORLD VIDEO

Use your smartphone to download a QR code reading app. Scan this code to see video of B&M Logging in action. Video by Kevin Core. Also check out our YouTube Channel by searching for "Loggers World" on YouTube.





**Leading For Success**

# 80<sup>th</sup> Annual Conference & Equipment Show

Mirabeau Park Hotel & Convention Center  
Spokane Valley, WA

**April 5-7 (Thurs. - Sat.) 2018**  
Equipment Move Out Noon Saturday

Julie Schwanz  
Julie@intermountainlogging.org  
Secretary/Conference Coordinator  
(208) 245-3425

[www.intermountainlogging.org](http://www.intermountainlogging.org)

## SCHMUNK'S TIRE CENTER

2650 MAIN  
SPRINGFIELD, OR 97477  
**"One of the Northwest's  
Largest Chain Distributors"**



**TOLL FREE 1-800-242-8473**  
541-746-1604 • Ask for Dan  
HOURS: 8 AM - 6 PM Mon.-Fri.,  
8 AM - 5 PM Sat., Closed Sun.  
Email: dan@schmunks.com

**SKIDDER AND LOADER CHAINS**  
RING STYLE • 23.1 x 26 (9/16")  
**(1495<sup>.95</sup>) PR.**

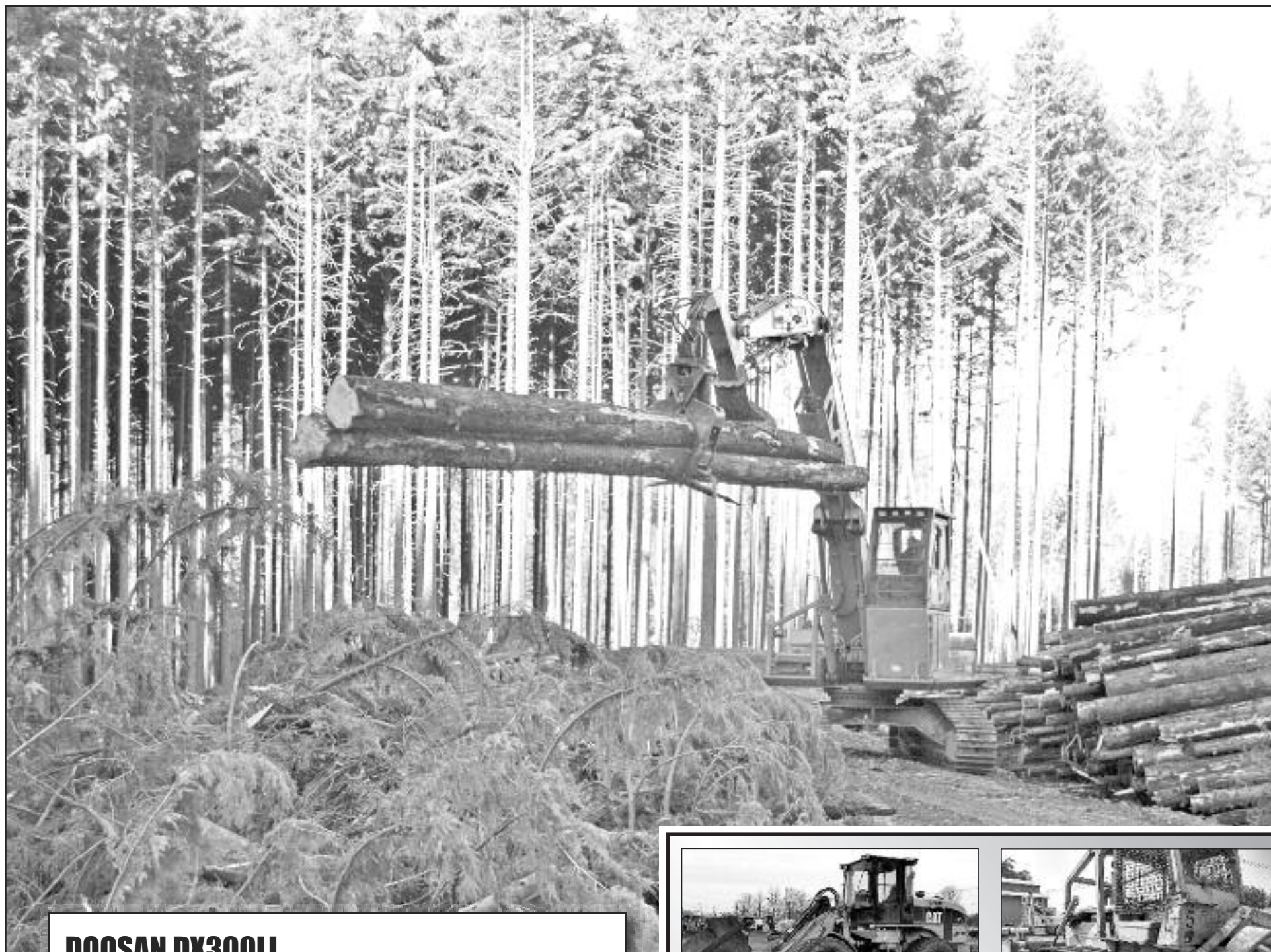
**CAM LOCK TRUCK CHAINS**  
SINGLES **(44<sup>.95</sup>)** • DUALS **(99<sup>.95</sup>)**

**"Huge Inventory"**  
of Truck & Skidder Chain in other sizes available at Similar Savings  
**Ask about our Large Stock of Used Off-Road Tires**



RING STYLE





### DOOSAN DX300LL

The Doosan DX300LL, piloted by Heath Shanklin, moves the logs from where the processor drops them to the other side of the road where they will wait to be trucked to the mill.



**CAT 930 G and 924G**  
*Parting Out*



**CAT D6C** *Parting Out*



**CAT 938 F** *Parting Out*

**Rebuilt  
CAT  
3046**



**CAT D342**  
High HP.  
rebuilt  
**Call**



**CAT  
316, 320, 325, 330  
Wedg Coupler  
Buckets**



**John Deere 510** *Parting Out*



**DUKES**  
**PARTS & EQUIPMENT**  
**509-952-9223**

204 Butterfield Rd., Yakima, Wa 98901 Shop: 509-469-9420

Check us out online: [www.dukesheavyequipment.com](http://www.dukesheavyequipment.com)

**541-401-5933**  
**Made In The USA**

**EQUIPMENT SEAT COVERS**

DON'T REPLACE IT. COVER IT.  
[www.equipmentseatcovers.com](http://www.equipmentseatcovers.com)

- Make your old seat like new
- Protect Resale Value
- Protect new seats from wear & tear
- Custom Screen Printing Available

**Don't Replace it - Cover It! Protect Your Seats!**



SEE US AT  
THE OREGON  
LOGGING CONFERENCE  
BOOTH #625

**Buy Direct @ [www.equipmentseatcovers.com](http://www.equipmentseatcovers.com)**



# BLAST FROM THE PAST

BY QUINN J. MURK FOR LOGGERS WORLD



## STEAM TRACTION ENGINE

The old timers of days gone by were very good at making things work in situations they were not intended for. This steam traction engine is a good example. Some engines were used to power small portable sawmills of the day, which was common, but this engine has been modified to do its job more efficiently. You will note two things clearly in this picture. First, the fly wheel has been built up with a wooden lagging to make it wider for the belt, and give it a bigger diameter to turn the saw at the appropriate speed for the wood they are cutting. Second, the smoke stack has been enlarged and extended. This provided a better draft in

the fire box burning the wood more efficiently and getting the sparks higher up in the air, reducing chances of fires starting in the sawdust and waste on the ground.

### I BUY LOG SKIDDERS



- Dozers
- Loaders
- Excavators

**1-503-545-0007**

## WANTED

**Experienced Field Mechanic  
and/or Truck Mechanic  
call Papac Alaska Logging**

**907-965-4222**

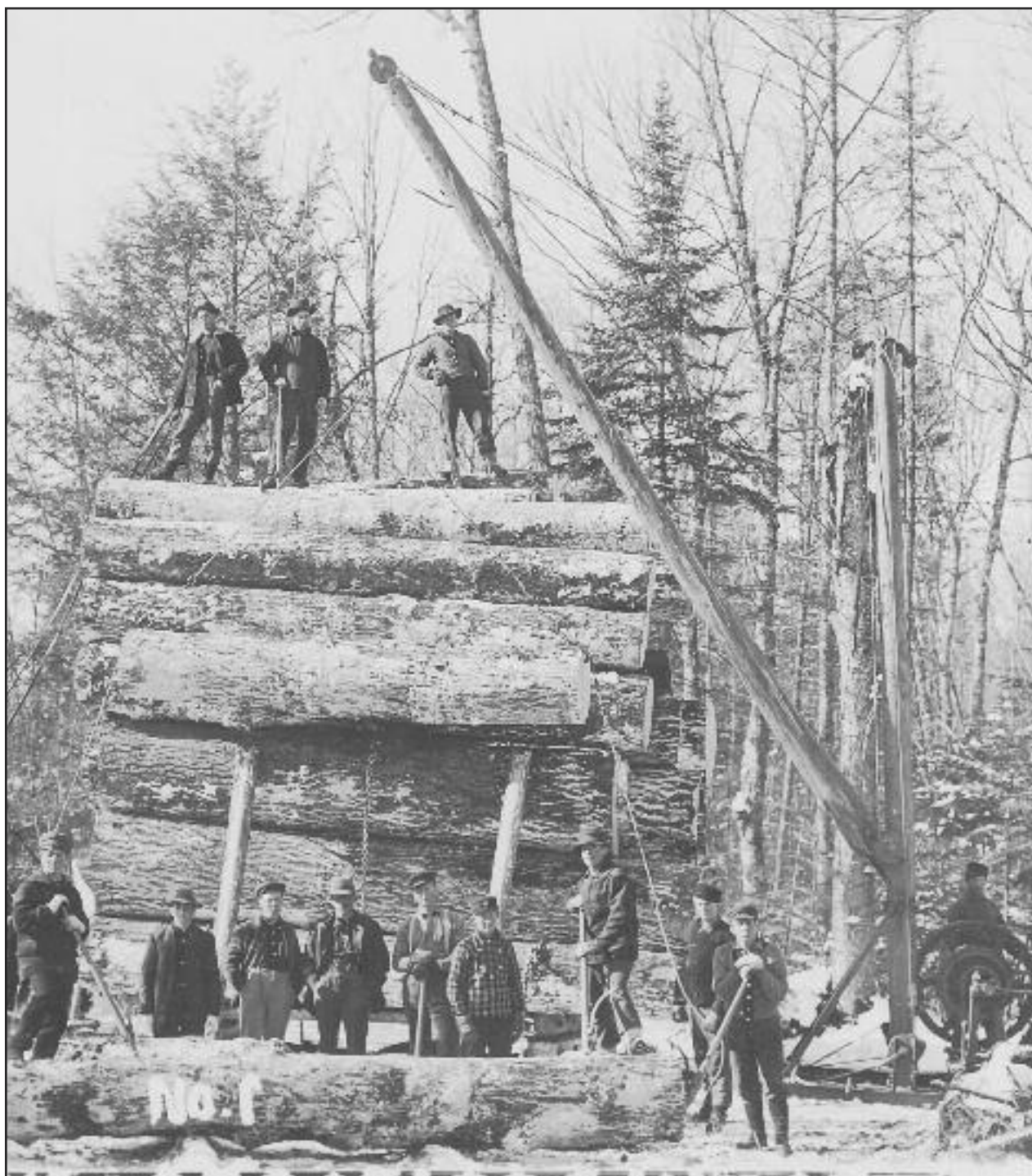


# BLAST FROM THE PAST

BY QUINN J. MURK FOR LOGGERS WORLD

## LOADING LOGS

Loading the sleighs used in the eastern forests was an art in and of itself. These old loading crews could really stack them on. Using gut chains, the loads could literally be stacked straight up. Loading rigs called "jammers" were used in doing the job. The one used here is known as a "swing boom." It loaded from the end like we load trucks today. The other type was an "A-frame" and it loaded from the side. The swing boom jammers were mounted on runners that fit in the ruts of the ice road. Pulled to a deck by the horses that would also help load the logs, the rig was guyed down, and the boys went to work - and work they did.



### CONTACT QUINN: VIA EMAIL

[ktmurk@centurylink.net](mailto:ktmurk@centurylink.net)

### Or by Mail at:

P.O. Box 319,  
Siletz, OR 97380



Join us for the 2018 Conference in beautiful Victoria, B.C.

April 25-27, 2018

### "Families In The Forest"

[www.olcnw.com](http://www.olcnw.com)

Visit our website for details & registration

Questions? [info@olcnw.com](mailto:info@olcnw.com) or 425-422-6686



## FIRST ANNUAL TOY SHOW

April 21, 2018  
10 am to 4 pm

213 East Maple St., Centralia, Wa.

Vendors (\$15.00/table) and Display People Wanted

Vendors reserve tables by March 15, \$10,  
after the 15th it is \$15. No cost to display only

### Open To The Public

\$3.00 Admission to show/museum, kids free

Contact: [kingcletrac@aol.com](mailto:kingcletrac@aol.com) phone 360-701-7525

**Come to the Show & See the Museum, too!**





As We See It....

## Ensuring Loggers Have a Seat at the Table

By Danny Dructor

The U.S. forest products industry is very broad with diverse and sometimes conflicting interests. The American Loggers Council was formed in 1994 when it was clear our nation's professional timber harvesters needed a strong, consistent presence in order to impact issues on a national level. ALC is billed as the "National Voice for Professional Loggers." We are loggers working for loggers, because if don't we don't stand up and speak out, nobody else will.

Twenty-four years later ALC continues to grow, and we are stronger than ever. Just as importantly policymakers are taking notice and recognizing our organization as an important source of information regarding many issues, including forest management, transportation and economic health in rural America. This was clear when ALC was invited to a special meeting in December with Agriculture Secretary Sonny Perdue and Interior Secretary Ryan Zinke in Washington D.C.

I attended this meeting along with Associated Oregon Loggers Executive Vice President (and ALC Policy Committee Chair) Jim Geisinger. The meeting was organized as an inter-agency "listening session" on wildfires along with other federal, congressional, and state stakeholders. The Secretaries sought our

input as the Trump Administration seeks to change the way federally-owned forests are managed.

Also attending the meeting was House Natural Resources Chairman Rob Bishop (UT) and Congressman Bruce Westerman (AR). Both were instrumental in writing and passing the Resilient Federal Forests Act of 2017 (HR 2936), comprehensive legislation to increase active forest management on federal lands and reduce the risks of catastrophic wildfires. Congressman Westerman, the only forester in the U.S. Congress, also helped include language from ALC's Future Logging Careers Act into HR 2936 that was approved by the U.S. House in October.

The listening session centered around fixing the wildfire funding problems, possible improvements to wildfire management, innovative ways to detect and suppress wildfires, and ways to improve cooperation between industry, state, and federal authorities. It's clear this administration is prepared to take action to improve the management of federal forest lands, and promote timber harvesting and thinning to reduce the risks of catastrophic wildfires.

As a forest owner himself, Agriculture Secretary Perdue

has a strong interest in improving the U.S. Forest Service under the USDA. His new Chief of the U.S. Forest Service, Tony Tooke, is already working hard to improve the agency's operations. Tooke has convened other key personnel within the Forest Service to find ways to develop and implement timber sales and forest health projects more quickly. The agency's new mandate is to do more, and faster.

Interior Secretary Ryan Zinke in particular has a very strong understanding of our industry and way of life. Zinke was born and raised in Montana's Flathead Valley and witnessed all the social, economic and environmental problems that occurred after timber harvests on federal lands declined dramatically. As a Congressman, Zinke sponsored legislation to reduce catastrophic wildfire risks through active forest management. As Secretary, Zinke has invested much of his own political capital restoring multiple-use management to federal lands under his department, including reviewing national monuments that were unilaterally established by presidents under the Antiquities Act.

During the meeting, and in conversations afterwards, Jim and I shared the loggers' perspective on these important issues. We stressed the importance of protecting and strength-

ening the private-sector forest products infrastructure that is vital to the federal government's mission to restoring federally-owned forests. Without loggers, and without viable logging businesses, the feds will never be able to treat the 100 million acres that are at some risk of catastrophic wildfires.

The Secretaries took note of this perspective, and we have been invited to participate in additional conversations about how the federal government can work better with loggers and the rest of the industry to improve forest health and support American manufacturing.

In Washington DC, decisions are made by those who show up, and ALC will continue to show up so that loggers have a seat at the table as the federal government considers issues and legislation that affect us. But just as importantly, it is essential that all loggers participate in the process in some form, whether it's being active in state logging associations or responding to action alerts. We must stand up and speak out for all loggers, because nobody else will.

Danny Dructor is the Executive Vice President for the American Loggers Council with headquarters in Hemphill, Texas.

*The American Loggers Council is a 501 (c)(6) not for profit trade organization representing professional timber harvesters in 32 states across the United States. If you would like to learn more about the ALC, please visit their web site at [www.amloggers.com](http://www.amloggers.com), or contact their office at 409-625-0206.*



**COWLITZ RIVER RIGGING**

### Full Service Shop

Full Service Rigging, Saw Repair & Work Clothing

**[www.LoggingSupply.com](http://www.LoggingSupply.com)**

**Toll Free 1-800-488-3127**

## USED PARTS FOR

**CONSTRUCTION & LOGGING MACHINERY**

**Crawlers, Loaders, Trenchers, Excavators,**

**Backhoes, Skidders, Skid-Steers,**

**Engines and Transmissions**

*"Rely on our Experience - Est. 1967"*



**Schaefer Enterprises**

**1-800-626-6046**

4535 St. Rt. 3 N. • P. O. Box 136, Wolf Lake, IL

[www.sewlparts.com](http://www.sewlparts.com) - [parts@sewlparts.com](mailto:parts@sewlparts.com)

**Most Major Credit Cards Accepted**





Summary Judgment....

## On Land Powers: Trump Must Tell His Lawyers “Stand Down”

by William Perry Pendley

A recent ruling by the notorious U.S. Court of Appeals for the Ninth Circuit provides President Trump an opportunity to strengthen the Republic's system of checks and balances. He should order federal lawyers to end their defense of a million-acre federal land lockup by the Obama administration and instead to acknowledge: the Property Clause gives Congress exclusive power over federal lands; Congress reasserted its unilateral power in 1976; and Obama's land grab is unconstitutional, illegal, and ill-advised. Thus, Trump will restore constitutional equilibrium, ensure America's uranium supply, and save jobs in the West.

The Property Clause gives Congress sole power to manage federal lands (“Congress shall have Power to dispose of and make all needful Rules and Regulations respecting the Territory or other Property belonging to

the United States.”). Thus, the Executive has only the power delegated by Congress. For almost 200 years, no single act defined the Executive's power over public lands; however, on occasion, Congress enacted legislation delegating the Executive authority to withdraw federal lands.

Not surprisingly given that nature and the law abhor a vacuum, over the decades even in the absence of statutory authority, presidents often temporarily withdrew public lands from operation of federal lands laws, as to mining, for example. As a result, in 1915, the Supreme Court of the United States held that acquiescence by Congress to these withdrawals provided the president with implied authority to make them. The Court did acknowledge that Congress could legislatively revoke that implicit authority.

Meanwhile, in 1910, Congress

passed legislation delegating to the Executive limited authority to make temporary withdrawals “for waterpower sites, irrigation, classification of lands, or other public purposes...,” but the Supreme Court declined to rule on whether that act repealed the Executive's implied authority. In 1941, FDR's Attorney General opined that the Executive had implied authority to make any withdrawal, not just those allowed by the 1910 Act. In 1958, Congress limited the Executive's defense withdrawals to less than 5,000 acres each. In 1964, Congress created the Public Land Law Review Commission, which reported in 1970 that Executive withdrawals were “uncontrolled and haphazard” and urged that “Congress assert its constitutional authority by enacting legislation reserving unto itself exclusive authority to withdraw or otherwise set aside public land for specified limited-purpose uses.”

Finally, in 1976, with the Federal Land Policy and Management Act, Congress did just that. It repealed 29 withdrawal statutes, overruled the Court's 1915 ruling, and revoked all implied powers the Executive may have had to withdraw public lands. Then it delegated authority to the Executive to make specific and limited withdrawals of less than 5,000 acres; but, larger withdrawals required that

Congress be notified—with documentation of the withdrawal's necessity and impact—and that the withdrawal survive a “one-House veto.” In 1983, however, the Supreme Court struck down a different “one-House veto” provision, thus apparently undoing the check on Executive authority Congress imposed with its 1976 Act.

In 2012, Secretary of the Interior Salazar—over the objections of federal land experts but to the delight of environmental extremists—withdrew over a million acres of uranium-rich federal lands in northwestern Arizona, uranium that could power Los Angeles for 154 years. The American Exploration & Mining Association (AEMA) challenged the withdrawal for its small miner members with valuable claims in the area. AEMA argued Congress would not have given the Executive the withdrawal authority used by the Obama administration if it did not have the power to “veto” any abuse of that authority. Thus, if the “one-House veto” is unconstitutional, the withdrawal authority is null and void.

An Arizona federal district court ruled the “veto” unconstitutional, but upheld the withdrawal authority as severable. Days ago, a Ninth Circuit panel ruled perversely—after all Congress intended to limit Executive power—that Congress was so determined to give the Executive land withdrawal authority, it would have done so without the “one-House veto.”

Over to you Mr. President.

*Mr. Pendley, a Wyoming attorney, is President and Chief Legal Officer of Mountain States Legal Foundation and a regular columnist in Loggers World.*

## Appelo Archives Center

Logging Museum, Library and Bookstore



Our best selling book:

“When Logging Was Logging” is available for purchase in store, online, and over the phone!

1056 SR 4 Naselle, WA 98638

360.484.7103

info@appeloarchives.org

www.appeloarchives.org

The Appelo Archives Center specializes in preserving and presenting the history of the Naselle-Grays River Valley area of SW Washington. The Archives offers a museum, local genealogy, library, archival material, and bookstore.

Open Tues.-Fri 10am to 4pm and Sat. 10am-2pm

Photo:

Deep River Logging Co.'s  
Shay No. 5 at the Deep  
River log dump, 1912.



5th  
Annual

## Fellowship of Christian Loggers Breakfast



Saturday, February 24th,  
7:00 a.m.

at

Grace Community Fellowship  
989 Country Club Road  
Eugene, Oregon

Join us for a time of fellowship and “Grandma Lori's homemade hotcakes” before you head to the “logging show”

Family and friends are all welcome! Breakfast is free, please RSVP by Feb. 22nd, call/text/email Terry at 541-315-8192 or [terry@christianloggers.org](mailto:terry@christianloggers.org)

Galatians 2:20

“I have been crucified with Christ. It is no longer I who live, but Christ who lives in me. And the life I now live in the flesh I live by faith in the Son of God, who loved me and gave himself for me.”





**LINK-BELT 370**  
Leroy Miles uses the Link-Belt 370 with Waratah HTH624C to clean up the end of this log in the making.

# **Logging Music is a Great Gift for that Hard-to-Buy-For Person!**



**Endangered Species** **\$15.00**  
Plus \$5.50 Shipping

"Endangered Species" - In 1989 Craig & Terry went back into the studio to record their next album. Craig wanted to share his point of view through music which addressed some of the political issues facing the logging industry at that time.



**You Hold Me Still** **\$15.00**  
Plus \$5.50 Shipping

"You Hold Me Still" - In 1992 after many requests to record a gospel album they again returned to the studio and recorded eleven original songs. Two of the songs are co-written - one with Don Beck and one with Rick Barrows.



**Songs from the Siuslaw** **\$20.00**  
A Double Album! Plus \$5.50 Shipping

"Songs from the Siuslaw" (pronounced SY-u-slau) is a heartfelt tribute to the hard working men & women in the logging industry and dedicated to the many men who have lost their lives doing one of the most dangerous and unappreciated jobs in the world. This a double CD set that was recorded live in Florence, Oregon in 1999 at the Florence Events Center. The first CD is saw-shaped and will play in top-loading and tray-loading CD players ONLY. It comes with a 20-page booklet- filled with humorous lyrics and old logging photos.

Order on their website for fastest service:  
**www.ctmusicoregon.com**

Or if you prefer not to order on-line you can call them at: 541-268-6910



**The Snag Fallers Ball** **\$15.00**  
Plus \$5.50 Shipping

"The Snag Fallers Ball" - A light hearted collection of original songs about logging in Oregon and Alaska, and was first released in 1988. Craig wrote nine of the eleven songs on the album and co-authored two others with Don Beck, a long time friend, logger and musician also from the small town of Mapleton, Oregon.



**Special Deal!**  
**ALL 3 CD'S** **\$40.00**  
Snag Fallers Ball, Endangered Species  
& You Hold Me Still Plus \$5.50 Shipping



**SUPER Special Deal!**  
**ALL 5 CD'S** **\$60.00**  
Snag Fallers Ball, Endangered Species  
& You Hold Me Still PLUS  
Songs from the Siuslaw (double album) Plus \$6.50 Shipping



**Please send me  
the items  
I have checked!**

Send your check or Money order to:

**CT MUSIC OREGON**  
86399 SWEET CREEK RD,  
MAPLETON, OREGON 97453

NAME: .....

ADDRESS: .....

CITY: ..... STATE: ..... ZIP: .....

PHONE: (.....) .....

(ALLOW 3 WEEKS FOR DELIVERY)



**LOTS OF CABLE**

LEFT: The Boman carriage lands a turn at sunrise on B&M Logging's Vail side. RIGHT: Top rigging on the Skagit 739.



# LOGGERS WORLD Suspenders are Back!!



*Show the world that you support*  
**LOGGERS WORLD MAGAZINE**  
*by wearing Loggers World Suspenders*

Loggers World Suspenders are now available in traditional red (2" wide) with black lettering. You can order them with leather ends or clips and we also have the buttons. Just use the handy form below.

**Only**  
**\$18.50**  
 per pair

*A Great Gift!*

(Washington Residents pay  
 \$20 including Sales Tax)

Plus \$7.50 shipping & handling



## PLEASE MARK YOUR PREFERENCE & SIZE...

☐ LEATHER ENDS

☐ METAL CLIPS

☐ 46"

☐ 46"

☐ 50"

☐ 50"

☐ 54"

☐ 54"

☐ **BUTTONS** *for Leather Ends*

**\$3.00**  
 Pkg.

Send your check or Money order to:

LOGGERS WORLD LLC  
 P. O. Box 1631  
 CHEHALIS, WA 98532  
 Credit card sales call: 800-462-8283

Offer expires  
 December 31, 2018

NAME: .....

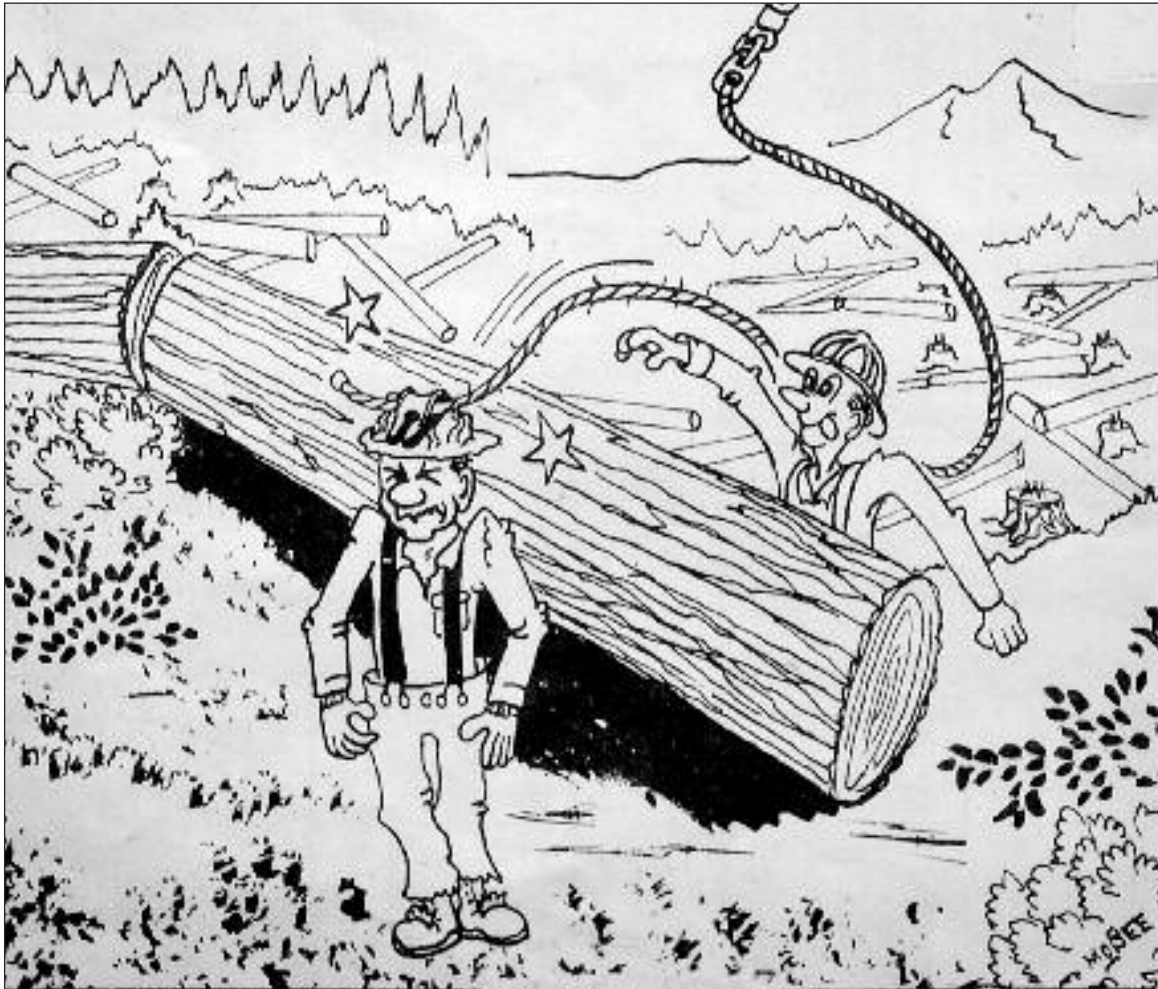
ADDRESS: .....

CITY: ..... STATE: ..... ZIP: .....

PHONE: ( ) .....



# More Cartoons from Marvin McBee



A few months ago we announced that Marvin McBee had given us permission to re-publish his classic logging cartoons from the 60's.



Sadly, we haven't had room until this month to share more of them with you.

Marv's cartoons have significant meaning to me besides being funny. When my son was growing up, he always talked about the McBee cartoons that Finley had stapled to the wall in my office.

We are pleased to be able to share them with a new generation of readers.

**Thanks, Marvin!**



## REDWOOD REGION LOGGING CONFERENCE March 15-17 2018



- ◆ Equipment Show
- ◆ Portable Sawmills
- ◆ Show N' Shine Comp.
- ◆ Log Loading Comp.
- ◆ Education Day
- ◆ Wildlife Show
- ◆ Historical Displays
- ◆ Career Day
- ◆ High School Forestry Competition
- ◆ Friday Night Banquet
- ◆ Friday Night Auction
- ◆ Golf Tournament
- ◆ Ladies Luncheon
- ◆ Pro Logger Classes



80<sup>th</sup> Annual  
Redwood Empire Fairgrounds  
Ukiah, California  
(707) 443-4091  
[www.rrlc.net](http://www.rrlc.net)



# LOGGING DRONE UPDATE

Some of you may remember in the Bighorn Logging article we printed a picture of a logging drone that Mark Standley was working on.

Mark recently sent us this progress update. He says they are almost ready to put them on the market.



Mark Standley (Right) stands behind the logging drone setup he has developed. Tim Klien (Left) is the pilot.

Special thanks to Mark Standley, Mark Standley, Jr. and Tim Klien for the photos

Today a 3500' layout was strung in about 5 min and had haywire sitting on the landing in less than 20 min. This was strung with one of Mark Standley drones.

## Rigging Shack

(Continued from Page 2)

It is attractive to slip back but you probably won't do it because once a mind is expanded to accommodate a great idea and has embraced plans to make that idea bear fruit that mind will not return to its original size. You have expanded your mind and it will never forget it.

Your decision then is to forge ahead, to work toward and to get that new car. Your goal is solid, your plans are realistic and you are forging ahead with clear rich and detailed pictures to draw you onward.

You have passed the test, "Is my goal worth the cost to me?"

The thing you need now is DESIRE. Desire is to wish for.

Desire is to crave. Desire is; A request; A wish; A longing or a craving.

Desire is a strong emotion, a power packed emotion. An emotion that will keep you going, keep you on track, keep you striving when every other emotion is saying, "let's take it easy, the body is tired and the spirit is weak."

Desire, a wish, a craving. All great achievements are the result of strong desire.

I have yet to meet any person who has achieved who has not had set backs, who has not taken one more step when they felt like stopping and who has not been

(Continued on Page 34)  
**See "Rigging Shack"**

## HELP WANTED

Looking for an experienced  
Processor Operator,  
Loader Operator,  
Feller Buncher Operator,  
and/or a  
Skidder Operator  
*Experienced Only*  
*Wage dependent on experience*  
*Full benefits*

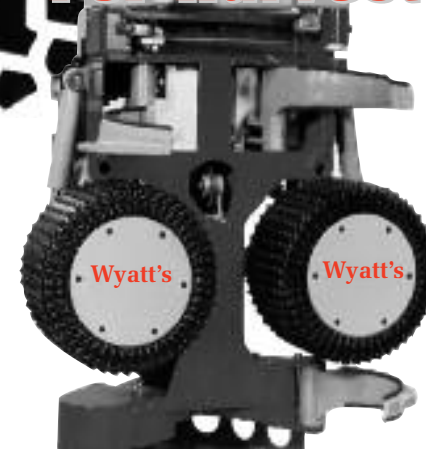
**Volcano Creek**

LOGGING, INC.

Call or Email:  
(530) 367-5629

volcanocrk@ftcnet.net

## FEED ROLLERS RECOVERED For Harvester/Processors



- Starting at just **\$250.00 US**
- All Brands Recovered: Log Max, Waratah, Valmet, Pierce/Denharco, Deere, Fabtek, Risley
- New Wheels Made for Any Processor Head, New or Older Style Heads
- [www.wyattstire.com](http://www.wyattstire.com)
- **Save Money - Give Us a Call Today!**

**Wyatt's** SINCE 1925

Contact: Dave Lowe, Jr.  
(541) 344-3218 • Fax: (541) 344-3221  
390 W. 11th, Eugene, Oregon 97401

Visit us at the  
Oregon Logging Conf.  
Call us for our Show  
Specials



[illegible]



# CROWLEY EQUIPMENT, INC.

**(541) 688-5924 FAX: (541) 688-0704**

**MIKE (541) 954-7643 • ERIC (541) 206-2252 • DAN (541) 914-9222**

4655 Cloudburst Way, Eugene, Oregon 97402



**2016 Tigercat LX830D**  
2,800 Hrs., Tethering Hitch,  
Extended Grousers  
**P.O.R.**



**2011 John Deere 2454D**  
W/Pierce 3348  
7,600 Hrs.  
**\$225,000**



**1996 Diamond D210**  
**\$250,000**



**1995 Thunderbird  
TSY255**

Tilt Cab, Cat  
Engine,  
Lohmann  
Finals  
Eagle  
Carraige,  
Radios.

**Trades  
Welcome!**

## LOG LOADERS

- 2008 CAT 330D
- 1999 CAT 320B
- 1997 CAT 322B
- 1995 CAT 330L W/(2)  
PULLMASTER DRUMS
- 1985 CAT 225 ON RUBBER
- 2013 DOOSAN DX300LL
- 2014 DEERE 2954D
- 2014 DEERE 3754D
- 2012 DEERE 2954D TONG  
THROWER
- 2010 JOHN DEERE 2954D
- 2009 JOHN DEERE 2954D
- 2008 DEERE 2554
- 2008 JOHN DEERE 2054
- 2006 JOHN DEERE 2554
- 2005 JOHN DEERE 3554
- 2004 JOHN DEERE 2054
- 1993 JOHN DEERE 690E
- 2014 HITACHI ZX350
- 2006 HITACHI ZX200
- 2011 KOBELCO SK295
- 2006 KOBELCO SK210
- 2002 KOBELCO SK330
- 2005 KOMATSU PC300HD
- 1999 KOMATSU PC250
- 2015 LINKBELT 350X2
- 2015 LINKBELT 350X2
- 2007 LINKBELT 370LX
- 2006 LINKBELT 210LX
- 2003 LINKBELT 370LX
- 2000 LINK-BELT 3400Q
- 2000 LINKBELT 3400Q TONG  
THROWER
- 1996 LINKBELT 3400Q
- 2015 MADILL 3800C
- 1996 THUNDERBIRD 1240

## PROCESSORS & DELIMBERS

- 2013 CAT 320D RB  
W/WARATAH 622C
- 2001 CAT 330B LL  
W/01 WARATAH 624
- 2014 DEERE 3754D  
W/WARATAH 625C
- 2011 JOHN DEERE 2454D  
W/PIERCE 3348
- 2008 JOHN DEERE 2954D  
W/2010 WARATAH 624C
- 2008 JOHN DEERE 2054  
W/622B
- 2007 JOHN DEERE 2554  
W/PIERCE 3348
- 2006 JOHN DEERE 2554  
W/DM4550
- 2006 JOHN DEERE 2554 RB  
W/WARATAH 622B

## PROCESSORS & DELIMBERS *Cont.*

- 2004 JOHN DEERE 2554  
W/DM4400
- 2002 JOHN DEERE 230LC  
W/DM4400
- 2009 KOBELCO SK260  
W/LOGMAX 7000XT
- 2006 KOBELCO SK290  
W/WARATAH 622B
- 2012 KOMATSU PC200LC-8  
W/LOGMAX 7000XT
- 2006 LINKBELT 240LX W/622B
- 2004 LINKBELT 240LX  
W/PIERCE 3348
- 2003 LINKBELT 240LX  
W/DM4400
- 1997 LINKBELT 3400Q  
WDM3500
- 2007 MADILL 1800LL  
W/WARATAH 622B
- 2005 MADILL 2800B  
W/WARATAH 622B

## FELLER BUNCHERS

- 2016 CAT 552
- 2015 JOHN DEERE 643L
- 2013 JOHN DEERE 959K
- 2009 JOHN DEERE 959J
- 2015 KOMATSU XT450L-2
- 2013 KOMATSU XT450L-2
- 2016 TIGERCAT LX830D
- 2015 TIGERCAT L870C
- 2009 TIGERCAT LX830C
- 2005 TIGERCAT L870
- 2005 TIGERCAT LX830
- 2010 TIMBCO 445FXL
- 2007 TIMBCO 425EXL
- 2006 TIMBCO T445EXL
- 2006 TIMBCO T425EXL
- 2003 TIMBCO T445E
- 2002 TIMBCO T425D
- 2011 TIMBERPRO TL735B  
W/BARSAW
- 2011 VALMET 450FXL

## SKIDDERS / DOZERS

- 2016 CAT 545D
- 2012 CAT 535C
- 2010 CAT 525C
- 2009 CAT 527
- (2) 2003 CAT 527'S
- 2003 CAT 525B W/ESCO  
SWING BOOM
- 1999 CAT 525
- CAT D8H W/WINCH
- CAT D7F W/ESCO SWING  
BOOM
- CAT 977L

## SKIDDERS / DOZERS *Cont.*

- 2015 DEERE 1050K
- 2010 JOHN DEERE 848H
- 2006 JOHN DEERE 848G
- 1988 J D 550G W/RIPPERS
- JOHN DEERE 850 W/WINCH
- 2013 TIGERCAT 610C
- TIMBERJACK 380B
- 1999 TIMBERJACK 560D

## CHIPPERS / GRINDERS

- MORBARK 30RXL

## YARDERS

- CHRISTY HD YARDER
- DIAMOND D210
- KOLLER K702 ON TRACKS
- (2) KOLLER K602'S
- KOHLER K501
- 1999 MADILL 172
- (2) MADILL 071
- (2) SKAGIT 739
- SKAGIT 737
- THUNDERBIRD 6170
- (2) THUNDERBIRD 6140
- (2) THUNDERBIRD TMY50
- THUNDERBIRD TSY-6240
- THUNDERBIRD TSY255
- THUNDERBIRD TY90
- THUNDERBIRD TY-40
- 1995 THUNDERBIRD TTY70

## EXCAVATORS

- 2013 CAT 320D FM
- 2009 CAT 330D W/SUMMIT  
TETHERING SYSTEM
- 2014 DEERE 2154D RB
- 2012 HITACHI 290
- 2005 HITACHI ZX200 LONG  
REACH
- 1996 HITACHI EX270
- 2003 KOBELCO SK210LC RB
- 2006 LINKBELT 370LX RB

## MISCELLANEOUS

- 2007 CAT 140H
- CAT 977L
- EXC. HEEL/GRAPPLE
- 2016 FECON BH80
- 2007 FECON BH80HD
- MEDFORD LOG FORKS
- 2005 TIMBERJACK 1410
- 2008 TIMBERPRO TF840
- 2001 TIMBERPRO TF820E
- 2006 VALMET 890.3
- 2007 WARATAH 624

## PARTING OUT

- 2005 HITACHI ZX250 LL
- LINKBELT 210LX BOOM
- THUNDERBIRD TSY-155



**2015 Deere 1050K**  
W/Rippers, 1,171 Hrs.  
**P.O.R.**



**2014 Deere 3754D**  
w/Waratah 625C, 7,000 hours  
**P.O.R.**



**2015 Link-Belt 350X2**  
3,900 Hrs.  
**P.O.R.**



**2013 John Deere 959K**  
7,000 Hrs.  
**\$230,000**



**2003 Cat 527**  
8 Roller, Lot of recent major  
work orders  
**P.O.R.**



**2009 Cat 330D**  
W/2017 Summit Tethering System  
**Call For More Info.**



**2009 Kobelco SK260LL,**  
10,400 Hrs., W/2010 LogMax  
7000XT 8,600 Hrs.  
**\$145,000**



**2009 Tigercat LX830C**  
Newer Undercarriage, 9,664 Hrs.  
**P.O.R.**



**2003 Cat 527**  
**\$175,000**

[www.crowleyequipment.com](http://www.crowleyequipment.com)



# SHOW AND SELL

Send your Black and White or Color photo and a description of what you are selling (try to keep it within 20 words - 1 item per ad - No Business Names Allowed) and we'll publish it in Show & Sell for just \$125.00. Mail (or email to [logworld@aol.com](mailto:logworld@aol.com)) your information to Loggers World LLC, P.O. Box 1631, Chehalis, WA 98532. Deadline is 5th of the month preceeding publication.

**TMY50SLT**  
Thunderbird Yarder,  
Acme- S28, bugs and  
whistles, \$375,000  
ready to work call Shane  
530-945-1586 H



**ADVERTISE**  
YOUR ITEM IN THIS SPACE  
**\$125<sup>00</sup>**  
**CALL 1-800-462-8283**  
**SPECIAL DEAL:**  
*Get your ad for*  
**\$110<sup>00</sup> if you buy it**  
*on our website:*  
**[www.loggersworld.com](http://www.loggersworld.com)**



**WIDE SAWMILL** - up to 70" wide cuts,  
portable \$17,000 209 532 4974 H

**ADVERTISE**  
YOUR ITEM IN THIS SPACE  
**\$125<sup>00</sup>**  
**CALL 1-800-462-8283**  
**SPECIAL DEAL:**  
*Get your ad for*  
**\$110<sup>00</sup> if you buy it**  
*on our website:*  
**[www.loggersworld.com](http://www.loggersworld.com)**



2014 Hitachi Forester, Like New 2,462 Hrs,  
2X370F Log Loader, 43' Log Loader Front, 66"  
Young Grapples, UC Hi-Wide 9' 7" Gauge, Dual  
Swing Motors, Long Life Zink Free Oil, OSHA  
Certified Guarding, Rear Entry Cab, A/C,  
Call Tim at (360)532-1485 nc

**ADVERTISE**  
YOUR ITEM IN THIS SPACE  
**\$125<sup>00</sup>**  
**CALL 1-800-462-8283**  
**SPECIAL DEAL:**  
*Get your ad for*  
**\$110<sup>00</sup> if you buy it**  
*on our website:*  
**[www.loggersworld.com](http://www.loggersworld.com)**



**2000 Rottne SMV 8 wheel drive**, 16 ton log  
forwarder, 18,500 hours, 4 bunks, 1 set Eco  
tracks, 3 new tires rest 60 % or better. New  
John Deere motor and hydraulic pump at  
17,000 hrs., spare tire on rim, parts and service  
books. \$62,000 call 1-250-558-8515 H

**ADVERTISE**  
YOUR ITEM IN THIS SPACE  
**\$125<sup>00</sup>**  
**CALL 1-800-462-8283**  
**SPECIAL DEAL:**  
*Get your ad for*  
**\$110<sup>00</sup> if you buy it**  
*on our website:*  
**[www.loggersworld.com](http://www.loggersworld.com)**



**ZX350 II Road Builder**, forestry cab, and  
HTH 624 Waratah dangle head, 2007, 9017 hrs,  
paired new \$118,000 for package, in  
northern CA call Shane 530-945 1586 H

## Rigging Shack

(Continued from Page 34)

advised to, "give it up and quit knocking your head against the wall." Desire, strong desire, is what kept them going.

Desire is the mother and fore-runner of many other good strong emotions. Such as Enthusiasm, such as belief and faith. Strong desire generates enthusiasm. Enthusiasm causes one to keep on keeping on, to seek out knowledge, to acquire and work with correct pictures, to keep the vision strong and to concentrate

upon what you desire.

Desires can be for your good or they can be for things that aren't good for you. Adolph Hitler had great goals and strong intense desires and he almost pulled off what he wanted to do and almost reached his goals. It cost the lives of thousands to stop him. All desire is not for good. A healthy appetite can cause an unhealthy body.

Almost always when one talks to someone about goals and desires something is apparent. Almost always the Goals are Positive and the Desires are good.

The Desire creates the goal and the goal motivated the desire. You won't work for something that won't benefit you, that won't meet your cravings, your desires. When you have carefully sought out your goals and have written them down; when you have looked deeply into things and have made written plans for achieving those goals; when you have stopped and researched again and looked it all over and have asked, "Is this worth what it will cost me?"; when you have answered in the affirmative and have whipped up your desire and

have determined to move ahead on schedule and to the best of your ability then --- then you are going to be hard to slow down or to stop. You are in the grip of a goal you have selected, following a plan you have drafted and following the desire you have chosen and have given power to.

You can be slowed down, you may have to change some things but you need never be stopped

Strong Desire is a boss that'll never let you rest on the wrong side of your goals.





# COMING EVENTS

## FEBRUARY

**8-10**


### 2018 SIERRRA CASCADE FOREST PRODUCTS & CONSTRUCTION EQUIPMENT EXPO

SHASTA DISTRICT FAIRGROUNDS  
ANDERSON, CALIFORNIA

FOR INFORMATION : (530) 222-1290

**22-24**


### 2018 OREGON LOGGING CONFERENCE

LANE COUNTY CONVENTION CENTER  
AND FAIRGROUNDS  
EUGENE, OREGON

FOR INFORMATION CALL: (800) 595-9191

## MARCH

**15-17**


### REDWOOD REGION LOGGING CONFERENCE

REDWOOD EMPIRE FAIRGROUNDS  
UKIAH, CALIFORNIA

FOR INFORMATION CALL: (707) 443-4091

**16-17**


### WCLA ANNUAL MEETING

NORTHERN QUEST RESORT AND CASINO  
AIRWAY HEIGHTS, WASHINGTON

FOR INFORMATION CALL: (800) 422-0074  
Ext 103

**SEND EVENT NOTICES TO:** Publisher, Loggers World Magazine, P. O. Box 1631, Chehalis, WA 98532-8425. Please include your event's symbol. Items used at discretion of the publisher.

**Deadline for March 2018 issue: FEBRUARY 7th.**

# Advertiser's Index

460450 B. C. LTD. (DBA KMC) .....	10	LOCK & LUBE.....	9
ACME MANUFACTURING..	116	LOGGERS WORLD IRONMART.....	32
APPELO ARCHIVE CENTER ..	27	LOGGERS WORLD SUBSCRIPTION .....	35
AUTOMATED BIOMASS SYSTEMS.....	14	LOGGERS WORLD SUSPENDERS.....	29
BLOUNT - OREGON CUTTING SYSTEMS.....	15	MADSEN'S SHOP & SUPPLY, INC.....	8
BOMAN IND. ....	12	MONTANA TRACK CLAWS ....	18
BUSINESS EQUIPMENT LOANS .....	16	MPI EQUIPMENT .....	11
CASCADE TRADER .....	5	N. C. MACHINERY Co.....	3
CASHMAN EQUIPMENT .....	3	OLIVER HAMMER CLOTHES SHOP .....	9
CATERPILLAR .....	3	PACIFIC FIBRE PRODUCTS, INC.....	9
CC HEAVY EQUIPMENT INC..	9	PAPAC ALASKA LOGGING ....	24
COWLITZ RIVER RIGGING ....	26	PERSONS ENTERPRISES.....	24
CROWLEY EQUIPMENT INC .	33	PETERSON.....	3
CT MUSIC .....	28	ROTHENBUHLER ENGINEERING .....	20
DOUBLE D LOGGING Co INC	14	SCHAEFER ENTERPRISES ....	26
DUKE'S EQUIPMENT.....	23	SCHMUNK'S TIRE CENTER, INC.....	22
EAGLE CARRIAGE & MACHINE INC.....	10	SHOW & SELL.....	34
EQUIPMENT SEAT COVERS LLC .....	31	TERRY AKINS.....	20
FEENAUGHTY MACHINERY Co.....	17	TRIPLE T EQUIPMENT .....	32
FELLOWSHIP OF CHRISTIAN LOGGERS .....	27	VOLCANO CREEK ENTERPRISES, INC. ....	31
FRALEY TRACTOR, INC .....	21	WALLINGFORD'S INC. ....	18
FULL CIRCLE FINANCE .....	6	WARATAH FORESTRY ATTACHMENTS .....	2
GEM .....	7	WESTERN STATES .....	3
HIGH CASCADES AGENCY....	12	WILSON EQUIPMENT.....	19
HOLT OF CALIFORNIA .....	3	WYATT'S .....	31
INTERMOUNTAIN LOGGING CONFERENCE.....	22	ZENDER EQUIPMENT .....	13
IRELAND, INC.....	17		
KING AG. MUSEUM.....	25		

# SUBSCRIBE TODAY!

## LOGGERS WORLD

*"The Logger's Magazine," is  
concerned with what  
concerns loggers*

12 Issues – 1 Year Subscription

# \$25<sup>00</sup>

WA Residents pay \$27.40 w/tax  
Inside U.S.A.



Send your check or Money order to:

LOGGERS WORLD LLC  
P. O. Box 1631  
CHEHALIS, WA 98532



Offer expires  
December 31, 2018

- ☐ \$25.00 for 1-Year Subscription    ☐ \$50.00 for 2-Year Subscription  
☐ \$100.00 for 4-Year Subscription

WASHINGTON RESIDENTS PAY \$27.40, \$54.80 OR \$109.60 w/SALES TAX

NAME:.....

ADDRESS:.....

CITY:..... STATE:..... ZIP:.....

PHONE: (       ) .....

(ALLOW 5 WEEKS FOR DELIVERY OF FIRST ISSUE)