

LOGGERS WORLD

VOLUME 53 NUMBER 7

To Advertise Call: (800) 462-8283

JULY 2018

TDC
Excavation & Logging



ESTACADA TIMBER FESTIVAL

ESTACADA, OREGON

FOR INFORMATION: <http://estacadatimberfestival.com>

**July
4**



AMBOY TERRITORIAL DAYS & LOGGING SHOW

AMBOY, WASHINGTON

FOR INFORMATION: info@tdays.org

**July
13-15**



DARBY LOGGER DAYS

DARBY, MONTANA

FOR INFORMATION: <http://darbyloggerdays.com/>

**July
20-20**

LOGGERS WORLD LLC
P. O. Box 1631
CHEHALIS, WA 98532-8425

PRST STD
U.S. POSTAGE
PAID
PERMIT NO. 72
LEWISTON, ID

Finley's Rigging Shack

"Classic"



Finley Hays was well known for his ability to tell a good story. His unique perspective was gained by growing up in a logging family, and after starting *Loggers World*, talking to loggers all over the country. Finley went on to his Heavenly Reward in 2008 but we have almost 40 years of his writing and storytelling to enjoy. Finley's Rigging Shack remains one of the most popular features of *Loggers World* and we think that is appropriate for the man that put so much of his life into his vision of a "Loggers Magazine".

Originally Printed in July 1982

Last month the title of Rigging Shack was, "YOU ARE NEVER OUT OF A JOB!"

Since that was published I have been questioned about this Job Hunting and Job Attitude concept. I've been congratulated and I've been disagreed with.

I have had the phone ring and people say something like, "If you think it is so easy to find a job then you just trot right out and find me one."

This all leads me to believe there should be more discussion about this important and touchy subject.

One thing I do know. Very few people come to us looking for work. Yet we usually need help of some kind or another and we are in the phone book and we are right on the highway. Ten years ago we had two or three serious job hunters

calling on us every month or so. We ran one ad in the paper, think that was about 10 years ago, and we got about two dozen replies. We chose one lady out of the two dozen applicants to work for us and then we got calls from people threatening to sue us because we did not hire them, a call from some Union people and some calls from some lawyer types. We have never advertised for help since --- and don't intend to do so again.

By sharing this information with you I am trying to make a point. The point is that if someone came to us with the right skills, attitude and a positive mental realistic concept of our business; if that person had the skills, the attitude and a plan of procedure that would help us we would be in the market to hire him or her or them.

This is true of us. It is probably true of almost any business up and down the street that you travel. If you know something about that business and you have the skills

and you have a plan to help that business at the very least they will be glad to talk to you.

One time there was a man in Detroit who went broke in the business of building houses. He was 60 grand in the hole, had dozens of creditors, had to sneak in the back door and his wife told him there was nothing the house to feed he or her or the kids.

He knew a fellow who was a sales manager of a Chevrolet dealership and he went to him and begged for a job selling cars on commission. He was desperate, he was ashamed and he was hungry. He stayed late and a man walked in and he sold him a car and the boss advanced him \$50.00 against his commission. He bought a bag of groceries and took it home.

He went at car selling giving it all he had in energy, imagination, good sense and he gave it everything. He knew there was always something to do and that no one had done this job as well as it could be done.

In desperation he went to the phone book and started calling people attempting to set up an appointment to sell cars. He wrote letters to people he had never met nor heard of and tried to sell them a Chevrolet. He never joined in the Salesmen's bull sessions, he never joined in the coffee breaks. He went up and down the street meeting people, giving them a brochure about the Chevrolet cars and he gave out over 500 business cards a day.

What happened? Well times were tough and he dug right in and he used all his imagination and all his time. Twelve years later the book of records listed him as



FINLEY HAYS

the "World Champion Salesman." He had averaged selling 5 cars every working day for 12 years. He was making in excess of 200 thousand dollars a year selling cars.

It don't say it but I'll bet that Joe Girard was also the Champion of hearing the word "No" without giving up. It

may be that if you sell one car you must make your sales talk to 10 people. Which means you have heard "No" nine times to every "Yes" you hear. I've heard it said that your success or failure is determined largely by how many times you can be told NO without it causing you to give up or lose your spirit.

I don't know of a single solitary person running a successful business that hasn't heard NO a lot more than he or she wanted to.

If I were looking for a job I think I'd buy Joe Girard's book, "How to sell anything to anybody" and then I'd use the same tactics and toughness and spirit he used to sell motor cars. I can visualize myself going down the names in the phone book and saying something like, "Do you know of anyone that has a job for anybody?"

Maybe it would be a good idea to get other people in it with you so that if you found a job you didn't want or couldn't do you could give it to someone else.

During the heart of the depression a man from San Francisco who owned a string of Auto Parts stores made a speech to the Chamber of Commerce in San Jose, California. As I remember it he said in his speech, which was about find-

(Continued on Page 7)
See "Rigging Shack"

IN THIS ISSUE



ON THE FRONT: Devin Toepelt Runs the John Deere 2954 with a Waratah 622 processing head. Devin has been with TDC for 4 years.

See "Stacking up" starting on Page 4

2. RIGGING SHACK

"Classic" From July 1982 by Finley Hays

4. STACKING UP

TDC EXCAVATION AND LOGGING. by Brandon Hansen

23. SUMMARY JUDGEMENT

WESTERN DAVID FIGHTS ENVIRONMENTAL GOLIATH IN RURAL UTAH

by William Perry Pendley

24. BLAST FROM THE PAST

BY QUINN J. MURK FOR LOGGERS WORLD

26. IRON MART

28. SHOW AND SELL

LOGGERS WORLD

Published by LOGGERS WORLD LLC

Founded in 1964 by Finley Hays

Phone (360) 262-3376



Member and Supporter of the
American Loggers Council Since 1994



PUBLISHERS.....Kevin & Nancy Core
EDITORS EMERITI.....Finley Hays, Mike Crouse
EDITOR/WRITER.....Brandon Hansen
ADVERTISING.....Kevin Core
OFFICE MANAGER.....Nancy Core

POSTMASTER: Send address changes to:

LOGGERS WORLD LLC,
P. O. Box 1631, Chehalis, WA 98532-8425

E-Mail: logworld@aol.com

SUBSCRIPTION RATE (In U.S.A.):
\$25.00 per year; Two years for \$50.00

LOGGERS WORLD LLC cannot and does not assume responsibility for the contents of any advertising in *Loggers World*. The representations made by advertising is the responsibility of the advertiser and not *Loggers World*. *Loggers World* does not knowingly accept advertising that is false or misleading. The limit of *Loggers World* liability in case of a mistake made in advertising copy by *Loggers World* will be the charge of the actual space containing the error or less for that particular advertisement.

558/558 LL FOREST MACHINE

MORE LOADS PER DAY

WITH SWING TORQUE AND HORSEPOWER TO SPARE

BUILT FOR IT.™

POWERFUL LOGGING SOLUTIONS



**KNUCKLEBOOM
LOADERS**



SKIDDERS



**FOREST
MACHINES**



**WHEEL FELLER
BUNCHERS**



**TRACK
HARVESTERS**



**TRACK FELLER
BUNCHERS**

Our goal is to help you move more loads at a lower cost. The all new 558/558 LL is redefining forestry machine performance, through improved power, efficiency, operator comfort and an optimized work tool system. Key features include:

- Increased engine horsepower and swing torque add power and boost performance under load
- Component layout, back-to-back main hydraulic control valves and engine speed control maximize efficiency
- Cooling capacity increased 33 percent for trouble-free operation
- New premium rear entry cab and side entry cab enhancements improve operator experience

Look to your Cat® dealer for financing and all the machines you need for sustainable harvesting and land management, forestry road construction, hauling and millyard. Total support from one source.

www.cat.com/forestry



www.cashmanequipment.com
Nevada and Eastern Sierra
800-937-2326



www.holtca.com
Central Northern California
800-452-5888



www.ncmachinery.com
Western and Central Washington
800.562.4735 and
Alaska 800.478.7000



www.petersoncat.com
Northern California, Western
Oregon and Southwestern
Washington
800-452-7676



www.westernstatescat.com
Idaho, Western Montana, Eastern
Washington, Eastern Oregon and
Northwest Wyoming
800-852-2287

TOPPING IT OFF

Lots and lots of pieces in this short logger load. It all counts!



STACKING UP

TDC Excavating and Logging has lots of iron out in the woods, getting the job done around Pe Ell

Photos by Kevin Core
Story by Brandon Hansen
For Loggers World

When contemplating the amount of equipment he has, Troy Cox has a good chuckle.

"I guess I don't know how to quit," Cox said.

TDC Excavation and Logging, based out of Pe Ell, has a great deal of iron. Cox owns five processors, five loaders - all John Deeres, two skidders - CAT 545s, one Tigercat feller buncher, seven Kenworth T-800s log trucks and seven excavators - also John Deeres. The company also has about 20 employees to run them.

"Just about whatever it takes to get the job done," he said.

Cox comes from a logging family, as his grandfather, fa-

ther and brothers work or have worked for Weyerhaeuser through the years. Troy worked for Weyerhaeuser for 15 years, starting by setting chokers and then moving into operating a shovel.

"I was pretty much set on operating a shovel that's what I wanted to do," Cox said.

He also ran a dozer when needed. Growing up, Cox said his dad had always discouraged his kids from going out in the woods, but it apparently didn't do much good as Troy found himself loading a log truck driven by his father, while his brothers were down in the brush setting chokers. After many years of this, another opportunity opened up and he said "he left the family business."

Cox left Weyerhaeuser on good terms and went to work at

Centralia's Trans Alta coal mine - the only one in the state of Washington. He was usually operating the D11 dozer and would work 12-hour shifts from 6 p.m. to 6 a.m.

Sometime he would get envious seeing loggers working on land Trans Alta would be moving in on to mine.

"Once you're in the woods it kind of sticks with you and you always want to be in the woods," Cox said.

Trans Alta shut down the mine after Cox worked there for about three years and he moved back into the timber industry.

"At that point I had always wanted to run my own business so I got an Hitachi EX60 and a dump truck with a trailer," Cox said.

He started in 2006, doing roadside brushing jobs for Wey-

erhaeuser for a few months when the local PUD had some work for him and he got his first employee. He purchased a couple of log loaders after that and then moved from handbucking to getting his first processor and now has all Waratah heads.

While having trouble getting enough logs trucks to haul about eight years ago, Cox got into trucking as well to keep things rolling to the mill. About two years ago he also got his Tigercat feller buncher.

"I just wanted to be more self-sufficient and not have to wait for someone else to haul or bring in their feller buncher," he said.

Most employees have been

(Continued on Page 9)
See "TDC"

DOOSAN**Authorized Dealer**

Sales, Parts & Service
Your #1 Established Forestry Equipment Dealer

**Cascade Trader has a
Complete Line of new
Doosan Log Loaders, Excavators
& Wheel Loaders for your
Logging & Construction Needs!**

Cascade TRADER Inc.
EQUIPMENT SALES - LOGGING & CONSTRUCTION



**Ask
About Our
Special Financing:
Up to 60 Months**

All offers
subject to credit approval



TIGERCAT LS855C Levelling LL,
7257 hrs\$275,000



Doosan DX300LL-5 Log Loader,
NEW IN STOCK



CAT 980G, Medford Log Forks
.....\$59,500



Doosan DL420-5 Wheel Loader,
NEW IN STOCK



DOOSAN DX85R Excavator
New Inventory



Kenworth Log Trucks,
details on request (NAP)



DX300LC-5 Excavator
NEW INVENTORY

LOG LOADERS

CAT 235C Log Loader, Pierce Boom	\$17,500
CAT 568 Log Loader, 2012	POR
DOOSAN DX225LL Log Loader	\$119,500
DOOSAN S300LL Log Loader	\$85,000
HYUNDAI 320LC-9 LL, excellent	\$145,000
HYUNDAI 320LC-9 LL, low hours	\$225,000
JD 200LC LL, Forestry Cab	\$49,500
JD 2954LL Log Loader	POR
JD 3554 Log Loader, rear entry	POR
KOBELCO SK200LC Log Loader	POR
KOBELCO SK210LC Log Loader	\$64,500
KOBELCO SK220LC Log Loader	\$35,000
KOBELCO SK260LC LL, For Cab	\$125,000
KOEHRING 6625 Log Loader	\$18,000
KOMATSU PC220LL-7, 2004	\$89,500
KOMATSU PC300HD Log Loader	\$37,500
LINKBELT 290LX LL, '08	\$79,500
PRENTICE 610 LL, KW Truck Mt	\$29,500
THUNDERBIRD 1238 Log Loader	\$39,500

FELLER BUNCHERS, PROCESSORS

CAT 320B/Waratah HTH622B	\$75,000
CAT 322C/Pierce 3348 Stroker	\$55,000
DOOSAN DX300LL-5/Pierce GP	POR
JD 792D/Pierce 3345 Stroker	\$59,500
KOBELCO SK260LC, Ponsee Harv	POR
KOBELCO SK290LC, Rear entry, Keto 800	\$125,000
KOMATSU PC128/Log Max Harvester	\$39,500
KOMATSU PC220LC/Pierce 3348 Stroker	\$119,500
KOMATSU 450XT FB/Quadco 24" 360	\$205,000
KOMATSU 450XT Quadco 24" 360, low hrs	\$269,000
MADILL 2800/Denharco DM3500	POR
THUNDERBIRD 1236/Denharco DM3500	POR
TIMBCO T445C, Quadco 22", nice!	\$79,500
TIMBERJACK 2628, Bar Saw	\$29,500
WARATAH HTH-623C, NEW Inventory	POR

TOWERS & YARDERS

CHRISTY Yarder, Truck mount	\$49,500
KOBELCO SK330LL "Yoder", Must See!	POR
LINKBELT 350X2/HTH624C 360	\$117,500
LINKBELT 370LX LL "Yoder"	\$112,500
MADILL 071, 3-Guys, 8V71	\$85,000
MADILL 071, 4-Guys, 8V71, w/Rigging	\$107,500
MADILL 071, 4-Guys, 8V71T, nice	\$119,500
MADILL 071, water on skyline, nice!	POR

PSY-200, Self-Propelled, nice yarder	\$199,500
SKAGIT BU-80C, T-90 Trailer Mount	\$32,500
SKAGIT GT3 Track Mount	POR
THUNDERBIRD 6140 Swing Yarder, nice	POR
WA 78-40 Swing Yarder	\$42,500
WA 127W, T90, Trailer Mnt, reduced	\$24,500
WA 137W Slackline, T90, reduced	\$110,000
WA TL6 3-Axle SP, 50' Boom	\$29,500

EXCAVATORS/DOZERS/GRADERS**WHEEL LOADERS/SKIDDERS**

CAT D4H TSK Track Skidder	\$49,500
CAT 14E Grader	\$14,500
CAT EL240B Excavator	\$18,500
CAT 966D, Medford Log Forks	\$49,500
CAT 980G, Medford Log Forks	\$59,500
DOOSAN DX140LC-5, like new	\$135,000
DOOSAN DL400 Wheel Loader	POR
FIAT-ALLIS 8, Winch/Arch	\$18,500
FMC 210 Track Skidder, Grapple	\$34,500
GARRETT 25 Skidder, Cummins	\$12,500
JD 200D Excavator	\$45,000
JD 2454D Rd Bldr, Excav, low hrs	POR
JD 892D Excavator	\$39,500
KMC Track Skidder, Grapple, low hrs	POR
LINKBELT 3900Q Excavator, Bucket/Thumb	\$27,500
MADILL RB500 (180 size) Excav, guards	\$45,000
MOUNTAIN Logger ML150, Clark Winch	\$16,500
MOUNTAIN Logger ML150, Cummins	\$12,000
TIMBERJACK 380 Grapple Skidder	\$39,500
TIMBERJACK 404 Skidder	\$8,950

CARRIAGES & MISC

CAT HF201 22" Disc Saw, tilt, low hrs	\$22,500
CEC Portable Jaw Crusher, Trailer Mnt	\$85,000
DANZCO PT20 Pull Thru Delimber	\$10,500
DIAMOND Z 1460 Tub Grinder, 2010	\$289,500
GENERAL Turkey Rack, like new	\$9,000
KETO 804 Processing Head	POR
MORBARK 30RXL Chipharvester	\$110,000
OLATHE 10' Tub Grinder	\$39,500

TRUCKS

LINCOLN 3-Axle Log Trailer	\$12,000
KW Log Trucks, details on request	POR
KW T800 Dump, '06, ISX. Low miles	\$62,500
PEERLESS 3-Axle Log Trailer	\$19,500
PETERBILT Dump '92, 3406	\$35,000



DOOSAN Log Loaders
LOTS OF INVENTORY!



**Doosan DX225LL-5 "Road
Builder"**P.O.R.



**WASHINGTON 137W Slackline
Yarder, excellent!**\$110,000

KETO • WARATAH • SOUTHSTAR • EAGLE CARRIAGE

Rich Lennox (360) 508-0192
Shannon Pesicka (360) 507-0542
Mike Duch (360) 880-6955

Jim Wark (360) 623-5219
Cooper Brunoff (360) 880-7534
John Griffin (425) 210-9702

Tony Foglio (360) 520-7084
Colton Moorhead (360) 827-0262

Traci Brunoff • Sales Coordinator: (360) 880-7531

www.cascadetrader.net



Find us on
Facebook

(360) 748-1182

fax (360) 748-1198 •
Located at Exit 79 off I-5
1380 NW State Ave., Chehalis, WA 98532



A MAN AND HIS PROCESSOR

Devin Toepelt runs the John Deere 2954 with a Waratah 622 processing head. Devin has been with TDC for about four years. **BELOW:** Troy Cox of TDC Excavating and Logging still smiling at the end of the day when he dropped off the Loggers World photographer.



STIHL® Chain Sale

While supply lasts, get a 100' roll of STIHL® 3/8" square-ground chisel saw chain for only:

\$299

Get yours today!



The sale is on our most popular types:

#36RSLF .063 Skip-Tooth
#33RSLF .050 Skip-Tooth
#36RSL .063 Full-Comp
#33RSL .050 Full-Comp

High-Quality Swiss Made Saw Chain -- from a Company You Know & Trust -- at a Value Price.

MADSEN'S
SHOP & SUPPLY INC.
Centralia, Washington

☎ 360-736-1336
Information Calls

☎ 800-822-2808
Toll Free Calls

www.madsens1.com



Need Financing? We Can Help!

We Finance Loaders, Trucks, Skidders, Trailers, etc.

- Working capital available
- Start-up program for under 2 years available
- 1st payment only
- 3,4,5 year financing
- 150K application only
- Finance any equipment or attachment...no age requirement
- Personal one on one financing process
- 27 years' experience in the financing industry

Isn't it time you made an investment in your machinery?

Call Doug Powell Today!

888-223-2600 • dee@fullcircellc.us

After hours cell: 509-393-5111

11 Spokane Street - Suite 306, Wenatchee, WA 98801 • www.fullcircellc.us



CC HEAVY EQUIPMENT



1999 CAT 525 Skidder with Single Function Arch / ESCO Grapple & Winch, 10,900 Hrs., Runs & Operates Like it Should, 30.5 X 32 Tires in Great Shape\$50,000



1997 Komatsu PC-400-6LC Excavator with Thumb, 7,400 Hrs., U/C 85%+, Recent Track Adjusters\$59,000



2002 Case CX 330 Excavator, 9,687 Hrs., Geith Bucket/ Shop Built Hydraulic Thumb, U/C 80% +, Triple Bar Grousers, 78K Weight, Cummins Engine, Nice, Tight Machine!..NEW PRICE!.....\$69,900



2009 Koller K301T Yarder and 1995 John Deere 7600 Tractor, Excellent Maintenance, Comes with Koller Carriage and Talkie Tooters, 1,200 Ft. of 5/8" Sky Line, 1,700 Ft. of 3/8" Skid Line\$75,000



98 Linkbelt Yarder, Holds 1800' of 5/8" on 2 Drums, 3306 Cat with Recent Rebuild on Injection Pump & Head, s Speed Allison Trans, Chain

Drive, Main Line Drum has been Sped Up. Comes with Talkie Tooters and Handheld with Base in Cab. Ready to Yard, Very Fast Machine. Comes with Acme 10 SkyCar for \$99,000



2006 Madill T2250B Feller Buncher With a Madill 360° Hot Saw, 11,800 Hrs., New U/C, New Crate Cummins Engine With 600 Hrs., Recently Through Shop, Recent Finals & Drives, Levelling Cylinders & Saw Head Work, Exc. Maintenance!...NEW PRICE!\$170,000



1997 CAT 322CL, 19,000 Hrs., Log Max 7000 Head, Hyd. Pump Has 5,000 Hrs., SureGrip Controls, New Injectors & Lines Recently, \$6000 Just Invested into New Logmax Computer & Measuring Sensors, Ready to Work!.....NEW PRICE!.....\$69,000



1962 Austin Western 300 Super Grader, Detroit Engine, Hydraulic Controls\$7,000



2013 LinkBelt 290 X2 Log Loader. 9900 Hours. Good Running Machine\$169,000



1998 Timberjack 1270B Harvester With 746C Head, Brand New Front Tires, Comes With Parts Head, Excellent For Cut To Length\$49,000



1999 John Deere 748 GII Skidder. Fixed boom grapple, decent rubber with 4 good chains. Enclosed cab. New transmission 02/2016. New hydraulic pump 02/2017. Currently working everyday.....\$45,000



2012 Kobelco SK350 Log Loader, 5,400 Hrs., Jewell 63" Grapple, U/C 70%+, Nice Machine! NEW PRICE!!!.....\$200,000

NEW AND USED SKIDDER TIRES AND CHAINS AVAILABLE!



2012 John Deere 2454D with Waratah 622B Processor, 9,900 Hrs., U/C 75%+, Currently WorkingNEW PRICE \$169,000!!!



1998 Kobelco SK200LC Processor Equipped With A 2004 Waratah HTH 622 Warrior\$69,000

Quadco 22" Hot Saw Head, 40 Degree Lateral Tilt \$18,000



2007 Gyro-Trac GT-25XP, 1,320 Original Hrs., Like New Condition, Cummins 8.3, Runs Great, Tight Machine, Complete Uptime Kit For Head and Tracks, Comes with Pallet of Extra Track and Blade Parts.....NEW PRICE!\$99,000



Danzco PT20 Delimber, Used very little. Very straight, Job Ready....\$9,500



1999 Timbco 445D with Waratah 230 Processor Head, 10,500 hours, Runs Great! 8.3 Cummins, Strong U/C, Nice Processing Setup \$69,000



1997 CAT D5M LGP Crawler Dozer, 9,765 Hrs., 6 Way Dozer, Rear Hitch and PTO Installed, U/C 65%+, Sprocket Segments at 90%, New Computer & Transmission Service Done by Peterson CAT, Nice Running CAT!\$46,500



Skylead Yarder with 2010 Super Eaglet, 5.9 Cummins with Allison Trans., Comes With All Lines, Currently Working \$119,000

CCHEAVYEQUIPMENT.COM

Dallas/Salem Rickreall, OR

Carl Cornthwaite • 503-507-7230 • carl@ccheavyequipment.com
Lincoln Cornthwaite • 971-901-1333 • lincoln@ccheavyequipment.com

Rigging Shack

(Continued from Page 2)

ing jobs, that there were 500 jobs that could be dug out in that city.

Of course people didn't want to hear this and they reacted to his statement with disbelief and some antagonistic feelings and expressions.

He offered to bet them he could find those jobs. So he worked with the Chamber of Commerce and they set up a big office and got in the phones and so forth and advertised for people who were hunting work to come see them.

Now you must realize that in those days the government weren't running the employment agencies. There was no government help, no job finding facilities, no unemployment and at that time I never knew anyone who worked for the government.

What there was were businesses who made it their business to bring together the employer and employee. One of the famous outfits of this kind in logging circles was Archie McDougal of Seattle.

Archie McDougal specialized in loggers but different employment agencies specialized in different sorts of jobs, such as office work, Restaurant people and so on. They were called 'Employment Agencies,' 'Slave Markets'

(Continued on Page 26)
See "Rigging Shack"

PACIFIC FIBRE PRODUCTS

WANTED

Alder, Maple, Douglas Fir, Cedar Hemlock, Cottonwood PULP LOGS

Land & Timber or Timber Only Paul Hadaller • 360-431-9661

Rob Vance • 360-355-2817 P.O. Box 278, 20 Fibre Way, Longview, WA. Office: 360-577-7112

WE ARE NOW PURCHASING LOGS IN MOLALLA, OREGON!

Oliver-Hammer Clothes Shop

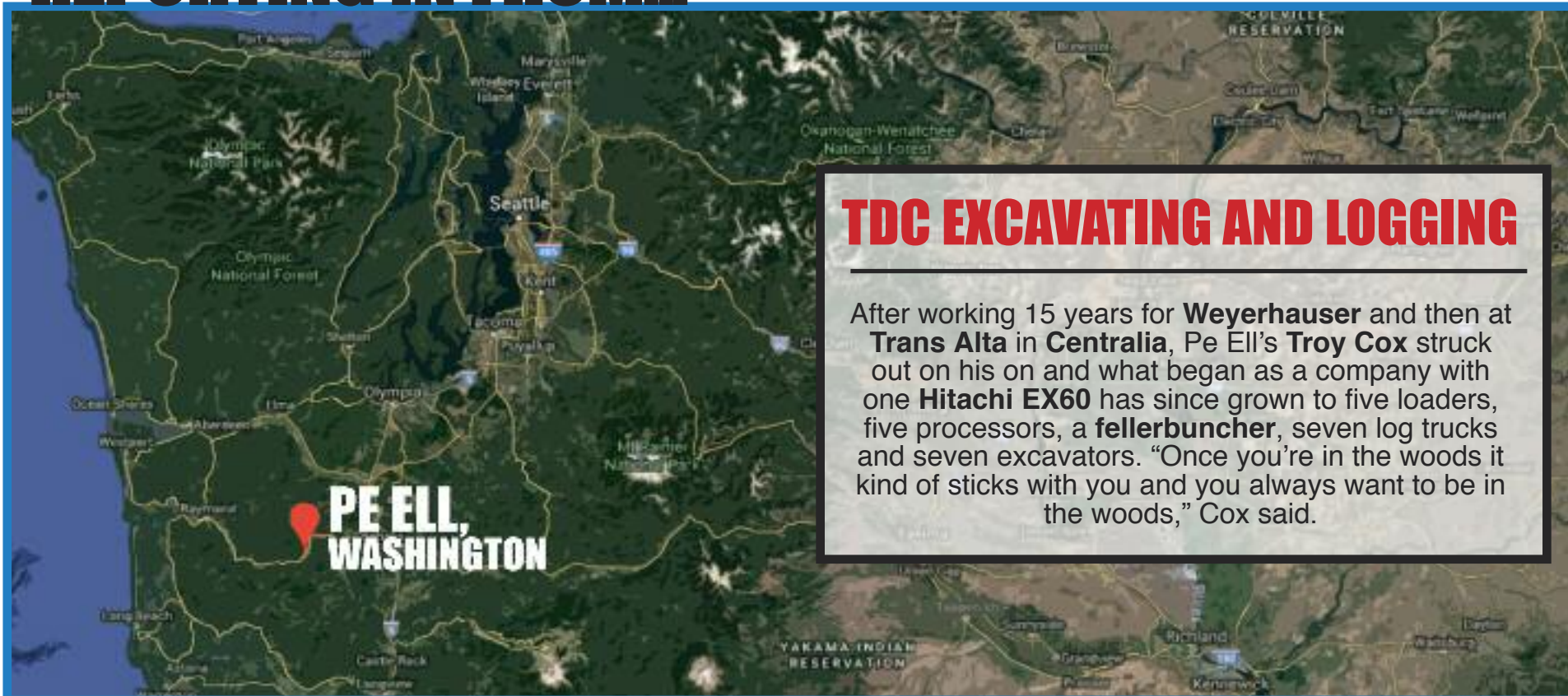
Clothing the Working Man for 97 Years

Wesco Caulk Boots, Redwing, Carolina, Carhartt, North Star Gloves, Hickory Shirts, Logger "Riggin" Jeans and a Whole Lot More

(360) 855-0395

821 Metcalf, Sedro Woolley, WA 98284

REPORTING IN FROM...



TDC EXCAVATING AND LOGGING

After working 15 years for **Weyerhaeuser** and then at **Trans Alta** in **Centralia**, Pe Ell's **Troy Cox** struck out on his own and what began as a company with one **Hitachi EX60** has since grown to five loaders, five processors, a **fellerbuncher**, seven log trucks and seven excavators. "Once you're in the woods it kind of sticks with you and you always want to be in the woods," Cox said.

WRECKING LOGGING EQUIPMENT

EXCAVATORS • CRAWLER TRACTORS • ROCK TRUCKS • LOADERS • GRADERS



Parting Out

2007 Cat 324DFM



Parting Out

2005 Link-Belt 370LX



Parting Out

2006 Cat 950G II



Parting Out

2013 Deere 225DLC



Parting Out

2004 Timbco 445EXL



Parting Out

1996 Hitachi EX400LC3



Parting Out

2012 Deere 135D



Parting Out

2004 Deere 953G



Parting Out

2005 Kobelco ED150



Parting Out

2004 Deere 200CLC

FRALEY TRACTOR, Inc. WRECKING DIV.

(509) 884-7117 • FAX (509) 884-3959 • fti2@nwi.net • 1850 GRANT RD., E. WENATCHEE, WA 98802

CAT EXCAVATORS

314C; 315BL; 320LL; 320BL; 320C;
322CL; 324D; 325C; 325L; 330BL;
345BL; 345CL; 350L

CAT TRUCKS

D25D; D250E; D300E; D400D

CAT SKIDDERS

D5H; D4H; 525; 527; 525C

CAT SCRAPERS

615, 621E

CASE

821; 9030B; 9040B; 9050; 9050B;
9060B

GROVE

RT745

LINK-BELT

210LX; 240LX; 290LX; 350LX;
370LX; 5800 CII-Q; 6000Q

KOBELCO

ED150; SK290LC6; SK200LC IV;
SK400LC IV; SK330

JOHN DEERE

120C; 135D; 160DLC; 200DLC;
225DLC; 2554; 330CLC; 350DLC;
450DLC; 550H; 544J; 544G;
600CLC; 624G; 644H; 644G; 648GII;
710D; 750B-C; 744H; 753GL;
772BH; 844J; 850J; 992D-ELC

SAMSUNG

SE 350LC2

TIMBCO

T425B-C-D; T445B-C-D; T445EXL;
475D; 475EXL

TIMBERKING

TK722; TK732; TK1162

KOMATSU

PC120-6; PC130-6; PC138US-2;
PC220LC7; PC160LC-7; PC200LC-6;
PC220-6E; PC228USLC-3;
D155AX5; D355A; WA 200-1;
WA180-1; WA400-1; WA320-1;
WA180-3; WA250-3; WA500-1-3-6

TIMBERJACK

608; 628; 1210B; 2628; 1270B

HITACHI

ZX27U; ZX120; EX150; EX160;
ZX200LL; EX200-5; EX200LC3;
EX220-3; ZX270LC3; ZX330
ZX350LC; EX330LC5; EX400LC3;
ZX450LC; EX550LC5; EX700;
EX750-5; ZX850LC3

VALMET

EX10; 500T; 860; 892

VOLVO

A25C 6x6 Rock Truck; L330C;
L120E; L180C; L220E

WE BUY HEAVY EQUIPMENT FOR PARTS AND RESALE...CALL US!

Visit us on the web at: www.fraleytractorinc.com



(Continued from Page 4)

with the company for eight to nine years and range in age from their 20s to 70s, but Cox admits he does have some issues with the younger generation wanting to come out in the woods and work.

Jake Evans has operated shovels and processors for TDC for 10 years. Dave "Griz" Seau-nier operated a brusher before moving to truck and had been with the company for 10 years.

Devin Toepelt also joined the company about five years ago right out of high school.

Jeff Miller has also been with the company for eight years.

"I don't have many guys that have been with the company less than five years," Cox said.

TDC does a lot of right away work for Weyerhaeuser out of the Aberdeen and Pe Ell camps along with the St. Helens tree farm. Along with that, Cox keeps a logging side for private jobs. TDC has also done work for ORM, Port Blakely and DNR.

"On average we have about three sides going pretty steady and our processors are working a lot for other people that we contract out," Cox said.

One equipment set he hasn't got into are towers as most of the work is ground based but some of TDC's machines might find themselves under one of Weyerhaeuser's towers.

The biggest thing about their ground operation is no boots on the ground which makes companies happy for liability.

With the Waratah processors,

Cox has been happy with all the mechanization as opposed to handbucking since it is safer and helps with production.

"For machinery you have to pay a little up front for machinery like this but it pays for itself," Cox said.

For maintenance, Cox has a shop near Pe Ell, and two full-time mechanics. Best friends Mike Nelson and Chris Engle, who each own their own me-

(Continued on Page 11)
See "TDC"



2005 ZEHR HG4000 GRINDER, early Diamond Z, 2009 CAT C27, Tier II, 1,050 hp, remote, stacking conveyor, 8 NEW tires, good brakes, twin-disc clutch, hammer-mill approx. 62" x 17".....\$129,500



2002 PRECISION HUSKY 66-23 CHIPPER, Husky XL-175 loader, CAT 3412, 700/750 hp, Tier I, joy sticks, twin-disc clutch, feed table w/feed chain, cab, 12 NEW tires, good brakes, fresh oil, new paint, recent injectors, one owner, was working daily, 11,141 hours.....\$99,500



1996 PETERSON 4400B GRINDER, CAT 3412 @ 800 hp, 3 axles, all new tires, twin-disc clutch, dual horizontal rams for feed, heavy rotor, good last clean older unit, approx 87,000 lbs. w/o tractor.....\$79,500



MORBARK 20 CHIPPER, new CAT C13 with 3,684 hours, 385 hp, Tier III, new tires, good brakes, lights.....\$69,500



2008 VERMEER BC2100XL CHIPPER, Cummins diesel, approx. 275 hp, new knives, clutches, PTO, hyd feed rollers, 5,227 hours, good for age and hours.....\$55,000

SHOP-BUILT BRUSH RAKE, removed from CAT 518, approx. 110" wide, (9) 12" shanks, low hour unit.....\$2,000

MPH EQUIPMENT

INCORPORATED

Call Chuck
530-221-6760

8537 Commercial Way, Redding, CA 96002

chuck@mpiequipment.com

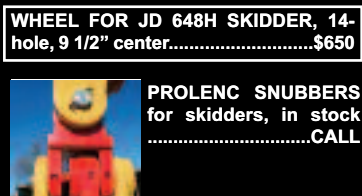
www.mpiequipment.com



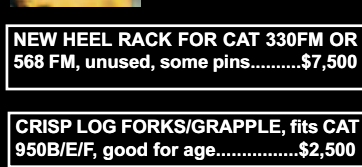
2014 JOHN DEERE 748H SKIDDER, dual-function boom, grapple, winch, direct drive, good 30.5 tires, tight center, runs well, 6,990 hours.....\$139,500



2013 JOHN DEERE 648H SKIDDER, dual-function boom, grapple, winch, direct drive, 2 NEW tires, 2 very good tires, cab, AC, good machine, 7,600 hrs.....\$119,500



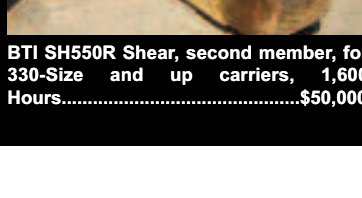
WHEEL FOR JD 648H SKIDDER, 14-hole, 9 1/2" center.....\$650



NEW HEEL RACK FOR CAT 330FM OR 568 FM, unused, some pins.....\$7,500



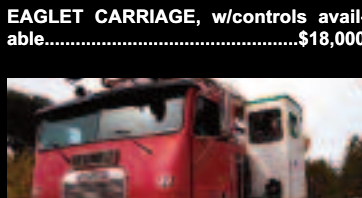
CRISP LOG FORKS/GRAPPLE, fits CAT 950B/E/F, good for age.....\$2,500



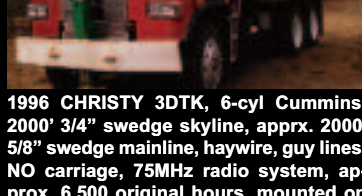
BTI SH550R Shear, second member, for 330-Size and up carriers, 1,600 Hours.....\$50,000



WASHINGTON 188 YARDER, Detroit 8V92T power, 4-axle carrier, standing skyline. This is a good, clean unit that was working as of 06/10/16. Consigned, call for location.....\$250,000



EAGLET CARRIAGE, w/controls available.....\$18,000



1996 CHRISTY 3DTK, 6-cyl Cummins, 2000' 3/4" swedge skyline, approx. 2000' 5/8" swedge mainline, haywire, guy lines, NO carriage, 75MHz radio system, approx. 6,500 original hours, mounted on Freightliner w/Cummins power, heavy 2-speed rear ends, biscuit suspension, good clean unit. Yarded logs until October 15, 2015. Owner is downsizing, consigned, call for location.....\$75,000



2004 TEREX TH842C REACH LIFT, 8,000 lbs, 42", 48" forks, very good foam-filled tires, Deere diesel, hours N/A, nice machine.....\$32,500



2008 CAT 14M VHP, 16' board, push block, rear ripper, good 20.5 tires, AC, Ac-cugrade-ready, clean unit, Tier III, runs & shifts well, 8,155 hours.....\$155,000



2012 CAT 12M VHP PLUS, rear ripper, push block, 14' board, 14:00x24 tires, former county machine, sold new August 2012, 4,795 hours.....\$147,500



2008 CAT 140M AWD VHP PLUS, 14' board, rear ripper, 14:00R24 radials, 6x6, cab, AC, orig paint, 6,252 hrs.....\$129,500



2010 JOHN DEERE 770G, 14' board, push block, rear ripper, aux hydraulics, 17.5 radials, cab, air, fair paint, prior county unit, good machine, 7,633 hours.....\$109,500



2010 JOHN DEERE 770GP, 14' board, push block, rear ripper, Pitot controls w/steering wheel, aux. hydraulics for snow equipment, very good 17.5 Bridgestone tires, cab, AC, fair paint, prior county unit., 8,105 hours.....\$105,000



2015 CAT D4K2 XL 6-way dozer, rear ripper, open ROPS, wired, fair undercarriage, 2,087, just off job.....\$89,500



2013 LINK-BELT 300 X3, Esco hydraulic QC, Esco link hydraulic thumb, good undercarriage, Isuzu engine, AC, radio, nice unit!, 2,619 hours.....\$145,000



2013 LINK-BELT 145 X3 Spin Ace, Esco bucket, Isuzu engine, pattern changer, cab, AC, good clean unit.....\$83,500



2012 JOHN DEERE 210G LC, hydraulic QC, hydraulic thumb, 32" tracks, good unit, 4,653 hours.....\$135,000



2013 VOLVO EC35C, new bucket, new Amulet thumb, blade, off-set boom, good clean machine, prior rental, 1,406 hours, located in McKinleyville, CA, call Mark at 707-499-6263.....\$27,500



2013 FREIGHTLINER M2 TRUCK TRACTOR, 330,723 miles, Cummins 1SL9-380, 380HP, engine brake, 10sp, air ride, new 2018 Randco 3,750 gal tank, 5 sprays, hose reel, hyd fill, nice tank.....\$65,000



2010 T800 Kenworth Cummins 365HP, CARB compliant, 10sp, air ride, alloy wheels, 2018 Randco tank, 2200 gal, 5 sprays, hose reel, hyd fill, 468,000 miles,\$55,000



OUT ON THE LANDING

ABOVE: Posing for Loggers World is Driver "Bubba" Ian Bacon, Mechanic Jeff Miller and "Grizz" Dave Seaunier, driver of TDC's number 17 Kenworth log truck. RIGHT: Operator Tanner Lusk steps out of the cab of the John Deere 2054 with Waratah 622 processor to say Hi to the Loggers World photographer.



HEAVY DUTY TRANSAXLE

16891 146th St. SE Suite 103 Monroe, WA 98272
Hours: 8:30am to 4:30pm

360-794-2021 TOLL FREE: 888-383-3301

HDTRANSAXLE@USA.NET WWW.HDTRANSAXLE.COM

Exchange Units in Stock
Differentials in Stock
AxleTech, Clark, Eaton,
Fuller, Meritor, Spicer

Full line of Planetary Service Parts
AxleTech, Clark, Rockwell, Shuler
Fits: Washington/ Skagit/
Thunderbird/Madill Yarder Axles
& More



Local Full Service Gear Shop
Custom Gearwork - Time & Materials



Late Style 20 inch Clark HUB Fits:
BD 50/70 BD 56/60 BD 45/60



New & Rebuilt Clark Planetary
Assemblies in Stock

UNITS IN STOCK! - NEW & REBUILT

2014S REAR REAR	DS461	RTLO20918B	RTLO18918B
2014S REAR LOCKERS	DD461	RTLO18718B	RTLO16713A
2014S FRONT LOCKERS	DC461	RTO146131B	RTO14613
23160 FRONT LOCKERS	RS461	RTLO16915	RTLO15715
23160 REAR LOCKERS	RD461	RTLO14715	RTLO14709
RATIOS: 4.0, 4.30, 4.56, 4.89	RC461	RTLO16908MLL	

SPICER/DANA

1241C / D - REBUILD EXCHANGE
AMO 1004-C / D
AT1202 AIRSHIFT / MECHANICAL

Call us for current stock!

888-383-3301

OREGON CHAINSAW SHOP

www.oregonchainsawshop.com

Who Is Oregon Chainsaw Shop?

Oregon Chainsaw Shop is the online store for L & L Equipment, Inc. dedicated to bringing you the toughest and most durable chainsaw products on the market.

CHECK WITH US WHEN YOU NEED:

- ✓ STIHL
- ✓ HUSQVARNA
- ✓ OREGON
- ✓ SUGIHARA
- ✓ HARVESTER BARS & CHAIN



503-623-5116

Or stop by our full service shop at
1145 SW Oakdale Ave.
Dallas, Or 97338

L&L EQUIPMENT

(Continued from Page 9)

chanic business also help out when needed.

Cox's workday is a long one. It might start out at 3 a.m. and he can find himself in a shovel or feller buncher - just whatever is necessary.

Employees are important to Cox, and so much so that he even became ordained to do the wedding of one employee, Jake.

"I finished it saying by the

power vested in me by the internet," Cox said. "I just had to do a background check and some paperwork."

The company has always had the principle of treating people like you want to be treated. Cox feels a thank you and a good job also goes a long way.

There have been a lot of changes through the years for Cox - the move to tree length and machinery improvements. While manpower is becoming a bit tougher to come by these years and Cox beginning in the wee

hours doing a variety of jobs including operating machinery, dispatching trucks and keeping work out in front of his employees - it's definitely worth it.

"I have buddies who talk to me about being stuck in traffic on I-5 and traffic for me on the day is a herd of elk or a fawn," Cox said.

TDC has been focused on a clean job site, a strong work ethic and being honest with people. Cox has been appreciative of his employees who value these things and the work keeps them

very busy.

When not working, Cox focuses on his family as his wife Heather runs the office for the company and their three kids play plenty of sports. Cox also tries to entertain people at his shop, which has several TVs and the family stays involved in the Pe Ell community.

TDC does business with Pape Machinery for the John Deere equipment, along with tires from Les Schwab, and parts and work from NW Truck Industrial.

"I've had real good luck with the John Deeres," Cox said.

Cox should know as he has a few on the equipment roster. TDC stays busy with work in western Washington, and while he may have left the "family business" by leaving Weyerhaeuser, he's continued the family tradition by being a mainstay in the woods.

CALL US FOR ALL YOUR DOOSAN NEEDS

Ask about our
Finance and Lease
Specials!

DOOSAN

Authorized Dealer

- Parts
- Service
- Sales
- Rental
- Lease



Serving the Northwest Since 1901

(503) 282-2566

Fax: (503) 282-1755

4800 N.E. Columbia Blvd., Portland, Oregon 97218

feenaughty.com

(541) 636-3660

541-357-4542

9404 Highway 99 N., Eugene, Oregon 97401

KENWORTH T800 4-AXLE CHASSIS



10 Trucks
To Choose From
YOUR CHOICE
\$55,000

Cummins ISX Engines,
18-speed trans. (RTLO18918B),
Single speed Eaton rear-ends
4:10 or 4:11 gears w/locker
**Hendrickson Haul-max
walking beam susp.**

- #7 R087298 2005, D46-170HP
rears, 270" WB, 475hp..\$55,000
- #14 R118637 2006, D46-170HP
rears, 254" WB, 475hp..\$55,000
- #38 R892655 2002, DSP-463P
rears, 252"WB, 475hp...\$55,000
- #46 R087303 2005, D46-170HP
rears, 252" WB, 475hp..\$55,000
- #68 R179279 2007, D46-170HP
rears, 252" WB, 475hp..\$55,000
- #87 F064742 2004, DSP-463P
rears, 252"WB, 475hp...\$55,000
- #93 R087300 2005, D46-170HP
rears, 252" WB, 475hp..\$55,000
- #109 R179280 2007, D46-170HP
rears, 254" WB, 475hp..\$55,000
- #114 R892657 2002, DSP-463P
rears, 252"WB, 475hp...\$55,000
- #125 R393399 2003, DSP-463P
rears, 266"WB, 475hp...\$55,000

CLEAN AND IN EXCELLENT SHAPE!
Maintenance Records - Regular Oil Samples
For More Info: www.irelandtrucking.com

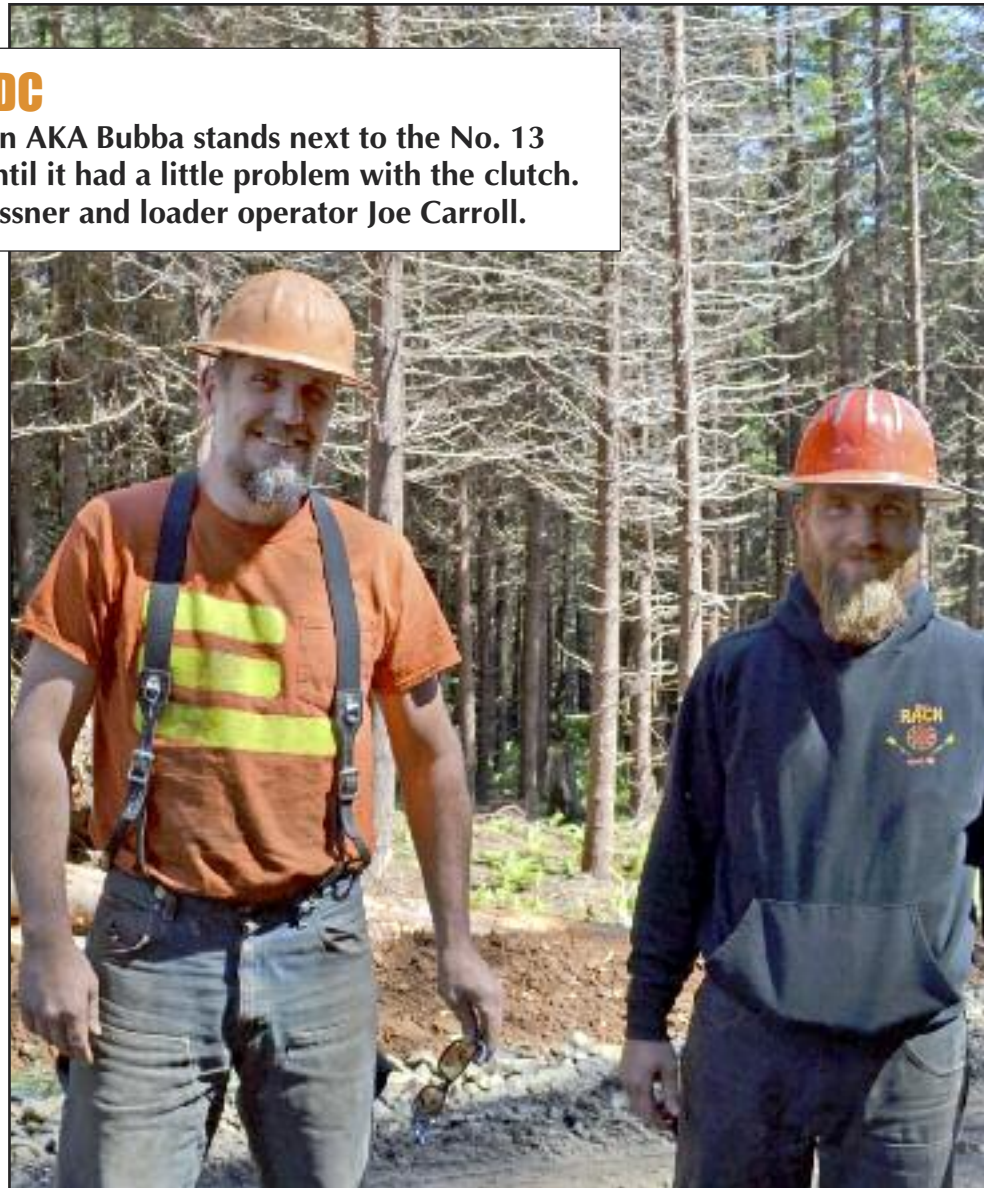
Thomas H.
IRELAND
INCORPORATED

Call Charles Ireland
541-863-1501
Myrtle Creek, OR



WORKING FOR TDC

LEFT: Driver Ian Bacon AKA Bubba stands next to the No. 13 Kenworth he drove until it had a little problem with the clutch.
RIGHT: Driver Joel Kissner and loader operator Joe Carroll.



Introducing

NAS 
NORTH AMERICA SUPPLY

www.NorthAmericaSupply.com



Your new link to www.tirechainsrequired.com and www.harvesterbars.com. These two sites are coming together to offer you all the same high quality brands you've come to know and trust in one convenient online location. Tire chains, saw bars, saw chain and hot saw teeth delivered straight to your door.

Visit or call toll free to speak with a rep at
1-855-255-0871

sales@northamericasupply.com
Logging and industrial supplies,
wire rope, chain and
accessories coming soon!

American Chains



CARLTON

Ballantine

Appelo Archives Center

Logging Museum, Library and Bookstore



Our best selling book:

"When Logging Was Logging" is available for purchase in store, online, and over the phone!

1056 SR 4 Naselle, WA 98638
360.484.7103

info@appeloarchives.org
www.appeloarchives.org

The Appelo Archives Center specializes in preserving and presenting the history of the Naselle-Grays River Valley area of SW Washington. The Archives offers a museum, local genealogy, library, archival material, and bookstore.

Open Tues.-Fri 10am to 4pm and Sat. 10am-2pm

Photo:

Deep River Logging Co.'s
Shay No. 5 at the Deep
River log dump, 1912.



LOADING UP

Troy Cox puts on the first logs of the load for Grizz in the Kenworth number 17.



TRIAD
MACHINERY

Portland	Eugene	Prineville	Seattle	Spokane	Mt. Vernon
800.221.8512	800.342.6780	888.662.2940	800.622.8876	800.945.9168	360.488.3948

MOVE WOOD

LOG-CHAMP
YARDER

T-MAR **INDUSTRIES LTD.** **MAKING OUR CUSTOMERS MORE COMPETITIVE**

FOR MORE
LOGGERS
WORLD
CONTENT,
GO TO

**LOGGERS
WORLD
.COM**

**END GREASING
FRUSTRATION**

ORDER ONLINE
OR CALL

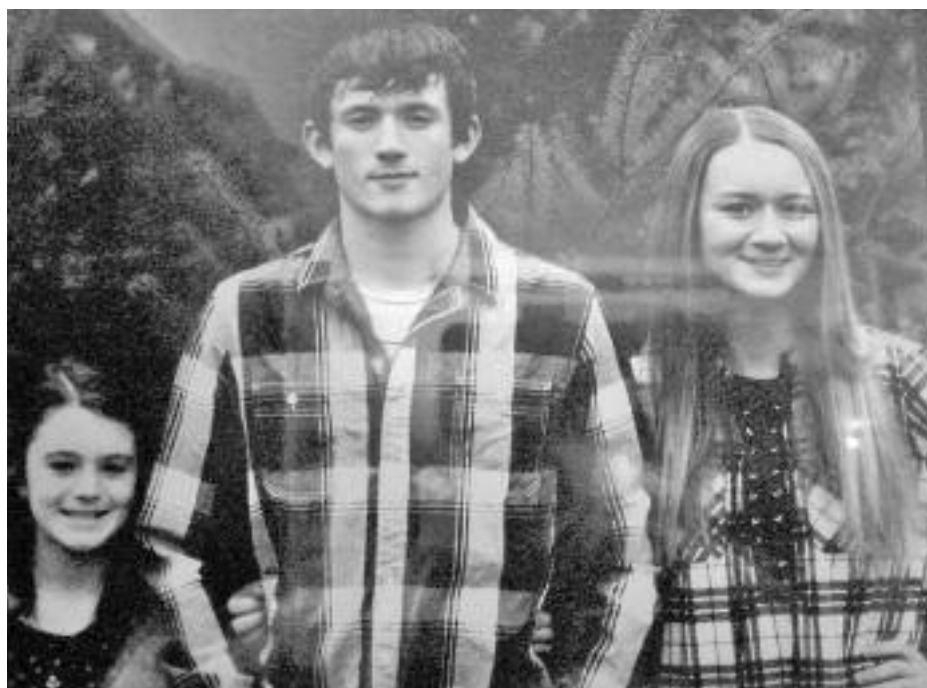


**GREASE GOES IN,
NOT ON, THE MACHINE**

LOCKNLUBE.COM | 603.795.2298

THE FAMILY

Troy Cox with this wife Heather and Carson, Bailey and Abby. Heather heads up the business office, and the Cox's are very involved in the Pe Ell community.



New! EAGLE RAPTOR



We Also Have
Eaglets,
Super
Eaglets,
Eagle IV,
Eagle V,
Eagle VI
& Claws
Available

EAGLE CARRIAGE & MACHINE

ECM CONTROL ON
ALL NEW MODELS!

(541) 963-4646

Fax: (541) 963-3415

After Hours - Sam Baker
(541) 805-9504 cell

62500 Commerce Rd, La Grande, OR 97850
www.eaglecarriage.com



Full Service Shop

Full Service Rigging, Saw Repair & Work Clothing

www.LoggingSupply.com

Toll Free 1-800-488-3127

JUST A GUY FROM PE ELL

RIGHT: The boss and owner, Troy Cox, out on the job site. Troy is a resident of the Pe Ell community and grew up around the timber industry. **LEFT:** Grizz (Dave Seaunier) gets the wrappers secured.



**ONE MACHINE.
DUAL PURPOSE.**

**IT'S A GRAPPLE.
IT'S A PROCESSOR.**



HOW CAN THE PIERCE GP WORK FOR YOU?

The Pierce Grapple Processor is the only machine you need on your work site. Because only the Pierce GP grapples, shovels and sorts like a loader—and delimbs, measures and cuts like a processor. Valuable time, labor, maintenance, fuel, and transportation costs are saved by combining your processor and loader into one single machine, reducing the equipment needed to perform a job historically required by two.

That's the GP difference. For more information on the GP, and other Pierce products, find us at www.piercepacific.com or call us at 800.760.3270.



WWW.PIERCEPACIFIC.COM TOLL FREE: 800.760.3270
PORTLAND, OREGON

MAXIMIZE YOUR RUNTIME

Advanced Technology
Extensive Field Testing
Cutting-Edge Materials
Unmatched Durability



GEM



Chain Bar

Harvester Bars - Harvester Sprockets - Chain
Measuring Wheels - Bar Repair - Replacement Tips

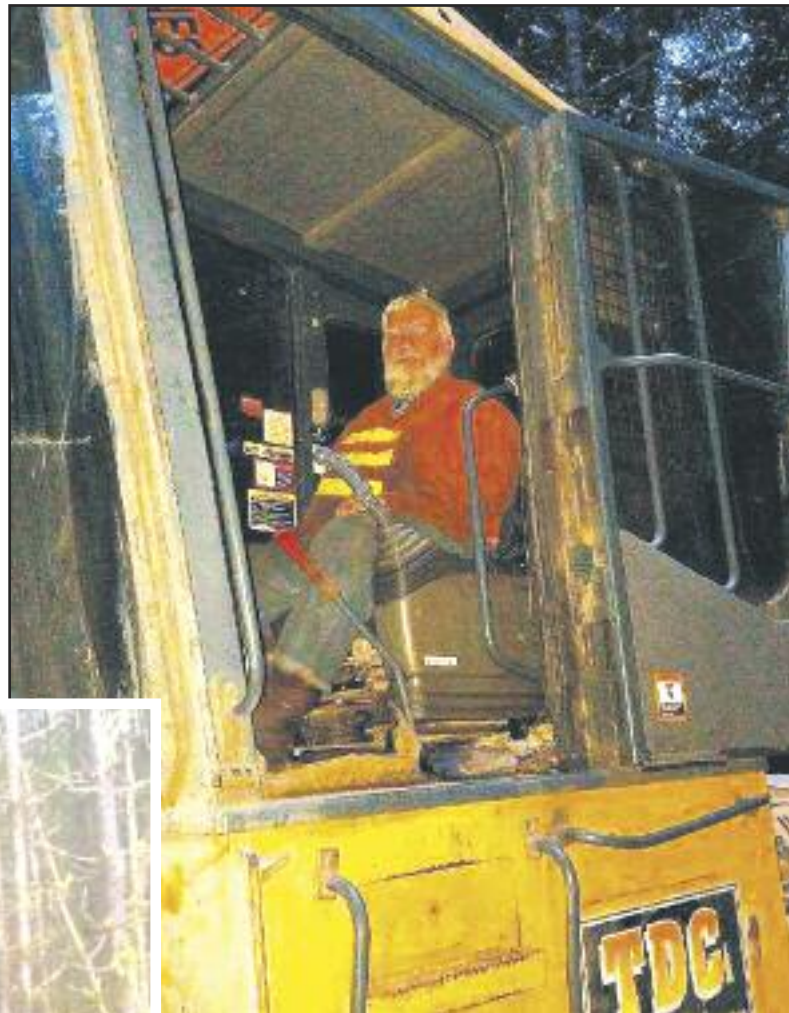
WWW.GEMCHAINBAR.COM
800-455-8471

© Loggers World Oct. 2016, Brandon Hansen, Photographer



OUT IN THE WOODS

LEFT: Gardy Hodle operates the shovel for TDC. RIGHT: Gary Hodle takes a short break to get his picture taken.



WORKING FOR TDC

TWO PHOTOS LEFT: Chad Boone runs the Tigercat LX830 out in the woods. TDC got their first fellerbuncher to be more independent and keep their production on schedule.

www.acmecarriages.com



ACME
Manufacturing Inc.

90099 Prairie Road
Eugene, OR 97402

Phone 541-741-2200

After Hours: 541-554-9414



FORTRONICSTM LTD
FORESTRY ELECTRONIC CHOKER SYSTEMS



WRAPPING IT UP

Driver Joel Kissner is using some friendly persuasion to tighten the wrappers.



**ZENDER EQUIPMENT
COMPANY**

Contact: Kevin Zender (360) 319-7973

Rod Hansen (360) 520-6849

Bob Howell (541) 913-9559

Email: kevin@zenderequipment.com

rod@zenderequipment.com • bob@zenderequipment.com

www.zenderequipment.com • Everson, WA

LOG LOADERS

2012 Cat 568LL, w/Cat grapple 5600 hrs, 1600 hrs on motor.....	\$260,000
2010, Cat 568LL, w/Cat grapple, 12,500 hrs good cond.....	\$190,000
2017 Cat 324DFM, w/Cat grapple, 1,400 hrs, avl. w/Pullmaster HL-25-3 winch, like new cond.....	POR
1993 Cat 330A, w/two HL-25 Pullmaster winches & grapple.....	\$135,000
2000 Cat 325B, w/Jewell 58" grapple.....	\$45,000
2007 Link-Belt 290X2, c/w 3 Pullmaster winches & tong tosser.....	POR
2006 Madill 800, 7,200 hr very good cond.....	\$125,000
2014 Link-Belt 290x2, w/Pierce 60" grapple, 8,200 hrs.....	\$187,500
2015 Link-Belt 290x2, w/grapple, 6,500 hrs, xlent cond.....	\$260,000
2014 Link-Belt 290x2, w/Jewell 63" grapple, 9,500 hrs, new u/c, very nice loader.....	\$210,000
2005 Hitachi 350LL, w/Jewell grapple, recent motor & hyd pump, good u/c.....	\$90,000
2003 JD 270, w/Pierce grapple, recent repairs.....	\$45,000
2005 Kobelco SK 330, w/Jewell grapple, new hyd pump, good u/c, 20,000 hrs.....	\$65,000

DELIMBERS

2010 JD 2954D, w/2010 624C, recent motor, boomed, lined bored & bushed, new rolls, idlers.....	\$180,000
2014 JD 3754D, w/624 Super, rear entry cab, 9,000 hrs on carrier.....	\$280,000
2007 JD 2554, w/Waratah 624 super, 12,500 hrs, recent motor, pumps, good u/c, head is in good cond.....	\$129,500
2006 JD 2054, w/06 Waratah 622B, new fuel pump, injectors, good u/c, recent rblt motor, pump, 3/4 butt saw.....	\$80,000
2011 Cat 330DFM, w/2014 GP head, 15,500 hrs on loader, 8,000 hrs on head.....	\$180,000
2004 Cat 322CFM w/ 04 622B Waratah good cond.....	\$70,000
2007 Hitachi 350LL, w/Waratah 624 Super, 15,500 hrs, good UC, new swing bearing, good cond.....	\$110,000
2013 Link-Belt 290X2 LL, w/2013 Waratah 623C, 10,000 hrs, very good cond.....	\$260,000
2011 Link-Belt 290X2, w/2011 Waratah 623C, 11,000 hrs, road build front.....	\$185,000
2006 Cat 320C, w/06 Waratah 622B, good u/c, 18,500 hrs, nice processor.....	\$70,000
1996 Timbco 445, w/Waratah HTH 620, buncher boom.....	\$25,000
1996 Valmet 500T, w/Valmet head and squirt boom.....	\$25,000
1998 Timber Jack 1270B, w/TJ 762 head, good rubber, w/track chains and lots of spare parts for head.....	\$35,000
2004 Timberpro TB620 E, w/Logmax 7000, 12,000 hrs, good rubber.....	\$140,000
2013 Cat 324DFM, w/DM 4550, xlent cond, 9,700 hrs, very nice limber.....	POR
2004 JD 2554, w/DM 4400, good running delimber, 18,800 hrs.....	\$65,000
2001 Cat 320B, w/DT 4400, recent repairs & spare parts, 14,000 hrs.....	\$60,000

ROAD BUILDERS

2006 Gradall XL4100, w/buckets, 41,000 miles.....	\$57,500
2007 Case CX 330, w/new pin grabber, bucket & thumb, new paint, 7000 hrs.....	\$75,000
2000 Kobelco SK290, c/w thumb and 2 buckets, 10,000 hrs.....	\$75,000

BUNCHERS

2013 Tigercat LX830C, Tigercat 5702 350 rotation saw, 7,300 hrs.....	POR
--	-----

2012 Tigercat L870C, Tigercat 5702 350 rotation saw, 11,000 hrs, good cond.....	\$180,000
2007 Madill T2250C, w/Madill 350 rotation, 4000 hrs on Cummins, 2,500 hrs on pump, UC, bushings, xlent cond.....	\$150,000
1997 Madill 3200B, w/29" RotoSaw, recent complete rebuild.....	\$75,000
2013 Cat 522B, w/Cat 23" hot saw, good uc, tight machine, recent motor & new pump, 9,200 hrs.....	\$250,000
2006 Prentice 1190T, w/Quadco 22" 360 rotation, Cummins power, new u/c, 6000.....	\$130,000
2016 JD 859M, w/JD 22" saw, 5,100 hrs, very nice cond.....	\$320,000
2011 Valmet 450 FXL, w/Quadco 22" 360 rotation head, new u/c, good pins & bushings & new pumps, 11,000 hrs.....	\$210,000
2001 Timbco 445D, w/Quadco 22" saw, rblt Cummins, pumps, drive motors and recent u/c, 12,500 hrs.....	\$77,500
1994 Timbco 425, w/24" bar saw, 5,000 hrs on motor & pumps, good uc.....	\$37,500
Cat 2440 Hot Saw, 24" saw 40 degree tilt, new bearing.....	\$12,500

SKIDDERS & DOZERS & GRADERS

2010 JD 748H, bunching grapple, dual fctn boom, rears 90%, front 30%, 1 set chains, 6000 hrs.....	\$95,000
2006 JD 648G III, dual fctn boom, w/winch, very good rubber, w/new eco tracks, recent motor.....	\$80,000
2001 Cat 535B, w/dual fctn boom.....	\$32,500
2000 Cat 527, w/Esco swing boom, 7 roller, AC, nice machine.....	\$149,500
1995 Cat D5H TSK II, swing boom, new u/c, 8 roller, rblt swing rack, hard bar pivot shaft, rebushed pins, boom, blade.....	\$100,000
1990 Case 1450B, good u/c, winch w/arch, 7000 hrs, nice dozer.....	\$35,000

YARDERS & SWING YARDERS

Washington 78SL, 3 guyline, rblt Detroit 6V71T power, good u/c, nice cond, run all logging systems.....	\$107,000
1982 Washington 118, Major rebuild last year, new 8V92, air & hyd systems, New wheeler single lever controls.....	\$275,000
Diamond D210, rblt Cummins, low hrs on trans, new bearings in drum set, boom & gantry, good lines.....	\$290,000
1993 Cat 330A, w/two HL-25 Pullmaster winches & grapple.....	\$135,000
2007 Link-Belt 290X2, c/w 3 Pullmaster winches & tong tosser.....	POR
Skagit 737, trl mount, Cummins 855, rblt heavy duty 7 guyline tube, Boman 7900 avl., Xlent cond.....	\$200,000
Madill 071, Detroit 8V92T, water on all drums, 4 guyline, good lines, nice yarder.....	\$110,000
T-Bird TTY 70, Detroit 60 Series, Allison CTL60614 trans, 4 jacks, 24' frame, line load meter, good lines xlent.....	POR
T-Bird TTY 70, Cummins power, recent rblt, good lines.....	\$475,000
T-Bird TSY 255, Cat power, xlent cond.....	\$520,000
T-Bird TSY 255, Detroit 8V92T, c/w msp, good u/c, very good cond.....	POR
T-Bird TSY 6140, Cat power, 50' boom, very good cond.....	POR
T-Bird TSY 50, Detroit 8V71T power, good cond.....	POR
T-Bird TMY 50, Detroit 8V92T, good lines, nice yarder.....	\$320,000

CARRIAGES

2011 Boman 7500, 2,600 hrs.....	\$50,000
Boman 9500, Just rebuilt.....	\$40,000



PROCESSING POWER

Tanner Lusk puts the John Deere 2054 with Waratah 622 processing head through its paces.



LOTS OF STEMS

Troy Cox starts loading the pup trailer for Weyerhaeuser Truck #207 driven by Lance Bowling.

JUST A LITTLE HELP

Joel Kissner, driver of the number 11 Kenworth gets a little help up the hill from Troy Cox in the John Deere 2054 loader. It had rained a lot the day before.



Worker's Compensation for Loggers!

and your liability needs, too.

Many of you know us as the agency to see for Disability Income, Medical and Life Insurance... but we are a full-service agency with packages dedicated to the logging industry and related businesses. We have excellent markets for:

- Worker's Compensation
- Commercial General Liability
- Logger's Broad Form
- Commercial Auto
- Cargo
- Commercial Property
- Inland Marine (Your Iron)
- Bonds



Photo courtesy of Jodie Compton

Call today for more information!
866-514-3356 Toll-Free!

360-274-6991 • 25 A Street SW, Castle Rock, Washington 98611

Wayne Lunday, LUTCF, CLU, ChFC

Aaron Lunday

Gail Mowrey, ACSR, CMSR, CRIS

Commercial Insurance Manager



**CAT
928G
930G
924G
938F
Parting
Out**



CAT D6C Parting Out



**Clean 359 Peterbilt, short
hood, Cummins, 13 spd. \$13,800**



**Rebuilt
CAT
3046**



**CAT D342
High HP.
rebuilt
Call**



**CAT
320B
Road
Builder
with
grapple
\$38,800**



**Denharco DM 3500
Thunderbird 736D
Parting Out**



**DUKES
PARTS & EQUIPMENT
509-952-9223**

2015 S. 18th ST, Union Gap Wa. 98903 Shop: 509-469-9420

Check us out online: www.dukesheavyequipment.com



ALL IN A DAY'S WORK

LEFT: TDC's number 11 Kenworth T800 (driven by Joel Kissner) gets loaded up by the boss, Troy Cox in the John Deere loader. ABOVE: Jacob Evans poses in front of his John Deere processor with a Waratah head.



ROTHENBUHLER ENGINEERING

HOME OF THE *Talkie Tooter*

MARK III WHISTLE CONTROL

now in the 72 MHz band, get away from congested frequencies with a proven design



CARRIAGE CONTROLS
rugged radios that can control most manufacturer's carriage from the ground or the yarder

**Rugged, Durable,
Industrial Radio
Equipment since 1946!**

P.O. Box 708, 524 Rhodes Rd
Sedro-Woolley, WA 98284-0708
Telephone 360-856-0836
www.talkietooter.com

USED PARTS FOR

CONSTRUCTION & LOGGING MACHINERY

**Crawlers, Loaders, Trenchers, Excavators,
Backhoes, Skidders, Skid-Steers,
Engines and Transmissions**

"Rely on our Experience - Est. 1967"



1-800-626-6046

**Schaefer
Enterprises**

4535 St. Rt. 3 N. • P. O. Box 136, Wolf Lake, IL
www.sewlparts.com - parts@sewlparts.com

Most Major Credit Cards Accepted



TIMBER SUPPLY CO



Timber Supply Company Inc. is a locally owned business.

- ✓ In business for 53 years.
- ✓ Two coiling machine trucks to serve you.
- ✓ The most complete supply house in the state.
- ✓ Free delivery for most running lines.

SEE US FOR A FULL LINE OF:

- Full line of wire rope: Domestic Import
- Splicing, Socketing, Swagging
- Ulven forging, shackles, and hooks
- Skookum – Ropemaster blocks and parts
- Culvert: ADS plastic Steel
- Hydraulic hoses and fittings
- The Full Logger's Wardrobe
- Road and Landscape Fabric
- Signs
- Fire Equipment
- Climbing Gear
- Tools and Accessories
- Nylon Straps
- First Aid and Safety Supplies
- Chain - All Sizes
- Explosives and Supplies

Oregon Toll Free Number: 1-800-624-5358
Office: 1-541-929-3151 • Fax: 1-541-929-3157
2354 Main Street Philomath OR 97370

GETTING DOWN TO BUSINESS

RIGHT: Grizz hooks up the couplings for the trailer so he can get another load. LEFT: Heather Cox holds down the office for TDC Excavation and Logging.

FELLERBUNCHER AND WARATAH PROCESSOR OPERATOR & MECHANIC POSITIONS AVAILABLE, *only the experienced need apply*



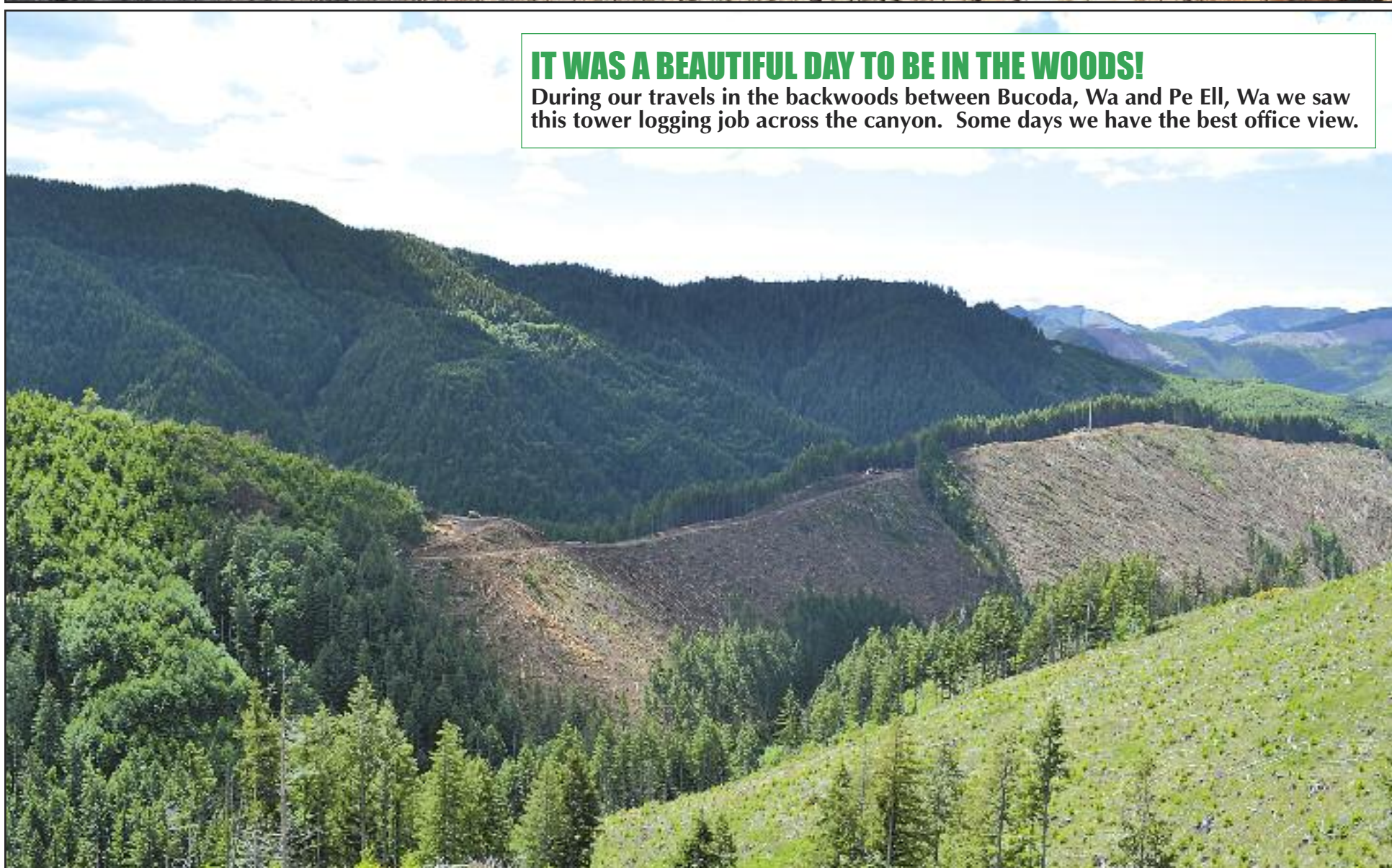
This is a remote job in Alaska with a 25 man crew. Camp facilities include Internet, telephone, dish TV, laundry. It's a clean dry camp with a professional chef. A handsome bonus is built in our production to be paid at the end of each season for those who stay all season. Mid May to mid October Wages DOE.

Contact Mark Fairchild @ Mfairchildtkg@aol.com
907-715-9879
Or Kelly Fairchild @ kelly@fairchildtransport.com
907-687-8866



WHEN YOU RUN OUT OF ROOM

Troy Cox in the JD 2454D Log Loader parks the pup trailer off road to free up a little more room for loading. When things are tight, you can be creative.



IT WAS A BEAUTIFUL DAY TO BE IN THE WOODS!

During our travels in the backwoods between Bucoda, Wa and Pe Ell, Wa we saw this tower logging job across the canyon. Some days we have the best office view.



Summary Judgment....

Western David Fights Environmental Goliath in Rural Utah

by William Perry Pendley

It is a cliché that the main stream media get much wrong, infuse news with opinions, and—what they do not get wrong or slant—they miss entirely. Nonetheless, it is nothing short of amazing they failed to report the most outsized match since Goliath, the Philistine champion, sneered contemptuously at ruddy-faced David, the shepherd boy. After all, when three poor rural counties in a remote corner of a western state sue a who's who of the world's most powerful organizations and a billion-dollar corporation, that is news!

That was not the media's reaction when those groups, the corporation, and a few American Indian tribes filed federal lawsuits against President Donald J. Trump. When those lawsuits were filed reporters—who love every lawsuit, regardless of legal merit, filed against Trump—heaped on the praise. Another reason they did so was the suits challenged President Trump's reductions of two national monuments in Utah created

(illegally say most experts) by President Clinton in 1996 and President Obama in 2016 at the behest of environmental groups, media darlings all. Finally, the bi-coastal media elite's distain for—when they think of us at all—fly-over-country, the Mountain West, and rural Utah is positively breathtaking.

There is no excusing, however, the failure of the media to reveal the real target of the lawsuits, that is, some of the hardest working, poorest, and longest suffering descendants of some of the West's oldest families: the men, women, and children of Garfield, Kane, and San Juan Counties. After all, the lawsuits demand they stop ranching and farming, logging and mining, searching for sources of energy, and recreating on the vast, wide-open federal lands they and their ancestors have used, in full compliance with federal law, for many generations.

What is it they are to do instead? Pump gas, pull espressos, and fluff duvets or otherwise serve the tourists

who, although promised after the Clinton shut down of 1.9 million acres in 1996, never came. Even if they had, as western third-generation logger Bruce Vincent said when a similar disaster befell his tiny town, "You have to sell a lot of t-shirts to replace a job in the mill." Just who are these Goliaths that so denigrate rural Utahns?

The Natural Resources Defense Council, as of 2015, had revenue of \$130 million and assets of three times that amount. The Sierra Club the same year raised nearly \$110 million with assets of \$82 million. That year, the National Trust for Historic Preservation raised nearly \$52 million and boasted assets of nearly \$296 million. Who knows how much they are worth today? All totaled, they and the groups allied with them in their lawsuits raised \$390 million for the latest year available and bragged of assets of more than \$855 million. At the head of the parade is the most admirable, self-made, billionaire owner of Patagonia, a self-described "dirtbag" who once spent over 200 nights a year sleeping outdoors. Sadly, he and the groups with which he is allied think all should live his lifestyle.

As outrageous as is the demand by the multi-million-dollar environmental groups and the billionaire ascetic for the future of the families of rural Utah is the legal holding they want federal courts to adopt: No president's actions may be reversed by a future president! It sounds like The Ten Commandments when Pharaoh shouts: "So let it be written. So let it be done." But presidents—no matter how exalted by the media—are not pharaohs; nothing is written in stone—even the Constitution can be amended; and illegal acts must be rectified.

President Trump was right to review abuses of the Antiquities Act of 1906. No one was surprised the review found Clinton and Obama violated the law, single-mindedly pursued "environmental legacies," and kowtowed shamelessly to demands by radical environmental groups. Now however, rural Utah is fighting back on its way to the Supreme Court.

Mr. Pendley, a Wyoming attorney, is President and Chief Legal Officer of Mountain States Legal Foundation and a regular columnist in Loggers World.



Call (800) 422-0074 or join
online at www.loggers.com

Membership Highlights...

- Master Logger Program (exceeds SFI logger training requirements)
- Monthly Springboard Magazine
- First aid/cpr and pilot car training
- Log A Load For Kids® - giving campaign for Children's Hospitals
- WCLA Insurance Agency - top coverage for the timber industry
- Employee benefits programs through WCLA's benefits partner: Kibble & Prentice
- WCLA Claims Management Program - providing the benefit of savings on L & I premium costs, improved safety standards and reduced claims costs

I BUY LOG SKIDDERS



- **Dozers**
- **Loaders**
- **Excavators**

1-503-545-0007

BLAST FROM THE PAST

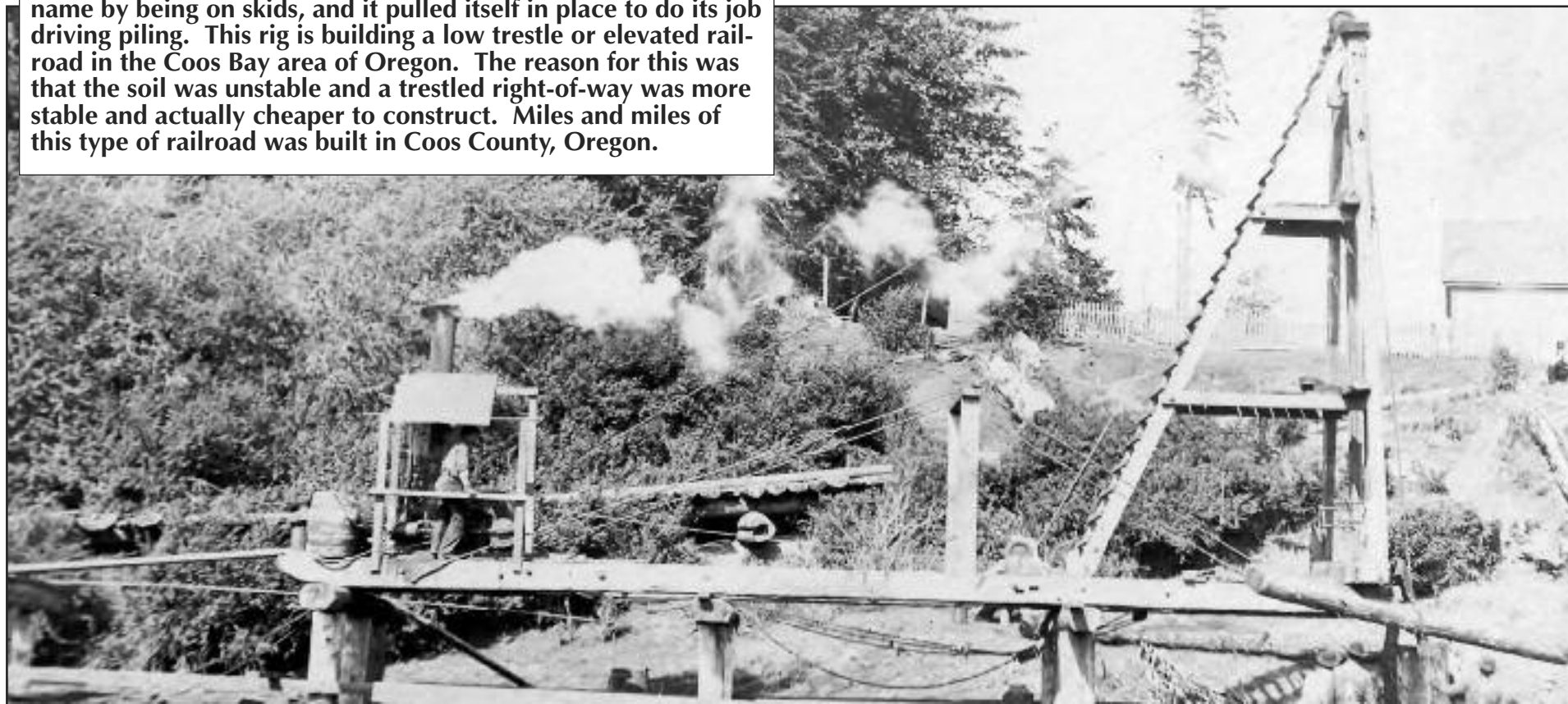
BY QUINN J. MURK FOR LOGGERS WORLD

SKID RIG PILE DRIVER

The skid rig pile driver was the logger's tool of choice to build railroad and later truck road trestles. This machine got its name by being on skids, and it pulled itself in place to do its job driving piling. This rig is building a low trestle or elevated railroad in the Coos Bay area of Oregon. The reason for this was that the soil was unstable and a trestled right-of-way was more stable and actually cheaper to construct. Miles and miles of this type of railroad was built in Coos County, Oregon.

CONTACT QUINN VIA EMAIL : ktmurk@centurylink.net

Or by Mail at: P.O. Box 319, Siletz, OR 97380

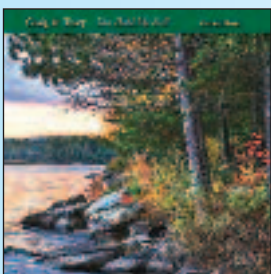


Logging Music is a Great Gift for that Hard-to-Buy-For Person!



Endangered Species **\$15.00**
Plus \$5.50 Shipping

"Endangered Species" - In 1989 Craig & Terry went back into the studio to record their next album. Craig wanted to share his point of view through music which addressed some of the political issues facing the logging industry at that time.



You Hold Me Still **\$15.00**
Plus \$5.50 Shipping

"You Hold Me Still" - In 1992 after many requests to record a gospel album they again returned to the studio and recorded eleven original songs. Two of the songs are co-written - one with Don Beck and one with Rick Barrows.



Songs from the Siuslaw **\$20.00**
A Double Album! Plus \$5.50 Shipping

"Songs from the Siuslaw" (pronounced SY-u-slaw) is a heartfelt tribute to the hard working men & women in the logging industry and dedicated to the many men who have lost their lives doing one of the most dangerous and unappreciated jobs in the world. This a double CD set that was recorded live in Florence, Oregon in 1999 at the Florence Events Center. The first CD is saw-shaped and will play in top-loading and tray-loading CD players ONLY. It comes with a 20-page booklet- filled with humorous lyrics and old logging photos.

Order on their website for fastest service:

www.ctmusicoregon.com

Or if you prefer not to order on-line you can call them at: 541-268-6910



The Snag Fallers Ball **\$15.00**
Plus \$5.50 Shipping

"The Snag Fallers Ball" - A light hearted collection of original songs about logging in Oregon and Alaska, and was first released in 1988. Craig wrote nine of the eleven songs on the album and co-authored two others with Don Beck, a long time friend, logger and musician also from the small town of Mapleton, Oregon.

Special Deal!
ALL 3 CD'S **\$40.00**
Snag Fallers Ball, Endangered Species & You Hold Me Still
Plus \$5.50 Shipping

SUPER Special Deal!
ALL 5 CD'S **\$60.00**
Snag Fallers Ball, Endangered Species & You Hold Me Still
PLUS
Songs from the Siuslaw (double album)
Plus \$6.50 Shipping



**Please send me
the items
I have checked!**

Send your check or Money order to:

CT MUSIC OREGON
86399 SWEET CREEK RD,
MAPLETON, OREGON 97453

NAME:

ADDRESS:

CITY: STATE: ZIP:

PHONE: (.....) (ALLOW 3 WEEKS FOR DELIVERY)

BLAST FROM THE PAST

BY QUINN J. MURK FOR LOGGERS WORLD



THE LOADING DOCK

At one time, railroad ties were big business. During the hay day of railroad construction, the industry was consuming almost half of the nation's output of wood products. This photo is interesting in the fact that there are both sawn and handmade ties in the same pile. Also, during loading when ties were taken off the dock and loaded into gondola railcars, each man on the crew was expected to handle 1,000 to 1,100 ties a day. With a tie weighing up to 200+ pounds, think of the weight they handled. 1,000 ties at an average weight of 175 lbs. means each man picked up and moved 175,000 pounds. It's staggering.

LOGGERS WORLD Suspenders are Back!!



*Show the world that you support
LOGGERS WORLD MAGAZINE
by wearing Loggers World Suspenders*

Loggers World Suspenders are now available in traditional red (2" wide) with black lettering. You can order them with leather ends or clips and we also have the buttons. Just use the handy form below.

**Only
\$18.50**
per pair

(Washington Residents pay
\$20 including Sales Tax)
Plus \$7.50 shipping & handling



Name _____ Phone _____

Mailing Address _____ City _____ State _____ Zip _____

#__46" Leather #__46" Clip #__ @ \$18.50 = \$ _____

#__50" Leather #__50" Clip WA Sales Tax #__ @ \$1.50 = \$ _____

#__54" Leather #__54" Clip S & H @ \$7.50 (\$13.00/ 2 or more pr.) = \$ _____

Bucksaw Buttons - \$3.00 per package of 8 _____ Buttons @ \$3.00 = \$ _____

Total \$ _____

**Send your check
or Money order to:**

LOGGERS WORLD LLC

P. O. Box 1631

CHEHALIS, WA 98532

Credit card sales call:
800-462-8283

**Offer expires
December 31, 2018**

(Continued from Page 7)

and other things. I bought a fry cook job one time in San Francisco and that is what they called it, 'buying a job'.

So this fellow along with the Chamber of Commerce of San Jose were ready for business. They had the office and they had the prospective workers and they went into action. Each person was interviewed and given a number. That person's employment limitations and qualifications were listed on a sheet, below his or her number.

Each person needing a job was given a territory, a batch of these sheets and a notebook and pencil. It was their job to distribute these 'job sheets' and to talk to everyone in their territory and to ask over and over again, "Do you know anyone who has a job for anybody?" If they got an affirmative answer they would write down the important information and get it back to the office and into the 'job hunting hopper'.

Well the upshoot of it was that this task force team dug up almost 1000 jobs in the heart of the depression in the city of San Jose. I

think that San Jose was a town of about 30,000 people at that time.

They set a Goal. The goal was to find 500 jobs in 30 days in San Jose. The deadline for its achievement was 30 days.

They worked on ideas and methods and they wrote down a plan for the achievement of the goal.

They anticipated the obstacles and the road blocks and they decided what they would do when they were confronted with obstacles or road blocks.

They built a positive mental attitude and became enthusiastic and full of energy.

They went into action and they never stopped to think about defeat. They won – they reached their goal

I carry a little plaque in my pocket that is the 'Possibility Thinker's Creed' by Robert Schuller.

It goes: "When faced with a mountain I WILL NOT QUIT. I will keep on striving until I climb over, find a pass through, tunnel underneath ---or simply stay and turn the mountain into a GOLD MINE with GOD'S HELP!"

Good advice that!



IRONMART

TOLL FREE: 1-800-462-8283



DEADLINES: by mail, 5th of month prior to publication.
Phone your order toll free 8:30-5:00 p.m. Monday-Friday Pacific Time.
Use your VISA or MasterCard



LOGGING FINANCE.COM

OUR NAME SAYS IT ALL!

- ☐ Low Rates
- ☐ Fast Approvals
- ☐ Easy Credit Application

Financing Provided By

**AMERICAN LEASING &
FINANCIAL**

800-644-1182

WANTED Silvey Pro Sharp chain grinder. Usable or broken. Will pay cash. Professional logger.
360-989-0456

M

THEY ARE BACK!

LOGGERS WORLD SUSPENDERS

TRADITIONAL RED

with black letters

Clips or leather ends
available in size 46-50-54,

\$18.50

Pair
(U.S. Funds)

Plus \$7.50 Shipping (Inside USA)

WA Residents pay \$20

including sales Tax

LOGGERS WORLD

P. O. Box 1631,
Chehalis, WA 98532

TIMBCO USED PARTS

445 Finals & Motors
Cat 330 & Lohmann GFT80
Stick, Tool & Leveler Cyls
Tested Rad, Poclain Swing
ALL ITEMS INSPECTED
Call Kevin 877-563-8899 or
250-565-5222
khodgins@prolenc.com

X

EQUIPMENT FINANCING

- New & Used - No age restriction
 - No Financial Statements Needed
 - Approvals in 24 hours
 - Logging Industry Specialist
- www.cfscapital.com/forestry**
800-503-4919

P

EXPERIENCED OPERATORS WANTED, ALASKA

*Five years experience
minimum*

Logging Foreman
Feller Buncher Operator
Processor Operator
Loader Operator
Skidder Operator
Road Foreman
Excavator Operator
Flail Chipper Operator
Log/end dump Truck Drivers
Work Schedule is 6/10's
Call 907-712-7270

M

WANTED: Bull or High Lead Logging Block, 18" sheave or larger also want to buy old axes, axe heads, spring boards, crosscut saws and handles **Bob 360-687-1883 or 360-608-2583**

X

ENGINES WANTED WILL PAY CASH & PICKUP

DETROIT engines 60 series,
12.7 liter DDEC III's & IV's.
CUMMINS Big
Cam 444, NT88, N14.
CUMMINS ISX non-runners.
Call or text 501-772-6005

X

Time to Quit - Sell or Trade. Heavy Equipment parts: Allis Chalmers, Terex, Cat, Link-Belt, John Deere, Detroit. Old logging rigging and tools, blocks, shackles, saws, etc. **503-879-5440** or **deck@partsunknownusa.com**

X

40' to 89' (No 70' available) flat car and box car bottoms available for bridges, best prices. 360-426-8386 fehorse@basicisp.net

X

D5H TSK track skidder. Bunching grapple, strong winch, new rails, fire screens, good running dozer ready to go to work, fairly priced @ \$59,500. Call Brad 530-258-7871 or Pat 406-276-3533

M

HELP WANTED:

Looking for an experienced log loader operator.
Job location: Calaveras County, possibly Tuolumne County, California.
Need ASAP.
Wage dependent on experience.

Please call 209-962-4350 or email: sfultontrk@yahoo.co

M

100% FINANCING

New & Used Equipment
Great Rates
Seasonal Payments Available
Start-Ups Welcome

Threshold Financial
www.thresholdfinancial.net

888-280-9900

V

Timber Harvesting Professionals Wanted on Afognak Island, Alaska

Excellent wages paid for qualified processor, shovel, road building operators and truck drivers and yarder crew. Also hiring entry and journey level mechanics for shop and field work.

New management and new attitudes as well as machinery updates and camp improvements.

Expect 6 days/week work schedule.

Must provide resume/references and minimum 5 years experience.

Drug Tested Workplace.
Call **EVERGREEN TIMBER**
907-680-2304
www.evergreentimberlp.com

nc

Log Trucks for Sale
Kenworth & Peterbilt
call 541-290-1182
for info

M

118B Galion Grader
for sale for parts
208-390-2708

M

CROWLEY EQUIPMENT, INC.

(541) 688-5924 FAX: (541) 688-0704

MIKE (541) 954-7643 • ERIC (541) 206-2252 • DAN (541) 914-9222

4655 Cloudburst Way, Eugene, Oregon 97402



2015 John Deere 2454D Log Loader,
W/Pierce GP head, 5,000 Hrs.,
P.O.R.



2011 John Deere 2454D
W/Pierce 3348
7,600 Hrs.
\$205,000



1996 Diamond D210
\$250,000



1995 Thunderbird TSY255

Tilt Cab, Cat Engine, Lohmann Finals Eagle Carriage, Radios.
Trades Welcome!

LOG LOADERS

- 2015 CAT 320D
- 2013 CAT 320D
- (2) 2012 CAT 320D'S
- 2013 HITACHI ZX240
- 2016 JOHN DEERE 2154D
- 2015 JOHN DEERE 2454D
- 2014 JOHN DEERE 3754D
- 2010 JOHN DEERE 2954D
- 2009 JOHN DEERE 2954D
- 2008 DEERE 2554
- 2008 JOHN DEERE 2054
- 2005 JOHN DEERE 3554
- 2004 JOHN DEERE 2054
- 1993 JOHN DEERE 690E
- 2011 KOBELCO SK295
- 2006 KOBELCO SK210
- 2006 KOMATSU PC300 YODER
- 2015 LINKBELT 350X2
- 2014 LINKBELT 290X2
- (2) 2013 LINKBELT 240X2
- 2005 LINKBELT 240LX
- W/JEWELL TONG THROWER
- 1997 LINKBELT 4300Q W/(2) PULLMASTER DRUMS
- 1996 THUNDERBIRD 1240
- 2017 TIGERCAT 880D
- 2016 TIGERCAT LS855D W/GRAPPLE SAW
- 2015 TIGERCAT LS855C

PROCESSORS & DELIMBERS

- 2012 CAT 532 W/WARATAH 623C
- 2005 CAT 322C W/622B
- 2001 CAT 330B LL W/'01 WARATAH 624
- 2015 JOHN DEERE 2454D W/PIERCE GP HEAD
- 2013 JOHN DEERE 2154 W/WARATAH 622C
- 2012 JOHN DEERE 759JH W/622B
- 2011 JOHN DEERE 2454D W/PIERCE 3348
- 2008 JOHN DEERE 2954D W/2010 WARATAH 624C
- 2008 JOHN DEERE 2054 W/622B
- 2007 JOHN DEERE 2554 W/PIERCE 3348
- 2007 JOHN DEERE 759JH W/WARATAH 622B

PROCESSORS & DELIMBERS Cont.

- 2006 JOHN DEERE 2554 W/DM4550
- 2006 JOHN DEERE 2554 RB W/WARATAH 622B
- 2002 JOHN DEERE 230LC W/DM4400
- 1990 JOHN DEERE 290 W/FABTEK
- 2005 KOBELCO SK250LC RB W/WARATAH 622B
- 2016 LINKBELT 4040TL W/WARATAH 623C
- 2012 LINKBELT 290X2 W/DM4550
- 2004 LINKBELT 240LX W/PIERCE 3348
- 2003 LINKBELT 240LX W/DM4400
- 1997 LINKBELT 3400Q WDM3500
- 2003 TIGERCAT L830 W/2011 WARATAH 622B

FELLER BUNCHERS

- 2016 CAT 552
- 2015 JOHN DEERE 959K
- 2015 JOHN DEERE 643L
- 2009 JOHN DEERE 959J
- 2015 TIGERCAT LX830C
- 2009 TIGERCAT LX830C
- 2005 TIGERCAT L870
- 2005 TIGERCAT LX830
- 2010 TIMBCO 445FXL
- 2007 TIMBCO T445EXL
- 2006 TIMBCO T425EXL
- 2003 TIMBCO T445E
- 2002 TIMBCO T425D
- 2011 TIMBERPRO TL735B W/BARSAW
- 2011 VALMET 450FXL

SKIDDERS / DOZERS

- 2017 CAT 545D
- 2010 CAT 525C
- 2003 CAT 527
- 1997 CAT D4H
- 1995 CAT D5H W/GRAPPLE
- 1991 CAT D6H W/GRAPPLE
- 1990 CAT D8N W/RIPPERS
- 1990 CAT D5H GRAPPLE, WINCH
- CAT D7F W/ESCO SWING BOOM
- CAT 977L

SKIDDERS / DOZERS Cont.

- 2010 JOHN DEERE 848H
- 2006 JOHN DEERE 848G
- 2005 JOHN DEERE 748G3
- 2003 JOHN DEERE 648G3 W/SWING BOOM
- 1990 JOHN DEERE 648D
- 1988 J D 550G W/RIPPERS
- JOHN DEERE 850 W/WINCH
- TIMBERJACK 380B
- CHIPPERS / GRINDERS**
- MORBARK 30RXL
- 1995 PETERSON 5000G
- YARDERS**
- CHRISTY HD YARDER
- DIAMOND D210
- KOLLER K702 ON TRACKS
- (2) KOLLER K602'S
- KOHLER K501
- (2) MADILL 071
- MADILL 70'
- (2) SKAGIT 739
- SKAGIT 737
- (2) THUNDERBIRD 6140
- THUNDERBIRD TMY50
- THUNDERBIRD TSY-6240
- THUNDERBIRD TSY255
- THUNDERBIRD TY90
- THUNDERBIRD TY-40
- 1995 THUNDERBIRD TTY70

EXCAVATORS

- 2012 HITACHI 290
- 1996 HITACHI EX270
- 2014 JOHN DEERE 2454D RB
- 2008 KOBELCO SK210 RB
- 2006 LINKBELT 370LX RB

MISCELLANEOUS

- 2012 CAT 924K
- 2007 CAT 140H
- CAT 977L
- EXC. HEEL/GRAPPLE
- 1995 JOHN DEERE 770BH
- 2006 KOMATSU WA450 -L5
- MEDFORD LOG FORKS
- 2012 PIERCE GP HEAD
- 2001 TIMBERPRO TF820E
- 2007 WARATAH 624
- PARTING OUT**
- 2005 HITACHI ZX250 LL
- LINKBELT 210LX BOOM
- THUNDERBIRD TSY-155



2016 John Deere 2154D,
3,300 Hours
\$205,000



2015 Tiger-Cat LX830C
340° 5702
Hotsaw,
3,800 Hrs.
P.O.R.



2015 Link-Belt 350X2
5,000 Hrs.
P.O.R.



2008 Kobelco SK210 Mark 8
With 360
Brush
Grapples,
4,000 Hrs.

Call for More Info.

www.crowleyequipment.com



2005 John Deere 748G3,
7,500 Hrs.
\$80,000



2017 Tigercat 880D
700 Hours
P.O.R.



1990 Cat D5H,
Grapple, Winch
P.O.R.



2009 Tigercat LX830C
Newer Undercarriage, 9,664 Hrs.
P.O.R.



(2) 2012 Cat 320D Log Loaders
P.O.R.

SHOW AND SELL

Send your Black and White or Color photo and a description of what you are selling (try to keep it within 20 words - 1 item per ad - No Business Names Allowed) and we'll publish it in Show & Sell for just \$125.00. Mail (or email to logworld@aol.com) your information to Loggers World LLC, P.O. Box 1631, Chehalis, WA 98532. Deadline is 5th of the month preceeding publication.

**6140 Thunderbird
Swing Yarder,**
all lines & rigging,
whistles, new gear
and bearings 18 mos
ago, Super Eaglet
Carriage ~~\$332,000~~
New Years
Special
\$312,000
(360) 470-1535



X



Portable 2008 CEC 5 X 12 Screen-It, 2-Deck, Low Hrs 557, Remote Control, Deutz 914 Turbo Engine, 4 - CEC Style Run on Hydraulic Legs, Aux Valve Drive & X.D. Pump, Various Sized Screencloth, 2 - CEC 80' Conveyors - 1 Radial, 1 Std, Call Tim at (360)532-1485

M



2004 Peterbilt 378B Air Trac, 1 owner, Cat C15, 535 HP, Lincoln Trailer and Gear and much more. Contact Mike 360-749-3530

M



2015 525D Cat skidder, winch , dual arch, all updates, 3,900hrs \$175,000
Call Shane 530-945-1586

M

ADVERTISE
YOUR ITEM IN THIS SPACE
\$125⁰⁰
CALL 1-800-462-8283
SPECIAL DEAL:
Get your ad for
\$110⁰⁰ if you buy it
on our website:
www.loggersworld.com



2005 Caterpillar 320C/Pierce PTD2856, Forestry cab - Cat walks, 16,000 hrs, Tons of maintenance done, Works every day, great history, priced to sell \$70,000
Call Shane 530-945-1586

M



2004 LogMax 9000 Processor, includes all computer system and color monitor \$30,000
509-884-7117

nc



1998 D5H TSK straddle grapple and winch, low hr machine \$94,000
Call Shane 530-945-1586

M



Waratah HTH 20 with top saw, large feed wheels, 3/4" butt saw, approx 4,000 hrs, lots of new parts, complete with computer controls & computer \$15,000 OBO 541-659-4303 leave a clear message or I can't call you back.

M

ADVERTISE
YOUR ITEM IN THIS SPACE
\$125⁰⁰
CALL 1-800-462-8283
SPECIAL DEAL:
Get your ad for
\$110⁰⁰ if you buy it
on our website:
www.loggersworld.com



1985 Murray 16 tire, 8 1/2 wide spread, drum brakes, \$38,500
Call Shane 530-945-1586

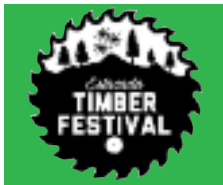
M

ADVERTISE
YOUR ITEM IN THIS SPACE
\$125⁰⁰
CALL 1-800-462-8283
SPECIAL DEAL:
Get your ad for
\$110⁰⁰ if you buy it
on our website:
www.loggersworld.com

COMING EVENTS

JULY

4



ESTACADA TIMBER FESTIVAL

ESTACADA, OREGON
FOR INFORMATION:
<http://estacadatimberfestival.com>

13-15



AMBOY TERRITORIAL DAYS LOGGING SHOW

AMBOY, WASHINGTON
FOR INFORMATION:
info@tdays.org

20-20



DARBY LOGGER DAYS

DARBY, MONTANA
FOR INFORMATION:
<http://darbyloggerdays.com/>

AUGUST

5



VERNONIA FRIENDSHIP JAMBOREE & LOGGING SHOW

VERNONIA, OREGON
FOR INFORMATION:
mplogging@frontier.com

9-12



MORTON LOGGERS JUBILEE

JUBILEE ARENA
MORTON, WASHINGTON
FOR INFORMATION: (360) 523-4049

SEND EVENT NOTICES TO: Publisher, Loggers World Magazine, P. O. Box 1631, Chehalis, WA 98532-8425. Please include your event's symbol. Items used at discretion of the publisher.

Deadline for August 2018 issue: JULY 11th

Advertiser's Index

ACME MANUFACTURING	16	LOGGERS WORLD IRONMART	26
APPELO ARCHIVE CENTER 12		LOGGERS WORLD SUBSCRIPTION	29
CASCADE TRADER	5	MADSEN'S SHOP & SUPPLY, INC.	6
CASHMAN EQUIPMENT	3	MPI EQUIPMENT	9
CATERPILLAR	3	N. C. MACHINERY Co	3
CC HEAVY EQUIPMENT INC.	7	NORTH AMERICA SUPPLY	12
COWLITZ RIVER RIGGING	14	OLIVER HAMMER CLOTHES SHOP	7
CROWLEY EQUIPMENT INC	27	PACIFIC FIBRE PRODUCTS, INC.	7
CT MUSIC	24	PERSONS ENTERPRISES ..	23
DUKE'S EQUIPMENT	19	PETERSON	3
EAGLE CARRIAGE & MACHINE INC.	14	PIERCE PACIFIC MFG., INC. 15	
FEENAUGHTY MACHINERY Co	11	ROTHENBUHLER ENGINEERING	20
FRALEY TRACTOR, INC	8	SCHAEFER ENTERPRISES	20
FULL CIRCLE FINANCE	6	SHOW & SELL	28
GEM	15	TIMBER SUPPLY COMPANY, INC.	21
H.D. TRANSAXLE INC.	18	TRIAD MACHINERY	13
HIGH CASCADES AGENCY	19	WASHINGTON CONTRACT LOGGERS ASSOC.	23
HOLT OF CALIFORNIA	3	WESTERN STATES	3
IRELAND, INC.	11	ZENDER EQUIPMENT	17
L&L EQUIPMENT	10		
LOCK & LUBE	13		

SUBSCRIBE TODAY! LOGGERS WORLD

"The Logger's Magazine," is concerned with what concerns loggers

12 Issues – 1 Year Subscription

\$25⁰⁰

WA Residents pay \$27.40 w/tax
Inside U.S.A.

Send your check or Money order to:

LOGGERS WORLD LLC
P. O. Box 1631
CHEHALIS, WA 98532



Offer expires
December 31, 2018

☐ \$25.00 for 1-Year Subscription ☐ \$50.00 for 2-Year Subscription
☐ \$100.00 for 4-Year Subscription

WASHINGTON RESIDENTS PAY \$27.40, \$54.80 OR \$109.60 w/SALES TAX

NAME:

ADDRESS:

CITY: STATE: ZIP:

PHONE: ()

(ALLOW 5 WEEKS FOR DELIVERY OF FIRST ISSUE)

