

LOGGERS WORLD

VOLUME 53 NUMBER 8

To Advertise Call: (800) 462-8283

AUGUST 2018

Richard Sedy
**TRUCKING &
EXCAVATION**
Castle Rock, WA



LOGGERS WORLD LLC
P. O. Box 1631
CHEHALIS, WA 98532-8425



**VERNONIA FRIENDSHIP
JAMBOREE
& LOGGING SHOW**
VERNONIA, OREGON

August 5



**MORTON LOGGERS
JUBILEE**
JUBILEE ARENA
MORTON, WASHINGTON

August 9-12

PRSRPT STD
U.S. POSTAGE
PAID
PERMIT NO. 260
SPOKANE, WA

LIVE IN CONCERT!

CRAIG & TERRY "The Singing Loggers"

@ Camp 18 Restaurant September 22



Tickets available exclusively through LOGGERS WORLD
Call 800-462-8283

Seating is very limited • Don't wait to buy your tickets
All Tickets must be Pre-Paid • No Tickets will be sold at the door

Loggers World and Craig and Terry Music have teamed up to present a concert at Camp 18 in Elsie, Oregon.

If you are familiar with Craig and Terry's music about logging, you'll want to take advantage of this opportunity to hear them live. Camp 18's big log construction combined with the logging music of Craig and Terry makes this the concert you'll remember for years.

The concert will be September 22, from 7 to 9 pm. Tickets are \$20 per person, pre-paid through Loggers World. ***Because there are only 140 seats available, no tickets will be sold at the door.*** Call Loggers World 800-462-8283 and use your credit card to buy your tickets (other payment arrangements could be made if time permits). Please leave a message if we aren't able to answer your call in person.

Come early and eat at Camp 18's Restaurant (*reservations strongly suggested*) or tour the grounds to see the old logging equipment on display and the "Loggers Memorial".

The closest lodging would be in Seaside, Oregon or Cannon Beach, Oregon. They are both about 25 miles away from Camp 18. Camp 18 is located about 1 ½ hours west of Portland International Airport on Highway 26.

**AVAILABLE FOR
 SALE AT THE CONCERT:
 Craig & Terry Music CD's
 Loggers World Suspenders
 and Subscriptions**

Craig & Terry Music: www.ctmusicoregon.com/
 Sample their music at: <https://soundcloud.com/craig-terry-559686297>
 Camp 18: www.camp18restaurant.com/
 Loggers World: www.loggersworld.com



552 SERIES 2 TRACK HARVESTER

OPERATOR COMFORT

IN THE STEEPEST TERRAIN

BUILT FOR IT.

POWERFUL LOGGING SOLUTIONS



**KNUCKLEBOOM
LOADERS**



SKIDDERS



**FOREST
MACHINES**



**WHEEL FELLER
BUNCHERS**



**TRACK
HARVESTERS**



**TRACK FELLER
BUNCHERS**

The purpose built 552 Series 2 Track Harvester provides solid footing in the steepest terrain. The 552 Series 2 combined with optional steep slope solutions delivers powerful all-around performance, while maximizing operator comfort, stability, ground clearance, and serviceability. Key features include:

- Extended, 11-roller track frames provide ultimate stability and dramatically decrease ground pressure
- 889 mm (35 in) of unobstructed ground clearance provides maximum maneuverability over large obstacles
- Optional engine and hydraulic kits provide ultimate durability and reliability on steep slopes
- Optional dual-anchor point cable-assist mount provides winch assist capability and improved operator comfort in steep terrain

Look to your Cat® dealer for financing and all the machines you need for sustainable harvesting and land management, forestry road construction, hauling and millyard. Total support from one source.

www.cat.com/forestry



www.cashmanequipment.com
Nevada and Eastern Sierra
800-937-2326



www.holtca.com
Central Northern California
800-452-5888



www.ncmachinery.com
Western and Central Washington
800.562.4735 and
Alaska 800.478.7000



www.petersoncat.com
Northern California, Western
Oregon and Southwestern
Washington
800-452-7676



www.westernstatescat.com
Idaho, Western Montana, Eastern
Washington, Eastern Oregon and
Northwest Wyoming
800-852-2287

Finley's Rigging Shack "Classic"



Finley Hays was well known for his ability to tell a good story. His unique perspective was gained by growing up in a logging family, and after starting *Loggers World*, talking to loggers all over the country. Finley went on to his Heavenly Reward in 2008 but we have almost 40 years of his writing and storytelling to enjoy. Finley's Rigging Shack remains one of the most popular features of *Loggers World* and we think that is appropriate for the man that put so much of his life into his vision of a "Loggers Magazine".

Originally Printed in August 1982

HANDLING PEOPLE

I used to have a book and the title was, "HOW TO HANDLE PEOPLE." It was written by some jerk or another who talked about 'handling' people.

Well I don't want to handle people. I want to like them, share with them, care about them, work with them, rejoice with them, celebrate with them, and exchange services with them.

I firmly believe that if you and I have a relationship, we each must contribute to that relationship or it will cease to become profitable or fun. Any relationship that can't continue with an equal, or nearly equal, contribution from everyone concerned is not good.

Zig Ziglar says that the way to get what you want is to give oth-

er people what they want. There is a world of truth in that statement that is not only a good way to get what you want but may be the only way that will last thru this life.

And that brings us down, or up, to what I want to talk about; "WHAT DO YOU WANT?" Before you answer it means sitting down and figuring out many things about yourself and calculating if getting what you think you want is worth it.

There is a price to be paid for getting anything that you desire. (No gain without pain.) If one don't understand this going in he or she isn't going to be happy with it after they got it.

There probably isn't anyone getting married who don't anticipate a happy marriage. Yet half of the marriages made in the past end in divorce (about that). The marriages made now may have a higher divorce rate than

that. One big reason is that the people who get married want to keep all their freedom and not give any to their partner. If you don't want to give what you want to get, or an equal value, you are heading to ruin in that relationship. Only two things can happen to that relationship. One: It will cease to function, or Two: one person will dominate the other. In the case of number two you have two people who are not happy but they don't know why exactly.

A friend of mine took his wife camping every summer on their vacation for 20 years. He was very surprised to find out that she never did like this. Her idea of a vacation was to go to the best restaurant and best motel and then get waited on and to live first class for the duration of their vacation. She had contributed to that relationship while their boy was growing up. When he was grown she quit camping.

I don't know what recounting that experience proves except that people will do something they don't like to do for a long time, but eventually it will or they will quit doing it.

'Handling people' means dominating people. It means using leverage, bribes, force, threats, etc. Like the Army used to tell me, "We might not be able to make you do it but we can make you sorry you didn't do it." That is true and when I had served my time I quit, as quickly as I could. Got out of there and back to the woods again. And a logging job never looked or tasted better than after serving a term in the



FINLEY HAYS

service.

I don't want to handle people. I used to. Thought it was the greatest thing in the world to 'handle' people. To have them work under me. To make them work. To work hard and long myself so they would follow me. To push, to shove,

to B.S., to motivate and to get the job done.

In the old days of logging this may have been the main method. To threaten, cajole, lead, fire some people to get other people to do what you wanted them to do. It worked then and some of these old timers were ahead of their time. I've worked for loggers that would not talk about anything but logging, that were so intent upon their job their only reaction to anything is, 'will it help get more logs?'

Ever see one of these idiot basketball coaches on the sideline when his team was playing that raved and shouted, pulled his hair and one of them even chews on a towel? Well of course half of that is to attract attention, if you have a small boy in your house likely he uses those same tactics from time to time.

At least you can say this idiot coach is interested and dedicated. Well --- I've seen logging superintendents who were like that 10 hours a day every working day all their life. With this attitude and with these tactics they got the job done and it worked so well that most logging superintendents, foremen, hooktenders, bull bucks, etc. adopted these

(Continued on Page 7)
See "Rigging Shack"

IN THIS ISSUE



ON THE COVER: Richard Sedy (left) and grandson Austin Sedy (right) on a private logging job near Clatskanie, Oregon. Richard specializes in "boutique" style logging with lots of extra service to private landowners...

See "Generations out in the woods" starting on Page 6

2. RIGGING SHACK

"Classic" From August 1982 by Finley Hays

8. GENERATIONS OUT IN THE WOODS

RICHARD SEDY TRUCKING & EXCAVATION. by Brandon Hansen

20. AS WE SEE IT

LOGGERS WORKING FOR LOGGERS

21. SUMMARY JUDGEMENT

TAOS, NEW MEXICO REMEMBERS THE BATAAN DEATH MARCH

by William Perry Pendley

24. IRONMART

26. SHOW AND SELL

29. INDEX/COMING EVENTS

LOGGERS WORLD

Published by LOGGERS WORLD LLC

Founded in 1964 by Finley Hays

Phone (360) 262-3376



Member and Supporter of the
American Loggers Council Since 1994



PUBLISHERS.....Kevin & Nancy Core
EDITORS EMERITI.....Finley Hays, Mike Crouse
EDITOR/WRITER.....Brandon Hansen
ADVERTISING.....Kevin Core
OFFICE MANAGER.....Nancy Core

POSTMASTER: Send address changes to:

LOGGERS WORLD LLC,
P. O. Box 1631, Chehalis, WA 98532-8425

E-Mail: logworld@aol.com

SUBSCRIPTION RATE (In U.S.A.):
\$25.00 per year; Two years for \$50.00

LOGGERS WORLD LLC cannot and does not assume responsibility for the contents of any advertising in *Loggers World*. The representations made by advertising is the responsibility of the advertiser and not *Loggers World*. *Loggers World* does not knowingly accept advertising that is false or misleading. The limit of *Loggers World* liability in case of a mistake made in advertising copy by *Loggers World* will be the charge of the actual space containing the error or less for that particular advertisement.

DOOSAN**Authorized Dealer**

Sales, Parts & Service
Your #1 Established Forestry Equipment Dealer

**Cascade Trader has a
Complete Line of new
Doosan Log Loaders, Excavators
& Wheel Loaders for your
Logging & Construction Needs!**

Cascade TRADER Inc.
EQUIPMENT SALES - LOGGING & CONSTRUCTION



**Ask
About Our
Special Financing:
Up to 60 Months**

All offers
subject to credit approval



Thunderbird TMY45, recent work,
includes dolly\$85,000



Doosan DX300LL-5 Log Loader,
NEW IN STOCK



CAT 980G, Medford Log Forks
\$59,500



Doosan DL420-5 Wheel Loader,
NEW IN STOCK

LOG LOADERS

CAT 235C Log Loader, Pierce Boom	\$17,500
CAT 568 Log Loader, 2012	POR
DOOSAN DX225LL Log Loader	\$119,500
DOOSAN DX300LL, well maint	\$115,000
DOOSAN S300LL Log Loader	\$85,000
HYUNDAI R290LC Log Loader	\$115,000
HYUNDAI 320LC-9 LL, excellent	\$145,000
HYUNDAI 320LC-9 LL, low hours	\$225,000
JD 892D Log Loader	\$34,500
JD 200LC LL, Forestry Cab	\$49,500
JD 3554 Log Loader, rear entry	POR
KOBELCO SK200LC Log Loader	\$34,500
KOBELCO SK210LC Log Loader	\$64,500
KOBELCO SK260LC LL, For Cab	\$125,000
KOEHRING 6625 Log Loader	\$18,000
KOMATSU PC300HD Log Loader	\$37,500
PRENTICE 610 LL, KW Truck Mt	\$27,500
THUNDERBIRD 634 Log Loader	\$44,500
THUNDERBIRD 1238 Log Loader	\$39,500

FELLER BUNCHERS, PROCESSORS

CAT 320C/Waratah HTH622B	\$89,500
CAT 322C/Pierce 3348 Stroker	\$55,000
DOOSAN DX300LL-5/Pierce GP	POR
JD 792D/Pierce 3345 Stroker	\$59,500
KOBELCO SK260LC, Ponsee Harv	POR
KOBELCO SK290LC, Rear entry, Keto 800	\$125,000
KOMATSU PC128/Log Max Harvester	\$39,500
KOMATSU PC220LC/Pierce 3348 Stroker	\$119,500
KOMATSU 450XT FB/Quadco 24" 360	\$205,000
KOMATSU 450XT Quadco 24" 360, low hrs	\$269,000
LINKBELT 350X2/Waratah HTH624C	\$117,500
MADILL 2800/Denharco DM3500	\$35,000
MADILL 2850B FB, Quadco 360	POR
THUNDERBIRD 1236/Denharco DM3500	POR
TIMBCO T445, Bar Saw	\$45,000
TIMBCO T445C, Quadco 22", nice!	\$79,500
TIMBERJACK 2628, Bar Saw	\$29,500
WARATAH HTH-623C, NEW Inventory	POR

TOWERS & YARDERS

CHRISTY Yarder, Truck mount	\$49,500
KOBELCO SK300LC Yoder/Tong	POR
LINKBELT 370LX LL "Yoder"	\$112,500
MADILL 071, 3-Guys, 8V71	\$85,000
MADILL 071, water on skyline, nice!	POR
PSY-200, Self-Propelled, nice yarder	\$199,500

SKAGIT BU-80C, T-90 Trailer Mount	\$32,500
SKAGIT GT3 Track Mount, reduced	\$65,000
THUNDERBIRD TMY45, Trlr Mnt	\$85,000
THUNDERBIRD 6140 Swing Yarder, nice	POR
WA 78-40 Swing Yarder	\$42,500
WA 127W, T90, Trailer Mnt, reduced	\$24,500
WA TL6 3-Axle SP, 50' Boom	\$29,500

**EXCAVATORS/DOZERS/GRADERS
WHEEL LOADERS/SKIDDERS**

CAT D4H TSK Track Skidder	\$49,500
CAT 14E Grader	\$14,500
CAT EL240B Excavator	\$18,500
CAT 515 Grapple Skidder - in soon	POR
CAT 966D, Medford Log Forks	\$49,500
CAT 980GII, Medford Log Forks	\$59,500
DOOSAN DX140LC-5, low hrs	\$135,000
DOOSAN DL400 Wheel Loader	POR
FIAT-ALLIS 8, Winch/Arch	\$18,500
FMC 210 Track Skidder, Grapple	\$34,500
GARRETT 25 Skidder, Cummins	\$12,500
JD 200D Excavator	\$45,000
JD 2454D Rd Bldr, Excav, low hrs	POR
JD 892D Excavator	\$39,500
KMC Track Skidder, Grapple, low hrs	POR
LINKBELT 3900Q Excavator, Bucket/Thumb	\$27,500
MADILL RB500 (180 size) Excav, guards	\$45,000
MOUNTAIN Logger ML150, Clark Winch	\$16,500
MOUNTAIN Logger ML150, Cummins	\$12,000
TIMBERJACK 404 Skidder	\$8,950

CARRIAGES & MISC

CAT HF201 22" Disc Saw, tilt, low hrs	\$22,500
CEC Portable Jaw Crusher, Trailer Mnt	\$85,000
CTR 314SCD Pull-Thru Delimber	\$18,500
DANZCO PT20 Pull Thru Delimber	\$10,500
DIAMOND Z 1460 Tub Grinder, 2010	\$289,500
GENERAL Turkey Rack, like new	\$9,000
HAHN Harvester, 2-axle w/dolly	\$17,500
KETO 804 Processing Head	POR
MORBARK 30RXL Chiparvestor	\$110,000
OLATHE 10" Tub Grinder	\$39,500

TRUCKS

KW Log Trucks, details on request	POR
PEERLESS 3-Axle Log Trailer	\$19,500
PETERBILT Dump '92, 3406	\$35,000
WESTERN STAR LOGGER '94, clean	\$29,500



**DOOSAN Log Loaders
LOTS OF INVENTORY!**



**Doosan DX225LL-5 "Road
Builder"**P.O.R.



CAT 320C/WARATAH HTH-622B.
\$89,500



DOOSAN DX85R Excavator
New Inventory



1994 Western Star Logger, N14,
very clean\$29,500



DX300LC-5 Excavator
NEW INVENTORY

KETO • WARATAH • SOUTHSTAR • EAGLE CARRIAGE

Rich Lennox	(360) 508-0192	Jim Wark	(360) 623-5219	Tony Foglio	(360) 520-7084
Shannon Pesicka	(360) 507-0542	Cooper Brunoff	(360) 880-7534	Colton Moorhead	(360) 827-0262
Mike Duch	(360) 880-6955	John Griffin	(425) 210-9702		

Traci Brunoff • Sales Coordinator: (360) 880-7531

www.cascadetrader.net



(360) 748-1182

fax (360) 748-1198 •
Located at Exit 79 off I-5
1380 NW State Ave., Chehalis, WA 98532

FEATURED IN THIS MONTH'S ISSUE



SEDY TRUCKING & EXCAVATION

Richard Sedy Trucking and Excavation has three employees - **Richard, Austin and Dale Dorsett** - running with the longtime logger's philosophy to keep things small. Sedy has a **Linkbelt** and **Kobelco** shovel, Danzco delimber, D4 high drive grapple cat and a 2000 Western Star Dump truck.

Simington Square-Chisel Saw Chain Grinder

Get top performance from your pro chain saw by sharpening its square-ground-chisel saw chain with a Simington grinder.

The Simington #S451-C features:

- Die-cast aluminum body
- Flex-mounted work light
- Diamond-tipped dressers
- Grind-angle adjusters
- Reversible fan-cooled motor
- Carbide-tipped tooth locators
- Tripod work stand included



\$999.

MADSEN'S
SHOP & SUPPLY INC.
Centralia, Washington

☎ 360-736-1336
Information Calls
☎ 800-822-2808
Direct Order Line
www.madsens1.com

CASTLE ROCK, WA

Castle Rock is located in **Cowlitz County**. The city of just under 2,000 is between the Willapa Hills and western base of **Mount St. Helens**. Castle Rock is at the heart of Washington timber country in the Pacific temperate rain forest. Castle Rock is named for a volcanic rock outcropping over the Cowlitz River, "**The Rock**," rising 190 feet high on the south side of the city.



Need Financing? We Can Help!

We Finance Loaders, Trucks, Skidders, Trailers, etc.

- Working capital available
- Start-up program for under 2 years available
- 1st payment only
- 3,4,5 year financing
- 150K application only
- Finance any equipment or attachment...no age requirement
- Personal one on one financing process
- 27 years' experience in the financing industry

Isn't it time you made an investment in your machinery?

Call Doug Powell Today!

888-223-2600 • dee@fullcircellc.us

After hours cell: 509-393-5111

11 Spokane Street - Suite 306, Wenatchee, WA 98801 • www.fullcircellc.us



CC HEAVY EQUIPMENT



2005 Pete 379 Lowboy Truck. 700k frame miles W/25k on Cat C15 Platinum Inframe Rebuild. EGR delete has been done. 18 Spd Trans, Peterbilt Airtrack Susp., 46k RR's W/Double Lockers. New Clutch, & 4 Core Radiator. New 385-65-R22.5 Steer Tires. 8' slide. Custom paint, very clean truck \$89,000



2008 Kenworth W900. Cummins ISX 600 (600HP) 18 spd. Dual lockers. Lift axle available to reinstall. Vulcan scales. Inframe overhaul done 100k ago, replaced: reman head, reman turbo, new EGR cooler, new jakes, recored radiator, total cost \$27,000 (work completed by KW dealer in Phoenix) New brakes & drums in the last year. New compressor & condenser. 2008 Whit-log trailer\$79,000



ROB (remote operated bulldozer) tethering system mounted on a John Deere 850J dozer. Built 2 yrs ago, only used on one job. Nearly new equipment. Excellent condition.....call for price!



2009 Koller K301T Yarder and 1995 John Deere 7600 Tractor, Excellent Maintenance, Comes with Koller Carriage and Talkie Tooters, 1,200 Ft. of 5/8" Sky Line, 1,700 Ft. of 3/8" Skid Line\$72,500



98 Linkbelt Yarder, Holds 1800' of 5/8" on 2 Drums, 3306 Cat with Recent Rebuild on Injection Pump & Head, s Speed Allison Trans, Chain

Drive, Main Line Drum has been Sped Up. Comes with Talkie Tooters and Handheld with Base in Cab. Ready to Yard, Very Fast Machine. Comes with Acme 10 SkyCar for \$99,000



2006 Madill T2250B Feller Buncher With a Madill 360° Hot Saw, 11,800 Hrs., New U/C, New Crate Cummins Engine With 600 Hrs., Recently Through Shop, Recent Finals & Drives, Levelling Cylinders & Saw Head Work, Exc. Maintenance!...NEW PRICE!\$170,000



1997 CAT 322CL, 19,000 Hrs., Log Max 7000 Head, Hyd. Pump Has 5,000 Hrs., SureGrip Controls, New Injectors & Lines Recently, \$6000 Just invested into New Logmax Computer & Measuring Sensors, Ready To Work!.....NEW PRICE.....\$69,000

1962 Austin Western 300 Super Grader,

Detroit Engine, Hydraulic Controls\$7,000



1995 CAT 330L Yoder. New Motor and Pump. Main Boom Rebuilt. Turbo Overhauled. Drum Bearing and Seal. U/C 40-50%. Over \$140k in Service Repairs since 2010, Very Well Maintained, Detailed Service History Included\$160,000



1998 Timberjack 1270B Harvester With 746C Head, Brand New Front Tires, Comes With Parts Head, Excellent For Cut To Length\$49,000



1999 John Deere 748 GII Skidder. Fixed boom grapple, decent rubber with 4 good chains. Enclosed cab. New transmission 02/2016. New hydraulic pump 02/2017. Currently working everyday.....\$45,000



2012 Kobelco SK350 Log Loader, 5,400 Hrs., Jewell 63" Grapple, U/C 70%+, Nice Machine! NEW PRICE!!!.....\$200,000

NEW AND USED SKIDDER TIRES AND CHAINS AVAILABLE!



2012 John Deere 2454D with Waratah 622B Processor, 9,900 Hrs., U/C 75%+, Currently WorkingNEW PRICE \$169,000!!!



1998 Kobelco SK200LC Processor Equipped With A 2004 Waratah HTH 622 Warrior\$69,000

Quadco 22" Hot Saw Head, 40 Degree Lateral Tilt \$18,000



2007 Gyro-Trac GT-25XP, 1,320 Original Hrs., Like New Condition, Cummins 8.3, Runs Great, Tight Machine, Complete Uptime Kit For Head and Tracks, Comes with Pallet of Extra Track and Blade Parts.....NEW PRICE!\$99,000



1979 Skagit BU98 self propelled Slackline Yarder, CAT power, 600 HP, 110' HD tube, 8 guylines, completely rebuilt, Very straight, includes lines. New 1 3/8" Swedged X 2800' Skyline, & a skid-line. Guyline extensions, screws, double enders, Radios. This machine has been working lately. Job Ready\$310,000



1999 Timbco 445D with Waratah 230 Processor Head, 10,500 hours, Runs Great! 8.3 Cummins, Strong U/C, Nice Processing Setup \$69,000



1997 CAT D5M LGP Crawler Dozer, 9,765 Hrs., 6 Way Dozer, Rear Hitch and PTO Installed, U/C 65%+, Sprocket Segments at 90%, New Computer & Transmission Service Done by Peterson CAT, Nice Running CAT!\$46,500



Skylead Yarder with 2010 Super Eaglet, 5.9 Cummins with Allison Trans., Comes With All Lines, Currently Working \$119,000

CCHEAVYEQUIPMENT.COM

Dallas/Salem Rickreall, OR

Carl Cornthwaite • 503-507-7230 • carl@ccheavyequipment.com
Lincoln Cornthwaite • 971-901-1333 • lincoln@ccheavyequipment.com

Rigging Shack

(Continued from Page 2)

same tactics. They did it because it worked.

Some of these old timers had savvy way ahead of their time. Some of them were great motivators. Ben McClure for instance used to talk to each member of his crew and carry around good information. He'd say something like this when talking to the hook tender; "You know we are lucky to have Scrap Iron run yarder for us. He is one of the best and he knows logging. He has a high regard for you and often tells me that you are one of the best hook tenders he has ever worked with." Then he'd go tell Scrap Iron the same thing about the hook tender. It worked well, led to lots of logs and a lot of fun while getting them.

Ben was getting what he wanted and he was giving his crew what they wanted. He was giving them some pride, a knowledge that he and other people thought highly of them, wages, a good job, a fun place to work and lots of appreciation to bolster their self esteem.

"WHAT DO YOU WANT?"

Are you sure what you want? Can you tell a good friend just exactly what you want and why you want it? Can you relate to all the factors involved in get-

(Continued on Page 24)
See "Rigging Shack"

PACIFIC FIBRE PRODUCTS

WANTED

Alder, Maple, Douglas Fir, Cedar
Hemlock, Cottonwood

PULP LOGS

Land & Timber or Timber Only
Paul Hadaller • 360-431-9661

Rob Vance • 360-355-2817

P.O. Box 278, 20 Fibre Way, Longview, WA.
Office: 360-577-7112

**WE ARE NOW PURCHASING
LOGS IN MOLALLA, OREGON!**

**Oliver-Hammer
Clothes Shop**

**Clothing the
Working Man for
97 Years**

Wesco Caulk Boots, Redwing,
Carolina, Carhartt, North Star
Gloves, Hickory Shirts,
Logger "Riggin" Jeans and a
Whole Lot More

(360) 855-0395

821 Metcalf,
Sedro Woolley, WA 98284



GENERATIONS

OUT IN THE WOODS

Austin and Richard Sedy keep the family lineage going out in the woods

Austin Sedy has logging in his blood from both sides of the family. On his mom's side it probably goes back five or six generations, while on his father's side, it goes back three or four. So naturally he's working for a company with his family name on it, Richard Sedy Trucking and Excavation, located in Castle Rock, Wash.

His grandfather Richard has been in the logging industry all his life, going at it on his own and getting his first truck in 1983.

"I went to work when I was 18-years-old and soon after, I got married," Sedy said. "I had to provide for my

(Continued on Page 9)
See "Sedy"

NICE-LOOKING LOAD

Dan Holum with his Pete 379 log truck gets loaded by Richard Sedy in the Kobelco SK210LC. Dan's truck is equipped with an Alpine trailer and has over 1.475 million miles. Dan started hauling for Richard Sedy after talking with him at the "End of the World" Rod Run. Dan takes his Chevy SSR out to a few shows.

New! EAGLE RAPTOR



We
Also Have
Eaglets,
Super
Eaglets,
Eagle IV,
Eagle V,
Eagle VI
& Claws
Available

EAGLE CARRIAGE & MACHINE

ECM CONTROL ON
ALL NEW MODELS!

(541) 963-4646

Fax: (541) 963-3415

62500 Commerce Rd, La Grande, OR 97850
www.eaglecarriage.com

After Hours - Sam Baker
(541) 805-9504 cell

What you need now will affect how your business grows.
And that often means getting financial assistance.

BUSINESS EQUIPMENT LOANS

- New / Used/ RTO
- Dealer or Private Party
- Seasonal and Annual Payments
- Start ups
- Engine Overhauls
- Working Capital
- Refinance
- Debt Consolidation

With over 30 years of lending to the forest products industry, Mike can offer solutions for all of your equipment needs. His experience makes the process simple and time saving.

MIKE LOBB

mlobb@bizequiploans.com • www.bizequiploans.com
CELL: 503-784-3935 • OFFICE: 971-204-0038

(Continued from Page 8)

family and it was kind of in the family as my dad was a logger and a mill owner."

Since then he's had anywhere between one and eight trucks, a couple shovels, a cat and a skidder.

"I've tapered back down and tried to do a lot of work myself and then I tried to retire," Richard said with a

laugh. "But my grandson coerced me into keeping at it. He kept asking if I had work for him."

According to Austin, Richard had been so busy that he had 3-4 jobs lined up in front of him.

"I had worked rigging for five years and wanted some change," Austin Sedy, a 2012 graduate of Castle Rock High School, said. "He needed some timber cut and I've always

wanted to one day own my own company and figured that this would be my shot."

Austin knew he was probably going out in the woods for work after growing up in it.

According to Richard his "close to retirement" still included jobs here and there and then work began to pick up a year ago. That's when Austin came to ask him and he wanted to increase his workforce to three people.

"We've kept him busy and we get along with each other," Richard said. "He's trying to learn everything there is."

"It's a good place to work," Austin said. "He's a good guy to work for."

Richard Sedy Trucking and Excavation has three employees - Richard, Austin and Dale Dorset - running with the longtime logger's philoso-

(Continued on Page 10)
See "Sedy"



2005 ZEHR HG4000 GRINDER, early Diamond Z, 2009 CAT C27, Tier II, 1,050 hp, remote, stacking conveyor, 8 NEW tires, good brakes, twin-disc clutch, hammer-mill approx. 62" x 17".....\$129,500



2002 PRECISION HUSKY 66-23 CHIPPER, Husky XL-175 loader, CAT 3412, 700/750 hp, Tier I, joy sticks, twin-disc clutch, feed table w/feed chain, cab, 12 NEW tires, good brakes, fresh oil, new paint, recent injectors, one owner, was working daily, 11,141 hours.....\$99,500



1996 PETERSON 4400B GRINDER, CAT 3412 @ 800 hp, 3 axles, all new tires, twin-disc clutch, dual horizontal rams for feed, heavy rotor, good last clean older unit, approx 87,000 lbs. w/o tractor.....\$79,500



MORBARK 20 CHIPPER, new CAT C13 with 3,684 hours, 385 hp, Tier III, new tires, good brakes, lights.....\$69,500



2008 VERMEER BC2100XL CHIPPER, Cummins diesel, approx. 275 hp, new knives, clutches, PTO, hyd feed rollers, 5,227 hours, good for age and hours.....\$55,000

SHOP-BUILT BRUSH RAKE, removed from CAT 518, approx. 110" wide, (9) 12" shanks, low hour unit.....\$2,000

NEW HEEL RACK FOR CAT 330FM OR 568 FM, unused, some pins.....\$7,500

MPI

INCORPORATED

Call Chuck
530-221-6760

8537 Commercial Way, Redding, CA 96002

chuck@mpiequipment.com

www.mpiequipment.com



2014 JOHN DEERE 748H SKIDDER, dual-function boom, grapple, winch, direct drive, good 30.5 tires, tight center, runs well, 6,990 hours.....\$139,500



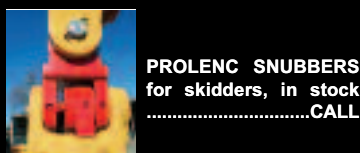
2013 JOHN DEERE 290G LC HYDRAULIC EXCAVATOR, Q/C, link style hyd thumb, good a/c, just arrived.....\$149,500



2007 PROMAC 52 II Brush Cutter, removed from CAT M322C, (320C), disk style, good cond. prior county, approx.



BTI SH550R Shear, second member, for 330-Size and up carriers, 1,600 Hours.....\$50,000



PROLENC SNUBBERS for skidders, in stockCALL



WASHINGTON 188 YARDER, Detroit 8V92T power, 4-axle carrier, standing skyline. This is a good, clean unit that was working as of 06/10/16. Consigned, call for location.....\$250,000

EAGLET CARRIAGE, w/controls available.....\$18,000



1996 CHRISTY 3DTK, 6-cyl Cummins, 2000' 3/4" swedge skyline, approx. 2000' 5/8" swedge mainline, haywire, guy lines, NO carriage, 75MHz radio system, approx. 6,500 original hours, mounted on Freightliner w/Cummins power, heavy 2-speed rear ends, biscuit suspension, good clean unit. Yarded logs until October 15, 2015. Owner is downsizing, consigned, call for location.....\$75,000



2004 TEREX TH842C REACH LIFT, 8,000 lbs, 42', 48" forks, very good foam-filled tires, Deere diesel, hours N/A, nice machine.....\$32,500



2008 CAT 14M VHP, 16' board, push block, rear ripper, good 20.5 tires, AC, Ac-cugrade-ready, clean unit, Tier III, runs & shifts well, 8,155 hours.....\$155,000



2012 CAT 12M VHP PLUS, rear ripper, push block, 14' board, 14:00x24 tires, former county machine, sold new August 2012, 4,795 hours.....\$147,500



2008 CAT 140M AWD VHP PLUS, 14' board, rear ripper, 14:00R24 radials, 6x6, cab, AC, orig paint, 6,252 hrs.....\$129,500



2010 JOHN DEERE 770G, 14' board, push block, rear ripper, aux hydraulics, 17.5 radials, cab, air, fair paint, prior county unit, good machine, 7,633 hours.....\$109,500



2010 JOHN DEERE 770GP, 14' board, push block, rear ripper, Pilot controls w/ steering wheel, aux. hydraulics for snow equipment, very good 17.5 Bridgestone-tires, cab, AC, NEW paint, prior county unit, 8,105 hours.....\$110,000



2015 CAT D4K2 XL 6-way dozer, rear ripper, open ROPS, wired, fair undercarriage, 2,087, just off job.....\$89,500

CRISP LOG FORKS/GRAPPLE, fits CAT 950B/E/F, good for age.....\$2,500



2013 LINK-BELT 300 X3, Esco hydraulic QC, Esco link hydraulic thumb, good undercarriage, Isuzu engine, AC, radio, nice unit!, 2,619 hours.....\$137,500



2013 LINK-BELT 145 X3 Spin Ace, Esco bucket, Isuzu engine, pattern changer, cab, AC, good clean unit.....\$79,500



2012 JOHN DEERE 210G LC, hydraulic QC, hydraulic thumb, 32" tracks, good unit, 4,653 hours.....\$125,000



2013 VOLVO EC35C, new bucket, new Amulet thumb, blade, off-set boom, good clean machine, prior rental, 1,406 hours, located in McKinleyville, CA, call Mark at 707-499-6263.....\$27,500



2013 FREIGHTLINER M2 TRUCK TRACTOR, 330,723 miles, Cummins 1SL9-380, 380HP, engine brake, 10sp, air ride, new 2018 Randco 3,750 gal tank, 5 sprays, hose reel, hyd fill, nice tank.....\$65,000



2010 T800 Kenworth Cummins 365HP, CARB compliant, 10sp, air ride, alloy wheels, 2018 Randco tank, 2200 gal, 5 sprays, hose reel, hyd fill, 468,000 miles,\$55,000



CLEANING UP

Austin Sedy performs some clean up with the Kobelco SK210LC with Jewell boom and grapples. They were just finishing up a job on some private ground near Clatskanie, Oregon.

Sedy

(Continued from Page 9)

phy to keep things small.

Sedy has a Link-Belt 2800 and Kobelco SK210LC shovel, Danzco delimber, D4 high drive grapple cat and a 2000 Western Star dump truck.

"They do the cutting," Richard said. "I do a lot of things except for that and they do just about anything else."

With a focus on underserved private ownership jobs, the company can do jobs from just two acres to 40-50 acres. They also do excavation, land clearing and road building.

Richard does the mechanicing unless the job is too

time consuming and then the work gets farmed out.

While there is plenty of work in the Castle Rock region they have been known to head out of the area. A normal day for Richard is a busy one, he can end up on the shovel or spend several days turning wrenches.

And for Austin?

"I don't think I've had a normal day since starting here," he said. "I've been cutting, running shovel, chasing and pretty much anything that needs to get done. I like the mixup and always doing something different."

For hauling things out the 2000 Western Star dump

(Continued on Page 11)

See "Sedy"

WRECKING LOGGING EQUIPMENT

EXCAVATORS • CRAWLER TRACTORS • ROCK TRUCKS • LOADERS • GRADERS



Parting Out

2007 Cat 324DFM



Parting Out

2005 Link-Belt 370LX



Parting Out

2006 Cat 950G II



Parting Out

2013 Deere 225DLC



Parting Out

2000 Hitachi EX270LC5



Parting Out

1996 Hitachi EX400LC3



Parting Out

2012 Deere 135D



Parting Out

2004 Deere 953G



Parting Out

2005 Kobelco ED150



Parting Out

2004 Deere 200CLC

FRALEY TRACTOR, Inc. WRECKING DIV.

(509) 884-7117 • FAX (509) 884-3959 • fti2@nwi.net • 1850 GRANT RD., E. WENATCHEE, WA 98802

CAT EXCAVATORS

314C; 315BL; 320LL; 320BL; 320C; 322CL; 324D; 325C; 325L; 330BL; 345BL; 345CL; 350L

CAT TRUCKS

D25D; D250E; D300E; D400D

CAT SKIDDERS

D5H; D4H; 525; 527; 525C

CAT SCRAPERS

615,621E

CASE

821; 9030B; 9040B; 9050; 9050B; 9060B

GROVE

RT745

LINK-BELT

210LX; 240LX; 290LX; 350LX; 370LX; 5800 CII-Q; 6000Q

KOBELCO

ED150; SK290LC6; SK200LC IV; SK400LC IV; SK330

JOHN DEERE

120C; 135D; 160DLC; 200DLC; 225DLC; 2554; 330CLC; 350DLC; 450DLC; 550H; 544J; 544G; 600CLC; 624G; 644H; 644G; 648GII; 710D; 750B-C; 744H; 753GL; 772BH; 844J; 850J; 992D-ELC

SAMSUNG

SE 350LC2

TIMBCO

T425B-C-D; T445B-C-D; T445EXL; 475D; 475EXL

TIMBERKING

TK722; TK732; TK1162

KOMATSU

PC120-6; PC130-6; PC138US-2; PC220LC7; PC160LC-7; PC200LC-6; PC220-6E; PC228USLC-3; D155AX5; D355A; WA 200-1; WA180-1; WA400-1; WA320-1; WA180-3; WA250-3; WA500-1-3-6

TIMBERJACK

608; 628; 1210B; 2628; 1270B

HITACHI

ZX27U; ZX120; EX150; EX160; ZX200LL; EX200-5; EX200LC3; EX220-3; ZX270LC3; ZX330 ZX350LC; EX330LC5; EX400LC3; ZX450LC; EX550LC5; EX700; EX750-5; ZX850LC3

VALMET

EX10; 500T; 860; 892

VOLVO

A25C 6x6 Rock Truck; L330C; L120E; L180C; L220E

WE BUY HEAVY EQUIPMENT FOR PARTS AND RESALE...CALL US!

Visit us on the web at: www.fraleytractorinc.com



truck is good for the small stuff and the small logs. To move around equipment, Richard calls upon Heavy Hauling out of Kelso.

"I worked for them for a year and a half and I know the guys well," Richard said. "I've always kept in our equipment where it needs to go."

When the company is done with the job, Richard wants the work to be clean and the jobsite nice-looking for the property owners.

The idea is eventually Richard can retire and Austin can take over. That will add another notch to the Sedy generational line of loggers.



LINK BELT 2800

Dale Dorset cleans up some steep ground with the Link-Belt 2800. When the company is done with the job Richard wants the work to be clean and the jobsite nice looking for the property owners.

HARVESTER BARS - RIM SPROCKETS - REPLACEMENT TIPS - MEASURING WHEELS - BAR REPAIR - CHAIN - CHAIN LOOPS

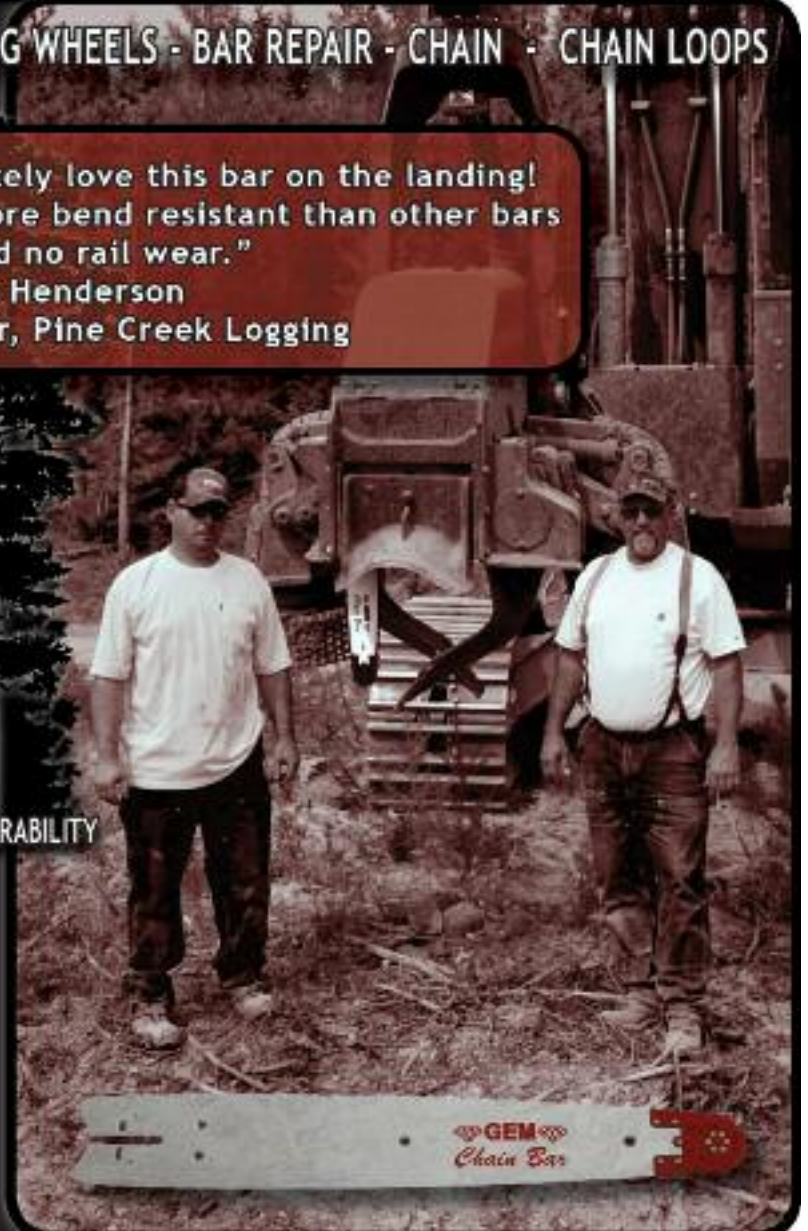
"Absolutely love this bar on the landing!
It is more bend resistant than other bars
and had no rail wear."
- Steve Henderson
Owner, Pine Creek Logging

GEM
Chain Bar
MAXIMIZE YOUR RUNTIME

ADVANCED TECHNOLOGY . EXTENSIVE FIELD TESTING . CUTTING-EDGE MATERIALS . UNMATCHED DURABILITY

In 1989, loggers established GEM with a vision of quality, readily available products for the developing mechanical harvester industry. GEM still works closely with loggers through extensive field testing and design input, continuously creating innovative, durable products. Real people who really listen, a big part of the GEM difference. Combining real world input with advanced manufacturing methods and cutting-edge materials, GEM helps you maximize your runtime with the highest quality and best technology at reasonable prices.

800-455-8471 - sales@gemchainbar.com - www.gemchainbar.com





THEN AND NOW

Austin Sedy on the left as a kid riding with grandpa Richard in the Link Belt 2700. (Right) Austin's daughter gets the same loader ride from her dad. Raising this kid right I think!



TAKE YOUR CHILD TO WORK DAY

LOGGER STYLE

Austin has a youngin of his own that has the proper headgear.



Dan Holum with his Pete 379 log truck. This veteran truck has about 1.475 million miles and runs Alpine log gear





Dale Dorset was operating the Link-Belt and was kind enough to hop out to pose for the Loggers World photographer.



Dale Dorset using the Link-Belt to do some cleanup once the logging is done. The landowner is going to convert this to pasture so extra time and effort is being taken to help accomplish the conversion.

TRIAD MACHINERY

Portland	Eugene	Prineville	Seattle	Spokane	Mt. Vernon
800.221.8512	800.342.6780	888.662.2940	800.622.8876	800.945.9168	360.488.3948

MOVE WOOD

LOG-CHAMP YARDER

T-MAR INDUSTRIES LTD. **MAKING OUR CUSTOMERS MORE COMPETITIVE**

END GREASING FRUSTRATION

ORDER ONLINE OR CALL

GREASE GOES IN, NOT ON, THE MACHINE

LOCKNLUBE.COM | 603.795.2298



TRAVELING BACK IN TIME

*Appelo Archives
Center in Naselle
recounts rich
logging history
and Finnish
heritage*

Photos by Kevin Core
Story by Brandon Hansen
For Loggers World

Founded by Carlton Appelo, the Appelo Archives Center in Pacific County shows the rich logging and Scandinavian history of Naselle and the surrounding Grays River Valley area. At the turn of the century, many Finnish settlers moved to the area and logging became a necessity to clear land for their farms.

Appelo Archives was Carlton's dream come true in 2010 when he remodeled the second story of the former Appelo Shopping

Center in Naselle to become a non-profit archives housing oral interviews, historical photographs, period newspapers, area memorabilia and library. "It was Carlton Appelo's dream to do this," archives board member Keith Metcalf said. Keith has been on the board for six years. "Carlton was instrumental in getting the Archives going here."

Keith also worked for Weyer-

(Continued on Page 17)
See "Appelo"



QUITE THE COLLECTION

It's quite the collection of climbing gear, chokers, straps, blocks, marlinspike, etc. displayed under a vintage Weyerhaeuser sign at the Appelo Archives in Naselle.

Worker's Compensation for Loggers!

and your liability needs, too.

Many of you know us as the agency to see for Disability Income, Medical and Life Insurance... but we are a full-service agency with packages dedicated to the logging industry and related businesses. We have excellent markets for:

- Worker's Compensation
- Commercial General Liability
- Logger's Broad Form
- Commercial Auto
- Cargo
- Commercial Property
- Inland Marine (Your Iron)
- Bonds



Photo courtesy of Jodie Compton

Call today for more information!
866-514-3356 Toll-Free!

360-274-6991 • 25 A Street SW, Castle Rock, Washington 98611

Wayne Lunday, LUTCF, CLU, ChFC

Aaron Lunday

Gail Mowrey, ACSR, CMSR, CRIS

Commercial Insurance Manager

**HIGH
CASCADES
insurance**

A full-service, True Multiline Agency Dedicated to the Logging and related Industries
Licensed in WA, OR, CA (OD43750), ID, MT & AK
Commercial Insurance, Personal Insurance, Life, Disability Income,
and Individual and Group Medical Plans



**COWLITZ
RIVER
RIGGING**

Full Service Shop

Full Service Rigging, Saw Repair & Work Clothing

www.LoggingSupply.com

Toll Free 1-800-488-3127

Appelo

(Continued from Page 14)

hauser for 40 years and is very familiar with his home community.

Carlton and his father C.A. were instrumental in bringing modern telephone service to the area by shepherding the local telephone company from farmer lines to fiber optics and was the chairman and CEO of the Wahkiakum Western Telephone

Company. All this paved the way for the cable and phone company, Wahkaikum West.

The Appelo family also owned several retail stores in the area.

With easy access to the Deep River and Grays River Valley rivers that flowed into the Columbia River, logging had become a staple to the economy and Appelo Archives Center captures that with artifacts, photos and more. The archives got their 501-C3 in 2010, and host an old-

time logger event every year to celebrate a time in the past.

"They've been hosting the get together since the 1970s, but obviously the archives didn't exist back then but we started hosting it," Keith said.

Kelly Shumer is the museum director and has been working hard to promote the museum.

"People are welcome to bring in their old photos, stories and heirlooms from our area's history," Shumer said.

When it comes to regional history, museums like the Appelo Archives are invaluable in preserving heritage of a community. Along with their collections and events, the museum also facilitates genealogical research.

Downstairs in the museum is a cafe, a bookstore and the archives' logging heritage room. On the main floor upstairs, the local museum showcases the communities along the Washington side of the Columbia River. Some of these booming small towns have since faded in history.

Deep River Logging was one of the first big logging operations in the area, began by Simon Benson. It was eventually

(Continued on Page 18)
See "Appelo"

CALL US FOR ALL YOUR DOOSAN NEEDS

Ask about our
Finance and Lease
Specials!

DOOSAN

Authorized Dealer

- Parts
- Service
- Sales
- Rental
- Lease

Feenaughty
EST. MACHINERY CO. 1901

Serving the Northwest Since 1901

(503) 282-2566

Fax: (503) 282-1755

4800 N.E. Columbia Blvd., Portland, Oregon 97218

(541) 636-3660

541-357-4542

9404 Highway 99 N., Eugene, Oregon 97401

feenaughty.com

KENWORTH T800 4-AXLE CHASSIS



8 Trucks

To Choose From
YOUR CHOICE

\$55,000

Cummins ISX Engines,
18-speed trans. (RTLO18918B),
Single speed Eaton rear-ends
4:10 or 4:11 gears w/locker
**Hendrickson Haul-max
walking beam susp.**

#7 R087298 2005, D46-170HP
rears, 270" WB, 475hp \$55,000

#18 R118638 2006, D46-170HP
rears, 252" WB, 475hp \$55,000

#38 R892655 2002, DSP-463P
rears, 252"WB, 475hp \$55,000

#69 R148686 2006 D46-170HP
rears, 252" WB, 475hp \$55,000

#79 R179275 2007 D46-170HP
rears, 252" WB, 475hp \$55,000

#87 F064742 2004, DSP-463P
rears, 252"WB, 475hp \$55,000

#93 R087300 2005, D46-170HP
rears, 252" WB, 475hp \$55,000

#114 R892657 2002, DSP-463P
rears, 252"WB, 475hp \$55,000

CLEAN AND IN EXCELLENT SHAPE!
Maintenance Records - Regular Oil Samples
For More Info: www.irelandtrucking.com

Thomas H.
IRELAND
INCORPORATED

Call Charles Ireland
541-863-1501
Myrtle Creek, OR



IN THE MUSEUM

ABOVE: Appelo Archives Center board member Keith Metcalf and director Kelly Shumer keep the museum running smoothly. When it comes to regional history, museums like the Appelo Archives are invaluable in preserving heritage of a community. Along with their collections and events, the museum also facilitates genealogical research, Scandinavian students and even a library.

UPPER RIGHT: An early chainsaw - the David Bradley Three Sixty - which is gear driven.

LOWER RIGHT: This cross section cut of big tree from the area was 415 years old when harvested. It was cut by Ken Wirkkala in 1974.



www.acmecarriages.com

FORTRONICSTM LTD
FORESTRY ELECTRONIC CHOKER SYSTEMS



ACME
Manufacturing Inc.

90099 Prairie Road
Eugene, OR 97402

Phone 541-741-2200

After Hours: 541-554-9414



Appelo

(Continued from Page 14)

bought by the Olson Brothers and it continued to be a big company for the Naselle community. They logged the Salmon Creek and the upper Naselle drainages and they were one of the early adopters of log trucks, hauling logs to a train reload area in the early 1940s.

After Deep River Logging, Weyerhaeuser and Crown Zellerbach were two major operations that moved into the area in the 1950s with both companies employing about 170 people each.

Otto Oja from the area was also a close friend of *Loggers World* and along with being a cutter for Weyerhaeuser, he made many

carvings and wrote poems - some of them ending up in *Loggers World*.

The archives also house one of the very first choker bells, invented by Oscar Wirkkala. He still has many descendants in the area, and had over 40 patents, many in the logging industry.

The C.A. and Agnes Appelo, Memorial Library, named after Carlton's parents, has over 400 books. Agnes Appelo worked in the family owned stores and was a regular on the logging trains to sell goods to the local logging camps.

Carlton, her son, collected books on history for a good part

(Continued on Page 18)
See "Appelo"



**ONE MACHINE.
DUAL PURPOSE.
IT'S A GRAPPLE.
IT'S A PROCESSOR.**

GP™

HOW CAN THE PIERCE GP WORK FOR YOU?

The Pierce Grapple Processor is the only machine you need on your work site. Because only the Pierce GP grapples, shovels and sorts like a loader—and delimbs, measures and cuts like a processor. Valuable time, labor, maintenance, fuel, and transportation costs are saved by combining your processor and loader into one single machine, reducing the equipment needed to perform a job historically required by two.

That's the GP difference. For more information on the GP, and other Pierce products, find us at www.piercepacific.com or call us at 800.760.3270.

P
PIERCE

WWW.PIERCEPACIFIC.COM TOLL FREE: 800.760.3270
PORTLAND, OREGON



Kelly and Anita
Kelly Shumer (left) and Anita Raistakka (right). Kelly is the Director at the Appelo Archive Center and Anita took time from her busy schedule to fill in our tour with many interesting and amusing details.

Appelo Archives Center

Logging Museum, Library and Bookstore



Our best selling book:

"When Logging Was Logging" is available for purchase in store, online, and over the phone!

1056 SR 4 Naselle, WA 98638

360.484.7103

info@appeloarchives.org

www.appeloarchives.org

The Appelo Archives Center specializes in preserving and presenting the history of the Naselle-Grays River Valley area of SW Washington. The Archives offers a museum, local genealogy, library, archival material, and bookstore.

Open Tues.-Fri 10am to 4pm and Sat. 10am-2pm

Photo:

Deep River Logging Co.'s
Shay No. 5 at the Deep
River log dump, 1912.





ABIGAIL BENNETT

The Finnish Library in the archives contains over 600 books, many in English as well as Finnish and includes political history, music, arts, local history and children's stories to name a few. The museum also displays Finnish costumes and clothing. Helping is Abigail Bennett, the Library Assistant at the Appelo Archive Center.

Appelo

(Continued from Page 17)

of his 90+ years. The library books are available for research on local and national history to our members. A full section with Finnish language books is also available. The Finnish books include political history, music, arts, local history and children's stories to name a few. The museum also displays Finnish cos-

tumes and clothing.

"Calton was instrumental in collecting a lot of the books and photos," Keith said. "I don't think any of these items were bought but rather donated." Carlton, now 96, is in a retirement home but is considered the biggest contributor to the archives.

The Archives also has a recreation of an old logging camp house as it would have looked in the 1930-1950s era. This particular display was made possible

by a grant from the Rayonier Foundation.

"There are many families with Finnish roots in Naselle and with those generations of families you will still find many of the cultural traditions still practiced and honored here." Shumer said.

Keith said that many people coming through the area stop for the logging museum and then check out the Finnish heritage exhibits.

The town of Naselle hosts a

Finnish American Folk Festival every two years and over 2,000 people are expected to attend this year's event on July 27th, 28th and 29th.

"I think if you're headed to the coast along Highway 4, Appelo Archives is a nice spot to visit and check out," Shumer said. "We have a café, museum, bookstore and library. Stop by and say hello next time you are out this way."



I BUY LOG SKIDDERS



- Dozers
- Loaders
- Excavators

1-503-545-0007

Introducing

NAS 
NORTH AMERICA SUPPLY

www.NorthAmericaSupply.com



Your new link to www.tirechainsrequired.com and www.harvesterbars.com. These two sites are coming together to offer you all the same high quality brands you've come to know and trust in one convenient online location. Tire chains, saw bars, saw chain and hot saw teeth delivered straight to your door.

Visit or call toll free to speak with a rep at
1-855-255-0871

sales@northamericasupply.com
Logging and industrial supplies,
wire rope, chain and
accessories coming soon!

American Chains



CARLTON

Ballantine

HAND SPEEDER

Here is a hand speeder from early logging near Deep River, where logging began in this area. Deep River Logging was one of the first big logging operations in the area, began by Simon Benson. It was eventually bought by the Olson Brothers and it continued to be a big company for the Naselle community. They logged the Salmon Creek reloads and they were one of the early adopters of log trucks, hauling logs to a train reload area in the early 1900s.



**ZENDER EQUIPMENT
COMPANY**

**Contact: Kevin Zender (360) 319-7973
Rod Hansen (360) 520-6849
Bob Howell (541) 913-9559**

Email: kevin@zenderequipment.com
rod@zenderequipment.com • bob@zenderequipment.com
www.zenderequipment.com • Everson, WA

LOG LOADERS

2016 JD 2954D LL, w/Jewell grapple, 4,400 hrs, very good cond	\$287,500
2006 JD 3554, w/Jewell grapple, 14,000 hrs, auto lube system	\$80,000
2012 Cat 568LL, w/grapple, 6,500 hrs, xlent cond	\$260,000
2010 Cat 568LL, w/Cat grapple, 12,500 hrs, good cond	\$190,000
2017 Cat 324DFM, w/Cat grapple, 1,400 hrs, avl. w/Pullmaster HL-25-3 winch, like new cond	POR
1993 Cat 330A, w/two HL-25 Pullmaster winches & grapple	\$135,000
2000 Cat 325B, w/Jewell 58" grapple	\$45,000
1996 Komatsu 360LC, w/Pierce grapple, cw lots of parts and & new uc rails, idlers	\$35,000
2006 Madill 800, 7,200 hrs, xlent cond	\$125,000
2006 Link-Belt 290x2, w/two HL-25 Pullmaster winches, w/tong tosser & grapple, 16,500 hrs	POR
2015 Link-Belt 290x2, w/grapple, 6,500 hrs, xlent cond	\$260,000
2014 Link-Belt 290x2, w/Jewell 63" grapple, 9,500 hrs, new u/c, very nice loader	\$210,000
2005 Hitachi 350LL, w/Jewell grapple, recent motor & hyd pump, good u/c	\$90,000
2003 JD 270, w/Pierce grapple, recent repairs	\$45,000

DELIMBERS

2010 JD 2954D, w/2010 624C, recent motor, boom line bored & bushed, new rolls, idlers	\$180,000
2016 JD 2954D LL, w/2016 South Star QS 600, 4,600 hrs	\$457,000
2015 JD 2954D LL, w/2015 623C Waratah, 6,100 hrs, good cond	\$437,000
2014 JD 3754D, w/2006 Waratah 624 Super, rear entry cab, 9,000 hrs on carrier	\$280,000
2007 JD 2554, w/Waratah 624 Super, 12,500 hrs, recent motor, pumps, good u/c, head is in good cond	\$129,500
2012 JD 2154D, w/Waratah 622B, recent motor & pump, 17,000 hrs nice machine	\$85,000
2006 JD 2054, w/06 Waratah 622B, new fuel pump, injectors, good u/c, recent rblt motor, pump, 3/4 butt saw	\$80,000
2012 Madill 2850C, w/2012 Waratah 624C, 11,500 hrs, Cummins power	\$185,000
2007 Hitachi 350LL, w/Waratah 624 Super, 15,500 hrs, good UC, new swing bearing, good cond	\$110,000
2013 Link-Belt 290X2 LL, w/2013 Waratah 623C, 10,000 hrs, very good cond	\$260,000
2013 Link-Belt 290X2 LL, w/623C Waratah, 11,500 hrs	\$220,000
2011 Link-Belt 290X2, w/2011 Waratah 623C, 11,000 hrs, road build front	\$185,000
2006 Cat 320C, w/06 Waratah 622B, good u/c, 18,500 hrs, nice processor	\$70,000
1996 Timbco 445, w/Waratah HTH 620, buncher boom	\$25,000
1996 Valmet 500T, w/Valmet head and squirt boom	\$25,000
1998 Timber Jack 1270B, w/TJ 762 head, good rubber, w/track chains and lots of spare parts for head	\$35,000
2004 Timberpro TB620 E, w/Logmax 7000, 12,000 hrs, good rubber	\$140,000
2013 Cat 324DFM, w/DM 4550, xlent cond, 9,700 hrs, very nice limber	POR
2004 JD 2554, w/DM 4400, good running delimber, 18,800 hrs	\$65,000
2001 Cat 320B, w/DT 4400, recent repairs & spare parts, 14,000 hrs	\$60,000

ROAD BUILDERS

2006 Gradall XL4100, w/buckets, 41,000 miles	\$57,500
2016 Cat 568, w/new pin grabber, w/36" digging & clean up buckets & thumb new, 1,870 hrs, like new cond	POR
2007 Case CX 330, w/new pin grabber bucket & thumb, new paint, 7000 hrs	\$75,000
2000 Kobelco SK290, w/thumb and 2 buckets	\$75,000

BUNCHERS

2013 Tigercat LX830C, Tigercat 5702 350 rotation saw, 7,300 hrs	POR
2012 Tigercat L870C, Tigercat 5702 350 rotation saw, 11,000 hrs, good cond	\$180,000
1997 Madill 3200B, w/29" Rotosaw, recent complete rebuild	\$75,000
2013 Cat 522B, w/Cat 23" hot saw, good uc, tight machine, recent motor & new pump, 9,200 hrs	\$250,000
2006 Prentice 1190T, w/Quadco 22" 360 rotation, Cummins power, new u/c, 6500 hrs	\$119,000
2016 JD 909MH, w/SouthStar FD 750 felling saw, 3,400 hrs, xlent machine	\$455,000
2016 JD 859M, w/JD 22" saw, 5,100 hrs, very nice cond	\$320,000
2011 Valmet 450 FXL, w/Quadco 22" 360 rotate head, new u/c, good pins & bushings & new pumps, 11,000 hrs	\$210,000
2001 Timbco 445D, w/Quadco 22" saw, rblt Cummins, pumps, drive motors and recent u/c, 12,500 hrs	\$77,500
1994 Timbco 425, w/24" bar saw, 5,000 hrs on motor & pumps, good uc	\$37,500
Cat 2440 Hot Saw, 24" saw, 40 degree tilt, new bearing	\$12,500

SKIDDERS & DOZERS & GRADERS

2010 JD 748H, bunching grapple, dual fcn boom, rears 90%, front 30%, 1 set chains, 6000 hrs	\$95,000
2010 Cat 545C, w/dual fcn boom, w/chains, good rubber	\$75,000
2001 Cat 535B, w/dual fcn boom, w/chains	\$32,500
2000 Cat 527, w/Esco swing boom, 7 roller, AC, rblt motor & torque, nice track skidder	\$149,500
1997 Cat D4H TSK, w/swing boom, new uc	\$75,000
Cat D6D, w/winch, angle dozer, 90% UC	\$35,000
1990 Case 1450B, good uc, winch, w/arch 7000 hrs, nice dozer	\$35,000

YARDERS & SWING YARDERS

Washington 78SL, 3 guyline, rblt Detroit 6V71T power, good u/c, nice cond, run all logging systems	\$107,000
1982 Washington 118, Major rebuild last year, new 8V92, air & hyd systems, New wheeler single lever controls	\$275,000
Diamond D210, rblt Cummins, low hrs on trans, new bearings in drum set, boom & gantry, good lines	\$290,000
2006 Link-Belt 290X2, w/two HL-25 Pullmaster winches, w/tong tosser & grapple, 16,500 hrs	POR
1993 Cat 330A, w/two HL-25 Pullmaster winches & grapple	\$135,000
Skagit 737, trl mount, Cummins 855, rblt heavy duty 7 guyline tube, Boman 7900 avl., Xlent cond	\$200,000
Madill 071, Detroit 8V92T, water on all drums, 4 guyline, good lines, nice yarder	\$110,000
T-Bird TTY 70, Detroit 60 Series, Allison CTL60614 trans, 4 jacks, 24' frame, line load meter, good lines, xlent	POR
T-Bird TTY 70, Cummins power, recent rblt, good lines	\$475,000
T-Bird TSY 255, Cat power, extlent cond	\$520,000
T-Bird TSY 255, Detroit 8V92T, c/w msp, good u/c, very good cond	POR
T-Bird TSY 6140, Cat power, 50' boom, very good cond	POR
T-Bird TSY 50, Detroit 8V71T power, good cond	POR
T-Bird TMY 50, Detroit 8V92T, good lines, nice yarder	\$320,000

CARRIAGES

2011 Boman 7500, 2,600 hrs	\$50,000
Boman 9500, Just rebuilt	\$40,000



As We See It...

Loggers Working for Loggers

by Danny Dructor

About once a year we like to remind loggers and log haulers why they should, if not already, be involved with a State and/or Regional Association representing loggers and log haulers. Perhaps the biggest reason is the question, "if loggers are not representing the best interests of the timber harvesting profession, then who is?"

When you step back and look at some of the benefits that both State and Regional Associations have worked on covering both the political and working landscapes, you can't help but wonder where our industry might be if you did not have these organizations out there working for you.

Let's start with an issue that brought many of our associations together, worker's compensation insurance. Many state associations have successfully petitioned their state insurance boards to create a tiered structure for logging insurance rates based on

mechanized versus non-mechanized jobs.

Let's talk about truck weights, many state and regional associations have been able to see an increase in gross truck weights on State and County roads as a direct result of having their associations lobby their respective legislative bodies to allow tolerances over and above the 80,000 pound gross weight limit found on the Interstate Highway System, simply because we are hauling an agriculture commodity that is subject to many variances in weight, both physical and weather related.

Let's talk about taxes. There are many states that have exempted timber harvesting equipment from ad valorem taxes and either reduced or completely eliminated sales tax on logging equipment and parts being used in timber harvesting operations.

These are just a few examples, and there are other ideas that have been brought to the table in state and re-

gional logger organizations, saving millions of dollars for the logging sector through greater efficiencies and cost cutting measures.

With all of the regulations that are currently burdening the industry, it is good to know that you have an association working for you that can keep you up to date on changes that can save your business from unwanted fines and penalties for non-compliance.

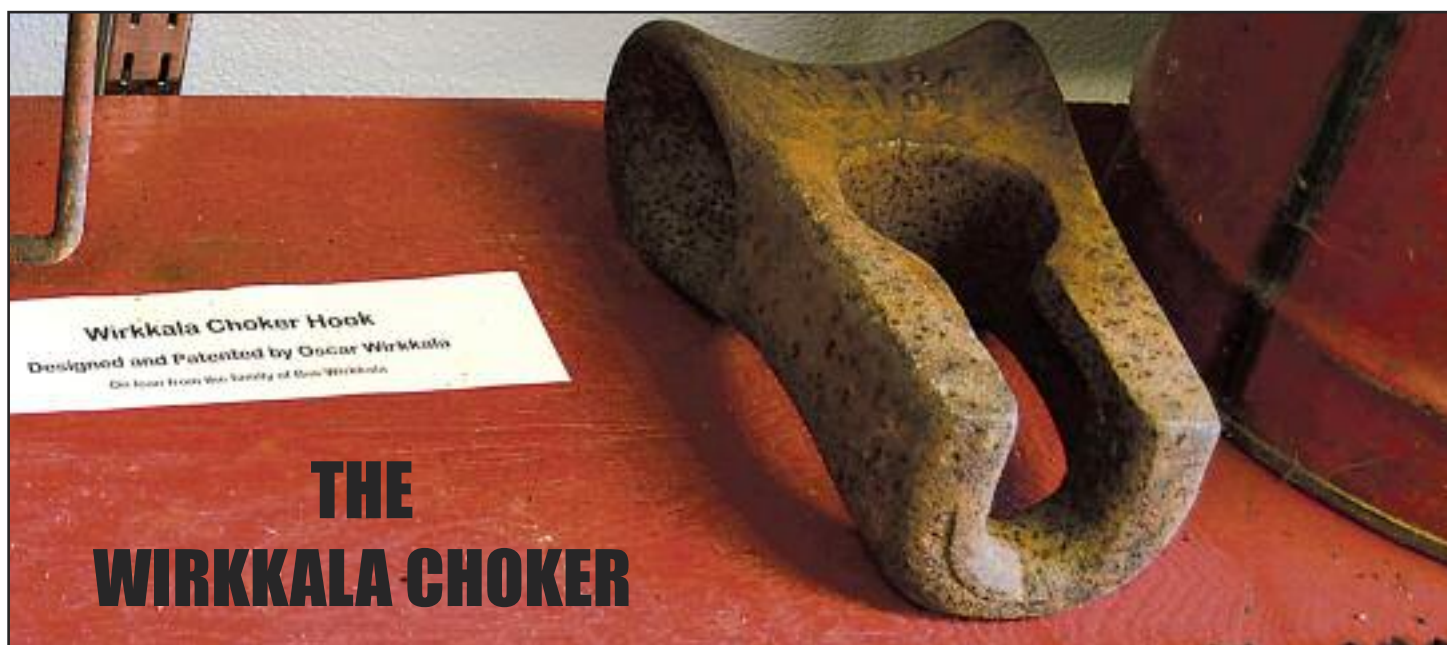
If you are reading this and not supporting your local state and/or regional organization, then you need to realize that the efforts of those that are is probably one of the reasons that you are still in the business. While it is preferable to be an active member of an organization, your donation through membership dues will go a long way in supporting the organization that is out there supporting you and your livelihood.

The American Loggers Council is the National Asso-

ciation of State and Regional logging associations. We will continue to bring the logger's voice to Washington, DC, but we need healthy State and Regional logging associations that can participate with us to make that happen. If you are not already, please consider supporting your state associations, it is an investment in your future, and ours. We are "Loggers Working for Loggers."

Danny Dructor is the Executive Vice President for the American Loggers Council with offices near Hemphill, Texas.

The American Loggers Council is a 501 (c)(6) not for profit trade organization representing professional timber harvesters in 33 states across the United States. If you would like to learn more about the ALC, please visit their web site at www.amloggers.com, or contact their office at 409-625-0206.

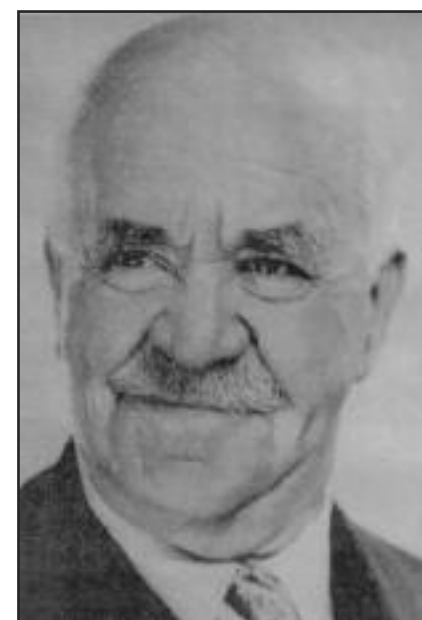


THE WIRKKALA CHOKER

Oscar Wirkkala (1850 - 1959) was a logger and inventor. Born in Finland in October 1880, he spent the entirety of his life on a quest of practical, creative knowledge. During his lifetime, he was issued over 40 patents on high lead systems, bull hooks, choker hooks, cable knobs - he even designed a marine propeller. Over the years, Oscar spent many

hours making drawings and improvements of bull hooks, carving the models out of rutagabas. The above picture is one of his chokers that is on display at the Appelo Archive Center in Naselle, WA.

(This information is excerpted from text accompanying the display at Appelo Archive Center)



Oscar Wirkkala
Logger & Inventor
Holder of over 40 patents



Summary Judgment....

Taos, New Mexico Remembers the Bataan Death March

by William Perry Pendley

Last month, Albuquerque resident, Ralph Rodriguez, Jr., died. One of the last "Battling Bastards of Bataan" survivors of a death march through the Philippines jungle, methodical malnutrition, and sadistic torture by Japanese in World War II, he was 100. In northern New Mexico's high desert, bounded by the Sangre de Cristo Mountains, in the Town of Taos, is a memorial to him and men with whom he served, including those whose remains were never recovered. Its cross drew the ire of a deep-pocketed, anti-religion group, but help is on the way if the Supreme Court of the United States grants a petition filed last week.

On December 8, 1941,

hours after the surprise attack on Pearl Harbor, Japanese forces invaded the Philippines, which were defended by the 515th Coastal Artillery Regiment, 200th Coastal Artillery Regiment, 192nd Tank Battalion, 194th Tank Battalion, and regular, national, and commonwealth groups of the Philippine Army. The 515th and 200th were New Mexicans sent to the Philippines because most spoke fluent Spanish. They fought bravely but Japanese forces quickly overwhelmed them. On April 9, 1942, they surrendered.

Immediately, the Japanese sent survivors on the "Bataan Death March" to prison camps 65 miles away. Prisoners received little food or water and

were tortured frequently. Those who could not keep up, or angered their captors, were summarily executed. The New Mexicans were singled out because the Japanese could not distinguish those of Mexican descent from the Filipinos, so they beat them brutally in frustration. A Filipino division of 350 was rounded up and every man beheaded! Of the estimated 80,000 who began the march, only 54,000 reached its end.

In the prison camps, the horrors continued. Prisoners died of malnutrition (their diet was Whistle Weed soup and watery, maggot-infested rice), disease (dengue fever, beriberi, dysentery, malaria, typhus, and typhoid fever ravaged the men), or "subhuman treatment," in the words of Sgt. Rodriguez. The rest were used as slave labor until the war ended in 1945. Of the 1,816 New Mexicans who reached the Philippines, only 987 returned home.

New Mexican War Mothers, using private donations—the Town of Taos did no fundraising, planning, de-

signing, or building—erected a memorial in Taos's plaza to honor their loved ones. The Memorial contains a brass plaque with the names of New Mexicans who died on the Bataan Death March and other Taos citizens who were killed in World War II, a sculpture of soldiers sustaining each other during the march, and the flags of the United States and New Mexico. A central feature is a Latin cross, below which the plaque with the soldiers' names is affixed.

Last year, Wisconsin-based Freedom from Religion Foundation wrote the Town of Taos demanding that it move the Memorial to a "more appropriate private location" or defend a federal lawsuit because the Memorial's cross purportedly violates the Establishment Clause. Across the country, another memorial—honoring 49 Prince George's County, Maryland soldiers who died in World War I—is under attack by yet another radical group. A

(Continued on Page 22
See "Summary Judgement.."



**CAT
928G
930G
924G
938F
Parting
Out**



CAT D6C Parting Out



**Clean 359 Peterbilt, short
hood, Cummins, 13 spd. \$13,800**



**Rebuilt
CAT
3046**



**CAT D342
High HP.
rebuilt
Call**



**D4H
CAT
6k Hrs.,
ripper
\$39,500**



**Denharco DM 3500
Thunderbird 736D
Parting Out**



**DUKES
PARTS & EQUIPMENT
509-952-9223**

2015 S. 18th ST, Union Gap Wa. 98903 Shop: 509-469-9420
Check us out online: www.dukesheavyequipment.com



**ROTHENBUHLER
ENGINEERING**

HOME OF THE *Talkie Tooter*

MARK III WHISTLE CONTROL
now in the 72 MHz band, get away from
congested frequencies with a proven design



CARRIAGE CONTROLS
rugged radios that can control most
manufacturer's carriage from the ground or
the yarder

**Rugged, Durable,
Industrial Radio
Equipment since 1946!**

P.O. Box 708, 524 Rhodes Rd
Sedro-Woolley, WA 98284-0708
Telephone 360-856-0836
www.talkietooter.com

(Continued from Page 21)

Maryland federal district court rejected the challenge but the U.S. Court of Appeals for the Fourth Circuit, ruling 2-1, reversed. Defenders of the memorial sought en banc review, which was denied over a passionate dissent. Last

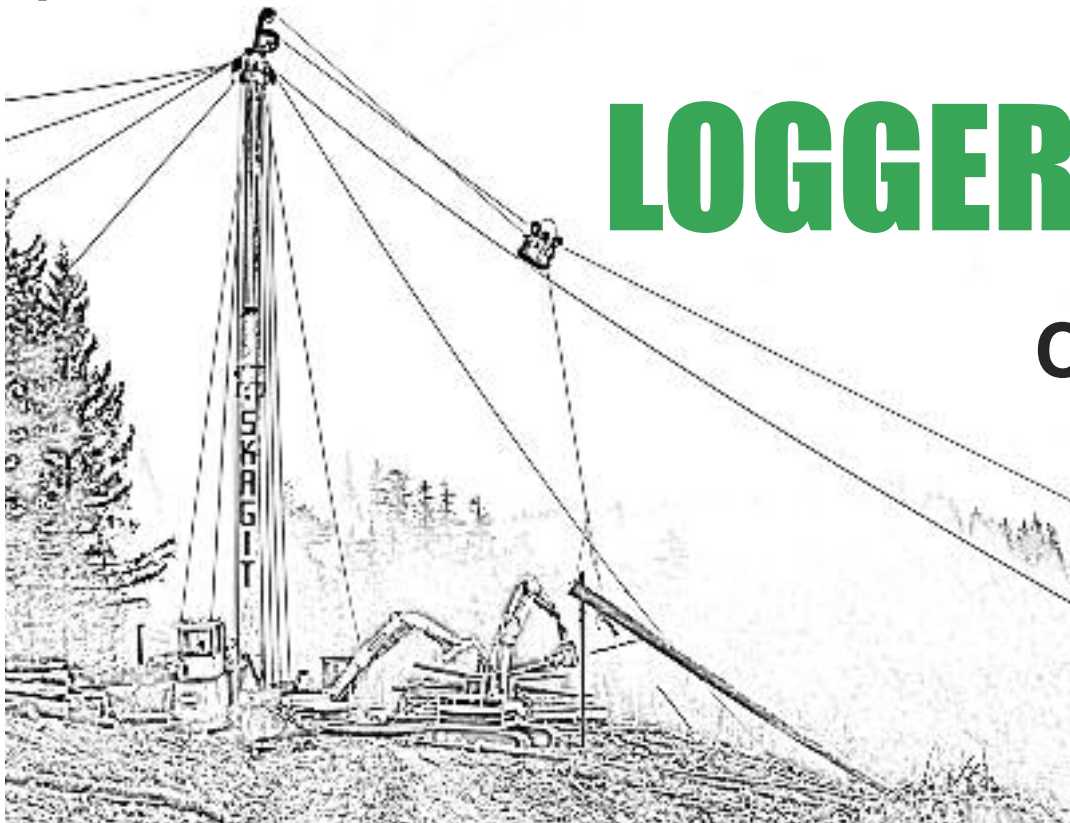
week, the defenders petitioned the Supreme Court for review.

The Town of Taos, represented by Mountain States Legal Foundation, will urge that the Court grant the Maryland petition, reverse the Fourth Circuit, and hold that crosses at war memorials do not violate the Constitution. The

Supreme Court's jurisprudence on the Establishment Clause is badly muddled and would be unrecognizable to the Founders. It must be rectified. Perhaps a brief from a small mountain town in the West will help the justices understand what is at stake and honor Sgt. Rodriguez and the men of the 515th and 200th

with whom he served bravely in a faraway land in defense of their country.

Mr. Pendley, a Wyoming attorney, is President and Chief Legal Officer of Mountain States Legal Foundation and a regular columnist in Loggers World.



LOGGERSWORLD.COM

CHECK US OUT ONLINE!

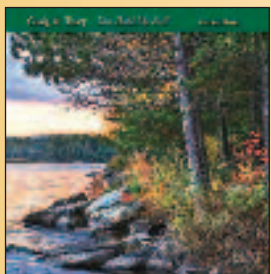
Where you can buy a subscription,
place a Show and Sell ad
look at back issues
send us a message
and much more!

Logging Music Recently Re-Released and Re-Mastered!



Endangered Species **\$15.00**
Plus \$5.50 Shipping

"Endangered Species" - In 1989 Craig & Terry went back into the studio to record their next album. Craig wanted to share his point of view through music which addressed some of the political issues facing the logging industry at that time.



You Hold Me Still **\$15.00**
Plus \$5.50 Shipping

"You Hold Me Still" - In 1992 after many requests to record a gospel album they again returned to the studio and recorded eleven original songs. Two of the songs are co-written - one with Don Beck and one with Rick Barrows.



Songs from the Siuslaw **\$20.00**
A Double Album! Plus \$5.50 Shipping

"Songs from the Siuslaw" (pronounced SY-u-slaw) is a heartfelt tribute to the hard working men & women in the logging industry and dedicated to the many men who have lost their lives doing one of the most dangerous and unappreciated jobs in the world. This a double CD set that was recorded live in Florence, Oregon in 1999 at the Florence Events Center. The first CD is saw-shaped and will play in top-loading and tray-loading CD players ONLY. It comes with a 20-page booklet- filled with humorous lyrics and old logging photos.

Order on their website for fastest service:

www.ctmusicoregon.com

Or if you prefer not to order on-line you can call them at: 541-268-6910



The Snag Fallers Ball **\$15.00**
Plus \$5.50 Shipping

"The Snag Fallers Ball" - A light hearted collection of original songs about logging in Oregon and Alaska, and was first released in 1988. Craig wrote nine of the eleven songs on the album and co-authored two others with Don Beck, a long time friend, logger and musician also from the small town of Mapleton, Oregon.



Special Deal!

ALL 3 CD'S **\$40.00**

Snag Fallers Ball, Endangered Species
& You Hold Me Still

Plus \$5.50 Shipping



SUPER Special Deal!

ALL 5 CD'S **\$60.00**

Snag Fallers Ball, Endangered Species
& You Hold Me Still

Plus \$6.50 Shipping



PLUS

Songs from the Siuslaw (double album)



**Please send me
the items
I have checked!**

Send your check or Money order to:

CT MUSIC OREGON
86399 SWEET CREEK RD,
MAPLETON, OREGON 97453

NAME:

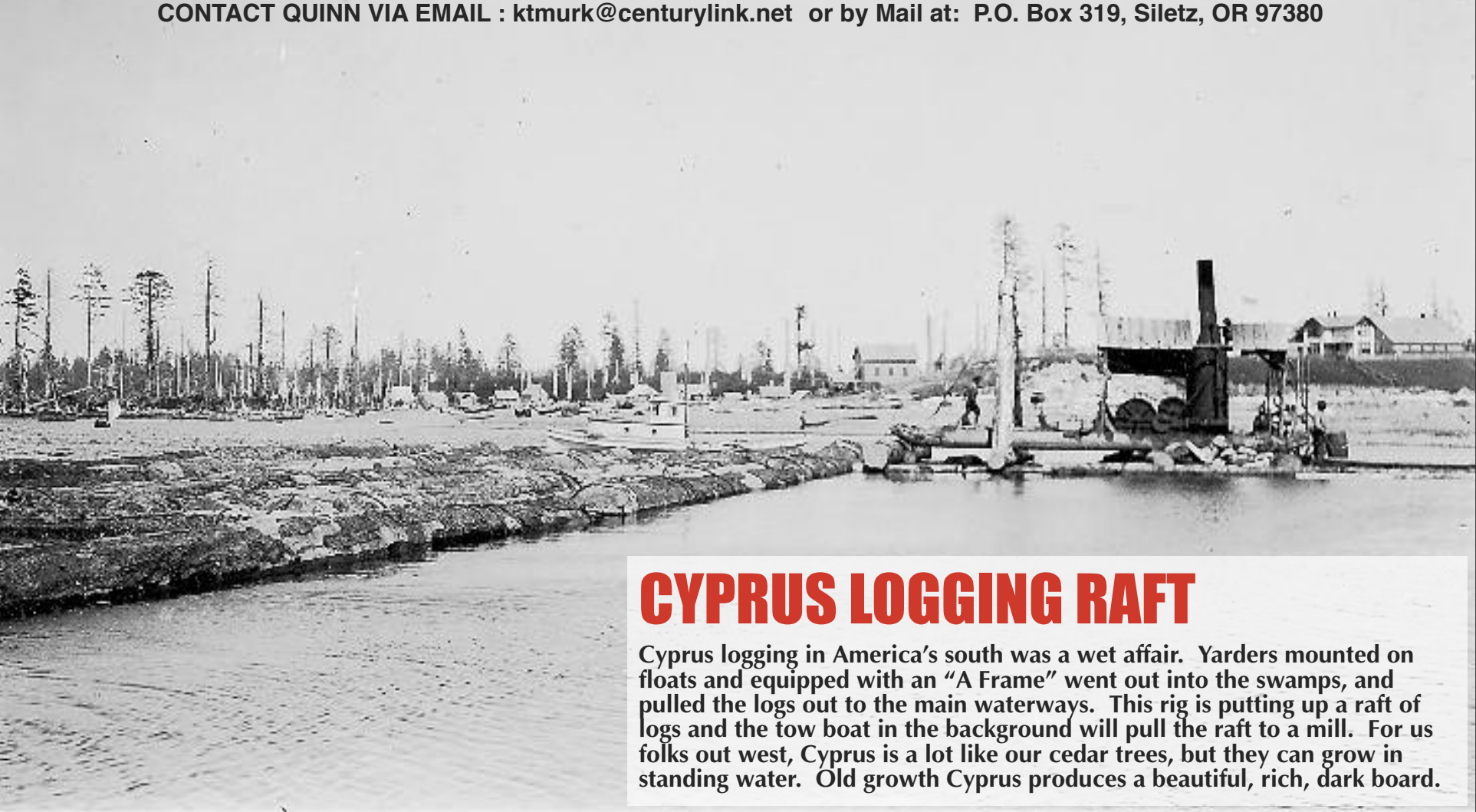
ADDRESS:

CITY: STATE: ZIP:

PHONE: (.....)

(ALLOW 3 WEEKS FOR DELIVERY)

CONTACT QUINN VIA EMAIL : ktmurk@centurylink.net or by Mail at: P.O. Box 319, Siletz, OR 97380



CYPRUS LOGGING RAFT

Cyprus logging in America’s south was a wet affair. Yarders mounted on floats and equipped with an “A Frame” went out into the swamps, and pulled the logs out to the main waterways. This rig is putting up a raft of logs and the tow boat in the background will pull the raft to a mill. For us folks out west, Cyprus is a lot like our cedar trees, but they can grow in standing water. Old growth Cyprus produces a beautiful, rich, dark board.

LOGGERS WORLD AUGUST 2018

LOGGERS WORLD Suspenders are Back!!



Show the world that you support
LOGGERS WORLD MAGAZINE
by wearing *Loggers World Suspenders*

Loggers World Suspenders are now available in traditional red (2” wide) with black lettering. You can order them with leather ends or clips and we also have the buttons. Just use the handy form below.

Only
\$18.50
per pair

(Washington Residents pay
\$20 including Sales Tax)
Plus \$7.50 shipping & handling



Name _____ Phone _____

Mailing Address _____ City _____ State _____ Zip _____

#__46” Leather	#__46” Clip	#__ @ \$18.50 = \$_____
#__50” Leather	#__50” Clip	WA Sales Tax #__ @ \$1.50 = \$_____
#__54” Leather	#__54” Clip	S & H @ \$7.50 (\$13.00/ 2 or more pr.) = \$_____
Bucksaw Buttons - \$3.00 per package of 8		_____ Buttons @ \$3.00 = \$_____

Total \$ _____

**Send your check
or Money order to:**
LOGGERS WORLD LLC
P. O. Box 1631
CHEHALIS, WA 98532
Credit card sales call:
800-462-8283
**Offer expires
December 31, 2018**

(Continued from Page 7)

If you can do these things then the next step is to figure out how to get each item of what you want. Many of these wants will be tangible material things and many of them will be intangible things that are the result of learning, loving, relating or acting to bring about a change in the inner person.

After planning out these steps, considering the obstacles in the

After you have figured out the answer to what it is worth then you can take the next step and that is deciding whether to go ahead on the goal or whether to wait till later until conditions and circumstances become more favorable or whether to abandon it altogether.

Most of us realize that just gathering up a big pile of materi-

For conviction of how well goal setting, planning and evaluating the goal works set yourself a two week goal. Write down the goal. Make a plan for its achievement and then go ahead for 2 weeks and see how it works.

Take a card, that you can carry in your pocket. On one side of that card write down the goal. Then write below that the things you must do in order to make

Then every day, take the time to read that card before every meal. Then every day write down the progress you have made, the change in plans that are called for and a report of what is happening.

PLAN - REVIEW - RECORD!



TOLL FREE: 1-800-462-8283

RATES: Space available at \$25.00 per column inch. Each ad is separately boxed for prominent display of your machinery or message.



DEADLINES: by mail, 5th of month prior to publication.
Phone your order toll free 8:30-5:00 p.m. Monday-Friday Pacific Time.
Use your VISA or MasterCard Cards



800-644-1182

khodgins@prolenc.com

nc

888-280-9900

[illegible]

CROWLEY EQUIPMENT, INC.

(541) 688-5924 FAX: (541) 688-0704

MIKE (541) 954-7643 • ERIC (541) 206-2252 • DAN (541) 914-9222

4655 Cloudburst Way, Eugene, Oregon 97402



2015 John Deere 2454D Log Loader,
W/Pierce GP head, 5,000 Hrs.,
P.O.R.



2016 Deere 909MH
w/Southstar Felling Head,
3,400 hours
P.O.R.



1996 Diamond D210
\$250,000



1995 Thunderbird TSY255
Tilt Cab, Cat Engine, Lohmann Finals Eagle Carraige, Radios.
Trades Welcome!

LOG LOADERS

- 2015 CAT 320D
- 2013 CAT 320D
- (2) 2012 CAT 320D'S
- 2013 HITACHI ZX240
- 2016 DEERE 2954D
- 2016 JOHN DEERE 2154D
- 2015 JOHN DEERE 2454D
- 2014 JOHN DEERE 3754D
- 2010 JOHN DEERE 2954D
- 2008 DEERE 2554
- 2008 JOHN DEERE 2054
- 2007 DEERE 3554
- 2004 DEERE 3554
- 2004 JOHN DEERE 2054
- 1993 JOHN DEERE 690E
- 2011 KOBELCO SK295
- 2006 KOBELCO SK210
- 2015 LINKBELT 210X2
- 2015 LINKBELT 240X2
- (2) 2013 LINKBELT 240X2
- 2005 LINKBELT 240LX W/JEWELL TONG THROWER
- 1997 LINKBELT 4300Q W/(2) PULLMASTER DRUMS
- 1996 THUNDERBIRD 1240
- 2017 TIGERCAT 880D
- 2016 TIGERCAT LS855D W/GRAPPLE SAW
- 2015 TIGERCAT LS855C

PROCESSORS & DELIMBERS

- 2012 CAT 532 W/WARATAH 623C
- 2012 CAT 532 W/WARATAH 623C
- 2016 DEERE 2954DW/SOUTHSTAR QS605 GRAPPLE PROCESSOR
- 2015 JOHN DEERE 2454D W/PIERCE GP HEAD
- 2013 JOHN DEERE 2154 W/WARATAH 622C
- 2008 JOHN DEERE 2954D W/2010 WARATAH 624C
- 2008 JOHN DEERE 2054 W/622B
- 2007 JOHN DEERE 2554 W/PIERCE 3348
- 2006 JOHN DEERE 2554 W/DM4550

PROCESSORS & DELIMBERS Cont.

- 2003 DEERE 370 W/WARATAH 626
- 2002 JOHN DEERE 230LC W/DM4400
- 1990 JOHN DEERE 290 W/FABTEK
- 2005 KOBELCO SK250LC RB W/WARATAH 622B
- 2012 LINKBELT 290X2 W/DM4550
- 2004 LINKBELT 240LX W/PIERCE 3348
- 2003 LINKBELT 240LX W/DM4400
- 1997 LINKBELT 3400Q WDM3500
- 2003 TIGERCAT L830 W/2011 WARATAH 622B

FELLER BUNCHERS

- 2016 CAT 552
- 2016 DEERE 909MH W/SOUTHSTAR FELLING HEAD
- 2015 JOHN DEERE 959K
- 2015 JOHN DEERE 643L
- 2009 TIGERCAT LX830C
- 2005 TIGERCAT L870
- 2005 TIGERCAT LX830
- 2010 TIMBCO 445FXL
- 2007 TIMBCO T445EXL
- 2006 TIMBCO T425EXL
- 2003 TIMBCO T445E
- 2011 TIMBERPRO TL735B W/BARS AW
- 2011 VALMET 450FXL

SKIDDERS / DOZERS

- 2017 CAT 545D
- 2010 CAT 525C
- 2003 CAT 527
- 1995 CAT D5H W/GRAPPLE
- 1990 CAT D8N W/RIPPERS
- 1990 CAT D5H GRAPPLE, WINCH
- CAT D7F W/ESCO SWING BOOM
- CAT 977L
- 2010 JOHN DEERE 848H
- 2005 JOHN DEERE 748G3

SKIDDERS / DOZERS Cont.

- 2003 JOHN DEERE 648G3 W/SWING BOOM
- 1988 J D 550G W/RIPPERS
- JOHN DEERE 850 W/WINCH
- TIMBERJACK 380B

CHIPPERS / GRINDERS

- MORBARK 30RXL
- 1995 PETERSON 5000G

YARDERS

- CHRISTY HD YARDER
- DIAMOND D210
- KOLLER K702 ON TRACKS
- (2) KOLLER K602'S
- KOHLER K501
- (2) MADILL 071
- MADILL 70'
- (2) SKAGIT 739
- SKAGIT 737
- (2) THUNDERBIRD 6140
- THUNDERBIRD TMY50
- THUNDERBIRD TSY-6240
- THUNDERBIRD TSY255
- THUNDERBIRD TY90
- THUNDERBIRD TY-40
- 1995 THUNDERBIRD TTY70

EXCAVATORS

- 2005 CAT 312CL
- 2012 HITACHI 290
- 1996 HITACHI EX270
- 2014 JOHN DEERE 2454D RB
- 2006 LINKBELT 370LX RB

MISCELLANEOUS

- 2012 CAT 924K
- 2007 CAT 140H
- CAT 977L
- 1982 CAT 120G
- EXC. HEEL/GRAPPLE
- 2006 KOMATSU WA450 -L5
- MEDFORD LOG FORKS
- 2012 PIERCE GP HEAD
- 2001 TIMBERPRO TF820E
- 2007 WARATAH 624

PARTING OUT

- 2005 HITACHI ZX250 LL
- LINKBELT 210LX BOOM
- THUNDERBIRD TSY-155



2016 John Deere 2154D,
3,300 Hours
\$205,000



2016 Deere 2954D Log Loader
w/4,233 hours
P.O.R.



2015 Link-Belt 240X2 Log Loader
w/3,092 hours
P.O.R.



2015 Linkbelt 210X2 Log Loader
w/4,839 hours
P.O.R.

www.crowleyequipment.com



2005 John Deere 748G3,
7,500 Hrs.
\$80,000



2017 Tigercat 880D
700 Hours
P.O.R.



1990 Cat D5H,
Grapple, Winch
P.O.R.



2009 Tigercat LX830C
Newer Undercarriage, 9,664 Hrs.
P.O.R.



(2) 2012 Cat 320D Log Loaders
P.O.R.

SHOW AND SELL

Send your Black and White or Color photo and a description of what you are selling (try to keep it within 20 words - 1 item per ad - No Business Names Allowed) and we'll publish it in Show & Sell for just \$125.00. Mail (or email to logworld@aol.com) your information to Loggers World LLC, P.O. Box 1631, Chehalis, WA 98532. Deadline is 5th of the month preceeding publication.



Rebuilt Quadco
22B 360VI S/N 827
Can be 24" Cut,
All cyls rebuilt, 500
hrs on New disc &
support plate, New
Teeth. New Butt
Plate, New Brgs &
seals in Drive Shaft,
new Brgs in Rotate
pinions. Any cracks
gouged & welded.
Call Kevin
250-565-5222

N



1993 KW Logger/Lowboy, 3406C, 18-spd.,
Eaton 2-spd, double frame, wet kit, Vulcan,
80% tires 541-865-3312

N

ADVERTISE

YOUR ITEM IN THIS SPACE

\$125⁰⁰

CALL 1-800-462-8283

SPECIAL DEAL:

Get your ad for
\$110⁰⁰ if you buy it
on our website:

www.loggersworld.com



Kobelco Bladerunner Ed150, 2007, 2,200
hrs, bucket thumb coupler blade \$70,000
Call Shane 530-945-1586

N

ADVERTISE

YOUR ITEM IN THIS SPACE

\$125⁰⁰

CALL 1-800-462-8283

SPECIAL DEAL:

Get your ad for
\$110⁰⁰ if you buy it
on our website:

www.loggersworld.com



966E, Medford log forks or bucket, new tires,
1989, very nice \$69,500
Call Shane 530-945-1586

N



2011 T-800 /with burner, new C-15 Cat, 18
speed, hd rears/lockers/jake retarder, rebuilt
2006 Whit-Log gear \$65,000
Call Shane 530-945-1586

N



2007 648H, dual arch , 17,000hrs, very clean
and working daily, new motor at dealer and
other work \$55,000
Call Shane 530-945-1586

N

ADVERTISE

YOUR ITEM IN THIS SPACE

\$125⁰⁰

CALL 1-800-462-8283

SPECIAL DEAL:

Get your ad for
\$110⁰⁰ if you buy it
on our website:

www.loggersworld.com

ADVERTISE

YOUR ITEM IN THIS SPACE

\$125⁰⁰

CALL 1-800-462-8283

SPECIAL DEAL:

Get your ad for
\$110⁰⁰ if you buy it
on our website:

www.loggersworld.com



1979 D7G -92V7452, new Cat eng from Cat ,
70% u/c, strattle grapple and winch, semi u
blade, beautiful Cat \$72,500 great history
Call Shane 530-945-1586

N



525C Cat Skidder, winch, grapple, 2008,
14,352 hrs \$45,000
Call Shane 530-945-1586

N

SHOW AND SELL

Send your Black and White or Color photo and a description of what you are selling (try to keep it within 20 words - 1 item per ad - *No Business Names Allowed*) and we'll publish it in Show & Sell for just \$125.00. Mail (or email to logworld@aol.com) your information to Loggers World LLC, P.O. Box 1631, Chehalis, WA 98532. Deadline is 5th of the month preceeding publication.

27

LOGGERS WORLD AUGUST 2018

6140 Thunderbird
Swing Yarder,
all lines & rigging,
whistles, new gear
and bearings 18 mos
ago, Super Eaglet
Carriage ~~\$332,000~~
New Years
Special
\$312,000
(360) 470-1535



2013 325D Log Loader, 10,230 hrs, very clean
\$189,400 ready to work
Call Shane 530-945-1586



2004 Peterbilt 378B Air Trac, 1 owner, Cat
C15, 535 HP, Lincoln Trailer and Gear and so
much more. Very well kept truck \$75,000 OBO
360-749-3530



2005 320C, Pierce PTD2856, forestry cab, cat
walks, 16,000 hrs, tons of repairs, ready to go
straight to the job \$70,000 great history
Call Shane 530-945-1586

ADVERTISE

YOUR ITEM IN THIS SPACE

\$125⁰⁰

CALL 1-800-462-8283

SPECIAL DEAL:

Get your ad for

\$110⁰⁰ if you buy it
on our website:

www.loggersworld.com



Quadco 2800 Saw Assembly, Complete -
Swing Arm, Cylinder, Motor, Valving,
Eccentric Saw, 12 tooth Ring like 2900. \$6500.
Call Kevin 250-565-5222

ADVERTISE

YOUR ITEM IN THIS SPACE

\$125⁰⁰

CALL 1-800-462-8283

SPECIAL DEAL:

Get your ad for

\$110⁰⁰ if you buy it
on our website:

www.loggersworld.com



2000 Rottne SMV 16 ton log
forwarder, 18,500 hrs. John deere motor and
hydraulic pump new at 17,000 hrs. 3 new tires
rest 60% or better. 1 set Eco tracks, spare
tire, parts book. \$52,000. Call 1-250-558-8515



Timbco 445EXL, 2006, 10,564 hrs, quadco 360
\$155,000 resealed pumps, and control valve,
just coming out of the shop.
Call Shane 530-945-1586

ADVERTISE

YOUR ITEM IN THIS SPACE

\$125⁰⁰

CALL 1-800-462-8283

SPECIAL DEAL:

Get your ad for

\$110⁰⁰ if you buy it
on our website:

www.loggersworld.com



Quadco 360VI Rotator, Complete Rotator,
800cc motors with hoses and valve blocks, full
guarding. Convert your 40 tilt or ?? \$9500.
Call Kevin 250-563-8899

ADVERTISE

YOUR ITEM IN THIS SPACE

\$125⁰⁰

CALL 1-800-462-8283

SPECIAL DEAL:

Get your ad for

\$110⁰⁰ if you buy it
on our website:

www.loggersworld.com

BLAST FROM THE PAST

BY QUINN J. MURK FOR LOGGERS WORLD



THE LOGGING WAGON

In the mid 1800's and up into the early era of motor trucks, the logging wagon (or truck, as it was also called) provided over-land transportation for logs. Having all same-sized wheels with a broad iron tire, these tough, heavy-duty rigs provided a rather efficient method of transportation for the times. Mule power was also quite popular, as pound for pound a mule will out pull a horse, and mules don't do dumb things like horses will. One will note that this setup is being pulled by a 5-mule team, three in front and two in back, which is somewhat unusual.

USED PARTS FOR

CONSTRUCTION & LOGGING MACHINERY

Crawlers, Loaders, Trenchers, Excavators,
Backhoes, Skidders, Skid-Steers,
Engines and Transmissions

"Rely on our Experience - Est. 1967"



1-800-626-6046

**Schaefer
Enterprises**

4535 St. Rt. 3 N. • P. O. Box 136, Wolf Lake, IL
www.sewlparts.com - parts@sewlparts.com

Most Major Credit Cards Accepted

Come see the latest technology at the **8th ANNUAL**

LIVE IN-WOODS SHOW

September 13-15, 2018
OSU Research Forest
Corvallis, Oregon

For more information
call 360.832.1745
or visit our website at
www.pacificloggingcongress.org



COMING EVENTS

AUGUST

5



**VERNONIA FRIENDSHIP
JAMBOREE
& LOGGING SHOW**
VERNONIA, OREGON
FOR INFORMATION:
mplogging@frontier.com

9-12



MORTON LOGGERS JUBILEE
JUBILEE ARENA
MORTON, WASHINGTON
FOR INFORMATION: (360) 523-4049

24-25



BROOKS TRUCK SHOW
PACIFIC NW TRUCK MUSEUM
BROOKS, OREGON
FOR INFORMATION: (503) 930-7296

SEPTEMBER

1-2



**HIGH COUNTRY LOG
SHOW**
RUNJE FIELD
ROSLYN, WASHINGTON
FOR INFORMATION: (509) 260-0403

15

SAGINAW DAYS LOGGER'S SHOW
BROOKLYN, WASHINGTON
FOR INFORMATION: (360) 532-5846 OR 253-232-2503

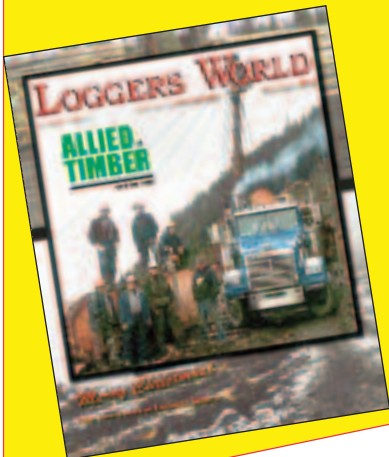
SEND EVENT NOTICES TO: Publisher, Loggers World Magazine, P. O. Box 1631, Chehalis, WA 98532-8425. Please include your event's symbol. Items used at discretion of the publisher.
Deadline for September 2018 issue: AUGUST 8th

Advertiser's Index

ACME MANUFACTURING16	LOGGERS WORLD IRONMART24
APPELO ARCHIVE CENTER.....17	LOGGERS WORLD SUBSCRIPTION30
BUSINESS EQUIPMENT LOANS.....8	MADSEN'S SHOP & SUPPLY, INC.....6
CASCADE TRADER5	MPI EQUIPMENT9
CASHMAN EQUIPMENT3	N. C. MACHINERY Co3
CATERPILLAR3	NORTH AMERICA SUPPLY18
CC HEAVY EQUIPMENT INC.7	OLIVER HAMMER CLOTHES SHOP.....7
COWLITZ RIVER RIGGING14	PACIFIC FIBRE PRODUCTS, INC.7
CROWLEY EQUIPMENT INC25	PACIFIC LOGGING CONGRESS.....28
CT MUSIC.....22	PERSONS ENTERPRISES ..22
DUKE'S EQUIPMENT21	PETERSON3
EAGLE CARRIAGE & MACHINE INC.....8	PIERCE PACIFIC MFG., INC.17
FEENAUGHTY MACHINERY Co15	ROTHENBUHLER ENGINEERING.....21
FRALEY TRACTOR, INC ..10	SCHAEFER ENTERPRISES 28
FULL CIRCLE FINANCE....6	SHOW & SELL.....22, 27
GEM.....11	THRESHOLD FINANCIAL..26
HIGH CASCADES AGENCY14	TRIAD MACHINERY.....13
HOLT OF CALIFORNIA.....3	WESTERN STATES3
IRELAND, INC.....15	ZENDER EQUIPMENT19
LOCK & LUBE.....13	

SUBSCRIBE TODAY! LOGGERS WORLD

*"The Logger's Magazine," is
concerned with what
concerns loggers*



12 Issues – 1 Year Subscription

\$25⁰⁰

**WA Residents pay \$27.40 w/tax
Inside U.S.A.**

Send your check or Money order to:

LOGGERS WORLD LLC
P. O. Box 1631
CHEHALIS, WA 98532



Offer expires
December 31, 2018

- ☐ \$25.00 for 1-Year Subscription ☐ \$50.00 for 2-Year Subscription
☐ \$100.00 for 4-Year Subscription

WASHINGTON RESIDENTS PAY \$27.40, \$54.80 OR \$109.60 w/SALES TAX

NAME:.....

ADDRESS:.....

CITY:..... STATE:..... ZIP:.....

PHONE: ().....

(ALLOW 5 WEEKS FOR DELIVERY OF FIRST ISSUE)