

LOGGERS WORLD

VOLUME 53 NUMBER 9

To Advertise Call: (800) 462-8283

SEPTEMBER 2018



BEKKEVAR

LOGGING & TRUCKING, INC
SEQUIM, WA



**GREAT LAKES LOGGING &
HEAVY EQUIPMENT EXPO**

SUNNYVIEW EXPO CENTER,
OSHKOSH, WI

Sept. 6-8



PACIFIC LOGGING CONGRESS
LIVE IN THE WOODS SHOW
CORVALLIS, OREGON

Sept. 13-15

LOGGERS WORLD LLC
P. O. Box 1631
CHEHALIS, WA 98532-8425

PRST STD
U.S. POSTAGE
PAID
PERMIT NO. 72
LEWISTON, ID



SURVIVAL OF THE TOUGHEST.

Introducing New Structural Warranty Terms for 600 Series and Felling Heads

We're so confident our heads can outlast the toughest conditions that we're standing behind our product now more than ever – with new Structural Warranty terms that cover 600 Series and felling heads for two years or 4,000 hours, whichever comes first.

Factory- and field-tested, each durable Waratah head is proven on our time to be profitable on yours. That means more harvesting, processing and felling from tough heads that don't quit, which are fully supported by the Waratah team.

- New two-year, 4,000-hour structural warranty on 600 Series and felling heads (from the date of purchase).
- 600 Series drive arms also covered under warranty terms.
- Durable heads for maximum performance and productivity.
- Factory- and field-testing for proven longevity.
- Backed by unparalleled Waratah support and a global dealers' network.

Talk to your local Waratah dealer today about the new two-year, 4,000-hour Structural Warranty terms for 600 Series and felling heads.

www.Waratah.com

Waratah Newnan, Georgia
770-692-0380

Waratah Kelso, Washington
360-636-2950

 **waratah**
BUILT TO WORK

558/558 LL FOREST MACHINE

MORE LOADS PER DAY

WITH SWING TORQUE AND HORSEPOWER TO SPARE

BUILT FOR IT.™

POWERFUL LOGGING SOLUTIONS



**KNUCKLEBOOM
LOADERS**



SKIDDERS



**FOREST
MACHINES**



**WHEEL FELLER
BUNCHERS**



**TRACK
HARVESTERS**



**TRACK FELLER
BUNCHERS**

Our goal is to help you move more loads at a lower cost. The all new 558/558 LL is redefining forestry machine performance, through improved power, efficiency, operator comfort and an optimized work tool system. Key features include:

- Increased engine horsepower and swing torque add power and boost performance under load
- Component layout, back-to-back main hydraulic control valves and engine speed control maximize efficiency
- Cooling capacity increased 33 percent for trouble-free operation
- New premium rear entry cab and side entry cab enhancements improve operator experience

Look to your Cat® dealer for financing and all the machines you need for sustainable harvesting and land management, forestry road construction, hauling and millyard. Total support from one source.

www.cat.com/forestry



www.cashmanequipment.com
Nevada and Eastern Sierra
800-937-2326



www.holtca.com
Central Northern California
800-452-5888



www.ncmachinery.com
Western and Central Washington
800.562.4735 and
Alaska 800.478.7000



www.petersoncat.com
Northern California, Western
Oregon and Southwestern
Washington
800-452-7676



www.westernstatescat.com
Idaho, Western Montana, Eastern
Washington, Eastern Oregon and
Northwest Wyoming
800-852-2287

Finley's Rigging Shack

"Classic"



Originally Printed in September 1982

WHAT DO YOU LIKE?

Some of the things you like to do are the same things I like to do. Such as petting a dog. Some of the things you like to do are things that I'd just as soon not do.

The key is in knowing what you like. To some men a wife and family are very important. Of high value to them. On top of the Priority List. To other men their freedom is of more value to them than being tied down with a wife and family. The examples stretch from here to you and there is no need to dredge up a lot of examples.

The question before the meeting is, "Do You Know What You Like?" Can you tell me what you like in order of importance? Have you written down a list?

Just as it is most difficult to take a trip until you have a destination it is hard to get what you like, what you want, until you know what it is --- in the order of importance.

Just as each business must have a bookkeeping system, in order to find out where the money went, each person should have a value system.

Charles 'Tremendous' Jones was one time telling a person what a great thing it is to be a Christian and to have a close relationship with Jesus Christ. This person shot back, "Charlie do you expect

every person to believe as you believe and to live as you live?"

Charlie said, "NO. No, not at all. But I do expect every person to know what he believes and to know why he is living as he is living."

I guess that is what we are talking about. To urge you to search and to question your own wants and desires. To think about what is important to you and to establish a system that will either get you what is important to you or at the very least bring you closer to your wants and desires.

Most of my life I've been telling and telling people they are better than they think they are. They can accomplish more than they think they can. All in all each person is a very unique and efficient being that is endowed with many outstanding abilities. One of the greatest abilities is the ability to reason and to make choices.

For every choice there is a cost or a consequence. A cost also goes with not making a choice. When one chooses to do nothing one has made a choice to do nothing. There is no escaping the consequences of making a choice.

We are goal oriented beings and the fact that we can want, can imagine, and can dream proves that point. Every person sets goals. Some are higher than others.

During the past year or so we have been deluged with stories of big companies going broke. Lots of

them. One conglomerate said they were going to hold a creditors meeting in a big stadium, they had over 100,000 creditors.

Now if this big conglomerate goes broke it is going to break some of those thousands of creditors. It is going to bend others and it is going to be a hardship on all of them.

Each one of these creditors made a choice to do business with the conglomerate and to trust them. This was a good choice for a long time. Now it is a bad choice because they are probably going to lose money. They made the one choice but they should have made another along this line and they didn't. It is going to cost. The consequences of making choices.

The conglomerate made a lot of good choices --- they had to in order to achieve their size and past success. They did not correctly anticipate what was coming and they did not make the proper choices and thus they will probably sink and take many others down with them.

The choices that worked in the sixties did not work in the seventies. That is true for many businesses and for many people. The choices that were wise in the 70's are not all that wise in the 80's.

The trick is to evaluate the conditions and to keep up to date on the methods. For instance one business person involved in selling books, that average \$3.00 a copy, has had a drastic drop in business. Another business person involved in high priced jewelry sales is doing great.

It is obvious what is going on here. The times are hard on the people who buy three dollar books. Times are great for people who buy \$50,000.00 necklaces.

There is a phrase used by busi-



FINLEY HAYS

nessmen that goes something like, "We are a goal oriented company." Which merely means, "We have objectives and plans for reaching those objectives."

Companies who could not change their plans are having trouble, some of them going broke. This is not a mistake in setting goals. It is a mistake

in the planning. Last Year's plan may not fit this year's conditions at all. Plans must be flexible which means they must be able to be changed.

For instance. In our own little business. We made some plans about 6 months ago, studied them over carefully, got all the information we could and then changed the plans. We canceled the project is what we did.

If the Goal was good why did we cancel? The Goal was good but we couldn't make a plan that fit the conditions that would carry us to that goal.

When I say fit the conditions I really mean two sets of conditions. One, the conditions that exist right now and two, the conditions that will exist in two years.

We may have made a big mistake in canceling this project. Conditions in another 2 years will tell us the story.

We knew what the goal was, we knew our value system, we knew our capabilities, and we had a plan. Some of the most important parts of the plan were not under our control. Thus is seemed to be a good idea to cancel this project and to go for another project that we could control better. We would take a smaller risk over a shorter time so that changing conditions could not overwhelm us.

(Continued on Page 7)
See "Rigging Shack"

IN THIS ISSUE



ON THE FRONT:
Ryan Clark points the Ponsse Scorpion with H7 Ponsse head into the trees where he will start another corridor in this thinning job for Bekkevar Logging & Trucking.
See "Farming on the Mountain" starting on Page 6

4. RIGGING SHACK

"Classic" From September 1982 by Finley Hays

6. FARMING ON THE MOUNTAIN

BEKKEVAR LOGGING AND TRUCKING. by Brandon Hansen

22. AS WE SEE IT

23. SUMMARY JUDGEMENT

TRUMP PARDONS THE HAMMONDS BY WORK REMAINS

by William Perry Pendley

26. IRON MART

28. SHOW AND SELL

LOGGERS WORLD

Published by LOGGERS WORLD LLC

Founded in 1964 by Finley Hays

Phone (360) 262-3376



Member and Supporter of the
American Loggers Council Since 1994



PUBLISHERS.....Kevin & Nancy Core
EDITORS EMERITI.....Finley Hays, Mike Crouse
EDITOR/WRITER.....Brandon Hansen
ADVERTISING.....Kevin Core
OFFICE MANAGER.....Nancy Core

POSTMASTER: Send address changes to:

LOGGERS WORLD LLC,
P. O. Box 1631, Chehalis, WA 98532-8425

E-Mail: logworld@aol.com

SUBSCRIPTION RATE (In U.S.A.):
\$25.00 per year; Two years for \$50.00

LOGGERS WORLD LLC cannot and does not assume responsibility for the contents of any advertising in Loggers World. The representations made by advertising is the responsibility of the advertiser and not Loggers World. Loggers World does not knowingly accept advertising that is false or misleading. The limit of Loggers World liability in case of a mistake made in advertising copy by Loggers World will be the charge of the actual space containing the error or less for that particular advertisement

DOOSAN**Authorized Dealer**

Sales, Parts & Service
Your #1 Established Forestry Equipment Dealer

**Cascade Trader has a
Complete Line of new
Doosan Log Loaders, Excavators
& Wheel Loaders for your
Logging & Construction Needs!**

Cascade TRADER Inc.
EQUIPMENT SALES - LOGGING & CONSTRUCTION



**Ask
About Our
Special Financing:
Up to 60 Months**

All offers
subject to credit approval



Thunderbird TMY45, recent work,
includes dolly\$85,000



Doosan DX300LL-5 Log Loader,
NEW IN STOCK



CAT 980G, Medford Log Forks
\$59,500



**Thunderbird
TSY-6140
Swing
Yarder**,
now in stock,
must see!
\$312,000



DOOSAN DX85R Excavator
New Inventory



**New DOOSAN DL220-5 Wheel
Loader - NEW IN STOCK**



DX300LC-5 Excavator
NEW INVENTORY

LOG LOADERS

CAT 235C Log Loader, Pierce Boom	\$17,500
CAT 325L Log Loader	POR
CAT 568 Log Loader, 2012	POR
DOOSAN DX300LL, well maintained	\$115,000
DOOSAN S300LL Log Loader	\$85,000
HYUNDAI R290LC Log Loader	\$115,000
HYUNDAI 320LC-9 LL, low hours	\$225,000
JD 892D Log Loader	\$34,500
JD 200LC LL, Forestry Cab	\$49,500
JD 3554 Log Loader, rear entry	POR
KOBELCO SK200LC Log Loader	\$34,500
KOBELCO SK210LC Log Loader	\$64,500
KOBELCO SK260LC LL, Forestry Cab	\$125,000
KOEHRING 6625 Log Loader	\$18,000
KOMATSU PC300HD Log Loader	\$37,500
PRENTICE 610 LL, KW Truck Mt	\$27,500
THUNDERBIRD 1238 Log Loader	\$39,500

FELLER BUNCHERS, PROCESSORS

CAT 320C/Waratah HTH622B	\$89,500
CAT 322C/Pierce 3348 Stroker	\$55,000
CSI Pull Thru Delimber/Processor, nice!	\$38,500
DOOSAN DX300LL-5/Pierce GP	POR
KOBELCO SK260LC, Ponsee Harvester	POR
KOBELCO SK290LCLL, Rear entry, Keto 800	\$125,000
KOMATSU PC128/Log Max Harvester	\$39,500
KOMATSU PC220LC/Pierce 3348 Stroker	\$119,500
KOMATSU XT450L, 2014, Q24/360, 3000hrs	\$355,000
KOMATSU XT450L, 2014, Q24/360, 5300hrs	\$269,000
LINKBELT 350X2/Waratah HTH624C	\$117,500
MADILL 2800/Denharco DM3500	\$35,000
MADILL 2850B FB, Quadco 360	POR
THUNDERBIRD 1236/Denharco DM3500	POR
TIMBCO T445, Bar Saw	\$45,000
TIMBCO T445C, Quadco 22", nice!	\$79,500
TIMBERJACK 2628, Bar Saw	\$29,500
WARATAH HTH-623C, NEW Inventory	POR

TOWERS & YARDERS

CHRISTY Yarder, Truck mount	\$49,500
KOBELCO SK300LL- Tong Tosser/Yoder	POR
LINKBELT 370LX LL "Yoder"	\$112,500
MADILL 071's, 3 to choose from	POR

PSY-200, Self-Propelled, nice yarder	\$199,500
SKAGIT BU-80C,T-90 Trailer Mount	\$32,500
SKAGIT BU-94/T-100 Trailer Mt	POR
SKAGIT GT3 Track Mount, reduced	\$65,000
THUNDERBIRD TMY45, Trlr Mnt	\$85,000
THUNDERBIRD 6140 Swing Yarder, nice	\$312,000
WA 78-40 Swing Yarder	\$42,500
WA 127W, T90, Trailer Mt, reduced	\$24,500
WA TL6 3-Axle SP, 50' Boom	\$29,500

**EXCAVATORS/DOZERS/GRADERS
WHEEL LOADERS/SKIDDER**

CAT 14E Grader	\$14,500
CAT EL240B Excavator	\$18,500
CAT 515 Grapple Skidder - in soon	\$55,000
CAT 966D, Medford Log Forks	\$49,500
CAT 980GII, Medford Log Forks	\$59,500
DOOSAN DX140LC-3, low hours	\$135,000
DOOSAN DL400 Wheel Loader	POR
FIAT-ALLIS 8, Winch/Arch	\$18,500
FMC 210 Track Skidder, Grapple	\$34,500
GARRETT 25 Skidder, Cummins	\$12,500
JD 200D Excavator	\$45,000
JD 2454D Road Builder, Excavator, low hrs	POR
JD 892D Excavator	\$39,500
KMC Track Skidder, Grapple, low hrs	POR
LINKBELT 3900Q Excavator, Bucket/Thumb	\$27,500
MADILL RB500 (180 size) Excavator, guards	\$45,000
TIMBERJACK 404 Skidder	\$8,950
CAT HF201 22" Disc Saw, tilt, low hrs	\$22,500
CEC Portable Jaw Crusher, Trailer Mnt	\$85,000
CTR 314SCD Pull-Thru Delimber	\$18,500
DANZCO PT20 Pull Thru Delimber	\$10,500
DIAMOND Z 1460 Tub Grinder, 2010	\$289,500
GENERAL Turkey Rack, like new	\$9,000
HAHN Harvester, 2-axle w/Dolly	\$17,500
KETO 804 Processing Head	POR
MORBARK 30RXL Chiparvestor	\$110,000
OLATHE 10' Tub Grinder, reduced	\$35,000

TRUCKS

KW Log Trucks, details on request	POR
PEERLESS 3-Axle Log Trailer	\$19,500
PETERBILT Dump '92, 3406	\$35,000



**DOOSAN Log Loaders
LOTS OF INVENTORY!**



**Doosan DX225LL-5 "Road
Builder"**P.O.R.



CAT 320C/WARATAH HTH-622B.
\$89,500

KETO • WARATAH • SOUTHSTAR • EAGLE CARRIAGE

Rich Lennox
Shannon Pesicka
Mike Duch

(360) 508-0192
(360) 507-0542
(360) 880-6955

Jim Wark
Cooper Brunoff
John Griffin

(360) 623-5219
(360) 880-7534
(425) 210-9702

Tony Foglio
Colton Moorhead

(360) 520-7084
(360) 827-0262

Traci Brunoff • Sales Coordinator: (360) 880-7531

www.cascadetrader.net



Find us on
Facebook

(360) 748-1182

fax (360) 748-1198 •
Located at Exit 79 off I-5
1380 NW State Ave., Chehalis, WA 98532

FARMING ON THE MOUNTAIN

**Bekkevar Logging and Trucking
keeps things diverse**

HIGH ABOVE THE LANDING

A drone catches the sight of the tower side for Bekkevar Logging and Trucking. The Madil 071 is a relatively new addition to the company that has been going since 1979. Located on the Washington Peninsula, the tower is a must for the diversified company that keeps up production. (Photo by Ole Bekkevar)

Free Ball Cap

While supply lasts, get a
100' of OREGON® 3/8"
square-ground chisel saw
chain for only:

\$279



Plus, mention this ad
and we'll throw in a
FREE collector's ball cap
with your roll of chain.

Get yours today!

MADSEN'S
SHOP & SUPPLY INC.
Centralia, Washington

☎ 360-736-1336
Information Calls
☎ 800-822-2808
Direct Order Line
www.madsens1.com

**Photos by Kevin Core
Story by Brandon Hansen**

For Loggers World

For longtime company
Bekkevar Logging and Trucking,
diversity has allowed the Se-
quim-based operation to grow
and find new niches in the west-
ern Washington timber industry.
Began in 1979 by Dave Bekkevar

when he didn't want to sit in a
log truck anymore, it started
with one John Deere 440 rubber
tire skidder and has since grown
to 30 employees and the ability
to take on several different types
of "projects" including tower log-
ging, ground-based logging, cut-
to-length, trucking, and road con-

(Continued on Page 9)
See "Bekkevar"



**Need Financing?
We Can Help!**

**We Finance Loaders, Trucks,
Skidders, Trailers, etc.**

- Working capital available
- Start-up program for under 2 years available
- 1st payment only
- 3,4,5 year financing
- 150K application only
- Finance any equipment or attachment...no age requirement
- Personal one on one financing process
- 27 years' experience in the financing industry

Isn't it time you made an investment in your machinery?

Call Doug Powell Today!

888-223-2600 • dee@fullcirclellc.us

After hours cell: 509-393-5111

11 Spokane Street - Suite 306, Wenatchee, WA 98801 • www.fullcirclellc.us



CC HEAVY EQUIPMENT

2016 T-Mar 60" Grapple
TWO AVAILABLE- 2016 T-



Mar 60"
Log
Grapples,
approx-
imately
2000 hrs.
\$15,000
for each
grapple or
\$26,000
for the pair



1995 Caterpillar 312
Excavator w/attachments, 3
buckets, thumb and rake.
70%+ U/C, low hours, No
AC, only heat.....\$40,000



ROB (remote operated bull-
dozer) tethering system
mounted on a John Deere
850J dozer. Built 2 yrs ago,
only used on one job. Nearly
new equipment. Excellent
condition.....call for price!



2009 Koller K301T Yarder and 1995
John Deere 7600 Tractor, Excellent
Maintenance, Comes with Koller
Carriage and Talkie Tooters, 1,200
Ft. of 5/8" Sky Line, 1,700 Ft. of 3/8"
Skid Line\$72,500



98 Linkbelt Yarder,
Holds 1800' of 5/8"
on 2 Drums, 3306
Cat with Recent
Rebuild on
Injection Pump &
Head, s Speed
Allison Trans,
Chain

Drive, Main Line Drum has been
Sped Up. Comes with Talkie
Tooters and Handheld with Base in
Cab. Ready to Yard, Very Fast
Machine. Comes with Acme 10
SkyCar for \$99,000



2004 Link-Belt 210 LX
Logging Processor with
Waratah HTH622B Processor,
70% U/C, LogRite computer,
forestry cab, ready to go!.....
\$79,000



1997 CAT 322CL, 19,000 Hrs., Log
Max 7000 Head, Hyd. Pump Has 5,000
Hrs., SureGrip Controls, New Injectors
& Lines Recently, \$6000 Just invested
into New Logmax Computer &
Measuring Sensors, Ready to
Work!.....NEW PRICE.....\$69,000



#1 Selling firewood processor
in the world. Trailer mounted
mobile platform, live deck, 25
ton splitting ram, produces 3
cords an hour
Starting price \$35,000



1999 Kobelco SK130 Log
Loader with Jewell Boom
and Grapple. 11,000 Hours,
Cummins Engine, Triple Bar
Grousers, 65%+ U/C. Rare
Machine\$61,500



1998 Timberjack 1270B
Harvester With 746C Head,
Brand New Front Tires,
Comes With Parts Head,
Excellent For Cut To Length
.....\$29,000



2003 Timberjack 950 Feller
Buncher with 24" Koering
Hot Saw. New Saw Motor on
Head\$55,000



2012 Kobelco SK350 Log
Loader, 5,400 Hrs., Jewell
63" Grapple, U/C 70%+,
Nice Machine! NEW
PRICE!!!.....\$185,000

SEE ALL OF OUR LISTINGS AT WWW.CCHEAVYEQUIPMENT.COM



2007 Link Belt 350 log
loader with 2008 Waratah
624C processing head.
18605 hrs. New seat. UC
70%. Currently working.....
\$149,000



2005 Kenworth T800 with 2005
Assembled Trailer. Cummins ISX 475,
18 speed, 8' 6" bunk gear, 40 K RR's,
no lockers, 2 speeds/ interlock, KW
AG 40 (8Bag) Suspension, 240 WB.
Light Weight is 25,500. Recent
repairs to head and Jakes. (Odometer
not actual)\$59,000



1997 GMC C7500 Boom & Bucket
Truck, 55' Teco Saturn Lift, CAT 3116 Motor,
Air Brakes, 6-Speed Eaton Fuller, Forestry
Package W/Outriggers & Dumping Chip
Box, Needs New Air Plunger For Bucket
Control But operates Fine on Override
Switch, Pintle Hitch, Trailer Lights Wired for
Chipper, New Steer Tires, Boom Complete
Rebuild including Rotec Bearing, Operating
Daily as Needed, Nice Truck!.....\$19,500



1996 Timbco 425 With Valmet
965 Processor Head, On Slide
Boom, Works Good!.....
NEW PRICE !!! \$39,000



1979 Skagit BU98 self propelled
Slackline Yarder, CAT power, 600 HP,
110' HD tube, 8 guylines, completely
rebuild, Very straight, includes lines. New 1
3/8" Swedged X 2800' Skyline, & a skid-
line. Guyline extensions, screwys, double
enders, Radios. This machine has been
working lately. Job Ready.....\$310,000



1999 Timbco 445D with Waratah 230
Processor Head, 10,500 hours,
Runs Great! 8.3 Cummins, Strong
U/C, Nice Processing Setup \$69,000



Dozer, Rear Hitch and PTO Installed,
U/C 65%+, Sprocket Segments at
90%, New Computer & Transmission
Service Done by Peterson CAT, Nice
Running CAT!.....\$46,500

1997
CAT
D5M
LGP
Crawler
Dozer,
9,765
Hrs., 6
Way



Skylead
Yarder with
2010 Super
Eaglet, 5.9
Cummins
with Allison
Trans.,
Comes With
All Lines,
Currently
Working
\$119,000

CCHEAVYEQUIPMENT.COM

Dallas/Salem Rickreall, OR

Carl Cornthwaite • 503-507-7230 • carl@ccheavyequipment.com
Lincoln Cornthwaite • 971-901-1333 • lincoln@ccheavyequipment.com

Rigging Shack

(Continued from Page 2)

What we try to know is what we like to do. We have a value system and the first requisite of any company is to make a profit. Without that the company will cease to exist. Any company that is operating and hiring people is a Plus or Positive factor. Any company that is not paying their bills and will cease to operate is a Minus or a Negative factor. The going thriving company is helping and contributing to the well being of its employees and the people it is doing business with. The company that goes broke hurts many people and many times other people or companies go broke because of the failure of the company.

I think we can all agree upon that.

One man I worked for a long time ago, Lee Stevens of Powder Sales and Equipment, said it well: "You don't do anyone any favors by going broke."

If we can believe that about a business we can certainly see where it applies to families and to each individual.

I operate a small company, I am the manager. I am the boss of a Corporation. In fact I am the boss of two corporations.

One is Loggers World Publications. The other is Finley Hays, Inc. If I do a good job of running Loggers World I must

(Continued on Page 26)

See "Rigging Shack"

PACIFIC FIBRE PRODUCTS

WANTED

Alder, Maple, Douglas Fir, Cedar
Hemlock, Cottonwood
PULP LOGS

Land & Timber or Timber Only
Paul Hadaller • 360-431-9661

Rob Vance • 360-355-2817

P.O. Box 278, 20 Fibre Way, Longview, WA.
Office: 360-577-7112

**WE ARE NOW PURCHASING
LOGS IN MOLALLA, OREGON!**

**Oliver-Hammer
Clothes Shop**

**Clothing the
Working Man for
97 Years**

Wesco Caulk Boots, Redwing,
Carhartt, North Star
Gloves, Hickory Shirts,
Logger "Riggin" Jeans and a
Whole Lot More

(360) 855-0395

821 Metcalf,
Sedro Woolley, WA 98284

REPORTING IN FROM...



BEKKEVAR LOGGING & TRUCKING

Began in 1979 by **Dave Bekkevar** when he didn't want to sit in a log truck anymore, it started with one **John Deere 440** rubber tire skidder and has since grown to **30 employees** and the ability to take on several different types of "projects" including **tower logging, ground-based logging, cut-to-length** and **road construction**.

SEQUIM WASHINGTON

Located in **Clallam County, Sequim** is a town of 6,606 with a surrounding area population of **28,000**. The town is in the rain shadow of the **Olympics** and gets the same amount of rainfall as **Los Angeles** which gives the town the nickname "**Sunny Sequim.**" Still it's close to many forests key to a strong timber industry.

WRECKING LOGGING EQUIPMENT

EXCAVATORS • CRAWLER TRACTORS • ROCK TRUCKS • LOADERS • GRADERS



Parting Out

2007 Cat 324DFM



Parting Out

2005 Link-Belt 370LX



Parting Out

2006 Cat 950G II



Parting Out

2013 Deere 225DLC



Parting Out

2000 Hitachi EX270LC5



Parting Out

1996 Hitachi EX400LC3



Parting Out

2012 Deere 135D



Parting Out

2004 Deere 953G



Parting Out

2003 Cat 325CFM



Parting Out

2004 Deere 200CLC

FRALEY TRACTOR, Inc. WRECKING DIV.

(509) 884-7117 • FAX (509) 884-3959 • fti2@nwi.net • 1850 GRANT RD., E. WENATCHEE, WA 98802

CAT EXCAVATORS

314C; 315BL; 320LL; 320BL; 320C; 322CL; 324D; 325C; 325L; 330BL; 345BL; 345CL; 350L

CAT TRUCKS

D25D; D250E; D300E; D400D

CAT SKIDDERS

D5H; D4H; 525; 527; 525C

CAT SCRAPERS

615, 621E

CASE

821; 9030B; 9040B; 9050; 9050B; 9060B

GROVE

RT745

LINK-BELT

210LX; 240LX; 290LX; 350LX; 370LX; 5800 CII-Q; 6000Q

KOBELCO

ED150; SK290LC6; SK200LC IV; SK400LC IV; SK330

JOHN DEERE

120C; 135D; 160DLC; 200DLC; 225DLC; 2554; 330CLC; 350DLC; 450DLC; 550H; 544J; 544G; 600CLC; 624G; 644H; 644G; 648GII; 710D; 750B-C; 744H; 753GL; 772BH; 844J; 850J; 992D-ELC

SAMSUNG

SE 350LC2

TIMBCO

T425B-C-D; T445B-C-D; T445EXL; 475D; 475EXL

TIMBERKING

TK722; TK732; TK1162

KOMATSU

PC120-6; PC130-6; PC138US-2; PC220LC7; PC160LC-7; PC200LC-6; PC220-6E; PC228USLC-3; D155AX5; D355A; WA 200-1; WA180-1; WA400-1; WA320-1; WA180-3; WA250-3; WA500-1-3-6

TIMBERJACK

608; 628; 1210B; 2628; 1270B

HITACHI

ZX27U; ZX120; EX150; EX160; ZX200LL; EX200-5; EX200LC3; EX220-3; ZX270LC3; ZX330; ZX350LC; EX330LC5; EX400LC3; ZX450LC; EX550LC5; EX700; EX750-5; ZX850LC3

VALMET

EX10; 500T; 860; 892

VOLVO

A25C 6x6 Rock Truck; L330C; L120E; L180C; L220E

WE BUY HEAVY EQUIPMENT FOR PARTS AND RESALE...CALL US!

Visit us on the web at: www.fraleytractorinc.com



struction.

And anytime during the year, the company can have a road side and three harvesting sides operating and producing thirty loads for 13 trucks a day.

"We've gone from three to four employees to 30 in about the last ten years," Ole Bekkevar, the son of Dave, said. Ole now oversees the day-to-day logging operations. "We'll continue to grow depending on supply and demand and there's so much work for us out there right now."

Bekkevar Logging and Trucking does a lot of work on DNR land along with projects for Interfor and Murphy Plywood.

HOW DID IT START?

Dave Bekkevar was the middle kid of the family, born in 1954 and raised on a farm. According to Ole he still operates a 120-acre family farm but farms around 200 acres and has about 60 head of cattle and still finds time to haul equipment around on a lowboy.

But back growing up, Dave enjoyed digging clams and milking cows for gas money. While he originally wanted to be a farmer,

working in the woods proved to be a more lucrative operation. He cut his teeth with Irving Johnson in Dabob Bay and then ran skidder for George Matriotti.

He went back to work for Irving, who needed a truck driver, so Dave jumped into a 1960 International single-axle with a double-axle trailer. The truck — which Irving offered Bekkevar as his if he took the job — was powered by a 345 gas engine with a five speed and a two-speed rear axle.

When it went through a couple of rear ends and a motor, Bekkevar went looking for a second

truck and found a 1968 Peterbilt with a 335 Cummins with a five and four speed transmission and HQSD rear ends. He still has the Peterbilt and plans on hauling logs again with it to finish his career how he started.

He bought that truck in 1974 and Dave Bekkevar trucking took off, hauling logs from the Seattle watershed to the Hoh Rain Forest for five years.

MOVING INTO LOGGING

Not wanting to just sit in a truck, Dave bought a John Deere

(Continued on Page 12)
See "Bekkevar"



2005 ZEHR HG4000 GRINDER, early Diamond Z, 2009 CAT C27, Tier II, 1,050 hp, remote, stacking conveyor, 8 NEW tires, good brakes, twin-disc clutch, hammer-mill approx. 62" x 17".....\$129,500



2002 PRECISION HUSKY 66-23 CHIPPER, Husky XL-175 loader, CAT 3412, 700/750 hp, Tier I, joy sticks, twin-disc clutch, feed table w/feed chain, cab, 12 NEW tires, good brakes, fresh oil, new paint, recent injectors, one owner, was working daily, 11,141 hours.....\$99,500



1996 PETERSON 4400B GRINDER, CAT 3412 @ 800 hp, 3 axles, all new tires, twin-disc clutch, dual horizontal rams for feed, heavy rotor, good last clean older unit, approx 87,000 lbs. w/o tractor.....\$79,500



MORBARK 20 CHIPPER, new CAT C13 with 3,684 hours, 385 hp, Tier III, new tires, good brakes, lights.....\$69,500



2008 VERMEER BC2100XL CHIPPER, Cummins diesel, approx. 275 hp, new knives, clutches, PTO, hyd feed rollers, 5,227 hours, good for age and hours.....\$55,000

NEW HEEL RACK FOR CAT 330FM OR 568 FM, unused, some pins.....\$7,500

MPI

INCORPORATED

Call Chuck
530-221-6760

8537 Commercial Way, Redding, CA 96002

chuck@mpiequipment.com

www.mpiequipment.com



2014 JOHN DEERE 748H SKIDDER, dual-function boom, grapple, winch, direct drive, good 30.5 tires, tight center, runs well, 6,990 hours.....\$139,500



2013 JOHN DEERE 290G LC HYDRAULIC EXCAVATOR, Q/C, link style hyd thumb, good a/c, just arrived.....\$149,500



2012 JLG G12-55A 12,000 lb., prior rental, good condition, just arrived.....CALL



BTI SH550R Shear, second member, for 330-Size and up carriers, 1,600 Hours.....\$50,000



PROLENC SNUBBERS for skidders, in stock.....CALL



WASHINGTON 188 YARDER, Detroit 8V92T power, 4-axle carrier, standing skyline. This is a good, clean unit that was working as of 06/10/16. Consigned, call for location.....\$250,000

EAGLET CARRIAGE, w/controls available.....\$18,000



1996 CHRISTY 3DTK, 6-cyl Cummins, 2000' 3/4" swedge skyline, approx. 2000' 5/8" swedge mainline, haywire, guy lines, NO carriage, 75MHz radio system, approx. 6,500 original hours, mounted on Freightliner w/Cummins power, heavy 2-speed rear ends, biscuit suspension, good clean unit. Yarded logs until October 15, 2015. Owner is downsizing, consigned, call for location.....\$75,000



2004 TEREX TH842C REACH LIFT, 8,000 lbs, 42' 48" forks, very good foam-filled tires, Deere diesel, hours N/A, nice machine.....\$32,500



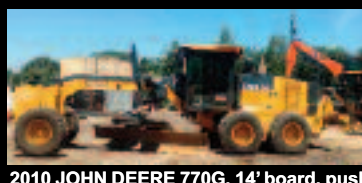
2008 CAT 14M VHP, 16' board, push block, rear ripper, good 20.5 tires, AC, Accugrade-ready, clean unit, Tier III, runs & shifts well, 8,155 hours.....\$155,000



2012 CAT 12M VHP PLUS, rear ripper, push block, 14' board, 14:00x24 tires, former county machine, sold new August 2012, 4,795 hours.....\$147,500



2008 CAT 140M AWD VHP PLUS, 14' board, rear ripper, 14:00Rx24 radials, 6x6, cab, AC, orig paint, 6,252 hrs.....\$129,500



2010 JOHN DEERE 770G, 14' board, push block, rear ripper, aux hydraulics, 17.5 radials, cab, air, fair paint, prior county unit, good machine, 7,633 hours.....\$109,500



2010 JOHN DEERE 770GP, 14' board, push block, rear ripper, Pilot controls w/steering wheel, aux. hydraulics for snow equipment, very good 17.5 Bridgestone-tires, cab, AC, NEW paint, prior county unit, 8,105 hours.....\$110,000



2012 CAT 120M2 AWD, 14' blade, push block, rear ripper, auxiliary front hydraulics, Tier 4, 14:00x24 tires, former government machine, nice, 5,012 hours.....\$145,000

CRISP LOG FORKS/GRAPPLE, fits CAT 950B/E/F, good for age.....\$2,500



2013 LINK-BELT 300 X3, Esco hydraulic QC, Esco link hydraulic thumb, good undercarriage, Isuzu engine, AC, radio, nice unit!, 2,619 hours.....\$137,500



2013 LINK-BELT 145 X3 Spin Ace, Esco bucket, Isuzu engine, pattern changer, cab, AC, good clean unit.....\$79,500



2005 LINK-BELT 290LXTL w/log max 7000 processor head, log loader front, high & wide undercarriage, tall cab, just off job, consigned, call for location.....\$150,000



2012 JOHN DEERE 210G LC, hydraulic QC, hydraulic thumb, 32" tracks, good unit, 4,653 hours.....\$125,000



2013 VOLVO EC35C, new bucket, new Amulet thumb, blade, off-set boom, good clean machine, prior rental, 1,406 hours, located in McKinleyville, CA, call Mark at 707-499-6263.....\$27,500



2015 CAT D4K2 XL 6-way dozer, rear ripper, open ROPS, wired, fair undercarriage, 2,087, just off job.....\$89,500



CUT-TO-LENGTH

Part of the cut-to-length side of Bekkevar Logging and Trucking is a Ponsse Scorpion with a H7 head operated by Ryan Clark with his furry sidekick, Harley. We kind of have cornered the market out here," Ole Bekkevar said. "We had been thinning and had stepped into it. It's low-impact and it looks good."

LOGGERSWORLD.COM

OREGON CHAINSAW SHOP

www.oregonchainsawshop.com

Who Is Oregon Chainsaw Shop?
Oregon Chainsaw Shop is the online store for L & L Equipment, Inc. dedicated to bringing you the toughest and most durable chainsaw products on the market.

CHECK WITH US WHEN YOU NEED:

- | | |
|-------------|--------------|
| ✓ STIHL | ✓ SUGIHARA |
| ✓ HUSQVARNA | ✓ HARVESTER |
| ✓ OREGON | BARS & CHAIN |



503-623-5116

Or stop by our full service shop at
1145 SW Oakdale Ave.
Dallas, Or 97338

L&L EQUIPMENT

GOOD JOBS IN ALASKA!

**FELLERBUNCHER AND WARATAH
PROCESSOR OPERATOR,
TRUCK DRIVER & MECHANIC
POSITIONS AVAILABLE,**
only the experienced need apply



Remote Camp Facilities Include:

- | | |
|-------------|-----------------------|
| ✓ Internet | ✓ Professional Chef |
| ✓ Telephone | ✓ End of Season Bonus |
| ✓ Dish TV | (conditions apply) |
| ✓ Laundry | |

This is a remote job in Alaska with a 25 man crew. Camp facilities include Internet, telephone, dish TV, laundry. It's a clean dry camp with a professional chef. A handsome bonus is built in our production to be paid at the end of each season for those who stay all season. Mid May to mid October Wages DOE.

Contact Mark Fairchild @ Mfairchildtkg@aol.com

907-715-9879

Or Kelly Fairchild @ kelly@fairchildtransport.com

907-687-8866


PONSSE

BOOST/SAVE

Ponsse introduces the new and cleaner MTU/Mercedes Benz **Tier 4 Final** engines for North American markets. The new engines have more power, better response, lower fuel consumption and longer service intervals. All this with up to 10-times lower emissions compared to earlier Tier 3 engines. **This means efficient and even more productive logging!**

New engines have been extensively tested to meet the demanding conditions. They have been used in Europe since 2013 and more than 2000 Ponsse machines. Every single day these engines are running tens of thousands of hours.

Save fuel and boost your operations.

This is our philosophy for significant savings. With modern products, information systems, training and right service, you can improve productivity, fuel efficiency, and reduce environmental impact. We are constantly striving to improve the fuel efficiency of all our products and services.

John Holmes – Western Wisconsin 715-318-0502
Sam Heikola – Eastern Wisconsin 715-318-6608
Jim Charlier – Upper Michigan 906-680-0600
Bruce Broden – Lower Michigan 989-715-4393

Paul Estabrooks – Minnesota 218-216-1976
Sean Vann – Rocky Mountains, US Southwest, Alaska 406-290-1717
Jouni Viitikka – Pacific Northwest 541-359-2647
Håkan Berg – Harvester & Processor Head Sales Manager 715-318-6740



THE BEKKEVAR

Dave Bekkevar poses for this photo with his sons, Ole and Nelson. Ole runs the logging side and Nelson is in charge of the maintenance/service for the business.

Bekkevar

(Continued from Page 9)

440 rubber tire skidder thanks to some help from Johnson. Bekkevar paid him back in six months but the bottom in the markets dropped out.

With exports still going, Dave found a way to keep busy, skidding and road side decking as a subcontractor for other loggers. He would eventually buy a Prentice 210 log loader and gradually increased his ability to do more over time.

"You should do it because you enjoy doing it and you like it," Dave said in a 2010 article in *Loggers World* said, noting if you love your work it is enjoying what you do. "If its not there (in logging) there are other things."

UPGRADING

In the mid-80s, Bekkevar bought his first Hahn Harvester to keep up with production and different timber sizes. He also bought a John Deere 690 feller buncher with Haricana shear head.

While the spotted owl slowed things down, being a small operation allowed Dave to weather the storm. Being able to cut poles allowed Bekkevar to keep moving when market demands shifted.

In 1996, he purchased a Timberjack 2618 with a Koehring hot saw

and an Ultimate processing head which they put on a CAT carrier to replace the Hahn.

Around 2000, he bought a newer Hahn Harvester and five years later he bought a Komatsu 200 with a Waratah 624B super dangle head processor. After that he bought his first stroke delimber a Denharco 3400 on a Link-Belt 3400 Quantum.

As the 2000s moved on, the Bekkevars sons then grew into the company. Nelson (32) Ole (31) and Eli (28) brought their talents into the woods and used the family philosophy while working in the woods. Dave explained in 2010 that they could make their own choices when getting into the company.

"...only if they want to come into it," Dave Bekkevar said. "It would be great if they did but ok if they didn't. Right now they seem to have the enthusiasm, drive and want to do it. They'd have good ideas if they want to, and they've all learned... they're not afraid to work."

The company also ran a log yard until 2007, again keeping up with diversity in a changing market. About four years ago, Dave's kids began purchasing the company from him and slowly taking over operations.

(Continued on Page 13)

See "Bekkevar"

Introducing

NAS 
NORTH AMERICA SUPPLY

www.NorthAmericaSupply.com



Your new link to www.tirechainsrequired.com and www.harvesterbars.com. These two sites are coming together to offer you all the same high quality brands you've come to know and trust in one convenient online location. Tire chains, saw bars, saw chain and hot saw teeth delivered straight to your door.

Visit or call toll free to speak with a rep at

1-855-255-0871

sales@northamericasupply.com
Logging and industrial supplies,
wire rope, chain and
accessories coming soon!

American
Chains



CARLTON

Ballantine

Appelo Archives Center

Logging Museum, Library and Bookstore



Our best selling book:

"When Logging Was Logging" is available for purchase in store, online, and over the phone!

1056 SR 4 Naselle, WA 98638

360.484.7103

info@appeloarchives.org

www.appeloarchives.org

The Appelo Archives Center specializes in preserving and presenting the history of the Naselle-Grays River Valley area of SW Washington. The Archives offers a museum, local genealogy, library, archival material, and bookstore.

Open Tues.-Fri 10am to 4pm and Sat. 10am-2pm

Photo:

Deep River Logging Co.'s
Shay No. 5 at the Deep
River log dump, 1912.



(Continued from Page 12)

"We're the farmers of the forest," Dave Bekkevar explained in a 2010 Loggers World article, "and long as there are people on the Earth, they've got to have the product we produce, just like the American farmer."

In 2008, the company got into road building to deal with the changing markets and the recession. It continued as the boys and dad kept their company busy by taking on different jobs and pro-

jects. This led to them branching out even further than just a ground based operation.

Building roads today for the company is Crew Manager Darin Moriarity, Josh Stahlbaum on a Cat 325, Mike Meyer on a Dozer D5, Phil Briethaupt on a Volvo Excavator 460 and Dave Burgraff running a dump truck or Kubota 080 excavator

BRANCHING OUT

Bekkevar Logging and Trucking eventually got into tower logging as it seemed like towers were needed on every job on the Peninsula. Now they use a Madill

071, operated by Wayne King, with a Boman carriage to bring up turns.

It's been about seven years since they began doing cable work, which has since added to the company size in order to keep a ground crew setting chokers.

"The big thing is just finding good workers," Ole said. "We're really lucky with the people we have. We couldn't do it without them. We have a great combination of experience and range of age in our employees. Some that have been with the business or in the business for 25 plus years.

We benefit from their experience to help train the new employees. Ten different loggers will do it ten different ways with the same result. Logging isn't something you learn from a text book it takes experience."

The company offers full benefits, medical, dental and a matched 401k retirement along with a paid vacation and bonuses for reaching production goals.

"Employees are what make the business run," Ole said. "We want people to work for us and we try and get out there with them. We don't ask them to do what we want do ourselves."

Ole said he ends up being on the tower side a lot as a hook tender and appreciates the guys he has out in the brush. On the ground is chaser Bailey Roark, choker setters John Black and Dan Cox along with rigging slinger Anthony Oakley.

In the machines, Joe Barnes operates the Cat 325 loader, while Jay Headley operates the processor - a Link Belt 290 with a Wartah 623.

"We've got a good crew in machines and on the ground," Ole said.

GROUND BASED

Ground-based logging is still one of Bekkevar Logging and Trucking's bread and butter sides. They have Robby O'Dell operating the Madill 3800 shovel, while Alan LaGambina operates the Hitachi 250 loader.

Jerry Cassalery runs the processor - a Komatsu PC 300 with a Waratah 624 head, while Dan Belgrade runs the fellerbuncher, a Madill 2200.

They have a 545 Skidder CAT that can bring in logs as well.

CUT-TO-LENGTH

Bekkevar and Trucking Logging began cut-to-length logging five years ago, and have since found their niche on the penin-

(Continued on Page 20)
See "Bekkevar"

CALL US FOR ALL YOUR DOOSAN NEEDS



**Ask about our
Finance and Lease
Specials!**

DOOSAN

Authorized Dealer

- Parts
- Service
- Sales
- Rental
- Lease




Serving the Northwest Since 1901

(503) 282-2566
 Fax: (503) 282-1755
 4800 N.E. Columbia Blvd., Portland, Oregon 97218

(541) 636-3660
 541-357-4542
 9404 Highway 99 N., Eugene, Oregon 97401

feenaughty.com

END GREASING FRUSTRATION



ORDER ONLINE
OR CALL

GREASE GOES IN, NOT ON, THE MACHINE

LOCKNLUBE.COM | 603.795.2298



MIKE MEYER

Mike Meyer poses for this photo by Loggers World in front of Bekkevar and Logging's D5C on the road-building side.



DARIN MORIARITY

Darin Moriarity is the crew manager/side rod for Bekkevar.



OLE AND PHIL

Ole Bekkevar talks to Phil Breithaupt about the details on this roadbuilding job. Phil is in a Volvo Excavator 460 on the road-building side of the company.



COWLITZ RIVER RIGGING

Ask about our Cab Guards

Full Service Shop
 Full Service Rigging, Saw Repair & Work Clothing
www.LoggingSupply.com
Toll Free 1-800-488-3127



NEW!
AARCOMM
RADIO
SYSTEM

We

Also Have

Eaglets,

Super

Eaglets,

Eagle IV,

Eagle V,

Eagle VI

& Claws

Available

EAGLE CARRIAGE & MACHINE

ECM CONTROL ON
ALL NEW MODELS!

62500 Commerce Rd, La Grande, OR 97850
www.eaglecarriage.com

(541) 963-4646

Fax: (541) 963-3415

After Hours - Sam Baker
 (541) 805-9504 cell



DAN BELGRADE AND JOE BURWASH

Dan Belgrade operates the Madill 2200 feller-buncher with Quadco head (LEFT). Joe Burwash steps out on the running board of the Valmet JB8903 forwarder for a picture (RIGHT).



The grapple processor that changed the industry,
does it again!

Unveiling a new
generation.

The revolutionary forestry tool that changed the industry is changing it again. Get ready, because the new Pierce GP Pro Series is more advanced than ever before.

The GP Pro Series represents the best of Pierce's pioneering spirit, innovative engineering and state-of-the-art technology. We're not only in the business of improving our equipment, we're in the business of improving your production. No other forestry tool makes a bigger impact on productivity than the GP Pro Series.



Strong. Dependable. Innovative.

WWW.PIERCEPACIFIC.COM TOLL FREE: 800.760.3270
PORTLAND, OREGON



VISIT OUR BOOTH SEPTEMBER 13-15 CORVALLIS, OREGON

TEREX DOZER PARTS

New 9" pitch drive sprockets	\$3,400 pair	Front blade hyd. cylinders.....	\$1,500
New 8" pitch drive sprockets	\$3,200 pair	Track tightener cyl	\$400-\$600
Pair used 9" pitch tracks and pads for Terex or Cat, 1.5 inch grousers	\$2,500	New rebuilt Detroit inline 6-71 engine ...	\$9,000
Bottom Terex rollers.....	\$400 - \$700 new	Good running Terex dozers with blade and drum.....	\$1,500 & up

503-623-2089

TRIPLE T EQUIPMENT
Rickreall, OR 97371

clp_inc@msn.com

MAXIMIZE YOUR RUNTIME

Advanced Technology
Extensive Field Testing
Cutting-Edge Materials
Unmatched Durability

GEM
Chain Bar

Harvester Bars - Harvester Sprockets - Chain
Measuring Wheels - Bar Repair - Replacement Tips

WWW.GEMCHAINBAR.COM
800-455-8471

© Loggers World Oct. 2016, Brandon Hansen, Photographer

DAVE AND HIS TRUCK

Dave Bekkevar poses in front of his 1968 Peterbilt log truck. This was Dave's second log truck, replacing his original International.



HAVING A CONFERENCE

Nelson Bekkevar (son of Dave, brother to Ole) Colten Bartlett and Ponsse Rep. Dustin Conley talk things up in the Bekkevar Logging and Trucking shop.



www.acmecarriages.com

FORTRONICSTM LTD
FORESTRY ELECTRONIC CHOKER SYSTEMS



90099 Prairie Road
Eugene, OR 97402
Phone 541-741-2200
After Hours: 541-554-9414



THE TOWER CREW

Keeping the logs flowing is the tower rigging crew (left to right) of Anthony Oakley, Dan Cox, Bailey Roark, and John Black. Tower operator Wayne King, processor operator Jay Headley and loader operator Joe Barnes is not in picture. *These photos were taken by Ole Bekkevar*



The PRODUCT you want...The PRODUCTION you want...



4x8 Screen-it



5x12 Track Screen-it

Crushing • Screening • Washing • Conveyors



Rock/Wood Separator



6x16 Screen-It

...At a PRICE you can afford



CONSTRUCTON EQUIPMENT CO.

PARTS & SALE OFFICE

18650B SW Pacific HWY
Tualatin, OR 97062

MFG PLANT

540 SE Jefferson Street
Sheridan, OR 97378

For over 35 years we have been
dedicated to serving your
parts & equipment needs.

Give us a call today!

503-692-9000

Visit us at www.ceccrushers.com



CEC • MADE IN THE USA • CEC • MADE IN THE USA • CEC • MADE IN THE USA • CEC • MADE IN THE USA • CEC • MADE IN THE USA



SHOVEL LOGGING

Working out in the woods is Robert O'Dell (RIGHT) in a Madill 3800 shovel.



Worker's Compensation for Loggers!

and your liability needs, too.

Many of you know us as the agency to see for Disability Income, Medical and Life Insurance... but we are a full-service agency with packages dedicated to the logging industry and related businesses. We have excellent markets for:

- Worker's Compensation
- Commercial General Liability
- Logger's Broad Form
- Commercial Auto
- Cargo
- Commercial Property
- Inland Marine (Your Iron)
- Bonds



Photo courtesy of Jodie Compton

Call today for more information!
866-514-3356 Toll-Free!

360-274-6991 • 25 A Street SW, Castle Rock, Washington 98611

Wayne Lunday, LUTC, CLU, ChFC

Aaron Lunday

Gail Mowrey, ACSR, CMSR, CRIS

Commercial Insurance Manager



CAT
928G
930G
924G
938F
Parting
Out



CAT D6C Parting Out



Clean 359 Peterbilt, short hood,
Cummins, 13 spd. **\$13,800**



D4H CAT, 6k Hrs., ripper, rops,
screens, and extra guarding,
\$44,500



Denharco DM 3500
Thunderbird 736D
Parting Out



CAT D342
High HP.
rebuilt
Call



DUKES
PARTS & EQUIPMENT
509-952-9223

2015 S. 18th ST, Union Gap Wa. 98903 **Shop: 509-469-9420**
Check us out online: www.dukesheavyequipment.com



JERRY CASSALERY

Jerry Cassalery is hard at work in the Komatsu PC300/Waratah 624 processor making trees into logs.



**ZENDER EQUIPMENT
COMPANY**

Contact: Kevin Zender (360) 319-7973

Rod Hansen (360) 520-6849

Bob Howell (541) 913-9559

Email: kevin@zenderequipment.com

rod@zenderequipment.com • bob@zenderequipment.com

www.zenderequipment.com • Everson, WA

LOG LOADERS

2016 JD 2954D LL, w/Jewell grapple, 4,400 hrs, very good cond.	\$287,500
2006 JD 3554, w/Jewell grapple, 14,000 hrs, auto lube system	\$80,000
1996 JD 690 ELC, w/Young grapple, w/tong tosser & winch, u/c 50%, 19,000 hrs.....	\$72,500
2011 Cat 568, w/T Marr grapple, 11,500 hrs, new u/c	\$199,000
1993 Cat 330A, w/two HL-25 Pullmaster winches & grapple.....	\$135,000
2000 Cat 325B, w/Jewell 58" grapple	\$42,500
2018 Doosan DX225LL, w/Pierce grapple, 1,000 hrs, like new cond.....	\$255,000
2006 Madill 800, 7,200 hrs, xlent cond.....	\$125,000
2006 Link-Belt 290x2, w/two HL-25 Pullmaster winches & grapple.....	POR
2015 Link-Belt 290x2, w/grapple, 6,500 hrs, xlent cond.....	\$260,000
2014 Link-Belt 290x2, w/Jewell 63" grapple, 10,500 hrs, new u/c, very nice loader	\$210,000
2012 Kobelco SK 350LL, w/Jewell grapple, new pump, good uc, 8000 hrs.....	\$120,000
2003 JD 270, w/Pierce grapple, recent repairs	\$45,000

DELIMBERS

2010 JD 2954D, w/2010 624C, recent motor, boomed lined bored & bushed, new rolls, idlers	\$180,000
2016 JD 2954D LL, w/2016 South Star QS 600, 4,600 hrs	\$457,000
2014 JD 3754D, w/2006 Waratah 624 Super, rear entry cab, 9,000 hrs on carrier ..	\$280,000
2007 JD 2554, w/Waratah 624 Super, 12,500 hrs, recent motor, pumps, good u/c, head is in good cond.....	\$129,500
2013 Link-Belt 290X2 LL, w/2013 Waratah 623C, 10,000 hrs, very good cond	\$260,000
2011 Link-Belt 290X2, w/2011 Waratah 623C, 11,000 hrs, road builder front.....	\$185,000
2018 Doosan DX300LL, w/Pierce GP head, only 700 hrs on machine	POR
2015 Doosan DX300LL, w/Waratah 624 Super, 8000 hrs on head, 6500 hrs on DX300, nice cond.....	\$270,000
2005 Waratah 624 Super, w/color screen, controls & hyd valve, recent wheel, bushing xlent cond.....	\$40,000
1996 Timbco 445, w/Waratah HTH 620, buncher boom	\$25,000
1996 Valmet 500T, w/Valmet head and squirt boom	\$25,000
1998 Timber Jack 1270B, w/TJ 762 head, good rubber, w/track chains and lots of spare parts for head ..	\$35,000
2004 Timberpro TB620 E, w/LogMax 7000, 12,000 hrs, good rubber	\$140,000
2003 Link-Belt 240 LX, w/Pierce 3348, good u/c 3/4 top saw & butt saw, w/butt plate	\$45,000
2013 Cat 324DFM, w/DM 4550, xlent cond, 9,700 hrs, very nice limber.....	POR
2004 JD 2554, w/DM 4400, good running delimber, 18,800 hrs	\$65,000

ROAD BUILDERS

2006 Gradall XL4100, w/buckets, 41,000 miles	\$57,500
2016 Cat 568, w/new pin grabber, w/36" digging & clean up buckets & thumb new 1,870 hrs, like new cond	POR
2007 Case CX 330, w/new pin grabber, bucket & thumb, new paint, 7000 hrs	\$75,000
2000 Kobelco SK290, w/thumb and 2 buckets	\$75,000

BUNCHERS

2012 Tigercat L870C, Tigercat 5702 350 rotation saw, 11,500 hrs.....	\$180,000
2008 Madill T2250C, Madill 2702 360 head, rblt Cummins, rads, new disc, new rolls, 14,500 hrs	\$160,000

1997 Madill 3200B, w/29" Rotosaw, recent complete rebuild.....	\$75,000
2013 Cat 522B, w/Cat 23" hot saw, good u/c, tight machine, recent motor & new pump, 9,200 hrs	\$250,000
2006 Prentice 1190T, w/Quadco 22" 360 rotation, Cummins power, new u/c, 6500 hrs	\$105,000
2016 JD 909MH, w/SouthStar FD 750 felling saw, 3,400 hrs, xlent machine	\$455,000
2016 JD 859M, w/JD 22" saw, 5,100 hrs, very nice cond	\$320,000
2011 Valmet 450 FXL, w/Quadco 22" 360 rotation head, new u/c, good pins & bushings & new pumps, 11,000 hrs	\$210,000

SKIDDERS, DOZERS & GRADERS

2010 JD 748H, bunching grapple, dual fctn boom, rears 90%, front 30%, 1 set chains, 6000 hrs.....	\$95,000
2006 Cat 545C, w/dual fctn boom, w/chains, recent motor & diffs, good rubber & chains, 17,000 hrs	\$70,000
2003 Cat 535B, w/dual fctn boom, w/chains, decent rubber	\$50,000
2001 Cat 535B, w/dual fctn boom, w/chains	\$32,500
2005 Cat 525B, single fntc boom, rblt trans & motor, good rubber & chains.....	\$55,000
1980 Mountain Logger ML 150, w/winch, good rubber, recent rblt trans	\$18,000
2000 Cat 527, w/Esco swing boom, 7 roller, AC, rblt motor & torque, nice track skidder	\$149,500
1994 Cat D5H TSK, w/fixed boom, sorting grapple, recent uc & rblt motor, 18,500 hrs.....	\$75,000
Cat D6D, w/winch, angle dozer, 90% U/C	\$35,000
1990 Case 1450B, good u/c, winch/ w/arch 7000 hrs/ nice dozer	\$35,000

YARDERS & SWING YARDERS

Washington 78SL, 3 guyline, rblt Detroit 6V71T power, good u/c, nice cond, run all logging systems	\$107,000
Diamond D210, rblt Cummins, low hrs on trans, new bearings in drum set, boom & gantry, good lines	\$275,000
2006 Link-Belt 290X2, w/two HL-25 Pullmaster winches, w/tong tosser & grapple, 16,500 hrs	POR
1993 Cat 330A, w/two HL-25 Pullmaster winches & grapple.....	\$135,000
Skagit 737, trl mount, Cummins 855, rblt, heavy duty 7 guyline tube, Boman 7900 avl., xlent cond.	\$200,000
1982 Madill 071, Detroit 8V71T power, 4 guyline 1 1/8 machine, big cab, water on all drums, good lines & stubs	\$90,000
West Coast Hawk, new trans, Cat power, updated cab, good condition w/Eagle car & radios	POR
T-Bird TY90, T100 HD, 8 guyline, trl mount, Cummins KTA, low hrs on lines, good rubber, xlent cond.....	\$350,000
1996 T-Bird TTY 6170, Cat power, 5 guyline, nice yarder	\$585,000
1991 T-Bird TTY 70, Cat power, 5 guyline	\$475,000
T-Bird TTY 70, Detroit 60 Series, Allison CTL60614 trans, 4 jacks, 24' frame, line load meter, good lines, xlent	POR
T-Bird TTY 70, Cummins power, recent rblt, good lines.....	\$475,000
T-Bird TSY 255, Cat power, extlent cond	\$520,000
T-Bird TSY 255, Detroit 8V92T, c/w msp, good u/c, very good cond.....	POR
T-Bird TSY 6140, Cat power, 50' boom, very good cond.....	\$410,000
T-Bird TSY 155, Cummins power, c/w MSP	POR
T-Bird TSY 50, Detroit 8V71T power, good cond.....	POR

CARRIAGES

2011 Boman 7500, 2,600 hrs.....	\$50,000
2015 Super Eaglet, low hrs	\$45,000
Boman 9500, Just rebuilt	\$40,000



CUT-TO-LENGTH

Bekkevar Logging and Trucking's CTL side stays busy in western Washington. Valmet JB8903 forwarder. Today it's being run by Joe Burwash. Joe normally operates Bekkevar's new Ponsse Bear harvester. (LEFT) Bekkevar's Ponsse Scorpion with H7 head in action. The Scorpion is piloted by Ryan Clark.



Bekkevar

(Continued from Page 13)

sula. They now have two Ponsse machines, a Scorpion King and Bear along with a Valmet 890 forwarder.

"We kind of have cornered the market out here," Ole said. "We had been thinning and had stepped into it. It's low-impact and it looks good."

Ole said that getting into Ponsse was a good choice as the salespeople were both knowledgeable and helpful when it came to the machines. The demand for cut-to-length is so great for the company they are constantly busy.

On the Scorpion King is Crew Manager Ryan Clark, while Joe Burwash runs the Bear and brother Eli Bekkevar runs the Valmet 890.

"It's meant to be. I love my job and enjoy the aspect of wildfire deprecation and forest stand enhancement," Eli Bekkevar said. Running the Doosan 225 loader is Joe Hickie.

"We've really taken a liking to the cut-to-length," Ole said. "It's low-impact and it's rewarding to see how it looks after we're done."

The crew manager overall is Darin Moriarity while the office manager is Joy Headley. Both play a big role in helping make day to day operations more efficient.

TRUCKS

Along with Dave Bekkevar driving lowboy and moving equipment, the company also has two dump trucks for road construction and one of their own trucks driven by Alex Hanson to haul wood.

They end up sending trucks down to Vancouver and up to Mt. Vernon.

Bekkevar Logging and Trucking enjoys doing sort sales its a package deal for harvesting, road building and so they can set the trucking rate and help out their log truckers. They have a group of about 6-8 core log truckers that are independent contractors that keep their logs flowing.

MAINTENANCE

Nelson Bekkevar and Colton

Bartlett keep the company running with their maintenance of machines. They work day and night, just whatever it takes to keep the operation running.

Oldest Bekkevar son Nelson learned his wrenching skills from his grandfather, uncle and father and handles much of the company maintenance.

"He has a very strong sense of order in his own thinking," Dave Bekkevar said in 2010, adding that it fits well with a strong maintenance and repair regime.

"We have a lot of equipment with higher hours," Ole said. "We take good care of our equipment and try to make it look like new. My dad always taught us to clean, grease and hand wash them."

Ole calls his older brother a whiz kid when it comes to machinery. They can do almost everything in house when it comes to machines except for the biggest of projects.

"When it comes to the hydraulic pumps and motors we'll

pull them and take them to Hydraulic Industries in Kent," Dave said in 2010. "Or some stuff we know we can get here at Far West Machine and Sunset Wire and Rope. They have hydraulic shops in Port Angeles. And Port Angeles Machine in Port Angeles is an excellent machine shop. Those guys are good. There isn't anything Randy and Steve can't build. It's an old machine shop, but those guys are really sharp and really good."

Ole admits that his dad Dave may have retired from logging altogether if his boys weren't involved in it, but he still hauls around machinery and gives his advice on jobs.

"He's happy to work with us and gets along with us," Ole said.

Logging is what the Bekkevars grew up in and it's what they enjoy doing. They believe in the sustainability of logging and said that through the years logging and taking over the company, it's certainly been a journey.

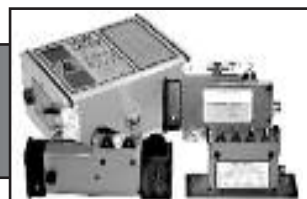


ROTHENBUHLER ENGINEERING

HOME OF THE *Talkie Tooter*

MARK III WHISTLE CONTROL

now in the 72 MHz band, get away from congested frequencies with a proven design



CARRIAGE CONTROLS

rugged radios that can control most manufacturer's carriage from the ground or the yarder

**Rugged, Durable,
Industrial Radio
Equipment since 1946!**

P.O. Box 708, 524 Rhodes Rd
Sedro-Woolley, WA 98284-0708
Telephone 360-856-0836
www.talkietooter.com

USED PARTS FOR

CONSTRUCTION & LOGGING MACHINERY

Crawlers, Loaders, Trenchers, Excavators,
Backhoes, Skidders, Skid-Steers,
Engines and Transmissions

"Rely on our Experience - Est. 1967"



1-800-626-6046

**Schaefer
Enterprises**

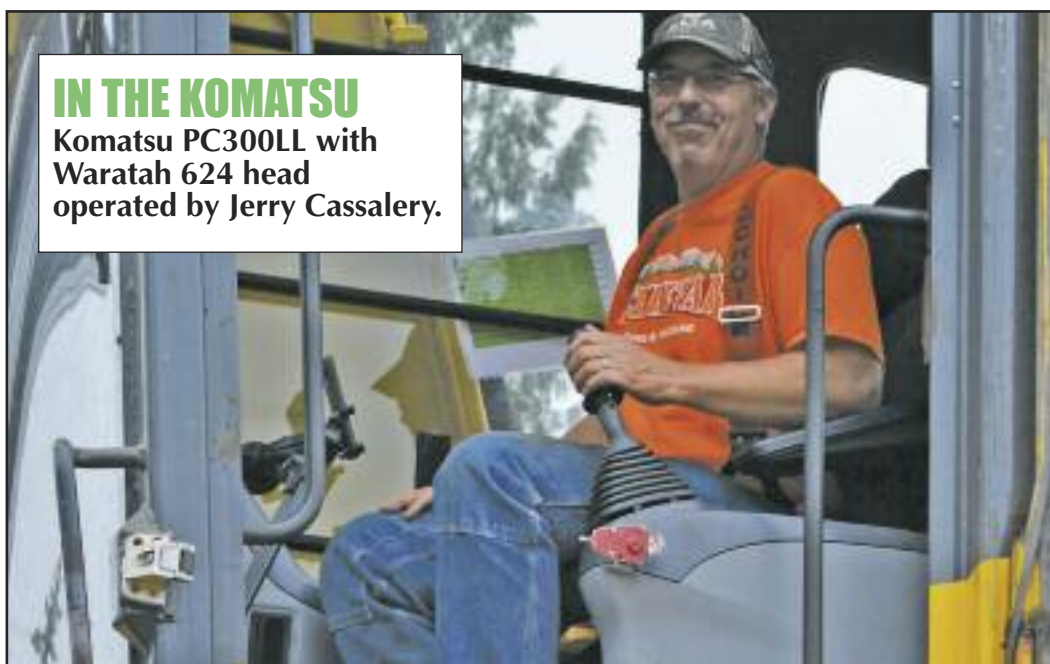
4535 St. Rt. 3 N. • P. O. Box 136, Wolf Lake, IL
www.sewlparts.com - parts@sewlparts.com

Most Major Credit Cards Accepted



JOE HICKLE

Joe Hickle runs the Doosan DX225 loader for Bekkevar.



IN THE KOMATSU

Komatsu PC300LL with Waratah 624 head operated by Jerry Cassalery.



IN THE HITACHI

In the Hitachi 250 (above left) loading trucks or keeping the landing organized is Alan LaGambinay.



TRIAD MACHINERY

Portland	Eugene	Prineville	Seattle	Spokane	Mt. Vernon
800.221.8512	800.342.6780	888.662.2940	800.622.8876	800.945.9168	360.488.3948

MOVE WOOD

LOG-CHAMP

YARDER



MAKING OUR CUSTOMERS MORE COMPETITIVE

EQUIPMENT DECAL SETS

*Replacement Decals for your:
Forestry, Construction, Mining
Ag & Industrial Equipment.*

Prompt ♦ Knowledgeable ♦ Reliable

www.QuipCal.com

Equipment & Truck Fleet Graphics
Your Logo on your Equipment

☎ or ✉ for a prompt quote

info@CustomServicesCompany.com

215-536-5339



As We See It....

New Approach Needed for Federal Forest Management

By Mark Turner

I think it is high time that we had some serious discussions in this country, about how our federal forests are being managed. For far too long, environmentalists have been the ones setting the agenda, with very poor results. For over 20 years now, the most common way of dealing with issues on our federal forests, has been to do nothing. Now, that might have been all fine and dandy, 300 years ago, when there were hardly any people living here. However, with millions of people living and working near our federal forests, it's not really a viable option anymore.

About a year and a half ago, I was in Southern Colorado. There, I had a chance to visit one of the few remaining mill owners/loggers. He showed me how they were removing dead and dying trees off private lands, to improve forest health. He also explained how the bug infestations got started in that area. He said that he was at a meeting, many years earlier, about addressing bug infestations that had gotten started on Forest Service land. He told me that, at that meeting, a well-known biologist told the Forest Service that, "if they didn't get the bug infestation under control then, that it was going to just keep spreading". You can probably imagine what the Forest Service's response was. They responded by doing nothing. So, subsequently, the infestations got worse and started to spread to adjacent private lands. This mill owner convinced me to drive up into the forest service ground and see for myself, what the conditions were like. The contrast was very pronounced. The surrounding private forest lands were reasonably healthy, however, the federal forests were in very poor health.

The Forest Service, however, is not the only Federal agency that are poor stewards of our public forests. Here in Oregon, the Bureau of Land Management is responsible for a considerable land base. These are

called the "O & C Lands". In 1937, there was an Act of Congress that set these lands aside for, primarily timber production. Now, I always thought that an Act of Congress was something pretty important. Something that you couldn't just ignore? However, over the years, environmental types have managed to chip away at timber harvest levels, on these O & C Lands. So much so, that the BLM has adopted the same type of "hands off approach" that the Forest Service uses, for managing much of their land base. To the point now, that, I believe, that they are no longer even coming close to fulfilling their mandate through the O & C Act. Subsequently, these forests are becoming just as unhealthy and fire prone as those managed by the Forest Service.

It doesn't have to be this way. I think we can look to other parts of the world that have learned how to manage their forests for the long run. Last year, at The American Loggers Council annual meeting, Ken Swanstrom, a former president of the ALC, gave a very fine presentation of a tour he had taken through the forests of Southern Germany. For me, it was rather eye opening. He said that during his tour, he saw some of the most beautiful forests he had ever seen. And the entire time he was there, he only saw three dead trees. There, they have been managing their forests for over 500 years. Foresters there explained that absolutely nothing was off limits to logging. They also explained how important of a tool logging was for forest health. His tour included a visit to the City of Munich's watershed. One of the largest untreated water systems in the world. The forester there told him that "well, everyone knows that if you want healthy forests and clean water, then, of course you are going to log". I wish more people in this country could understand that. Ken also told us that this part of Southern Germany produces the equivalent of 7 billion board feet of forest products annually. Contrast that with the Forest Ser-

vice, in this country, who struggle to produce 3 billion board feet from all of their federal forests, throughout the entire United States. In fact, I was very surprised to learn that the country of Germany, because of their aggressive forest management policies, produces the equivalent of 21 billion board feet of forest products annually. While the entire United States produces 40 billion board feet. That, despite a land base that is 28 times larger.

Clearly, when it comes to forest management, we have a lot of room for improvement. One of the goals of the American Loggers Council, is to advocate for better management of our federal forests. I believe that the lack of management of our public forests is not only costing us in lost resources. But is also bad for the environment. In my opinion,

the biggest losers from our failing Federal Forest Management Policies, are the forests themselves.

Mark Turner is the President of the American Loggers Council. Mark and his brother Greg operates Turner Logging out of Banks, Ore. Mark is an active leader with the Associated Oregon Loggers.

The American Loggers Council is a 501 (c)(6) not for profit trade organization representing professional timber harvesters in 32 states across the United States. If you would like to learn more about the ALC, please visit their web site at www.amloggers.com, or contact their office at 409-625-0206.

INVENTORY REDUCTION



2007 Timbco 445EXL,
hotsaw,
engine, hyd.
pumps, U/C
all less than
250 hrs,
great
condition,
7,000 hrs. on
frame
\$150,000



2000 JD 230 w/Pierce 3345
delimber, 16,300 hrs.,
engine & U/C have less than
2,000 hrs**\$40,000 OBO**



2008 JD 2554, w/Pierce 3348
delimber, low hrs. on reman
engine, recent U/C, good cond.....
.....**\$100,000**



1981 850JD, Semi-U blade,
winch**\$25,000**

Call Tom
208-877-1588
Deary, Idaho



Summary Judgment....

Trump Pardons The Hammonds But Work Remains

by William Perry Pendley

Congratulations to President Donald Trump for heeding my Fox News call of May 19, and those of other westerners, farmers and ranchers, to pardon the Hammonds. Neither he, nor his appointees, nor the bureaucracy, however, should rest on their laurels. There is much personal animus, agency vendettas, and prosecutorial abuses to undo and many innocents to be made whole. One of those victims is Pastor Victor Fuentes of Nevada.

In its congratulatory commentary, the Wall Street Journal reported that among the other efforts of the Hammonds' neighbor—the U.S. Fish and Wildlife Service—to “drive out [the Hammonds and other ranchers]” was that it “mismanaged water to let ranchlands flood.” The Hammonds are not the only westerners wronged by “theft by flooding.” So, too, was Pastor Fuentes, who fled Castro's Cuba and whose church (Ministerio Roca Solida Iglesia Cristiana), a small, mostly Spanish-speaking congregation, built a 40-acre refuge in the Nevada desert for troubled youth.

Unfortunately, like the Hammonds' ranch, Pastor Fuentes' church's land is surrounded by a Fish and Wildlife Service refuge. Its officials, lawyers, and high-priced hired guns want him gone. So, they diverted a stream that once flowed tranquilly across his land, co-opted his Nevada-approved water rights, and channeled his water onto federal land. Incompetent as they are criminal, their diversion failed, and four times over 5½ years, water overflowed its new banks and cascaded across the church's land. It destroyed property, washed away fertile soil, and created gullied and dusty badland where there was once a beautiful oasis.

Represented by Mountain States Legal Foundation, Pastor Fuentes and his church are in federal court—the U.S. Court of Federal Claims—in Washington, D.C., arguing that the

government seized their property without “just compensation.” Days ago, discovery closed and Mountain States Legal Foundation and Pastor Fuentes are now preparing for a full-blown tri-

al, although it is expected the agency will assert there are no facts in dispute and they should win instantly. In doing so they will rely—as we discovered in recent depositions of agency's witnesses—on “experts” and their reports, which cost hundreds of thousands of taxpayers' dollars, to justify the government's theft of water and intentional flooding.

For those Americans who were shocked by the sneering, smirking, stupefying preening of FBI agent Peter Strzok in his appearance before Congress, meet Tim Mayer, the unlicensed “Supervisory Hydrologist” at the Fish and Wildlife Service in Portland, Oregon. Mayer is the unbridled bureaucrat who greenlighted the scheme to steal the water and flood a church camp. Mayer and his agency intentionally turned Pastor Fuentes' church camp into a living hell, just to force these Christians off their property. Though Mayer is neither a lawyer nor a historian, he admitted he routinely provides legal advice and counseled the agency that it was lawful to steal the church's water.

Another government “expert” brags unabashedly that he “majored in science in high school,” but admitted he lacks the expertise to say whether

the agency's water diversion project was constructed negligently. A third deponent—of five woefully uninformed but very well paid (\$440 an hour for one) experts—the meteorologist, opined the damage was the result of a “one-hundred-year flood,” but could not explain why four such floods in 5½ years did not invalidate his theory. Federal lawyers should refuse to put these so-called experts on the stand at trial. Instead, they will fight zealously to destroy the hopes, dreams, and years of sacrifice of Pastor Fuentes, despite that a federal agency made a moon-scape out of his church's land. If past is prologue, and federal courts being, after all, federal courts, the Fish and Wildlife Service may very well succeed.

President Trump said wonderful things about beleaguered westerners in pardoning the Hammonds, but those seeking to grind Pastor Fuentes into the dust did not get the message. President Trump needs to Tweet Secretary Zinke before it is too late.

Mr. Pendley, a Wyoming attorney, is President and Chief Legal Officer of Mountain States Legal Foundation and a regular columnist in Loggers World.



Call (800) 422-0074 or join
online at www.loggers.com

Membership Highlights...

- Master Logger Program (exceeds SFI logger training requirements)
- Monthly Springboard Magazine
- First aid/cpr and pilot car training
- Log A Load For Kids® - giving campaign for Children's Hospitals
- WCLA Insurance Agency - top coverage for the timber industry
- Employee benefits programs through WCLA's benefits partner: Kibble & Prentice
- WCLA Claims Management Program - providing the benefit of savings on L & I premium costs, improved safety standards and reduced claims costs

I BUY LOG SKIDDERS



- Dozers
- Loaders
- Excavators

1-503-545-0007



PHIL BREITHAUPT

Phil Breithaupt running the Volvo Excavator and talking with Ole.

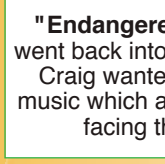


Logging Music recently re-released and re-mastered!



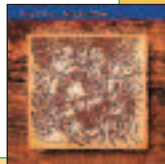
The Snag Fallers Ball
\$15.00
Plus Shipping

"The Snag Fallers Ball" - A light hearted collection of original songs about logging in Oregon and Alaska, and was first released in 1988. Craig wrote nine of the eleven songs on the album and co-authored two others with Don Beck, a long time friend, logger and musician also from the small town of Mapleton, Oregon.



"Endangered Species" - In 1989 Craig & Terry went back into the studio to record their next album. Craig wanted to share his point of view through music which addressed some of the political issues facing the logging industry at that time.

Endangered Species
\$15.00
Plus Shipping



You Hold Me Still
\$15.00
Plus Shipping

"You Hold Me Still" - In 1992 after many requests to record a gospel album they again returned to the studio and recorded eleven original songs. Two of the songs are co-written - one with Don Beck and one with Rick Barrows.



Songs from the Siuslaw
\$20.00
Plus Shipping

"Songs from the Siuslaw" (pronounced SY-u-slaw) is a heartfelt tribute to the hard working men & women in the logging industry and dedicated to the many men who have lost their lives doing one of the most dangerous and unappreciated jobs in the world. This a double CD set that was recorded live in Florence, Oregon in 1999 at the Florence Events Center. The first CD is saw-shaped and will play in top-loading and tray-loading CD players ONLY. It comes with a 20-page booklet filled with humorous lyrics and old logging photos.

ALL 3 CD'S \$40.00
Snag Fallers Ball, Endangered Species & You Hold Me Still
Plus Shipping



Order on their website for fastest service:

www.ctmusicoregon.com

Or if you prefer not to order on-line you can call them at: 541-268-6910

**Just a few tickets left for the
Craig & Terry "Live at Camp 18" Concert
Don't Wait...CALL TODAY!**



September 22 at Camp 18 in Elsie, Oregon

**Tickets available exclusively through
LOGGERS WORLD
Call 800-462-8283**

**All Tickets must be Pre-Paid
No Tickets will be sold at the door**

The concert will be September 22, from 7 to 9 pm. Tickets are \$20 per person, pre-paid through Loggers World. **Less than 40 tickets are left, no tickets will be sold at the door.** Call Loggers World 800-462-8283 and use your credit card to buy your tickets (other payment arrangements could be made if time permits). Please leave a message if we aren't able to answer your call in person.

Call LOGGERS WORLD 800-462-8283 for more information and ticket availability.



ON THE JOB

Dan Belgrade operates the Madill 2200 buncher with Quadco head (LEFT). Rene Priest drives log truck for Alaska Pacific. We caught up with her when she was tightening up her wrappers on the way out to the mill (RIGHT).

SUBSCRIBE TODAY! LOGGERS WORLD

12 Issues – 1 Year Subscription

\$25⁰⁰

WA Residents pay
\$27.40 w/tax
Inside U.S.A.



Offer expires
December 31, 2018

LOGGERS WORLD

○ \$25.00 for 1-Year Subscription ○ \$50.00 for 2-Year Subscription
WASHINGTON RESIDENTS PAY \$27.40 & \$54.80 w/SALES TAX

NAME:

ADDRESS:

CITY: STATE: ZIP:

PHONE: ()

(ALLOW 5 WEEKS FOR DELIVERY OF FIRST ISSUE)

Send your check or Money order to:
LOGGERS WORLD LLC
P. O. Box 1631
CHEHALIS, WA 98532

LOGGERS WORLD Suspenders are Back!!



Washington Residents pay
\$20 including Sales Tax
Plus \$7.50 shipping & handling
Offer expires December 31, 2018

Show the world
that you support
**LOGGERS WORLD
MAGAZINE**

by wearing
Loggers World Suspenders

Loggers World Suspenders are now available in traditional red (2" wide) with black lettering. You can order them with leather ends or clips and we also have the buttons. Just use the handy form below.

**Only
\$18.50
per pair**

Name _____ Phone _____

Mailing Address _____ City _____ State _____ Zip _____

#__46" Leather #__46" Clip #__ @ \$18.50 = \$

#__50" Leather #__50" Clip WA Sales Tax #__ @ \$1.50 = \$

#__54" Leather #__54" Clip S & H @ \$7.50 (\$13.00/ 2 or more pr.) = \$

Bucksaw Buttons - \$3.00 per package of 8 Buttons @ \$3.00 = \$

Send your check or Money order to:

LOGGERS WORLD LLC, P. O. Box 1631, CHEHALIS, WA 98532
Credit card sales call: **800-462-8283**

Total \$ _____

(Continued from Page 7)

do an equally good job of running Finley Hays, Inc.

As I see it, Finley Hays, Inc. has some potential assets. They are, Time (the wise usage of time.) Energy (the wise use of energy.) Concentration (being able to concentrate upon one thing at a time.) Know-How (how to use the knowledge I have and can get.) Imagination (a vision of what is needed and how to get it.) And Spiritual (who I am doing all this for. I know who I am because I know whose I am.)

Of this list of assets in my life, Time, Energy, Concentration, Know-How, Imagination and Spiritual Values, I am only using about 15% of the potential. That is to say I can make 85% improvement in the way I'm spending my time, using my energy, capitalizing upon my know-how, concentrating upon what is important, using the scope of my imagination and using the power that God gives me.

If I am only using 15% of these things to do what I am doing and to get where I've got what could I do and what could I have done if I could boost that up to 20% usage? There is no limit to what I can do

except those limits I set for myself. No one but myself can hold me back.

A long time ago I decided that we were not going to try to hold on and to hope to be here when things got better. I decided that we were going to make money during the tough times, the first requisite of a company is to make a profit, remember. That is to say we had to be better managers and deliver better service and to make it pay on the bad days as well as on the good days.

That is what we are attempting to do. We intend to make progress each and every day in our busi-

ness.

I intend to make progress in the business of Finley Hays, Inc. Actually before I can make many improvements in Loggers World Publications there first must be improvements in the personal corporation, Finley Hays, Inc.

The company usually won't improve until the boss improves. There is so much that needs the doing, so many things that I can do that the best thing right now is to shut up and get doing it.

My question to me is, "What can I do right now to move me one step closer to my goals? Closer to my own personal set of Values?"



IRONMART

TOLL FREE: 1-800-462-8283

RATES: Space available at \$25.00 per column inch. Each ad is separately boxed for prominent display of your machinery or message.



DEADLINES: by mail, 5th of month prior to publication.
Phone your order toll free 8:30-5:00 p.m. Monday-Friday Pacific Time.
Use your VISA or MasterCard



LOGGING FINANCE.COM

OUR NAME SAYS IT ALL!

- ☐ Low Rates
- ☐ Fast Approvals
- ☐ Easy Credit Application

Financing Provided By

**AMERICAN LEASING &
FINANCIAL**

800-644-1182

Forest Engineer/Logging Road Locator Wanted:

Evergreen Timber LP Afognak seeks experienced individual(s) accustomed to locating forest roads for west side logging applications (shovel and cable logging). Must have at least 5 years experience minimum and resume with demonstrable experience/references. Remote site, rotate as needed.

Send email to Keith Coulter
(afognakkfp@gmail.com)

No phone calls please.

See website:

evergreentimberlp.com

LINK-BELT 98 PARTS FOR SALE:

Good Cat motor, U/C good, boom is good, good final drive **406-291-4926**

40' to 89' (No 70' available)
flat car and box car
bottoms available for
bridges, best prices. 360-426-
8386 fehorse@basicisp.net

TIMBCO USED PARTS

445 Finals & Motors
Cat 330 & Lohmann GFT80
Stick, Tool & Leveler Cyls
Tested Rad, Poclain Swing
ALL ITEMS INSPECTED
Call Kevin 877-563-8899 or
250-565-5222

khodgins@prolenc.com

**WANTED: Bull or High Lead
Logging Block, 18" sheave or
larger** also want to buy old axes,
axe heads, spring boards, crosscut
saws and handles **Bob 360-687-
1883 or 360-608-2583**

Timber Harvesting Professionals Wanted on Afognak Island, Alaska

Excellent wages paid for
qualified processor, shovel,
road building operators and
truck drivers and yarder crew.
Also hiring entry and journey
level mechanics for shop and
field work. New management
and new attitudes as well as
machinery updates and camp
improvements.

Expect 6 days/week work
schedule.

Must provide
resume/references and
minimum 5 years experience.
Drug Tested Workplace.

Call **EVERGREEN TIMBER**
907-680-2304

See website:

evergreentimberlp.com

Sell it FAST!
in **IronMart**

Deadline for the next issue of Loggers World Magazine is September 12, 2018

EQUIPMENT FINANCING

- New & Used - No age restriction
 - No Financial Statements Needed
 - Approvals in 24 hours
 - Logging Industry Specialist
- www.cfscapital.com/forestry**
800-503-4919

ENGINES WANTED WILL PAY CASH & PICKUP

DETROIT engines 60 series,
12.7 liter DDEC III's & IV's.

CUMMINS Big

Cam 444, NT88, N14.

CUMMINS ISX non-runners.

Call or text **501-772-6005**

Cutting Contract on Afognak Island Site:

Evergreen Timber LP
Afognak is requesting bids for
multi-year cutting contract.

Must have minimum 5 years
experience and required
insurance. 150 MMBF sale(s).
Expect 35 - 40 MMBF/year +.

Contact Keith Coulter by
email at

(afognakkfp@gmail.com).
No phone calls please.

See website:

evergreentimberlp.com

100% FINANCING

New & Used Equipment
Great Rates

Seasonal Payments Available
Start-Ups Welcome

Threshold Financial

www.thresholdfinancial.net

888-280-9900

**Time to Quit - Sell or
Trade.** Heavy Equipment
parts: Allis Chalmers, Terex,
Cat, Link-Belt, John Deere,
Detroit. Old logging rigging
and tools, blocks, shackles,
saws, etc. **503-879-5440** or
deck@partsunknownusa.com

Woods Boss Wanted for Afognak Island Logging Side:

Will oversee several shovel
logging sides, yarder side, and
road building as well as
cutting quality control. Prefer
forest engineering degree but
not necessary. Requires west
side experience.

Contact Keith Coulter at
afognakkfp@gmail.com for
details. Remote Afognak
Island, Alaska

No phone calls please.

See website:

evergreentimberlp.com

CROWLEY EQUIPMENT, INC.

(541) 688-5924 FAX: (541) 688-0704

MIKE (541) 954-7643 • ERIC (541) 206-2252 • DAN (541) 914-9222

4655 Cloudburst Way, Eugene, Oregon 97402



**2015 John Deere 2454D
Log Loader,**
W/Pierce GP head, 5,000 Hrs.,
P.O.R.



2016 Deere 909MH
w/Southstar Felling Head,
3,400 hours
P.O.R.



1996 Diamond D210
\$250,000



**1995 Thunderbird
TSY255**
Tilt Cab, Cat
Engine,
Lohmann
Finals
Eagle
Carraige,
Radios.
**Trades
Welcome!**

LOG LOADERS

- 2015 CAT 320D
- 2013 CAT 320D
- (2) 2012 CAT 320D'S
- 2013 HITACHI ZX240
- 2016 JOHN DEERE 3756
- 2016 DEERE 2954D
- 2016 JOHN DEERE 2154D
- 2015 JOHN DEERE 2454D
- 2010 JOHN DEERE 2954D
- 2008 DEERE 2554
- 2008 JOHN DEERE 2054
- 2007 DEERE 3554
- 2004 DEERE 3554
- 1993 JOHN DEERE 690E
- 2011 KOBELCO SK295
- 2006 KOBELCO SK210
- 2016 KOMATSU PC240
- 2013 LINKBELT 240X2
- 2013 LINKBELT 210X2
- 2011 LINKBELT 290X2
- 2005 LINKBELT 240LX
W/JEWELL TONG THROWER
- 1997 LINKBELT 4300Q W/(2)
PULLMASTER DRUMS
- 2000 THUNDERBIRD 1238
- 1996 THUNDERBIRD 1240
- 2015 TIGERCAT LS855C

PROCESSORS & DELIMBERS

- 2015 CAT 324D W/PIERCE
3348
- 2012 CAT 532 W/WARATAH
623C
- 2012 HITACHI ZX240 RB
W/WARATAH 623C
- 2017 JOHN DEERE 803
W/WARATAH 622C
- 2016 DEERE
2954DW/SOUTHSTAR QS605
- 2015 JOHN DEERE 2454D
W/PIERCE GP HEAD
- 2013 JOHN DEERE 2154
W/WARATAH 622C
- 2008 JOHN DEERE 2954D
W/2010 WARATAH 624C
- 2008 JOHN DEERE 2054
W/622B
- 2007 JOHN DEERE 2554
W/PIERCE 3348

PROCESSORS & DELIMBERS *Cont.*

- 2006 JOHN DEERE 2554
W/DM4550
- 2003 DEERE 370
W/WARATAH 626
- 2002 JOHN DEERE 230LC
W/DM4400
- 1990 JOHN DEERE 290
W/FABTEK
- 2008 KOBELCO SK350RB
W/624 WARATAH
- 2005 KOBELCO SK250LC RB
W/WARATAH 622B
- 2017 LINKBELT 4040
W/SOUTHSTAR 600
- 2013 LINKBELT 290X2
W/623C
- 2012 LINKBELT 290X2
W/DM4550
- 2004 LINKBELT 240LX
W/PIERCE 3348
- 2003 LINKBELT 240LX
W/DM4400
- 1997 LINKBELT 3400Q
WDM3500
- 2003 TIGERCAT L830 W/2011
WARATAH 622B

FELLER BUNCHERS

- 2016 CAT 552
- 2016 DEERE 909MH
W/SOUTHSTAR FELLING
HEAD
- 2015 JOHN DEERE 959K
- 2015 JOHN DEERE 643L
- 2009 TIGERCAT LX830C
- 2008 CAT 535C GRAPPLE,
WINCH

- 2007 CAT 535C

- 2005 TIGERCAT L870
- 2005 TIGERCAT LX830
- 2010 TIMBCO 445FXL
- 2007 TIMBCO T445EXL
- 2006 TIMBCO T425EXL
- 2003 TIMBCO T445E

SKIDDERS / DOZERS

- 2017 CAT 545D
- 2010 CAT 525C
- 2003 CAT 527

SKIDDERS / DOZERS *Cont.*

- CAT 977L
 - 2010 JOHN DEERE 848H
 - 2005 JOHN DEERE 748G3
 - 2003 JOHN DEERE 648G3
W/SWING BOOM
 - 1988 J D 550G W/RIPPERS
 - JOHN DEERE 850 W/WINCH
- ## CHIPPERS / GRINDERS
- MORBARK 30RXL
 - 1995 PETERSON 5000G
- ## YARDERS
- CHRISTY HD YARDER
 - DIAMOND D210
 - KOLLER K702 ON TRACKS
 - (2) KOLLER K602'S
 - (2) MADILL 071
 - MADILL 70'
 - (2) SKAGIT 739
 - SKAGIT 737
 - (2) THUNDERBIRD 6140
 - THUNDERBIRD TMY50
 - THUNDERBIRD TSY-6240
 - THUNDERBIRD TSY255
 - THUNDERBIRD TY90
 - THUNDERBIRD TY-40
 - 1995 THUNDERBIRD TTY70

EXCAVATORS

- 2005 CAT 312CL
 - 2012 HITACHI 290
 - 1996 HITACHI EX270
 - 2014 JOHN DEERE 2454D RB
 - 2006 LINKBELT 370LX RB
- ## MISCELLANEOUS
- 2012 CAT 924K
 - 2010 CAT 330D W/TRACTIO-
LINE WINCH ASSIST
 - 2007 CAT 140H
 - CAT 977L

- EXC. HEEL/GRAPPLE

- 2006 KOMATSU WA450 -L5
- MEDFORD LOG FORKS
- 2006 VALMET 890

PARTING OUT

- 2005 HITACHI ZX250 LL
- LINKBELT 210LX BOOM
- THUNDERBIRD TSY-155



2016 John Deere 2154D,
3,300 Hours
\$200,000



**2016 Deere 2954D Log
Loader**
w/4,233 hours
P.O.R.



2016 Ponsse Buffalo
4,000 hours
P.O.R.



2016 Komatsu PC240
4,700 hours
P.O.R.

www.crowleyequipment.com



2005 John Deere 748G3,
7,500 Hrs.
\$80,000



2005 Tigercat L830,
New U/C, 360° Tigercat Hotsaw
P.O.R.



**2013
Link-Belt
290X2
With
Waratah
623C**

11,800
Hours
P.O.R.



2009 Tigercat LX830C
Newer Undercarriage, 9,664 Hrs.
P.O.R.



**(2) 2012 Cat 320D
Log Loaders**
P.O.R.

SHOW AND SELL

Send your Black and White or Color photo and a description of what you are selling (try to keep it within 20 words - 1 item per ad - *No Business Names Allowed*) and we'll publish it in Show & Sell for just \$125.00. Mail (or email to logworld@aol.com) your information to Loggers World LLC, P.O. Box 1631, Chehalis, WA 98532. Deadline is 5th of the month preceeding publication.

**6140 Thunderbird
Swing Yarder,**
all lines & rigging,
whistles, new gear
and bearings 18 mos
ago, Super Eaglet
Carriage ~~\$332,000~~
**New Years
Special
\$312,000**
(360) 470-1535 x



2006 Kenworth Mechanic Shop/Lube Truck.
C7 CAT engine (EGR, no DEF). 5-speed automatic
Allison Transmission. 3,258 engine hours. 64,220
original miles. 5000 lb IMT Crane. 302 Trailblazer
welder with low hours. Waste Oil Recovery System:
(4) 50 gallon tanks for oil, antifreeze, hydraulic and
waste oils. New drive and steer tires. **\$89,900**
Call Roger at 360-581-8325 o



**Skagit GT3
w/ ACME 24
carriage, 50'
tower,
\$220,000**
**Contact Scott
360-606-0729** o



2005 Cat Delimber PTD2858, 16,000,hrs,
well cared for good history, ready to work
\$70,000 Call Shane 530-945-1586 Ready to
work and measure logs o

ADVERTISE
YOUR ITEM IN THIS SPACE
\$125⁰⁰
CALL 1-800-462-8283
SPECIAL DEAL:
Get your ad for
\$110⁰⁰ if you buy it
on our website:
www.loggersworld.com

West Coast Hawk,
60' telescoping tower
\$315,000
**Contact Scott at
360-606-0729** o



**2004 Peterbilt 378B Air Trac, 1 owner, Cat
C15, 535 HP, Lincoln Trailer & Gear, Recent
Inframe, well maintained and much more.**
\$70,000 OBO
Contact Mike 360-749-3530 • 360-225-7730 o



1992 D5H TSK, 8 roller, enclosed cab \$89,000
Call Shane 530-945-1586 o



**09 Peterbilt 388 Short / Long Logger +
Pup, Hauls 26's on truck, ISX 600 Cummins,
18sp, 46 Eatons 4.11 \$97,500.00**
503-663-0396 • 503-849-4608 o



**Rebuilt Quadco
22B 360VI S/N 827**
***Can be 24" Cut*,**
All cyls rebuilt, 500
hrs on New disc &
support plate, New
Teeth. New Butt
Plate, New Brgs &
seals in Drive Shaft,
new Brgs in Rotate
pinions. Any cracks
gouged & welded.
**Call Kevin
250-565-5222** o



**04 KW T800, 475 CAT, 18 , 46's , 01 Alpine
long logger rigged to pull pup. Vulcan Scales.**
\$69,500 (503)849-5608 o



**2006 Timbco 445EXL, Quadco 360 hot saw,
10,564 hrs \$143 500 Call Shane 530-945-
1586 machines at Cat in Redding ready for
inspection** o

COMING EVENTS

SEPTEMBER

1-2



HIGH COUNTRY LOG SHOW

RUNJE FIELD
ROSLYN, WASHINGTON
FOR INFORMATION: (509) 260-0403

6-8



GREAT LAKES LOGGING & HEAVY EQUIPMENT EXPO

SUNNYVIEW EXPO CENTER,
OSHKOSH, WI
FOR INFORMATION: (715) 282-5828

13-15



PACIFIC LOGGING CONGRESS LIVE IN THE WOODS SHOW

CORVALLIS, OREGON
FOR INFORMATION: (360) 832-1745

15

SAGINAW DAYS LOGGER'S SHOW

BROOKLYN, WASHINGTON
FOR INFORMATION: (360) 532-5846 OR 253-232-2503

OCTOBER

11-13



AMERICAN LOGGERS COUNCIL

24TH ANNUAL MEETING
SHILO INN SUITES & HOTEL
SEASIDE, OREGON
FOR INFORMATION: (409) 625-0206

17-9



61ST ANNUAL ALASKA FORESTRY ASSOC. CONVENTION

HOTEL CAPTIAN COOK
ANCHORAGE, ALASKA
FOR INFORMATION: (907) 225-6114

SEND EVENT NOTICES TO: Publisher, Loggers World Magazine, P. O. Box 1631, Chehalis, WA 98532-8425. Please include your event's symbol. Items used at discretion of the publisher.

Deadline for October 2018 issue: SEPTEMBER 12th

Advertiser's Index

ACME MANUFACTURING	16	LOCK & LUBE	13
APPELO ARCHIVE CENTER.....	12	LOGGERS WORLD SUBSCRIPTION	25
CASCADE TRADER	5	MADSEN'S SHOP & SUPPLY, INC.....	6
CASHMAN EQUIPMENT	3	MARK FAIRCHILD	10
CATERPILLAR	3	MPI EQUIPMENT	9
CC HEAVY EQUIPMENT INC.	7	N. C. MACHINERY Co	3
CONSTRUCTION EQUIPMENT Co.	17	NORTH AMERICA SUPPLY	22
COWLITZ RIVER RIGGING	14	OLIVER HAMMER CLOTHES SHOP.....	7
CROWLEY EQUIPMENT INC	27	PACIFIC FIBRE PRODUCTS, INC.	7
CT MUSIC.....	24	PERSONS ENTERPRISES ..	23
CUSTOM SERVICES COMPANY	21	PETERSON	3
DEAN'S LOGGING LLC ..	22	PIERCE PACIFIC MFG., INC.	15
DUKE'S EQUIPMENT	18	PONSSE N. AMERICA.....	11
EAGLE CARRIAGE & MACHINE INC.....	14	ROTHENBUHLER ENGINEERING.....	20
FEENAUGHTY MACHINERY Co	13	SCHAEFER ENTERPRISES	20
FRALEY TRACTOR, INC	8	SHOW & SELL.....	28, 29
FULL CIRCLE FINANCE.....	6	TRIAD MACHINERY.....	21
GEM.....	15	TRIPLE T EQUIPMENT ...	15
HIGH CASCADES AGENCY	18	WARATAH FORESTRY ATTACHMENTS.....	2
HOLT OF CALIFORNIA.....	3	WASHINGTON CONTRACT LOGGERS ASSOC.....	23
IRONMART	26	WESTERN STATES	3
L&L EQUIPMENT	10	ZENDER EQUIPMENT	19

SHOW AND SELL

Send your Black and White or Color photo and a description of what you are selling (try to keep it within 20 words - 1 item per ad - **No Business Names Allowed**) and we'll publish it in Show & Sell for just \$125.00. Mail (or email to logworld@aol.com) your information to Loggers World LLC, P.O. Box 1631, Chehalis, WA 98532. Deadline is 5th of the month preceeding publication.



Timbco 445EXL, Pierce 22 inch hot saw
\$125,000 OBO Call Shane 530-945-1586



1989 Cat Wheel Loader with forks or bucket,
new tires \$63,500 nice loader
Call Shane 530-945-1586



2002 Madill/Thunderbird 1236DL with
denharco stroker, new eng and rad last season
\$65,000 Call Shane 530-945-1586