

# LOG TRUCKER

VOLUME 45 NUMBER 10

To Advertise Call (800) 462-8283

OCTOBER 2018

## TRUCKS OF THE MORTON LOGGERS JUBILEE PARADE





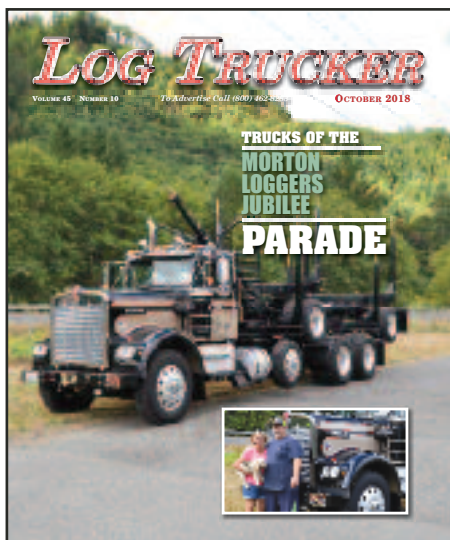
# FEATURED IN THIS MONTH'S ISSUE

## MORTON LOGGERS JUBILEE

**M**orton is a small town of 1,126 in east Lewis County that was officially incorporated in 1913. The local economy runs off logging and was once known as the “tie mill capital of the world” in the 1950s. The western Washington town hosts the Loggers Jubilee every year. The event **has been going strong for 76 years** and started with log bucking happening on a vacant lot by Main Street. An arena site began construction in 1952 and now the Morton Logger’s Jubilee is known as the “**Granddaddy of Logging Shows.**” People enjoy the Main Street parade, **lawnmower races** and of course, the logging show which brings the best loggers from miles around.

## MORTON WASHINGTON

## IN THIS ISSUE



**FRONT PAGE:** Vonda and Mike Hadaller pose with furry friend Kiah in front of their clean and shiny 1975 Kenworth with a 350 Cummins and a 1969 Pierce trailer. Mike said this truck is one of the old Mann trucks.

See Page 4 for the start of the photo gallery by Kevin Core...

**4.** A JUBILEE OF TRUCKS  
MORTON LOGGING SHOW

**17.** BLAST FROM THE PAST

**19.** ADVERTISERS INDEX  
WE'VE GOT WHAT YOU WANT

## LIKE WHAT YOU SEE IN LOG TRUCKER?

Buy a Subscription so you don't miss a single issue:  
**[www.loggersworld.com](http://www.loggersworld.com)**

## LOG TRUCKER

Founded in 1975 by Finley Hays

Published by

LOGGERS WORLD LLC

Phone **(360) 262-3376**

PUBLISHERS.....Kevin & Nancy Core  
EDITORS EMERITI.....Finley Hays, Mike Crouse  
EDITOR/WRITER.....Brandon Hansen  
ADVERTISING.....Kevin Core  
OFFICE MANAGER.....Nancy Core

POSTMASTER: Send address changes to:

LOGGERS WORLD LLC,  
P. O. Box 1631, Chehalis, WA 98532-8425

E-Mail: [logworld@aol.com](mailto:logworld@aol.com)

SUBSCRIPTION RATE (In U.S.A.):  
\$25.00 per year; Two years for \$50.00

LOGGERS WORLD LLC cannot and does not assume responsibility for the contents of any advertising in Loggers World. The representations made by advertising is the responsibility of the advertiser and not Loggers World. Loggers World does not knowingly accept advertising that is false or misleading. The limit of Loggers World liability in case of a mistake made in advertising copy by Loggers World will be the charge of the actual space containing the error or less for that particular advertisement





## GENERAL TRAILER Delivering More!



### HOWLING OCTOBER PARTS SPECIALS

#### ★ GENERAL TRAILER ★

*Building the Best...Repairing the Rest.*

**RANCO** Your Dealer for Ranco and Travis Trailers **Travis**



**Used Ranco  
34-ft, 26-yd  
End Dump**

**Call for a Quote**

When you need equipment to deliver more, look to the GENERAL and this used Ranco End Dump for equipment built to efficiently deliver the big loads.



**Thank You,  
Kevin Hoffenbredl!**

**Purchased New  
GENERAL Third Axle Kit**

Kevin Hoffenbredl Trucking, out of Willamina, OR is delivering more these days after purchasing his new Third Axle Kit from the GENERAL. Thanks, Kevin!



**Thank You,  
Pape KW!**

**Purchased New  
GENERAL Long Logger**

Buying quality equipment and delivering more is a reason why Pape KW is a successful operation and why the Coburg, OR company purchased this new 2018 GENERAL Long Logger. Thanks, Pape KW!

**Call the General's Headquarters.  
1-800-452-9532**

#### Ranco Anvil Rock Bodies 15 ft and 16 ft



**In Stock Call for a Quote**

To stay in business, you need rugged equipment you can count on to deliver more, like these new Ranco 15 and 16 ft Ranco Anvil Rock Bodies at the GENERAL.



**Trail King TK20  
Tandem Axle Tilt Deck Trailer**

**19 ft with 4 ft Beavertail  
Call for a Quote**

Make the right decision for your business and buy this Trail King TK20 Tandem Axle Tilt Deck Trailer, equipment that delivers more, from the GENERAL.

#### In Stock 60/70 Flat Deck Lowboy



**Call for a Quote!**

To keep your customers happy, you need to count on trailers capable of delivering more, like this GENERAL 60/70 Ton Flat Deck Lowboy. Give the GENERAL a call today at 1-800-452-9532 to make it yours.

#### New 2018 Peerless 53 ft 4-Axle Drop Center Chip Vans in Stock



#### New in Stock



**Peerless Live  
Floor Trailers**

**Call  
Jerry  
for  
Trailers  
in Stock  
Today!**

**Call Jerry Blair in Oregon City 1-800-452-9683**

#### Spray Guard

55078073-2 6' Flexible 7" Filament Side-Mount	\$29.95 Ea
55078073-0 6' Flexible 11" Filament Side-Mount	\$32.50 Ea
55078073-4 6' Flexible 11" Filament Under-Mount	\$32.50 Ea
5507-1040-2 4' Runner 11" Filament	\$11.70 Ea

**Schlegel**

7004 Chrome Combo Winch Bar	\$14.50 Ea
7005 Painted Combo Winch Bar	\$12.75 Ea
4530SL 4"x30" Winch Strap Slip Loop	\$12.00 Ea
4530FH 4"x30" Winch Strap Flat Hook	\$12.00 Ea
4530WR 4"x30" Winch Strap D. Ring	\$14.00 Ea
26327WH 2"x27" Ratchet Strap w/Hook	\$12.50 Ea



#### Mud Flaps

401424 3/8" 24"x 24" General Bear Flaps	\$18.50 Ea
401430 3/8" 24"x 30" General Bear Flaps	\$20.50 Ea
IMX6T-2424X 3/8" 24"x 24" H.D. Plain Black Flaps	\$7.95 Ea
IMX6T-2430X 3/8" 24"x 30" H.D. Plain Black Flaps	\$9.50 Ea
2424S 1/4" 24"x 24" Std Plain Black Flaps	\$6.50 Ea
2430S 1/4" 24"x 30" Std Plain Black Flaps	\$7.95 Ea

#### Safety Products

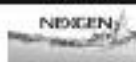
1005 Triangle Reflector Kit	\$17.95 Ea
29844 2"x12" White Reflective Tape	\$9.95 Ea
29845 2"x18" 11R/7W Reflective Tape	\$8.85 Ea
0720-02 20 Minute Fusee	\$2.25 Ea
0730-02 30 Minute Fusee	\$2.35 Ea
3C 3 Minute Smoke Bomb	\$10.75 Ea

#### Gloves

1006 White OX w/Elastic Band Glove	\$7.50 Pr
200 Atlas Blue Gloves	\$2.95 Pr
3396 Majestic Polar Penguin Glove	\$8.55 Pr
8354 Cotton Lined Leather Glove	\$5.95 Pr
3700LX Nitrile Tough Glove	\$4.20 Pr
174553-1000 Logo Hot Mill Gloves	\$3.25 Pr



1322-25J Def 2.5 Gallon \$7.95 Per Jug



NOTE: NOT ALL ITEMS ARE IN STOCK AT ALL LOCATIONS. HOWEVER, WE WILL BE HAPPY TO TRANSFER INVENTORY TO THE BRANCH NEAREST YOU.

**Visit [generaltrailerparts.com](http://generaltrailerparts.com)**

#### SPRINGFIELD

1420 South B Street  
Springfield, OR 97477  
Phone: (541) 746-8218  
1 (800) 452-9532  
Fax: (541) 726-4707

#### MILTON

7200 Pacific Highway East  
Milton, WA 98354  
Phone (253) 926-8903  
1 (800) 562-8380  
Fax: (253) 926-8908

#### OREGON CITY

21195 S. Highway 99 E.  
Oregon City, OR 97045  
Phone: (503) 263-2702  
1 (800) 452-9683  
Fax: (503) 266-9498

#### REDDING

5875 Eastside Road  
Redding, CA 96001  
Phone: (530) 246-3813  
1 (800) 475-1057  
Fax: (530) 246-3823



OCTOBER 2018

Log TRUCKER

## THE GRANDDADDY OF ALL LOGGING SHOWS AND IT'S...

# A JUBILEE OF TRUCKS



### WAVING IN THE RAIN

JHT Inc.'s 2006 Peterbilt 379 with ISX Cummins engine and Whit-Log trailer brought a very classy load to the

parade. The truck is owned by Jon and Traci Hall who just happen to be related to Marisa Hall who is Miss Lewis County for 2018. The big logs, pretty smile and matching dress is superior attention to detail.

## Morton Logging Jubilee has truckloads of history behind it...

**PHOTOS BY KEVIN CORE**  
**STORY BY MORTON LOGGING SHOW**  
*Loggers World*

Every year, the second week-end of August, the town of Morton, Washington opens it's doors and welcomes all to come and have a good time. The Logger's Jubilee has become a celebration for people of all ages. From the Main Street Parade to the Lawn-mower Races, the "Granddaddy of all Logging Shows", to the Jubilee Queen coronation, the Morton Loggers' Jubilee promises a good

time for everyone.

The idea of a logging show grew out of friendly competition between men who made their livelihood in the sometimes hazardous, always strenuous business of logging and lumbering. Now added to the friendly competition is a need to show the younger generation how it was done "in the good old days." Preserving heritage becomes increas-

(Continued on Page 8)  
**See "Jubilee"**



## GEAR BOX Inc.

TRANSMISSION & DIFFERENTIAL REBUILD & REPAIR

1037 State Street (Exit 79 off I-5) • Chehalis, WA.

8:00 a.m. - 5:00 p.m.  
 Monday - Friday

**(360) 748-8350**

**Let us Lower Your Cost Per Mile  
 with our  
 High Quality Time & Material Rebuilds**

★ FULLER  
 ★ EATON  
 TRANSMISSIONS  
 TRANSFER CASES  
 ★ SPICER  
 ★ ROCKWELL  
 DIFFERENTIALS  
 AUXILIARIES

Complete Time &  
 Material Rebuild  
 Unit Comes with a  
**1 Yr. Unlimited  
 Mileage Warranty**



*We Pride Ourselves on Genuine OEM Parts*

**CUSTOM BUILD or EXCHANGE**





### SELF-SERVE

T. E. Walrath Trucking's Kenworth log truck with an Olympic self loader is looking good rolling down the Main Street in Morton.

## **THANK YOU** **Steve Smith & Newport Equipment**

for the  
purchase  
of a 2019

### **ALPINE** **SHORT LOG** **TRAILER**

With Truck  
Equipment



## **CALL (208) 877-1714**

2810 Big Bear Ridge Road • P.O. Box 341, Deary, ID 83823

Fax: 208-877-1198 • EMAIL: [alpineindustrial@moscow.com](mailto:alpineindustrial@moscow.com)





## NICE RIDE

Kardia Inc. of Elma, WA brought this 1999 Kenworth W900B with Whit-Log Trailer, Lincoln bunks and a Better Weigh pup. It has a 550 Cat engine and 18-speed transmission. Justin Katzer is the driver.

## Advanced Hydraulic Supply

4444 N.E. 148TH Avenue, Portland OR, 97230

**1-877-887-1730 • (503) 289-0354**

# NEED PARTS?

**SCHOTT**  
PARTS & ACCESSORIES  
**503-463-0500**  
CALL FOR OUR CATALOG!

**I-5 Exit 263**  
8983 TRUCKMAN WAY  
SALEM, OR 97303  
SHOWROOM HOURS  
Monday-Friday: 9:00-5:30  
**WWW.TRUCKCHROME.COM**

**DYNAFLEX PRODUCTS**  
Diesel Exhaust Technologies  
Monster Stacks  
Chrome Mufflers, Elbows  
and MORE!

**HOWES LUBRICATOR**  
Diesel Treat  
Quality Products To The Trade Since 1920  
• Anti-Gel • Adds Lubricity • Increase MPG  
AVAILABLE • 15 oz.  
• Quarts  
IN... • 1/2 Gallons  
Case Pricing Available

**LED WORKLIGHT**  
Spot or Flood Versions  
10-30V - 780 Lumen  
**SALE \$13.85 ea**

**CHROME BUMPERS**  
We Have Square & Tapered Bumpers,  
12", 16", 18", 20" & 22"  
SPECIAL CUT OUTS - No Problem!  
  
16" Tapered



**CHROME SPRING  
LOGGER HANGERS** **\$89.95** PAIR  
**Sale!**

*Your Home for Chrome!* • BUMPERS • STACKS • LED LIGHTS  
• CHROME • FLAPS • FENDERS



**AIR BRAKE (NTA)  
QUICK FIX**  
Includes Over 30 Pieces



**NTA PUSH to  
CONNECT  
FITTINGS**  
Over 20 Pieces





## THE CONVOY

T. E. Walrath was at the parade showing off this new Deere skidder and their clean Kenworth and Olympic self-loader. Walrath is celebrating their 50th anniversary.

Check out our 2018  
line of dump boxes  
Call for a quote today!



**Lincoln**  
INDUSTRIAL  
CORPORATION

We manufacture & service  
Lincoln Log Trailers  
Parts & Service Shop  
available for most brands



Monday – Friday 7:30 – 4:30  
Saturday 8:00 – 2:00  
4130 Tumwater Truck Route,  
Port Angeles 98363  
1-800-492-6122 / 1-360-457-6122  
[www.lincolnindustrialcorp.com](http://www.lincolnindustrialcorp.com)



Like us on Facebook



We offer welding services and  
general welding supplies,  
plasma cutting,  
stock steel, and propane



Graham, WA  
Office  
Don Solid  
1-360-461-3795

[don@lincolnindustrialcorp.com](mailto:don@lincolnindustrialcorp.com)



Flat Beds,  
Tilt Beds,  
Hooklifts,  
Truss and  
Tilt Trailers





(Continued from Page 4)

ingly more important as progress brings new and better ways never dreamed of in the days of the springboard and axe.

Some say it was 1937 and some say 1938 when the first Loggers' Jubilee was held. It is a question of whose memory is best, as there doesn't seem to be a permanent record of those early shows. Some say the late F.E. Coleman was the main force be-

hind the first Jubilee. Others say Coleman started it in cooperation with Ed Baker, Peterman Timber Company superintendent, and Jack Sutherland, superintendent of Kosmos Timber, now known as the Morton Division of Champion International.

Still others credit J. Longmire with instigating the first logging show in a lot near his auto and truck repair shop. Reg Lester was arena director. Log bucking was held on a vacant lot on Main Street, and tree climbing was

later added on a tree near the Glen Fisher place.

A colorful "hillbilly" band advertised Jubilee by touring nearby towns, including Tacoma, Chehalis and Centralia. A mock "hillbilly" wedding on Main Street was a feature of the early shows, with plywood axes sold as souvenirs.

As Jubilee grew, it was arranged to hold the show on the present grade school playground. World War II came in 1941, and as efforts turned in other direc-

tions Jubilee was not held for the duration of the war.

In early October 1946, the celebration was revived as "Timber Wolves Daze," with Ross Surnworth managing it. The next year it was renamed Loggers' Jubilee and Nels "Bill" Hanson was hired as manager.

Bleachers were built and portable bleachers were brought in the following year to handle

(Continued on Page 9)  
**See "Jubilee"**

OCTOBER 2018

LOG TRUCKER



Sometimes the noise from the log truck horns gets pretty loud. This is my 3-year-old grandson when he'd had enough of the loud truck horns honking during the Morton Loggers Jubilee Parade. Luckily, his mom caught him before he ended up in another zip code.

# ST. JOHNS

## THE POWERTRAIN PEOPLE

## TRUCK & EQUIPMENT



**REBUILT TRANSMISSIONS/ REAR ENDS**  
(ALL SOLD EXCHANGE)



### FREE FREIGHT!

St. Johns will pay the Freight to you on any REBUILT TRANSMISSION or REAR END sold in Washington, Oregon, or Idaho

#### DIFFERENTIALS - MERITOR

PRICES VARY BY RATIO, ALL PRICES STARTING AS LOW AS...

RD20-145	\$2,140.00
RR20-145	1,240.00
RDL20-145	2,615.00
RRL20-145	1,600.00
RD23-160	3,165.00
RR23-160	1,865.00
RDL23-160	3,715.00
RRL23-160	2,440.00

#### EATON:

D170	\$4,450.00
R170	3,385.00
D170D	5,350.00
R170D	3,975.00
DT461P	4,700.00
RT461	3,075.00
DD461P	4,925.00
RD461	2,850.00
DS461P	3,425.00
RS461	1,850.00
DS402	2,100.00
RS402	1,325.00
DS404	1,725.00
RS404	1,275.00
DT402	2,875.00
RT402	1,975.00
DD404	3,250.00
RD404	2,050.00
DSH40	2,300.00
RSH40	1,675.00
DDH40	3,550.00
RDH40	2,400.00
23080D	3,750.00
23105S/D	CALL

#### NOW STOCKING EXCHANGE FLYWHEELS



**NO WAITING FOR YOURS TO BE TURNED**

**\$75.00**

Or Machine Yours \$65.00

#### FULLER

RTX14609BP	2,750.00
RTO14613	2,725.00
RTX14710C	2,700.00
FRO16210C	3,375.00
RTLO16618A	3,600.00
RTLO14713A	3,125.00
RTLO16713A	3,700.00
RTLO16718B	3,900.00
RTLO16913A	3,700.00
RTLO16918B	4,150.00
RTLO18718B	4,175.00
RTLO18913A	4,075.00
RTLO18918B	4,500.00
RTLO20913A	4,675.00
RTLO20918B	4,875.00
RTLO22918B	6,550.00

#### MERITOR

MO16G10C	3,915.00
----------	----------

Many Other Transmissions And Differentials Available... Call Us First!  
Custom Repair For Your Unit  
**CALL US FIRST!**

#### IN STOCK

Rebuilt Spicer 1241C & D Auxiliary



#### POWERSTEERING PUMPS / GEARS

##### PUMPS

- Eaton
- Parker
- Vicker
- Saginaw
- ZF
- TRW

##### GEARS

- Ross/TRW
- Saginaw
- Bendix
- Gemmer
- Sheppard



Same Day Shipping!

#### Fuller 18-Speeds SPECIAL BUILD

☆SPECIAL☆  
LIMITED TIME  
OFFER

Like for Like  
Exchange

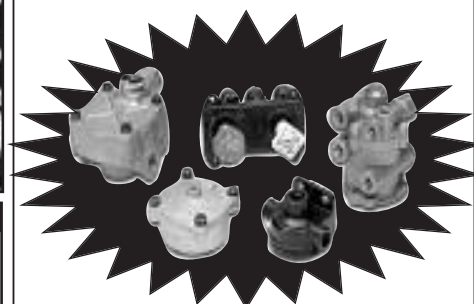


**Every Gear is 100% NEW OEM**

RTLO18918B \$5,395.00 exchange  
RTLO20918B ....5,895.00 exchange  
RTLO22918B ....6,495.00 exchange  
2 year unlimited mileage warranty on all late model Fuller Roadranger Transmissions

**Now Stocking Replacement Air Valves for:**

**BENDIX  
HALDEX  
MIDLAND - GRAU  
SEALCO AIR  
CONTROLS**



**FULL SERVICE TRUCK & TRAILER REPAIR  
Call St. Johns First!**

8435 N. CRAWFORD STREET • PORTLAND, OREGON 97203

NATIONWIDE TOLL FREE:  
**(800) 222-8435**

PORTLAND:  
**(503) 286-8336**

FAX:  
**(503) 283-3423**



(Continued from Page 8)

the crowds. High climbing was done on trees near the Tilton River, and cable splicing and tie loading were added to the program. For the first time, the roar of power saws was heard in the show.

More bleachers were added in 1950, and climbing trees were raised on the ground. A tug-of-war between the loggers and the mill men was especially hilarious. It was that year Kosmos Timber displayed a truck loaded with 34,170 board feet of logs.

With Morton known as "the tie producing capital of the world" it was fitting that the tie loading competition garnered much interest. Competition between Archie Cheney of Kosmos and Dean Blaksmma of Oregon was also a highlight of the shows.

Morton's Chamber of Commerce accumulated Jubilee funds each year and purchased two blocks in the Collar-Wood addition to give Jubilee a home and provide Morton

(Continued on Page 13)  
See "Jubilee"



### BIG RIG IN THE PARADE

Big Rigs Tanker Service's 2018 Peterbilt 389 was staffed by Breanna, Kelsey and Don for the ride in the parade.

**Pickup  
in Oregon**  
**NO SALES TAX!**  
**We Do  
Limited Installs  
Like for Like**



**CAT  
C-15  
6NZ**

Several  
Single  
Turbos,  
Super  
Conditon

Low Miles, **CALL!**

**We Buy**  
**Running, Wrecked,  
End of Life Trucks,  
and Stand Alone  
Parts, Too!**



We are your  
**NORTHWEST HEADQUARTERS**  
for 46,000-lb. **ROCKWELL MERITOR &  
EATON TANDEM REARENDS**  
all ratios, all suspensions, rebuilt gearheads  
& parts available - **CALL NOW!**



**REBUILT TRANSMISSIONS**  
**PLEASE CALL  
FOR PRICES**

### DETROIT SERIES "60"



Dedec III, IV & V Engines Available,  
With Jakes, Good Condition



## WHOLESALE TRUCK PARTS & EQUIP.

Nationwide & Canada

**1-800-547-1315**

5925 N.E. Portland Highway, Portland, OR 97218

HOURS: 8:00 - 5:00 Monday thru Friday

FAX# 1-503-288-6337 • DELIVERY AVAILABLE

**503-288-6333**





### LONG HOOD

Kardia Inc. of Elma brought their 2001 Peterbilt 379 long hood with a Lincoln trailer to the parade in Morton.

## MILLER TRUCK SALVAGE L.L.C.

### DIESEL TRUCKS & PARTS

15015 N. W. MILL RD. • PORTLAND, OR 97231

**"Specializing in '70's thru 90's"**

**(503) 283-1797**

# CABLE-LITE LOGGING WRAPPERS

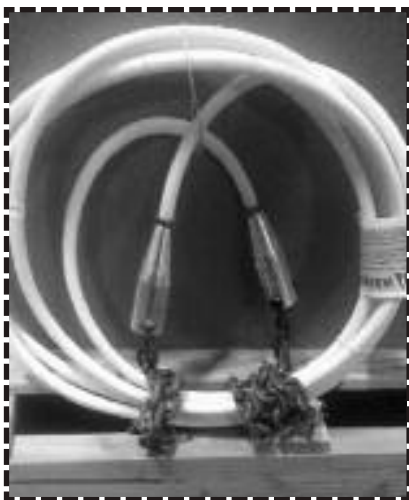
THE HIGH-TECH  
REPLACEMENT FOR  
WIRE ROPE WRAPPERS

## Reduce Shoulder Injuries

✓ 3 times lighter than equivalent  
strength wire rope

## Reduce Hand Injuries

✓ No "jaggers" to tear up your  
hands



Cable-Lite Logging Wrappers have been field tested and proven to provide a lightweight, ergonomic replacement to the standard wire rope wrappers.

Cable-Lite Wrappers meet or exceed all Federal and State regulations and are labeled for easy inspection.

# HARBOR Saw & Supply

3102 Simpson Ave. in Hoquiam!  
**800-786-6463 • (360) 532 4600**



2000 T600, C15 w/retarder, 18  
spd, 461 AG400 **Parting Out**



1997 CH600, E-7, 10-spd Spicer,  
Spicer rears **Parting Out**

1995 T800,  
3406E, 10  
spd fuller,  
40145  
AG100.  
**Parting Out**



2005 VNL  
Volvo,  
18 spd  
Fuller, 46k  
Rockwell  
dbl lock  
**Parting Out**



1993 Volvo,  
low mile  
3406C Cat,  
13 spd  
Fuller, 402  
Eatons,  
**Parting Out**



1989 T800,  
444  
Cummins,  
13 spd,  
402 2spds.  
**Parting Out**



## ENGINES / TRANSMISSIONS Check With Us Before You Buy!

### TRANSMISSIONS

• RT 6613	.....\$1,250
• RT 6610	.....\$1,250
• RTO 15613	.....\$2,000
• RTO 14715	.....\$1,500
• RTO 14613	.....\$1,500
• RTLO 16713A	.....\$2,600
• RTLO 18718B	.....\$2,750

### ENGINES

• 3406B 425 h.p. Inspected.....	\$5,000
(Uninspected)	
• 8.3 Cummins, mech. \$3500 exchange	
• 5.9 Cummins, runs good .....	\$2,750
• Cummins BC 1-4 series .....	
.....3000-4500 exchange	
• E-7 300 W/Jakes, good runner .....	\$4000
• 675 285 hp., low miles .....	\$3500
• 3406E 5EK- 2WS. 4000-6000 exchange	
• DDEC4 450hp., runs good .....	\$5000

**EXCHANGE REQUIRED ON SOME EQUIPMENT - CALL FOR SPECIFIC UNITS**





### SHORT LOGGER

Sierra Pacific Industries of Centralia was represented by this clean and shiny Pete short logger.

**P.O. BOX 668  
WILBUR, OR 97494**

# WHIT-LOG Trailers

**WE ARE NOW ON FACEBOOK!**

Check out all  
the pictures and  
Like Our Page!



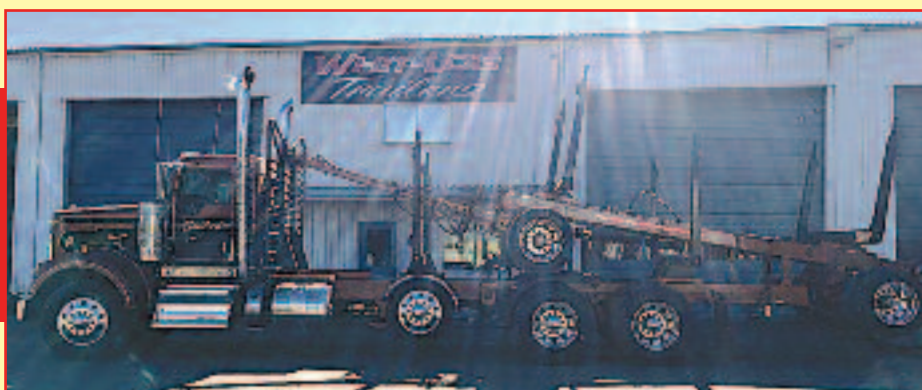
[www.facebook.com/Whitlogtrailers.com](http://www.facebook.com/Whitlogtrailers.com)



**Dancer Logging, CAMAS VALLEY, OR,** Brand New 2018 Whit-Log SLE300 Short Logger with Matching Truck Equipment. Custom Steel Cab Rack, Custom Paint, and Much More... **Thanks Pete & Scott**



**Pellham Cutting, ST. HELENS, OR, 2EA)** Brand New 2018 Whit-Log SLE300 Short Logger's with Matching Quick Change LL/SL Truck Equipment. Custom Steel Cab Rack, Bendix Disc Brakes, Custom Paint, and Much More... **Thanks Greg!!**



**Stafford Reload, SWEET HOME, OR,** Brand New 2018 Whit-Log SLE100 Short Logger with Matching Truck Equipment. Custom Steel Cab Rack, Tipper Loading Style, Custom Paint, and Much More... **Thanks Steven & Phil!!**



**Risseuw Trucking LLC, BUELL, OR,** Brand New 2018 Whit-Log Lowboy Truck Equipment. Custom Steel Cab Rack, Complete Wet Kit, Custom Air/Electric/Hydraulic Station, Minimizer Fenders on all 4) Corners, and Much More... **Thanks Don & Darrin!!**

**OFFICE: (541) 673-1166**  
EMAIL: [brett@whitlogtrailers.com](mailto:brett@whitlogtrailers.com)

**TOLL FREE 1-800-452-1234**  
[www.whitlogtrailers.com](http://www.whitlogtrailers.com)





## MISS LEWIS COUNTY

A little rain during the parade couldn't dampen the sunny spirit of Miss Lewis County 2018 Marisa Hall as she smiled and waved from the top of JHT's 2006 Peterbilt 379.



Call (800) 422-0074 or join online at [www.loggers.com](http://www.loggers.com)

### Membership Highlights...

- Master Logger Program (exceeds SFI logger training requirements)
- Monthly Springboard Magazine
- First aid/cpr and pilot car training
- Log A Load For Kids® - giving campaign for Children's Hospitals
- WCLA Insurance Agency - top coverage for the timber industry
- Employee benefits programs through WCLA's benefits partner: Kibble & Prentice
- WCLA Claims Management Program - providing the benefit of savings on L & I premium costs, improved safety standards and reduced claims costs

TRUCK MOUNT      TRAILER MOUNT

**LOG AND PULP LOADERS**

**Several Used Sercos Available**

**NEW SERCO 160 LOG LOADER**, 25' boom, 46" grapple, Mounted on truck of your choice.

**2000 STERLING L7500**, CAT 3126, 9 speed, 18,000# front, 40,000# rear, 22' bed, Built Rite 80, 22' 4" boom, 56" grapple STK. #5542

**2017 TRAILMAX TRD-54-T**, 25' tilt, 5' fixed, 53950# hauling capacity STK. 5404

**NEW UNITED 4000 GALLON WATER TANK**, self-loading, 2 front, 2 side, 2 rear sprays, hose reel, gravity dump STK. #5518

**6 WHEEL DRIVE 2003 INTERNATIONAL 2674**, ISM Cummins, 370 hp, Allison Automatic, 20,000# front, 40,000# rear, 2017 United 4000 Gal Water Tank, 2 front, 2 side, 2 rear sprays, hose reel STK. #4942

**NEW SERCO 160PH LOG LOADER**, 25' reach, 400° rotation, 46" continuous rotating grapple, 18,826# capacity, 10° off set jib STK. #5329

*Sold & Serviced by*



**L&M Truck Sales, Inc.**  
**4001 E. Boone Ave.**  
**Spokane, WA 99202**  
**800-796-9813**



(Continued from Page 9)

youth with a lighted athletic field.

Ernie Loden of Mineral began clearing the site in the spring of 1952 with a Cat owned by St. Regis Company. Volunteers lugged roots and limbs, burned slash and labored to prepare for the fall's Jubilee. PUD employees and boys from the State Fire Camp were responsible for much of the work involved with putting lights up. The field was graded, seeded and used for football that fall. Governor Arthur B. Langlie attended that Jubilee and complimented the community on its endeavors.

Jubilee managers include Bill Hanson (1946- 1957), Neil Wright (1957-59), L. "Howdie" Davison (1960), Gary Coleman (1963-67), Jim Mitchell (1968-69), Don Rowe (1970-71), Gary Coleman (1972-75), "Sonny" Mettler, with brothers "Punk" and Rob (1976), Terry Simonis, (1977-79), "Sonny" Mettler (1980-pre-



### DARREN BAKER'S 2018 KENWORTH W900B

Darren Baker's KW 2018 W900B leads this lineup of trucks in the Morton Loggers Jubilee Parade for 2018. Everyone had a good time in spite of the badly needed rain.

sent).

Improvements over the years include permanent concrete bleachers constructed by Grose Construction Co. of Morton, new

concession stands, a portable all-purpose building, a Queen's contest to advertise Jubilee (the first queen was Kathy Boren in 1955), and the first Jubilee float built

was built under the direction of Chamber President Jerry

(Continued on Page 14)  
**See "Jubilee"**

# OLYMPIC

Custom Manufacturer of the Olympic Crane, Log Loader and Trailer.

Want to learn more? Give us a call  
or send us an email!  
Sales@cimfg.com  
360-786-1890



All of our trailers can be customized to fit your everyday needs.  
Financing is available!



Come check out our retail space! We have Ingersoll Rand  
Compressors and CB radios in stock!



We have logging bunks and log loaders in stock and we are available  
for installation!



Now that the weather is changing, we have a wide variety of  
rain gear and tool boxes!



Check us out on Facebook & YouTube!

facebook

YouTube

www.facebook.com/CapitalIndustrialAndOlympicMFG/

**Capital**  
INDUSTRIAL

2649 R.W. Johnson Blvd. SW  
Tumwater, WA 98512  
capitalindustrialinc.com

MARINE CRANES • LOG LOADERS • TRAILERS • CUSTOM TRUCKS • CUSTOM FABRICATION • REPAIR SHOP





## DOWN THE ROAD

Kenworth Short Logger No. 7 from Pacific Logging and Processing makes its way through the parade route.

## Jubilee

(Continued from Page 13)

Mullins and Don Gayman. Our latest, and most prize winning float was built by our dedicated Morton Lion's Club members.

Jubilee Park is another addition brought about by the Loggers' Jubilee. Through the efforts of the Chamber of Commerce, the park has gradually been improved and now has a Little League ball field and playground equipment. An old steam donkey, believed to have been in use in the Morton-Mineral area around 1918, was donated by Otto and Bill Studhalter for display in the park. The steam donkey has since been

moved to Gus Backstrom Park. In 2016, Jubilee donated \$20,000 to the City for playground equipment in the Park.

For nearly 30 years Eugene "Bing" Bingaman commanded the arena events. In 1989 his nephew Charlie Russell accepted the challenge and responsibility. In 2004 the torch was handed over to Brian Dalton.

The voice from the announcer's mike was Gil Coleman in the early years. Gary Coleman, Reg Lester, Jr., and Mike Fairhart all Morton natives, have handled the job.

In 2008, the Jubilee lost Reg Lester Jr. after serving the show

(Continued on Page 16)

See "Jubilee"

# LOGGERS WORLD Suspenders are Back!!



**Show the world  
that you support  
LOGGERS WORLD  
MAGAZINE  
by wearing  
Loggers World Suspenders**

Loggers World Suspenders are now available in traditional red (2" wide) with black lettering. You can order them with leather ends or clips and we also have the buttons. Just use the handy form below.

**Only  
\$18.50  
per pair**

Washington Residents pay  
\$20 including Sales Tax  
Plus \$7.50 shipping & handling  
Offer expires December 31, 2018

Need a "Brake" on your Truck Insurance Rates?

**T.W. MORGAN INSURANCE SERVICES**

Since 1991 Insurance & Financial Services Brokerage Agency

"AN AGENT WHO UNDERSTANDS TRUCKING"

- Log Trucks • DOT Fuel Bonds
- Dump Trucks • Chip Trucks
- Tow Trucks • Sand & Gravel Trucks
- Truckers General Liability & Cargo Available
- Short & Long Haul Trucking • 50-500 miles to unlimited mile radius

**90% of Our Quotes  
Save Our Callers \$\$\$  
WHAT ABOUT YOU?**

Ask for Tim • 503-245-3345 or 888-821-4717 • Tigard, Oregon  
Serving Oregon, Washington & California

Name \_\_\_\_\_ Phone \_\_\_\_\_  
Mailing Address \_\_\_\_\_ City \_\_\_\_\_ State \_\_\_\_\_ Zip \_\_\_\_\_

# \_\_ 46" Leather # \_\_ 46" Clip # \_\_ @ \$18.50 = \$ \_\_\_\_\_  
# \_\_ 50" Leather # \_\_ 50" Clip WA Sales Tax # \_\_ @ \$1.50 = \$ \_\_\_\_\_  
# \_\_ 54" Leather # \_\_ 54" Clip S & H @ \$7.50 (\$13.00/ 2 or more pr.) = \$ \_\_\_\_\_  
Bucksaw Buttons - \$3.00 per package of 8 \_\_\_\_\_ Buttons @ \$3.00 = \$ \_\_\_\_\_

**Send your check or Money order to:**

LOGGERS WORLD LLC, P. O. Box 1631, CHEHALIS, WA 98532  
Credit card sales call: 800-462-8283

Total \$ \_\_\_\_\_





## HEAVY DUTY TRANSAXLE

16891 146th St. SE Suite 103 Monroe, WA 98272

Hours: 8:30am to 4:30pm

360-794-2021 TOLL FREE: 888-383-3301

HDTRANSAXLE@USA.NET WWW.HDTRANSAXLE.COM

### Exchange Units in Stock

#### Differentials in Stock

AxleTech, Clark, Eaton,  
Fuller, Meritor, Spicer

### Full line of Planetary Service Parts

AxleTech, Clark, Rockwell, Shuler

Fits: Washington/ Skagit/  
Thunderbird/Madill Yarder Axles  
& More



**Local Full Service Gear Shop**  
Custom Gearwork - Time & Materials



Late Style 20 inch Clark HUB Fits:  
BD 50/70 BD 56/60 BD 45/50



New & Rebuilt Clark Planetary  
Assemblies in Stock

## UNITS IN STOCK! - NEW & REBUILT

20145 REAR REAR	DS461	RTLO20918B	RTLO18918B
20145 REAR LOCKERS	DD461	RTLO18718B	RTLO16713A
20145 FRONT LOCKERS	DC461	RTO146131B	RTO14613
23160 FRONT LOCKERS	RS461	RTLO16915	RTLO15715
23160 REAR LOCKERS	RD461	RTLO14715	RTLO14709
RATIOS: 4.0, 4.30, 4.56, 4.89	RC461	RTLO16908MLL	

### SPICER/DANA

1241C / D - REBUILD EXCHANGE

AMO 1004-C / D

AT1202 AIRSHIFT / MECHANICAL

**Call us for current stock!**

**888-383-3301**

## DRIVEN BY SCOTT MCDONALD

Wyss Logging brought their No. 33 truck, a Kenworth W800, driven by Scott McDonald.

# LOGGERS WORLD|.COM



**Have you asked if you qualify for a  
TIMBER Log Truck Grant?**

**Funding deadlines are rapidly approaching!**

North Coast Unified Air Quality Management District

(707) 443-3093 [www.ncuaqmd.org](http://www.ncuaqmd.org)

**Drive Log Truck in CA?**



(Continued from Page 14)

OCTOBER 2018

LOG TRUCKER

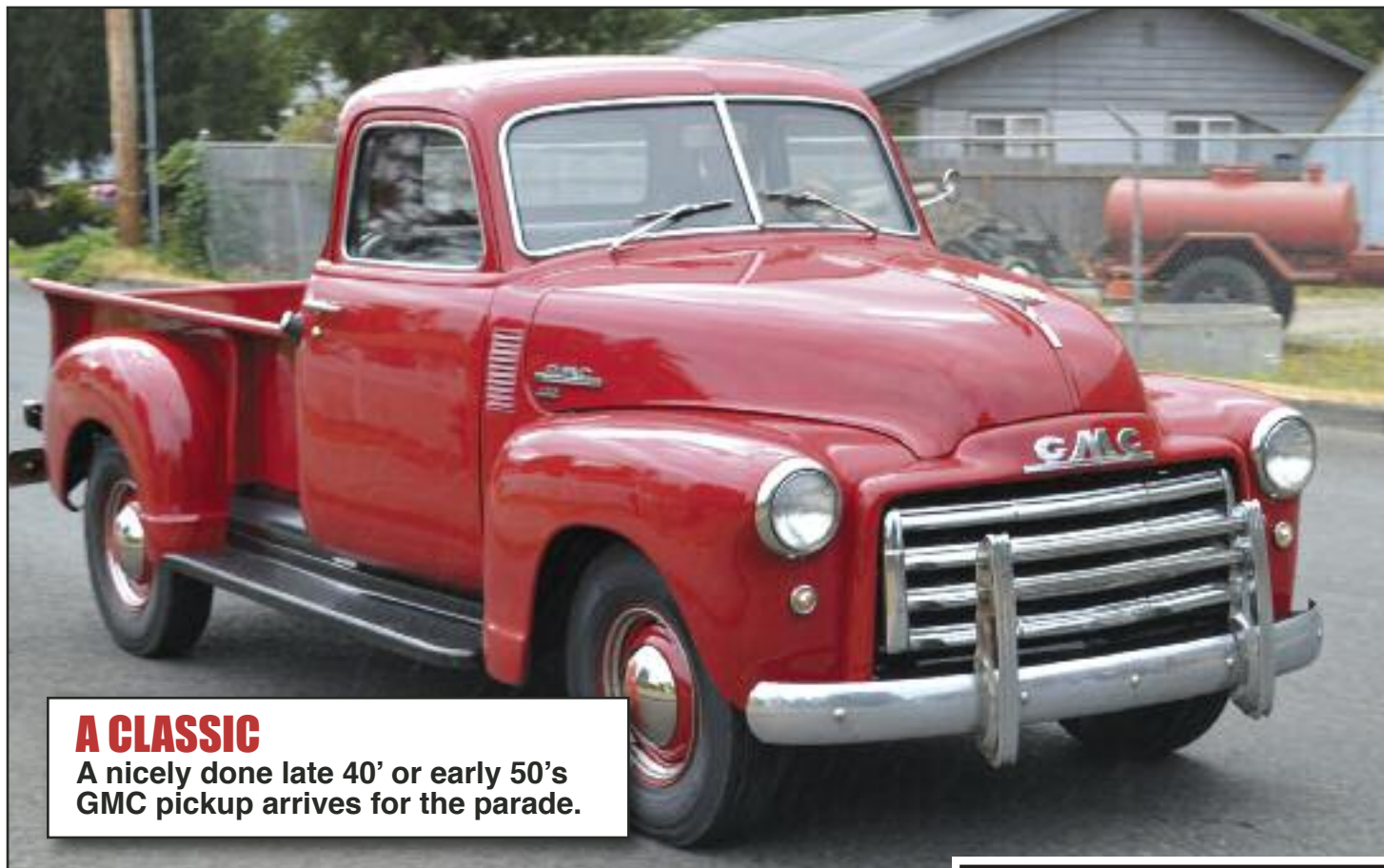
for 42 years. In 2009, Rick Stockdale another Morton native, joined Mike Fairhart in announcing the Jubilee.

Any history of Jubilee must be sketchy because of space, but would not be complete without mention of the fine cooperation offered by the logging operators of the surrounding area. They have made donations of money for contestant prizes and have supplied logs and materials needed for the shows. The countless hours of volunteer work by community-minded people in staging such a show can never be valued in dollars and cents and it would have been impossible to list all those whose efforts have nourished the infant fledgling into a full grown show over the years.

Each year the Jubilee, started so many years ago, grows bigger and better. It has become known as "the Granddaddy of Logging Shows". On Thursday night, the Queen's Coronation begins the now four-day weekend, while Friday night hosts the annual "National Championship Lawnmower Races". Saturday begins with a 10K run as well as bed races, our grand parade, and the first of our two day logging show hosting some of the nations top professional logging competitors, and ends a street dances on Main Street for all ages.

One of the most interesting features of Jubilee weekend is the Saturday parade, sporting junior events, floats, marching units, clowns and displays of logging equipment. It has been tabbed one of the best logging show parades in the country.

Thanks to the Budweiser Brewery and Peterson Distribut-



### A CLASSIC

A nicely done late 40' or early 50's GMC pickup arrives for the parade.

ing of Chehalis, Loggers' Jubilee had the rare privilege of hosting the Budweiser Clydesdales twice in four years. In 1989 they were here for Jubilee's Washington Centennial celebration. In 1992, they marched in our parade and logging arena as a part of Loggers' Jubilee's 50-year anniversary. We would always welcome the grand horses and hope to have them back again some day.

Without the help of our community, Show Sponsors - KING Distributing of Chehalis and Port Blakely, our Event Sponsors, local businesses, and the many volunteers, the Jubilee

would not be the success it is. Proceeds from the Logger's Jubilee are distributed throughout East Lewis County. Besides dedicating a majority of funds back to the Morton Chamber of Commerce, the Jubilee supports scholarships, sport teams and other organizations from Centralia to White Pass. Please browse around on our website, we hope you will visit Morton this next year - August 9 - 12, 2018



### WE OFFER:

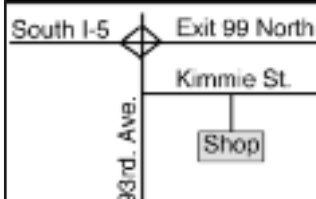
- General Truck Repair
- Hendrickson Rebush Center

Incl. Hendrickson 380 Series Equalizer Beams

We Rebush Log Trailers

CHALMERS & 8-BAG  
HENDERSON PRIMAX,  
NU-WAY, PETERBILT,  
FREIGHTLINER  
KENWORTH SUSPENSION  
REBUSHES

• Stop By Our Shop •



### COMPLETE LOWER REBUSH

**\$1675**

Bar Pins Extra

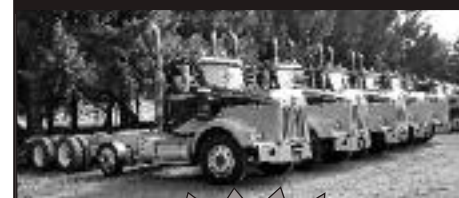
Usually in 3 Hours or less  
Call For Appointment



## SCHELLER DIESEL SERVICE

9144 Kimmie Street - Olympia, WA. 98502 • (360) 943-9818

### KENWORTH T800 4-AXLE CHASSIS



**7 Trucks**

To Choose From  
YOUR CHOICE

**\$55,000**

Cummins ISX Engines,  
18-speed trans. (RTLO18918B),  
Single speed Eaton rear-ends  
4:10 or 4:11 gears w/locker  
**Hendrickson Haul-max**  
walking beam susp.

#18 R118638 2006, D46-170HP  
rears, 252" WB, 475hp \$55,000

#38 R892655 2002, DSP-463P  
rears, 252"WB, 475hp \$55,000

#69 R148686 2006 D46-170HP  
rears, 252" WB, 475hp \$55,000

#79 R179275 2007 D46-170HP  
rears, 252" WB, 475hp \$55,000

#87 F064742 2004, DSP-463P  
rears, 252"WB, 475hp \$55,000

#93 R087300 2005, D46-170HP  
rears, 252" WB, 475hp \$55,000

#114 R892657 2002, DSP-463P  
rears, 252"WB, 475hp \$55,000

**CLEAN AND IN EXCELLENT SHAPE!**  
Maintenance Records - Regular Oil Samples  
For More Info: [www.irelandtrucking.com](http://www.irelandtrucking.com)

Thomas H.  
**IRELAND**  
INCORPORATED

Call Charles Ireland  
**541-863-1501**  
Myrtle Creek, OR



**What can we  
BUILD  
for you?**

**888-222-5201**



# BLAST FROM THE PAST

BY QUINN J. MURK FOR  
LOGGERS WORLD

17

OCTOBER 2018

LOG TRUCKER



## ARE HIS EARS STILL RINGING?

Old cat skidders are going to be amused by this picture. There is a right way to grub out a standing tree, and this photo shows how not to do so. This operator is one very lucky individual. Oh, he made the tractor go back and forth and the blade go up and down, but he did not know what he was doing. Luckily for him, the Caterpillar D8-K had a heavy duty canopy, as only a limb riser suffered any real damage. This photo of western road construction was found in an old desk being discarded in the Memphis, Tennessee area. It was sent to me by my friend there, Rob McCleary, who also happens to work for the Cat dealer in Memphis, "Thompson Machinery." I've been there, and they are nice folks.

## CONTACT QUINN VIA EMAIL

ktmurk@centurylink.net  
Or by Mail at: P.O. Box 319  
Siletz, OR 97380

CHECK US OUT ONLINE AT...

# LOGGERSWORLD.COM



# BLAST FROM THE PAST

BY QUINN J. MURK FOR  
LOGGERS WORLD



## IS THIS A LOAD OR WHAT?

Some loggers would horribly overwork or overload the old moving cars. These flat steel-deck donkey moving cars were designed with rounded corners and edges, so the machines could pull themselves on, turn, and be moved down the line to the next job. This relatively light-weight car is moving a big yarding donkey for the West Fork Timber Co. of Mineral, Washington. West Fork Timber, which vowed to never close, and used to say "There will always be West Fork," was recently sold to Sierra Pacific. West Fork Timber is no more.

**Have a story idea for an  
upcoming issue of Loggers  
World?**

Email [kevin@loggersworld.com](mailto:kevin@loggersworld.com)

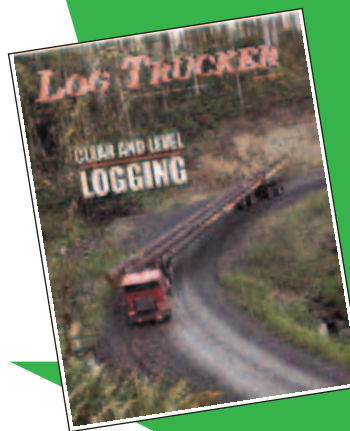
**Subscribe Today!**  
**LOG TRUCKER**

*The magazine about the  
forest products  
transportation industry*

12 Issues – 1 Year Subscription

**\$25<sup>00</sup>**

WA Residents pay \$27.40 w/tax  
Inside U.S.A.



Offer expires  
December 31, 2018

LOG TRUCKER

Send your check or Money order to:  
LOGGERS WORLD LLC  
P. O. Box 1631  
CHEHALIS, WA 98532

☐ \$25.00 for 1-Year Subscription    ☐ \$50.00 for 2-Year Subscription

**WASHINGTON RESIDENTS PAY \$27.40 & \$54.80 w/SALES TAX**

NAME:.....

ADDRESS:.....

CITY:..... STATE:..... ZIP:.....

PHONE: (       ) .....

(ALLOW 5 WEEKS FOR DELIVERY OF FIRST ISSUE)



# LOG TRUCKER

## OCTOBER 2018

### ADVERTISERS INDEX

Advanced Hydraulic and Ind.  
Supply.....8

Alpine Industrial LLC .....17

Capital Industrial Supply ....13

General Trailer .....3

H.D. Transaxle Inc. ....14

Harbor Saw & Supply.....8

Ireland, Inc. ....16

L&M Truck Sales, Inc. ....6

Lincoln Industrial Supply....11

LKQ K.C. Truck Parts.....19

LKQ Wholesale Truck Parts .9

Log Trucker Subscription...16

Miller Truck Salvage LLC....10

North Coast Unified Air  
Quality Management  
District .....12

Scheller Diesel Service.....14

Schott Parts & Accessories .6

St. Johns Truck &  
Equipment .....8

The Gear Box Inc.....12

Tim Morgan Insurance .....16

Washington Contract  
Loggers Assoc.....18

Whit-Log, Inc.....7

OCTOBER 2018

LOG TRUCKER

#### FOR SALE



**2008 Kenworth W900B,**  
ISX Cummins Factory 600hp, 18spd  
with lockers on Primax air ride with a  
factory drop axle, motor has had a  
recent overhaul with paperwork, all new  
tires on truck with 6 new dura brite  
wheels, trailer is 2013 Lincoln light,  
weight of truck and trailer only 27,500,  
new leather seat, new Delphi blue tooth  
with satellite radio **\$97,500 OBO**

**541-409-4142**

#### FOR SALE



**2006 T800 Kenworth,**  
**Short Logger Package, #5,** Cummins  
ISX CM870, Jake Brake, 18 spd, Single  
spd Eaton rear-ends (D46-170HP), 4:10  
gears w/locker, Hendrickson Haul-Max  
walking beam suspension, 3/8" steel  
frame, 267" wheelbase, 4 axle truck, 2  
axle Whit-Log trailer, Vulcan electronic  
scales .....**\$129,000**

**541-863-1501**



**(800) 622-5170 • (360) 736-3344**

**KC TRUCK PARTS**

**183 STATE HWY. 508, NAPA VINE, WA.**  
**www.LKQheavytruck.com**



**2013 PETE 388,** Cummins ISX15, RTLO18918B,  
40K rears w/lockers.....**PARTING OUT**



**2011 KW T700,** ISX15 550, 13 speed,  
40K rears .....**PARTING OUT**



**2014 PETE 389,** ISX 15, 18-speed, 46K  
rears w/lockers .....**PARTING OUT**



**2015 WESTERN STAR Day Cab,** Detroit  
DD16 600hp, Allison 4500RDS 4th Gen,  
46K rears w/lockers.....**PARTING OUT**



**1998 KW T800,** Detroit Series 60, 18 spd,  
46K rears w/lockers .....**PARTING OUT**



**2010 KW T800 5 window Daycab,** ISX 600,  
RTLO18918B, 40K rears on Primax 3.90. needs  
enging rebuilt.....**COMPLETE OR MAY PART  
OUT,** very clean 250" WB w/extended frame