

# LOGGERS WORLD

VOLUME 53 NUMBER 11

To Advertise Call: (800) 462-8283

NOVEMBER 2018



LOGGERS WORLD LLC  
P. O. Box 1631  
CHEHALIS, WA 98532-8425

PSRST STD  
U.S. POSTAGE  
**PAID**  
PERMIT NO. 72  
LEWISTON, ID



# THE NEW HTH624C 4X4 GO BIG OR GO HOME.



Dominate your workload with the new, hefty HTH624C 4x4. Fly through big timber with four-roller, four-wheel drive performance. Switch to multi-stem processing – whenever you feel like it. Take advantage of powerful delimbing and larger cutting capacities. Make life easier with no-sweat maintenance. Go big with the new HTH624C 4x4 and get all the big advantages that come with it. Day after day.

[www.Waratah.com](http://www.Waratah.com)

Kelso, Washington  
+1 (360) 636-2950

Newnan, Georgia  
+1 (770) 692-0380

 **waratah**  
BUILT TO WORK



558/558 LL FOREST MACHINE

# MORE LOADS PER DAY

## WITH SWING TORQUE AND HORSEPOWER TO SPARE

**BUILT FOR IT.™**

**POWERFUL LOGGING SOLUTIONS**



**KNUCKLEBOOM  
LOADERS**



**SKIDDERS**



**FOREST  
MACHINES**



**WHEEL FELLER  
BUNCHERS**



**TRACK  
HARVESTERS**



**TRACK FELLER  
BUNCHERS**

Our goal is to help you move more loads at a lower cost. The all new 558/558 LL is redefining forestry machine performance, through improved power, efficiency, operator comfort and an optimized work tool system. Key features include:

- Increased engine horsepower and swing torque add power and boost performance under load
- Component layout, back-to-back main hydraulic control valves and engine speed control maximize efficiency
- Cooling capacity increased 33 percent for trouble-free operation
- New premium rear entry cab and side entry cab enhancements improve operator experience

**Look to your Cat® dealer for financing and all the machines you need for sustainable harvesting and land management, forestry road construction, hauling and millyard. Total support from one source.**

[www.cat.com/forestry](http://www.cat.com/forestry)



[www.cashmanequipment.com](http://www.cashmanequipment.com)  
Nevada and Eastern Sierra  
800-937-2326



[www.holtca.com](http://www.holtca.com)  
Central Northern California  
800-452-5888



[www.ncmachinery.com](http://www.ncmachinery.com)  
Western and Central Washington  
800.562.4735 and  
Alaska 800.478.7000



[www.petersoncat.com](http://www.petersoncat.com)  
Northern California, Western  
Oregon and Southwestern  
Washington  
800-452-7676



[www.westernstatescat.com](http://www.westernstatescat.com)  
Idaho, Western Montana, Eastern  
Washington, Eastern Oregon and  
Northwest Wyoming  
800-852-2287



# Finley's Rigging Shack

"Classic"



Finley Hays was well known for his ability to tell a good story. His unique perspective was gained by growing up in a logging family, and after starting *Loggers World*, talking to loggers all over the country. Finley went on to his Heavenly Reward in 2008 but we have almost 40 years of his writing and storytelling to enjoy. Finley's Rigging Shack remains one of the most popular features of *Loggers World* and we think that is appropriate for the man that put so much of his life into his vision of a "Loggers Magazine".

## Originally Printed in November 1982

### INTERESTING JOBS:

I'm probably one of the most fortunate men you've known. One big and great deal that I like is that my work is interesting and I am dedicated to it. I'd do it for nothing --- and often times have.

A man is in good shape, as far as an interesting life goes, if he has work that is more important than his comfort. If he has work that is so important it is worth suffering physically, and sometimes mentally, for. I fit into that category.

I like being alive, I like where I am and I like what I do. Most of the time I am eager to get up and get at it. This very morning the first thing I thought of was that I was going to have a visit with

Clyde Sprague at our office at 7:00 o'clock in the morning. Clyde was going to tell me about some of his activities concerning law suits and things like that he was involved in.

I had heard of them, had known Clyde for a long time and like him very much. I had a lot of respect for Clyde as an honest and hard working logger.

Got sidetracked talking about Clyde but we are going to have his story in the December Issue of *Loggers World*. You won't want to miss this because it is a story of a Contract Logger taking on one of the largest companies in Japan. He may win. He may not win.

Clyde is a go ahead man and he is just one of the reasons my job is so interesting and challenging.

I meet lots of interesting people and my main occupation is meeting and talking with and writing about logging operators. There just cannot be a better job. I learn from them because they are action packed people who share with me their methods and their ways of doing things. The most valuable thing they share may be their plans, their goals. What they expect and how they intend to make their goals come true. That is educational, motivational and darned helpful.

I've always liked, admired and respected loggers more than almost anyone else and see no reason to change. They have a job that is more important than their comfort.

Work all day, get home late and then spend most of the night doing a repair job and after that grab three hours sleep, awake, shower, drink four cups of hot black coffee and then head out to do it all over again. There isn't much comfort there. But there is the good feeling of belonging to the elite of problem solvers and of being deep in the ranks of the people that get things done.

The goal is worth the pain and as it is said there is no gain without pain. Logging so often is a business of taking it out of your hide to put it in your pocket.

It is being alive. Alive in the deepest and best ways possible. Alive and kicking and scrambling with action directed toward a worthwhile goal. Alive and pro-



FINLEY HAYS

ducing. Producing something that is both difficult and challenging. Producing something that few people can do, or will do. Doing it during the good weather, thru the bad weather. In the warm days, hot days, wet days and cold days. Working when most won't. Doing

it the hard way when that is the only way. Trading your bed for a lantern and heading out for the tall and uncut long before your neighbors will come awake.

Whatever a man has got in strength and alertness and muscle power he spends every day in the woods. Some of the work isn't as hard as other kinds but it is all demanding in its own way. With all the modern and mighty machinery available to us today it still takes a two legged man to manipulate the cliffs and steep slopes. He is the one who can do it and who does do it and at times he is the only one who can and will do it. Machinery is great --- but limited. When it gets too steep and rocky for the machines the logger takes over and packs in his Chain Saw or pulls the haywire around the setting and gets out the logs.

Yes --- it is terrific to have a job, a great job, a job that is difficult, demanding and rewarding.

### TRAVELS

During the past month I've had some very good trips. One to

(Continued on Page 7)  
**See "Rigging Shack"**

## IN THIS ISSUE



**ON THE FRONT:** The John Deere 2454D with Waratah 623C head makes short work of long stems near Grangeville, Idaho. It's operated by B J Snyder.

See "Forest Focus" starting on Page 8

## 4. RIGGING SHACK

"Classic" From November 1982 by Finley Hays

## 8. FOREST FOCUS

ELK MOUNTAIN LOGGING - GRANGEVILLE, ID. by Brandon Hansen

## 22. AS WE SEE IT

## 23. SUMMARY JUDGEMENT

"HORSEFEATHERS" RULED THE JUDGE

by William Perry Pendley

## 22. CONCERT AT CAMP 18

## 26. IRON MART

## 28. SHOW AND SELL

## LOGGERS WORLD

Published by LOGGERS WORLD LLC

Founded in 1964 by Finley Hays

Phone (360) 262-3376



Member and Supporter of the  
American Loggers Council Since 1994



PUBLISHERS.....Kevin & Nancy Core  
EDITORS EMERITI.....Finley Hays, Mike Crouse  
EDITOR/WRITER.....Brandon Hansen  
ADVERTISING.....Kevin Core  
OFFICE MANAGER.....Nancy Core

POSTMASTER: Send address changes to:

LOGGERS WORLD LLC,  
P. O. Box 1631, Chehalis, WA 98532-8425

E-Mail: [logworld@aol.com](mailto:logworld@aol.com)

SUBSCRIPTION RATE (In U.S.A.):  
\$25.00 per year; Two years for \$50.00

LOGGERS WORLD LLC cannot and does not assume responsibility for the contents of any advertising in Loggers World. The representations made by advertising is the responsibility of the advertiser and not Loggers World. Loggers World does not knowingly accept advertising that is false or misleading. The limit of Loggers World liability in case of a mistake made in advertising copy by Loggers World will be the charge of the actual space containing the error or less for that particular advertisement



**DOOSAN****Authorized Dealer**

Sales, Parts & Service  
Your #1 Established Forestry Equipment Dealer

**Cascade Trader has a  
Complete Line of new  
Doosan Log Loaders, Excavators  
& Wheel Loaders for your  
Logging & Construction Needs!**

**Cascade TRADER Inc.**  
EQUIPMENT SALES - LOGGING & CONSTRUCTION



**Ask  
About Our  
Special Financing:  
Up to 60 Months**

All offers  
subject to credit approval



Thunderbird TMY45, recent work,  
includes dolly .....\$85,000



Doosan DX300LL-5 Log Loader,  
NEW IN STOCK



CAT 980G, Medford Log Forks .....  
\$59,500



Thunderbird  
TSY-6140  
Swing  
Yarder,  
now in stock,  
must see!  
\$312,000



DOOSAN DX85R Excavator  
New Inventory



New DOOSAN DL220-5 Wheel  
Loader - NEW IN STOCK



DX300LC-5 Excavator  
NEW INVENTORY

**LOG LOADERS**

CAT 235C Log Loader, Pierce Boom .....	\$17,500
CAT 325L Log Loader.....	POR
CAT 330CL Logger, fresh rebuild.....	POR
CAT 568 Log Loader, 2012 .....	POR
CAT 568LL Log Loader, 2011 .....	POR
DOOSAN DX300LL, well maint .....	\$115,000
DOOSAN S300LL Log Loader .....	\$85,000
HYUNDAI R290LC Log Loader .....	\$115,000
HYUNDAI 320LC-9 LL, low hours.....	\$225,000
JD 892D Log Loader.....	\$34,500
JD 200LC LL, Forestry Cab .....	\$49,500
JD 3554 Log Loader, rear entry.....	POR
JD 3754 Log Loader, 2012 .....	POR
JD 3754 Log Loader, 2014 .....	POR
KOBELCO SK200LC Log Loader .....	\$34,500
KOBELCO SK210LC Log Loader .....	\$64,500
KOEHRING 6625 Log Loader .....	\$18,000
MADILL 3800/Southstar Felling Head.....	POR
THUNDERBIRD 1238 Log Loader .....	\$39,500

**FELLER BUNCHERS, PROCESSORS**

CAT 322C/Pierce 3348 Stroker .....	\$55,000
CAT 330CLL/HRH624C .....	POR
CSI Pull Thru Delimber/Processor, nice! ....	\$38,500
JD 3754 w/Southstar QS605 .....	POR
KOBELCO SK290LCCLL, Rear entry,Keto 800	\$125,000
KOMATSU PC128/Log Max Harvester .....	\$39,500
KOMATSU PC220LC/Pierce 3348 Stroker .....	\$119,500
LINKBELT 350X2/Waratah HTH624C.....	\$117,500
MADILL 2250B, Quadco 360 .....	\$110,000
MADILL 2800/Denharco DM3500.....	\$35,000
THUNDERBIRD 1236/Denharco DM3500 .....	POR
TIMBERJACK 2618 w/Keto 525 .....	\$29,500
TIMBERJACK 2628, Bar Saw.....	\$29,500
WARATAH HTH-623C, NEW Inventory .....	POR
WARATAH HTH-624C.....	\$59,500

**TOWERS & YARDERS**

KOBELCO SK300LL- Tong Tosser/Yoder .....	POR
LINKBELT 370LX LL "Yoder" .....	\$112,500
MADILL 071's, 3 to choose from .....	POR
PSY-200, Self-Propelled, nice yarder .....	\$199,500
SKAGIT BU-80C,T-90 Trailer Mount .....	\$32,500
SKAGIT BU-94/T-100 Trailer Mount.....	POR
SKAGIT GT3, updates .....	POR
THUNDERBIRD 6140 Swing Yarder, nice ..	\$312,000
WA 78-40 Swing Yarder .....	\$42,500
WA 127W, T90, Trailer Mnt, reduced.....	\$24,500
WA 78SL, nice .....	POR
WA TL6 3-Axle SP, 50' Boom .....	\$29,500
WESTCOAST HAWK, must see .....	POR

**EXCAVATORS/DOZERS/GRADERS  
WHEEL LOADERS/SKIDERS**

CAT 14E Grader .....	\$14,500
CAT EL240B Excavator .....	\$18,500
CAT 515 Grapple Skidder - in soon .....	\$55,000
CAT 980GII, Medford Log Forks.....	\$59,500
DOOSAN DX140LC-3, low hours.....	\$135,000
DOOSAN DL400 Wheel Loader .....	POR
FIAT-ALLIS 8, Winch/Arch .....	\$18,500
JD 200D Excavator .....	\$45,000
JD 2454D Rd Bldr, Excav, low hrs.....	POR
JD 892D Excavator .....	\$39,500
LINKBELT 3900Q Excavator, Bucket/Thumb.	\$27,500
MADILL RB500 (180 size) Excav, guards ....	\$45,000
TIMBERJACK 404 Skidder.....	\$8,950

**CARRIAGES & MISC**

CAT HF201 22" Disc Saw, tilt, low hrs.....	\$22,500
CEC Portable Jaw Crusher, Trailer Mnt .....	\$85,000
DANZCO PT20 Pull Thru Delimber .....	\$10,500
DIAMOND Z 1460 Tub Grinder, 2010.....	\$289,500
EAGLE Super Eaglet, recent work .....	\$35,000
GENERAL Turkey Rack, like new .....	\$9,000
HAHN Harvester, 2-axle w/Dolly.....	\$17,500
KETO 804 Processing Head .....	POR
OLATHE 10' Tub Grinder, reduced.....	\$29,500



DOOSAN Log Loaders  
LOTS OF INVENTORY!



Doosan DX225LL-5 "Road  
Builder" .....P.O.R.



CAT 320C/WARATAH HTH-622B.  
\$89,500

**KETO • WARATAH • SOUTHSTAR • EAGLE CARRIAGE**

Rich Lennox  
Shannon Pesicka  
Mike Duch

(360) 508-0192  
(360) 507-0542  
(360) 880-6955

Jim Wark  
Cooper Brunoff  
John Griffin

(360) 623-5219  
(360) 880-7534  
(425) 210-9702

Tony Foglio  
Colton Moorhead

(360) 520-7084  
(360) 827-0262

Traci Brunoff • Sales Coordinator: (360) 880-7531

[www.cascadetrader.net](http://www.cascadetrader.net)



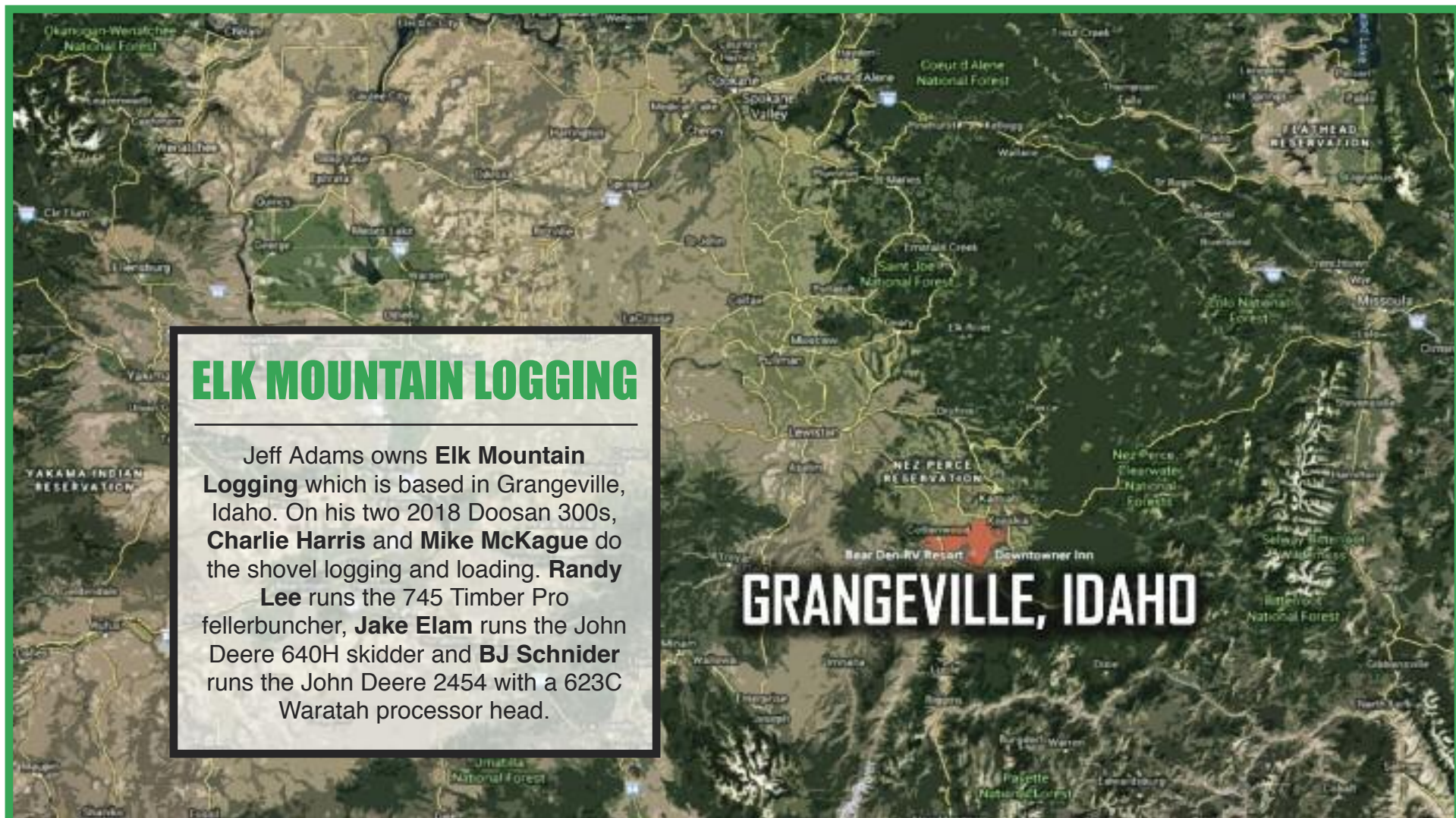
Find us on  
Facebook

**(360) 748-1182**

fax (360) 748-1198 •  
Located at Exit 79 off I-5  
1380 NW State Ave., Chehalis, WA 98532



# REPORTING IN FROM...



## ELK MOUNTAIN LOGGING

Jeff Adams owns **Elk Mountain Logging** which is based in Grangeville, Idaho. On his two 2018 Doosan 300s, **Charlie Harris** and **Mike McKague** do the shovel logging and loading. **Randy Lee** runs the 745 Timber Pro fellerbuncher, **Jake Elam** runs the John Deere 640H skidder and **BJ Schnider** runs the John Deere 2454 with a 623C Waratah processor head.

## Free Ball Cap

While supply lasts, get a 100' of OREGON® 3/8" square-ground chisel saw chain for only:

**\$279**



Plus, mention this ad and we'll throw in a **FREE** collector's ball cap with your roll of chain.

Get yours today!

**MADSEN'S**  
SHOP & SUPPLY INC.  
Centralia, Washington

☎ 360-736-1336  
Information Calls  
☎ 800-822-2808  
Direct Order Line  
[www.madsens1.com](http://www.madsens1.com)

## GRANGEVILLE, IDAHO

Grangeville, Idaho is the county seat of Idaho County, Idaho with a population of 3,139. With the Nez Perce National Forest, Gospel Hump Wilderness, Hells Canyon and rivers in the area of the city, the town is a popular outdoor destination while many residents in town work in the timber industry. The U.S. Forest Service is a major source of employment for the area.



## Need Financing? We Can Help!

We Finance Loaders, Trucks, Skidders, Trailers, etc.

- Working capital available
- Start-up program for under 2 years available
- 1st payment only
- 3,4,5 year financing
- 150K application only
- Finance any equipment or attachment...no age requirement
- Personal one on one financing process
- 27 years' experience in the financing industry

*Isn't it time you made an investment in your machinery?*

**Call Doug Powell Today!**

**888-223-2600 • [dee@fullcirclellc.us](mailto:dee@fullcirclellc.us)**

**After hours cell: 509-393-5111**

11 Spokane Street - Suite 306, Wenatchee, WA 98801 • [www.fullcirclellc.us](http://www.fullcirclellc.us)





# CC HEAVY EQUIPMENT

2005  
Hitachi  
ZX 330 LC  
Excavator  
Equipped  
With A 2012  
Waratah  
623C,



Processor has much lower hours-  
excellent condition. Cab Guards,  
Catwalks, Machine is Straight and  
Ready to Work! .....  
.....NEW PRICE \$149,000



Caterpillar D5H High Track with  
Esco Swing Boom and Grapple.  
Meter reads 3200 Hours. 70% U/C  
with Tri-Tracks. Fresh Paint and  
Decals. Serviced and ready to go  
.....\$99,000



1999  
Timbco  
445D  
with  
War-  
atah  
230  
Pro-  
cessor

Head. 10,500 hours, Runs  
Great! 8.3 Cummins. Strong  
U/C, Nice Processing Setup  
with Zero Tail Swing ...\$62,500



2009 Koller K301T Yarder and 1995  
John Deere 7600 Tractor, Excellent  
Maintenance, Comes with Koller  
Carriage and Talkie Tooters, 1,200  
Ft. of 5/8" Sky Line, 1,700 Ft. of 3/8"  
Skid Line .....\$72,500



1993 International Service Truck, (NO  
CDL Required). IMT 8000 lb Crane, Miller  
Bobcat 250 Welder, Compressor. Navistar  
C190TF Diesel with 6 speed Manual  
Transmission. Hydraulic Brakes, GVW  
under 20,000, Reading Tool Boxes, LED  
Work Lights, Vise, Outriggers, Etc. Nice  
Truck, Recent Front End Work. Ready to  
Go.....\$24,500



1975 Caterpillar D7G Dozer, Semi  
U Tilt Blade, Double Barrell Ripper  
with 2 Shanks and Stump Splitter.  
85%+ Cat SALT U/C. No hour  
meter installed. Excellent Cat!.....  
.....\$59,000



017 KMC Track Skidder with 836  
Original Hours. Young Swing  
Boom and Grapple. Cummins  
Engine. Machine is like NEW.....  
.....\$319,000



#1 Selling firewood processor  
in the world. Trailer mounted  
mobile platform, live deck, 25  
ton splitting ram, produces 3  
cords an hour .....  
.....Starting price \$35,000



2008  
Madill  
2250C  
Feller  
Buncher  
w/New Saw  
Disc, Arbor

Bearings, Butt Plate on Head. Has a  
New Front Window, Water Radiator &  
Air to Air Radiator. New Fan, Fan  
Shroud & AC Condenser. 1000 hours on  
New Motor. 24 volt pump installed for  
hood so motor doesn't have to be run-  
ning to lift the hood. New bottom rollers  
in the last 600 hours. 1011 hours on  
motor 14086 on machine.....\$169,000



1973 West Coast  
Tower, Major  
Modifications, Cummins  
Big Cam III, 400 HP, 4  
Guylines, 60' Tower,  
Terex U/C. Just Done:  
Transmission Driveline,  
Hydraulic Pump, Oil

Cooler, Frictions, Witchitas Installed,  
Shift Plate, Drive Chains Rebuilt, All  
Cooling & Filter Systems Updated (Parts  
available at Napa, Etc.). Receipts & war-  
ranty paperwork available for recent  
repairs & upgrades. Yarder comes w/ALL  
lines & extensions. Boman M5H avail-  
able at additional cost .....\$125,000



2003 Timberjack 950 Feller  
Buncher with 24" Koering  
Hot Saw. New Saw Motor on  
Head .....\$55,000



2012 Kobelco SK350 Log  
Loader, 5,400 Hrs., Jewell  
63" Grapple, U/C 70%+,  
Nice Machine! NEW  
PRICE!!!.....\$185,000

**SEE ALL OF OUR LISTINGS AT [WWW.CCHEAVYEQUIPMENT.COM](http://WWW.CCHEAVYEQUIPMENT.COM)**



2007 Link Belt 350 log  
loader with 2008 Waratah  
624C processing head.  
18605 hrs. New seat. UC  
70%. Currently working.....  
.....\$149,000



2005 Volvo  
EC210B  
LC  
Excavator.  
Comes w/1  
bucket &  
thumb.  
Has  
hydraulic  
quick  
connect.  
10,000hrs.  
\$59,000



Terex 82-20B Dozer with U  
Blade, Hyster Winch,  
Young Arch and Stump  
Splitter. Good U/C, Runs  
Great, Nice Terex Cat!.....  
.....\$24,000



2007 Kobelco SK210LC Log  
Loader/Tong Tosser. New  
engine in 2013 w/6000 hrs.  
Rotex replaced 18 months  
ago. Rebuilt winch drum. New  
rails & rolls. Currently work-  
ing! .....\$95,000



2008 Kobelco SK260 Logging  
Processor with Waratah 622B 4x4  
head. Saw motors and cylinders  
replaced in head. New rotex in  
2016. Will come with new rails and  
rollers. Machine is currently work-  
ing!.....\$159,000



2017 John Deere 2656G Log  
Loader, 1800hrs, Rear entry  
cab.....\$300,000



2014 John Deere 2954D Log  
Loader, Pierce Grapple, Nice  
Machine, Currently Working.....  
.....\$299,500



Skylead  
Yarder with  
2010 Super  
Eaglet, 5.9  
Cummins  
with Allison  
Trans.,  
Comes With  
All Lines,  
Currently  
Working  
\$119,000

**CCHEAVYEQUIPMENT.COM**

Dallas/Salem Rickreall, OR

Carl Cornthwaite • 503-507-7230 • [carl@ccheavyequipment.com](mailto:carl@ccheavyequipment.com)  
Lincoln Cornthwaite • 971-901-1333 • [lincoln@ccheavyequipment.com](mailto:lincoln@ccheavyequipment.com)

## Rigging Shack

(Continued from Page 2)

British Columbia, one to Idaho to visit Bob Shook's operation out of Elk River and one to Atlanta, Georgia and surrounding area to see a demonstration of the whole line of John Deere logging equipment.

One of the best things to happen was to get to visit Dick and Barbara Younts at Ringgold, Georgia where Dick is a representative for Salem Equipment.

They are terrific people.

Another great thing was to get acquainted with Berry College of Rome, Georgia. They have 30,000 acres and most of that in trees. It is on or in this forest that John Deere demonstrates their equipment. Had the fun of being shown the campus and finding out more and more about this college that was started by Martha Berry about the turn of the Century.

She started out teaching some of the Mountain Children in Sunday School. Soon she had started three Sun-

(Continued on Page 26)  
**See "Rigging Shack"**

**PACIFIC FIBRE PRODUCTS**  
**WANTED**  
Alder, Maple, Douglas Fir, Cedar  
Hemlock, Cottonwood  
**PULP LOGS**  
Land & Timber or Timber Only  
Paul Hadaller • 360-431-9661  
Rob Vance • 360-355-2817  
P.O. Box 278, 20 Fibre Way, Longview, WA.  
Office: 360-577-7112  
**WE ARE NOW PURCHASING  
LOGS IN MOLALLA, OREGON!**

**Oliver-Hammer  
Clothes Shop**  
**Clothing the  
Working Man for  
97 Years**

Wesco Caulk Boots, Redwing,  
Carolina, Carhartt, North Star  
Gloves, Hickory Shirts,  
Logger "Riggin" Jeans and a  
Whole Lot More

**(360) 855-0395**  
821 Metcalf,  
Sedro Woolley, WA 98284



# FOREST FOCUS

Elk Mountain Logging takes on the broken ground of central Idaho



## CLEANING UP

Cleaning up the log deck with the Doosan DX300LL is BJ Schnider, getting ready for the next truck.

*Jeff Adams tackles the gridiron along with running a logging company*

**PHOTOS BY KEVIN CORE  
STORY BY BRANDON HANSEN**  
*For Loggers World*

After winning six NFL titles and two Super Bowls, Vince Lombardi is widely regarded as one of the best football coaches in history. He has been constantly quoted and used as the example of someone focused on success.

For Elk Mountain Log-

(Continued on Page 9)  
**See "Elk Mountain"**

## WRECKING LOGGING EQUIPMENT

EXCAVATORS • CRAWLER TRACTORS • ROCK TRUCKS • LOADERS • GRADERS



Parting Out

2007 Cat 324DFM



Parting Out

2006 Deere 450DLC



Parting Out

2006 Cat 950G II



Parting Out

2013 Deere 225DLC



Parting Out

2007 Komatsu PC200LC8



Parting Out

1996 Hitachi EX400LC3



Parting Out

2007 Kobelco SK260LC8



Parting Out

2004 Deere 953G



Parting Out

2003 Cat 325CFM



Parting Out

2004 Deere 200CLC

## FRALEY TRACTOR, Inc. WRECKING DIV.

(509) 884-7117 • FAX (509) 884-3959 • fti2@nwi.net • 1850 GRANT RD., E. WENATCHEE, WA 98802

### CAT EXCAVATORS

314C; 315BL; 320LL; 320BL; 320C;  
322CL; 324D; 325C; 325L; 330BL;  
345BL; 345CL; 350L

### CAT TRUCKS

D25D; D250E; D300E; D400D

### CAT SKIDDERS

D5H; D4H; 525; 527; 525C

### CAT SCRAPERS

615,621E

### CASE

821; 9030B; 9040B; 9050; 9050B;  
9060B

### GROVE

RT745

### LINK-BELT

210LX; 240LX; 290LX; 350LX;  
370LX; 5800 CII-Q; 6000Q

### KOBELCO

ED150; SK290LC6; SK200LC IV;  
SK400LC IV; SK330

### JOHN DEERE

120C; 135D; 160DLC; 200DLC;  
225DLC; 2554; 330CLC; 350DLC;  
450DLC; 550H; 544J; 544G;  
600CLC; 624G; 644H; 644G; 648GII;  
710D; 750B-C; 744H; 753GL;  
772BH; 844J; 850J; 992D-ELC

### SAMSUNG

SE 350LC2

### TIMBCO

T425B-C-D; T445B-C-D; T445EXL;  
475D; 475EXL

### TIMBERKING

TK722; TK732; TK1162

### KOMATSU

PC120-6; PC130-6; PC138US-2;  
PC220LC7; PC160LC-7; PC200LC-6;  
PC220-6E; PC228USLC-3;  
D155AX5; D355A; WA 200-1;  
WA180-1; WA400-1; WA320-1;  
WA180-3; WA250-3; WA500-1-3-6

### TIMBERJACK

608; 628; 1210B; 2628; 1270B

### HITACHI

ZX27U; ZX120; EX150; EX160;  
ZX200LL; EX200-5; EX200LC3;  
EX220-3; ZX270LC3; ZX330  
ZX350LC; EX330LC5; EX400LC3;  
ZX450LC; EX550LC5; EX700;  
EX750-5; ZX850LC3

### VALMET

EX10; 500T; 860; 892

### VOLVO

A25C 6x6 Rock Truck; L330C;  
L120E; L180C; L220E

**WE BUY HEAVY EQUIPMENT FOR PARTS AND RESALE...CALL US!**

Visit us on the web at: [www.fraleytractorinc.com](http://www.fraleytractorinc.com)





## Elk Mountain

(Continued from Page 8)

ging owner Jeff Adams, who is also head coach of the Grangeville, Idaho football team, Lombardi's lessons really resonate with him. From having a focus in life, learning from failure and having a strong work ethic.

Along with that, his dad, Darrell, was a big mentor in how Adams lives his life. Something that he told his

son was to pick one thing to be good at.

Adams has put his efforts to the things he finds most important in life: logging, football and family.

Elk Mountain Logging in Grangeville is an operation of five loggers and enjoys the services of six owner operator truck drives to keep the logs moving to the mill.

Currently he has several pieces of iron. On his two 2018 Doosan 300s, Charlie

Harris and Mike McKague do the shovel logging and loading. Randy Lee runs the 745 Timber Pro fellerbuncher, Jake Elam runs the John Deere 640H skidder and BJ Schnider runs the John Deere 2454 with a 623C Waratah processor head.

As a third generation logger, Adams grew up around the industry as his dad Darrell ran a side in the 70s.

Adams went off to college at Idaho State University where

he competed in Track and Field.

After starting his family, Adams wanted to get back to Grangeville to raise his kids in what he said it the best place to grow up and he went into business with his dad.

Darrell bought a CAT in 1999 and the two set out into the woods. Adams would buck and his dad skidded with the

(Continued on Page 11)  
**See "Elk Mountain"**



2005 ZEHR HG4000 GRINDER, early Diamond Z, 2009 CAT C27, Tier II, 1,050 hp, remote, stacking conveyor, 8 NEW tires, good brakes, twin-disc clutch, hammer-mill approx. 62" x 17".....\$129,500



2002 PRECISION HUSKY 66-23 CHIPPER, Husky XL-175 loader, CAT 3412, 700/750 hp, Tier I, joy sticks, twin-disc clutch, feed table w/feed chain, cab, 12 NEW tires, good brakes, fresh oil, new paint, recent injectors, one owner, was working daily, 11,141 hours.....\$99,500



1996 PETERSON 4400B GRINDER, CAT 3412 @ 800 hp, 3 axles, all new tires, twin-disc clutch, dual horizontal rams for feed, heavy rotor, good last clean older unit, approx 87,000 lbs. w/o tractor.....\$79,500



MORBARK 20 CHIPPER, new CAT C13 with 3,684 hours, 385 hp, Tier III, new tires, good brakes, lights.....\$69,500



2008 VERMEER BC2100XL CHIPPER, Cummins diesel, approx. 275 hp, new knives, clutches, PTO, hyd feed rollers, 5,227 hours, good for age and hours.....\$55,000

NEW HEEL RACK FOR CAT 330FM OR 568 FM, unused, some pins.....\$7,500

## MP! EQUIPMENT

INCORPORATED

Call Chuck  
**530-221-6760**

8537 Commercial Way, Redding, CA 96002

chuck@mp!equipment.com

www.mp!equipment.com



2014 JOHN DEERE 748H SKIDDER, dual-function boom, grapple, winch, direct drive, good 30.5 tires, tight center, runs well, 6,990 hours.....\$139,500



2013 JOHN DEERE 290G LC HYDRAULIC EXCAVATOR, Q/C, link style hyd thumb, good a/c, just arrived.....\$149,500



2012 JLG G12-55A 12,000 lb., prior rental, good condition, just arrived.....CALL



BTI SH550R Shear, second member, for 330-Size and up carriers, 1,600 Hours.....\$50,000



PROLENC SNUBBERS for skidders, in stock.....CALL



WASHINGTON 188 YARDER, Detroit 8V92T power, 4-axle carrier, standing skyline. This is a good, clean unit that was working as of 06/10/16. Consigned, call for location.....\$250,000

EAGLET CARRIAGE, w/controls available.....\$18,000



1996 CHRISTY 3DTK, 6-cyl Cummins, 2000' 3/4" swedge skyline, approx. 2000' 5/8" swedge mainline, haywire, guy lines, NO carriage, 75MHz radio system, approx. 6,500 original hours, mounted on Freightliner w/Cummins power, heavy 2-speed rear ends, biscuit suspension, good clean unit. Yarded logs until October 15, 2015. Owner is downsizing, consigned, call for location.....\$75,000



2004 TEREX TH842C REACH LIFT, 8,000 lbs, 42', 48" forks, very good foam-filled tires, Deere diesel, hours N/A, nice machine.....\$32,500



2008 CAT 14M VHP, 16' board, push block, rear ripper, good 20.5 tires, AC, Accugrade-ready, clean unit, Tier III, runs & shifts well, 8,155 hours.....\$155,000



2012 CAT 12M VHP PLUS, rear ripper, push block, 14' board, 14:00x24 tires, former county machine, sold new August 2012, 4,795 hours.....\$147,500



2008 CAT 140M AWD VHP PLUS, 14' board, rear ripper, 14:00Rx24 radials, 6x6, cab, AC, orig paint, 6,252 hrs.....\$129,500



2010 JOHN DEERE 770G, 14' board, push block, rear ripper, aux hydraulics, 17.5 radials, cab, air, fair paint, prior county unit, good machine, 7,633 hours.....\$109,500



2010 JOHN DEERE 770GP, 14' board, push block, rear ripper, Pilot controls w/steering wheel, aux. hydraulics for snow equipment, very good 17.5 Bridgestone-tires, cab, AC, NEW paint, prior county unit, 8,105 hours.....\$110,000



2012 CAT 120M2 AWD, 14' blade, push block, rear ripper, auxiliary front hydraulics, Tier 4, 14:00x24 tires, former government machine, nice, 5,012 hours.....\$145,000

CRISP LOG FORKS/GRAPPLE, fits CAT 950B/E/F, good for age.....\$2,500



2010 GENIE Z135/70 BOOM LIFT, prior rental, 2111 hours, Deutz diesel, 4x4, foam filled tires, 135', JIB.....\$62,500



2013 LINK-BELT 145 X3 Spin Ace, Esco bucket, Isuzu engine, pattern changer, cab, Tier 4, AC, good clean unit....\$79,500



2005 LINK-BELT 290LXTL w/log max 7000 processor head, log loader front, high & wide undercarriage, tall cab, just off job, recent trade-in, call for location.....\$115,000



2012 JOHN DEERE 210G LC, hydraulic QC, hydraulic thumb, 32" tracks, good unit, 4,653 hours.....\$125,000



2013 VOLVO EC35C, new bucket, new Amulet thumb, blade, off-set boom, good clean machine, prior rental, 1,406 hours, .....\$27,500



2015 CAT D4K2 XL 6-way dozer, rear ripper, open ROPS, wired, fair undercarriage, 2,087, just off job.....\$89,500



## HELLO, MR. BULL ELK

Mr. Bull Elk leads his harem of at least 7 cows through the fog along the top of this hill. We couldn't tell exactly how many points he was sporting on his antlers but he is a big boy. Sights like this are one of the reasons we love what we do.



## THE FAMILY

Jeff Adams poses with grandbaby Stevie, Lanie, Kinzley, Brigelee, wife Trisha and Lexie.



# OREGON CHAINSAW SHOP

[www.oregonchainsawshop.com](http://www.oregonchainsawshop.com)

Who Is Oregon Chainsaw Shop?

Oregon Chainsaw Shop is the online store for L & L Equipment, Inc. dedicated to bringing you the toughest and most durable chainsaw products on the market.

### CHECK WITH US WHEN YOU NEED:

- |             |              |
|-------------|--------------|
| ✓ STIHL     | ✓ SUGIHARA   |
| ✓ HUSQVARNA | ✓ HARVESTER  |
| ✓ OREGON    | BARS & CHAIN |



# 503-623-5116

Or stop by our full service shop at  
1145 SW Oakdale Ave.  
Dallas, Or 97338

L&L EQUIPMENT



## ROTHENBUHLER ENGINEERING

HOME OF THE *Talkie Tooter*

**MARK III WHISTLE CONTROL**  
now in the 72 MHz band, get away from  
congested frequencies with a proven design



**CARRIAGE CONTROLS**  
rugged radios that can control most  
manufacturer's carriage from the ground or  
the yarder

**Rugged, Durable,  
Industrial Radio  
Equipment since 1946!**

P.O. Box 708, 524 Rhodes Rd  
Sedro-Woolley, WA 98284-0708  
**Telephone 360-856-0836**  
[www.talkietooter.com](http://www.talkietooter.com)



## Elk Mountain

(Continued from Page 9)

CAT. They did private timber jobs before working up to state and tribal ground.

Adams credits his dad along with Brigid Maley and Roy Marshall as three important mentors that helped bring him along in the industry.

In 2001, they decided to go

mechanical with the company, buying a used processor and fellerbuncher. This is when they slowly started upgrading equipment as Adams wanted to try and keep his crew in the best seats possible.

"My dad let me sink or swim and if I didn't go through the lessons and failings that I did, I wouldn't be where I am now," Adams said.

Adams father passed away

in 2009 and the Great Recession hit, putting Adams' logging company in trouble. He had to upgrade and get even more modern with new machines.

"I've been as big as 8-10 guys and I've tried a bunch of different things in the past 17 years," Adams said. "Five guys is as big as I think we want to be. They are some great loggers, loyal and good

men and there is not a lot of turnover in the company."

From 2013 to 2015, Adams bought five machines, one for each member of his crew and invested over a million dollars. He said he surrounded himself with good people and treats them well. Adams tries to make sure his guys see their family every night and makes sure his machines are

(Continued on Page 17)

See "Elk Mountain"

LOGGERS WORLD NOVEMBER 2018

11

## CALL US FOR ALL YOUR DOOSAN NEEDS

Ask about our  
Finance and Lease  
Specials!

**DOOSAN**

Authorized Dealer

- Parts
- Service
- Sales
- Rental
- Lease



Serving the Northwest Since 1901

**(503) 282-2566**

Fax: (503) 282-1755

4800 N.E. Columbia Blvd., Portland, Oregon 97218

**(541) 636-3660**

541-357-4542

9404 Highway 99 N., Eugene, Oregon 97401

feenaughty.com

## FOR SALE



**2006 T800 Kenworth, Short Logger Package, #5,** Cummins ISX CM870, Jake Brake, 18 spd, Single spd Eaton rear-ends (D46-170HP), 4:10 gears w/locker, Hendrickson Haul-Max walking beam suspension, 3/8" steel frame, 267" wheelbase, 4 axle truck, 2 axle Whit-Log trailer, Vulcan electronic scales ..... **\$129,000**

**541-863-1501**


## EQUIPMENT DECAL SETS

*Replacement Decals for your: Forestry, Construction, Mining Ag & Industrial Equipment.*

Prompt ♦ Knowledgeable ♦ Reliable

[www.QuipCal.com](http://www.QuipCal.com)

Equipment & Truck Fleet Graphics  
Your Logo on your Equipment

or  for a prompt quote

info@CustomServicesCompany.com

**215-536-5339**

## END GREASING FRUSTRATION

ORDER ONLINE  
OR CALL



**GREASE GOES IN,  
NOT ON, THE MACHINE**

[LOCKNLUBE.COM](http://LOCKNLUBE.COM) | 603.795.2298





### CHARLIE HARRIS AND BJ SCHNIDER

(LEFT) Charlie Harris, operator of the Doosan DX300LL, has been logging 23 years. He was politely laughing at the photographer's jokes. (RIGHT) BJ Schnider takes a short break from operating the John Deere 2454D processor with Waratah 623C processing head.



Introducing

**NAS**   
NORTH AMERICA SUPPLY

[www.NorthAmericaSupply.com](http://www.NorthAmericaSupply.com)



Your new link to [www.tirechainsrequired.com](http://www.tirechainsrequired.com) and [www.harvesterbars.com](http://www.harvesterbars.com). These two sites are coming together to offer you all the same high quality brands you've come to know and trust in one convenient online location. Tire chains, saw bars, saw chain and hot saw teeth delivered straight to your door.

Visit or call toll free to  
speak with a rep at  
**1-855-255-0871**

[sales@northamericasupply.com](mailto:sales@northamericasupply.com)  
Logging and industrial supplies,  
wire rope, chain and  
accessories coming soon!

**American  
Chains**



**CARLTON**

**Ballantine**

## Appelo Archives Center

Logging Museum, Library and Bookstore



Our best selling book:

"When Logging Was Logging" is  
available for purchase in store,  
online, and over the phone!

1056 SR 4 Naselle, WA 98638

360.484.7103

[info@appeloarchives.org](mailto:info@appeloarchives.org)

[www.appeloarchives.org](http://www.appeloarchives.org)

The Appelo Archives Center specializes in preserving and  
presenting the history of the Naselle-Grays River Valley  
area of SW Washington. The Archives offers a museum,  
local genealogy, library, archival material, and bookstore.

**Open Tues.-Fri 10am to 4pm and Sat. 10am-2pm**

Photo:

Deep River Logging Co.'s  
Shay No. 5 at the Deep  
River log dump, 1912.





# **PRESENTING THE NEW ACME HYDRAULIC GRAPPLE CARRIAGE**

- Hydraulic Grapple with 360° Rotation
- All Rugged T-1 Steel Construction
- Only 1800 Lbs. with Grapple
- Grapples Available in Multiple Sizes
- Air Cooled Kohler Diesel Engine
- Talkie-Tooter® Digital Radio Controls
- Integrated Wireless Camera System
- Same ACME Durability and Reliability You've known for over 20-Years

**ACME Manufacturing, Inc.**

90099 Prairie Road—Eugene, OR 97402

(541) 741-2200—After Hours: (541) 554-9414

See YouTube Videos at:

**[www.acmecarriages.com](http://www.acmecarriages.com)**







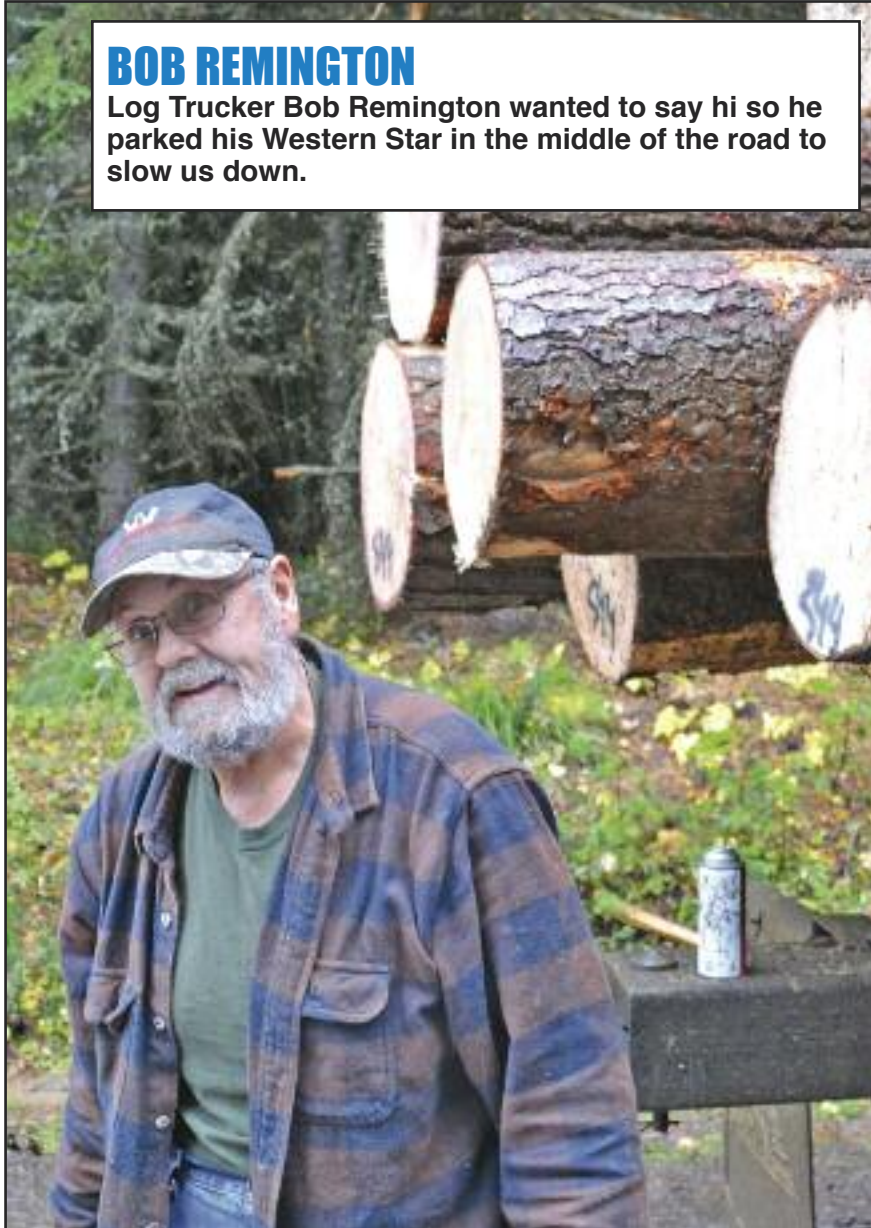
### JEREMY DOUGLASS

Elk Mountain Logging keeps this Jeremy Douglass truck busy on a regular basis. This truck is pretty clean considering how deep the mud was.



### BOB REMINGTON

Log Trucker Bob Remington wanted to say hi so he parked his Western Star in the middle of the road to slow us down.



## New! EAGLE RAPTOR



**NEW!**  
AARCOMM  
RADIO  
SYSTEM

We  
Also Have  
Eaglets,  
Super  
Eaglets,  
Eagle IV,  
Eagle V,  
Eagle VI  
& Claws  
Available

## EAGLE CARRIAGE & MACHINE

ECM CONTROL ON  
ALL NEW MODELS!

**(541) 963-4646**

Fax: (541) 963-3415

After Hours - Sam Baker  
(541) 805-9504 cell

62500 Commerce Rd, La Grande, OR 97850  
www.eaglecarriage.com



## Full Service Shop

Full Service Rigging, Saw Repair & Work Clothing

**www.LoggingSupply.com**

**Toll Free 1-800-488-3127**





### HAVING A CONFERENCE

Jeff Adams and Charlie Harris in conference about their next move since the weather has turned wet and it's getting close to elk season.

**MPI**  
EQUIPMENT  
INCORPORATED

Call Chuck  
530-221-6760

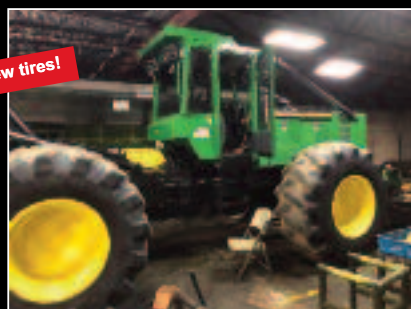
8537 Commercial Way  
Redding, CA 96002  
chuck@mpiequipment.com  
www.mpiequipment.com

## ARRIVING SOON JOHN DEERE 648H SKIDDER

Complete Rebuild by River Ridge Equipment



Will have new tires!



#### Rebuild Includes the Following:

- New John Deere Reman Engine
- Reman & Dyno Test Transmission
- Reman Front & Rear Differentials
- Reman Articulation Joint (Center Pins)
- Reman Front Oscillation Joint (Front Cradle)
- Reman Grapple and Yoke
- Reman Blade Shaft
- New John Deere Wiring Harnesses Throughout
- New John Deere Monitor
- New John Deere Main Hydraulic Pump
- New John Deere Steering Valve
- New John Deere Control Valve Bank
- New John Deere Hydraulic Accumulator
- New Pins and Bushings Throughout
- New Hydraulic Hose, Fittings, & O-Rings Throughout
- New John Deere Grapple Rotate Manifold
- New Air, Oil & Hydraulic Filters
- New Air Boots & Radiator/Cooler Hoses

- New Grapple Tong Metal w/1/2" Keystock and Internal Reinforcement Added
- New Batteries, Cables and Cutoff Switch
- New Air Conditioning Components & Lines
- New Paint of Entire Machine
- New Cab Step Straps & Cleats
- New Windows - All MR-10 Grey
- New Wiper Arm & Blade
- New John Deere Headliner (Main & Front)
- New John Deere Floor Mat
- New Exterior Decal

Reman/Replace/Repack or Line Bore as Needed:  
-Exhaust System, Limb Risers, Cab Doors & Handles,  
Bosses, Cylinders & Rods, Radiator & Coolers, Joystick Controls,  
Exterior Lighting, Cab Interior Components, Fire Suspension System If Equipped

Standard Warranty Coverages Provide:  
30-Day Full Coverage Warranty of Machine  
1-Year Warranty of Engine  
6-Month Warranty on PowerTrain/Hydraulic

**\$CALL!!!**

## MAXIMIZE YOUR RUNTIME

Advanced Technology  
Extensive Field Testing  
Cutting-Edge Materials  
Unmatched Durability



**GEM**  
*Chain Bar*



Harvester Bars - Harvester Sprockets - Chain  
Measuring Wheels - Bar Repair - Replacement Tips

**www.gemchainbar.com**  
**800-455-8471**





### LYLE ROWAN

Lyle Rowan and Jeff Adams are talking about where these logs are going while unofficial security dogs Chazmo and Timber keep the site secure.



### ARTWORK

This artwork is on the hood of Lyle Rowan's Western Star Log Truck. We like it!



### PATCH OF WORK

Charlie Harris has just about finished up shovel logging this patch with the Doosan DX300LL.

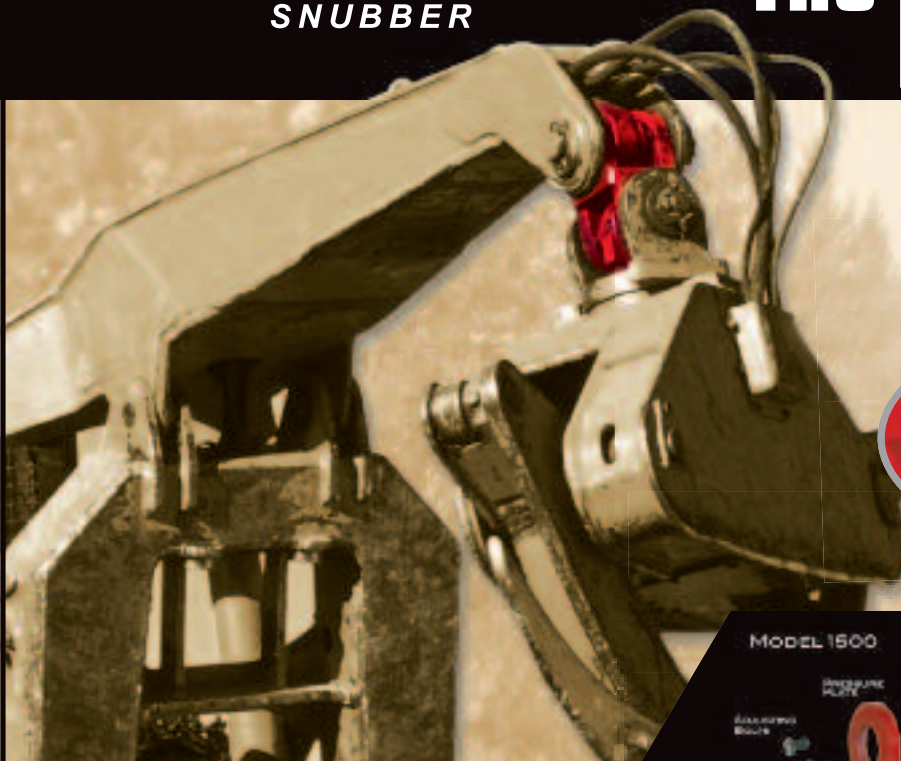
# CHECK US OUT ONLINE!

LOOK AT BACK ISSUES!  
CONTACT US!  
SUBSCRIBE!  
AND MORE!

# LOGGERS WORLD .COM

## PROLENC® SNUBBER

# The BEST For LESS



**KIT SPECIAL**  
Includes 2"  
Pins, Nuts &  
Locks



**PROLENC®**  
MANUFACTURING INC.

Contact your  
local dealer or

**Call 877.563.8899 or 250.563.8899**

[www.prolenc.com](http://www.prolenc.com)



## Elk Mountain

(Continued from Page 11)

in good running order so his operators don't also have to be his mechanics.

"You got to be able to keep them in a nice seat," Adam said. "They'll do general things like greasing and small maintenance, but I want them coming home not covered in oil and dirt."

Adams said he is blessed to have a young crew and a productive one as they kick out about 25 loads day.

"I'm proud of the job they do, it is some tough logging over here," he said. "There is a lot of broken ground to deal with."

Located in a central location in Idaho, the broken up ground means small landings for the loggers.

"We have got to get creative because we don't have a football field-sized landing," he said. "That's a challenge and we're into that kind of stuff."

Adams keeps the work out in front of his crew in a recovered and booming economy. He bids on jobs, keeps track of costs and runs parts when needed while also managing moving equipment and keeping the mills happy.

"My day can be on the phone a lot," he said.

He knows his crew are a bunch of hard workers and trusts them out on the jobsite. He learned many things from his dad, who told him your future lies in what kind of friends you keep.

"He was an old-time logger and when we started he trusted me a lot and let me learn a lot of lessons," he said. "One

thing I really learned was there is more than one way to skin a cat. I'm constantly learning different ways to do things."

Elk Mountain Logging started doing a lot of forest service and state lands but now does a good chunk of work for Idaho Forest Group. Adams said the company started doing a lot of tough strips for the company to earn their stripes.

IFG Resource Manager Bill Higgin also works with Elk Mountain Logging and Adams is able to keep his guys somewhat close to home when you're talking about a loggers commute.

"I really gage it if I can finish my cup of coffee before I get to work," he said, adding he likes to keep his guys between an hour and an hour

and a half from Grangeville.

Adams is also very appreciative of the owner operators that haul logs for them. He said they get along with his crew well

"We're really proud of the trucks we have coming onto our landing," he said.

Having great coaches in high school and college, Adams said he always wanted to give back to the community. So upon getting back to his hometown, he got into coaching. Adams has coached several sports but is now the head football coach of Grangeville and has a "Coach of the Year" award under his belt.

"I kind of treat it like running a logging company," he said. "We expect hard work

(Continued on Page 20)  
**See "Elk Mountain"**



# ZENDER EQUIPMENT COMPANY

**Contact: Kevin Zender (360) 319-7973**

**Rod Hansen (360) 520-6849**

**Bob Howell (541) 913-9559**

Email: kevin@zenderequipment.com

rod@zenderequipment.com • bob@zenderequipment.com

www.zenderequipment.com • Everson, WA

### LOG LOADERS

2016 JD 2954D LL, w/Jewell grapple. 4,400 hrs. very good cond. ....	\$287,500
1996 JD 690 ELC, w/Young grapple. w/tong tosser & winch, u/c 50%, 19,000 hrs.....	\$72,500
2011 Cat 568, w/T Marr grapple, 11,500 hrs, new u/c .....	\$199,000
2013 Cat 568, w/grapple & Summit yoder system .....	POR
1995 Cat 322, w/grapple & two HL-25 Pullmaster winches & Eaglet car .....	POR
1993 Cat 330A, w/two HL-25 Pullmaster winches & grapple.....	\$135,000
2000 Cat 325B, w/Jewell 58" grapple .....	\$42,500
2016 Komatsu PC 240LL, w/Pierce grapple, 4,750 hrs, excellent cond. ....	POR
2018 Doosan DX225LL, w/Pierce grapple, 1,000 hrs, like new cond. ....	\$245,000
2015 Doosan DX300LL, w/Pierce grapple, 6,000 hrs, good condition.....	\$240,000
2005 Hitachi 350LL, w/Jewell grapple, recent rblt motor & pump, low hrs on UC .....	\$85,000
2006 Madill 800, 7,200 hrs, xlent cond .....	\$125,000
2014 Link-Belt 290x2, w/Jewell 63" grapple, 10,500 hrs, new u/c, very nice loader .....	\$210,000
2012 Kobelco SK 350LL, w/Jewell grapple, new pump, good uc, 8000 hrs .....	\$120,000

### DELIMBERS

2011 JD 2154D, w/2011 Waratah 622B, 12,600, RB front, good condition rblt pump .....	\$125,000
2008 JD 2554LL, w/07 Waratah 622B, rebushed, pinned, drive motors, rblt valve, new JD motor, recent pump.....	\$89,500
2016 JD 2954D LL, w/2016 South Star QS 600, 4,600 hrs .....	\$457,000
2014 JD 3754D, w/2006 Waratah 624 Super, rear entry cab, 9,000 hrs on carrier ...	\$280,000
2007 JD 2554, w/Waratah 624 Super, 12,500 hrs, recent motor, pumps, good u/c, head is in good cond.....	\$129,500
2013 Link-Belt 350X2, w/13 Waratah 624C, 360 rotation, new drive motors, good u/c, RB frnt, 10,700 hrs, exc cond.....	\$225,000
2013 Link-Belt 290X2 LL, w/2013 Waratah 623C, 10,500 hrs, very good cond .....	\$220,000
2011 Link-Belt 290X2, w/2011 Waratah 623C, 11,000 hrs, RB front, new drive motors & knives on 623 .....	\$200,000
2015 Doosan DX300LL, w/Waratah 624 super, 8000 hrs on head, 6500 hrs on DX300, nice cond .....	\$270,000
2005 Waratah 624 Super, w/color screen, controls & hyd valve, recent wheel, bushing, xlent cond.....	\$40,000
1996 Valmet 500T, w/Valmet head and squirt boom .....	\$25,000
1998 TimberJack 1270B, w/TJ 762 head, good rubber, w/track chains and lots of spare parts for head.....	\$35,000
2004 Timberpro TB620 E, w/Logmax 7000, 12,000 hrs, good rubber.....	\$140,000
2003 Link-Belt 240 LX, w/Pierce 3348, good u/c, 3/4 top saw & butt saw, w/butt plate .....	\$40,000
2013 Cat 324DFM, w/DM 4550, xlent cond, 9,700 hrs, very nice limber.....	POR
2004 JD 2554, w/DM 4400, good running delimber, 18,800 hrs.....	\$65,000

### ROAD BUILDERS

2007 Case CX 330, w/new pin grabber, bucket & thumb, new paint, 7000 hrs .....	\$75,000
2000 Kobelco SK290, w/thumb and 2 buckets .....	\$75,000

### BUNCHERS

2008 Madill T2250C, Madill 2702, 360 head, rblt Cummins, rads, new disc, new rolls, 14,500 hrs .....	\$160,000
2013 Cat 522B, w/Cat 23" hot saw, good u/c, tight machine, recent motor & new pump, 9,200 hrs.....	\$250,000
2006 Prentice 1190T, w/Quadco 22" 360 rotation, Cummins power, new u/c, 6500 hrs.....	\$105,000
2016 JD 909MH, w/SouthStar FD 750 felling saw, 3,400 hrs, xlent machine .....	\$455,000
2016 JD 859M, w/JD 22" saw, 5,100 hrs, very nice cond .....	\$320,000
2011 Valmet 450 FXL, w/Quadco 22" 360 rotation head, new u/c, good pins & bushings & new pumps, 11,000 hrs .....	\$210,000

### SKIDDERS & DOZERS & GRADERS

2010 JD 748H, bunching grapple, dual frctn boom, rears 90%, front 30%, 1 set chains, 6000 hrs....	\$95,000
2006 Cat 545C, w/dual frctn boom, recent motor & diffs, good rubber & chains, 17,000 hrs.....	\$70,000
2003 Cat 535B, w/dual frctn boom, w/chains, decent rubber .....	\$50,000
2001 Cat 535B, w/dual frctn boom, w/chains .....	\$32,500
2005 Cat 525B, Single function boom, rblt trans & motor, good rubber & chains.....	\$55,000
1980 Mountain Logger ML 150, w/winch, good rubber, recent rblt trans .....	\$18,000
Cat D6D, w/winch, angle dozer, 90% U/C.....	\$35,000
1990 Case 1450B, good u/c, winch w/arch, 7000 hrs, nice dozer.....	\$35,000

### YARDERS & SWING YARDERS

Washington 78SL, 3 guyline, rblt Detroit 6V71T power, good u/c, nice cond, run all logging systems.....	\$107,000
Diamond D210, rblt Cummins, low hrs on trans, new bearings in drum set, boom & gantry, good lines .....	\$275,000
2006 Hitachi ZX350, w/two HL-25-4 Pullmaster winches, 16,000 hrs, c/w Acme 10 and ele. chokers, avl mid Oct.....	POR
2013 Cat 568, w/Summit yoder system .....	POR
1995 Cat 322, w/two Pullmaster HL-25 winches, grapple & Eaglet car .....	POR
1993 Cat 330A, w/two HL-25 Pullmaster winches & grapple.....	\$135,000
Skagit 737, trl mount, Cummins 855, rblt heavy duty 7 guyline tube, Boman 7900 avl., xlent cond.....	\$200,000
Skagit 737, trl mount, TY90, rblt Cummins 855, rblt trans, 7 guyline, good line, w/Eagle car .....	\$175,000
1982 Madill 071, Detroit 8V71T power, 4 guyline, 1'1/8 machine, water on all drums, good lines & stubs .....	\$90,000
West Coast Hawk, new trans, Cat power, updated cab, good condition, w/Eagle car & radios .....	POR
T-Bird TY90, T100 HD, 8 guyline, trl mount, Cummins KTA, low hrs on lines, good rubber, xlent cond.....	\$350,000
1996 T-Bird TTY 6170, Cat power, 5 guyline, nice yarder, new trans, good lines .....	\$585,000
1991 T-Bird TTY 70, recent Cummins NTC 450 power, 5 guyline, good lines .....	\$475,000
T-Bird TTY 70, Detroit 60 Series, Allison CTL60614 trans, 4 jacks, 24' frame, line load meter, good lines, xlent.....	POR
T-Bird TSY 255, Cat power, excellent cond .....	\$475,000
T-Bird TSY 255, Detroit 8V92T, c/w msp, good u/c, very good cond.....	POR
T-Bird TSY 6140, Cat power, 50' boom, very good cond.....	\$410,000
T-Bird TSY 50, Detroit 8V71T power, good cond.....	POR

### CARRIAGES

2011 Boman 7500, 2,600 hrs .....	\$50,000
2015 Super Eaglet, low hrs .....	\$45,000
Boman 9500, Just rebuilt .....	\$40,000





### RANDY LEE AND MIKE MCKAGUE

Randy Lee operates the fellerbuncher for Elk Logging. (RIGHT) Mike McKague is the operator of the Doosan DX300LL that was loading logs.



## Worker's Compensation for Loggers!

and your liability needs, too.

Many of you know us as the agency to see for Disability Income, Medical and Life Insurance... but we are a full-service agency with packages dedicated to the logging industry and related businesses. We have excellent markets for:

- Worker's Compensation
- Commercial General Liability
- Logger's Broad Form
- Commercial Auto
- Cargo
- Commercial Property
- Inland Marine (Your Iron)
- Bonds



*Photo courtesy of Jodie Compton*

**Call today for more information!**  
**866-514-3356 Toll-Free!**

360-274-6991 • 25 A Street SW, Castle Rock, Washington 98611

Wayne Lunday, LUTCF, CLU, ChFC

Aaron Lunday

Gail Mowrey, ACSR, CMSR, CRIS

Commercial Insurance Manager



A full-service, True Multiline Agency Dedicated to the Logging and related Industries  
Licensed in WA, OR, CA (OD43750), ID, MT & AK  
Commercial Insurance, Personal Insurance, Life, Disability Income,  
and Individual and Group Medical Plans



**CAT  
928G  
930G  
924G  
938F  
Parting  
Out**



**CAT D6C Parting Out**



**Clean 359 Peterbilt**, short hood,  
Cummins, 13 spd. **\$13,800**



**D4H CAT**, 6k Hrs., ripper, rops,  
screens, and extra guarding,  
**\$44,500**



**Denharco DM 3500  
Thunderbird 736D  
Parting Out**



**CAT  
D5H  
TSK  
\$57,000**



**DUKES  
PARTS & EQUIPMENT  
509-952-9223**

2015 S. 18th ST, Union Gap Wa. 98903 **Shop: 509-469-9420**

Check us out online: [www.dukesheavyequipment.com](http://www.dukesheavyequipment.com)



## LONG STEMS

Long stems were the daily special as Mike McKague churns out the wood with his John Deere 2454D and Waratah 623C processor.



**The PRODUCT you want...The PRODUCTION you need...**



**Crushing • Screening • Washing • Conveyors**



**...At a PRICE you can afford**



**CONSTRUCTON EQUIPMENT CO.**

**PARTS & SALE OFFICE**

18650B SW Pacific HWY  
Tualatin, OR 97062

**MFG PLANT**

540 SE Jefferson Street  
Sheridan, OR 97378

For over 35 years we have been  
dedicated to serving your  
parts & equipment needs.

Give us a call today!

**503-692-9000**

Visit us at [www.ceccrushers.com](http://www.ceccrushers.com)



CEC • MADE IN THE USA • CEC • MADE IN THE USA • CEC • MADE IN THE USA • CEC • MADE IN THE USA • CEC • MADE IN THE USA



(Continued from Page 17)

from the kids."

No doubt Lombardi's quotes and philosophy rings true for Adams in both coaching and logging.

He credits the great understanding of his crew to understand during football season he's a little bit busier but they know he's just a phone call away when he's at practice.

Helping him continue to upgrade his equipment is Cooper Brunoff at Cascade Trader, and Ralph Goodwin at Pape. Modern Machinery also helps with equipment. He also does business with GEM bar and chain, owned by Rick and Kim Peterson.

"It's great having GEM here in our community, they do a lot of things for our town," Adams said.

G and D is also a one-stop shop for any machining needs.

So along with making tackles on the football field, his crews also tackle tough ground in Idaho and Adams has found the perfect focus when it comes to logging.

"What I like about logging is the competition," he said. "I've always been a competitive guy and like the competition of how much wood you can produce and how efficient you can be as it. I also like being in the woods and it's just a new challenge every day."



### JEFF ADAMS

Jeff Adams stands beside his pickup after hauling the Loggers World photographer through the wet, cold muddy woods near Grangeville, Idaho.



### IN THE HUDDLE

Along with owning a logging company, Jeff Adams coaches the Grangeville football team.

## WANTED DEAD OR ALIVE

Chainsaw Parts  
Trimmer Parts  
Blower Parts



**CASH PAID 425-508-0102**

cheapchainsawparts@yahoo.com

## USED PARTS FOR

CONSTRUCTION & LOGGING MACHINERY

Crawlers, Loaders, Trenchers, Excavators,  
Backhoes, Skidders, Skid-Steers,  
Engines and Transmissions

*"Rely on our Experience - Est. 1967"*



**1-800-626-6046**

**Schaefer  
Enterprises**

4535 St. Rt. 3 N. • P. O. Box 136, Wolf Lake, IL  
www.sewlparts.com - parts@sewlparts.com

Most Major Credit Cards Accepted



## LOADING ON THE LANDING

Loader operator Mike McKague adds another grapple full of logs to the load. Mike said he really likes the Doosan DX300LL. Owner Jeff Adams mentioned that he makes a point to keep his employees working with good machinery. Happy employees means less employee turnover.



## KENWORTH T800 4-AXLE CHASSIS



### 7 Trucks

To Choose From  
YOUR CHOICE

**\$55,000**

Cummins ISX Engines,  
18-speed trans. (RTLO18918B),  
Single speed Eaton rear-ends  
4:10 or 4:11 gears w/locker  
**Hendrickson Haul-max**  
walking beam susp.

#18 R118638 2006, D46-170HP  
rears, 252" WB, 475hp **\$55,000**

#38 R892655 2002, DSP-463P  
rears, 252"WB, 475hp **\$55,000**

#69 R148686 2006 D46-170HP  
rears, 252" WB, 475hp **\$55,000**

#79 R179275 2007 D46-170HP  
rears, 252" WB, 475hp **\$55,000**

#87 F064742 2004, DSP-463P  
rears, 252"WB, 475hp **\$55,000**

#93 R087300 2005, D46-170HP  
rears, 252" WB, 475hp **\$55,000**

#114 R892657 2002, DSP-463P  
rears, 252"WB, 475hp **\$55,000**

**CLEAN AND IN EXCELLENT SHAPE!**  
Maintenance Records - Regular Oil Samples  
For More Info: [www.irelandtrucking.com](http://www.irelandtrucking.com)

Thomas H.  
**IRELAND**  
INCORPORATED

Call Charles Ireland  
**541-863-1501**  
Myrtle Creek, OR



# TRIAD MACHINERY

Portland	Eugene	Prineville	Seattle	Spokane	Mt. Vernon
800.221.8512	800.342.6780	888.662.2940	800.622.8876	800.945.9168	360.488.3948

# MOVE WOOD

# LOG-CHAMP YARDER





## MAKING OUR CUSTOMERS MORE COMPETITIVE





As We See It....

# This is how Loggers Win in the Policy Arena

By Nick Smith

The American Loggers Council is "loggers working for loggers." That's more than just a motto to promote our organization as the national voice for professional timber harvesters. It's a mission statement and a guiding principle, expressing our belief that if loggers don't get involved to protect our industry, nobody else will. And when loggers are working to help fellow loggers, we see real results in the policy arena.

An excellent example is the recent effort in New Hampshire to override a governor's veto in order to protect biomass facilities in the Granite State.

Loggers understand biomass facilities provide a key market for low-grade wood products. They are an important part of our industry's infrastructure that allows us to compete in a global economy. Biomass is good for rural economies and provides a renewable alternative to fossil fuels. But some don't understand the benefits, especially in light of slumping prices for other forms of energy.

Republican Gov. Chris Sununu raised alarms when he vetoed legislation to require utilities to purchase a portion of their electricity from the state's wood-burning power plants. Gov. Sununu blocked the bill under the guise of protecting electricity ratepayers. It's no coincidence his position was fully supported by anti-logging special interests in Concord.

There were serious consequences to Gov. Sununu's veto. Without a stable biomass sector, many forestry and logging businesses were preparing to close their businesses and lay off workers. Many in New Hampshire found this potential outcome unacceptable, so they rallied to form a campaign

to convince the state legislature to override the veto.

In addition to personally lobbying their legislators, loggers attended town halls and organized rallies outside the state capitol. Many sent letters to editors of their hometown newspapers. The New Hampshire Forest Industry and Forest Landowners orchestrated a Biomass Override Petition drive that was very effective, got citizens involved and impressed the legislators.

These efforts paid off to protect New Hampshire's logging industry. The House rallied just enough votes to meet the two-thirds threshold needed to override the veto on a 226-113 vote. The override easily passed the Senate, 21-3. The organizers of this effort deserve applause from loggers across America. It should inspire us all to get involved and see what we can do to protect our industry in our communities, our states, and our nation.

Our industry is under constant threat from anti-logging politicians and their special interest supporters. We can't afford to sit on the sidelines as bad policies threaten our businesses. ALC recognizes that many of us are too busy working in the woods, meeting payrolls and raising families to engage in public policy debates. That's why we constantly strive to make it easier for loggers to get engaged and make their voices heard.

It's why we organize the ALC annual Fly-In to make it easier to visit the nation's capital, and why we have retained Steve Southerland to represent us when we're not in Washington DC. It's why we partner with the Federal Forest Resource Coalition and work with Healthy Forests, Healthy Communities to alert you to developments in federal forest management.

ALC understands that time is one of your most important resources. We only ask that you invest some of your time, even if it's very little, to get informed and engaged in the policy issues that affect you. When "loggers are working for loggers" everyone wins.



*The American Loggers Council is a 501 (c)(6) not for profit trade organization representing professional timber harvesters in 32 states across the United States. If you would like to learn more about the ALC, please visit their web site at [www.amloggers.com](http://www.amloggers.com), or contact their office at 409-625-0206.*

*Nick Smith is Communications Specialist for American Loggers Council and founder of Healthy Forests, Healthy Communities, a non-profit, non-partisan organization that advocates for active forest management on federal forest lands.*

## YOUR MONEY SHOULDN'T RETIRE WHEN YOU DO

When you deposit your savings in the Washington Contract Loggers Association Credit Union, you get a good interest rate and your deposits enable other loggers to finance needed equipment purchases. Your money stays in the Timber Industry instead of going to Wall Street.

**New Member Promo:**

**2.50% APY\* for 11 months**

**Existing Member Promo:**

**2.75% APY\* for 15 months**

APY is Annual Percentage Rate, Requires \$500 minimum deposit, Accounts must be opened before 11/30/2018. Deposits insured by NCUA.



**Keep your money working in the timber industry!**  
Call today to find out more about WCLA Credit Union.

**360-352-5033**

[www.loggers.com/cu](http://www.loggers.com/cu)





Summary Judgment....

# "Horsefeathers," Ruled the Judge

by William Perry Pendley

The long bureaucratic nightmare for a Louisiana man who purchased an oil and gas lease in the Reagan administration's early days but was denied the right to drill ended last week in federal district court in Washington, D.C. In the lawsuit by Sidney Longwell of Baton Rouge for his tiny company Solenex, LLC, Senior Judge Richard J. Leon ruled the federal government illegally cancelled his lease and voided his application for permit to drill (APD); he ordered both reinstated. As to its claim that it may cancel contracts with private citizens at any time, Judge Leon wrote, "Horsefeathers!" It is up to the Trump administration if it wants to continue to defend the indefensible and perhaps more importantly, if it wants to subject the hundreds of energy leases it issued to Obama-style revocation after President Trump leaves office.

In 1982, the Bureau of Land Management issued Mr. Longwell a 6,247-acre oil and gas lease in the Badger-Two Medicine Area of the

Lewis and Clark National Forest—south of Glacier National Park, the Great Northern Railroad, and U.S. Highway 2, east of private lands, and southwest of the Blackfeet Reservation in Glacier County in northwestern Montana. In 1983, an APD was submitted for a well to evaluate the potential of that part of the Overthrust Belt, whose unique geology may yield "100 trillion cubic feet of natural gas." After four National Environmental Policy Act and National Historic Preservation Act reviews, which found no "cultural resources" or "religious site or activities," the APD was approved in 1985, 1987, 1991, and finally in 1993—subject to onerous mitigation measures. New reviews are required if producible quantities of energy are found by drilling.

Nonetheless, the Clinton administration tried to kill the lease. In 1993, 1994, 1995, 1996, and 1997, Secretary Babbitt suspended lease activity for various ostensible reasons; then, in 1998, he made it indefinite. In 1983, the nearby Blackfeet tribe supported leasing, but over

the years changed its position, issued drilling rights on its reservation, and asserted the area is sacred. A federal official said, however, a \$5 million payment to the tribe would remove its objections. In 2013, Mr. Longwell sued to end the decades-long suspension. In 2015, hearing his pitiful plight, Judge Leon called it "Kafkaesque" and ordered a decision. In 2016, Secretary Sally Jewell cancelled the lease and voided the APD.

The revocation is unprecedented! Never in the history of the Mineral Leasing Act—by which Congress authorized Secretaries to issue and oversee oil and gas leases—has one been cancelled unilaterally. At 2017's prestigious Rocky Mountain Mineral Law Institute, a scholar warned, given the Solenex cancellation, "the rights guaranteed under a federal oil and gas lease are not as certain as they once seemed and are often not what lessees bargained for." The Chamber of Commerce of the United States of America argued that the "unilateral and arbitrary cancellation of [the lease], more than 30 years after its issuance, violates well-established principles of contract law and property rights [creating] considerable uncertainty surrounding the en-

forceability of [all] government contracts."

Judge Leon did not need to reach the issue he predicted would take the case to the Supreme Court. Instead he relied on its "unique facts," that is cancellation of the "lease after 33 years without notice and based on a supposed pre-lease violation of [statutes that] had never been disclosed to Solenex...." Moreover, the Secretary cancelled "Solenex's 27-year old APD after twice approving it and similarly giving no indication that the underlying lease was invalid." These actions, ruled Judge Leon, are "arbitrary, capricious, an abuse of discretion, or not otherwise in accordance with law." After all, the "Government's fulfillment of its contractual duties—'governed generally by the law applicable to contracts between private individuals'—requires it to act in good faith. It did not do so here!"

Over to you, Mr. President. Your laudatory energy program hangs in the balance.

*Mr. Pendley, a Wyoming attorney, is President and Chief Legal Officer of Mountain States Legal Foundation and a regular columnist in Loggers World.*



Call (800) 422-0074 or join  
online at [www.loggers.com](http://www.loggers.com)

## Membership Highlights...

- Master Logger Program (exceeds SFI logger training requirements)
- Monthly Springboard Magazine
- First aid/cpr and pilot car training
- Log A Load For Kids® - giving campaign for Children's Hospitals
- WCLA Insurance Agency - top coverage for the timber industry
- Employee benefits programs through WCLA's benefits partner: Kibble & Prentice
- WCLA Claims Management Program - providing the benefit of savings on L & I premium costs, improved safety standards and reduced claims costs

## I BUY LOG SKIDDERS



- Dozers
- Loaders
- Excavators

**1-503-545-0007**



# THE CONCERT AT CAMP 18



*At Camp 18 in Elsie Oregon, on September 22, 2018 a historic event took place...*

It was the first live music concert at Camp 18 and it was also the first ever Craig & Terry Music/Loggers World event. One hundred forty people turned out for this special event and a good time was had by all.

The staff at Camp 18 treated us very well and you couldn't ask for a better environment to enjoy Craig & Terry's unique logging music. With a cozy fire going in the fireplace, the concert started promptly at 7:00 pm and went for 2 hours worth of music and laughter. One of the highlights of the concert was the first public performance of the new Loggers World song, as well as several of the songs the band is recording for their new album. They hope to get their new album completed by the end of 2019.

Many of you are acquainted with the songs but if you weren't there you missed the entertaining stories between the songs, as told by Craig Jenkins. I think a little bit of Finley Hays' story telling abilities may have rubbed off on Craig when Finley interviewed him 30 years ago for an article in Loggers World.

We are already talking about the next concert and specifically where it should be located. Camp 18's hall was sold out for this first concert so we need to plan for some growth in attendance for the next one. We will make an announcement when the exact date and location are scheduled.

## A Great Gift for that Hard-to-Buy-For Person

### Songs from the Siuslaw **\$20.00**

Double Album

Plus \$5.50 Shipping



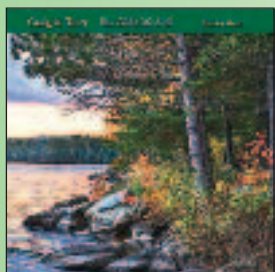
"Songs from the Siuslaw" (pronounced SY-u-slaw) is a heartfelt tribute to the hard working men & women in the logging industry and dedicated to the many men who have lost their lives doing one of the most dangerous and unappreciated jobs in the world. This a double CD set that was recorded live in Florence, Oregon in 1999 at the Florence Events Center. The first CD is saw-shaped and will play in top-loading and tray loading CD players ONLY. It comes with a 20-page booklet filled with humorous lyrics and old logging photos.



### The Snag Fallers Ball **\$15.00**

Plus \$5.50 Shipping

"The Snag Fallers Ball" - A light hearted collection of original songs about logging in Oregon and Alaska, and was first released in 1988. Craig wrote nine of the eleven songs on the album and co-authored two others with Don Beck, a long time friend, logger and musician also from the small town of Mapleton, Oregon.



### You Hold Me Still **\$15.00**

Plus \$5.50 Shipping

"You Hold Me Still" - In 1992 after many requests to record a gospel album they again returned to the studio and recorded eleven original songs. Two of the songs are co-written - one with Don Beck and one with Rick Barrows.

Order on their website for fastest service:

**www.ctmusicoregon.com**

Or if you prefer not to order on-line you can call them at: **541-268-6910**



### Endangered Species **\$15.00**

Plus \$5.50 Shipping

"Endangered Species" - In 1989 Craig & Terry went back into the studio to record their next album. Craig wanted to share his point of view through music which addressed some of the political issues facing the logging industry at that time.



### Special Deal!

### ALL 3 CD'S **\$40.00**

Snag Fallers Ball, Endangered Species & You Hold Me Still

Plus \$5.50 Shipping



### SUPER Special Deal!

### ALL 5 CD'S **\$60.00**

Snag Fallers Ball, Endangered Species & You Hold Me Still

Plus \$6.50 Shipping

PLUS

Songs from the Siuslaw (double album)



Please send me the items I have checked!

Send your check or Money order to:

**CT MUSIC OREGON**  
86399 SWEET CREEK RD,  
MAPLETON, OREGON 97453

NAME: .....

ADDRESS: .....

CITY: ..... STATE: ..... ZIP: .....

PHONE: ( ..... ) .....

(ALLOW 3 WEEKS FOR DELIVERY)



# CONCERT AT CAMP 18



Above: A fire in the fireplace and rustic wood beam construction contributed to the pleasant concert environment.

Right: Gordon Smith, the man who had the vision to create Camp 18, was our special guest at the concert. A good time was had by all, including Mr. Smith!



## LOGGERS WORLD Suspenders are Back!!



Show the world that you support  
**LOGGERS WORLD MAGAZINE**  
by wearing *Loggers World Suspenders*

Loggers World Suspenders are now available in traditional red (2" wide) with black lettering. You can order them with leather ends or clips and we also have the buttons. Just use the handy form below.

**Only  
\$18.50**  
per pair

*A Great  
Christmas Present  
for Your Favorite Logger!*

(Washington Residents pay  
**\$20 including Sales Tax**)

Plus \$7.50 shipping & handling



Name \_\_\_\_\_ Phone \_\_\_\_\_

Mailing Address \_\_\_\_\_ City \_\_\_\_\_ State \_\_\_\_\_ Zip \_\_\_\_\_

# \_\_\_ 46" Leather      # \_\_\_ 46" Clip      # \_\_\_ @ \$18.50 = \$ \_\_\_\_\_

# \_\_\_ 50" Leather      # \_\_\_ 50" Clip      WA Sales Tax # \_\_\_ @ \$1.50 = \$ \_\_\_\_\_

# \_\_\_ 54" Leather      # \_\_\_ 54" Clip      S & H @ \$7.50 (\$13.00/ 2 or more pr.) = \$ \_\_\_\_\_

Bucksaw Buttons - \$3.00 per package of 8      \_\_\_\_\_ Buttons @ \$3.00 = \$ \_\_\_\_\_

**Total \$ \_\_\_\_\_**

**Send your check  
or Money order to:**

**LOGGERS WORLD LLC**

P. O. Box 1631

CHEHALIS, WA 98532

Credit card sales call:  
**800-462-8283**

**Offer expires  
January 31, 2019**



(Continued from Page 7)

day Schools and one of them in Possum Trot. This graduated into a full time school which grew into a high school and from there into a college. She built and got help and always held out hope for young people who were willing to work but couldn't afford the normal college education. Even today 90% of the students at Berry College work their way thru school doing 'on campus' jobs. They raise beef, take care of

the grounds, man the laundry, help in the kitchens, run the dairy farm, raise and harvest crops.

They produce and they build and they get educated. These students and this college is living and vital proof that theory and hard work make a great team. Book learning and the work experience go hand in hand to build an extremely good and valuable learning process.

Remember that name, 'Berry College', and when someone is

considering attending college they could do worse than investigate the opportunities offered at Berry College, Rome, Georgia.

They started with Sunday School and have held onto that

Christian theme. Although it isn't precisely a Christian College they do have three Chapels on Campus.



### TEREX DOZER PARTS

New 9" pitch drive sprockets.....	\$3,400 pair	Front blade hyd. cylinders.....	\$1,500
New 8" pitch drive sprockets.....	\$3,200 pair	Track tightener cyl .....	\$400-\$600
Pair used 9" pitch tracks and pads		New rebuilt Detroit inline 6-71 engine ...	\$9,000
for Terex or Cat, 1.5 inch grousers....	\$2,500	Good running Terex dozers	
Bottom Terex rollers.....	\$400 - \$700 new	with blade and drum.....	\$1,500 & up

503-623-2089

**TRIPLE T EQUIPMENT**  
Rickreall, OR 97371

clp\_inc@msn.com

# IRONMART

**TOLL FREE: 1-800-462-8283**

**RATES:** Space available at \$25.00 per column inch. Each ad is separately boxed for prominent display of your machinery or message.



**DEADLINES:** by mail, 5th of month prior to publication.  
Phone your order toll free 8:30-5:00 p.m. Monday-Friday Pacific Time.  
Use your VISA or MasterCard



## LOGGING FINANCE.COM

OUR NAME SAYS IT ALL!

- ☐ Low Rates
- ☐ Fast Approvals
- ☐ Easy Credit Application

Financing Provided By  
**AMERICAN LEASING &  
FINANCIAL**

**800-644-1182**

### TIMBCO USED PARTS

445 Finals & Motors  
Cat 330 & Lohmann GFT80  
Stick, Tool & Leveler Cyls  
Tested Rad, Poclain Swing  
**ALL ITEMS INSPECTED**  
Call Kevin 877-563-8899 or  
250-565-5222

khodgins@prolenc.com

**WANTED: Bull or High Lead  
Logging Block, 18" sheave or  
larger also want to buy old axes,  
axe heads, spring boards, crosscut  
saws and handles Bob 360-687-  
1883 or 360-608-2583**

### Timber Harvesting Professionals Wanted on Afognak Island, Alaska

Excellent wages paid for qualified processor, shovel, road building operators and truck drivers and yarder crew. Also hiring entry and journey level mechanics for shop and field work. New management and new attitudes as well as machinery updates and camp improvements.

Expect 6 days/week work schedule.  
Must provide  
resume/references and  
minimum 5 years experience.  
Drug Tested Workplace.

Call **EVERGREEN TIMBER**  
**907-680-2304**

See website:  
evergreentimberlp.com

40' to 89' (No 70' available)  
flat car and box car  
bottoms available for  
bridges, best prices. 360-426-  
8386 fehorse@basicisp.net

## Deadline for the next issue of Loggers World Magazine is November 7, 2018

### EQUIPMENT FINANCING

- New & Used - No age restriction
- No Financial Statements Needed
- Approvals in 24 hours
- Logging Industry Specialist  
[www.cfscapital.com/forestry](http://www.cfscapital.com/forestry)  
**800-503-4919**

**89 Link-Belt Log Master  
3400C For Sale: Good Motor,  
boom, and drive. Broke the  
frame when rotec bearing  
failed. Make Offer**

425.343.2754 ext. 101

**ENGINES WANTED  
WILL PAY CASH & PICKUP**  
DETROIT engines 60 series,  
12.7 liter DDEC III's & IV's.  
CUMMINS Big  
Cam 444, NT88, N14.  
CUMMINS ISX non-runners.  
Call or text 501-772-6005

### PARTING OUT 2 BURNED MACHINES:

1. Kobelco SK250LC, LL08 series, w/Jewell boom
  2. Timbco 445B w/Waratah processing head.
- Call for details and pricing  
509-949-3772

### 100% FINANCING

New & Used Equipment  
Great Rates  
Seasonal Payments Available  
Start-Ups Welcome  
**Threshold Financial**  
[www.thresholdfinancial.net](http://www.thresholdfinancial.net)  
**888-280-9900**

**Papac Alaska Logging is  
looking for an  
Experienced Log Shovel  
Operator. 907-965-4222**

**Time to Quit - Sell or  
Trade.** Heavy Equipment  
parts: Allis Chalmers, Terex,  
Cat, Link-Belt, John Deere,  
Detroit. Old logging rigging  
and tools, blocks, shackles,  
saws, etc. 503-879-5440 or  
deck@partsunknownusa.com

### RETIRING

**TMY-45 Yarder w/T-Bird  
carriage, low hour Tooters &  
w/rigging \$80,000 ~~\$90,000~~  
Will take some trade**

**Cat 955L, new motor, a good  
Cat \$22,000**

**FMC: 4 final drives, 2 Clark  
winches, 3 rolls of track and  
some other stuff**

**Older KETO 500  
Processing Head \$5,000**

**360-795-8058**

NCQ-RR

## THEY ARE BACK! LOGGERS WORLD SUSPENDERS

### TRADITIONAL RED

with black letters

Clips or leather ends  
available in size 46-50-54,

**\$18.50**  
Pair  
(U.S. Funds)

Plus \$7.50 Shipping (Inside USA)

WA Residents pay \$20

including sales Tax

## LOGGERS WORLD

P. O. Box 1631,  
Chehalis, WA 98532



# CROWLEY EQUIPMENT, INC.

**(541) 688-5924 FAX: (541) 688-0704**

**MIKE (541) 954-7643 • ERIC (541) 206-2252 • DAN (541) 914-9222**

4655 Cloudburst Way, Eugene, Oregon 97402



**2013 Link-belt 240X2  
Log Loader**  
W/9,000 Hours,  
**P.O.R.**



**2016 Deere 909MH**  
w/Southstar Felling Head,  
3,400 hours  
**P.O.R.**



**1996 Diamond D210**  
**\$250,000**



**2013 Linkbelt 290X2  
Log Loader**  
with 10,320 hours  
**P.O.R.**



**2016 Tigercat LX830D,**  
3,800 Hrs.  
**P.O.R.**

## LOG LOADERS

- 2015 CAT 320D
- (2) 2012 CAT 320D'S
- 2010 CAT 330D W/2 PULL-MASTER DRUMS
- 2013 HITACHI ZX240
- 2017 DEERE 2156 LL W/JEWELL BRUSH GRAP- PLES
- 2016 JOHN DEERE 3756
- 2016 DEERE 2954D
- 2016 JOHN DEERE 2154D
- 2015 JOHN DEERE 2454D
- 2008 JOHN DEERE 2054
- 2007 DEERE 3554
- 2004 DEERE 3554
- 1993 JOHN DEERE 690E
- 2011 KOBELCO SK295
- 2006 KOBELCO SK210
- 2016 KOMATSU PC240
- 2013 LINKBELT 240X2
- 2013 LINKBELT 290X2
- 2012 LINKBELT 350X2 W/2 PULLMASTER DRUMS & TONG THROWER
- 2011 LINKBELT 290X2
- 2005 LINKBELT 240LX W/JEWELL TONG THROWER
- 1997 LINKBELT 4300Q W/(2) PULLMASTER DRUMS
- 2002 MADILL 3800C W/2 PULLMASTER DRUMS
- 2000 THUNDERBIRD 1238
- 2015 TIGERCAT LS855C

## PROCESSORS & DELIMBERS

- 2015 CAT 325D W/SOUTH- STAR QS600
- 2013 CAT 324D W/DM4550
- 2012 HITACHI ZX240 RB W/WARATAH 623C
- 2008 HITACHI ZX350 W/WARATAH 624
- 2017 JOHN DEERE 803 W/WARATAH 622C

## PROCESSORS & DELIMBERS *Cont.*

- 2016 DEERE 2954DW/SOUTHSTAR QS605
- 2007 JOHN DEERE 2554 W/PIERCE 3348
- 2006 JOHN DEERE 2554 W/DM4550
- 2003 DEERE 370 W/WARATAH 626
- 1990 JOHN DEERE 290 W/FABTEK
- 2008 KOBELCO SK350RB W/624 WARATAH
- 2005 KOBELCO SK250LC RB W/WARATAH 622B
- 2017 LINKBELT 4040 W/SOUTHSTAR 600
- 2016 LINKBELT 4040 W/SOUTHSTAR 600
- 2014 LINKBELT 290X2 W/WARATAH 623C
- 2012 LINKBELT 350X2 RB W/624C
- 2004 LINKBELT 240LX W/PIERCE 3348
- 2003 LINKBELT 240LX W/DM4400
- 1997 LINKBELT 3400Q WDM3500
- 2006 MADILL 2850C W/WARATAH 624

## FELLER BUNCHERS

- 2016 CAT 552
- 2016 DEERE 909MH W/SOUTHSTAR FELLING HEAD
- 2015 JOHN DEERE 959K
- 2015 JOHN DEERE 643L
- 2016 TIGERCAT LX830D
- 2005 TIGERCAT L870
- 2005 TIGERCAT LX830

## SKIDDERS / DOZERS

- 2017 CAT 545D
- 2007 CAT 535C
- 2001 CAT 535B
- 1999 CAT 525 W/SWING BOOM

## SKIDDERS / DOZERS *Cont.*

- CAT 977L
- 2010 JOHN DEERE 848H
- 1988 J D 550G W/RIPPERS

## CHIPPERS / GRINDERS

- MORBARK 30RXL
- YARDERS
- CHRISTY HD YARDER
- DIAMOND D210
- (2) KOLLER K602'S
- (2) MADILL 071
- MADILL 70'
- (2) SKAGIT 739
- SKAGIT 737
- (2) THUNDERBIRD 6140
- THUNDERBIRD TMY50
- THUNDERBIRD TSY-6240
- THUNDERBIRD TSY255
- THUNDERBIRD TY90
- THUNDERBIRD TY-40
- 1995 THUNDERBIRD TTY70

## EXCAVATORS

- 2010 CAT 330D W/2017 TRACTIONLINE
- 2006 CAT 320C RB
- 2005 CAT 312CL
- 2002 CAT 330B RB W/2017 TRACTIONLINE
- 2012 HITACHI 290
- 1996 HITACHI EX270
- 2014 JOHN DEERE 2454D RB
- 2006 LINKBELT 370LX RB

## MISCELLANEOUS

- 2012 CAT 924K
- 2010 CAT 330D W/TRAC- TIOLINE WINCH ASSIST
- 2007 CAT 140H
- CAT 977L
- 2006 KOMATSU WA450 -L5
- MEDFORD LOG FORKS

## PARTING OUT

- 2005 HITACHI ZX250 LL
- LINKBELT 210LX BOOM
- THUNDERBIRD TSY-155



**2016 John Deere 2154D,**  
3,300 Hours  
**\$200,000**



**2016 Deere 2954D Log Loader**  
w/4,233 hours  
**P.O.R.**



**2016 Ponsse Buffalo**  
4,000 hours  
**P.O.R.**



**2016 Komatsu PC240**  
4,700 hours  
**P.O.R.**

[www.crowleyequipment.com](http://www.crowleyequipment.com)



**2010 Cat 330D**  
W/2 Pullmaster Drums, 14,000 Hrs  
**P.O.R.**



**2002 Madill 3800C**  
W/2 Pullmaster Drums  
**P.O.R.**



**2012 Link-belt 350X2**  
W/2 Pullmaster Drums & Tong  
Thrower, 9,000 hours  
**P.O.R.**



**(2) 2012 Cat 320D Log Loaders**  
**P.O.R.**



# SHOW AND SELL

Send your Black and White or Color photo and a description of what you are selling (try to keep it within 20 words - 1 item per ad - *No Business Names Allowed*) and we'll publish it in Show & Sell for just \$125.00. Mail (or email to [logworld@aol.com](mailto:logworld@aol.com)) your information to Loggers World LLC, P.O. Box 1631, Chehalis, WA 98532. Deadline is 5th of the month preceeding publication.

6140 Thunderbird  
Swing Yarder,  
all lines & rigging,  
whistles, new gear  
and bearings 18 mos  
ago, Super Eaglet  
Carriage ~~\$332,000~~  
New Years  
Special  
\$312,000  
(360) 470-1535



x

**ADVERTISE**  
YOUR ITEM IN THIS SPACE  
**\$125<sup>00</sup>**  
**CALL 1-800-462-8283**  
**SPECIAL DEAL:**  
*Get your ad for*  
**\$110<sup>00</sup>** *if you buy it*  
*on our website:*  
**www.loggersworld.com**



2 Inch Hot Saw Teeth \$14. Can Ship up to 60 in a box for \$15. Call Jim 603-915-0623

Q



2017 Doosan DX300 log loader with Jewell  
63 inch grapples, 3,000hrs \$250,000  
call Shane 530-945-1586

R

Quadco  
22B40 S/N  
1014  
Like New,  
500 hours of  
use. RARE  
low mount  
wrist.  
44K OBO  
Call Kevin  
250-565-5222



Q



Waratah HTH 20 with top saw, large feed  
wheels, 3/4" butt saw, approx 4,000 hrs, lots of  
new parts, complete with computer controls &  
computer \$14,000 OBO 541-659-4303 leave a  
clear message or I can't call you back.

Q



2005 Timberjack 460D skidder, 9,300hrs,  
dual arch winch, cab and air \$55,000  
call Shane 530-945-1586

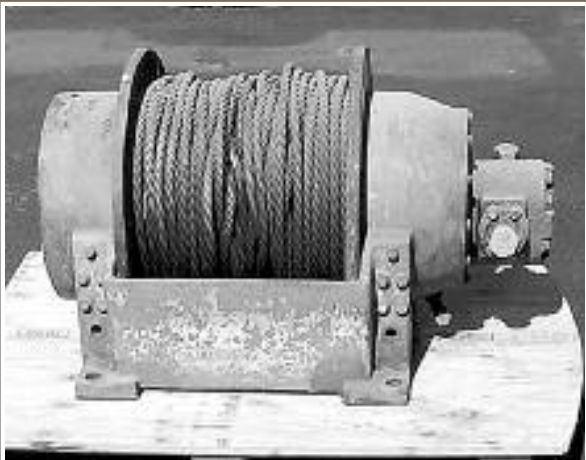
Q

**ADVERTISE**  
YOUR ITEM IN THIS SPACE  
**\$125<sup>00</sup>**  
**CALL 1-800-462-8283**  
**SPECIAL DEAL:**  
*Get your ad for*  
**\$110<sup>00</sup>** *if you buy it*  
*on our website:*  
**www.loggersworld.com**



2017 John Deere 3754D, 2017 -HTH / 625C  
Waratah processor, 2,350 hrs on unit and head  
\$625,000 call Shane 530-945-1586

Q



Pullmaster H25, H-25-3-86-3 \$7,000  
call Shane 530-945-1586

Q

**ADVERTISE**  
YOUR ITEM IN THIS SPACE  
**\$125<sup>00</sup>**  
**CALL 1-800-462-8283**  
**SPECIAL DEAL:**  
*Get your ad for*  
**\$110<sup>00</sup>** *if you buy it*  
*on our website:*  
**www.loggersworld.com**



2008 648H John Deere skidder, dual arch  
and winch, cab and air, 12,400 hrs \$58,000  
call Shane 530-945-1586

Q



# COMING EVENTS

## DECEMBER

7



### FOREST PRACTICES UPDATE SEMINAR

6PM TO 9PM

BEST WESTERN BOULDER FALLS INN

LEBANON, OREGON

FOR INFORMATION CALL: (503) 364-1330

8



### AOL STATE WIDE SAFETY CONFERENCE

BEST WESTERN BOULDER FALLS INN

LEBANON, OREGON

FOR INFORMATION CALL: (503) 364-1330

## JANUARY 2019

19



### WASHINGTON LOGGING SAFETY CONFERENCE

GREAT WOLF LODGE

GRAND MOUND, WASHINGTON

FOR INFORMATION: www.loggers.com

15-17



### ANNUAL MEETING ASSOCIATED CALIFORNIA LOGGERS

ATLANTIS CASINO RESORT SPA

RENO, NEVADA

FOR INFORMATION CALL: (916) 441-7940

**SEND EVENT NOTICES TO:** Publisher, Loggers World Magazine, P. O. Box 1631, Chehalis, WA 98532-8425. Please include your event's symbol. Items used at discretion of the publisher.

**Deadline for December 2018 issue: NOVEMBER 7th**

# Advertiser's Index

ACME	LOCK & LUBE.....11
MANUFACTURING .....13	LOGGERS WORLD
APPELO ARCHIVE	IRONMART .....26
CENTER.....12	LOGGERS WORLD
CASCADE TRADER .....5	SUBSCRIPTION .....29
CASHMAN EQUIPMENT .....3	MADSEN'S SHOP &
CATERPILLAR .....3	SUPPLY, INC.....6
CC HEAVY EQUIPMENT	MPI EQUIPMENT .....9, 15
INC. ....7	N. C. MACHINERY Co .....3
CHEAP CHAINSAW	NORTH AMERICA
PARTS .....20	SUPPLY .....12
CONSTRUCTION	OLIVER HAMMER CLOTHES
EQUIPMENT Co. ....19	SHOP.....7
COWLITZ RIVER RIGGING14	PACIFIC FIBRE PRODUCTS,
CROWLEY EQUIPMENT	INC. ....7
INC . ....27	PERSONS ENTERPRISES ..23
CT MUSIC.....24	PETERSON .....3
CUSTOM SERVICES	PROLENC HEAVY DUTY
COMPANY .....12	SWING BRAKE .....16
DUKE'S EQUIPMENT .....18	ROTHENBUHLER
EAGLE CARRIAGE &	ENGINEERING.....20
MACHINE INC.....14	SCHAEFER ENTERPRISES 20
FEENAUGHTY MACHINERY	SHOW & SELL.....28
Co .....11	TRIAD MACHINERY.....21
FRALEY TRACTOR, INC ...8	TRIPLE T EQUIPMENT ...26
FULL CIRCLE FINANCE....6	WARATAH FORESTRY
GEM.....15	ATTACHMENTS.....2
HIGH CASCADES	WASHINGTON CONTRACT
AGENCY .....18	LOGGERS ASSOC.....23
HOLT OF CALIFORNIA.....3	WCLA CREDIT UNION...21
IRELAND, INC.....21	WESTERN STATES .....3
L&L EQUIPMENT.....10	ZENDER EQUIPMENT .....17

## SUBSCRIPTIONS

Make Excellent *Christmas* Presents!

Send your check or Money order to:

LOGGERS WORLD LLC  
P. O. Box 1631  
CHEHALIS, WA 98532



Offer Expires  
December 31, 2018

- ☐ \$25.00 for 1-Year Subscription    ☐ \$50.00 for 2-Year Subscription  
☐ \$100.00 for 4-Year Subscription

WASHINGTON RESIDENTS PAY \$27.40, \$54.80 OR \$109.60 w/SALES TAX

NAME:.....

ADDRESS:.....

CITY:..... STATE:..... ZIP:.....

PHONE: (       ).....

(ALLOW 5 WEEKS FOR DELIVERY OF FIRST ISSUE)

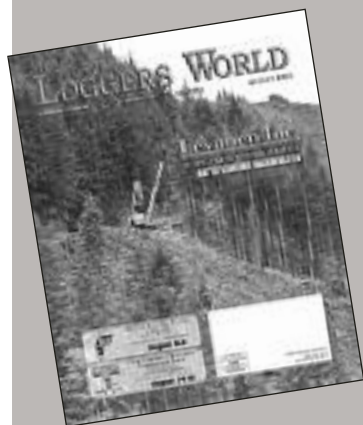
# SUBSCRIBE TODAY! LOGGERS WORLD

"The Logger's Magazine," is  
concerned with what  
concerns loggers

12 Issues – 1 Year Subscription

# \$25<sup>00</sup>

WA Residents pay \$27.40 w/tax  
Inside U.S.A.



*They're Santa Approved!*